



VISION^{RV}

VISIONRV.COM.AU



CHOOSE YOUR JOURNEY

This is an interactive brochure. Depending on how you open it, look for the mouse icon to visit links!



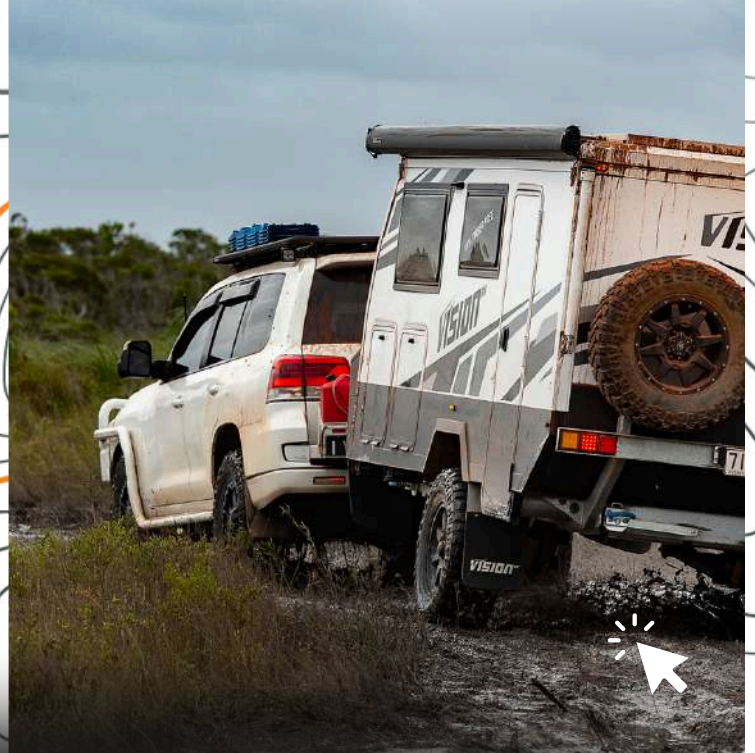
ELYSIUM - 19'6" - 21'6"

OFF ROAD /// LARGER // FULL LUXURY



NIRVANA - 14' - 16'

OFF ROAD /// NARROWER // FULL LUXURY



WHY BUY A **VISION** RV



LUXURY A GIVEN

Timber free, our vans boast a huge range of features designed for comfort on the go. From our generous exterior kitchen, double hot and cold external showers, air con, washing machines, soft touch open & close storage along with endless power, a Vision RV lacks nothing in creature comfort.



FULL OFF ROAD CAPABILITY

Zero compromise for our off-road credentials. From hot dipped chassis, push button air bag suspension and modern joinery that outperforms the competition, if you are planning on going off-grid, do it in a Vision RV for total peace of mind.



ENGINEERED FOR SIMPLICITY

Our products are testament to our commitment to detail, functionality, design excellence and pioneering innovation. Simple solutions such as wiring that can be reached, showers both sides of the van and other clever features make living in a Vision RV simple & relaxing.

NIRVANA 14' - 16' FLOOR PLANS



NIRVANA 14' POPTOP

ATM: 2900kg* OVERALL LENGTH: 6.59m*
TARE: 2150kg* APPROX TRAVEL HEIGHT: 2.6m*
TRACK WIDTH: 1.78m*



NIRVANA 16'A POP/HARDTOP

ATM: 3500kg* OVERALL LENGTH: 7.52m*
TARE: 2500kg* HEIGHT: 2.6m* POP/3.12m HARD
TRACK WIDTH: 1.78m



NIRVANA 16'B POP/HARDTOP

ATM: 3500kg* OVERALL LENGTH: 7.52m*
TARE: 2500kg* HEIGHT: 2.6m* POP/3.12m HARD
TRACK WIDTH: 1.78m



NIRVANA 16'C POP/HARDTOP

ATM: 3500kg* OVERALL LENGTH: 7.52m*
TARE 2500kg* HEIGHT: 2.6m* POP/3.12m HARD
TRACK WIDTH: 1.78m



16' FAMILY POP/HARDTOP

ATM: 3500kg* OVERALL LENGTH: 7.52m*
TARE: 2500kg* HEIGHT: 2.6m* POP/ 3.12m HARD
TRACK WIDTH: 1.78m



2 OR 3 BUNKS

*Intended as a guide only - exact figures available on request

ELECTRICAL

N I R V A N A

- 460Ah lithium battery, 3000W/100A Enerdrive Inverter / Charger
- 990w Solar (3x330w Panels)
- 800w Solar (4x200w panels)
- Enerdrive 40amp DC-DC battery charger with MPPT
- Single Enerdrive 40A MPPT Solar Controller
- Enerdrive ePro PLUS battery monitor
- White/amber external lights, both sides and rear
- Front external LED spotlight on swivel mount

APPLIANCES

- Huge external kitchen, 3 burner cooker, sink with hot and cold tap, shelves, pantry nooks, slide out pantry draws, 12V cig, USB's and double 240v
- Vitrifrigo 110 litre upright compressor fridge / Ice Box
- Vitrifrigo 150 litre upright compressor fridge / Freezer (16B only)
- Reverse cycle air conditioner
- Gusto Dust Reduction System
- Induction cooktop
- Reversing camera - optional dual lens, single lens as standard
- Fiamma / Cassette awning
- 12V fans for each occupant (2x Couples layout up to 5x for Triple Bunk)
- Bedside charging points USB 240V with LED reading lights
- Individual touch LED strips throughout van
- Front load washing machine
- 24 inch TV with roof top antenna
- TRUMA Gas heater controlled by Vario Digital Climate Control Panel

PLUMBING

- 3 x 90 litre fresh water tanks (270 litres total)
- Water tank manifold allowing all tanks to be filled and drained independently
- Dual external hot / cold showers, either side of tool box
- Grey tank divided into 75 litre grey water tank plus 14 litre urine tank separately plumbed
- TRUMA instant gas hot water system w/ VARIO Digital Control Panel
- TRUMA instant gas hot water system controlled by VARIO Digital Control Panel
- Internal shower with channel drain
- Vision RV's simple compost toilet with urine tank plumbed to separate grey tank partition and external outlet

NIRVANA	
POP	HARD
✓	✓
✓	—
—	✓
✓	✓
✓	✓
✓	✓
✓	✓
✓	✓
NIRVANA	
POP	HARD
✓	✓
✓	✓
✓	✓
□	✓
□	□
□	□
✓	✓
✓	✓
✓	✓
✓	✓
✓	✓
□	□
□	□
□	□
NIRVANA	
POP	HARD
✓	✓
✓	✓
✓	✓
✓	✓
✓	✓
✓	✓
✓	✓
✓	✓



CHASSIS

N I R V A N A

- Hot dipped galvanised chassis - 150mm x 50mm
- Single axle 2900kg ATM with Cruisemaster D035 coupling (up to 900kg payload subject to model and options fitted)
- Dual axle 3500kg ATM with Cruisemaster D035 coupling (up to 1000kg payload subject to model and options fitted)
- Heavy duty trailing arm independent airbag suspension, twin ARB shock absorbers per wheel
- Ventilated disc brakes, large parallel bearings
- Large off-road wheels and tyres (285/70/R17) + 35 offset allows for easy matching to tow vehicle. Five or six studs available with a 35" optional upgrade
- Spare wheel and tyre with upgrade available for second spare
- Heavy duty centre mounted jockey wheel
- Heavy duty rear recovery points on rear chassis rails
- Heavy duty rear bar - Chassis extension providing superior departure angle and unrivalled rear protection strength and to facilitate mounting of accessories

NIRVANA

POP HARD

✓	✓
✓	—
✓	✓
✓	✓
✓	✓
✓	✓
✓	✓
✓	✓
✓	✓

EXTERNAL FEATURES

- Super strong monocoque composite shell construction providing unrivalled strength, durability, insulation standards and repairability
- Aluminium entry door with security and fly screen
- Single piece honeycomb composite floor
- Air compressor with outlet for tyre inflation and cleaning
- Dual jerry can holders and twin 4kg gas bottles in front box
- Raptor coated front storage box with dual sliding shelves and firewood rack, pole carrier and tapered front to act as a stone shield
- Industry leading heavy duty aluminium extrusion joining all walls
- Entire van including all cabinetry is 100% timber free construction
- Electric roof raiser
- Wireless, remote airbags with variable load capability

NIRVANA

POP HARD

✓	✓
✓	✓
✓	✓
✓	✓
✓	✓
✓	✓
✓	✓
✓	✓
✓	—
✓	✓



INTERNAL

- Double glazed euro styled windows
- Aluminium cabinetry - laser cut, folded and powder coated
- Solid surface commercial grade acrylic bench
- Stylish automotive leather lounges
- Class leading storage
- Durable white pop top with several zippable windows to allow maximum ventilation
- Largest possible appature european windows and roof hatch
- Premium king size pillow-top mattress

NIRVANA

POP HARD

✓	✓
✓	✓
✓	✓
✓	✓
✓	✓
✓	—
—	✓
✓	✓



PEARL EFFECT

NIRVANA AND ELYSIUM DECALS

- Black Raptor Coated base protection strip around shell - installed post van assembly to ensure superior sealing
- High grade 3M Decals - holographic black camo and charcoal with colour changing pearl effect
- Optional WAABINY Indigenous artwork - dark or light versions - meaning 'playtime'
- Optional KIAH LEUMEAH Indigenous artwork - Dark - meaning 'Beautiful place, here I rest'

WAABINY



KIAH LEUMEAH



ELYSIUM 19'6 - 21'6 HARD TOP FLOOR PLANS



ELYSIUM 19'6



ATM: 3500kg*
OVERALL LENGTH: 8.7m*
APPROX TRAVEL HEIGHT: 3.12m*
TRACK WIDTH: 2.0m



ELYSIUM 19'6 FAMILY



2 OR 3 BUNKS

ATM: 3500kg*
OVERALL LENGTH: 8.7m*
APPROX TRAVEL HEIGHT: 3.12m*
TRACK WIDTH: 2.0m



ELYSIUM 21'6



ATM: 4500kg*
OVERALL LENGTH: 9.2m*
APPROX TRAVEL HEIGHT: 3.12m*
TRACK WIDTH: 2.0m

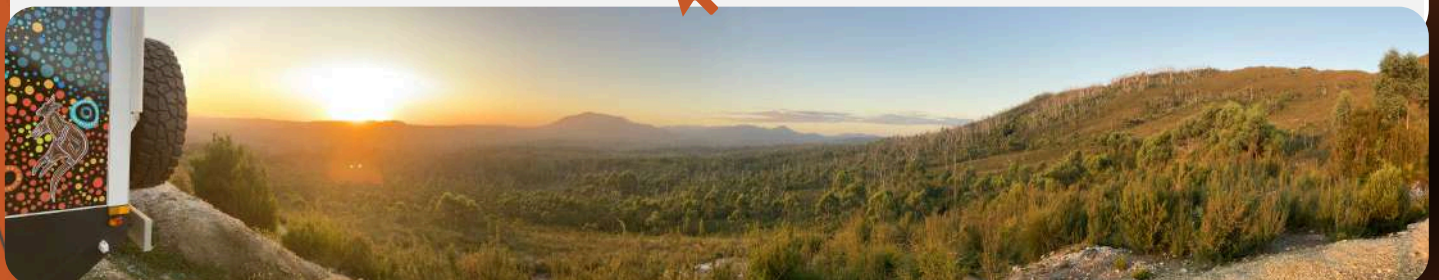


ELYSIUM 21'6 FAMILY



2 OR 3 BUNKS

ATM: 4500kg*
OVERALL LENGTH: 9.2m*
APPROX TRAVEL HEIGHT: 3.12m*
TRACK WIDTH: 2.0m



ELECTRICAL

ELYSIUM

- Garmin Connect 50 Digital Switching System via Dual Tablets, one fixed and one mobile usable from vehicle for air bags and dust reduction system
- Massive 460ah lithium battery
- 3000W/100A Enerdrive Inverter/Charger Unit
- 1000W solar
- 1200W solar
- Enerdrive 40amp DC-DC battery charger with MPPT
- Twin enerdrive 40A MMPT Solar Controllers (Solar array divided into two MPPT's)
- Enerdrive ePro PLUS battery monitor
- White/amber external dimmable lights, both sides and rear
- Front external LED spotlight on swivel mount
- Power Pack Upgrade - From 1000W to 1200W solar and add extra 460Ah lithium battery
- Power Pack Upgrade - From 1200W to 1400W solar and add extra 460Ah lithium battery

ELYSIUM	
19'6	21'6
✓	✓
✓	✓
✓	✓
✓	—
—	✓
✓	✓
✓	✓
✓	✓
✓	✓
✓	✓
□	—
—	□

APPLIANCES

- Huge external kitchen with single induction burner, shelves hot and cold tap, Garmin Dock, 12v cig, USB's, double 240v, antenna socket and tv bracket
- Massive, approx 270 Litre, fridge / freezer
- Reverse cycle air conditioner
- Gusto Dust Reduction System
- Dual burner induction internal cooktop
- 4 in 1 microwave, grill, convection oven and steamer
- Reversing camera - optional dual lens, single lens as standard
- Roll out awning
- 12V fans for each occupant (2x Couples layout up to 5x for Triple Bunk)
- Bedside charging points USB 240V with LED reading lights
- Dimmable roof, overheads and floor warm LED strips
- Front load washing machine
- 24 inch TV, optional roof top antenna
- TRUMA Gas heater controlled by Vario Digital Climate Control Panel

ELYSIUM	
19'6	21'6
✓	✓
✓	✓
✓	✓
✓	✓
✓	✓
✓	✓
✓	✓
✓	✓
✓	✓
✓	✓
✓	✓
✓	✓
□	□



PLUMBING

ELYSIUM

- 3 x 90 litre fresh water tanks (270 litres total)
- 85 litre grey water tank plus 16 litre urine tank separately plumbed
- Dual external hot / cold showers, either side of tool box
- Water tank manifold allowing all tanks to be filled and drained independently
- TRUMA instant gas hot water system controlled by VARIO Digital Control Panel
- Generous internal shower with channel drain
- Vision RV's simple compost toilet with urine tank plumbed to separate grey tank partition and external outlet

ELYSIUM

19'6" 21'6"

✓	✓
✓	✓
✓	✓
✓	✓
✓	✓
✓	✓
✓	✓

CHASSIS

- Hot dipped galvanised chassis - 150mm x 50mm
- Tandem axle 3500kg ATM with Cruisemaster D035 coupling (pre-approved to upgrade to 4500kg ATM and D045 Chains and Jockey wheel to match)
- 4500kg ATM and D045 Chains and Jockey wheel to match
- Heavy duty trailing arm independent airbag suspension, twin ARB shock absorbers per wheel
- Ventilated disc brakes, large parallel bearings
- Large off-road wheels and tyres (285/70/R17) + 35 offset allows for easy matching to tow vehicle. Five or six studs available with a 35" optional upgrade
- Spare wheel and tyre with upgrade available for second spare
- Heavy duty centre mounted jockey wheel
- Heavy duty rear recovery points of rear chassis rails and modular rear bar for Vision's range of bolt on accessories
- Heavy duty rear bar - Chassis extension providing superior departure angle and unrivalled rear protection strength and to facilitate mounting of accessories

ELYSIUM

19'6" 21'6"

✓	✓
✓	—
—	✓
✓	✓
✓	✓
✓	✓
✓	✓
✓	✓
✓	✓



EXTERNAL

ELYSIUM

- Super strong monocoque composite shell construction providing unrivalled strength, durability, insulation standards and repairability
- Single piece honeycomb composite floor
- Unrivalled electrical assist door, connected to remote central locking for best in industry sealing and security
- Air compressor with outlet for tyre inflation and cleaning
- Dual jerry can holders and twin 4kg gas bottles in front box
- Front storage box with dual sliding shelves and firewood rack, pole carrier and tapered front to act as a stone shield. Raptor coated for superior durability.
- Industry leading heavy duty aluminium extrusion joining all external walls
- Entire van including all cabinetry is 100% timber free construction
- Airbag Control: manual/wireless and auto levelling when stationary, multi situation ride height

ELYSIUM

19'6" 21'6"

✓	✓
✓	✓
✓	✓
✓	✓
✓	✓
✓	✓
✓	✓
✓	✓
✓	✓

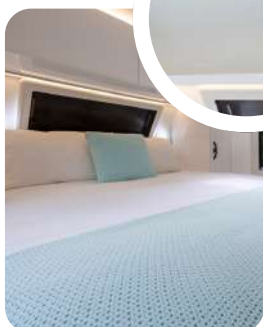
INTERNAL

- Double glazed euro styled windows
- Aluminium cabinetry - laser cut, folded and powder coated
- Lightweight honeycomb door and draw facias
- Solid surface commercial grade acrylic bench and table tops
- Soft close draw runners
- Stylish automotive leather lounges in a selection of colours
- Class leading storage
- Premium queen size pillow-top mattress
- Electric lift under bed storage compartment (for North South Bed configuration)
- Remote central locking door for reliable seal and security

ELYSIUM

19'6" 21'6"

✓	✓
✓	✓
✓	✓
✓	✓
✓	✓
✓	✓
✓	✓
✓	✓
✓	✓



EPIC 7 YEAR Warranty



Read our
Quality
Statement
for Vision RV
Products



Vision RV offer a standard seven-year warranty at no extra cost to you.

Important: All warranties have terms and conditions. Please review them carefully to understand the full scope of coverage.

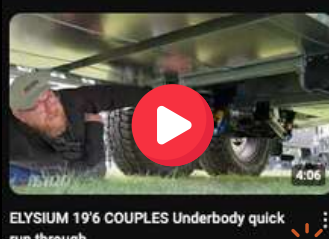
Warranty Coverage:

- First Two Years: Covered directly by Vision RV.
- Years 3-7: Covered by a national and underwritten third party. Their terms and conditions will apply.

For more details: A copy of the Product Disclosure Statement is available upon request and will be provided to you when you receive your Vision RV.

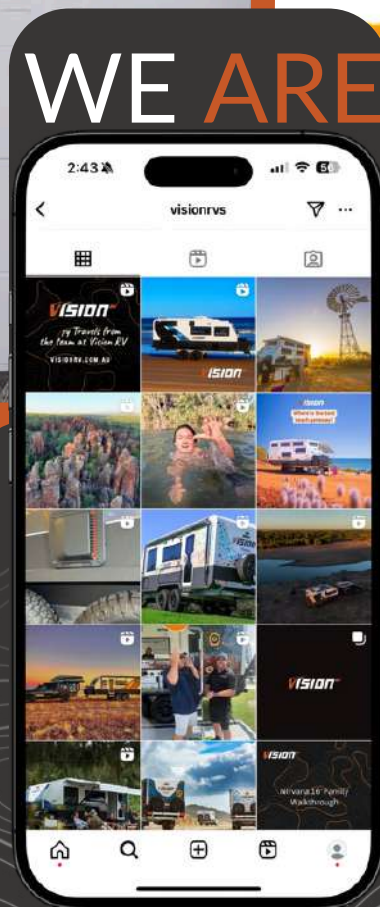
Get Technical With Chris

Scan to watch our videos, visit us at YouTube or in some cases click the video's here to play!



'Choose Vision RV with confidence, knowing that our products are a testament to our commitment to detail, functionality, design excellence, and pioneering innovation. We invite you to experience the difference that sets Vision RV apart in the world of exceptional quality.'

Chris Michel



S

CIAL



SEE THE VANS IN ACTION



- SCAN
- HOLD YOUR PHONE OVER THE QR CODE
- WATCH A VIDEO!



07 5491 1888



290 Nicklin Way, Warana, QLD 4575

VISION^{RV}.COM.AU