



A World Leader  
**100% Made in Australia**

**TRONICS**<sup>®</sup>  
An Aldus Company

# CUSTOMISED LABELLING SOLUTIONS

*To Meet Your Needs*

## **Engineering Reliability & Performance**

Made for high availability, repeatability, speed, volume, format flexibility, quick changeovers and robust longevity.

Production teams will achieve accuracy, consistency and minimal downtime or zero downtime (optional extra).

## **Servicing Australia, New Zealand & the USA**

Have confidence in your machines & receive timely service.

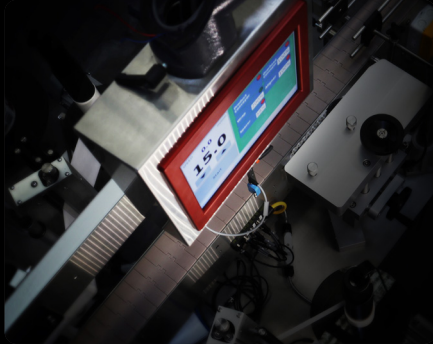
## **Friendly Customer Service**

Understanding and support of the requirements to achieve production goals & improvements.

Project Consultants  
Comprehensive Service Agreements  
Complete Training Programs  
Online Ordering System

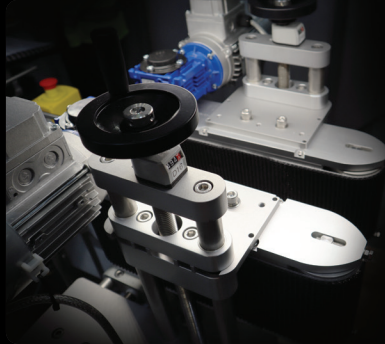
# TRONICS S4

## Customised Labelling Solutions



### TOUCH PANEL

On the fly adjustments are simple and instantaneous. Store up to 50 jobs. Operate up to 4 label heads.



### ADD OR REMOVE MODULES

- Bottle Separator
- Single Scroll (round bottles)
- Dual Scroll (oval bottle)
- Squaring Wheels



### QUICK PRECISE CHANGEOVERS

All components can be adjusted with ease and precision using dial gauges. Quick job changeovers and minimal down time.

Select components feature quick-release adjustments. No tools required.

### INDIVIDUAL MOTORS

Consistent, accurate label placement. All modules contain individual motors that are fully synchronised with the main product conveyor.

### LABELLING HEAD

- Adjustable brush assembly
- Adjustable web guides
- Delrin/stainless peel plate
- Clear label gap detection

### FLEXIBILITY & CUSTOM SOLUTIONS

Produce a final product that shines, Tronics machines are made for your needs.

Applications for round, oval, flat sided, tapered and more.

### ZERO DOWN TIME PRODUCTION

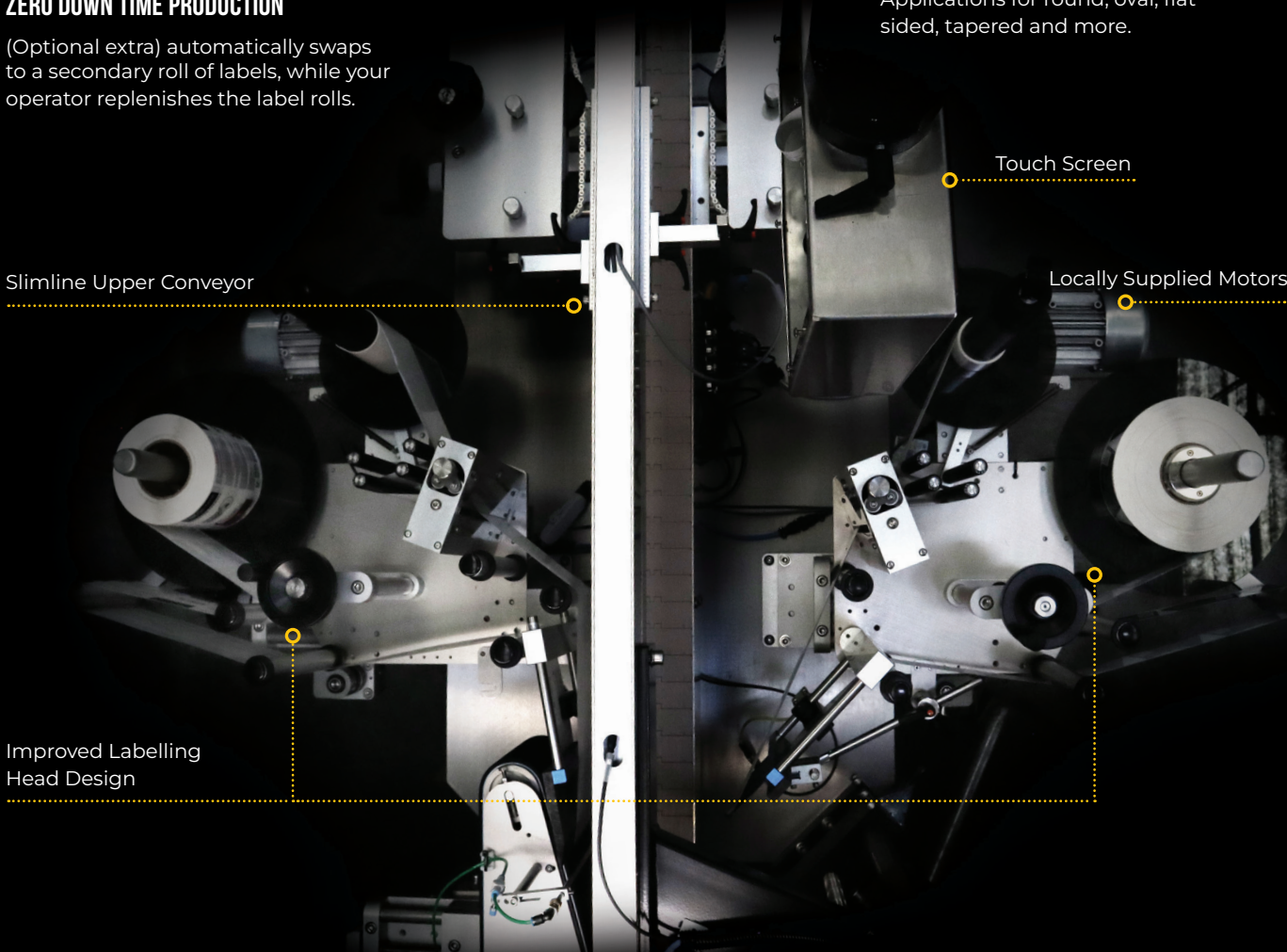
(Optional extra) automatically swaps to a secondary roll of labels, while your operator replenishes the label rolls.

Slimline Upper Conveyor

Touch Screen

Locally Supplied Motors

Improved Labelling Head Design



## Label Specifications

Label Min Thickness: 80micron

Label Reel Core Size: 76mm Inside Diameter

Label Reel Outside Diameter: 330mm

Label Reel Outside Diameter Max: 500mm (opt)

Label Min Size:  
Vertical 15mm/Horizontal 20mm

Label Max Height: 110/210/260mm

Label Gap Min Size: 2.5mm

## Labelling Head Specifications

Dispensing Speed Min: 5m/min

Dispensing Speed Min: 30m/min (std)

Dispensing Speed Max: 60m/min (opt)

Missing Label Detection (opt)

Low-Level Roll Detection (opt)

Clear Label Gap Sensor (opt)

Label Verification (opt)

## Conveyor System

Speed: 6-30m/min

Conveyor Material:  
Plastic/Stainless/Belt/Roller

Widths: 114/190/254mm

Conveyor with Pucks (non-std)

Servo Drive (std)

## Modules

Wrap Module

Wrap Vacuum Module

Orientation System

Overhead Stabilising Conveyor

Single & Dual Scroll (High Speed  
Product Spacing) - Round and Oval  
Bottles

Aligner Chains

Squaring Wheels

Bottle Separator

Crash Gate System

Felt Wipes

Secondary Impression Rollers

Top and Bottom Label Placements

## Job Memory

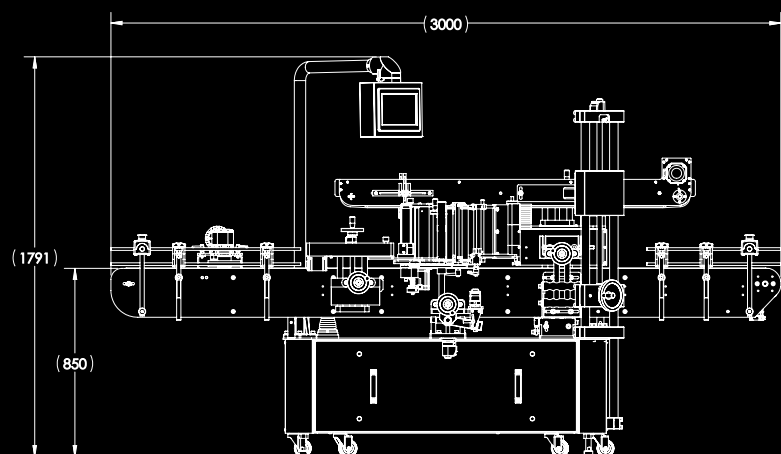
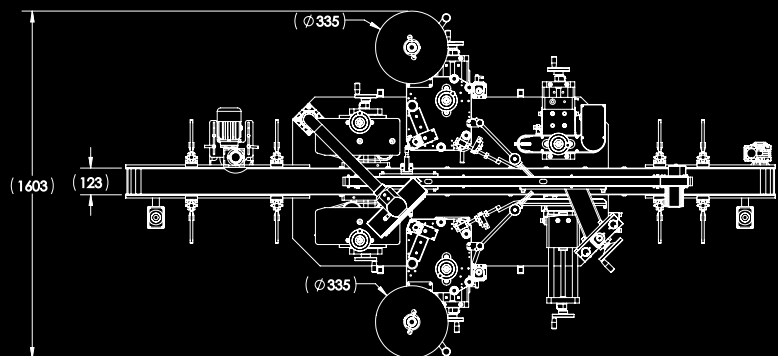
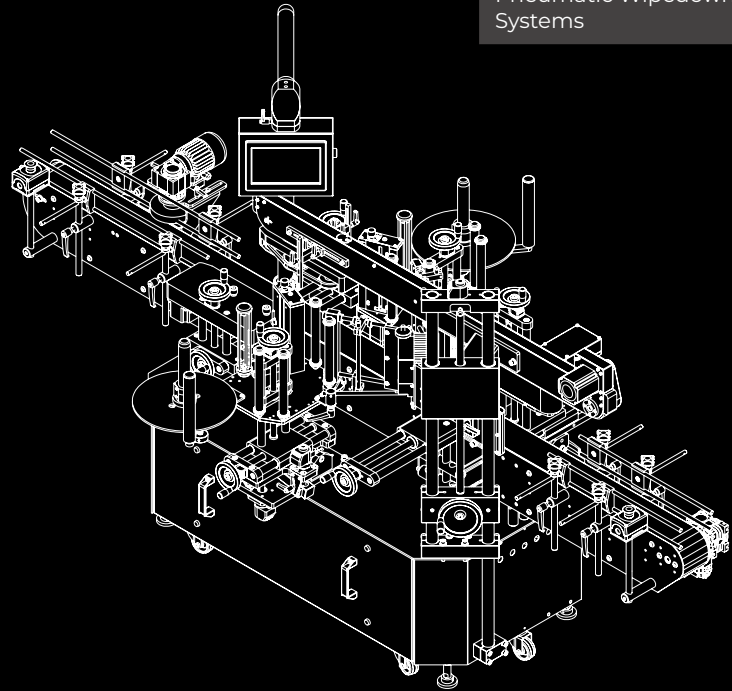
50 Jobs

## Other Options

Warning Beacon

TTO/Printer or Laser

Pneumatic Wipedown  
Systems





**TRONICS®**

An Aldus Company

**Australia**

Ph: 1300 018 330

New South Wales

1 Rhodes St, West Ryde NSW 2114 Sydney, Australia

Victoria

41-43 Lakeside Dr, Broadmeadows VIC 3047

Queensland

388 Newman Rd, Geebung QLD 4034

South Australia

1A West Thebarton Road, Thebarton SA 5031

**New Zealand**

Ph: +64 9 588 4072

Unit 3 23-25 Highbrook Drive,  
East Tamaki, 2013 Auckland NZ

**USA**

Ph: 1-866-465-3415

9070 Louisana Street,  
Merrillville Indiana 46410 USA