



**IBCs & Contact Part
washers**

iwt

ALL ABOUT CLEANING

30 YEARS OF EXPERTISE IN CLEANING SOLUTIONS

IWT offers a complete range of cleaning solutions for the pharmaceutical, nutraceutical, cosmetic markets and related industries.

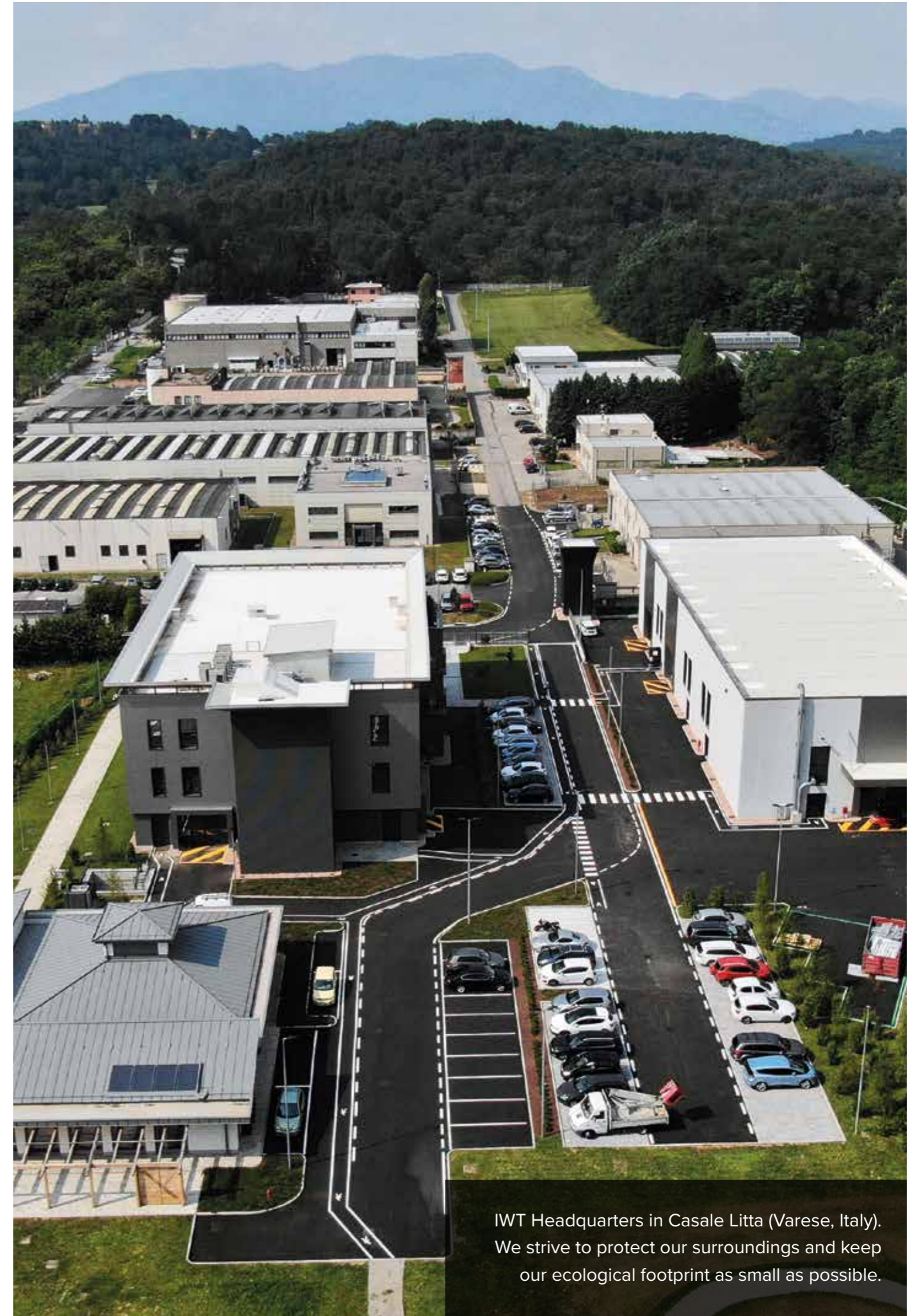
IWT specialises in the design, development, manufacture and installation of outstanding washing solutions. Our manufacturing base in Varese, just a few kilometers away from Milan Malpensa international airport, exceeds 12,000sqm (129,000sqft) of production areas, design studios, training and showroom facilities.

Our production departments are equipped with state-of-the-art laser cutters, orbital welders and robots for processing pipes and tubular parts. The warehouse, fully automated in alignment with the most stringent cGMP traceability requirements, features full overview and management of products and materials. IWT offers in-house advanced 3D design technology and software programming capabilities to ensure complete fulfillment, in terms of quality and flexibility, of any user requirements specifications.

Our comprehensive range of cleaning solutions include FULL cGMP product contact part washers, as well as high pressure washing systems either for bulk containers in cleaning-in-place applications or cabins for bulk parts and containers cleaning-out-of-place.

Our expertise in cold decontamination methods from material transfer through physical barriers mean the decon chambers and airlock systems complement our product range by ensuring complete compliance with cleanroom standards.

You are always welcome to visit our facilities, to feel IWT passion and commitment, to learn first-hand the quality and efficiency in our daily operations.



IWT Headquarters in Casale Litta (Varese, Italy). We strive to protect our surroundings and keep our ecological footprint as small as possible.

2CLEAN

GMP compact Part Washer



Contact Parts cleaning process:

- ▶ Automatic Quick-Lock Connection
- ▶ Full in-house designing and manufacturing of customized racks



IBCs cleaning process:

- ▶ Telescopic cGMP Hydrokinetic header to reach any internal bin surfaces
- ▶ Bottom valve coverage via dedicated in-floor spray ball

▶ Engineered to clean IBCs and contact parts from solid, semi-solid, liquid and aseptic manufacturing sites

▶ Modular design in compliance with the most stringent industry standards

GAMP5	✓
cGMP	✓
ASME-BPE	✓
ISPE baseline	✓
FDA (including 21CFR part11)	✓
CE marking	✓
UL listing	✓

- ▶ Multiple configurations available such as steam or electrical heating, single or double door
- ▶ Two different chamber heights (2000mm-78.7" and 2400mm-94.4") to fit various containers sizes

Minimal building and operational impact:

- ▶ Only 250mm – 10" sump requirements
- ▶ Full frontal access for maintenance

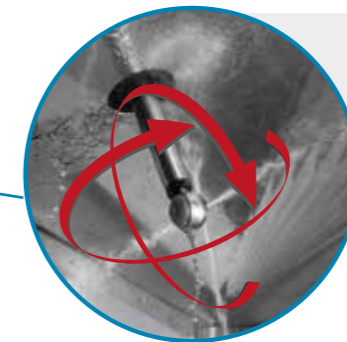
Automation system:

- ▶ Cutting edge automation system GAMP5 compliant with ERES (21CFR Part11) and AUDIT TRAIL functions to guarantee full data traceability and storage
- ▶ Up to 30 fully customizable washing programs from pre-washing to drying and cooling
- ▶ PanelPC configuration for remote connectivity and INDUSTRY 4.0 integration for programs and batch data retrieval, audit trail and log files safe storage on the customer's network

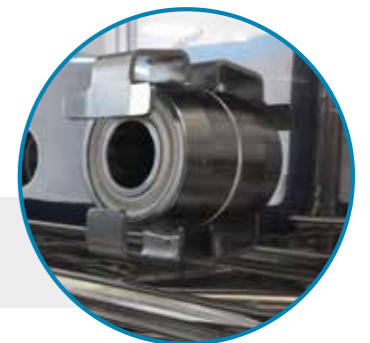


Full cGMP design, featuring:

- ▶ Variable hydrodynamic control, high washing pressure and water flow tuned around each specific application
- ▶ HEPA filtered drying system for bin, parts, chamber and piping
- ▶ Multiple water inlet and chemical dosing systems with flow meter and conductivity control
- ▶ Single Pass Rinse feature via sterile compressed air booster with final conductivity control



- ▶ 360° orbital spray patterns for complete coverage



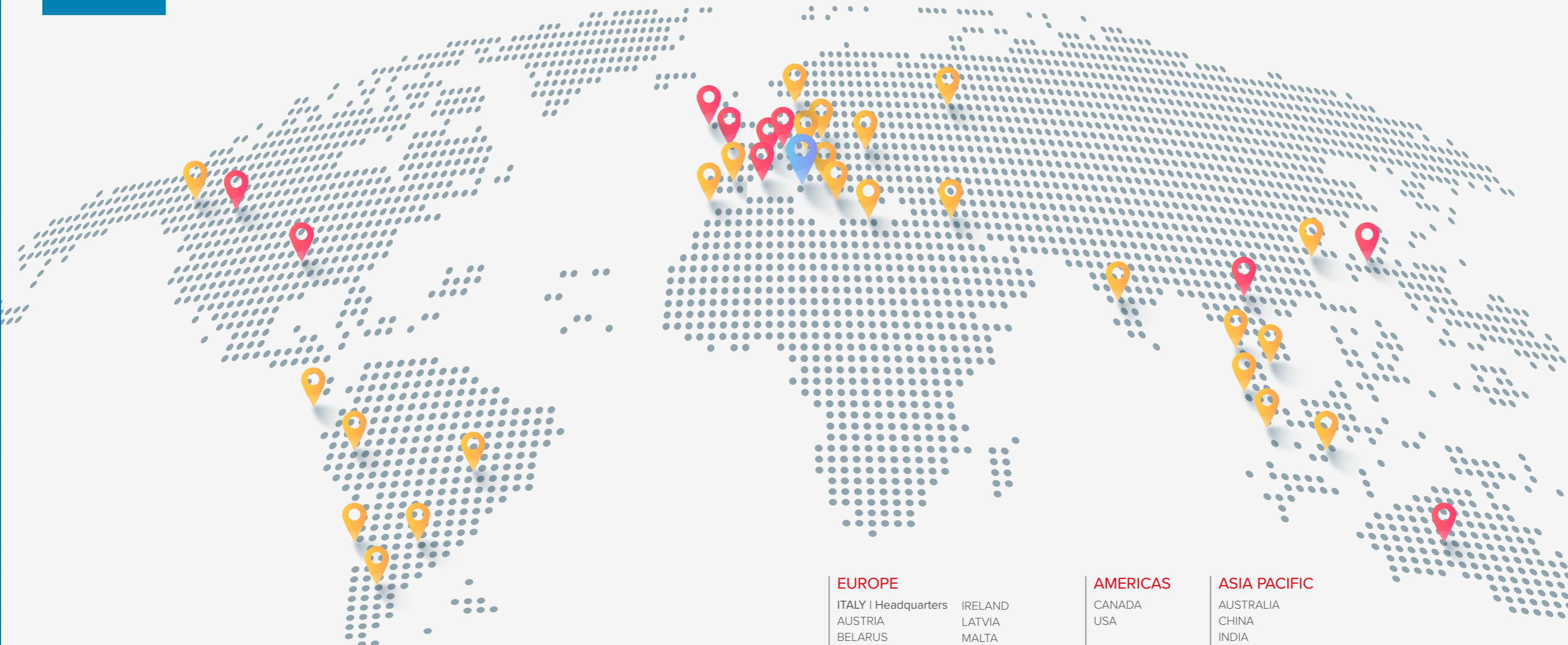
- ▶ Quick lock connection




2CLEAN MODEL	STANDARD	XL
Chamber Dimensions [mm - inch]	1450 x 1350 - 571 x 53.1	
Chamber Height [mm - inch]	2000 - 78.7	2400 - 94.4
Unit Dimensions [mm - inch]	3000 x 1600 - 118.1 x 63	
Unit total volume [m ³ - ft ³]	3000 - 118.1	3650 - 143.7
Ratio	250 - 10	

WE OPERATE LOCALLY. WORLDWIDE.

Being a global company, as part of the Tecniplast Group, means we are well aware of the challenges the world is facing.

Our worldwide network of Subsidiaries, Dealers and Agents allows us to understand different cultures, languages and needs, thus perfectly responding to regional expectations.



-  IWT Headquarters and production site
-  Group Subsidiaries and commercial offices
-  Dealers/Agents

EUROPE		AMERICAS	ASIA PACIFIC
ITALY Headquarters	IRELAND	CANADA	AUSTRALIA
AUSTRIA	LATVIA	USA	CHINA
BELARUS	MALTA		INDIA
BELGIUM	POLAND	ARGENTINE	INDONESIA
CROATIA	PORTUGAL	BRAZIL	JAPAN
CZECH REPUBLIC	RUSSIA	CHILE	MALAYSIA
DENMARK	SLOVAKIA	COLUMBIA	SINGAPORE
ESTONIA	SPAIN	MEXICO	SOUTH KOREA
FRANCE	SWITZERLAND	URUGUAY	THAILANDIA
GERMANY	THE NETHERLANDS		VIETNAM
GREECE	UKRAINE		
HUNGARY	UK		

- 50+**
Countries
- 250M**
annual Group turnover
- 300+**
installations
- 1,000+**
employees worldwide

DESIGNING RESULTS



COMPANY WITH
QUALITY SYSTEM
CERTIFIED BY DNV GL
= ISO 9001 =

contact: pharma@tecniplast.com.au

HEADQUARTERS IWT s.r.l. | Tel. +39 0332.96701
www.iwtpharma.com • E-mail: info@iwtpharma.com
CONTACT US TO FIND YOUR LOCAL DISTRIBUTOR