



Company Overview

About Us

Services & Product Offering

Manufacturing Capabilities

Recyclable Packaging

Compostable Packaging

Water-Soluble Bags

WE MAKE



Bags



Shrink



Films



Stretch



Gloves



Satchels



Liners

ABOUT US



With over 25 years of experience, Adventpac specialises in blown-extrusion manufacturing. Located in Klang, Malaysia we export flexible packaging solutions such as bags and films, worldwide.

In 2018, we expanded our product offering to include compostable and water-soluble packaging alongside our recyclable packaging options. In 2020, we added cast stretch wrap to our product portfolio.

COMPANY SIZE & LOCATION

We're a medium-size business with over 180 employees located in Klang, Malaysia.

- 4 acres premise and expanding
- Distribution hub in Melbourne, Australia
- 50 machinery operators
- 40 administration staff
- In-house laboratory for quality assurance

We manufacture 1200 tonnes of packaging per month and export to over 15 countries.

With blown-extrusion manufacturing, we are able to manufacture the following products:

- bags
- mono-layer films
- co-ex film
- lay-flat tubing
- shrink film

We also manufacture multi-layer stretch film using a cast manufacturing process.



ABOUT US



OUR MISSION

Our mission is to help businesses transition to sustainable packaging solutions and reduce their carbon footprint by innovating and providing environmentally friendly packaging that is reliable and attainable.

OUR VISION

Our vision is to make sustainable forms of flexible packaging the easier and mainstream option.

This vision is a means for us to play our role in creating a better future for our planet and future generations.

OUR VALUES

COLLABORATION

At Adventpac, we believe in forming long-term relationships with our clients.

We love working and sharing our passion for better packaging our clients and have found our long-term partnerships result in new innovations and better solutions for our clients.



QUALITY ASSURANCE

We believe in quality over quantity which is why we have our own laboratory to conduct industry standard tests.

We don't believe in cutting corners and only seek to deliver the best quality possible.

TRANSPARENCY

We believe in honest and open communication. Why? Because it helps us build long-term relationships with our clients.

You can expect us to be forthcoming and honest, always.

PRODUCT OFFERING

OUR PACKAGING FORMATS



Bags



Films/Sheets



Lay-Flat Tubing



Stretch Wrap



Heat Shrink



Gloves

SPECIALITY & PERFORMANCE PACKAGING

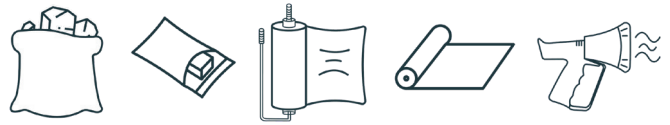
- Greenhouse UV film
- Mulch film
- VCI film / bags
- Cast stretch wrap
- Biohazard waste bags
- Courier satchels / mailer bags
- Timber wrap
- Shrink film / wrap / bags
- Flame retardant films
- Fully water soluble packaging
- Mining sample bags
- Form fill seal films
- Anti-static films / bags
- K-resin film
- Freezer bags
- Compostable packaging
- Builders / Construction Film
- Melt bag (EVA)
- Furniture & mattress covers
- Cargo sheets / covers

OUR BRANDS

Our packaging formats come in a variety of materials. We've branded them according to their special characteristics.



- Polyethylene-based packaging
- LLDPE, LDPE, MDPE, HDPE
- Reusable and recyclable
- Versatile with long-lasting durability



- 100% compostable packaging
- Certified to AS 4736 & 5810
- Breaks down in 6-8 months
- Leaves zero microplastics



- Made from polyvinyl alcohol (PVOH)
- Dissolves in warm/hot water
- Non-toxic and marine safe
- Zero-waste at end-of-life



MANUFACTURING CAPABILITIES

FULLY CUSTOMISED PACKAGING

We provide **fully customisable packaging** solutions because everyone has different needs. From the specifications to the packing configuration, we can meet your needs and ensure your packaging is **fit for purpose**.



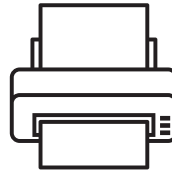
Sizing W X L



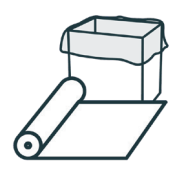
Gauge
(thickness)



Colour



Custom Print
(up to 7 colours)



Packing Config.
(in rolls/cartons)

MANUFACTURING FACILITY & CAPACITY

Our facility is located in Klang, Malaysia and covers 4 acres premise and expanding.

On average, we manufacture 1200 tonnes of packaging per month, 50% of which are exported.

We currently operate:

- 40 extruders
- 40 cutting machines
- 8 printing machines
- 2 castlines

We currently manufacture using the blown-extrusion and cast line processes. These methods allow us to produce flexible bags, films and stretch wrap.



FILMS / BAGS

| TYPES | Min. Thickness (um) | Max. Thickness (um) | Min. Width (mm) | Max. Width (mm) |
|-------------------|---------------------|---------------------|-----------------|-----------------|
| LDPE | 25 | 250 | 75 | 12,000 |
| HDPE | 12 | 100 | 380 | 2,000 |
| Compostable | 15 | 190 | 250 | 12,000 |
| Water-Soluble | 25 | 40 | 100 | 900 |
| Cast Stretch Film | 15 | 30 | 100 | 1500 |

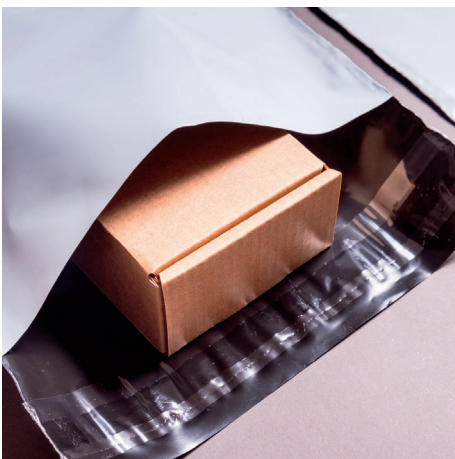
PRINTING

| PRINTING | Min. Width (mm) | Max. Width (mm) | Colour Quantity (min.) | Colour Quantity (max.) |
|------------|-----------------|-----------------|------------------------|------------------------|
| Blown Film | 100 | 2,000 | 1 | 7 |
| Cast Film | 100 | 1500 | 1 | 7 |

1mm = 1000um

0.1mm = 100um

Please contact our sales team for any special sizes.



MONO-LAYER AND CO-EXTRUDED BAGS & FILMS

We manufacture recyclable packaging from a single-plastic material such as:

- Linear Low Density Polyethylene (LLDPE)
- Low Density Polyethylene (LDPE)
- Medium Density Polyethylene (MDPE)
- High Density Polyethylene (HDPE)



WHY CHOOSE POLYETHYLENE?

- Economical for various industries
- Recyclable and contributes to circular economy
- Versatile across performance & storage conditions
- Available in a wide variety of packaging formats. (see below)
- Long-lasting and durable

| PACKAGING FORMATS | SPECILIASED PACKAGING |
|---|--|
| Bags Films/Sheets/Lay-Flat Tubing Stretch Wrap Shrink Film | Anti-Static Bags VCI Film Flame retardant film UV stabilised film Co-ex film K-resin Anti-rodent bags Melt bags (EVA) |

WHY CHOOSE ADVENT STANDARD?

| | | | |
|--|---|--|---|
| <div data-bbox="84 1574 199 1691" data-label="Text"> <p>1</p> </div> <div data-bbox="84 1736 359 1803" data-label="Section-Header"> <p>USING RECYCLED MATERIALS</p> </div> <div data-bbox="84 1859 414 2080" data-label="Text"> <p>Our bags and films can be made from 100% recycled materials. This means diverting waste away from landfill!</p> </div> | <div data-bbox="414 1574 529 1691" data-label="Text"> <p>2</p> </div> <div data-bbox="414 1736 662 1803" data-label="Section-Header"> <p>100% RECYCLABLE</p> </div> <div data-bbox="414 1859 791 2080" data-label="Text"> <p>Our Advent Standard product line is entirely recyclable! Be part of a closed-loop economy and choose recyclable packaging.</p> </div> | <div data-bbox="791 1574 906 1691" data-label="Text"> <p>3</p> </div> <div data-bbox="791 1736 1061 1803" data-label="Section-Header"> <p>ZERO COMPROMISES</p> </div> <div data-bbox="791 1859 1149 2080" data-label="Text"> <p>Recycled packaging can have its compromises but we only use the best polymers for quality assurance and customer satisfaction.</p> </div> | <div data-bbox="1149 1574 1264 1691" data-label="Text"> <p>4</p> </div> <div data-bbox="1149 1736 1372 1803" data-label="Section-Header"> <p>IN-HOUSE RECYCLING</p> </div> <div data-bbox="1149 1859 1536 2080" data-label="Text"> <p>By supporting us, you're supporting a company that practices what it preaches. We do our own recycling to minimise wastage.</p> </div> |
|--|---|--|---|

MADE FROM RECYCLED CONTENT

We manufacture packaging made from a percentage of recycled materials which includes post-industrial recycled (PIR) and post-consumer recycled (PCR) materials. This allows us to maximise the yield of every bit of material that is readily available thus, minimising our usage of non-renewable, virgin materials.

However, this has its challenges and limitations particularly with food-grade packaging which requires virgin materials.

CHALLENGES & LIMITATIONS

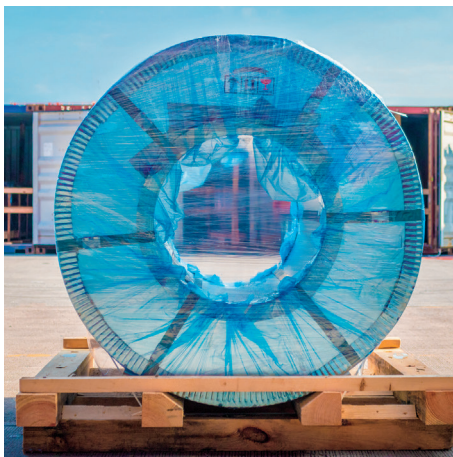
- **Post-consumer waste:** whilst accessing post-manufacturing and pre-consumer waste is easy and controllable, only 1% of post-consumer waste is recycled due to poor recycling channels
- **Contaminants:** unfortunately studies have shown that recycled plastics can contain significant levels of contaminants making them unsuitable for food-grade packaging
- **Pricing & Availability:** unfortunately, due to shortages of high quality recycled materials, using virgin materials remains to be more economical

IMPROVING RECYCLABILITY

Choosing recyclable packaging or packaging that contains recycled content is a great way to minimise landfill waste and contribute to a circular economy.

However, there are some ways you can improve the recyclability of your plastic packaging:

- Avoid mixing polymers as this renders the packaging unrecyclable
- Minimise the use and complexity of your prints as this results
- Avoid using additives such as UV stabilisers if possible as they reduce the value of the recycled resin
- Educate consumers! The more we help people understand how and where to recycle their plastic waste, the more will end up being recycled!



COMPOSTABLE PACKAGING

We manufacture compostable packaging made from plant-based materials that break down in a specified time frame (see certification). These bioplastic packaging options don't leave behind microplastics and contribute to soil structure, and plant health. Our compostable materials include:

- PBAT
- PLA
- TPS



LIMITATIONS

- **Shorter lifespan (vs PE):** the material and packaging may begin to degrade prior to usage or disposal, thus reducing performance
- **Poor access to facilities:** many consumers do not have easy access to industrial composting facilities or composting solutions for the home
- **Limited in use:** unlike PE, compostable packaging is limited in its uses and not suitable for all packaging requirements
- **Confusion of terminology:** there is a lot of confusion among consumers between the terms "biodegradable" and "compostable" (see comparison on the right)
- **Costly compared to PE:** unfortunately compostable packaging is significantly more expensive compared to conventional LDPE/HDPE
- **Requires proper disposal:** compostable packaging requires 'composting' conditions to break down properly and won't achieve its purpose (zero waste) in landfills.

BENEFITS - WHY CHOOSE ADVENT GREENPAC?

1

MADE FROM RENEWABLE CORN

Our bags are made from GMO-free corn that's unfit for human consumption. That means they don't impact global food supplies!

2

NO MICROPLASTICS

Our bags don't leave behind nasty microplastics when they break down unlike regular plastics. How good is that?

3

CERTIFIED COMPOSTABLE

We only use certified compostable materials which means our bags will **completely break down within 6-12 months.**

4

SAFE FOR THE PLANET

Our bags are free from heavy metals and toxins which means they are not harmful to earthworms and critters!

CERTIFICATION OF COMPOSTABILITY AS 4736 & AS 5810

We only use materials that have been certified to be 100% compostable. Our materials meet the most stringent compostability standards set by the Australian Bioplastics Association (ABA) for home and industrial composting.

These materials have been tested for ecotoxicity and earthworm survival. They are also certified to break down in just 6-9 months.

AS 4736: Industrial Compostable

AS 5810: Home Compostable



"BIODEGRADABLE VS COMPOSTABLE"

There is a common misconception that 'biodegradable' plastics are the same as 'compostable' or vice versa. However, most users are referring to oxo-degradable plastics when they say 'biodegradable'.

Oxo-degradable is now banned in many countries and leaves behind nasty microplastics. Compostable packaging on the other hand, does not leave microplastics behind and is much safer on the environment.



THE LIFE OF A COMPOSTABLE BAG

BORN FROM CORN

Our compostable resin is sourced from GMO-free corn; unfit for human consumption.



MADE INTO BAGS

Our compostable bags are made the same way as plastic bags; through blown-extrusion.



PACK YOUR GOODIES!

Pack your precious goodies in our compostable bags; just like you would with plastic bags.



IMPRESS YOUR CUSTOMERS

Impress your customers with your environmentally-friendly compostable packaging!



COMPOST IT!

The bags go in a compost bin or worm farm to become plant food and not to landfill! #ZeroWaste



WATER-SOLUBLE BAGS



ZERO-WASTE BAGS

We manufacture water-soluble bags from polyvinyl alcohol which is non-toxic and marine-safe.

These bags are soluble in warm or hot water, disintegrating at 40C and 70C respectively. They offer users a zero-waste end-of-life solution.



LIMITATIONS

- Limited applications: unlike PE, our water-soluble bags are limited in its usage as it is primarily designed to be single-use only
- Must be kept dry: these bags require a little more care and need to be kept dry if used for storage and transport. Contact with water can reduce its structural integrity.
- Costly: unfortunately, the material for our water-soluble bags is expensive making this a costly alternative to single-use plastics however, it does have a zero-waste end-of-life solution!

SPECIAL PROPERTIES

- Naturally anti-static making it suitable for packaging electronics.
- Hydrophilic: these bags love moisture and will absorb the available moisture in its environment
- Non-toxic: polyvinyl alcohol is commonly used in medicine and food, safe for human consumption (we don't recommend eating the bags though!)

WHY CHOOSE ADVENT HYDROBAG?



DISSOLVES IN SECONDS

Our bags dissolve within seconds of being in contact with warm (40°C) or hot (70°C) water. Watch it disappear in front of your eyes!



LEAVES ZERO RESIDUE

Advent Hydrobag is washing machine safe! They dissolve without leaving any residue; making it ideal for laundry bags.



MARINE SAFE & NON-TOXIC

Our bags are made from a non-toxic blend of polyvinyl alcohol that is FDA-approved. This means they won't be harmful to marine-life when dissolved!



3X STRONGER THAN LDPE

Advent Hydrobag is up to 3 times stronger than LDPE at any given gauge. This makes our bags ideal for carrying heavy loads of laundry, or shopping!

BENEFITS OF USING ADVENT HYDROBAG

SAFER LAUNDRY PRACTICES

Benefits:

- ✓ no un-bagging required
- ✓ high weight capacity
- ✓ printable, with coloured options available, for easy identification

Mitigate risk and exposure to contaminants with our laundry bags.

Used by UK's NHS, our bags help to **minimise exposure** to soiled linen or contents during handling and transport.



BETTER RETAIL PACKAGING

Special properties:

- ✓ moisture absorbent
- ✓ naturally anti-static
- ✓ easily disposable in the home

Our **hydrophillic** and naturally **anti-static** bags are suitable for retail packaging including electronics which need specialised bags. Best of all, they are **easily disposed** of in homes.



SINGLE-USE, WITHOUT WASTE

Benefits:

- ✓ soft and flexible
- ✓ high clarity
- ✓ ease of use

Get the benefits of single-use plastics without the waste by choosing Advent Hydrobag. It's **soft, flexible, easy to use** and possesses the clarity of LDPE. With optional printing and colour options, they can be customised to your needs.



THE LIFE OF ADVENT HYDROBAG

MADE FROM PVOH

Our water-soluble bags are made from a patented blend of polyvinyl alcohol.

MADE INTO BAGS

Our water-soluble bags are made the same way as plastic bags; through blown-extrusion.

BAG THAT LAUNDRY

Fill our heavy duty water-soluble bags with contaminated/soiled linen, safely!

INTO THE WASHER IT GOES

There's no need to unbag contaminated linen into the machine; just throw it all in!

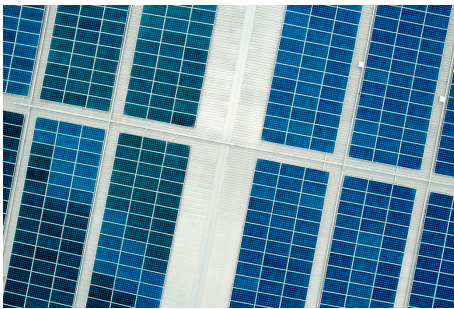
WASH IT DISAPPEAR!

Start your warm or hot water wash cycle and watch the bags dissolve before your eyes!

SUSTAINABILITY

Helping businesses transition to more sustainable forms of packaging is only a part of the solution. How we do that is just as important.

At Adventpac, we do our best to reduce our carbon footprint to ensure that we minimise our impact on the environment as we help others do the same. Read on about our efforts in our journey to becoming more sustainable.



Solar Powered Manufacturing

In 2019, we started using solar energy for our manufacturing plant to reduce our reliance on non-renewable energy.

Since then it has generated over 4000 kWh per year which is enough to power 265 Malaysian homes every year.



Rain Harvesting

Being in a tropical country means having a lot of rain throughout the year.

We've taken advantage of this by harvesting thousands of gallons of rainwater every month which we use for flushing our toilets and cleaning the factory floor.



In-House Recycling

Only 1% of post-consumer plastic waste is recycled and whilst we can't do a lot to change that, we can however, minimise post-production waste.

Since 2018 we have been operating our own recycling machinery to maximise the yield of our raw materials and ensure you get the best recycled materials.



ADVENTPAC®

ENQUIRE WITH US TODAY

CONTACT US

enquiry@adventpac.com

+603 3250 0780

VISIT US

Lot 517 Jalan Jati Kiri, Klang,
Kapar, Selangor 42200
Malaysia

WEBSITE

www.adventpac.com

WE ARE CERTIFIED:

