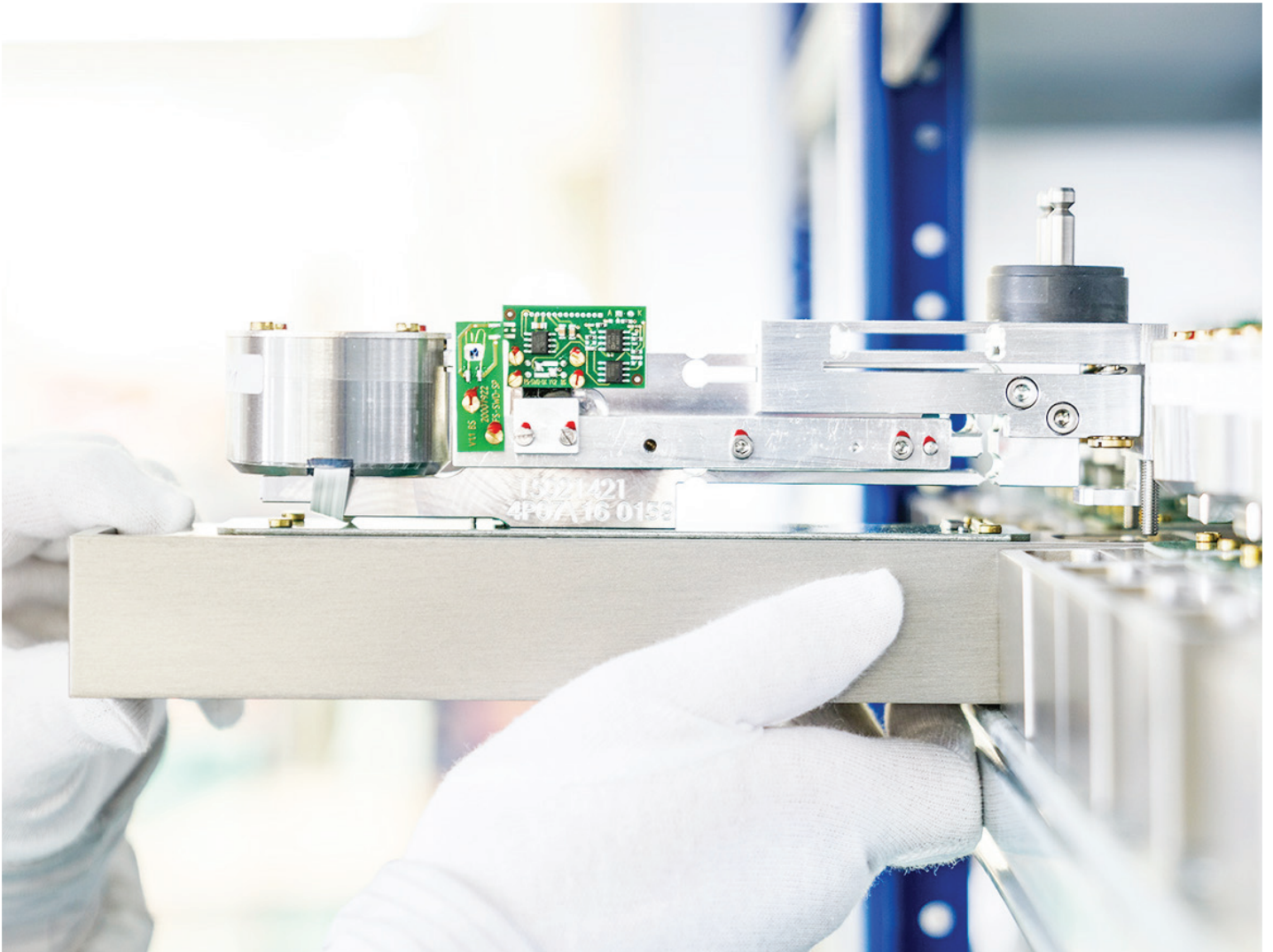


/ Products & Solutions



Wipotec is a **world market and technology leader** for intelligent **weighing and inspection technology**. State-of-the-art systems for track & trace, marking and labeling complete this core competence.

/Our claim

Innovation.

We love innovation and look for optimization potential every day! The focus is on the needs of our customers. We develop solutions for you.

Passion.

We live and work by the code of making everything possible! We look for the best solution for a wide variety of applications and always push boundaries further than is conceivable.

First.

Of course, customer satisfaction and meeting your needs come first. But we also want to build the best machines and be the fastest. “First” that is! When innovation meets passion, you will be the first.

A large industrial factory floor with various machines and equipment. The floor is light-colored and has several circular floor drains. In the foreground, there is a long, complex machine with multiple rollers and a white material being processed. To the right, there is a blue scissor lift with two computer monitors on it. In the background, there are more machines, shelving units, and a few people working.

/ Made in Germany

Solutions from a
single Source

We are a traditional, founder-managed company with 35 years of experience with a depth of production of outstanding 85%. Offering customized solutions from a single source. From hardware and software development to production, integration, and downstream service. We manufacture precision machines in premium quality on 48,000 square meters of production space:

**Designed, engineered, and manufactured
in Germany.**

/Our Products

Flexibility Unlimited

Wipotec provides you with comprehensive technologies to make your production more efficient and safer. From weigh cells and weighing kits, checkweighers, optical inspection units and X-ray scanners, aggregation and serialization units, systems for marking and labeling to checkweighers and DWS systems (Dimensioning Weighing Scanning).

Everything revolves around precise and permanently reproducible results within the shortest time spans. Our portfolio includes offerings such as Active Vibration Compensation and weighing accuracy analysis.

Of course, this also includes the integration of the modules into your line and the development of new technologies that make even faster and smoother processes possible.

You have Problems – We create Solutions.

Areas of Application

- › Dynamic Weighing
- › Weigh Cells
- › Product Inspection
- › Track & Trace
- › Marking and Labeling

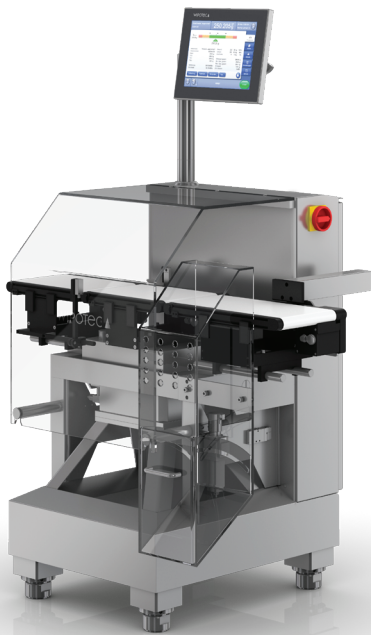
Service

- › 24/7 Hotline availability through global service network with certified Wipotec technicians for on-site support.
- › Professional installation and optimization based on customer needs ensures smooth start-up.
- › European manufacturer – initial calibration, exchange, and overhaul of calibrated parts.
- › Preventive maintenance, setup, and optimization of your Wipotec products.
- › Fast on-site repairs using original parts.
- › Calibration checks and re-adjustments of the entire system if required.
- › General product and target objective training to improve efficiency.
- › Remote maintenance first hand (with appropriate hardware) for urgent jobs.

/Checkweighers

100 % dynamic weight control in running production. Avoid overfilling and underfilling or classic end-of-line control with a capacity of up to 650 pcs/min (calibratable). As wash down, with metal detector and many other modularly applicable variants for optimal product handling no matter whether folding box, bag, sachet, tube,

can, bottle, blister, tray etc. Can also be combined with AVC, camera and labeler. Big Data Management via XML or OPC UA interface or with Comscale 4 - production data in real time for quality control and process improvement.



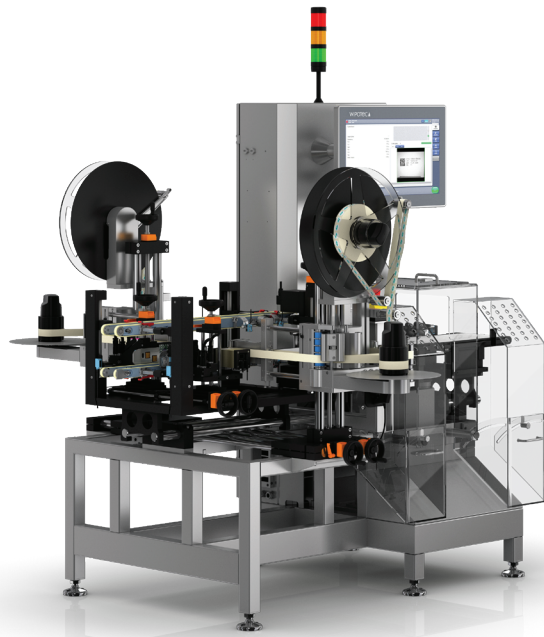
/Weigh Cells



Unlimited flexibility through an unprecedented variety of over 20 different weigh cell types to meet a wide range of requirements for machine and plant builders. Modular multi-track systems, active vibration compensation, IP65 and IP69K for wet cleaning, a wide range of interfaces for integration into existing systems, connector outlet at the rear or bottom, mounting from above or below, load application at the top or front, and an integrated test weight.

/Track & Trace

A holistic track & trace system is the basis for consumer protection against counterfeiting and for traceability. From batch coding to serialization and aggregation. Thanks to ConfigureFast there is no need to teach the camera when changing products. Modular, scalable, and integrable into existing lines.



/Marking and Labeling

Weighing products and detecting for metals, labeling, or marking and then inspecting them, integrated in one system. All functions in one user interface. For bottles and vials, for cups and cans,

made of glass, plastic, or sheet metal. For trays, jars, pouches, sachets, blisters, tubes and folding boxes or cartons. In the tightest of spaces.



/X-ray



X-ray inspection systems offer a wide range of applications such as foreign body detection, completeness check, filling level check, shape check, position and distribution control, clip examination (closure), mass determination, break and



hole detection or automated maturity determination for cheese. In combination with checkweighing, metal detection and optical label inspection as an All-in-One.

/Mail & Logistic

Catchweighers in the high-performance range: from postcards to 150 kg parcels and up to 20,000 parcels per hour. In combination as double or triple scales for 30% more line-efficiency. With active vibration compensation (AVC) ideal for harsh environments in sorting centers. This is another reason why the world's major parcel service providers are among our customers.



**Take your Production
to the highest Level:**
Fast, cost-saving, and profitable!



Headquarters

Wipotec GmbH
Adam-Hoffmann-Str. 26
D-67657 Kaiserslautern

Tel.: +49 (631) 34146-0
info@wipotec.com
wipotec.com

WIPOTEC 