

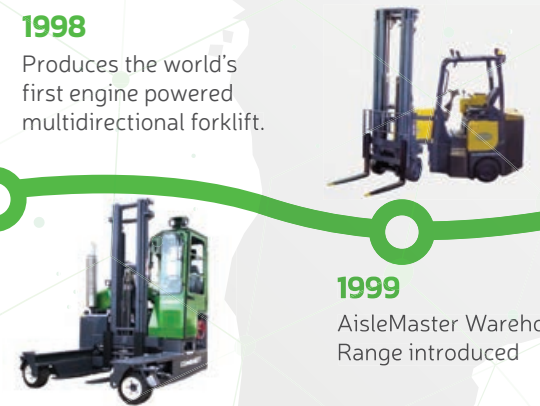
# COMBILIFT 25

LIFTING INNOVATION *Years*



# Contents

<b>Celebrating 25 years in business</b>	<b>3</b>	<b>COMBi-MR</b>	<b>24</b>	<b>COMBi-MG</b>	<b>41</b>
<b>Safety - Storage - Efficiency</b>	<b>4</b>	The Most Agile Combilift	24	Handling and conveying extremely large loads	41
Supporting Your Industry	5	<b>DYNAMIC 360°™ STEERING</b>	<b>25</b>	<b>COMBi-CSS</b>	<b>42</b>
Innovation, Flexibility & Service	6			Load A Full Container in Under 6 Minutes	42
Supporting You, Locally	7	<b>Combilift Pedestrian Range</b>	<b>26</b>	<b>COMBi-SBT</b>	<b>43</b>
A World Class Team	7	Multi-Position Tiller Arm - Innovation in Safety	26	Shuttle Transporting pre-staged concrete	43
Empowering Our Customers' Sustainability	8	<b>COMBi-WR4</b>	<b>27</b>	<b>COMBi-LC</b>	<b>44</b>
Focused On Sustainability	9	The Original 4-way Pedestrian Stacker	27	Remote controlled Tandem Load Carrier	44
Green Production Process & Facilities	9				
<b>FREE Warehouse Planning</b>	<b>10</b>	<b>Combilift Automated Guided Vehicles</b>	<b>28</b>	<b>Telematics</b>	<b>45</b>
Combilift Warehouse Consultancy	11	<b>COMBi-AGT</b>	<b>29</b>	<b>Poultry</b>	<b>46</b>
Free Consultancy Service	11	Lower operating costs	29	<b>COMBi-LR</b>	<b>46</b>
		Improve workplace safety	29	<b>COMBi-RT</b>	<b>47</b>
<b>The Combilift Advantage</b>	<b>12</b>	<b>Combilift Warehouse Solutions</b>	<b>30</b>		
Work Seamlessly Indoors & Out	12	<b>Aisle Master</b>	<b>31</b>		
		The Articulated Forklift That Does It All	31		
<b>Long Load Handling Specialists</b>	<b>13</b>	Operates Seamlessly Inside & Out	31		
<b>C-SERiES</b>	<b>14</b>	Smaller Aisles Mean More Racking	32		
The Original Multidirectional Forklift	14	Superior Ergonomics	32		
The Safest Way to Move Your Products	15	<b>Aisle Master Cold Store</b>	<b>33</b>		
<b>Combi-CB</b>	<b>16</b>	Warm and Productive in a Cold Climate	33		
The Most Compact Counterbalance Forklift	16	<b>Aisle Master Order Picker</b>	<b>33</b>		
Maximum Productivity	17	Order Picking Made Easy	33		
Maximum Safety	17	<b>COMBi-WR</b>	<b>34</b>		
<b>Combi-CB70E</b>	<b>18</b>	The Pedestrian Stacker for Very Narrow Aisles	34		
Award Winning Traction	18	<b>COMBi-CS</b>	<b>35</b>		
<b>Combi-CUBE</b>	<b>19</b>	Packed With Innovation	35		
Vibrant, Visible, Safe	19	<b>COMBi-PPT</b>	<b>36</b>		
Intelligent Seat Rotation	19	High Capacity Powered Pallet Truck	36		
<b>COMBi-SL</b>	<b>20</b>	<b>COMBi-OP</b>	<b>37</b>		
The Most Versatile Sideloader	20	The Perfect Picking Platform	37		
The Perfect Forklift Tailored For Your Needs	20				
Reliable in the Toughest Conditions	20	<b>Containers &amp; Oversized Loads</b>	<b>38</b>		
<b>COMBi-4WSL</b>	<b>21</b>	<b>COMBi-CS</b>	<b>39</b>		
The 4-Wheel Sideloader for the Long Haul	21	Handling Containers & Oversized Loads	39		
<b>THE COMBi-FSE</b>	<b>22</b>	Tough & Reliable	40		
Maintenance Made Easy	22	Oversized Loads	40		
<b>COMBi-ST/GT</b>	<b>23</b>	Benefits	40		
Forklifts to Handle the Narrowest of Aisles	23				







# Celebrating 25 Years

*This year Combilift is celebrating 25 years in business.*

For 25 years, Combilift has been successfully helping its customers to safely handle long loads and unlock every inch of their storage Space. A lot has changed since we began in 1998, especially in the growth of our talented and dedicated staff. Combilift now employs over 800 people in our Monaghan headquarters and support offices worldwide.

**2010**

Launch of Straddle Carrier for container handling



**2014**

Warehouse Range expands to include the Pedestrian trucks

**2018**

Combilift Celebrates 20 years in business



Opens new purpose built Manufacturing Facility



**2023**

75,000th truck rolls off assembly line in march 2023

**2023**

Combilift Celebrates 25 years of Lifting Innovation

*And we're just getting started...*

# Improve Safety - Maximise Storage - Increase Efficiency

At Combilift we are passionate about providing material handling solutions, that increase efficiency, maximise storage and ensures you can work as safely as possible.

By utilising solid engineering and technology you can count on, Combilift has become the go-to long load handling solutions provider.

Our pioneering product range includes multidirectional, articulated and pedestrian forklifts as well as straddle carriers and container loaders.

Whether you are handling long and awkward loads, palletised goods, containers or extremely oversized products there is a Combilift to fit the bill.



## Safety

Our innovative safety technology means you can move goods around your facility safely with less risk of product damage or injury to those around you.



## Storage

Multidirectional operation means our trucks require much less room to manoeuvre long loads safely. Aisle widths can be reduced, increasing the amount of space available for storage.

By switching to Combilift solutions you could gain up to 100% extra storage space.



## Efficiency

By using solid engineering and straightforward design, Combilift's are built for gruelling schedules.

4-way steering and the ability to operate indoors and out, mean the largest loads can be efficiently moved around your facility in all weather conditions.



## *Supporting Your Industry*

Whether you work in the steel, timber, concrete, shipping or logistics industries, Combilift has a handling solution to suit your needs.

Long and awkward loads are what we specialise in but we have developed a range of innovative solutions to make your business safer and more productive





# Innovation, Flexibility & Service

Innovation, Flexibility and Service are the core values on which Combilift's success is built and has seen us become the world's fastest-growing forklift manufacturer.

Proudly based in Monaghan in the heart of rural Ireland, our global headquarters host a team of expert staff that work tirelessly to find solutions that improve safety, enhance storage and increase the productivity of our customer's operations.

We produce a range of product handling solutions, including multidirectional forklifts, side loaders, pedestrian stackers, straddle carriers and mobile gantries.





## *Supporting You, Locally*

We have offices and dealer support facilities all over the world including the US, UK, Canada, Europe, Asia and Australia.

Our team of sales, support, engineering and training experts will all go the extra mile to ensure customer satisfaction is guaranteed.

More than 80,000 machines have been shipped to 85 countries since the company was founded in 1998.

## *A World Class Team*

Our highly skilled and dedicated team of over 800 employees in Irelands designs, manufactures and ships material handling solutions worldwide.



**80,000**  
**Trucks**  
**in**  
**85**  
**Countries**



At the helm are founders Robert Moffett and Martin McVicar whose leadership has guided Combilift to unparalleled growth. Combilift is a debt-free company and a major local employer. It offers the most extensive range of specialist handling solutions available from any single manufacturer in the world.

## ***Empowering Our Customers' Sustainability***

At Combilift, we are committed to empowering our customer's sustainability efforts by providing them with environmental and economic value. All our material handling solutions have sustainability at their core, designed to maximise efficiency, storage capacity and improve safety. A core element in the Combilift ethos is to help customers increase storage without the need to expand the size of their facility, leading to reduced energy usage and associated costs such as heating, lighting and maintenance.

***We produce versatile forklift technologies that can fulfil multiple roles, inside and out, reducing fleet size, thus reducing carbon footprint.***

The carbon footprint can be further reduced by using electric forklifts, and our diesel and LPG engines adhere to the strictest emissions and efficiency guidelines. In addition, our solutions are over-engineered to expand the truck's lifespan and reduce the costs associated with maintenance.





## Focused On Sustainability, committed to a better future


Understanding the available space in your warehouse and how it is currently being used is critical to incorporating a sustainable supply chain and making the greatest use of your storage unit. Before expanding your facilities or relocating to a larger location, why not explore space-saving strategies to optimise your existing footprint.


Our 46,500 m2, state of the art manufacturing facility places focus on sustainability and operates to the highest standards.

- 30 percent of its roof space is covered in skylights, enabling staff to work in natural daylight.
- Extra Lighting is provided through 1,100 LED lights with individual sensors.
- Energy is provided by Solar panels supplying 185 kW of energy.
- A 1 MW biomass plant fuelled by recycled wood heats the spray booths and assembly area.
- 110,000 litres of rainwater is harvested for use throughout the facility.
- Certified to ISO 9001 international quality management system, ISO 14001 Environment Management and OHSAS 45001 Occupational Health and Safety Assessment Series

Creating up to **50%** Extra Storage 


Designed to reduce your fleet size by effectively becoming **3** forklifts in **1**, a sideloader, counterbalance and narrow aisle forklift. 


**92%** of components used in the assembly of our trucks are recyclable 

**90%** of our electric truck's batteries are recycled. 

Over **60%** of Combilift Forklifts are electric powered. 

Parts stocked locally with over **300** dealers in **85** countries, eliminating unnecessary airfreight 

Our initiatives provide Combilift with the equivalent energy saving of **47,300** Trees 

Helping each of our Aisle Master customers reduce their carbon footprint by an average of **80** tonnes per year 



## Green Production Process & Facilities

We have been certified to international quality and safety management standards. Our production facility has been awarded ISO 9001 international quality management system, ISO 14001 Environment Management and ISO 45001 Occupational Health and Safety Assessment Series.

We also strive to carry out sustainable procurement; a large proportion of our annual sourcing comes from suppliers in Ireland, many of whom have been with us since our inception in 1998, contributing to sustaining our local economy and reducing transport impacts.

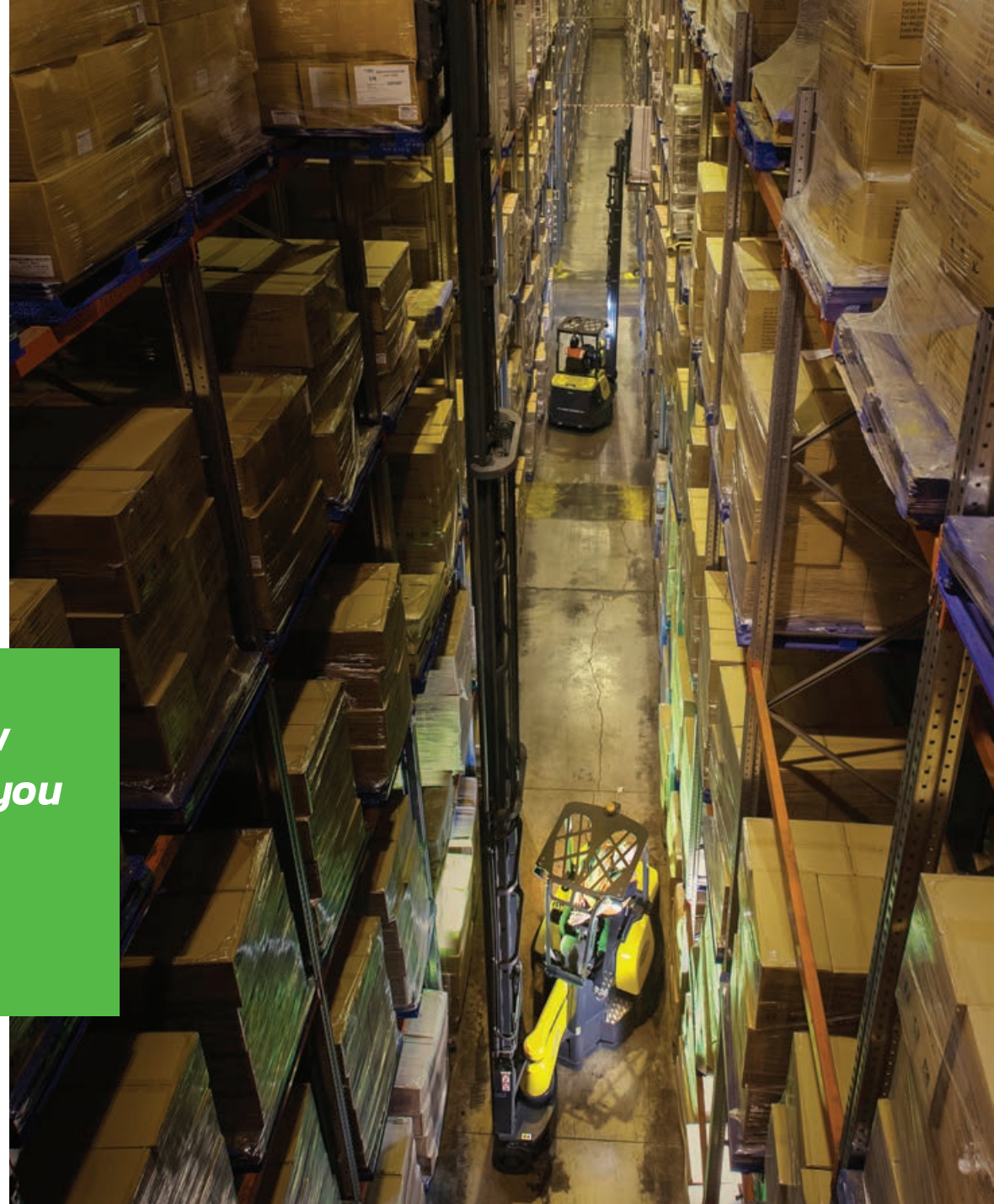


# ***FREE Warehouse Planning***

With over 25 year's experience in volume optimisation our team of warehouse planning experts know how to make your space work harder for you.

This service, when combined with our material handling products, can deliver up to **100%** additional storage capacity.

***We don't talk about how  
our solutions can save you  
space and money  
– We Show You How!***



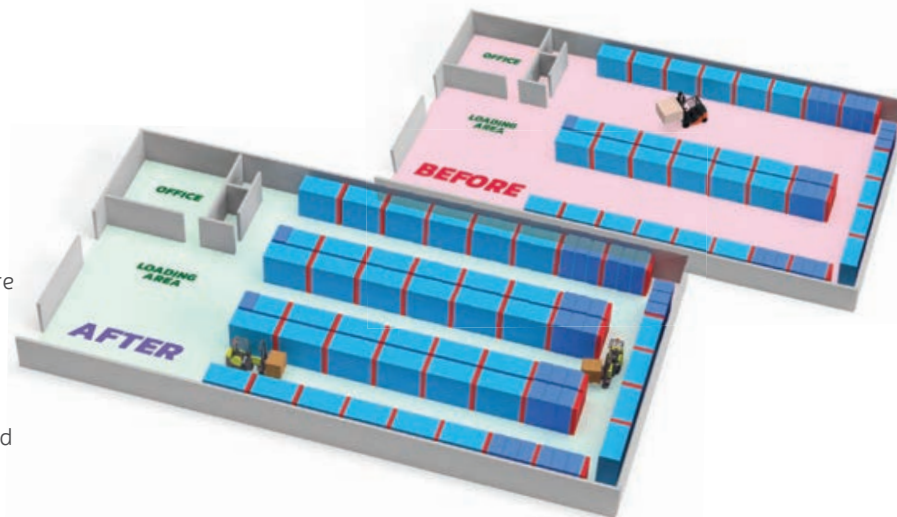




## Combilift Warehouse Consultancy

By combining our warehouse consultancy and our wide range of solutions, space savings of up to 50% are achievable

Using your floor plans we can create compelling visual data to demonstrate how to increase efficiency, maximise storage and improve safety without the need to buy more warehouse or yard space.



## Free Service

*This service is free and without obligation, so contact Combilift and let us show you how to get the most from your storage space.*



## The Combilift Advantage

The Combilift ethos is to help customers unlock every inch of their storage space without the need to expand the size of their facility. Understanding the available space and how it is being used is critical to running a more sustainable and profitable business.

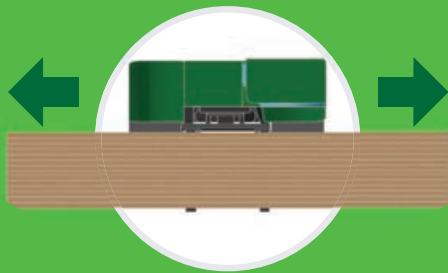
Combilift specialises in making the handling of long and awkward loads more productive, safer and faster. The ability to travel in the direction of the length of the load, combined with multidirectional operation, means that even the longest of loads can be easily and safely moved around your site.

## Work Seamlessly Indoors & Out

Combilift products have the ability to operate both indoors and out, in the harshest of conditions, removing the need for double handling.



### Safely Handle Long Loads



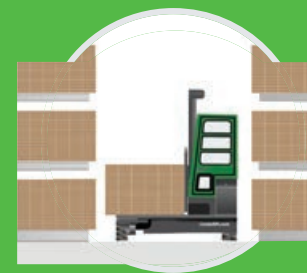
### MultiDirectional



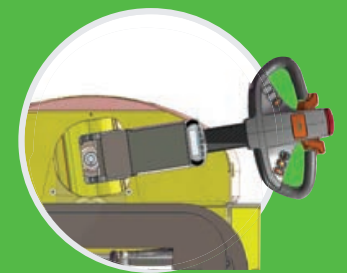
### Move up to 120 Tonne



### Narrow Aisle Performance



### Innovative Safety Features





# Long Load Handling Specialists

Combilift specialises in making the handling of long and awkward loads more productive, safer and faster.

Multidirectional operation, integrated load carrying platform and excellent visibility are just some of the hallmark features that make Combilift solutions the most effective method for transporting long loads.



*Unlock every inch of your storage space with Combilift*



# C-SERIES

## The Original Multidirectional Forklift

The COMBi C-series range of forklift trucks is designed to deliver the most productive, safe and reliable way to handle your long and specialised loads.

Designed to improve your workflow by effectively becoming three forklifts in one, a sideloader, counterbalance and narrow aisle forklift. This revolutionary design eliminates costly double handling of material and improves productivity.

Multidirectional operation gives this forklift the versatility to transport long loads through narrow doorways and around objects with confidence and utmost safety.



### Capacity

2,500 kg – 14,000 kg

### Lift Height

Up to 12 m

### Engine Type

Electric, Diesel, LPG

### Aisle Width

As small as 2200 mm



*Whatever your  
load is, there  
is a C-series  
to handle it.*



## The Safest Way to Move Your Products



### Safety is at the core of the design

Safety is at the core of the design of the COMBi C-series. A low centre of gravity and integrated platform provide a very stable base for resting long loads on while transporting.

By having the cab mounted to the side of the mast, the operator has a clear view, increasing safety and reducing the risk of product damage



### Maximise Your Space

The C-series also has the ability to operate as a narrow aisle forklift and can be used as a guided aisle forklift allowing the storage density to be increased, maximising storage space.



### Tough, reliable and built to last

The C-series is designed to ensure the highest levels of efficiency. We take pride in the fact that we offer the widest range of customisation from engine technology to lifting attachments to cab specification.

This is a 25,000 kg unit in operation.

# COMBi-CB

## *The Most Compact Counterbalance Forklift on the Market*

The innovative COMBi-CB is the original compact multidirectional counterbalance forklift truck. Its manoeuvrability means it is perfect for transporting goods such as palletised loads, both indoors and out.

### **Capacity**

2,500 kg – 4,000 kg

### **Engine Type**

Electric, Diesel, LPG

### **Lift Height**

Up to 7.5m



*Counterbalance operation combined with the ability to carry long loads, such as timber or steel beams, in sideways mode makes the COMBi-CB the most versatile all-round forklift available.*





## Maximum Productivity

Its low profile and compact design enable the COMBi-CB to offload HGVs and bring goods to racking or to feed production lines.

The COMBi-CB is also small enough to enter containers for loading or unloading.



## Maximum Safety

Driver visibility is maximised by its off centre and high seating position which is fully protected from falling material by the sturdy overhead guard.

Controls are intuitive and ergonomically positioned for driver comfort. The seat has full suspension and is fully adjustable.





Introducing the

# COMBi-CB 70E

A new addition to Combilift's ever growing range of electric models, that offer powerful performance, extensive battery life and unrivalled ergonomics. The Combi-CB70E is the most compact 7t capacity counterbalance truck on the market whilst also benefitting from multidirectional ability, enabling the versatile space saving handling of both and bulky loads.

**NEW**



*Amazing performance, extensive battery life, unrivalled ergonomics and the advantages of the CB range combine to make the CB70E the most powerful, compact multidirectional forklift yet.*



## *Award Winning Traction*

The Combi-CB70E comes with its patented Independent Front & Rear Traction negating the need for differential lock on slippery surfaces and significantly reduces long load momentum twisting when travelling sideways.





Introducing the

# COMBi CUBE

**NEW**

The COMBI-CUBE is a new electric model that incorporates a host of technological and design features that not only enhance handling procedures but also offer a high level of driver comfort. Fitted with Dynamic 360 Steering that enables seamless directional change, makes this model the most manoeuvrable counterbalance forklift on the market.



## *Vibrant, Visible, Safe*

Immediately noticeable is the new vibrant colour – this bold fresh Combi-green shade will contribute to improved safety as the trucks will be easily visible in their operational environment. Aside from optics however, a focus is on a number of ergonomic features.

*With a wealth of innovative new features such as intelligent seat rotation and our proprietary Dynamic 360® Steering System, the Cube is the next generation counterbalance forklift.*



## *Intelligent Seat Rotation*

The CUBE's patent pending swivel seat automatically swivels 15° to the left or right with the selected direction of travel, maximising driver visibility and reducing strain when travelling in reverse.



# COMBi-SL

## The Most Versatile Sideloader

The COMBi-SL range are sideloaders with the manoeuvrability and versatility of a multidirectional forklift.

They benefit over traditional sideloaders in that they are extremely manoeuvrable, can work in narrow aisles and are able to block or bulk stack for better space utilisation.

### Capacity

Up to 7000 kg

### Platform Length

1200 mm - 1400 mm

### Lift Height

Up to 7000 mm

### Engine Type

Diesel



## The Perfect Forklift Tailored for Your Needs

Features such as the rubber mounted cab, all-wheel hydrostatic drive, load sensing steering, plus of course a choice of customised options such as reverse cab position or front access cab enable you to tailor your Combi-SL to exact requirements.

## Reliable in the Toughest Conditions

The COMBi-SL features the highest quality components and innovative technology to offer powerful performance and dependable operation in even the most demanding applications.





# COMBi-4WSL

## The 4-Wheel Sideloader for the Long Haul

Available with 5t and 6t load capacities, the COMBi-4WSL was developed for operations that require reliable, robust and fast operation when moving product across extensive sites and offers considerable benefits over other machines on the market.

Drivers can be assured of a comfortable ride throughout their shift thanks to the spacious cab with deep suspension seat and an adjustable steering column. Options such as reverse cab position or front access cab further add to the high level of ergonomics. The ultra-clean Deutz engine without DPF reduces maintenance costs, reduces fuel consumption and ensures cleaner emissions

### Capacity

4000 kg - 6000 kg

### Lift Height

Up to 7000 mm

### Platform Length

1200 mm - 1400 mm

### Engine Type

Diesel / Lpg/Electric



*For operations that require robust and fast operation when moving product across extensive sites, the four-wheeled COMBi-4WSL is ideal.*







***The New Traction System fitted on the Combi-FSE is the most advanced steering system on any four wheeled Forklift on the market.***

## **COMBI-FSE**

The FSE has been modelled from the successful Sideloader range with its comfortable cab, air suspension seat and generous roof to floor windscreen, but with the added benefit of the rear – under deck, battery placement, which guarantees the best operator visibility of any comparable truck, as well as Zero emissions and reduced operational noise

**Capacity:**

5000kg - 6000kg

**Lift Height**

Up to 7000 mm

**Platform Length:**

1200 mm

**Power Type:**

Electric



***Maintenance Made Easy***

Maintenance time has been kept to a minimum due to key service features such as its quick interchangeable battery for long shift work, centralised grease points on the front and rear of the load platform and removable panels for easy access to the motor. Regenerative braking which can recapture much of the truck's kinetic energy during deceleration or changes in direction.





# COMBi-ST/GT

## Forklifts That Handles the Narrowest of Aisles

For operators working in confined spaces, excellent visibility and speedy picking is essential. Guided aisle operation and a cab designed for efficiency make the COMBi-ST and COMBi-GT stand-on ranges the obvious choices when space is at an absolute premium, such as in stockholding facilities for steel, metal, tubes and uPVC extrusions.

### Forklifts For Extremely Narrow Aisles

The narrow cab design enables operation in extremely narrow aisles. Combilift stand-on sideloaders can manoeuvre long loads indoors and out. The Combi-GT two-way sideloader can work in aisle-widths of just 1.25m

Guided aisle operation is taken up by many customers, making it very quick to enter and steer down aisles whilst greatly reducing the risk of damage to both product and racking.

**Capacity:**  
5,000 kg

**Platform Length:**  
1200 mm

**Engine Type:**  
LPG & Electric





# COMBi-MR

## The Most Agile Combilift

Combilift's multidirectional stand-on reach truck offers superb manoeuvrability and safety in the tightest working conditions.

This compact truck has the ability to drive across various surfaces and features a cab that provides excellent ease of access, aiding quick and efficient picking by the driver.

### Capacity:

2,500 – 4,500 kg

### Steering

Dynamic 360°™

### Platform Height

As low as 380mm

### Engine Type:

Electric



*Smoothly change direction, speed and hydraulic functions using the multifunction joystick for faster manufacturing and logistics procedures*



## SAFETY

The new Combi-MR4 definitely delivers the goods from an ergonomic point of view: a high visibility operator cabin, multi-function control joystick,

AC-electric power steering and joystick operated hydraulic mast functions all make for a smooth ride and straightforward operation. The articulated rear axle with two rear rubber drive wheels provides optimum traction for outdoor use, while still ensuring nimble and accurate truck placement.



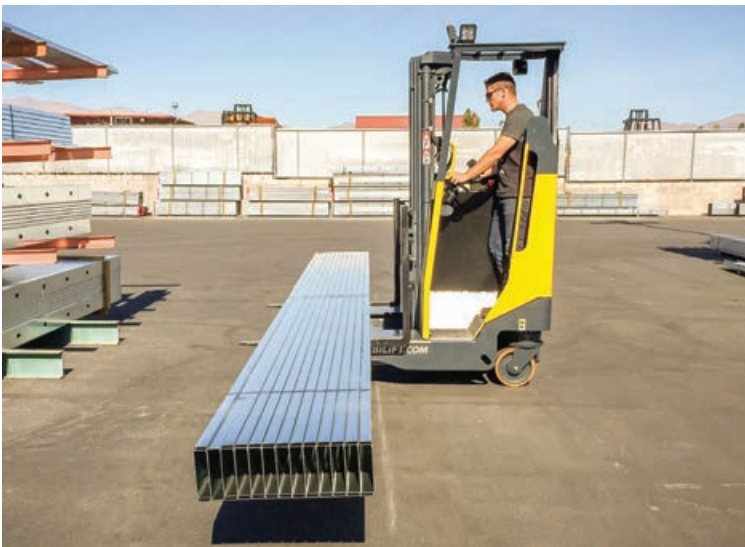


## DYNAMIC 360°™ STEERING

Combilift's new dynamic 360°™ steering. This intuitive steering provides unique rotation on each wheel, enabling seamless directional change of the truck while on the move. This enables the Combi-MR4 to work in forward, sideward and crab steer mode guaranteeing swift operation and unrivalled manoeuvrability.

# Dynamic 360°®

*Intelligent rotation on each wheel, enabling seamless directional change of the truck while on the move*



# Combilift Pedestrian Range

## Innovation in Safety with Our Patented Multi-Position Tiller Arm

To provide optimum safety for the operator and those around them, Combilift has developed the multi position tiller arm.

The tiller arm enables push-button rotation of the rear wheel, allowing the operator to stand at the side of the truck, the safest position when placing and picking in narrow aisles. This improves visibility and greatly reduces the risk of incidents in tight confines.

**COMBI-WR4**  
page 27

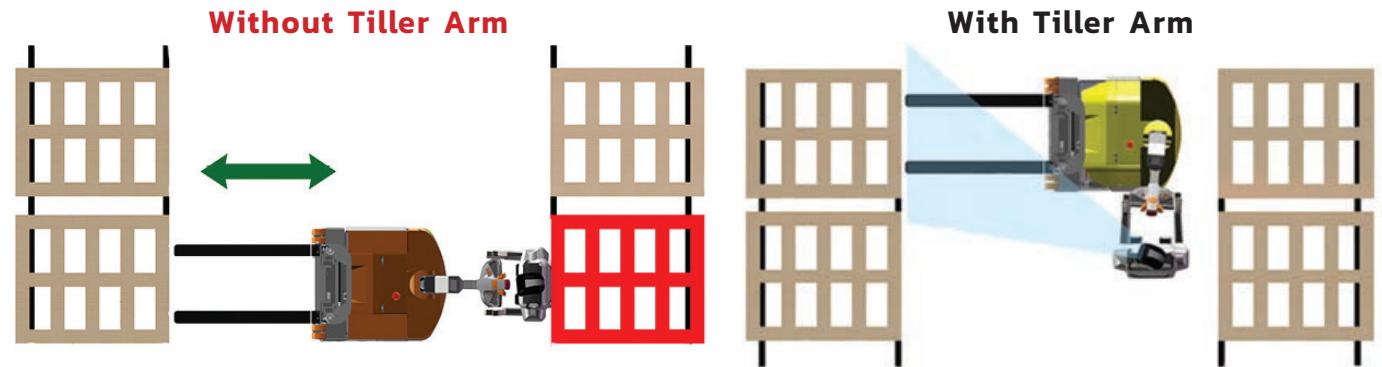
**COMBi-WR**  
Page 34

**COMBI-CS**  
page 35

**COMBI-PPT**  
page 36



**Multi-Position Tiller Arm can be turned to the left or right, allowing the operator to stand to either side, providing full visibility of the load and forks while maintaining full steering control**



The tiller can be turned to the left or right, allowing the operator to remain at the side, while maintaining full steering control. Standing to the side of the stacker eliminates the risk of being trapped or crushed, while allowing the COMBi-WR4 to operate in very narrow aisles.



# COMBi-WR4

*The Original 4-way Pedestrian Stacker for Long Loads & Narrow Aisles*

For the handling of lighter loads, many operations increasingly favour the use of pedestrian trucks or walkie reach stackers which offer a number of advantages over ride-on forklifts, particularly when it comes to the safety of personnel in busy production areas. Combilift responded to customer feedback by developing the COMBi-WR4 pedestrian reach stacker.

The COMBi-WR4's ability to handle long loads in sideways mode combined with its multi position tiller arm and pantograph reach forks means it can operate in very narrow aisles, as narrow as 2.1 m



**Capacity**  
1000 kg - 3000 kg

**Engine Type**  
Electric

**Lift Height**  
Up to 6.6 m



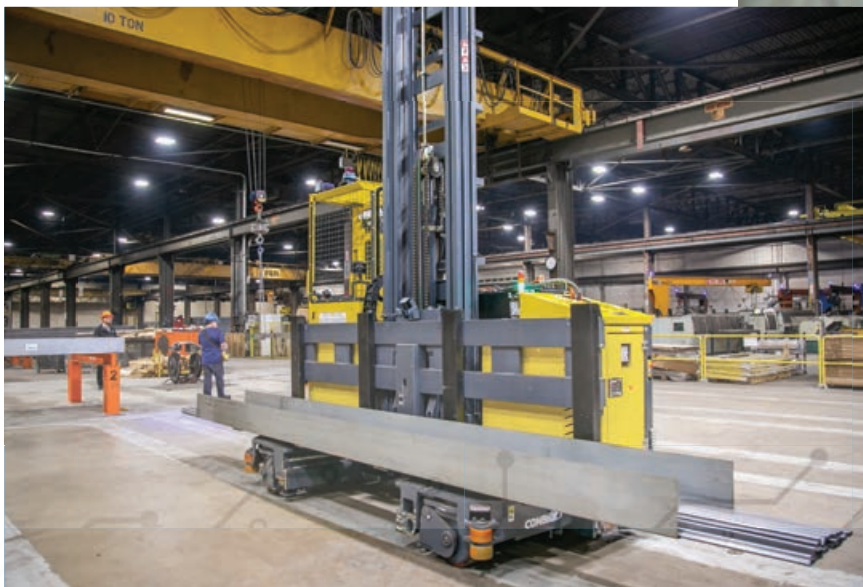
*The first 4-way pedestrian reach stacker with multidirectional travel, innovative safety features & effortless operation*





# ***Combilift Autonomous Guided Vehicles***

Combilift have developed their autonomous guided system that can be combined with our proven range of multidirectional forklift trucks to provide safe and efficient transport of long loads. We can create an automated guided vehicle (AGV) solution tuned for the specific requirements for your production and working environments.





Introducing the

# COMBi-AGT

*The first autonomous guided forklift truck with optional manual operation*

Safely and reliably deliver long loads in narrow aisle around the clock with the new **Combi-AGT Autonomous Guided Forklift Truck**.

Our autonomous truck solutions combine sophisticated, innovative technology with our 25 years of warehouse optimisation experience to provide the highest levels of productivity and safety available. The Combi-AGT can operate autonomously in guided aisles and free-roaming and also with manual driving option.

**Capacity:**  
5,000 kg

**Engine Type:**  
Electric

*Lower operating costs and optimise workflow processes with reliable & predictable performance.*

*Improves workplace safety*

The Combi-AGT reduces risk of workplace incidents by safely working alongside people, existing infrastructure and other vehicles due to its advanced safety sensors and autonomous driving capabilities.

**NEW**





# ***Combilift Warehouse Solutions***

In what is a very competitive warehousing sector, getting the most from your space is crucial. With Combilift's range of warehousing solutions, you can dramatically increase the productivity of your warehouse while reducing costs.

By using our free warehouse consultancy service and wide range of innovative products designed to maximise your storage, improve safety and increase efficiency, you could increase your warehouse capacity by up to 50%.

***Maximise your warehouse capacity, increase your productivity and reduce product damage while operating in narrow aisles.***





# AISLE MASTER

## *The Articulated Forklift That Does It All*

Designed to be an all-in-one warehousing forklift, the Aisle Master offers more efficient offloading, handling and storage.

Aisle Master trucks are tough, versatile and built to last. Designed to withstand heavy-duty use inside and out, each robust VNA articulated forklift truck is manufactured to the highest standards.

### **Capacity:**

1,500 kg - 3,000 kg

### **Lift Height**

Up to 15 M

### **Engine Type**

Electric- LPG

### **Aisle Width**

As narrow as 1.6 M



## *A Versatile Forklift that Operates Seamlessly Inside & Out*

Save time and money with the one truck, transporting loads from trailer to racking in a single operation. Thanks to the large rubber tyres, operators can make light work of loading and off loading in semi-rough yards while enjoying a smooth ride regardless of the terrain.

This versatility combined with extreme reliability makes the Aisle Master the perfect solution for the DIY & building supply industry.







## *Superior Ergonomics*

The AisleMaster is packed with a host of ergonomic features. Enhanced cabin ergonomics, superb visibility, excellent stability and optimum driver safety all add to driver confidence, which in turn increases productivity.



## *Smaller Aisles Mean More Racking*

Combilift has the power to transform the way our customers look at storage. Powerful, precision lifting technology means Combilift can exploit every inch of vertical space while its ability to manoeuvre through narrow aisles and doorways means our customers can dramatically increase the amount of racking in their warehouses.



Up to  
**50%**  
More Storage with  
*Aisle Master*

Using AisleMaster you can optimise your racking layout and reduce aisle widths down to as little as 1.6 m, to dramatically increase your storage capacity by up to 50%



# Aisle Master Cold Store

## *Warm and Productive in a Cold Climate*

The cost of cold store and temperature controlled warehousing operations is much higher, making space saving more crucial than ever. Aisle Master's cold store model can handle the harsh climate of cold store facilities while providing all the benefits of increased storage and productivity.

The fully enclosed, high visibility cab keeps drivers warm, reducing the time needed for breaks and increasing productivity. To improve driver visibility while performing truck to rack operations, heated cab windows eliminate the build-up of condensation when driving between different temperatures.



## *Aisle Master Order Picker*

The Aisle Master-OP (AME-OP) is a stand-on electric powered model that combines the advantages of a narrow aisle articulated forklift and an order picker for versatile operation in warehousing applications.

### *Order Picking Made Easy*

Influenced by customer feedback recent soaring growth of e-commerce, the Aisle Master articulated forklift range is designed for warehouses and allows ease of movement through very narrow aisles for both order picking and replenishing.

The AME-OP truck has all the key advantages of the conventional Aisle Master – indoor/outdoor, for loading/offloading and for stock replenishment.

The AME-OP features a patented chain steering system, which allows the truck to articulate more than 205°, and an inline drive motor and front drive axle, all of which enable narrower aisle operation.



# COMBi-WR

## *The Pedestrian Stacker for Very Narrow Aisles*

The COMBi-WR is the first purpose built pedestrian reach stacker with the ability to operate in a VNA aisle of just 2.1m and with a lift capacity of 2000kg. Its excellent ergonomics make it easy and stress free to operate.

The patented multi-position tiller enables push button rotation of the rear wheel parallel to the chassis and back, improving forward visibility and greatly reducing the risk of incidents in tight confines. The lift height can be tailored to your application up to 6.6 m and the ergonomic control arm provides 2 speed operation for enhanced safety.

*The first purpose built pedestrian reach stacker with to operate in a VNA aisle of just 2.1 m and with a lift capacity of 2000 kg.*

**Capacity**  
1,000 kg – 2,000 kg

**Lift Height**  
Up to 6.6 m

**Engine Type**  
Electric

**Machinery Type**  
Pedestrian Stacker





# COMBi-CS

## Counterbalance Pedestrian Stacker Packed with Innovation

As with all our pedestrian range, Combilift's first pedestrian counterbalance reach forklift truck is equipped with our patented multi-position tiller arm.

This provides maximum operator visibility, increases safety and means the COMBi-CS can operate in the narrowest of aisles.

### Capacity

1000 kg - 4,000 kg

### Engine Type

Electric

### Lift Height

Up to 6 M



*This pedestrian reach stacker can operate in the narrowest aisles of any truck of its type in the market.*



# COMBi-PPT

## High Capacity Powered Pallet Truck that's up to the Job

Powerful, economical and innovative in design, Combilift's Powered Pallet Truck is a highly versatile option, suitable for small to medium-sized warehouses and production facilities. All-wheel drive allows the Combi-PPT to glide effortlessly around the warehouse, negotiating obstacles with ease.

The COMBi-PPT is equipped with our patented multi-position tiller arm providing safer operation, maximum operator visibility and narrow aisle performance.

**Capacity**  
up to 16,000 kg

**Machinery Type**  
Pedestrian Stacker

**Engine Type**  
Electric



*Unrivalled energy efficiency means you get maximum output from every charge, while quick-change technology enables you to quickly insert a fresh battery and carry on working effectively.*





# COMBi-OP

## The Perfect Picking Platform

The COMBi-OP is a safe and robust work platform for efficient processing of multiple orders and long loads. It is the perfect platform for picking long items in very narrow aisles. Carry hooks on the side of the platform mean you can store long items as you work. To enhance safety and improve productivity, the COMBi-OP is designed for guided aisle operation.

### Capacity

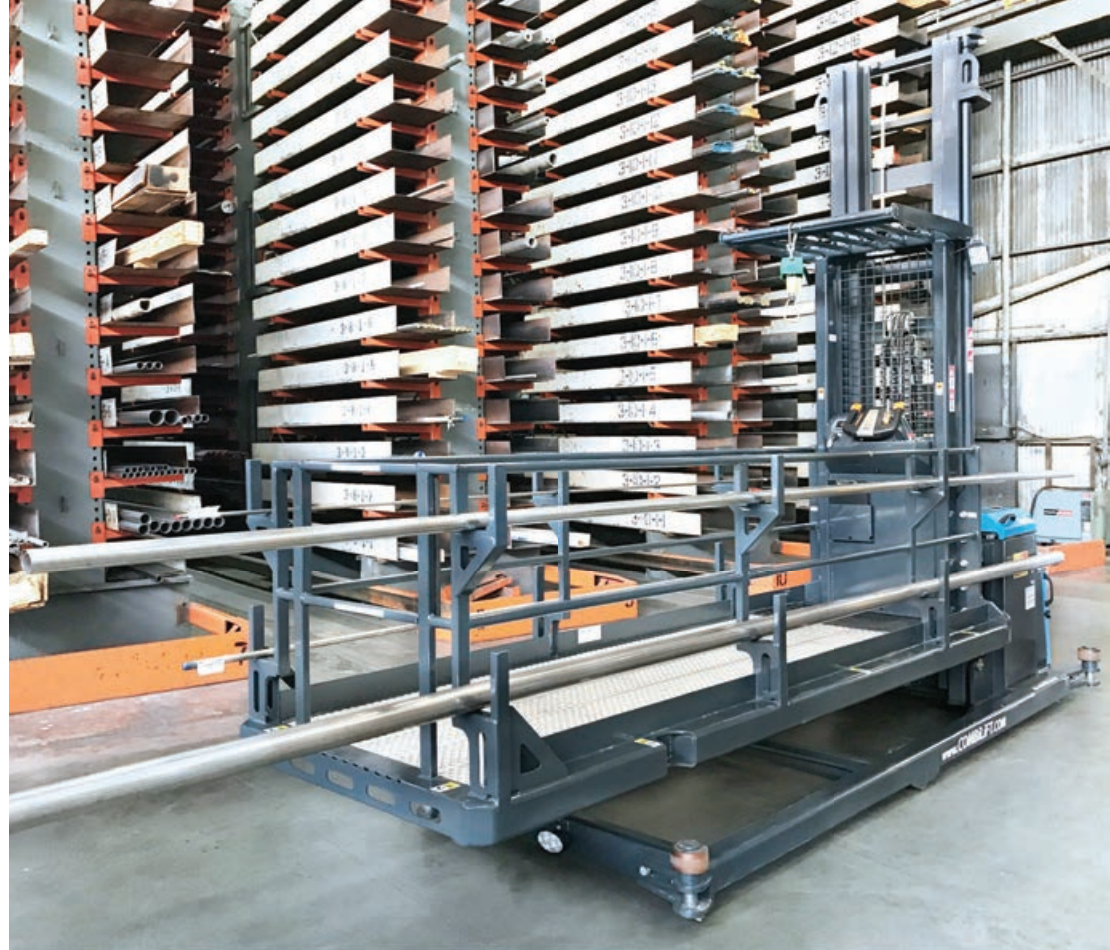
500 kg

### Engine Type

Electric

### Lift Height

Up to 7000 mm



*Safe & robust work platform for efficient processing of multiple orders and long loads in narrow aisles.*







# ***Containers & Oversized Loads***

Combilift's range of straddle carriers and mobile gantries provide safe, efficient solutions for even the most extreme load handling situations.

Distribution, shipping, aerospace, steel fabricators, wind & green energy and precast concrete – there's no load too large or heavy for these workhorses.



***Our range of straddle carriers and mobile gantries provide safe, efficient solutions for even the most extreme load handling situations***





# COMBi-SC

The COMBi-SC is the perfect container handling solution for those who require fast turnaround times and complete flexibility.

The COMBi-SC's ability to double stack containers and travel through low doorways gives you the ability to lift, set down and transport containers throughout your site. With 360° visibility and 2 min offloading from trailer to ground, the Combi-SC provides faster loading times and eliminates the need for trailers to have to wait to be loaded.

*The Cost Effective  
Solution for  
Handling Containers  
& Oversized Loads*







### *Tough & Reliable*

Unmatched reliability, fuel efficiency and much lighter service weight ensure maximum productivity. Straightforward design with easy to source, standard components offer extreme reliability and maintenance wherever you are in the world.



### *Oversized Loads*

Often, the material handling challenges you face can be specific to your operation. Combilift's approach is to develop a tailor-made solution for your extreme and oversized loads.

The COMBi-SC's robust build, its super elastic tyres, a lack of over sensitive electronic components and the ability to work on semi-rough terrain make it the ideal workhorse for any tough environment.



### *Benefits*

- Cost Effective
- High Performance
- Low Service Costs
- Safe Ground Level Stuffing
- Efficient Dock Loading
- Flexible Container Handling with Top Lift
- Suitable for Rough Terrain
- Remote Control Option



# COMBi-MG

The COMBi-MG Mobile Gantry is the perfect solution for handling and conveying extremely large loads typical of industries such as shipping, aerospace, wind energy, large scale civil engineering industry, precast concrete and large scale structural steel industries.

Highly customisable to fit any load handling challenge, the COMBi-MG is highly adaptable to your needs. It can be built to dimensions specifically to suit your application. It can be fitted with a very wide range of lifting accessories to suit any application or industry.

## Capacity

20,000kg - 100,000kg

## Lift Height

Fully Customisable

## Engine Type

Diesel/lpg

Width

Fully Customisable



*The perfect solution for handling and conveying extremely large loads*





# COMBi-CSS

## Load A Full Container in Under 6 Minutes

Safe, fast and easy to operate, Combilift's new COMBi-CSS is a cost-effective container loading solution that can load a 40-foot container in as little as 6 minutes.

It is a much less labour intensive system. All loading is done outside the container, reducing risk to personnel and minimising product damage. Loads weighing up to 30,000kg can be safely and quickly formed on the platform outside the container and placed into the container, by one forklift and a single operator.

ROI will be achieved in a very short time and for this reason the Combi-CSS is the obvious choice for container loading.

### Capacity

30,000kg

### Container Size

20'/30'/40'

### Engine Type

3 Phase Electric



*A cost-effective container loading solution that can load/unload a 40' container in as little as 6 minutes.*







Introducing

# COMBI-SBT

*Shuttle vehicle for transporting pre-staged concrete*

The CombiLift Swap Body Transporter (Combi-SBT) is a diesel-powered shuttle vehicle with a capacity of 50t designed for transporting pre-staged concrete loads on swap bodies around the yard and from the manufacturing facility to storage.

**Capacity**

50,000kg

**Engine Type**

Diesel, LPG

**Lift Stroke**

370mm independent front & rear lift

**Machinery Type**

Swap body shuttle

*Excellent visibility due to a 90° off-centre cab position offers unrivalled speed of operation for quicker turnaround of loads.*





Introducing the

# COMBi-LC BLADE

## Remote controlled Tandem Blade Mover & Load Carrier

Diesel-powered, remote control operated machine designed for tandem operation for moving wind turbine blades & long loads around yards, and from production facilities to storage areas, enabling loads of 75t to be transported.

**Capacity**  
up to 75,000kg

**Engine Type**  
Diesel

**NEW**



*Extremely manoeuvrable  
with remote control  
steering the Combi-LC is  
perfect for moving wind  
turbine blades*





# COMBi CONNECT

## Fleet Management Telematics

Combilift have developed a proprietary telematics system that helps create a unified fleet management system to monitor Combilift trucks using (GPS) technology, sensors and vehicle engine data.

Combilift Telematics is an innovative, fully transparent solution where both the platform & data are available to end customers. It empowers your business to achieve unprecedented efficiency, safety, and productivity. Revolutionise how you operate and manage your fleet with our innovative system, designed to cater to specific customer needs and empower you to transform analytical data into operational advantage.

***With Combi-connect fleet management, small and effective changes can bring big results, big savings, and a more effective fleet that better serves your customers.***

Experience the future of forklift fleet management, powered by cutting-edge data science, this innovative solution seamlessly integrates data from your Combi forklifts, transforming it into actionable insights through advanced analytics.

By harnessing the power of data integration, you'll unlock a new level of operational efficiency, predictive maintenance, and informed decision-making that will transform the way you manage your fleet.





# COMBi-LR

The Combi-LR is based on the highly successful and reliable C-Series multidirectional forklifts. The offset driving position provides the ideal view of the cage while a very small turning radius makes for excellent manoeuvrability.

Three wheel agility plus tractor grip tyres and all-wheel traction with differential lock deliver impressive performance working indoors and out, even on rough terrain. A small turning circle makes it easy to work inside sheds or enclosed yards and fully hydrostatic drive delivers power and precision as and when you need it.

## Capacity

Up to 2,500kg

## Engine Type

Diesel

*Based on the highly successful C-Series multidirectional forklifts, the Combi-LR is the perfect live receiving forklift*





# COMBi-RT

Designed specifically to meet the harsh demands of the poultry industry, its impressive handling and robust construction make it a valuable workhorse for any agricultural business.

Large tires on a three-wheel chassis with all-wheel traction and differential lock give the COMBi-RT a compact turning circle and excellent grip on rough terrain, while a generous 300 mm ground clearance ensures minimal disturbance of litter.

Ultra-smooth controls permit quieter, more refined handling for optimal livestock welfare. For the driver, an offset driving position affords excellent visibility while a deep suspension seat and fully enclosed cab options provide all-day comfort in any weather.

## Capacity

Up to 3,000kg

## Engine Type

Diesel



*Ultra-smooth controls impressive handling and robust construction, make the Combi-RT a valuable agricultural workhorse*





# COMBILIFT 25

LIFTING INNOVATION *Years*

Monaghan, Ireland  
+353 47 80500  
combilift.com

    Search #Combilift

