

SB-200EE



ERIEZ®

Grate Magnets

Our full line, from tubes to fully automated tramp metal removal designs

TUBE MAGNETS • P-GRATE • BA GRATE • WING/DRAWER GRATES • GRATES-IN-HOUSING • ROTA-GRATE®



Selecting the proper magnetic separator requires many considerations including flow rates, material density and targeted purity level. Whether your product is dry or moist, fine or clumpy, hard to reach or continuously operating, Eriez offers a magnetic separator for your application.

Table of Contents

*Magnet Strength Options
& Applications*

pages..... 4-5

Tube Magnets

page..... 6



Standard Grates

pages..... 7-10

P-Grate

BA-Grate

Wing/Drawer Grates



Grate-In-Housing

pages.... 11-19

Round Grate-In-Housing

Aftermarket PM (Rare Earth) Drawer Magnet

PM Grate-In-Housing

Standard Grate-In-Housing

Easy-to-Clean Grate-In-Housing

Easy-to-Clean DSC Grate-In-Housing

Easy-to-Clean DSC Automated Grate-In-Housing

Easy-to-Clean Automated Grate-In-Housing

Self-Cleaning Grate-In-Housing



Rota-Grate®

pages.... 20-23

Rota-Grate

Rota-Grate In-Housing

Rota-Grate In-Housing - Removable Tube Assembly

Self-Cleaning Rota-Grate



Look for the ProGrade logo!

Eriez' ProGrade® Magnetic Separators are competitively priced, fast moving standard items available in a range of models, sizes and strengths. This brochure references the magnetic grates available in the ProGrade line.

MAGNET STRENGTH OPTIONS

Ceramic

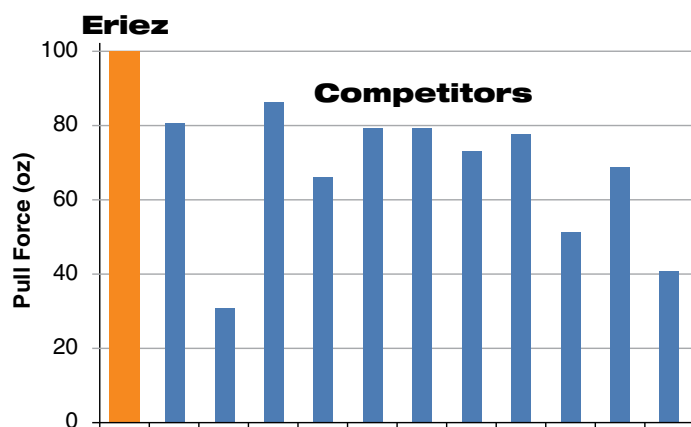
Basic protection from tramp metals damaging downstream equipment. Ceramic magnets and quality construction at low prices.

Rare Earth

Prevents product contamination and tramp metal damage. High-strength rare earth separators are extensively used by food, chemical and pharmaceutical processors requiring high levels of product purity.

Xtreme™ RE7 Rare Earth

The ultimate in process purity combines the finest materials and construction techniques with the industry's most powerful rare earth magnetic circuits.



PULL TEST KIT

Eriez offers two different Pull Test Kit options which are identical except for the scale provided: a kit with a mechanical scale and a kit with a digital scale. The digital scale is recommended for industries that require calibrated scale certification for auditor purposes.



Standard Mechanical Scale



Digital Calibrated Scale

Applications



PRODUCTION OF COCOA

Fine iron contaminant clings to each tube in this magnetic Rota-Grate®, which has just been opened for inspection and cleaning.



GRAIN MILL

A gravity flow Grate-In-Housing magnetic separator removes tramp iron contaminants from material flow.



FROZEN FOODS

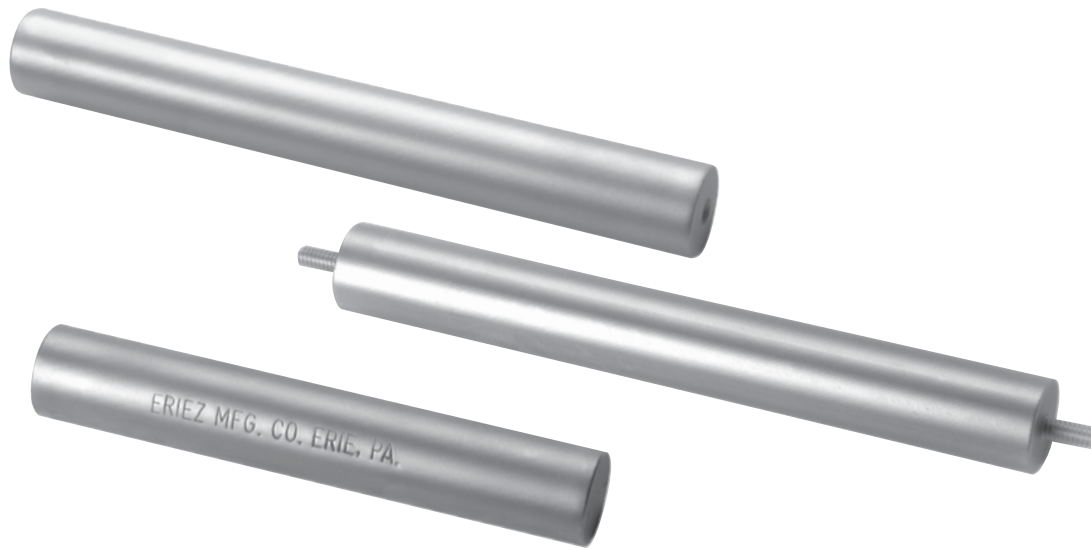
Better Baked Foods, maker of frozen pizza, installed a high power, rare earth Eriez' P-Grate magnet to ensure no metal contaminants passed through their diced toppings pneumatic conveyor line.



RAIL LOADING

Primary ferrous removal from grain being unloaded off railcars.

Tube Magnets



Individual magnetic tubes can be used to remove ferrous contaminants from liquids in tanks, as a quality control check of dry bulk materials and in many other ways where a powerful, portable magnetic power source is needed. All magnetic tubes are available with 1/4-20 UNC drilled and tapped end plugs.

AVAILABLE IN:

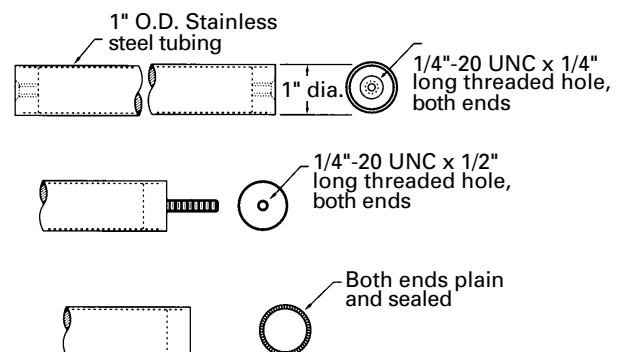
- Ceramic
- Rare Earth
- Xtreme Rare Earth

FEATURES:

- Continuously welded
- 316L stainless steel
- Glass bead surface finish
- Rare Earth and Xtreme Rare Earth Magnet Circuits for temperatures up to 150°F
- Custom lengths available

Length		Ceramic	Rare Earth	RE7 Xtreme Rare Earth
in	mm	Part No. (Weight lbs)	Part No. (Weight lbs)	Part No.
4	102	135708P (0.7)	126734P (0.8)	150571
6	152	133640P (1.0)	132640P (1.2)	150561
8	203	133642P (1.3)	126725P (1.7)	150572
10	254	133644P (1.7)	126728P (2.2)	150573
12	305	133646P (2.0)	126727P (2.6)	150563
14	356	133648P (2.3)	133567P (3.0)	150574
16	406	134057P (2.6)	130919P (3.4)	150575
18	457	134059P (2.9)	130920P (3.9)	150565
20	508	135709P (3.2)	140820P (4.3)	150576
22	559	135710P (3.5)	135684P (4.7)	150577
24	610	140764P (3.8)	126748P (5.1)	150578

DIMENSIONS:



See the details in the
Quick Ship Catalog

Grate Magnets



SQUARE & RECTANGULAR

Square and rectangular Grate Magnets remove ferrous contamination in hoppers, chutes, floor openings and other areas where free flowing materials are present. These grate magnets are also constructed to fit square and odd-shaped hoppers. The all-stainless steel unit is installed by simply placing the grate in the hopper with the ends of the magnetic tubes or tie bars resting against the sides.

AVAILABLE IN:

- Ceramic
- Rare Earth
- Xtreme Rare Earth

FEATURES:

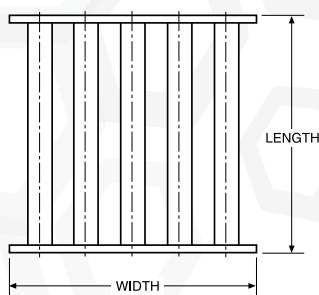
- All stainless steel construction
- 1-inch dia. tubes on 2-inch centers
- Glass bead surface finish
- Sanitary construction (Xtreme only)
- 150°F Max Temp (Rare Earth and Xtreme Rare Earth)
- Custom sizes and designs available



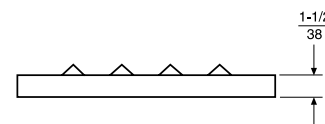
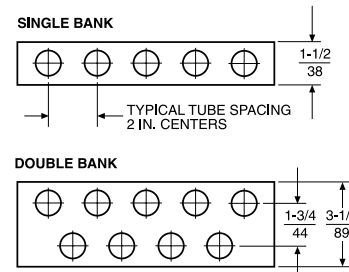
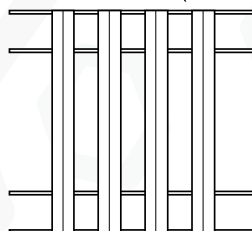
ROUND

Round Grate Magnets remove ferrous contamination in hoppers, chutes, floor openings and other areas where free flowing materials are present. These round grate magnets are constructed to fit round processing lines or hoppers.

DIMENSIONS:



REMOVABLE DEFLECTOR (OPTIONAL)



See the details in the
Quick Ship Catalog



Typical units include a 15 inch diameter grate within a steel housing. Optional features include deflectors to prevent product from flushing through the grate assembly, sanitary finishes for food or pharmaceutical applications, multiple magnet row assemblies depending upon specific separation efficiency requirements, handles and other customer specified installation attachments.

- Ceramic
- Rare Earth
- Xtreme Rare Earth

- A portable separator used on barrels and bulk container
- Standard construction includes stainless steel tubes with mild steel frame, flange and handles
- Handles mounted to the collar enable transfer of the separator from one barrel to another.
- 1/4-20 tapped end plugs
- Fit in or on standard barrels 15-1/2, 17 or 20-inches (394, 432 or 508mm) in diameter
- Can incorporate from one to four banks of 1" diameter magnetic tubes

- TBA - For tramp iron removal (large pieces of iron), with magnetic tubes on 2" (51mm) centers
- FBA - Best separation of fine iron contaminants, with tubes on 1-1/2" (38mm) centers

COLLAR FLANGE

22
559

O.D. HOUSING RING 15
381

3/4
19

2-1/2
64

1/4
6

1/4
6

WALL

.078
2

STANDARD FLANGE MOUNTING (INSERT INTO BARREL)

1/4
6

OFFSET

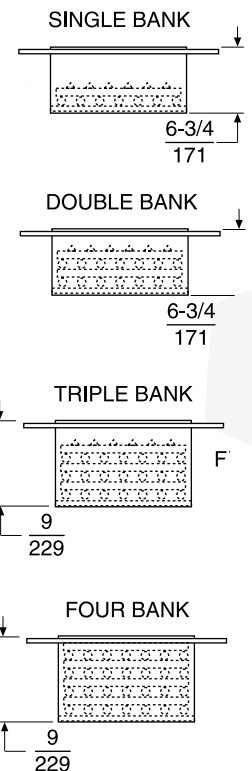
ALTERNATE FLANGE MOUNTING (SIT ON TOP OF BARREL)

1/4
6

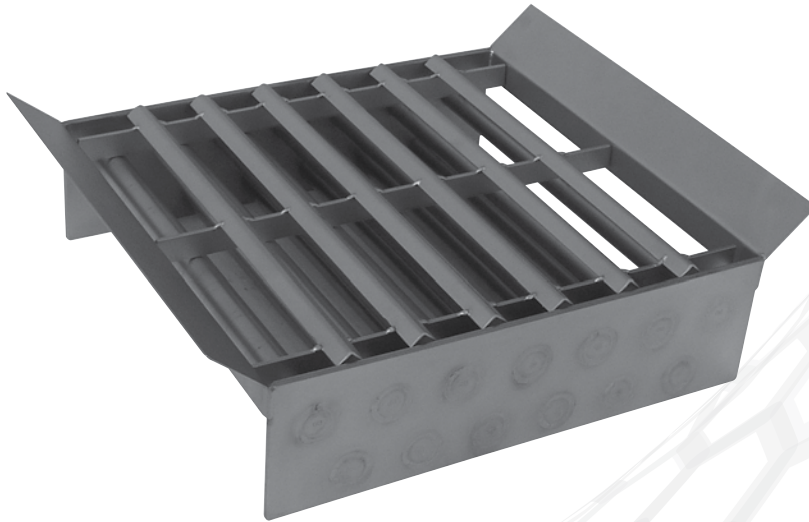
OFFSET

INCHES

MILLIMETERS



Wing Grates



This separator provides “final magnetic action” on bulk foods, chemicals, pharmaceuticals, etc, being packaged in barrels or similar type containers.

AVAILABLE IN:

- Ceramic
- Rare Earth
- Xtreme Rare Earth

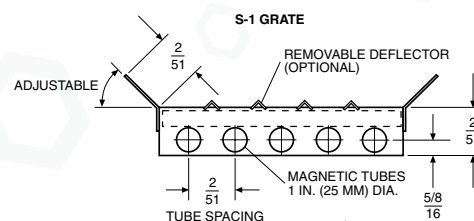
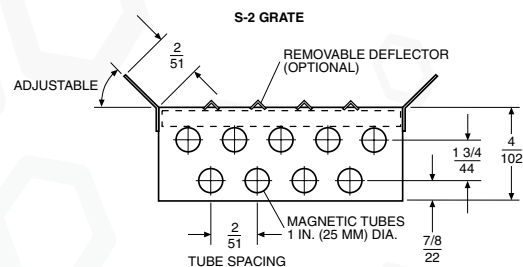
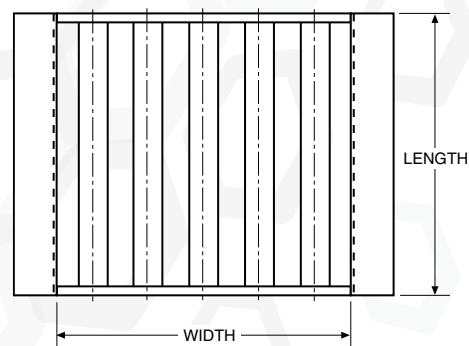
FEATURES:

- 1" (25mm) diameter stainless steel tubes spaced at 2" (51mm) centers
- Dimensions are flexible so special sizes can be furnished
- Wings can be bent to fit openings which vary from our standard sizes
- Double-bank gives added protection in installations where iron contamination is particularly acute

SUGGESTED INSTALLATIONS:

- Units can be quickly put to work in hoppers and floor openings
- No bolting necessary. Units can be lifted out for easy cleaning

DIMENSIONS:



Drawer Grates



Drawer-type grates have been specifically designed for use in closed chutes and ducts. They come complete with handle and latches. These models are easily inspected and cleaned by sliding the “magnetic drawer” from an opening made inside of housing.

AVAILABLE IN:

- Ceramic
- Rare Earth
- Xtreme Rare Earth

WIDTHS AVAILABLE:

- Any width: 2-1/2" (64mm) through 36-1/2" (927mm) in 2" (51mm) increments.
- Any length: 4" (102mm) through 36" (914mm) in 4" (102mm) increments.

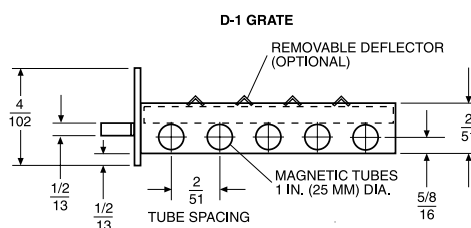
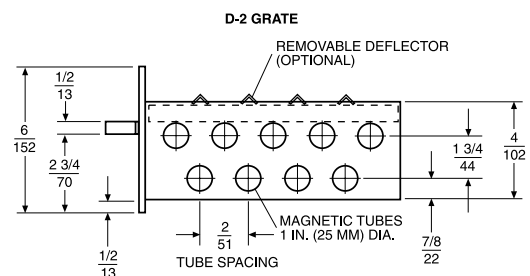
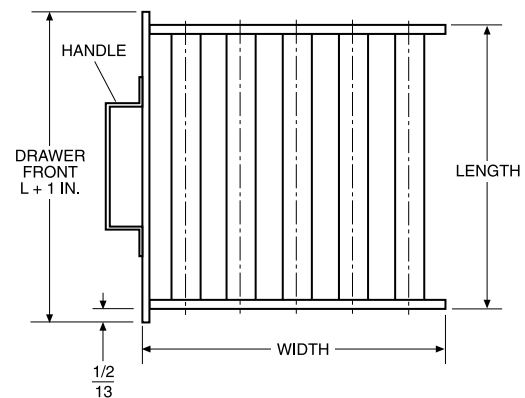
WEIGHTS AVAILABLE:

- D-1: Net Weight 25 lb/sq ft (122kg/.2 sq m)
- D-2 : Net Weight 35 lb/sq ft (171kg/.2 sq m)

FEATURES:

- Similar to Wing Grates, but with drawer front, handle and latch
- Easy installation
- Single row options available

DIMENSIONS:



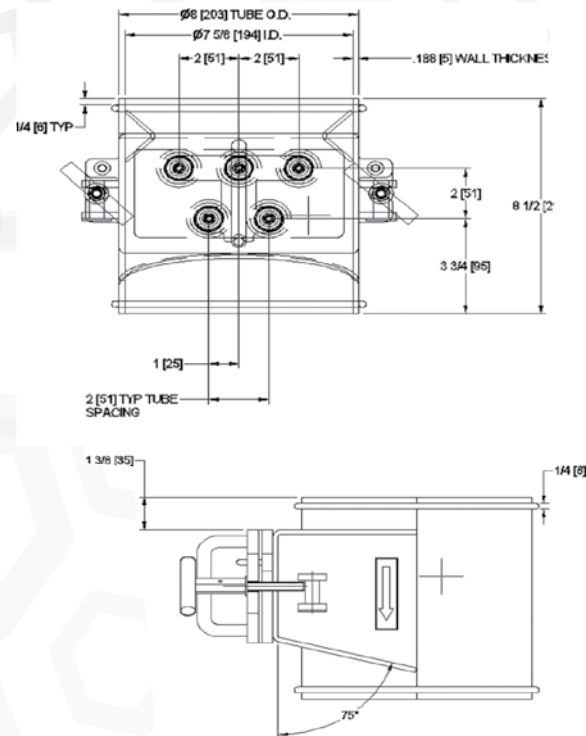
See the details in the
Quick Ship Catalog

Round Spout Separators



Round Spout Separators use permanent magnetic grate magnets to remove ferrous contamination in hoppers, chutes, floor openings and other areas where free flowing materials are present. These separators are also constructed to fit round chutes and discharges. Installation is inline and low profile.

DIMENSIONS:



AVAILABLE IN:

- Ceramic
- Rare Earth
- Xtreme Rare Earth

FEATURES:

- 304 stainless steel construction
- Swing-bolt door for easy access to magnets
- Glass bead surface finish
- Dust-tight construction
- 150°F Max Temp (Rare Earth and Xtreme Rare Earth)
- Sanitary construction (optional)
- High-temp options available

Round Spout Separator Diameter	Number of Tubes – Top Row	Number of Tubes – Bottom Row
6"	3 Tubes	2 Tubes
8"	3 Tubes	2 Tubes
10"	4 Tubes	3 Tubes
12"	5 Tubes	4 Tubes



See the details in the Quick Ship Catalog

Aftermarket PM RARE EARTH DRAWER MAGNET



Designed for the plastics industry, Eriez' Model PM aftermarket Rare Earth Drawer Magnet assembly will improve profitability by preventing costly product defects, plugged value gates, machine damage and downtime. These powerful Rare Earth Grates simply slide into most existing drawer magnet housings, immediately improving separation performance. Four sizes are available and they can even be used with mild steel housings.

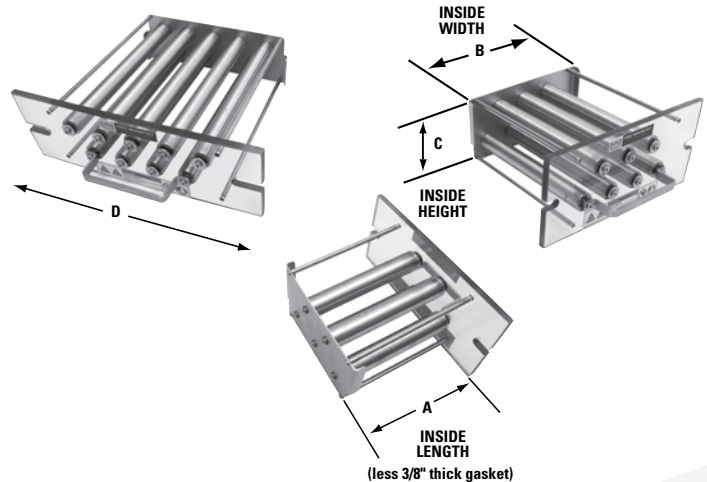
AVAILABLE IN:

- Xtreme Rare Earth only

FEATURES:

- PM Rare Earth magnets are up to 3x stronger than other Rare Earth
- Encased in 316 Stainless Steel Tubes
- Clear drawer front for easy inspection of magnets
- Improved tube spacing for superior tramp metal recovery
- Ability to capture and hold fine and weakly magnetic particles
- Magnets handle resin temperature up to 250°F
- Adhesive backed gaskets are included for customer installation on the door or housing
- Compatible with mild steel housing due to unique guide rod design
- Slots are 1/2" wide by 1-1/16" overall length

DIMENSIONS:



Nominal Housing Size		Qty. Magnet Tubes	A		B		C		D	
in	mm		in	mm	in	mm	in	mm	in	mm
4 x 4	102 x 102	3	4-3/16	106	3-13/16	97	3-7/8	98	6-1/2	165
6 x 6	153 x 153	5	6-3/16	157	5-13/16	148	3-7/8	98	8-1/2	216
8 x 8	203 x 203	7	8-3/16	208	7-13/16	198	3-7/8	98	10-1/2	267
10 x 10	254 x 254	9	10-3/16	259	9-13/16	249	3-7/8	98	12-1/2	318



See the details in the
Quick Ship Catalog



The PM Grate-In-Housing removes ferrous metal from raw materials to prevent costly equipment damage and downtime, as well as improve product purity. It is ideal for removing ferrous contamination from plastic pellets, flake and regrind prior to the injection moulding machine, extruder or compounding screw. It also removes fine ferrous material that can plug tiny valve gates and screens, or damage calendar rolls.

AVAILABLE IN:

- Rare Earth only

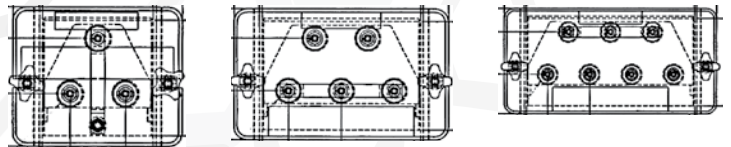
FEATURES:

- Two banks of Rare Earth permanent magnets
- Stainless steel housing
- Slide gate with a release handle
- 3 standard housing sizes
- Custom inlet and outlet sizes
- Door with quick release knobs
- Rare Earth Magnets suitable up to 250°F

SUGGESTED INSTALLATIONS:

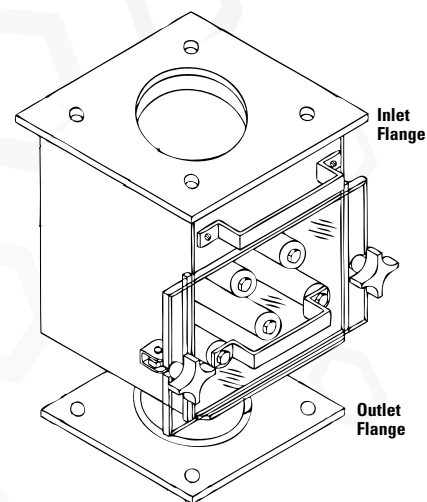
- Above injection molding machines, plastic extruders, and compounding equipment

STANDARD HOUSING OPTIONS:



MOUNTING FLANGE OPTIONS:

- Through holes, tapped holes, and threaded studs
- Top and bottom flanges can be different sizes and have different hole drills



Standard GRATE-IN-HOUSING



Tramp and fine iron removal in enclosed flow lines or at screen discharges is simplified by Eriez multi-bank units built into convenient housings. These separators have a slide-bolt door front which makes the magnetic tubes readily accessible for cleaning.

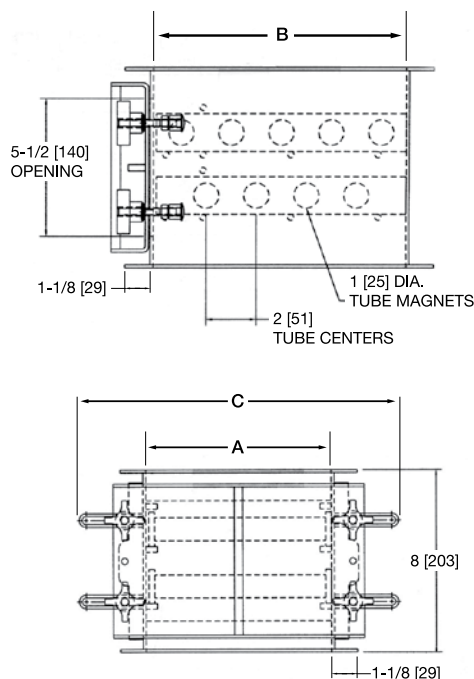
AVAILABLE IN:

- Ceramic
- Rare Earth
- Xtreme Rare Earth

FEATURES:

- 2 rows of staggered magnets
- Mild steel housing (Ceramic only)
- Removable door with plastic knobs
- All Rare Earth comes in a stainless steel housing and is optional for ceramic magnets
- Sanitary construction is optional
- 150°F Max Temp (Xtreme Rare Earth)

DIMENSIONS:



Tube Size	Grate Size	A		B		C		Weight	
		in	mm	in	mm	in	mm	lb	kg
3	4 1/8 x 6 1/8	4-1/8	105	6-1/8	156	10	254	20	9
4	6 1/8 x 8 1/8	6-1/8	156	8-1/8	206	12	305	25	11
6	8 1/8 x 10 1/8	8-1/8	206	10-1/8	257	14	365	30	14
8	10 1/8 x 12 1/8	10-1/8	257	12-1/8	306	16	406	50	23
10	12 1/8 x 14 1/8	12-1/8	308	14-1/8	359	18	457	61	28
12	14 1/8 x 16 1/8	14-1/8	359	16-1/8	410	20	508	80	36
14	16 1/8 x 18 1/8	16-1/8	410	18-1/8	460	22	559	100	45

Adapters are available with the housings as optional equipment.



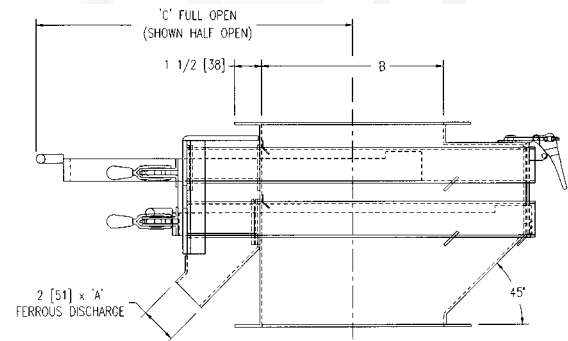
See the details in the Quick Ship Catalog

Easy-to-Clean GRATE-IN-HOUSING



Eriez Easy-To-Clean Model TGH-2 Drawer Grate-In-Housing uses a powerful rare earth magnet circuit to provide superior separation performance on fine tramp metal contamination. The Easy-to-Clean Grate-In-Housing provides for the quick removal of accumulated fine iron contamination. Simply slide the individual door fronts from the housing and the accumulated metal contamination is scraped from the tube and discharges out the front of the housing. The cleaning cycle is reduced to only a few seconds with this push-pull operation.

DIMENSIONS:



AVAILABLE IN:

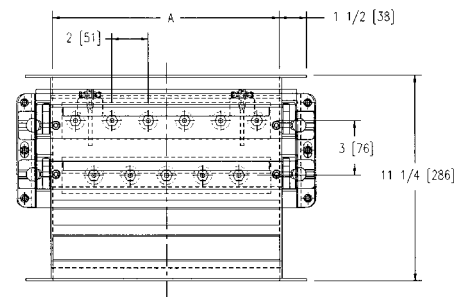
- Rare Earth
- Xtreme Rare Earth

FEATURES:

- 2 rows of staggered magnets
- Stainless steel tube scrapers
- Metal contaminant discharge chute
- All stainless steel construction
- Glass bead surface finish
- Easy push-pull operation
- 150°F Max temperature

SUGGESTED INSTALLATIONS:

- Ideal for applications where the process is stopped for grate magnet cleaning



Easy-to-Clean DSC GRATE-IN-HOUSING



Eriez Automated and Manual DSC Easy-to-Clean Grate-In-Housings are rugged tramp iron separators. With Eriez' single-skinned tube design, the iron is removed with an A286 stainless steel split ring (or Teflon ring for food products) sandwiched between a pressure plate and backing plate. As both banks cycle, tramp iron is stripped from the tubes outside the product zone. The tramp metal is then discharged through a small chute at the front of the housing. The traditional cleaning cycle is reduced to a simple push-pull operation.

AVAILABLE IN:

- **Ceramic** - The industry's strongest ceramic magnet, it generates twice the force of any other tube magnet
- **Xtreme Rare Earth** - The industry's strongest magnet, providing more surface holding force than other Rare Earth circuits

FEATURES:

- **Dust Tight Construction** (standard)
- **Sanitary Interior** (and options) – The housing is standard. Options for greater sanitary are available.
- **Convertible Design** – Upgradeable by converting from manual clean to automatic
- **Discharge chute** reduces ferrous product accumulation
- **Increased tube length** for better tramp metal stripping
- **316L stainless steel tubes** and **304 stainless steel housing**
- **Can be furnished** with all ceramic tubes, all rare earth tubes, or a combination of one bank ceramic and one bank rare earth



Some customers find their process has excessive tramp iron or the Grate-In-Housing is installed in a difficult to access location, requiring an upgrade to a self-cleaning model.

The DSC's "convertible" feature allows customers to purchase a Conversion Kit and use hand tools to bolt on upgrades to making the unit an automated cleaner. The conversion kits requires no cutting and no welding.

The conversion kit includes a NEMA 12 push button control panel with air prep and regulation while there is an option for remote control inputs as well.

FEATURES:

- The Automated Easy-to-Clean option is a completely self cleaning assembly
- Enlarged separation area ensures positive tramp metal removal
- Same construction as manual Easy-to-Clean DSC Grate-In-Housing
- Easy "Bolt On" accessory
- No weldings or cutting required

Easy-to-Clean GRATE-IN-HOUSING AUTOMATED MODEL



Eriez Automated Easy-to-Clean Grate-In-Housing combines the superior strength of Rare Earth magnet tubes with the simplicity of operation associated with opening a drawer.

Eriez' single skin tubes are housed in a dust-tight all stainless steel housing which is easily installed in square, rectangular or round piping. Unique stripping bushings remove the accumulated ferrous particles as the banks are cycled from the housing. As it is stripped off each tube, the iron contamination falls down the ferrous discharge chute, located outside of the product flow area.

These units are very effective in removing fine particle ferrous contamination (up to 1/2 inch [13 mm]) from many dry free-flowing products under gravity flow.

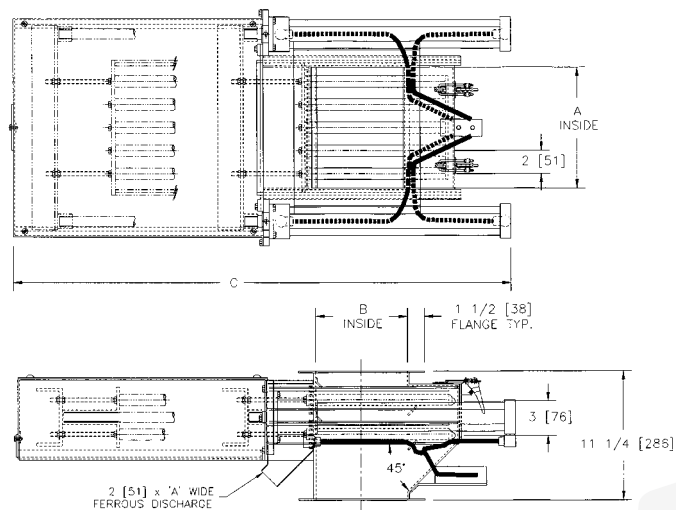
AVAILABLE IN:

- Ceramic
- Rare Earth
- Xtreme Rare Earth

FEATURES:

- Stainless steel housing with safety guard for moving parts
- Automated tramp metal removal at the push of a button
- Remote mounting panel with filter regulator, solenoid valve and NEMA 12 push button control

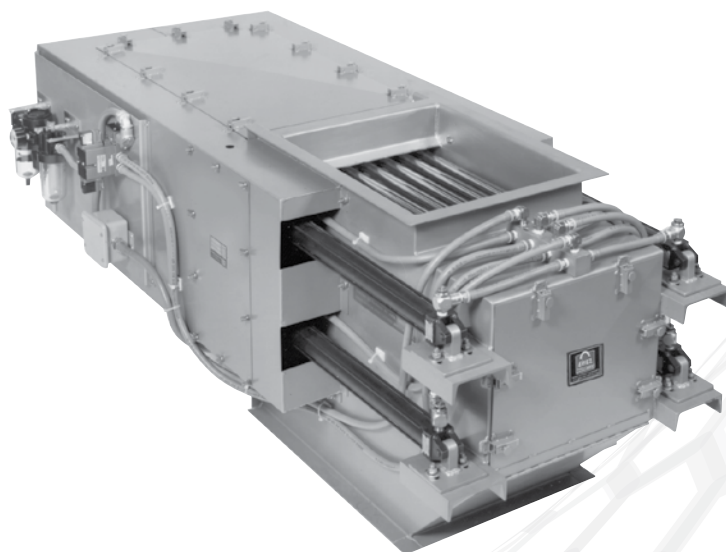
DIMENSIONS:



Standard Unit Size	A		B		C		Weight	
	in	mm	in	mm	in	mm	lb	kg
6-1/2 x 4	6-1/2	165	4	101	35-1/2	902	106	48
8-1/2 x 6	8-1/2	216	6	152	39-1/2	1003	129	59
10-1/2 x 8	10-1/2	267	8	203	43-1/2	1105	152	69
12-1/2 x 10	12-1/2	318	10	254	47-1/2	1207	175	79
14-1/2 x 12	14-1/2	368	12	305	51-1/2	1308	198	90
*16-1/2 x 14	16-1/2	419	14	356	55-1/2	1410	221	100
*18-1/2 x 16	18-1/2	470	16	406	60-1/2	1530	244	111
*20-1/2 x 18	20-1/2	521	18	457	64-1/2	1632	267	121
*22-1/2 x 20	22-1/2	572	20	508	68-1/2	1733	290	132
*24-1/2 x 22	24-1/2	622	22	559	72-1/2	1835	313	142
*26-1/2 x 24	26-1/2	673	26	610	76-1/2	1936	336	152
*28-1/2 x 26	28-1/2	724	28	660	80-1/2	2038	359	163

* With center divider.

Self-Cleaning GRATE-IN-HOUSING



Eriez Self-Cleaning Model GH-12 Grate-In-Housing offers the superior strength of Rare Earth magnets with a completely automated self cleaning system to remove fine tramp iron contamination. The GH-12 cycles each grate row independently so at least one row always remains in the product flow.

Tubes are housed in a dust-tight all stainless steel housing which is easily installed in square, rectangular or round piping. Unique stripping bushings remove the accumulated ferrous particles as the banks are cycled from the housing. As it is stripped off each tube, the iron contamination falls down the ferrous discharge chute, located outside of the product flow area.

These units are very effective in removing fine particle ferrous contamination (up to 1/4 inch [6 mm]) from many dry free-flowing products under gravity flow.

AVAILABLE IN:

- Ceramic and Rare Earth

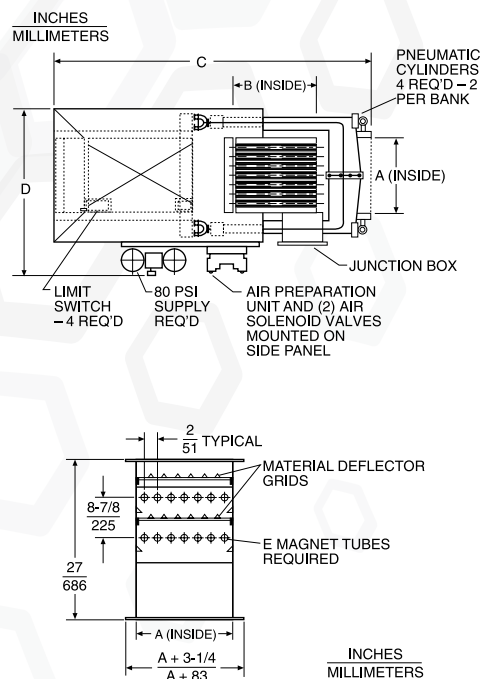
FEATURES:

- Automatic tramp metal removal of individual magnet rows
- Solid state NEMA 12 control with timer to adjust automatic cleaning frequency
- Independent cleaning for each magnet row

SUGGESTED INSTALLATIONS:

- Designed for completely automated operation
- The GH-12 is ideal for applications where the process is continuous and grate cleaning occurs during operation

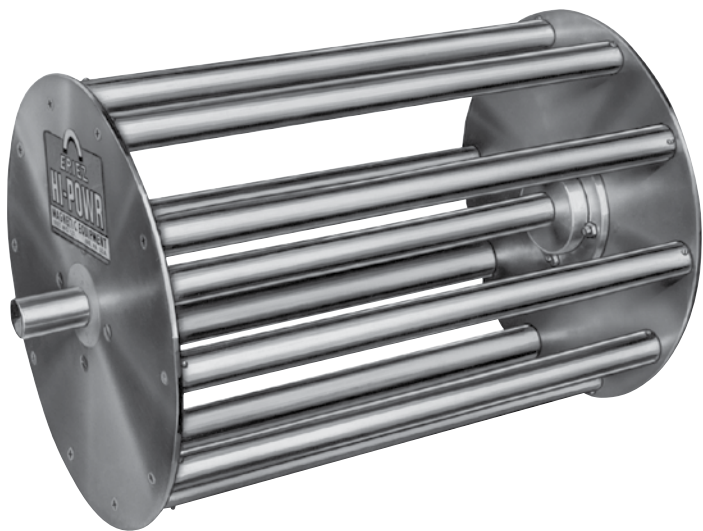
DIMENSIONS:



Normal Size		A		B		C		D		E	Shipping Weight	
in	mm	in	mm	in	mm	in	mm	in	mm	#	lb	kg
14 x 12	358 x 305	14	358	12	305	56	1524	32	813	14	736	334
16 x 20	408 x 508	16	408	20	508	72	1981	34	883	16	899	408
20 x 20	508 x 508	20	508	20	508	72	1981	38	985	20	985	447

Special sizes and designs are available upon request.

Rota-Grate®



Eriez Rota-Grates are designed to remove large pieces of unwanted iron as well as minute ferrous particles from material flows that tend to clog and bridge when passed through small openings. This dual action unit rotates powerful magnetic tubes through the material. The magnetic action attracts and holds the unwanted iron and the rotary action prevents the material flow from packing and plugging the processing line.

AVAILABLE IN:

- Ceramic
- Rare Earth
- Xtreme Rare Earth

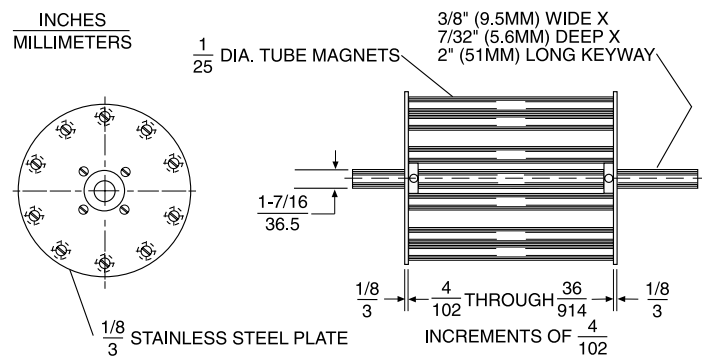
FEATURES:

- Provide magnetic protection without restricting and clogging material flow
- Rugged construction
- Magnetic elements completely encased in stainless steel and fastened to stainless steel end plates
- Bronze hubs and steel shaft, for added durability

SUGGESTED INSTALLATIONS:

- At the discharge of either open or enclosed chutes
- Enclosed within housings in open or closed duct systems
- They are built complete with a shaft with ample extensions for a flange type or pillow block type bearings as well as for the drive pulley

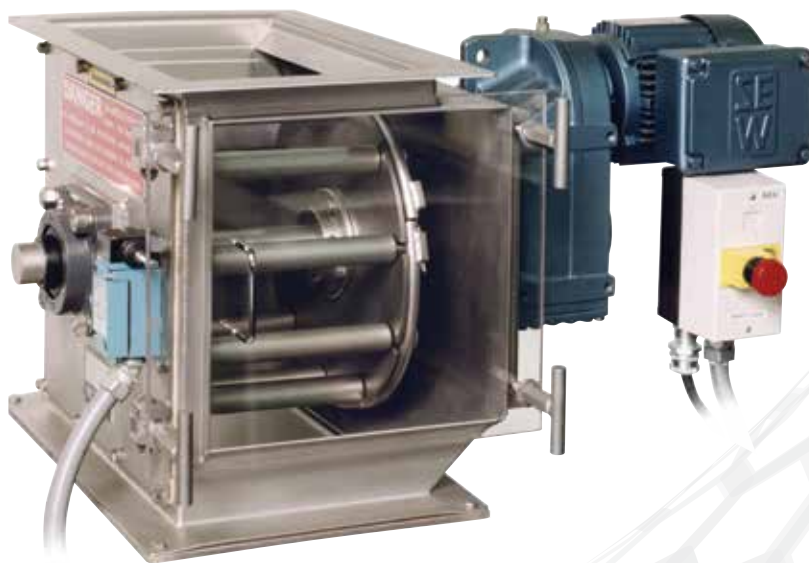
DIMENSIONS:



SIZE & WEIGHT

Standard Unit Width		Diameter		Weight		Larger Sizes - Follow Ratio
in	mm	in	mm	lb	kg	
4	102	12	305	25	11	Add 9 lb (4kg) for each additional 4" (102mm) of width
8	203	16	406	40	18	Add 12 lb (5kg) for each additional 4" (102mm) of width
12	305	22	559	70	32	Add 16 lb (7kg) for each additional 4" (102mm) of width

Available in 24 sizes - widths in 4" (102mm) increments.



Rota-Grates In-Housings are ideal for dusty installations where an enclosed system is necessary. The slowly rotating tube circuit will catch unwanted or damaging tramp iron and prevent bridging of sticky or powdery materials like flour or corn starch.

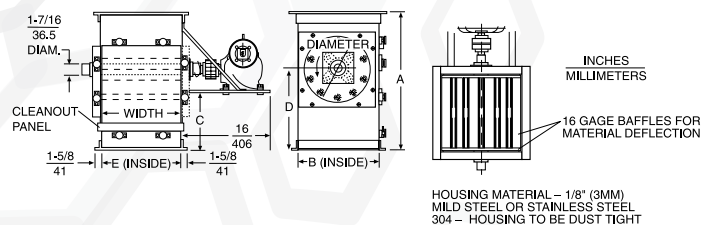
AVAILABLE IN:

- Ceramic
- Rare Earth
- Xtreme Rare Earth

FEATURES:

- Mild steel or stainless steel housing with flanges for easy installation
- Large access panel doubles as clean out shelf to prevent ferrous material from reentering the system
- Available with:
 - Removable tube assemblies for easy cleaning
 - 16 RPM gear motor drive

DIMENSIONS:



Diameter		A		B		C		D		E	
in	mm	in	mm	in	mm	in	mm	in	mm	in	mm
12	305	24	610	14	356	10-1/8	257	14	356	12-7/8	327
16	406	28	711	18	457	12-1/8	308	16	406	16-7/8	428
22	559	32	813	24	610	15-1/8	384	19	483	20-7/8	530

SPECIFICATIONS:

Width		12" Diameter (305mm)				16" Diameter (406mm)				22" Diameter (559 mm)			
		Weight	Volume To:	Weight	Volume To:	Weight	Volume To:	Weight	Volume To:	Weight	Volume To:	Weight	Volume To:
in	mm	lb	kg	ft³/hr	m³/hr	lb	kg	ft³/hr	m³/hr	lb	kg	ft³/hr	m³/hr
4	102	78	35	200	6	-	-	-	-	-	-	-	-
8	203	102	46	400	11	112	51	550	16	-	-	-	-
12	305	118	54	600	17	31	59	825	23	165	75	1200	34
16	406	128	58	800	23	149	68	1100	31	187	85	1600	45
20	508	149	68	1000	28	169	77	1375	39	209	95	2000	57
24	610	165	75	1200	34	186	84	1650	47	231	105	2400	68
28	711	182	83	1400	40	208	94	1925	55	253	115	2800	79
32	813	197	89	1600	45	225	102	2200	62	275	125	3200	91

Rota-Grate® IN-HOUSING REMOVABLE TUBE ASSEMBLY



Same design as the Rota-Grate In-Housing, with removable tube magnet assemblies. This greatly speeds cleaning during operation.

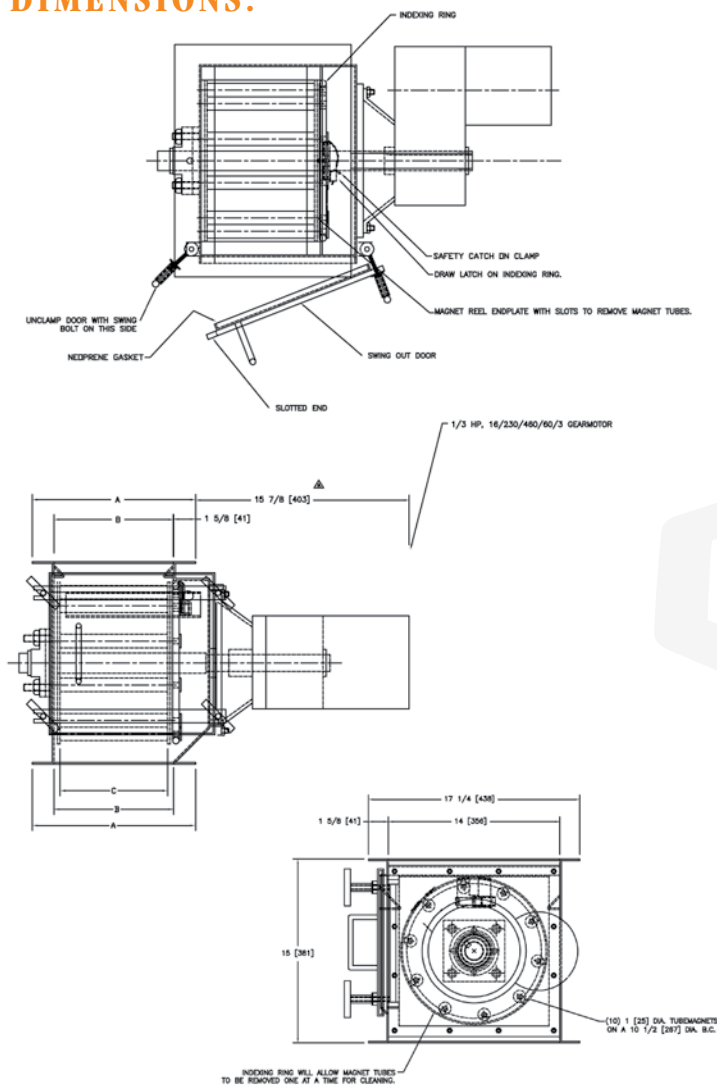
AVAILABLE IN:

- Ceramic
- Rare Earth
- Xtreme Rare Earth

FEATURES:

- Individual Tube Magnets can be removed one-by-one for easy cleaning
- Low profile housing design
- SEW Euro drive motor permits rotating of reel by hand to aid in the cleaning process
- Swing-bolt, hinged door with "T"-handles for easy access

DIMENSIONS:



Rota-Grate® SELF-CLEANING



The rotating tube assembly periodically cycles through a special tube cleaning wall that removes ferrous metal from the tube magnets outside the product flow. This design eliminates the need to clean each tube manually and greatly reduces the amount of time associated with cleaning.

Cleaning cycle is dependent on the amount of ferrous contamination in the system. The timer is adjustable for optimum separation performance.

AVAILABLE IN:

- Ceramic
- Rare Earth
- Xtreme Rare Earth

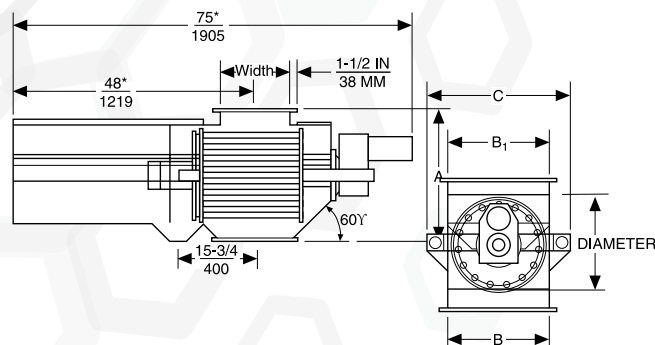
FEATURES:

- Automatic air-operated unit retracts tube cage from product area during cleaning cycle
- Control includes programmable timer for optimum cleaning cycles
- All stainless steel housing
- 16 RPM gear motor

SUGGESTED INSTALLATIONS:

- Ideal for remote installations and applications where routine cleaning is problematic

DIMENSIONS:



Diameter		A		B		C	
in	mm	in	mm	in	mm	in	mm
12	305	23-1/4	590	14	356	18-3/4	476
16	406	27-1/4	692	18	457	22-3/4	578
22	559	33-1/4	844	24	610	28-3/4	730

Width		12" Diameter (305mm)				16" Diameter (406mm)				22" Diameter (559 mm)			
		Weight		Volume To:		Weight		Volume To:		Weight		Volume To:	
in	mm	lb	kg	ft³/hr	m³/hr	lb	kg	ft³/hr	m³/hr	lb	kg	ft³/hr	m³/hr
4	102	78	35	200	6	-	-	-	-	-	-	-	-
8	203	102	46	400	11	112	51	550	16	-	-	-	-
12	305	118	54	600	17	31	59	825	23	165	75	1200	34
16	406	128	58	800	23	149	68	1100	31	187	85	1600	45
20	508	149	68	1000	28	169	77	1375	39	209	95	2000	57
24	610	165	75	1200	34	186	84	1650	47	231	105	2400	68
28	711	182	83	1400	40	208	94	1925	55	253	115	2800	79
32	813	197	89	1600	45	225	102	2200	62	275	125	3200	91



WORLD AUTHORITY IN SEPARATION TECHNOLOGIES



WORLD HEADQUARTERS

2200 Asbury Road • Erie, PA 16506-1402 U.S.A.

P: 814-835-6000 • F: 814-838-4960

eriez@eriez.com • www.eriez.com



AUSTRALIA

Eriez Magnetics Pty. Ltd.

Epping, Victoria

P: +61 3 8401 7400



BRAZIL

Belo Horizonte, Minas Gerais

P: 55 31 3281 9108



CANADA

Eriez Flotation Division

Delta, British Columbia

P: +1 604-952-2300



CHILE

Las Condes, Santiago

P: 56 2 29523400



CHINA

Qinhuangdao and Tianjin

P: 86-22-8390-4608



INDIA

Athipet, Chennai

P: 91-044-2652-5000



JAPAN

Urayasu, Chiba

P: +81-47-354-6381



MEXICO

Querétaro, Tlalnepantla

P: 52 555 321 9800



PERÚ

Surco, Lima

P: 51 1 719 4150



SOUTH AFRICA

Boksburg, Gauteng

P: 27-011-444-9160



UNITED KINGDOM

Eriez Magnetics Europe Ltd

Bedwas, Caerphilly

P: 44-29-2086-8501



UNITED STATES

Asbury Rd | Wager Rd, Erie, Pennsylvania

P: 814-835-6000



Note: Some safety warning labels or guarding may have been removed before photographing this equipment.

Eriez and Eriez Magnetics are registered trademarks of Eriez Manufacturing Co., Erie, PA

ERIEZ MANUFACTURING CO ©2020

ALL RIGHTS RESERVED

PRINTED IN USA