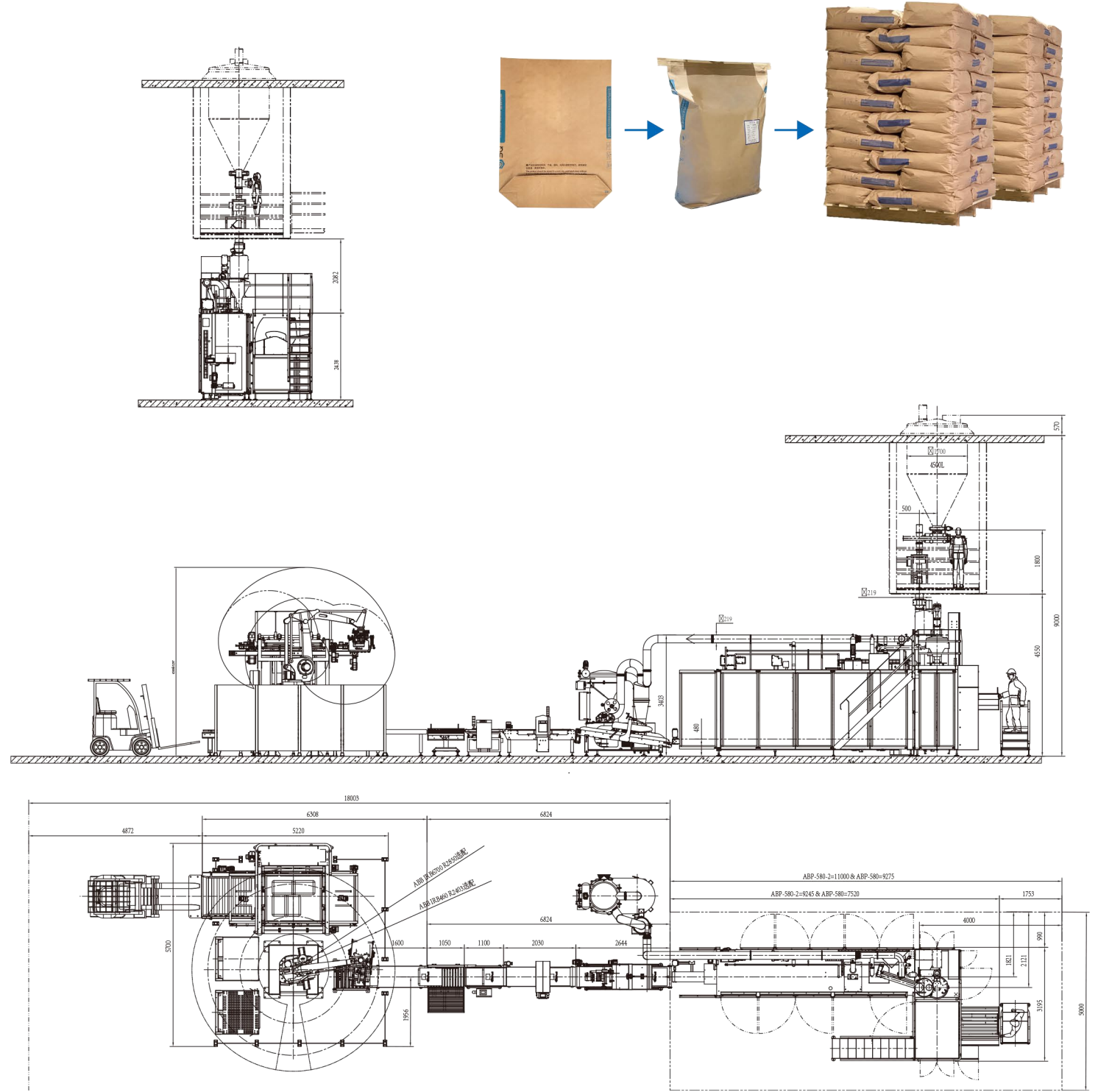


We're focus on: food、chemicals and pharmaceutical industry...

- 01 Solve the pain point of powder packing
- 02 Stability and Efficient
- 03 Hygienic and Safety
- 04 Flexible
- 05 Low energy consumption

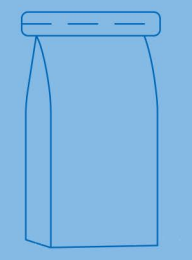


elin Packaging Machinery Co., Ltd
 Add: No15 Huanmao 1st Rd, Huoju Development Area, Zhongshan City, Guangdong Province, China
 Tel: +86-760-8987 7898
 Fax: +86-760-8987 7339
 Email: sales@elinpack.com
 Website: www.elinpack.com

Copyright reserved.



ABP-580



**AUTOMATIC HEAVY BAG
 BOTTOM-UP
 PACKING SYSTEM**



elinpack is a company founded in 2010 with a focus on subdivided fields that is committed to the powder packing machinery. Our original intention is to solve the pain points of powder packing industry, create value for society, and contribute to the industry's development. With the craftsman spirit of excellence, meticulousness and pursuit of excellence as the gene, we embrace change, pioneering and innovative, and provide competitive products for the industry.

elinpack is mainly engaged in three series of products: Heavy bag bagging series, Rigid container filling series, and Ingredient batching solutions. Products are widely used in food, medicine, chemical and so on. We have been cooperated with Angel Yeast, Junlebao, Unilever, Nestle, Lesaffre, Roquette, IFF, Lee Kum Kee, Lanxess, DSM, SQ GROUP, BODUO, etc well-know companies, also have established a win-win cooperative relationship with them to help them to create and maintain competitive advantages in order to improve their performance.

elinpack looks forward to cooperating with more domestic and foreign enterprises, taking the road of sustainable development and creating more possibilities together.

Enterprise honor in recent years :
 National High-Tech Enterprise, Zhongshan Engineering Technology Research Center, ISO9001 Quality Management System Certificate, ISO14001 Environmental Management System Certificate, ISO18001 Health and Safety Management System Certificate, SGS-SMETA Report.....

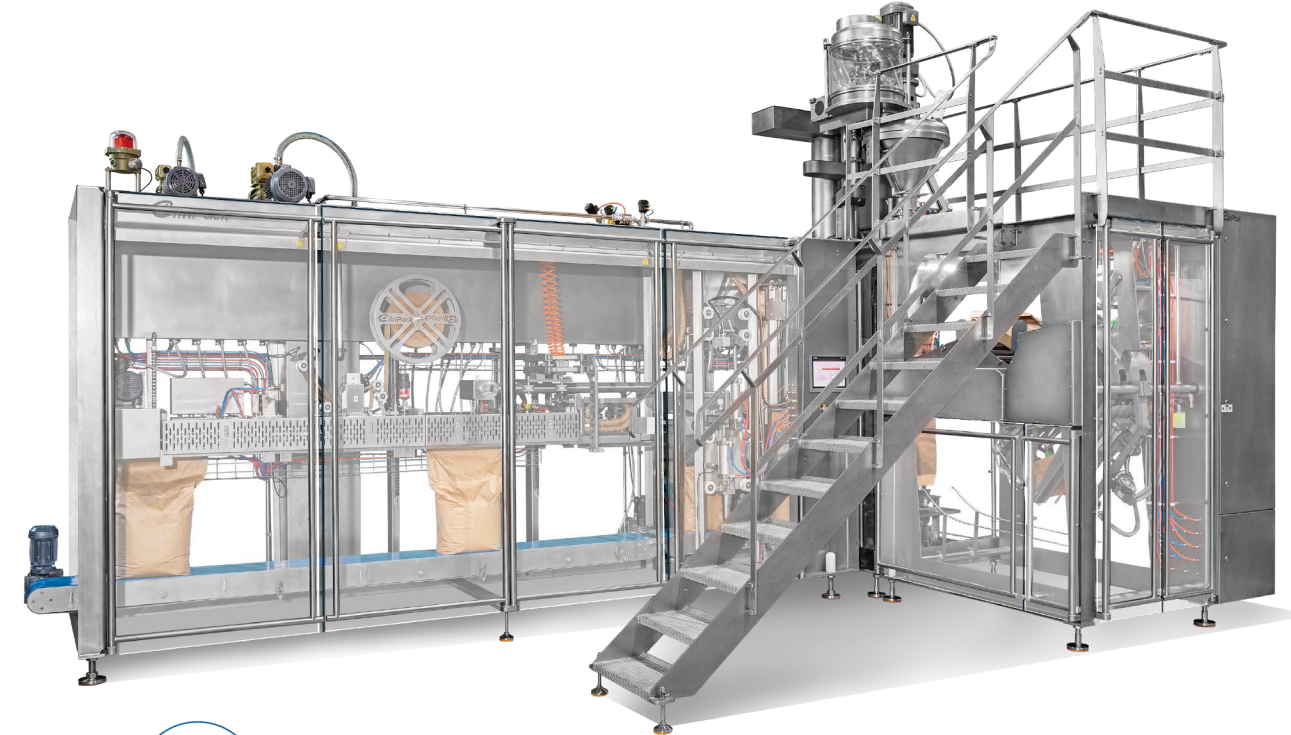


Some of Our Customers (Ranking Is Not In Particular Order)





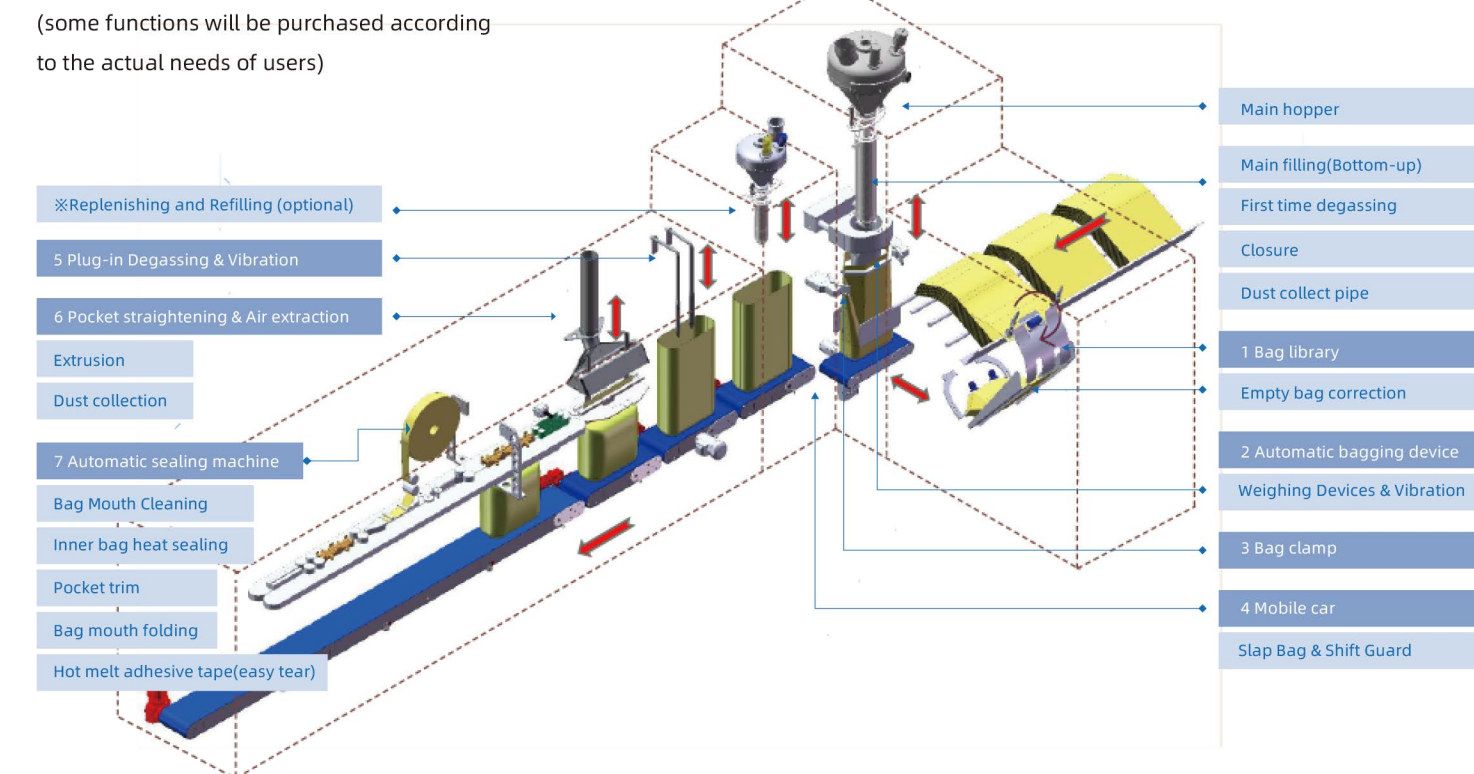
ABP-580 Automatic Heavy Bag Bottom-up Packing System



Automatic Bottom-Up Big Bag Packer	
Dosing Range	10-25kg
Packing Accuracy	±10-30g
Applicable Bag Size	L750-1050, W450-580
Packing Speed	120-180bag/h (ABP-580, One time filling) 210-300bag/h (ABP-580-2, Two times filling)

Packing station process

(some functions will be purchased according to the actual needs of users)

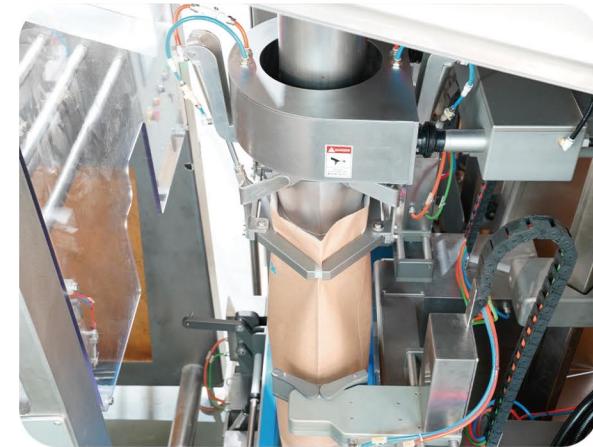


1 Auger Filler is Easy For Assembly & Disassembly

- 1 The hopper of auger filler is adopts the innovative structure of main hopper + auxiliary hopper;
- 2 The auxiliary hopper acts as a buffer for the upstream feed pressure, also has the function of sedimentation, which can not only quickly supply powder to the main hopper, but also ensure the stability of the main hopper material level;
- 3 The design of main hopper is half -open which can be help to do cleaning quickly;
- 4 The strong of hopper, ensure quality assurance;



2 Bag Clamp with Dust Collect Function



- 1 Minimalist weighing and bag clamping mechanism, simple outside and complicated inside
- 2 The unique design not only ensures the weighing accuracy but also achieves the purpose of hygienic design, dust-proof and waterproof
- 3 The design of the bag mouth ring clip bag hoop and the bag mouth close fitting design solves the problem of dust leakage

3 Degassing

- 1 Microporous filter rod plug-in degassing ;
- 2 Straighten the pocket and do vacuum ;
- 3 Adaptive bag squeeze exhaust + vibration ;



4 Easy-tear Heat Melt Sealing

- 1 Replace the traditional stitched sealing method
- 2 The inner bag mouth is folded together with the outer bag after being cleaned and heat-sealed and wrapped with easy-to-tear hot-melt adhesive tape
- 3 Avoid the problem of thread pollution and time-consuming and laborious unpacking;



5 Large Capacity Bag Library

- 1 The heavy bag bagging machine adopts a high-position and large-capacity bag stor-age, and the bag storage capacity is more than 300 pieces;
- 2 The high-level bag storage avoids the problem of difficult cleaning caused by the low-level bag storage being close to the ground ;

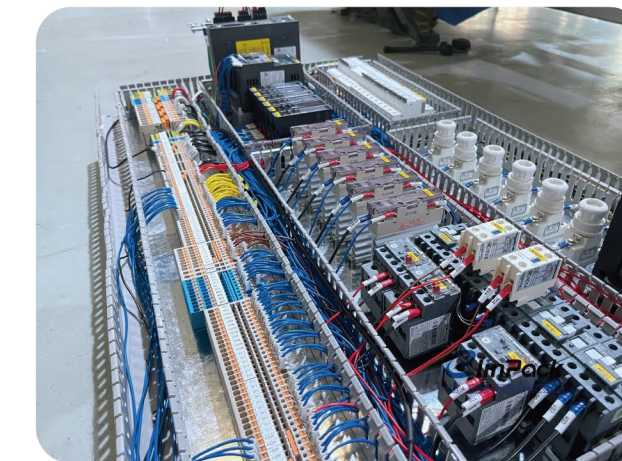


6 Flexible

- 1 Equipment flexible design, one-key switching, stable and efficient;
- 2 Increase uptime while reducing downtime;
- 3 Lowest change-out bag loss ;
- 4 Large HMI Operation Guide;
- 5 Develop an ergonomic user experience that is easy for operators to learn and use .



7 Electrically Reliable Design

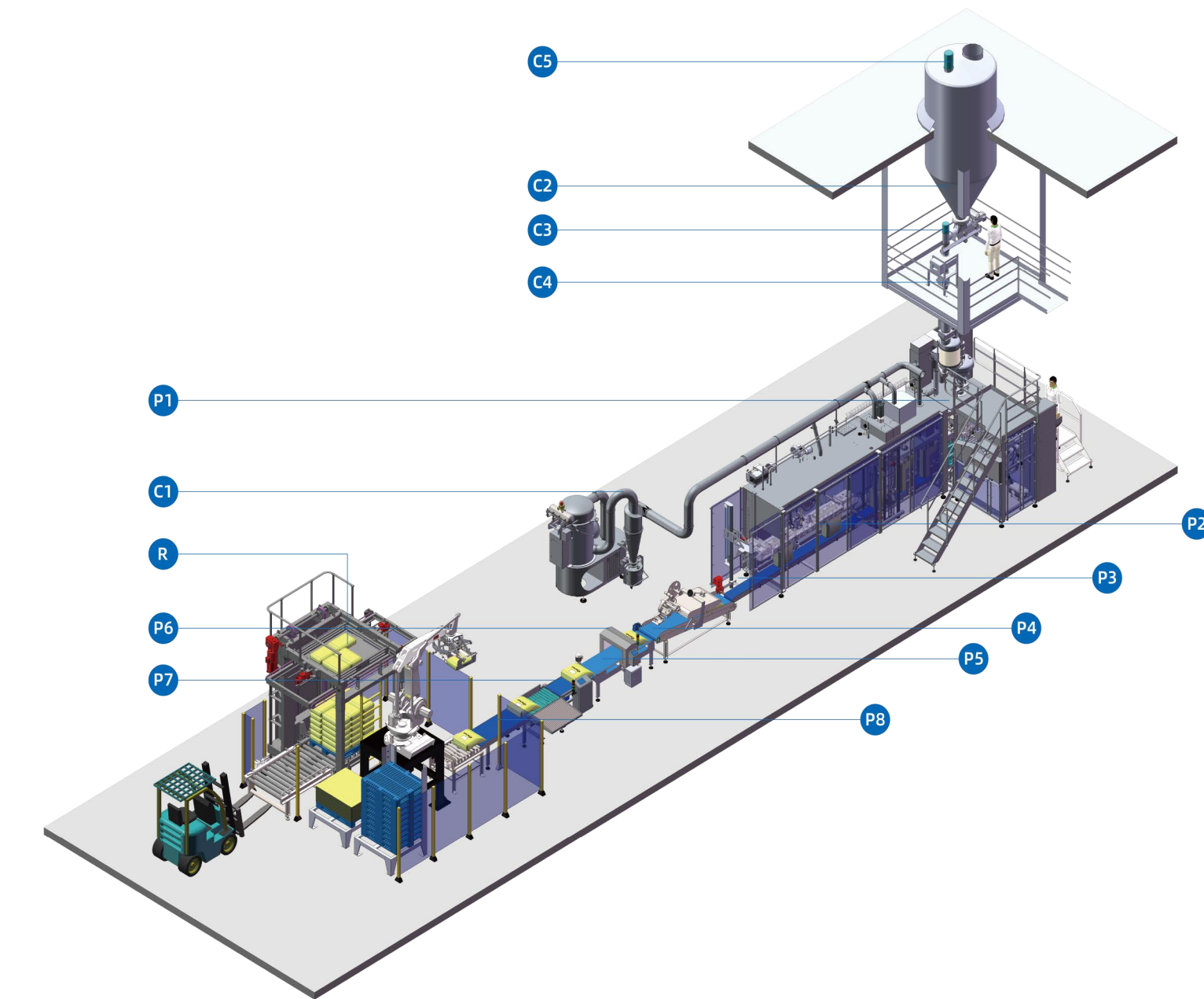


- 1 70% of the wires and air pipes are integrated in the internal structure of the machine, which is stable and reliable
- 2 The wiring of distribution cabinets is stan-dardized and easy to maintain;

Our Certifications



Automatic Heavy Bag Bottom-up Packing System Project



- C1 Dust Collector
- C2 Horizontal Screw Feeder
- C3 Metal Detector (Tube Type)
- C4 Platform (SUS304)
- C5 Storage Silo
- P1 Automatic Bottom-up Bagger ABP-580
- P2 90 Degree Bag Pusher
- P3 Bag Flattner
- P4 Metal Dectector
- P5 Weight Checker
- P6 Labeling Machine
- P7 Rejector
- P8 Finished Product Belt Conveyor
- R Automatic Palletizer (High Levelv Shaping Machine)