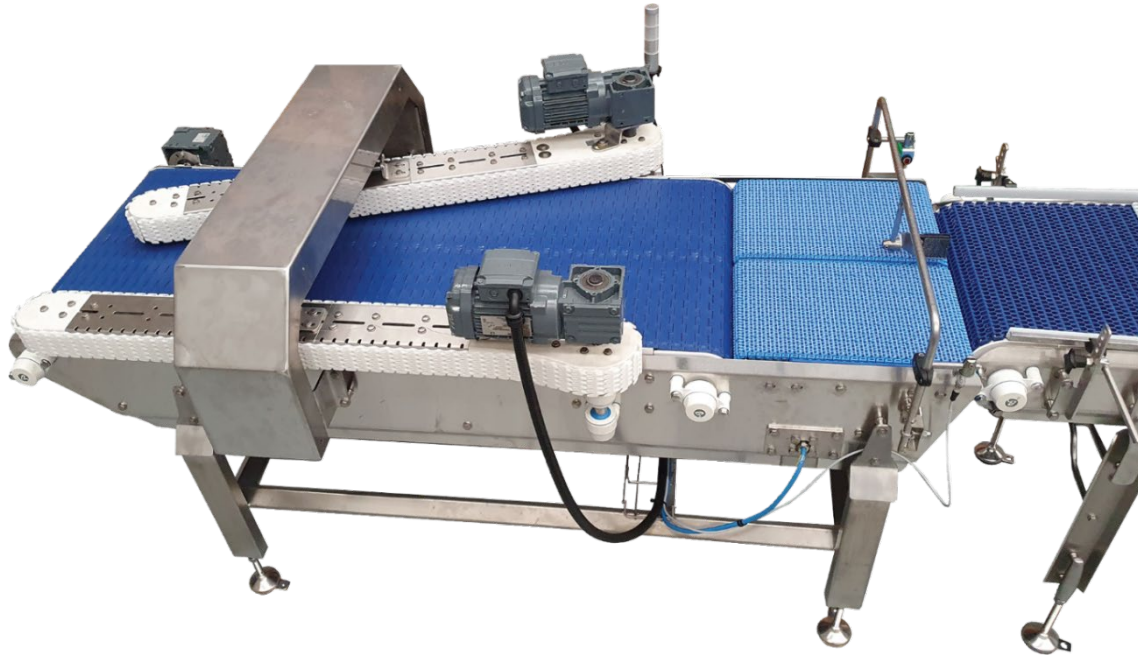
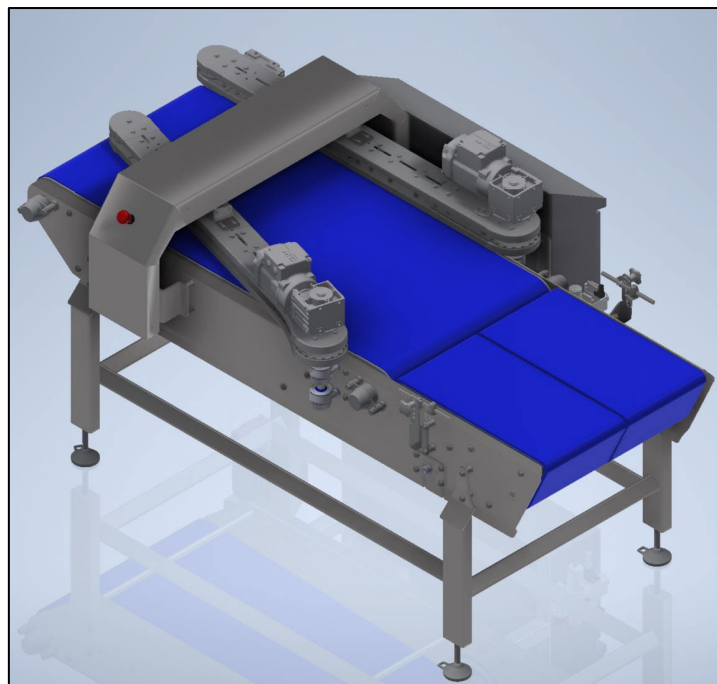
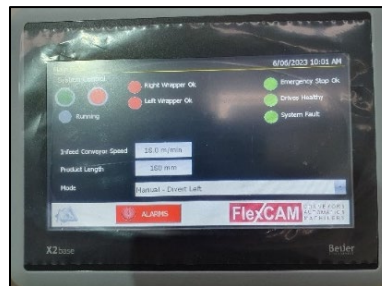
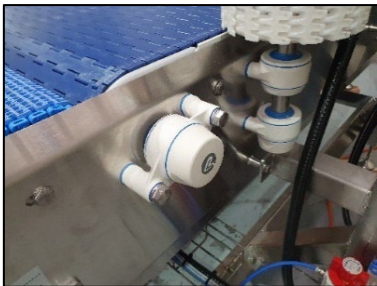


FlexMerge - Lane Merging System for 2:1 – 3:1 – 4:1 and 2:2 formats



Seamless converging of product between lanes. Ideal for flow wrapper or case packer infeed's where multiple lines need to be merged into a single lane for weighing, case packing etc. FlexCAM's **FlexMerge** merging system is capable of merging products at speeds up to 300ppm (depending on product size). It is supplied with or without side drive belts depending on the application.



Application:	Merging products (naked and wrapped loose product, pouches, trays, tubs, packets, cartons, etc) at speeds of more than 300 parts per minute depending on size)
Recommended use:	› Prior to flow wrapping / carton erecting equipment / Check weighers or where multiple lines need to be merged to a single lane.
Industry applications:	Naked and wrapped products – punnets – trays – bagged products – wrapped products – bread and other baked products, and similar.
Benefits:	<ul style="list-style-type: none"> › Perfectly merges products into a single lane. › Hygienic design ensures easy cleaning. › One Motion™ magnetic drives - ensures perfect speed changes between products. › Short lead times - Designed and built in Melbourne. › Low energy consumption
Belt width:	› Matched to product type and size
Conveyor length:	› Matched to product size
Specification:	Designed for use prior to weighing, wrapping and packing equipment where multiple lines of product are sent to single line. The FlexMerge will
Design features:	<ul style="list-style-type: none"> › Speeds of +180ppm › Stainless steel frames / shafts etc › Low noise conveyor decks › FDA Approved belting (modular belts - no need for tracking) › Hygienic design with minimal flat edges › One Motion™ Magnetic Drives on staging conveyors – provides servo like speed control › Modular design = Simple maintenance › Compact – small footprint › Compact Logix PLC for product recipes – simple to configure. › PowerFlex 525 Drives for speed control › HMI panel for product menu changes › IP65 and IP69 rated drives › Local and global E-stops for operator safety