

Tridis 180

 Vegetables & Fruits

 Potatoes

Grow your business with
this versatile dicer.

KEY FEATURES

Obstruction-free product flow and minimal cutting zone length allow the FAM Tridis 180 to run at a higher velocity, which increases capacity, while ensuring ultimate cut quality.

The machine geometry and dimensions have been designed to reduce the slivers and off-cuts.

Set-and-Forget cassette-like circular knife spindles can be easily mounted onto and removed from the machine with minimal downtime.

The angle set system is an easy tool to position the slicing guide perfectly; always the correct clearance of the slicing guide: Set-and-Forget!

The innovative dicer is protected by 3 safety points at the shaft of the impeller wheel (slipper clutch) and the circular knife spindle (plastic coupling disc) and timing belt.

The FAM Tridis 180 is a smart choice in terms of sanitation. The machine has no hidden corners or visible wires and the frame is open with only slant surfaces.

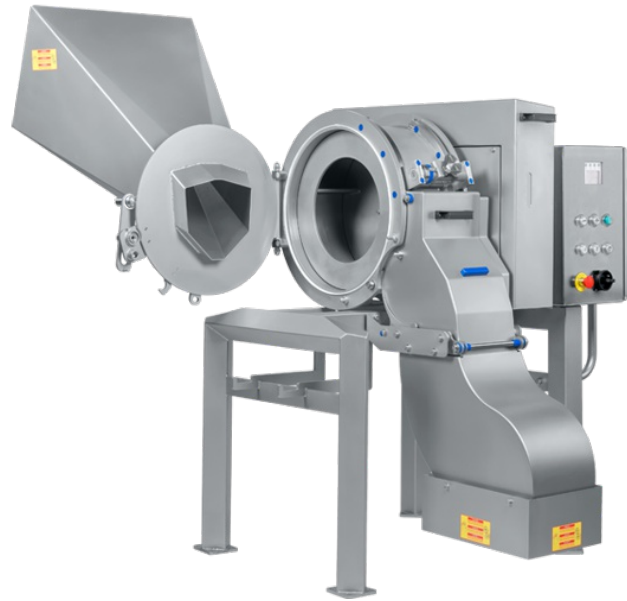
The Tridis 180 dicer has only 2 robust stainless steel safety switches.

The machine has open, steel ball bearings - no shimming required - that are periodically greased via grease nipples. Optionally available are sealed stainless bearings.

FAM Tridis 180 is equipped with a sanitary sealed electrical cabinet, which can be moved backwards away from the drive area to allow full access to this zone.

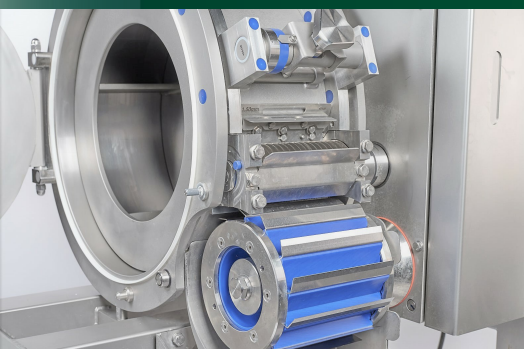
Various auxiliary tools are available to guarantee a quick changeover of the cutting tools and to simplify maintenance.

Existing FAM Tridis 240 customers will be able to share the circular knives with Tridis 180, as the knives are identical.

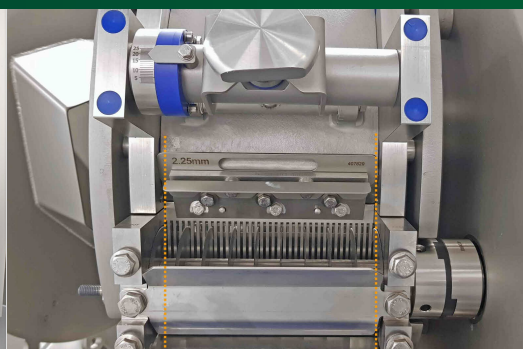



HIGHLIGHTS

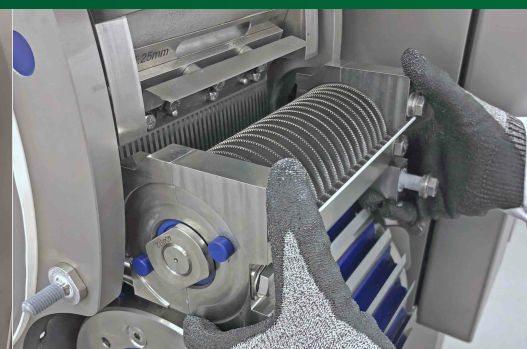
- The FAM Tridis™ 180 is a new tridimensional dicer from FAM. It is specifically designed to help processors of fresh vegetables and IQF vegetables and fruits reach perfect cut quality at medium-high volumes.
- The cutting principle is based on the proven technology of the FAM Tridis 240, a very successful high capacity dicer in use by many leading food processors.
- Its small footprint but rugged stainless steel design allow processors to dice a variety of soft and hard products. No matter if you are looking to cut peaches, mango, pears or root vegetables such as carrots, beets, onions and potatoes, the FAM Tridis 180 is your perfect match.
- It can achieve medium-high capacities from 1 500 kg per hour (3 mm dice) up to 6 tons per hour (10 mm dice), depending on the type of product.



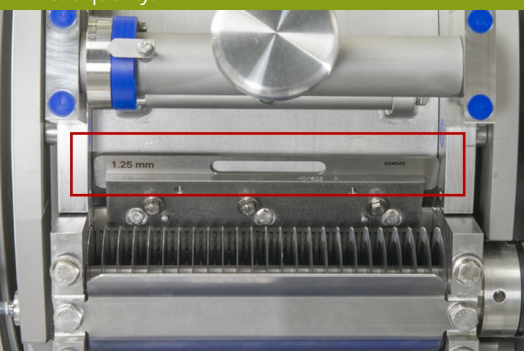
Obstruction-free product flow and minimal cutting zone length allow the FAM Tridis 180 to run at a higher velocity, which increases capacity, while ensuring ultimate cut quality.



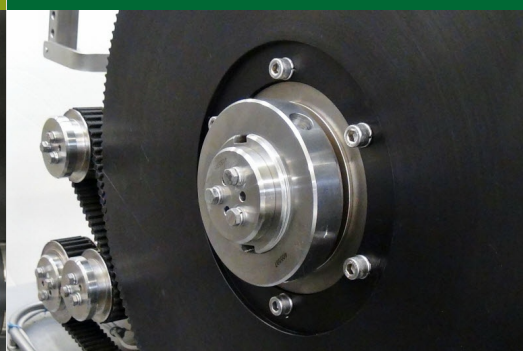
The machine geometry and dimensions have been designed to reduce the slivers and off-cuts.



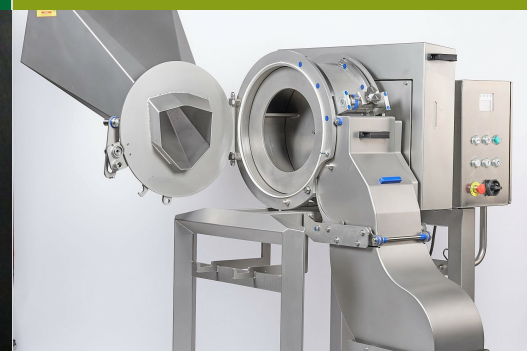
Set-and-Forget cassette-like circular knife spindles can be easily mounted onto and removed from the machine with minimal downtime.



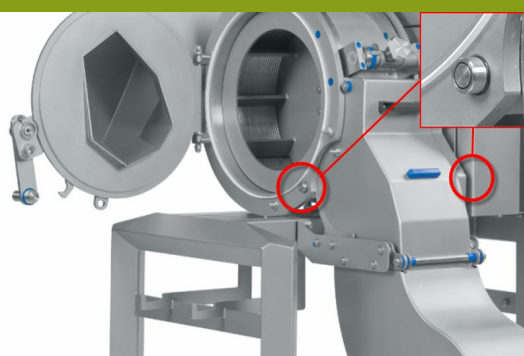
The angle set system is an easy tool to position the slicing guide perfectly: always the correct clearance of the slicing guide: Set-and-Forget!



The innovative dicer is protected by 3 safety points at the shaft of the impeller wheel (slipper clutch) and the circular knife spindle (plastic coupling disc) and timing belt.



The FAM Tridis 180 is a smart choice in terms of sanitation. The machine has no hidden corners or visible wires and the frame is open with only slant surfaces.



The Tridis 180 dicer has only 2 robust stainless steel safety switches.



The machine has open, steel ball bearings - no shimming required - that are periodically greased via grease nipples. Optionally available are sealed stainless bearings.



FAM Tridis 180 is equipped with a sanitary sealed electrical cabinet, which can be moved backwards away from the drive area to allow full access to this zone.



Celecric dices



Bell peppers dices



Tomato dices



Pumpkin dices



Red Beetroot Slices



Red Beet Strips



Carrot Strips



Zucchini Strips

SPECIFICATIONS

MACHINE DIMENSIONS & WEIGHT

Dimensions basic machine (LxWxH)
1 578,00 x 1 299,00 x 1 772,00 mm | 62.13' x 51.14' x 69.76'
Weight basic machine
560 kg | 1,235 lbs

MOTOR

Power
2,20 kW | 2.95 hp

CUT SHAPES & SIZES

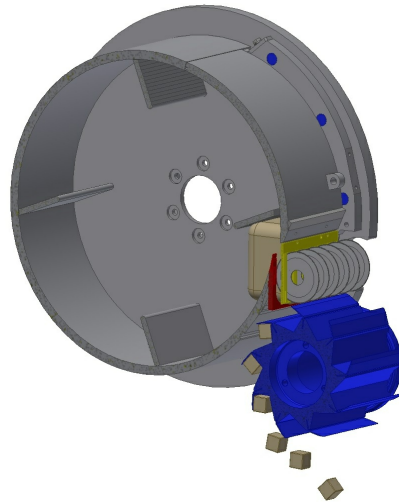
Cut shapes
Slices, strips and dices
Cut sizes
Flat slices: 1,60 mm | 0.063' - 25 mm | 0.984',
Crinkle slices: up to 25 mm | 0.984'.
Strip cutting: circular knife cuts: 3 mm | 0.118' - 60 mm
| 2.36', crosscut knife cuts: 3 mm | 0.118' - 65 mm | 2.56'.
Dices: flat cut: 3 mm | 0.118' to 25 mm | 0.984', crinkle cut: 7,10 mm | 0.28' - 16 mm | 0.63'
Capacity
from 150 kg | 331 lbs to 600 kg | 1,323 lbs / per mm / per hour depending on product, cut size & operating condition

APPLICATION SUMMARY

Vegetables
Beetroot, carrot, celeriac, chicory, cucumber, eggplant, endive, garden cabbage, gherkin, green cabbage, horseradish, kohlrabi, leek, mushroom, onion, parsnip, pepper, pumpkin, radish, red cabbage, rutabaga, squash, tomato, turnip, white cabbage, zucchini
Fruit
Apple, cantaloupe, mango (green), melon, papaya, pear, pineapple, peach, strawberry, watermelon and more.
Potatoes
Potato (slices, dices and French fries), sweet potato

CUTTING PRINCIPLE

The FAM Tridis™ 180 is a new tridimensional FAM dicer. It is specifically designed to help processors of fresh vegetables and IQF vegetables and fruits reach perfect cut quality at medium-high volumes. Its small footprint but rugged stainless steel design allow processors to dice a variety of soft and hard products.



A wide variety of cutting tools make slicing, strip cutting and dicing possible with only one machine.

First a slicing knife produces slices at the selected thickness. Next, the circular knife spindle cuts the slices into strips. Finally, the crosscut knife spindle cuts neat dices to the desired height.

The combination of three cutting tools allows a very high flexibility in the choice of cut sizes and shapes.

Cutting Trials

Worldwide, FAM is ready to advise you in one of its fully equipped test centres. You are invited to send us products for evaluation and you are most welcome to be present during the trials.

FAM nv

Neerveld 2
B-2550 Kontich - Belgium
t. +32 3 450 92 20
f. +32 3 450 92 50
e. info@fam.be

Contacts and Information

For a complete overview of our machines, applications, services and agents, please visit our website. FAM will be happy to respond immediately to your information request.

Member of  **Hifferman**
GROUP



FAM and Tridis are registered trademarks of FAM nv.
FAM is member of Hifferman Group

Your Local Contact

Summit Machinery Services

1 / 1-3 Eastspur CRT
VIC 3137 Kilsyth, Australia
Phone: +61(0)3 9761 6252
Fax: +61(0)3 9761 7252
E-mail: sales@summitms.com.au
Website: www.summitms.com.au
Ask for a trial or demonstration