

Tronics S3 Full Specification Pressure-Sensitive Labeller

TRONICS®

A DIVISION OF  **ALDUS**

Reliable & Simple

From the beginning, the Tronics S3 labeller was designed to be simple to operate, to provide repeatable changeovers, and to have accurate label placement for great product appearance. But best of all is its incredible reliability, which results in high production output well into the future.

The Tronics S3 labeller has been crafted like no other labeller in the industry.

Flexibility

Every label head on the S3 labeller comes standard with both vertical and horizontal axis tilt adjustments. This allows you to label a wide variety of products, including round, oval, flat sided, and tapered. And all from one system.

Zero Down Time Production

For high speed, high volume, non-stop production lines you need a labeller that will not stop your line for you to load more labels. The Tronics Zero Down Time Labeller is the solution. The labeller automatically swaps to a secondary roll of labels, without loss of production, while your operator replenishes the label rolls.

Touch Panel

- On-the-fly adjustment
- Simple one-button adjustments
- 100 Preset job memory
- 300° swivel for greater access
- Bottles/min and batch counts

Tilt Adjustments

- Vertical and Horizontal tilt
- Micro adjustments
- Max 8° movement

A Labeller That Can GROW With You

All Tronics S3 labellers are of a modular design. This gives you the ability to add or remove modules in the field without the need to purchase another labelling system, because we know that your business will change in the future.

Synchronisation

All Tronics S3 labeller modules contain individual motors that are fully synchronised with the main product conveyor. This ensures consistently accurate label placement regardless of changing production speeds. Speed up the conveyor and all the modules speed up at the same rate.

Touch Panel

Forget about having to navigate through annoying and confusing menu screens. All Tronics labeller control panel adjustments are only one touch away, so many on the fly adjustments are simple and instantaneous. And because the touch panel swivels, adjustments can easily be made from either side of the machine. The touch panel on the S3 labeller stores up to 100 jobs, which makes recalling previous jobs both simple and fast.

Labelling Head

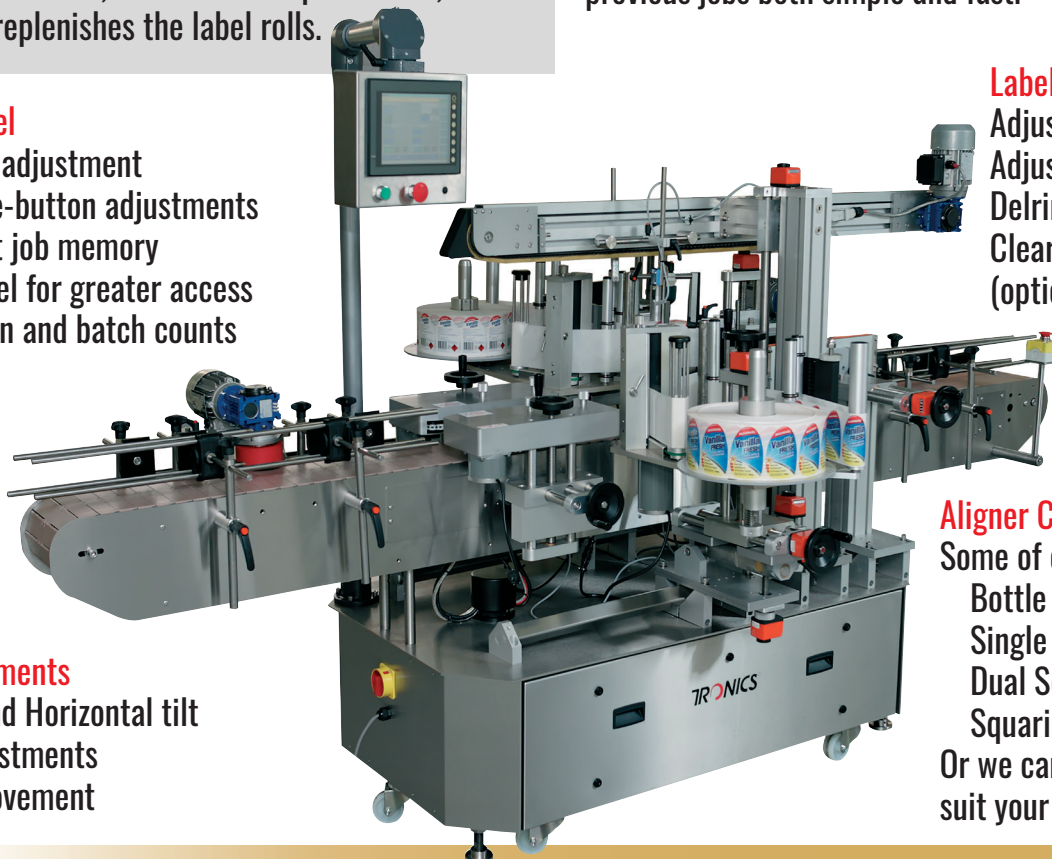
- Adjustable brush assembly
- Adjustable web guides
- Delrin/Stainless peel plate
- Clear label gap detection (optional)

Aligner Chains Module Shown

Some of our modules include:

- Bottle Separator
- Single Scroll (round bottles)
- Dual Scroll (oval bottle)
- Squaring Wheels

Or we can develop modules to suit your needs



Tronics S3

Full Specification

Pressure-Sensitive Labeller

TRONICS®

A DIVISION OF  **ALDUS**

Label Specifications

Label Min Thickness: 80 micron
Label Reel Core Size: 76mm inside diameter
Label Reel Outside Diameter: 335mm (std)
Label Reel Outside Diameter Max: 500mm (opt)
Label Min Size: Vertical 15mm/Horizontal 20mm
Label Max Height: 110mm/210mm/260mm
Label Gap Min Size: 2.5mm

Labelling Head Specifications

Dispensing Speed Min: 5m/min (opt)
Dispensing Speed Min: 25m/min (std)
Dispensing Speed Max: 60m/min (opt)
Label Stop Accuracy ± 1 mm
Stepper Motor Drive
Missing Label Detection (opt)
Low-level Roll Detection (opt)
Clear Label Gap Sensor (opt)
Label Verification (opt)

Other Options

Warning Beacon
Coder - Thermal or Inkjet
Eject System

Modules

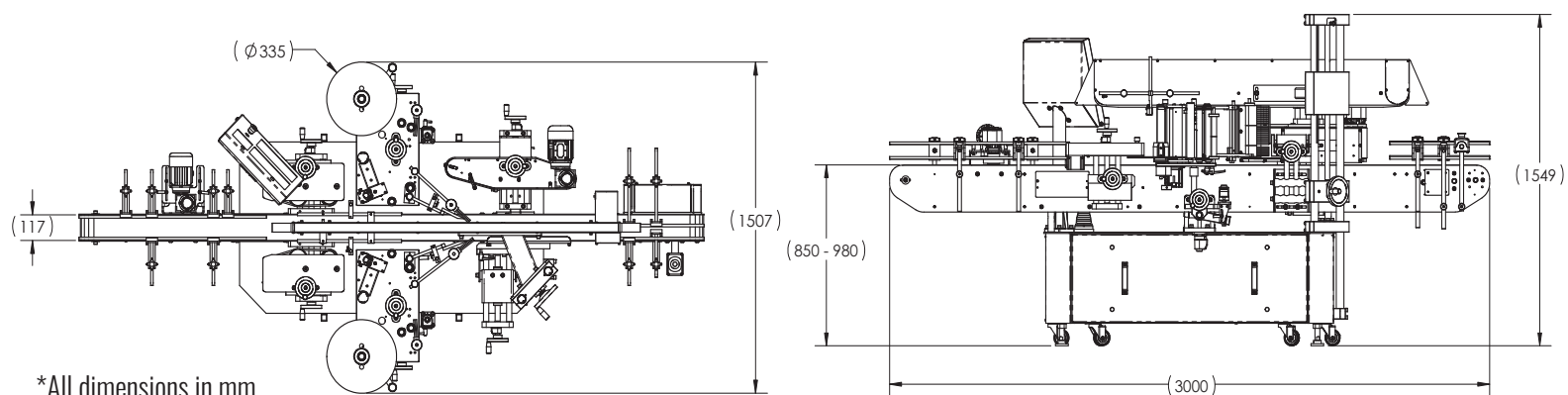
Wrap Module (80% wrap or less)
Wrap Vacuum Module (80% wrap or greater)
Orientation System (Poison Labeller)
Overhead Conveyor
Single & Dual Scroll/Product Positioning (round and oval bottles)
Aligner Chains
Squaring Wheels
Bottle Separator
Crash Gate System
Felt Wipes
Secondary Impression Rollers
Top and Bottom Label Placements
Side Grip Transfer System

Conveyor System

Conveyor Speed: 6m–25m/min (std)
Conveyor Material: Plastic/Stainless/Belt/Roller
Conveyor Widths: 105mm/190mm/250mm (std)
Conveyor with Pucks (non-std)
Conveyor Stepper Drive (std)



Wide Variety of Product Configurations



*All dimensions in mm

Tronics Pty Ltd

1 Rhodes Street, West Ryde NSW 2114 Australia
1300 018 330 | sales@aldustronics.com.au

WWW.TRONICS.COM.AU

100% DESIGNED & MADE IN AUSTRALIA

2021 02 22_v1