

# MANUAL HANDLING & STORAGE

---



*PFG GROUP*

**CREATORS OF DURABLE PRODUCTS FOR HARSH ENVIRONMENTS**

Creating durable products that will transform your business is what we do best

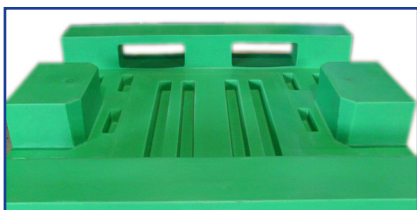
PFG Group are an award winning Australian company whose dedicated and highly skilled team, partner with customers to solve problems to complex infrastructure and plant challenges, generally using engineered polymers and other composite materials. From our many Australian facilities, we service customers who operate in the industrial, mining, water, maritime, aquaculture and defence industry sectors, and distribute globally.

With over forty years of history producing innovative solutions to a wide range of industries, locally, nationally and around the world, we have a dedicated sales, technical and engineering team who are experts in the field.

Our head office is based in Tasmania, Australia with manufacturing centres of excellence in Victoria, South Australia and Tasmania with strategic distribution partners in Japan, Norway, Chile and New Zealand.



# DURABLE AND STRONG



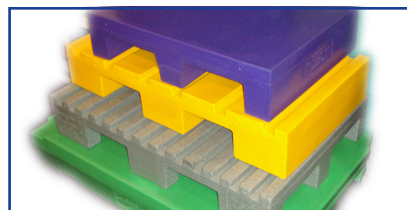
## HYGIENIC

Our pallets and bins are made from food grade polyethylene which is tough, non-absorbent and are easily washed and disinfected. There are no "nooks or crannies" which may harbour dirt and bacteria. This makes it ideal for the manufacture and storage of food and pharmaceutical products.



## CLEVER DESIGN

Our plastic products are specifically designed to suit multiple requirements. Beam locking points, hand grips, and lipped edges are some of our many innovations. Most pallets include a fully encased metal membrane for strengths whilst many of our bins are stackable and nestable.



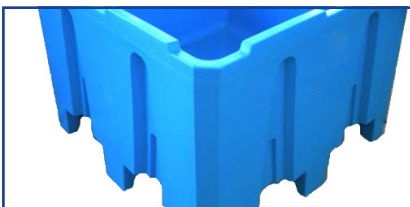
## CONDUCTIVE RESIN

Polyethylene is a product that can be a good electrical insulator which will not suit some requirements. We have access to a grade of material which provides excellent general mouldability and impact strength, whilst also dissipating anti-static charge and providing conductivity.



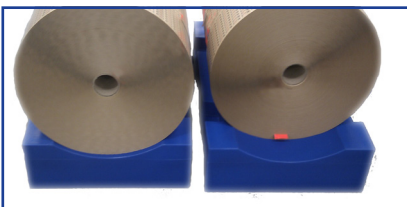
## IDEAL FOR RACKING

The superior strength of our pallets ensure that our load capacities meet most requirements both for Dexion style beam racking as well as drive-in rackings. Many of our pallets designed for beam racking incorporate locking racks ensuring your pallets hold position.



## FORKLIFT ENTRY

Our range of products includes 2 and 4 way entry systems. Our 2 way entry has an open access making it ideal for the easy use of pallet trolleys. Our 4 way access includes separate fork pockets for safety. This provides the flexibility in production and warehouse application.



## MINIMISE STOCK DAMAGE

Our products are maintenance free with no ongoing repairs necessary. The smooth finish of our bins helps with, cleanliness, security, quality assurance and transfer. Timber splinters and protruding nails will become an issue of the past.



## LONG LIFE

Our products are built from top quality materials and we anticipate each item will have a useful life of between ten and fifteen years, providing they are handled properly. Our polyethelene is sourced from the gas fields of South Australia and processed in a plant in Botany NSW. It is truly all Australian.



## SOLVING YOUR PROBLEMS

As a manufacturer, we have the ability to create custom designed products. Please feel free to contact us to discuss any project should our extensive range not meet your needs.



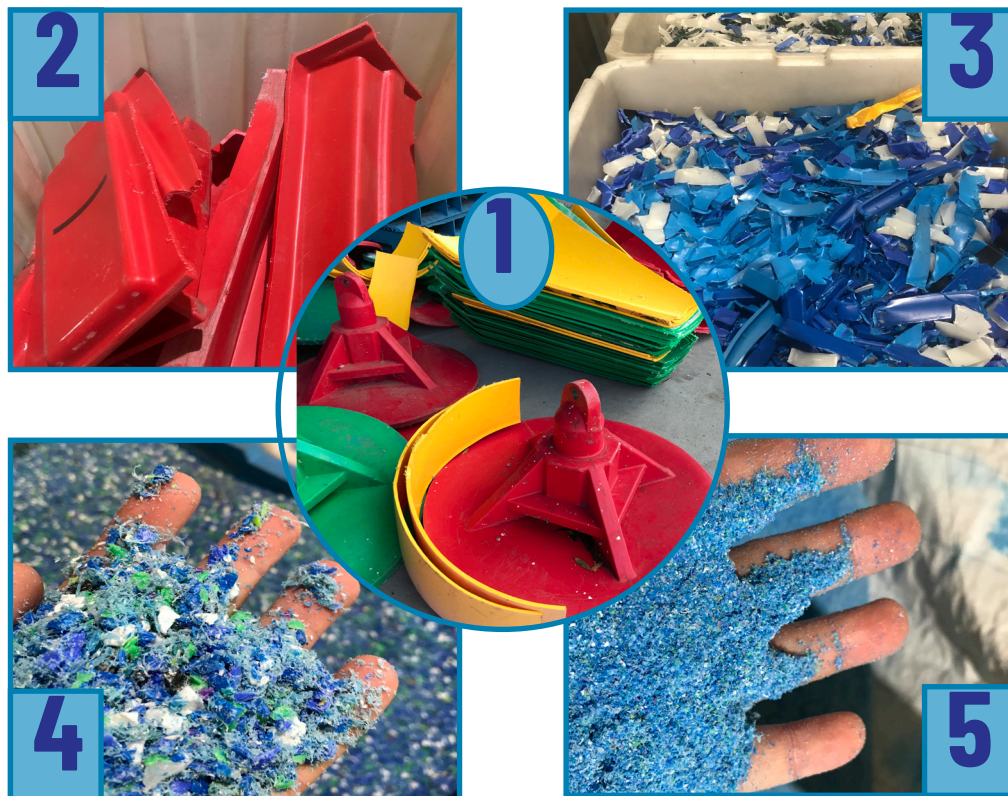
## FULL RANGE OF COLOURS

Our plastic products are available in an extensive range of UV stabilised colours. You may wish to use your company's standard colours or choose different colours to suit various sections of your plant or warehouse.



## Recycling our Product

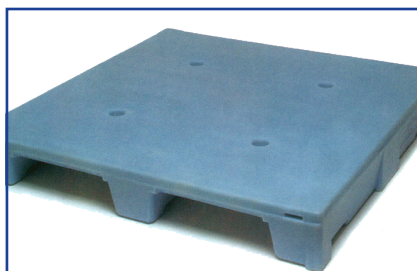
PFG Group are **CREATORS OF DURABLE PRODUCTS FOR HARSH ENVIRONMENTS**. Many of these products are made from polyethylene, the most commonly used plastic in the world today. Polyethylene is a material which can be ground back into reusable material, 100% recyclable. PFG Victoria can provide this in-house service for its customers to ensure that not only do you get a strong and durable item, you also have the option of a ready made disposal system at the end of its life.



## Process

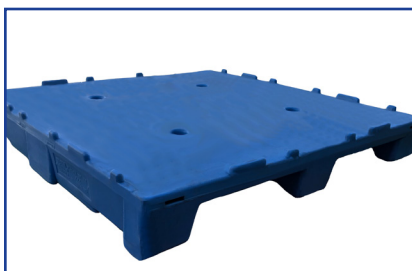
1. Customers end-of-life product returned to PFG Victoria site for regrinding. Product is cut down into manageable sizes and non plastic material is removed.
2. PFG also incorporates post production waste material streamlining internal processes and using all raw product.
3. The waste is then run through a shredder to reduce down to smaller chunk size pieces.
4. These pieces then go through our granulator to reduce down to 8mm granules.
5. The granules will then pass through the grinder producing the powder needed to go back into the manufacturing process.

# PALLETS - AUSTRALIAN STANDARD



**KTAF 1160 (FLAT)**

- Smooth flat top
- 1160mm x 1160mm x 150mm
- 2 way entry weighs 32kg
- Steel re-inforced
- Beam racking with locks
- 6 tonne static load
- 1.5 tonne beam racking load
- Stackable



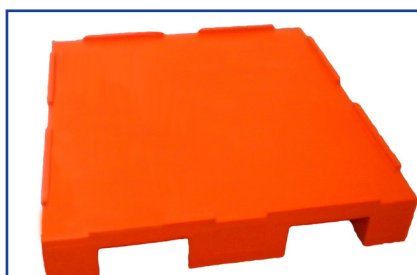
**KTAF 1160 (LIPPED)**

- Smooth top with lipped edges
- 1160mm x 1160mm x 150mm
- 2 way entry weighs 32kg
- Steel re-inforced
- Beam Racking with locks
- 6 tonne static load
- 1.5 tonne beam racking load
- Stackable



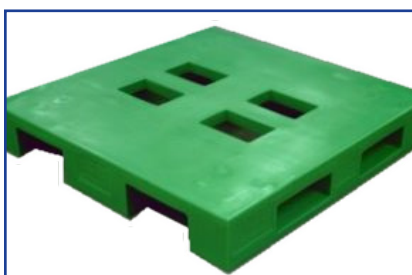
**KAFW 1160**

- Smooth flat top
- 1160mm x 1160mm x 170mm
- 4 way entry weighs 32kg
- Steel re-inforced
- Drive-in racking
- 6 tonne static load
- 1.5 tonne drive-in racking load
- Stackable & conveyable



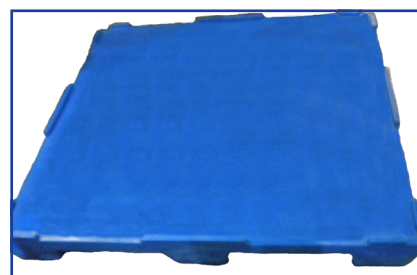
**KAFWL (LIPPED)**

- Smooth top with lipped edges
- 1160mm x 1160mm x 190mm
- 4 way entry weighs 32kg
- Steel re-inforced
- Drive-in racking
- 6 tonne static load
- 1.5 tonne drive in racking load
- Stackable & conveyable



**KAFWV (VENTED)**

- Smooth top with 4 vents
- 1160mm x 1160mm x 170mm
- 4 way entry weighs 32kg
- Steel re-inforced
- suitable for Blast Freezers
- 6 tonne static load
- 1.5 tonne drive in racking load
- Stackable & conveyable



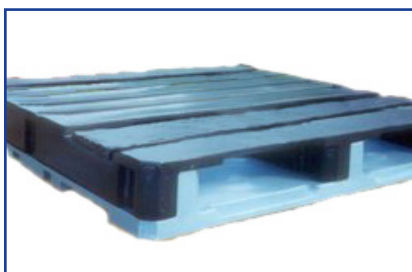
**CSLL 1160**

- Smooth top with lipped edges
- 1160mm x 1160mm x 000mm
- 2 way entry weighs 36kg
- Steel re-inforced
- Beam & drive-in racking
- 6 tonne static load
- 1.5 tonne beam racking load
- Stackable



**KPT 1160**

- Castellated flat top
- 1160mm x 1160mm x 180mm
- 2 way entry weighs 42kg
- Steel re-inforced
- Beam & drive-in racking
- 6 tonne static load
- 1.8 tonne beam racking load
- Stackable



**KDF 1160**

- Castellated flat top & bottom
- 1160mm x 1160mm x 180mm
- 2 way entry weighs 48kg
- Steel re-inforced
- Drive-in racking
- 6 tonne static load
- 2 tonne drive-in racking load
- Stackable & conveyable



**CAD 1170**

- Smooth flat top
- 1170mm x 1170mm x 180mm
- 4 way entry weighs 31kg
- Steel re-inforced
- Beam and drive-in racking
- 6 tonne static load
- 1.0 tonne drive-in racking load
- Stackable & suits AGV

# PALLETS - EUROPEAN STANDARD



**KTF 1208 (FLAT)**

- Smooth flat top
- 1200mm x 800mm x 150mm
- 2 way entry weighs 21kg
- Steel re-inforced
- Beam racking with locks
- 6 tonne static load
- 1.5 tonne beam racking load
- Stackable



**KTL 1208 (LIPPED)**

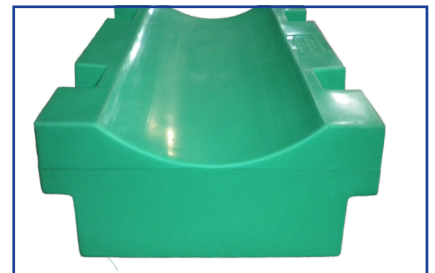
- Smooth top with lipped edges
- 1200mm x 800mm x 150mm
- 2 way entry weighs 21kg
- Steel re-inforced
- Beam racking with locks
- 6 tonne static load
- 1.5 tonne beam racking load
- Stackable



**KTF 1210**

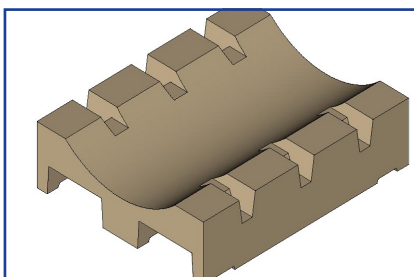
- Smooth flat top
- 1200mm x 1000mm x 150mm
- 2 way entry weighs 25kg
- Steel re-inforced
- Beam racking with locks
- 6 tonne static load
- 1.5 tonne beam racking load
- Stackable

## PALLETS - SCALLOPED



**KRP 859**

- Scalloped top
- Suits 660mm diameter reel
- 800mm x 590mm
- 200mm height
- 10kg weight
- 2 way entry
- Aluminium re-inforced
- Rebates for manual lifter



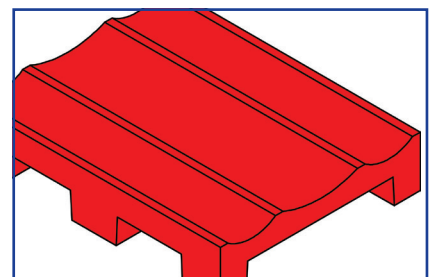
**KRP 1080**

- Scalloped top
- Suits 800mm diameter reel
- 1010mm x 820mm
- 270mm height
- 22kg weight
- 2 way entry
- Steel re-inforced
- Locking lugs for Beam racking



**KRP 1100**

- Scalloped top
- Suits 1000mm diameter reel
- 1090mm x 1090mm
- 250mm height & 31kg weight
- 2 way entry
- Steel re-inforced
- Locking lugs for Beam racking
- Stackable & includes handgrips

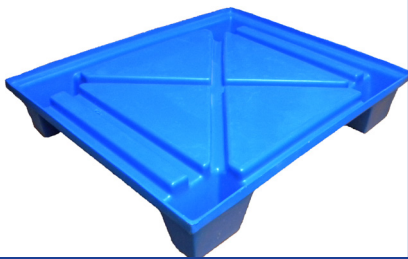


**KMRP**

- Multiple scalloped top
- Suits 1 x 750mm diameter reel & 2 x 300mm diameter reels
- 1000mm x 790mm
- 200mm height
- 15kg weight
- 4 way entry
- Aluminium re-inforced

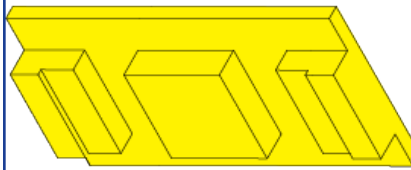


# PALLETS - VARIED



**RB 730**

- Shape moulded top
- 730mm x 880mm x 150mm
- 4kg weight
- 4 way entry
- Single skin - no reinforcement
- Nestable



**KB 600**

- Smooth flat top
- 600mm x 1160mm x 150mm
- 2 way entry weighs 15kg
- Steel re-inforced
- Beam Racking with locks
- 0.5 tonne static load
- 0.5 tonne beam racking load



**AB 760**

- Smooth flat top
- 760mm x 1050mm x 150mm
- 2 way entry weighs 21kg
- Steel re-inforced
- Beam racking with locks
- 0.5 tonne static load
- 0.5 tonne beam racking load
- Stackable



**CCLL 7563**

- Smooth flat top
- 750mm x 625mm x 130mm
- 9kg weight
- 2 way entry
- Aluminium re-inforced
- Stackable



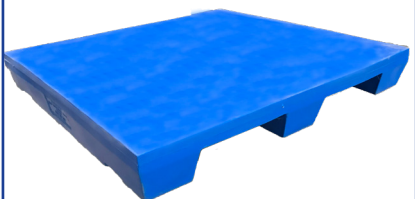
**KTF 1000**

- Smooth flat top
- 1000mm x 1000mm x 150mm
- 21kg weight
- 2 way entry
- Steel re-inforced
- 3 tonne static load
- Stackable



**KTL 1220**

- Smooth top with lipped edges
- 1220mm x 1220mm x 155mm
- 2 way entry weighs 35kg
- Steel re-inforced
- Beam racking with locks
- 6 tonne static load
- 1.5 tonne beam racking load
- Stackable



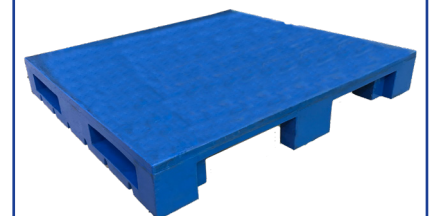
**KTF 1220**

- Smooth flat top
- 1220mm x 1220mm x 155mm
- 2 way entry weighs 34kg
- Steel re-inforced
- Beam racking with locks
- 6 tonne static load
- 1.5 tonne beam racking load
- Stackable



**KTL 1240**

- Smooth top with lipped edges
- 1240mm x 1240mm x 155mm
- 2 way entry weighs 37kg
- Steel re-inforced
- Beam racking with locks
- 6 tonne static load
- 1.5 tonne beam racking load
- Stackable



**CE 1320**

- Smooth flat top
- 1320mm x 1200mm x 180mm
- 4 way entry weighs 39kg
- Steel re-inforced
- Drive-in racking
- 6 tonne static load
- .6 tonne drive-in racking load
- Stackable & conveyable

# PALLETS - PRINTING



**H. 720**

- Castellated or smooth flat top
- 720mm x 515mm
- 165mm high
- 10kg weight
- 2 way entry
- Steel re-inforced



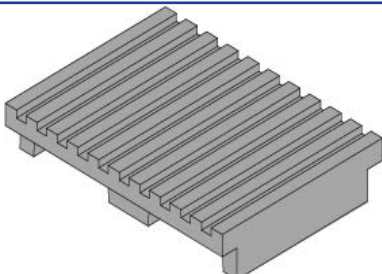
**M. 770**

- Smooth flat top
- 770mm x 545mm
- 150mm high
- 11kg weight
- 2 way entry
- Steel re-inforced



**H. 800**

- Smooth flat top
- 800mm x 620mm
- 160mm high
- 10kg weight
- 2 way entry
- Aluminium re-inforced



**KP 859**

- Castellated top
- 800mm x 590mm
- 165mm high
- 9kg weight
- 2 way entry
- Aluminium re-inforced



**KFP 859**

- Smooth flat top
- 800mm x 590mm
- 150mm high
- 8kg weight
- 2 way entry
- Aluminium re-inforced



**JSM 910**

- Castellated top
- 910mm x 650mm
- 160mm high
- 12kg weight
- 4 way entry
- Aluminium re-inforced



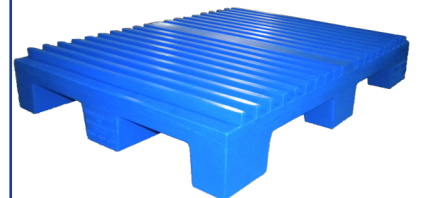
**H. 1030**

- Castellated top
- 1030mm x 720mm
- 165mm high
- 12kg weight with Ali frame
- 4 way entry
- Steel or Aluminium re-inforced



**CH 1060**

- Castellated top
- 1060mm x 620mm
- 165mm high
- 18kg weight
- 4 way entry
- Steel re-inforced

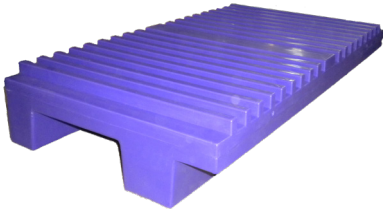


**KBA 106**

- Castellated top
- 1060mm x 760mm
- 170mm high
- 20kg weight with Steel frame
- 4 way entry
- Steel or Aluminium re-inforced



# PALLETS - PRINTING



**KBA 106/578**

- Castellated top
- 1060mm x 578mm
- 173mm high
- 13kg weight
- 4 way entry
- Aluminium re-inforced



**M. 1090**

- Castellated top
- 1090mm x 770mm
- 165mm high
- 21kg weight
- 4 way entry
- Steel re-inforced



**H. 1260**

- Castellated top
- 1260mm x 850mm
- 165mm high
- 17kg weight
- 4 way entry
- Aluminium re-inforced



**MP 1350**

- Castellated top
- 1350mm x 950mm
- 165mm high
- 28kg weight
- 4 way entry
- Steel re-inforced



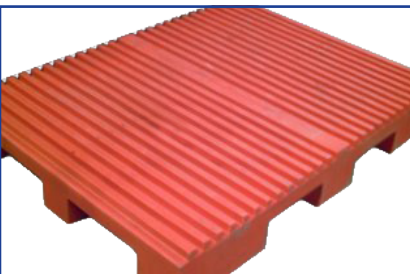
**AC 1300**

- 4 way Castellated top
- 1300mm x 1020mm x 165mm
- 20kg weight
- 4 way entry
- Aluminium re-inforced
- Handgrips



**AC 1350**

- Castellated top
- 1350mm x 1020mm
- 165mm high
- 35kg weight
- 4 way entry
- Steel re-inforced



**R. 1440**

- Castellated top
- 1440mm x 1030mm
- 165mm high
- 33kg weight
- 4 way entry
- Steel re-inforced



**SP 1690**

- Castellated top
- 1690mm x 1065mm
- 165mm high
- 39kg weight
- 4 way entry
- Steel re-inforced

# STORAGE BINS & HOPPERS



**PRODUCE (VEGIE) BIN**

- 1150mm x 1000mm
- 540mm high
- 400 litres
- 2 way forklift entry
- Stackable
- Nestable up to 8 high for transport



**KB 650**

- 1165mm x 1165mm
- 780mm high
- 650 litres
- 4 way forklift entry
- Stackable
- Optional Lid



**TOP BIN**

- 1160mm x 1160mm
- 950mm high
- 700 litres
- 4 way forklift entry
- Optional lid



**KHB 980 HOPPER**

- 1165mm x 1165mm
- 1370mm high
- 980 litres
- 4 way forklift entry
- Stackable with optional Lid
- Optional single skin lid
- Optional insulated lid



**UNIVERSAL BIN**

- Bin 1130mm x 1130mm
- Bin height is 970mm
- Base 1150mm x 1150mm
- Base height 150mm
- Nestable
- Optional Lid



**DROP SIDE BIN**

- 1160mm x 1160mm
- 1300mm high
- 1160 litres
- 4 way forklift entry



**KB 1160**

- 1165mm x 1165mm
- 1300mm high
- 1160 litres
- 4 way forklift entry
- Stackable only with Lid
- Optional Lid



**ULTRA BIN**

- 1160mm x 1160mm
- 1350mm high
- 1300 Litres
- 4 way forklift entry
- Optional lid



**KB 1600**

- 1120mm x 1120mm
- 1585mm high
- 1600 litres
- 2 way forklift entry
- Optional lid

# INSULATED BINS & STORAGE TOTE



**680 LITRE**

- External 1230mm x 1030mm
- Internal 1165mm x 960mm
- External height is 780mm
- Internal height is 600mm
- 70kg
- 4 way forklift entry
- stackable and easy to clean
- lock down lid
- insulated both bin & lid



**1000 LITRE**

- External 1470mm x 1165mm
- Internal 1400mm x 1090mm
- External height is 860mm
- Internal height is 725mm
- 100kg
- 4 way forklift entry
- stackable and easy to clean
- lock down lid
- insulated both bin & lid



**PALLET TOTE TRAY 1160**

- 200 Litres
- 1160mm x 1160mm
- 300mm high
- Can include company logo or identification

## COLLAPSABLE BINS



**COLLAPSABLE TOTE BOX**

- 1140mm x 570mm
- 570mm high
- collapses to 225mm high
- Corflute fold down sides
- 2 way entry



**FLEXI BIN 1.0M<sup>3</sup>**

- 1160mm x 1160mm
- 1100mm high
- 105kg
- 2 way forklift entry
- optional lid



**FLEXI BIN 1.5M<sup>3</sup>**

- 1160mm x 1160mm
- 1620mm high
- 120kg
- 2 way forklift entry
- Optional lid
- Optional forklift rails





***PFG GROUP***

Tel +61 (3) 5135 3900 | [adminvic@pfg-group.com.au](mailto:adminvic@pfg-group.com.au) | [www.pfg-group.com.au](http://www.pfg-group.com.au)  
87 - 93 Tramway Road Morwell Victoria 3840