



# BORA

Horizontal Flowwrap Machine



# BORA:

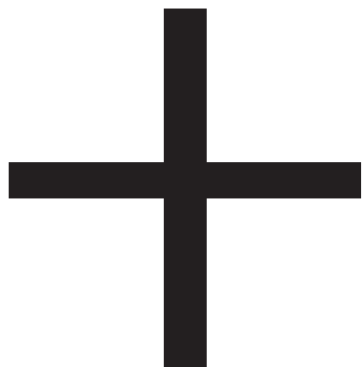
## Horizontal Flowrap Machine

PFM Bora is a full servo horizontal wrapping machine to make pillow-pack bags from a flat reel of wrapping material.



## BENEFITS:

# BORA



### **Speed and flexibility**

PFM Bora can achieve up-to 200 p.p.m. with complete flexibility in terms of product changeover.

### **Product changeover**

Mechanical and electronic machine settings can be changed in a matter of minutes.

### **Perfect integration**

The PFM Bora can be easily integrated with automatic feeding lines to handle a wide range of products.



# FEATURES:

## Standard build features

- 2 meters long infeed conveyor complete with interchangeable FDA approved plastic pushers. Standard version with production flow from left to right.
  - Adjustable forming box (Fixed version as optional).
  - 3 sets of fin seal rollers (film pulling, sealing and folding) with automatic opening of the sealing set.
  - Transverse sealing unit with 1-up or 2-up rotary crimpers depending upon speed and product sizes.
- Separate temperature control for lower and upper crimpers.
- Pneumatic wrapping material reel holder with fine adjustment.
  - 3 sets of fin seal rollers (film pulling, sealing and folding)
  - Max film width 500 mm.
  - Product contact parts manufactured in Stainless Steel AISI 304.
  - Main frame painted white RAL 9010.
  - 1 metre long discharge conveyor.

The Motion Controller automatically adjusts:

- The sealing dwell time;
- Product synchronization;
- Bag length;
- Film print registration;
- Date coder print position;
- Sealing temperatures at each product changeover.

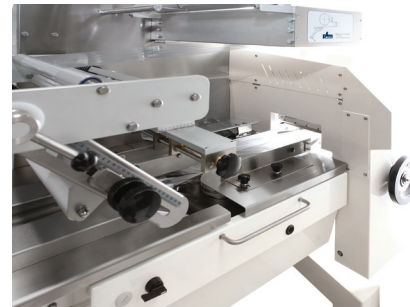
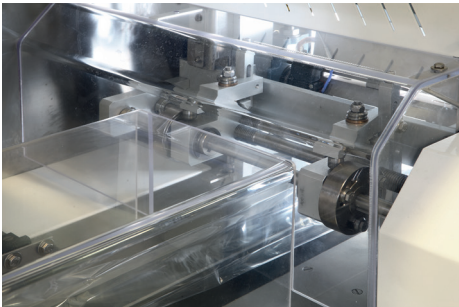
All machine settings and programs are accessible via a colour touch screen HMI.

The electronic control also enables the use of No Product-No Bag and Misplaced product functions (optional).

## Main options

PFM Bora is a full Servo, automatic wrapping machine that includes a dedicated Axis Motion Controller which synchronizes the motors that drive:

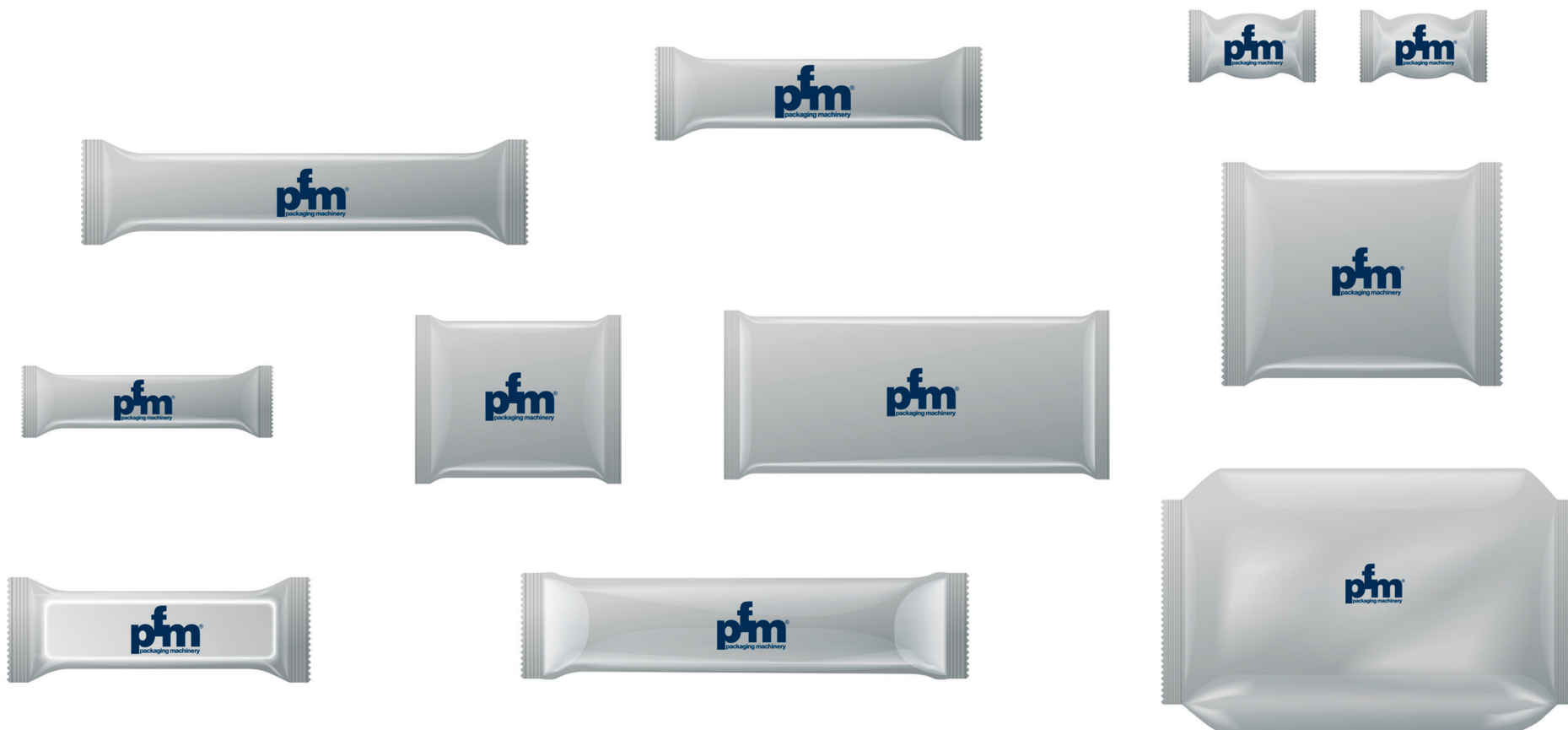
- Additional mt. on infeed Conveyor;
- Wrapping material power feed roll;





# PACK SAMPLES:

# BORA



# TECHNICAL DATA:

Product length mm max 450

Product width mm max 230

Product height mm max 80

Film reel width mm max 500

Reel outer diameter mm 350

Crimper width mm max 250

Mechanical  
speed prod/min 200 products

Transverse sealing system rotary

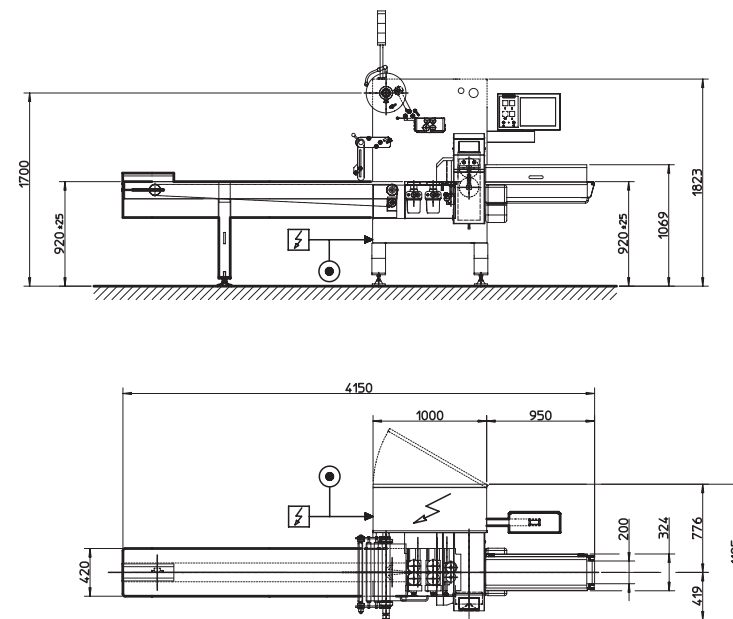
Power supply 400 V-3 Ph+N+G, 50 Hz

Weight Kg 880

Power consumption Kw 9

Sealable wrapping materials: hot or cold sealable materials such as polypropylene, laminated or coextruded, Barrier films; Polyethylene.

PFM reserve the right to make modifications without prior notice.



TECH AREA ACCESS  
ACCESSO AREA TECNICA



[www.pfm.it/bora](http://www.pfm.it/bora)

