

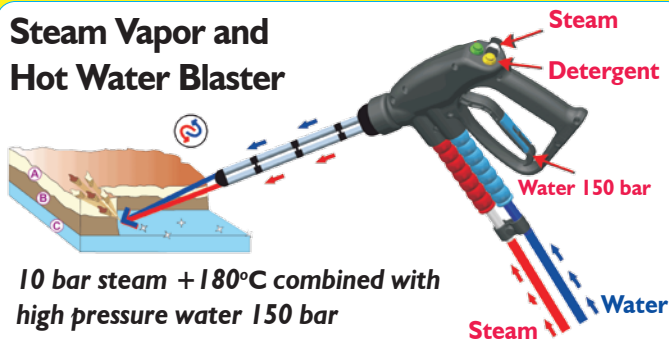
## STEAM PRESSURE **Makes cleaning quicker!**



Combining the power of +180°C super heated 94% dry steam and 50-100°C hot water blasting at up to 150 bar pressure; the STEAM PRESSURE can clean and degrease hard surfaces in seconds.

**NO SCRUBBING  
NO CHEMICALS**

### Steam Vapor and Hot Water Blaster



10 bar steam + 180°C combined with high pressure water 150 bar



Blast food residues off processing equipment and preparation areas with 150 bar high pressure water and then thermally sanitise using +180°C super heated 94% dry steam system.



Degrease and remove grime from all mechanical workshop surfaces or engineering machinery in seconds. With the STEAM PRESSURE there is no more scrubbing or degreasers.



The STEAM PRESSURE is ideal for use in environments like abattoirs where the high pressure water rids surfaces of meat/bone residue in seconds and the +180°C melts fats and sanitises.

THREE PHASE HYDRO SYSTEM

THREE PHASE STEAM GENERATOR



#### Technical Data

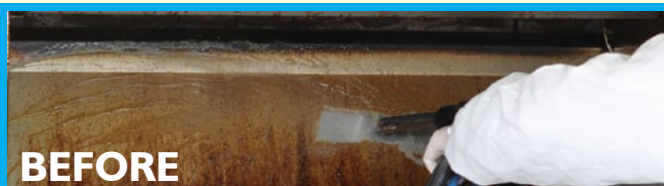
Stainless steel Boiler	AISI 304
Body	AISI 304 (BA)
Pressure	30 - 150 bar / 3-15 MPa
Water flow	From 2 to 11 l/min
Temperature	From 50° to 100° C
Stainless steel Boiler	AISI 304
Body	AISI 304 (BA)
Boiler volume	11 - 12,5 - 14 l
Water tank	50 l
Direct Water Connection	YES
Detergent tank	20 l
Operating pressure	10 bar
Steam T°	180° C
Detergent T°	90-145° C
Power supply	400 V 3~ - 50/60 Hz
Weight	114 Kg



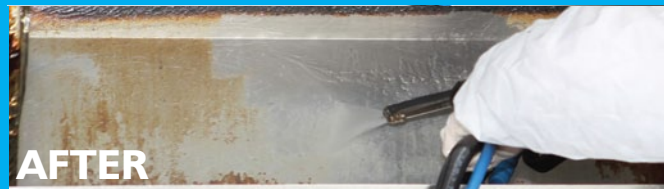
**BEFORE**



**AFTER**



**BEFORE**



**AFTER**



### JETVAC<sup>Maxi</sup>

Powerful 240v continuous steam generator with detergent injection and wet/dry vacuum. Large water capacities and extra power make the Maxi ideal for sizeable commercial facilities with mains power. Available in 6 Bar or 8 Bar models.



### STEAMBOX<sup>Mini</sup>

The most compact of the industrial range featuring water tight IPX5 welded stainless steel chassis, automatic refilling and detergent injection. Powerful 8 Bar 10A - 10 bar 15A Models both with a 5L Boiler and total 11L water capacity. Optional vacuum model.



### JETVAC<sup>Major</sup>

Extra large 37Lt capacity steam generator with detergent injection and wet/dry vacuum. Features automatic powerful 12000w boiler generating 260g / minute of 180°C dry steam makes short work of all cleaning issues. Available in 240V 15A or in 3 phase 10A or 20A models.



### STEAMBOX<sup>Pro</sup>

The Steambox Pro features water tight IPX5 welded stainless steel chassis, wet & dry vacuum automatic refilling and detergent injection. 10 Bar model available in 15A 240V or 3 Phase with a large 7L boiler and 35L total water/ detergent capacity. Also available with direct water supply.



### STEAMBOX<sup>Industrial</sup>

The largest steam machine in our range featuring water tight IPX5 welded stainless steel chassis, wet & dry vacuum automatic refilling and detergent injection. This 3 Phase 10 bar model has a massive 14L boiler with a total 54L water/ detergent capacity. Can produce up to 970 g steam / minute. Also available with direct water supply.



#### IDEAL FOR:

- Food Processing Facilities
- Wineries/Bottling Facilities
- Abattoirs/Meat Processing
- Engineering Plants

PHOTOCOPY AND FAX BACK - Aus Fax : 03 9482 4940 NZ Fax: 09 925 2072

Company \_\_\_\_\_

Name (Mr Ms Mrs Sr) \_\_\_\_\_

Address \_\_\_\_\_

Suburb \_\_\_\_\_ Post Code \_\_\_\_\_

Telephone ( ) \_\_\_\_\_

Email \_\_\_\_\_

Please provide me with:

- ☐ Quote
- ☐ More Technical Information
- ☐ On Site Demonstration
- ☐ Video Information

**Tecnovap Australia & NZ**  
**8/177 Beavers Road**  
**Northcote VIC 3070**  
**AUS: 03 9482 4900**  
**NZ: 09 889 2750**



INDUSTRIAL  
RANGE

# Engineered for the toughest cleaning jobs

Meet our ultimate industrial steam cleaners. Our Italian-made, industrial steam cleaners provide maximum power and durability to blast away dirt, grease and grime found in industrial environments.

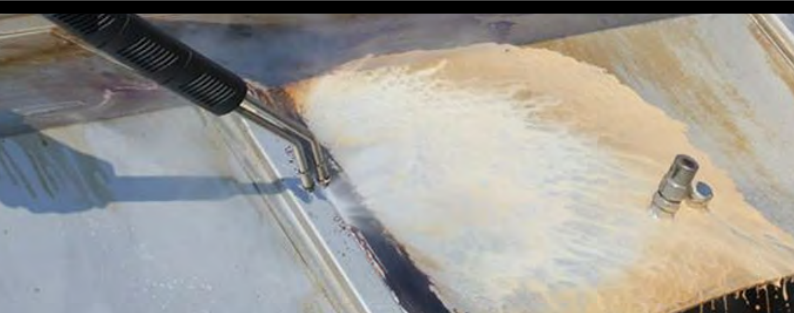




## “Superheated” Dry Steam Vapour

Not your average steamer.

Steam is produced at a high temperature of +180 degrees Celsius providing a “deep clean”. Leave surfaces dry, eliminate slips and falls and protect equipment from rust due to our steam vapour’s 5% moisture content.



## Powerful Multi-Cleaner

Clean, degrease and disinfect industrial surfaces. Combining the power of steam vapour, hot water and detergent injection you can disintegrate and remove fat, grease, food residue and dirt on contact.

## 24/7 Continuous steam

Simply “connect and go”. Connect the water feed directly into the steam cleaner - no downtime, achieve continuous steam power and higher productivity. Continuous operation is essential to industrial cleaning.



## Chemical-free, minimal water use

Let the power of steam vapour do all the work. Sanitise any surface, tool and machine and eliminate chemical costs and significantly reduce water usage.

## Versatile Industrial Strength Tools

A tool for every job. Our robust and durable accessories perform multiple industrial cleaning applications including machinery, piping, factory and floor cleaning.



## A Mind of Its Own

The most advanced digital control panel features a unique timer allowing for your machine to automatically “wake up” and operate by itself. The easy-to-use control panel also features digital temperature reading, steam pressure, water connection indicator.

## Self Cleaning Powerhouse

At the heart of every great machine is the boiler. The boiler automatically shakes off and breaks up dirt to self clean. It is built to respect the strictest pressure vessel codes and is virtually indestructible.





# What our industrial steamers do

To book an on-site demonstration of one of our industrial-grade steam cleaners, email [info@duplexcleaning.com.au](mailto:info@duplexcleaning.com.au) or call us 1800 622 770.

## Equipment



## Floors



## Walls



## Conveyor Belts





# Our Technology



① Electric power switch regulator

② True Temp Technology:  
Consistently high steam temperature

③ Electronic console with: thermometer, pressure gauge, hour meter, "CALC" advise for boiler cleaning.

④ Trolley: Stainless steel AISI 304

⑤ Tecnovap Technology: Stainless steel AISI 304 boiler welded with TIG, dry steam

⑥ Multi-safe Protection System:  
Total protection

⑦ Interchangeable heating element:  
28 W/cm<sup>2</sup>

⑧ Detergent pump

⑨ Water pump

⑩ Hot water injection

⑪ Min - Med - Max  
steam valves

⑫ Detergent tank: 14 l

⑬ Water tank: 36 l

# Geyser 1 10 Bar Accessories



## Hoses

5 mt	J7105W12
8 mt	J7108W12
10 mt	J7110W12
15 mt	J7115W12

## Lances



100mm	7100011
400mm	7100111
800mm	7100121
1200mm	7100131

## Nozzles



7,2kW 2 mm	UG71312
10,8kW 2,5 mm	UG71311
14,4kW 2,9 mm	UG71411
21,6kW 3,4 mm	UG71511
28,8kW 3,75 mm	UG71611
36.0kW 4mm	UG71711

## Window cleaner with diffuser



250mm	7002512
350mm	7003512
450mm	7004512

## Steam brushes with bristles



250mm	7000252V1
350mm	7000352V1
450mm	7000452V1



Flat nozzle 1cm UG00052



Stainless Steel 1207002  
Brush T50



Stainless Steel 1200002  
Scrubber brush



Stainless Steel 7000012  
Flat Nozzle with scraper



Diffuser 8cm for lance 7200122



Lance with brush connection 7200112



Water softener cartridge FL00009  
with resins for medium water consumption



Water softener cartridge FL00008  
with automatic regeneration of resins through sodium chlorite



Stainless Steel 7203512  
Brush 3,5 cm



Nylon Brush 7203522  
3,5 cm



Brass Brush 7203532  
3,5 cm



Stainless Steel 7206612  
Brush 6 cm



Nylon Brush 7206622  
6 cm



Brass Brush 7206632  
6 cm



Stainless Steel 7210612  
Brush 10 x 6 cm



Nylon Brush 7210622  
10 x 6 cm



Brass Brush 7210632  
10 x 6 cm

# Geyser 2 10 Bar / 150 Bar Water/Steam



## Hoses

5 mt	J7105W12
8 mt	J7108W12
10 mt	J7110W12
15 mt	J7115W12

## Lances



100mm	7100011
400mm	7100111
800mm	7100121
1200mm	7100131

## Nozzles



7,2kW	2 mm	UG71312
10,8kW	2,5 mm	UG71311
14,4kW	2,9 mm	UG71411
21,6kW	3,4 mm	UG71511
28,8kW	3,75 mm	UG71611
36.0kW	4mm	UG71711

## Window cleaner with diffuser



250mm	7002512
350mm	7003512
450mm	7004512

## Steam brushes with bristles



250mm	7000252V1
350mm	7000352V1
450mm	7000452V1



Steam Nozzle	UG71211
1,5 kW	



Steam Nozzle	UG71212
4 kW	



Diffuser 8cm for lance 7200122



Lance with brush connection 7200112



Water softener cartridge FL00009  
with resins for medium  
water consumption



Water softener cartridge FL00008  
with automatic regeneration  
of resins through sodium chlorite



Stainless Steel 7203512  
Brush 3,5 cm



Nylon Brush 7203522  
3,5 cm



Brass Brush 7203532  
3,5 cm



Stainless Steel 7206612  
Brush 6 cm



Nylon Brush 7206622  
6 cm



Brass Brush 7206632  
6 cm



Stainless Steel 7210612  
Brush 10 x 6 cm



Nylon Brush 7210622  
10 x 6 cm



Brass Brush 7210632  
10 x 6 cm