

# MRT





## **BUILT FOR AUSTRALIA READY FOR ANYTHING**

Proudly Australian-owned and engineered, MRT designs, manufactures, and installs premium aluminium ute canopies, trays, toolboxes, and accessories that set the benchmark for design precision, performance, and value.

Since 2008, we've earned the respect of Australia's toughest industries through quality workmanship and reliability. Whether you manage a fleet, own a trade business, or chase weekends off-road, MRT helps you build a vehicle that's workday tough and weekend ready.

Through our nationwide distribution network, customers across Australia benefit from fast, reliable delivery wherever they're located.

## **THE MRT MANUFACTURING DIFFERENCE**

In the canopy and tray industry, most manufacturers fall into one of two groups: Australian workshops limited by cost and production scale, or mass importers relying on generic, off-the-shelf components. MRT sits in a category of its own. With Australian ownership, in-house engineering, and a purpose-built offshore facility, we deliver world-class manufacturing supported at every price point, backed by a level of design discipline no generic importer can replicate.

### **THE RIGHT FIT FOR EVERY UTE**

MRT has built canopy and tray setups for tens of thousands of utes. No matter the brand, make, model, or size, each system is engineered around vehicle capability to ensure strength, compatibility, and a seamless fit for work, towing, or adventure.

### **IN-HOUSE ENGINEERING & PRODUCT DEVELOPMENT**

MRT is driven by engineering, not imitation. We do not replicate what already exists in the market; we create new solutions, refine manufacturing methods, and push canopy and tray technology forward. With full product development capability, MRT brings advanced design thinking to every stage of the process. Our in-house engineering and R&D teams design purpose-built components ensuring each part is developed for its function rather than inherited from generic catalogue items. This engineering-first approach sets a higher technical standard across the entire product range.

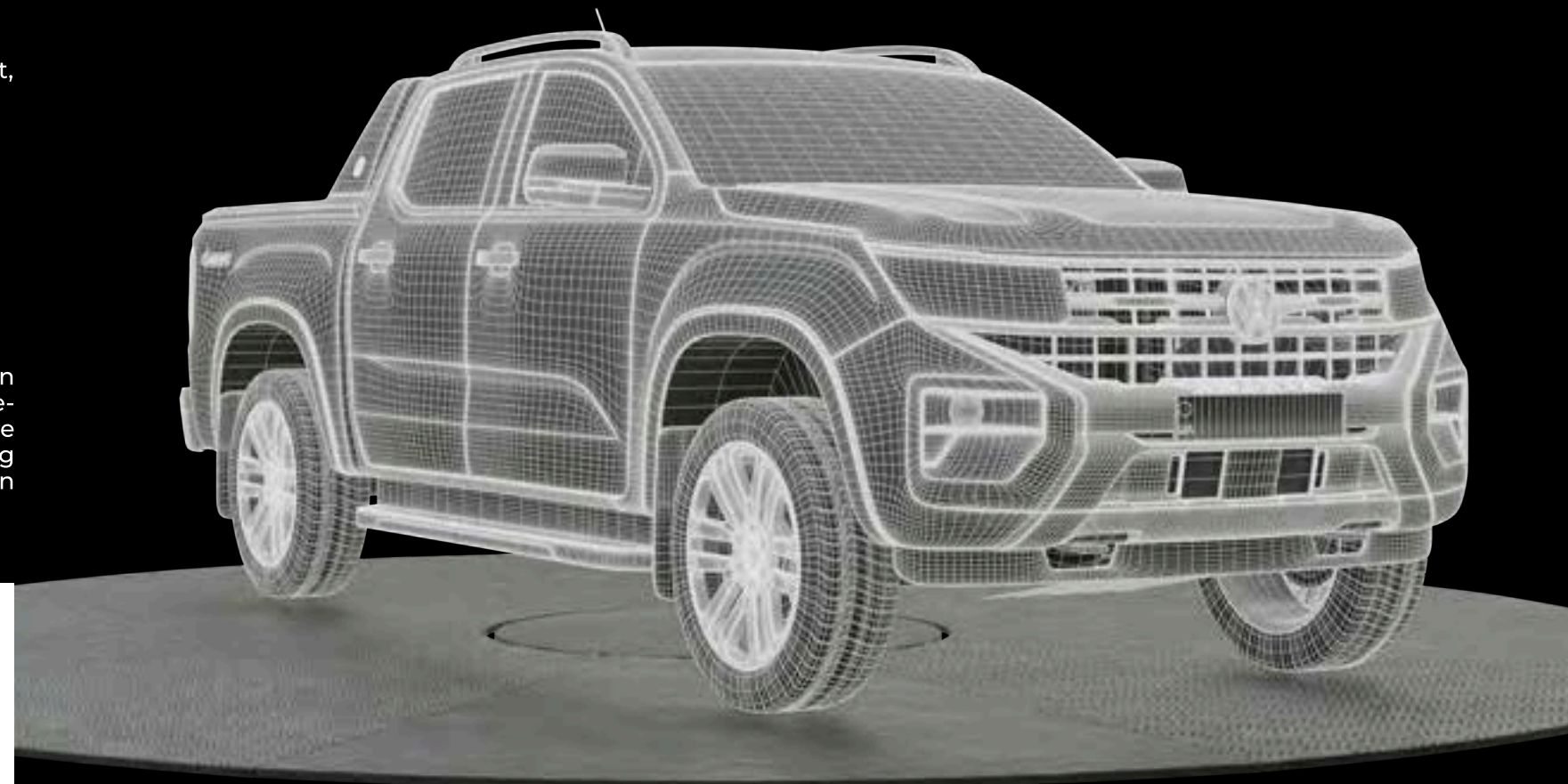
### **ADVANCED MANUFACTURING WITH PREMIUM MATERIALS**

MRT products are built using materials and processes selected for strength, accuracy, and consistency. We use 5052 marine-grade aluminium for its proven tensile strength, corrosion resistance, and fatigue performance, outperforming common 1060-grade alternatives.

Our custom extrusion profiles are engineered in-house to control load distribution and rigidity while reducing unnecessary weight. Structural adhesive bonding is applied where it improves precision and prevents weld distortion, resulting in cleaner, stronger joints. These methods reflect MRT's commitment to continual refinement and a manufacturing approach grounded in an unwavering dedication to building things the right way rather than cost-saving or convenience.

### **TOTAL QUALITY CONTROL**

Unlike brands that rely on third-party factories, MRT controls every stage of production to ensure products are built exactly to our standards. Each item moves through a defined workflow with checks, measurements, and sign-offs that maintain consistency from the first cut to final fitment. This disciplined structure removes variation, protects accuracy, and ensures every MRT product arrives ready to install with no adjustments or rework.



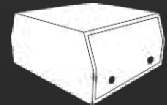
**INNOVATION DRIVES US, STRENGTH DEFINES US, QUALITY PROVES US**

# TRAY & CANOPY COMBO



## Flatbed Ute Tray

Lightweight aluminium tray with a 1,000kg load-carrying capacity, delivering a high-quality platform for supporting the canopy or transporting tools, equipment, and larger loads.



## Ute Canopy

Premium, fully seam-welded aluminium canopy with stainless steel piano hinges, dust seals, and reinforced striker plates.



## Lift-off System

Add a lift-off system, allowing you to remove the canopy fully loaded and regain access to your tray whenever you need it.



## Whale Tail Locks

Heavy-duty whale tail compression locks providing secure, dustproof closure.



## Keyless Entry System

Unlock your canopy at the push of a button for seamless access and convenience.



## LED Tail Lights

Choose between the 284 or 355 LED tail lights, offering durable, sealed, maintenance-free lighting with sleek designs and sequential indicators.



## Tailored Undertray Toolboxes

Maximise storage with custom-fit, lockable under-tray toolboxes, providing secure and organised space for tools and essential gear.



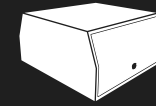
## Flared Mudguards

Flared guards maintain legal wheel coverage and deliver a bold, purpose-built look that complements the vehicle's overall profile. They also allow the canopy to run a slimmer width, supporting clearer rear vision.



# XSERIES Chassis Mount Canopy

The peak of industry innovation at a never-seen-before price point



## Chassis Mount Canopy

Integrated, all-in-one canopy structure that is mounted directly to the chassis and skips the layered build of a tray and a canopy.



## Lighter weight, with more room for features

The X-Series canopy is built for strength without excess weight, allowing for greater payload capacity and more integrated features.



## Flush Flooring

Fully flush floor with no raised sills increases usable space, making it easier to load fridges, tools, and large equipment.



## Internal LED Lighting

Dual-colour LED lighting provides bright white illumination for visibility and a yellow mode to reduce bug attraction outdoors.



## Advanced Locking System

The premium 3-stage slam-shut locking system with finger-pull opening ensures secure, dustproof, and effortless access in all conditions.



## Anderson Out

50A Anderson plug ensures reliable power for auxiliary batteries, 12V accessories, and off-grid setups, keeping you powered anywhere.



## Keyless Entry System

Unlock your canopy and under-tray storage accessories at the push of a button for seamless access and convenience.



## LED Tail Lights

Choose between the 284 or 355 LED tail lights, offering durable, sealed, maintenance-free lighting with sleek designs and sequential indicators.



## Tailored Undertray Toolboxes

Maximise storage with custom-fit, lockable under-tray toolboxes, providing secure and organised space for tools and essential gear.



## Flared Mudguards

Flared guards maintain legal wheel coverage and deliver a bold, purpose-built look that complements the vehicle's overall profile. They also allow the canopy to run a slimmer width, supporting clearer rear vision.

# CANOPY ACCESSORIES

MRT has designed a full range of high-quality canopy accessories to enhance functionality, capability, and everyday use. From this range, our signature packages are built for specific purposes, bringing together the accessories that best support the way you work or adventure.



SPARE WHEEL CARRIER, CANOPY LADDER, JERRY CAN HOLDER



RANGE OF ROOF RACKS



UNDERTRAY DRAWER



KEYLESS ENTRY SYSTEM



UNDERTRAY TOOLBOXES



LIFT - OFF SYSTEM  
\*Available on tray and canopy only.



CANOPY PANTRY



CANOPY DRAWERS



CANOPY SHELVING



# SIGNATURE

— P A C K A G E S —

## PURPOSE-BUILT SETUPS FOR HOW YOU USE YOUR VEHICLE

Whether it's work, travel, dogs, or daily life, our signature packages provide a practical system that's ready to go. Signature Packages are available as either a tray and canopy combination or a chassis-mount canopy. Both configurations deliver the same core goal: a complete setup that works straight away, without the complexity of building it piece by piece.

## INSTALLED BY MRT TRAINED TECHNICIANS

Installation is available with MRT Trained Technicians, including Advanced Driver Assistance System (ADAS) technology sensor relocation and calibration, if required. This ensures modern vehicle safety systems continue to operate correctly after the tray or canopy installation.

## SIZES TO SUIT YOUR VEHICLE

All canopies and trays are available in a range of sizes to suit Dual-Cab, Extra-Cab, and Single-Cab utes, including USA Pick-Up models.



# INITIATOR

## YOUR ADVENTURE STARTS HERE



### 2 OR 3 DOOR CONFIGURATION

Choose between side door access or side and rear canopy access.



### TAILORED UNDERTRAY TOOLBOXES

Custom-fit lockable undertray toolboxes maximise secure storage for tools and gear.



### FLARED MUDGUARDS

Maintain legal wheel coverage while enhancing the vehicle's stance.



### RACK OPTIONS

Choose X-Series Platform Rack, three Ladder Racks, or T-Channel Rails.



### LED TAIL LIGHTS

Choose between 284 or 355 LED tail lights with durable modern design.



### LIFT-OFF COMPATIBLE\*

For tray and canopy combos, opt for a lift-off system for tray access when required.



### KEYLESS ENTRY SYSTEM

Unlock canopy and undertray storage at the push of a button.



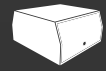
### PREMIUM CONVENIENCE PACKAGE (CHASSIS-MOUNT)

Keyless Entry System, Internal LED Lighting, and Anderson Out.



# EXPLORER

## THE PINNACLE IN ADVENTURE



### 2-DOOR CONFIGURATION

Side door canopy access, allowing rear wall mounting for canopy accessories.



### FLARED MUDGUARDS

Maintain legal wheel coverage while enhancing the vehicle's stance.



### LED TAIL LIGHTS

Choose between 284 or 355 LED tail lights with durable modern design.



### TAILORED UNDERTRAY TOOLBOXES

Custom-fit lockable undertray toolboxes maximise secure storage for tools and gear.



### UNDERTRAY DRAWER

Sturdy lid doubles as workbench or kitchen, with drawers for organised storage.



### KEYLESS ENTRY SYSTEM

Unlock canopy and undertray storage at the push of a button.



### RACK OPTIONS

Choose X-Series Platform Rack, three Ladder Racks, or T-Channel Rails.



### SPARE WHEEL CARRIER

Secure rear-mounted spare wheel carrier for easy access and space efficiency.



### JERRY CAN HOLDER

Rear-mounted holder designed to safely carry fuel or water jerry cans.



### CANOPY LADDER

Rear ladder provides safe, easy access to roof racks and canopy top.



### LIFT-OFF COMPATIBLE\*

For tray and canopy combos, opt for a lift-off system for tray access when required.



### PREMIUM CONVENIENCE PACKAGE (CHASSIS-MOUNT)

Keyless Entry System, Internal LED Lighting, and Anderson Out.



# TRADESMAN

## AUSTRALIA'S TRUSTED WORK HORSE



### 2 OR 3 DOOR CONFIGURATION

Side door canopy access, allowing rear wall mounting for canopy accessories.



### UNDERTRAY DRAWER

Sturdy lid doubles as workbench or kitchen, with drawers for organised storage.



### FLARED MUDGUARDS

Maintain legal wheel coverage while enhancing the vehicle's stance.



### FULL RACK WITH OVERHANG

Full-length rack with rear overhang for increased load carrying capacity.



### LED TAIL LIGHTS

Choose between 284 or 355 LED tail lights with durable modern design.



### LIFT-OFF COMPATIBLE\*

For tray and canopy combos, opt for a lift-off system for tray access when required.



### TAILORED UNDERTRAY TOOLBOXES

Custom-fit lockable undertray toolboxes maximise secure storage for tools and gear.



### PREMIUM CONVENIENCE PACKAGE (CHASSIS-MOUNT)

Keyless Entry System, Internal LED Lighting, and Anderson Out.



### KEYLESS ENTRY SYSTEM

Unlock canopy and undertray storage at the push of a button.



# COMPANION

## THE ULTIMATE RIDE FOR MAN'S BEST FRIEND



### DOG BOX CANOPY COMBO

Dog box and canopy combination allowing safe dog transport with separate storage space.



### VARIETY OF DOG BOX SIZES (CHASSIS-MOUNT)

Single, divided, or cross-deck dog box options for chassis-mount canopies, accommodating one or two dogs.



### FLARED MUDGUARDS

Maintain legal wheel coverage while enhancing the vehicle's stance.



### UNDERTRAY DRAWER

Sturdy lid doubles as workbench or kitchen, with drawers for organised storage.



### LED TAIL LIGHTS

Choose between 284 or 355 LED tail lights with durable modern design.



### RACK OPTIONS

Choose X-Series Platform Rack, three Ladder Racks, or T-Channel Rails.



### TAILORED UNDERTRAY TOOLBOXES

Custom-fit lockable undertray toolboxes maximise secure storage for tools and gear.



### LIFT-OFF COMPATIBLE\*

For tray and canopy combos, opt for a lift-off system for tray access when required.



### KEYLESS ENTRY SYSTEM

Unlock canopy and undertray storage at the push of a button.



### PREMIUM CONVENIENCE PACKAGE (CHASSIS-MOUNT)

Keyless Entry System, Internal LED Lighting, and Anderson Out.

### Variations available for Chassis-Mount canopies



Single Compartment Passenger Side

Option 1 - Passenger Side



Single Compartment Driver Side

Option 1 - Driver Side



Crossdeck Dog/Toolbox

Option 2



Crossdeck Combobox

Option 3



# UTE TRAYS



## STRONG, LIGHTWEIGHT ALUMINIUM CONSTRUCTION

Built to withstand tough conditions without adding unnecessary weight.



## 1000KG LOAD-CARRYING CAPACITY

Engineered for strength, capable of handling heavy loads with ease.



## 3MM ALUMINIUM MUDGUARDS AS STANDARD

Durable and corrosion-resistant for superior protection.



## INTEGRATED RECESSED LATCHES

Ensuring secure fastening and a streamlined design.



## FLUSH COAMING RAILS & REAR

Designed for a sleek finish and added functionality.



## REMOVABLE DUAL-WALL SIDES & TAILGATE

Offering ultimate convenience and adaptability.



## 76MM (WIDE) X 5MM (THICK) ALUMINIUM HEADBOARD TUBE

Reinforced for extra durability and protection.



## SIZING

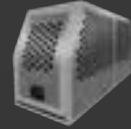
Tray sizing is available in 1650mm, 1800mm, 2100mm, and 2400mm lengths, with a choice of 1800mm or 1900mm widths.



# TOOLBOXES



**TAILORED & STANDARD UNDER TRAY TOOLBOXES**



**DOG BOXES**



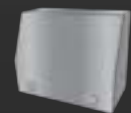
**3/4 OPENING TOOLBOXES**



**3/4 OPENING TOOLBOXES WITH DRAWERS**



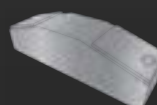
**CHEST STYLE TOOLBOXES**



**FULL OPENING TOOLBOXES**



**CROSSDECK TOOLBOXES**



**GULLWING TOOLBOXES**



## ENGINEERED TO PRESERVE THE SAFETY TECHNOLOGY YOUR VEHICLE WAS DESIGNED WITH

Today's vehicles are equipped with sophisticated safety systems that do far more than add convenience. Reverse cameras, parking sensors, blind spot monitoring, 360° camera systems, radar and ultrasonic sensors all play an important role in supporting driver awareness and everyday safety.

These technologies are carefully integrated by the vehicle manufacturer and designed to operate within precise parameters. When the factory tub is removed, maintaining the performance of these systems requires far more than simply relocating the hardware. Position, height, angle, and detection coverage must all be carefully considered to ensure the systems continue to function as intended.

That is why MRT invests heavily in design, engineering, and vehicle-specific development. Our Australian R&D team works extensively on each platform to create considered relocation solutions that support the continued operation of factory safety features, while maintaining the quality, fit, and finish expected of a premium vehicle upgrade.

## A DETAILED ENGINEERING APPROACH

### PRECISION ASSESSMENT

Before components are removed, their original location, alignment, and operating zones are carefully evaluated to guide accurate relocation.

### VEHICLE-SPECIFIC ENGINEERING

Custom-designed brackets and mounting solutions are developed for each vehicle platform to position cameras and sensors correctly.

### INTEGRATED DESIGN

Safety technologies are thoughtfully incorporated into the tray or canopy system so they remain functional while complementing the overall vehicle design.

### VALIDATION AND TESTING

Following installation, systems are tested to verify correct operation and confirm they continue to perform in line with their intended function.

### CONFIDENCE BUILT IN

MRT's approach is centred on preserving the technology your vehicle was designed with through careful engineering, thorough development, and attention to detail at every stage.



# FLEET BODIES FOR AUSTRALIA'S INDUSTRIES

MRT designs and manufactures fleet trays and canopies engineered for demanding commercial environments, supporting industries from mining and construction to trades and national service fleets. Systems are developed for durability, consistency, and long service life, with each build following defined fleet specifications to ensure uniform fit-out, reliable performance, and seamless integration across varied vehicle platforms.

High-volume programs are delivered with consistent production to reduce downtime and enable efficient deployment across sites. Operating from a purpose-built 10,000 sqm manufacturing facility with end-to-end production control, MRT's vertically integrated model enables scalable output, controlled lead times, consistent finishes, and repeatable quality across large programs.

MRT works directly with fleet managers to plan, schedule, and coordinate multi-vehicle, multi-site rollouts, with structured communication and rollout management keeping programs aligned from planning through to national delivery.

## TRUSTED AND PROVEN

From local businesses, government operations to national symbols, MRT is proud of supporting businesses Australia-wide with service body solutions. Selected projects show how builds are delivered across varied industries.



Transport  
for NSW

High-volume, compliance-critical fleet builds with consistent quality and dependable delivery.



Airside service bodies custom designed and built for engineering and maintenance services.



Customised, safety-focused service bodies built for reliable, future-ready field operations.

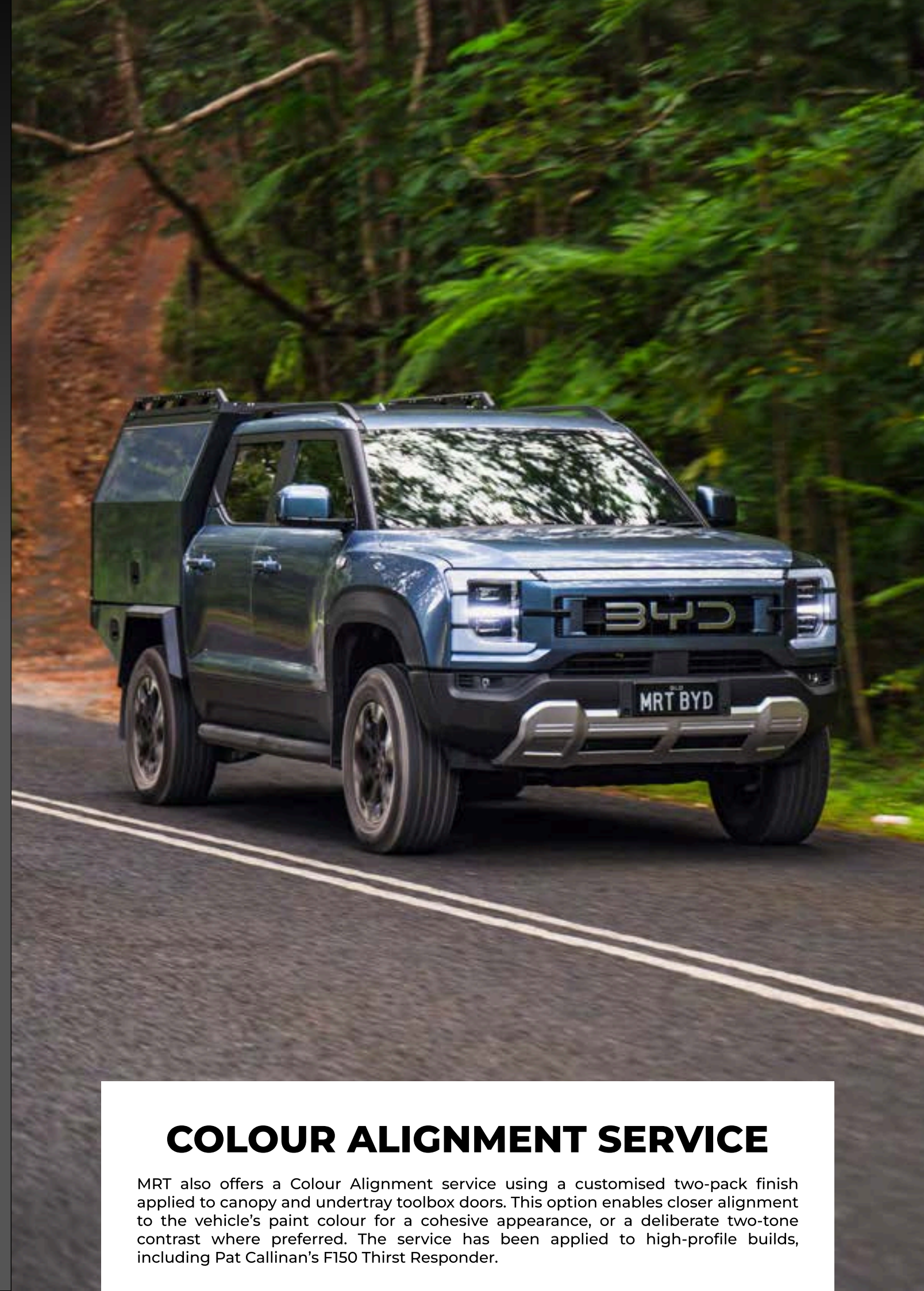
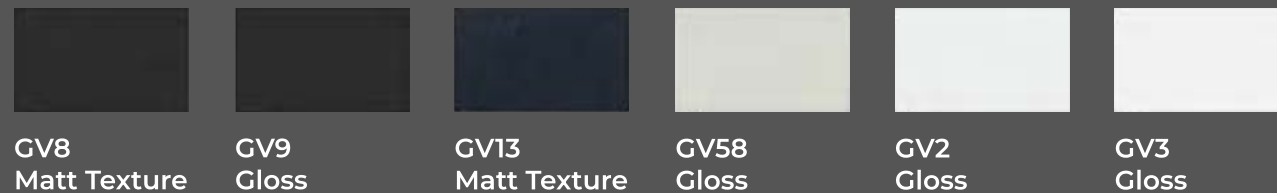


# POWDER COAT SOLUTIONS

MRT provides premium powder coating across trays and canopies, engineered for high UV resistance and long-term durability in harsh Australian conditions. Single or dual colour configurations allow elements such as doors or underbodies to be finished independently from the main body for a cohesive result.

A carefully developed range of standard finishes is designed to complement modern vehicle paint tones. GV8 is a satin matte black selected to suit the majority of vehicle colours, with a texture that helps minimise the visibility of marks and fingerprints while maintaining a clean, premium appearance.

The white range is formulated to align with the varying white tones used by vehicle manufacturers, supporting visual consistency across the vehicle and canopy system. Each finish is selected to deliver durability, protection, and a considered aesthetic outcome.



## COLOUR ALIGNMENT SERVICE

MRT also offers a Colour Alignment service using a customised two-pack finish applied to canopy and undertray toolbox doors. This option enables closer alignment to the vehicle's paint colour for a cohesive appearance, or a deliberate two-tone contrast where preferred. The service has been applied to high-profile builds, including Pat Callinan's F150 Thirst Responder.



“

This is really quite simply the best 4WD setup I've ever owned, and I've probably owned about 30 different 4WDs.



PAT CALLINAN  
Australia's 4x4 Icon

LEARN  
MORE





# WHERE WILL YOUR MRT GEAR TAKE YOU?



[mrt.com.au](http://mrt.com.au)

