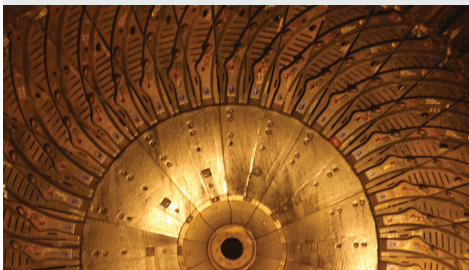


# Mill and Crusher Solutions



Bradken's mill and crusher liner range provide the safest solutions for product handling and installation. Our solutions are supported by performance monitoring and reporting utilising local customer service support. This enables our customers to extract the best performance and the most value from their equipment.

## Grinding Mill Solutions



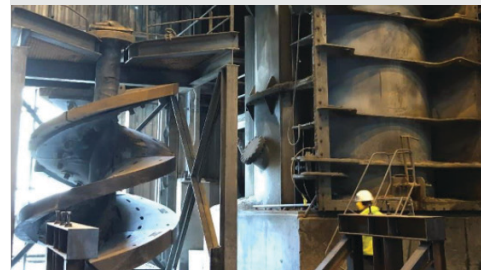
Bradken is a leading grinding mill solutions provider, supported by design and manufacture of high-quality mill liner components to suit AG/ SAG, Ball and Rod Mills. By utilising the latest technologies, we provide customers with advanced Mill Liner Solutions and products that improve mill performance, safety and availability.

## Crusher Solutions



Bradken is renowned for providing world class quality and services to the mining and quarrying industries, with our products specifically designed and manufactured to meet the increasingly demanding harshness of these industries. Our products include Crusher Solutions, for Gyratory Crushers, Cone Crushers and Jaw Crushers.

## Vertical Mill Solutions



Bradken Vertical Grinding Mill Liners are specifically designed to suit your OEM equipment. Bradken can also customise the design of the Vertical Grinding Mill wear components to further increase performance and wear life to suit your operating conditions.



**Our Innovation. Your Advantage.**

BK Sales & Marketing Global Record Flyer Mill and Crusher Liner Solutions Overview BRADKEN® REV0 21/04/2022  
All company names, logos, and identifying marks used throughout this publication are the property of their respective trademark owners, they are used for descriptive purposes only.



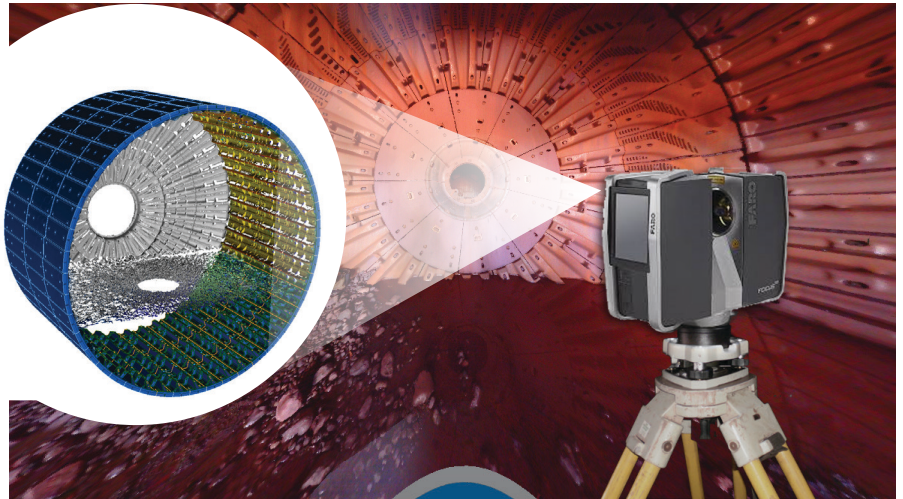
# Vision Insight®

## 3D Laser Wear Monitoring & Reporting

Bradken's highly skilled team embraces new technology that helps provide our customers with world-class services.

Bradken's Vision Insight helps our customers achieve the maximum liner life expectancy through detailed monitoring and reporting including:

- Technical on-site presence
- Confined space safety
- Fast data capture
- Liner wear profiling
- Mill charge volume analysis
- Liner life predictions
- Product enhancement
- Continual improvement
- Mill performance monitoring
- Maximising wear consumables



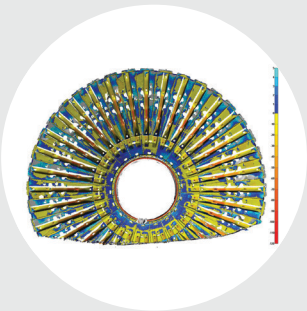
### Deliverables:

#### Dashboard Monitoring

Dashboard monitoring for accurate data collection on individual liners.

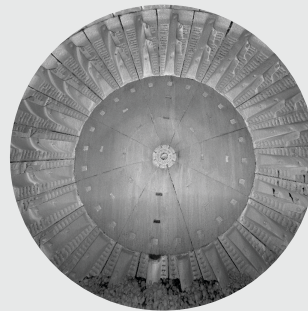
#### 3. PART PERFORMANCE DASHBOARDS

| FEED END - Throat Liner                 |           |        | BK32723A | Rev 2 |
|---|-----------|--------|----------|-------|
| Description                             | Plate     | Lifter |          |       |
| Installed Date                          | 1/09/2015 |        |          |       |
| No of days in Service                   | 630       |        |          |       |
| Installed Size                          | 54        | 144    |          |       |
| Change-Out Size                         | 35        | 35     |          |       |
| Minimum Measurement                     | 49        | 118    |          |       |
| Material Remaining                      | 14        | 83     |          |       |
| Milled Tonnes                           | 5,630,856 |        |          |       |
| Wear Rate (mm/Day)                      | 0.01      | 0.04   |          |       |
| Wear Rate (mm/Million Tonnes)           | 0.89      | 4.62   |          |       |
| Approx. Life Remaining (Days)           | 1764      | 2011   |          |       |
| Projected Total Tonnes (Million Tonnes) | 21.40     | 23.61  |          |       |



#### Detailed Information

Detailed Information for part, liner life predictions, wear data capture, days and tonnes milled.



#### 3D Wear Profiling

3D wear profiling for accurate 3D DEM modelling to improve mill performance.



Our Innovation. Your Advantage.

BK Sales & Marketing Global Record Flyer Mill and Crusher Liner Solutions Overview BRADKEN® REVO 21/04/2022  
All company names, logos, and identifying marks used throughout this publication are the property of their respective trademark owners, they are used for descriptive purposes only.

