

# VENUE PACK



## EXPO PAVILION

Keel Square, Sunderland



In partnership with  
**University of  
Sunderland**



#ExpoSunderlandPavilion

@exposunderland

[exposunderland.com/expo-pavilion](https://exposunderland.com/expo-pavilion)

# Contents

Expo Sunderland Pavilion overview 3 + 4

## Event space

- Exhibition & installations 5
- Dimensions 6
- Floorplans 7
- Facilities 8
- Resources & equipment 9
- Access and address 10

## LED screen

- Technical specifications 11-18

Hire costs, booking & contact information 19

Image gallery 20



The Expo Sunderland Pavilion structure and the large LED screen are programmed separately. Screen programme, advertising and event space may link, however this is not essential.

# Expo Sunderland Pavilion

The impressive structure includes a temporary exhibition and events space located within the heart of Riverside Sunderland. This has been designed as a place to showcase and celebrate technological innovations, creativity and culture in a welcoming, playful and inclusive way.

At the heart of the Expo Sunderland Pavilion programme are five key principles:

- **Digital Innovation and Technology**

Promoting digital inclusion and introducing new technologies and digital artforms

- **Creative Economy and Collaboration**

Working in collaboration to add value to what already exists in the city and attract new investments in culture

- **Cultural Vibrancy**

Promoting cultural expression, diversity and heritage across Sunderland communities, fostering a sense of belonging

- **Sustainability**

Integrating sustainability principles into our programme and practices, embracing activity that raises awareness and action on the climate emergency. The Pavilion's structure has been fabricated from a light gauge steel frame with high recycled content, often referred to as Green Steel. Using this sustainable building material has minimised the carbon footprint of the building

- **Health and Wellbeing**

Providing opportunities for connection and creative expression to enable Sunderland residents to live fulfilling, healthy and active lives.

# Exhibitions & installations

## **Display of 2D artwork:**

There is no wall hanging space at the Pavilion.  
2D artwork must be freestanding.

## **Use of the windows:**

Self-cling window vinyls may be installed to share imagery and artwork, subject to approval.

## **Display of 3D artwork and installations:**

The steel frame of the building may be used to hang artworks from above. Plinths or other means of display may be brought into the space for exhibitions.

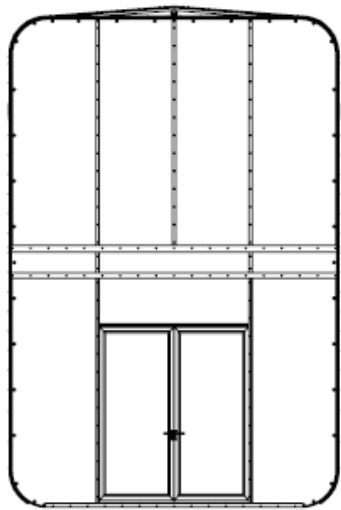
## **Lighting:**

There is no fixed lighting in the space. Please consider lighting when designing your exhibition/installation.

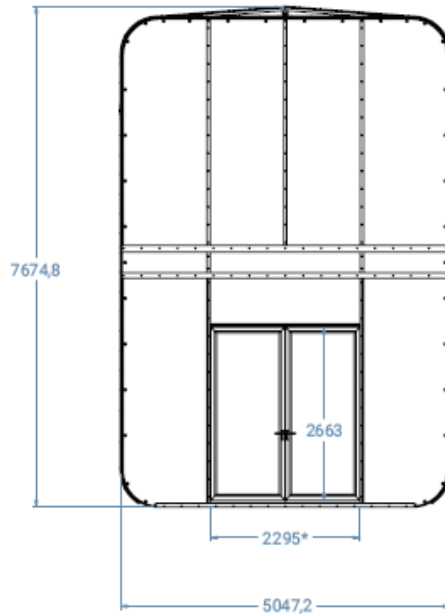
## **Audiences:**

Doors to the Pavilion can either be closed so that exhibitions are viewed from the outside only; partly open (1 door only) so that exhibitions can be explored by audiences inside the building, or completely open to create a corridor through the Pavilion.

# Dimensions



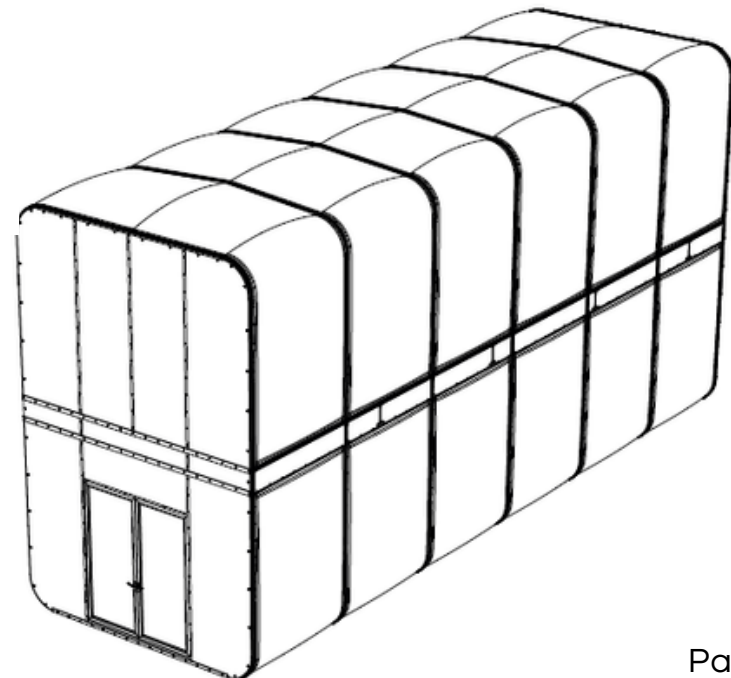
REAR ELEVATION



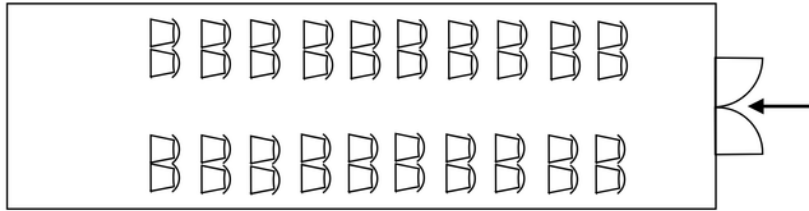
FRONT ELEVATION

The Pavilion is a 5x15m (interior 4.3x14.9m) steel structure clad with clear acrylic panels, and so the interior of the structure is visible from the front and two side faces.

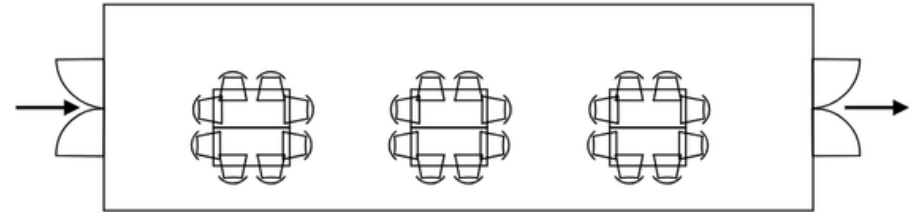
There are two double doors on either side of the building which can be open or closed to the public.



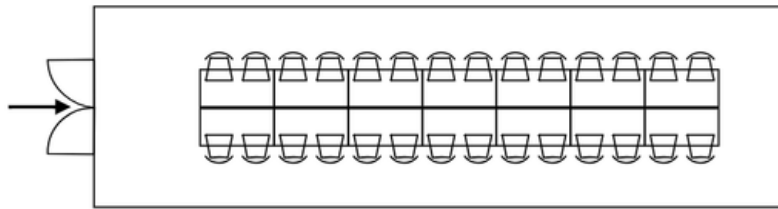
# Floorplans (examples)



Theatre style  
- approx capacity x 40 participants, 1 door open



Workshop style  
- approx capacity x 40 participants, 2 doors open



Banquet/Boardroom style  
- approx capacity x 28 participants, 1 door open

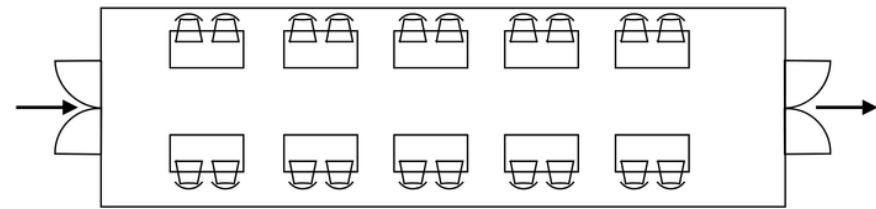


Table top /exhibition/trading style  
- approx capacity x 10 positions, 2 doors open

# Facilities

## **Facilities:**

There are no toilet, refreshment or wash facilities at the Pavilion. Event timings and plans should take this into account.

## **Comfort:**

There is no heating system in the Pavilion. Please ensure that event organisers, participants and attendees are dressed appropriately for all weather eventualities.

## **Risk Assessments:**

We require all events to be Risk Assessed by the event organiser and for Risk Assessments to be signed off by Expo Sunderland prior to events.

## **Capacity:**

The Pavilion can comfortably and safely hold 15-40 people, depending on layout. Please see the following pages for suggested floor plan layouts for different kinds of events, exhibitions and activations.

## **Opening times:**

The Pavilion will be opened and locked at agreed times (between 9.30am-4.30pm Mon-Sat) at no additional cost if you are invigilating the space yourself and you require the space to be opened or locked outside of these hours then additional charges may be incurred.

# Resources & equipment

## **Power:**

There are 4x double UK standard plug sockets in the space and extension cables may be used.

## **Water:**

No water supply available

## **WiFi:**

Public WiFi is available

## **Toilets:**

Access to public toilets nearby, therefore two representatives would be required for event hosting.

## **Screens/monitors:**

None provided

## **Furniture:**

None provided

## **Lighting:**

There is no fixed lighting in the space. Please consider lighting when designing your exhibition/installation.

## **Security:**

No security provision in place. To be provided by the event organiser.

Expo Sunderland can look to engage with community wardens depending on the nature of the event/installation.



# Access & address

## Address:

Expo Sunderland Pavilion  
Keel Square  
High Street West  
Sunderland  
SR1 3DZ

[Link to Google Maps pin](#)

**Vehicle access for load in/load out is available by pre-arrangement only.**

## Car parking:

[Riverside Multi-Storey Car Park](#) (8 minute walk)  
[St Mary's Multi Storey Car Park](#) (7 minute walk)

## Access:

The Pavilion will have ramped access on at least one entrance. There are no toilet facilities or quiet spaces at Expo Pavilion.

There is no specific accessible parking for the Pavilion. The nearest individual spaces are on High Street West but these cannot be guaranteed.

## Nearest metro stations:

Sunderland (7 minute walk)  
Park Lane (8 minute walk)

# Hire costs, booking & contact information

## **Expo Pavilion event space:**

Price on application

## **LED screen space:**

Price on application

Includes 30 x 30 second ad slots per day. 2 x 30 slots per hour, with a 15 hour daily run time of 8am to 11pm. Production costs to be covered by the client.

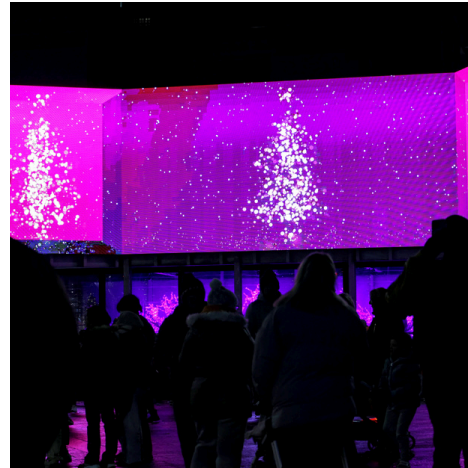
## **Booking & enquiries:**

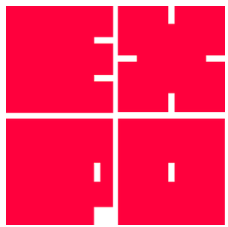
Please contact Clair Cogdon from Expo Sunderland if you wish to book the event space or the LED screen, or if you have any enquiries:

e: [clair.cogdon@sunderland.gov.uk](mailto:clair.cogdon@sunderland.gov.uk)

m: 07454 252182

# Gallery





# EXPO PAVILION

Keel Square, Sunderland

CultureHouse  
Sunderland



In partnership with  
 **University of  
Sunderland**



#ExpoSunderlandPavilion

@exposunderland

[exposunderland.com/expo-pavilion](http://exposunderland.com/expo-pavilion)