

CATALOGUE



WWW.LEDFRAMES.NL/EN



WELCOME

EFKA INTERNATIONAL BV

De Meerpaal 10
9206 AJ Drachten
The Netherlands

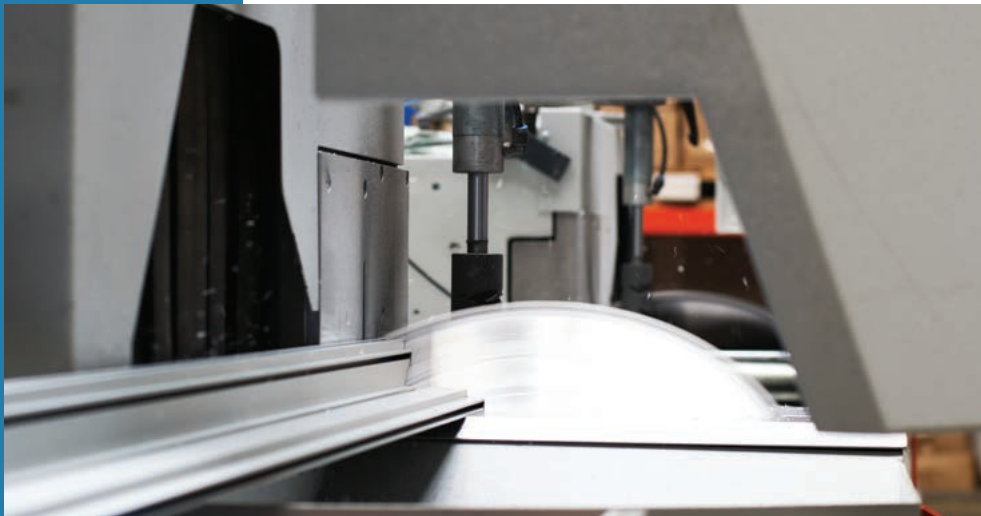
+31 512 - 47 27 21
sales@ledframes.nl
www.ledframes.nl/EN

GET TO KNOW EFKA

YOUR PARTNER IN FRAMES

EFKA is the worldwide supplier of aluminum textile, LED and panel frames for resellers in the print & sign industry.

EFKA supplies single-sided, double-sided, 3D, outdoor and curved frames. The aluminum profiles are available in various designs and lengths. They are suitable for retail, public spaces, at home, in the office, in showrooms and at exhibitions. Together with you, EFKA works on a suitable answer to your question.



THE ADVANTAGES OF

ALUMINUM FRAMES



ANY SIZE POSSIBLE

Every frame are made to measure



CHANGEABLE PRINTS

*Change the textile print easily and
create a new look and feeling*



COMPACT PACKED

*Frames are compactly packed so
worldwide transportation is easy*

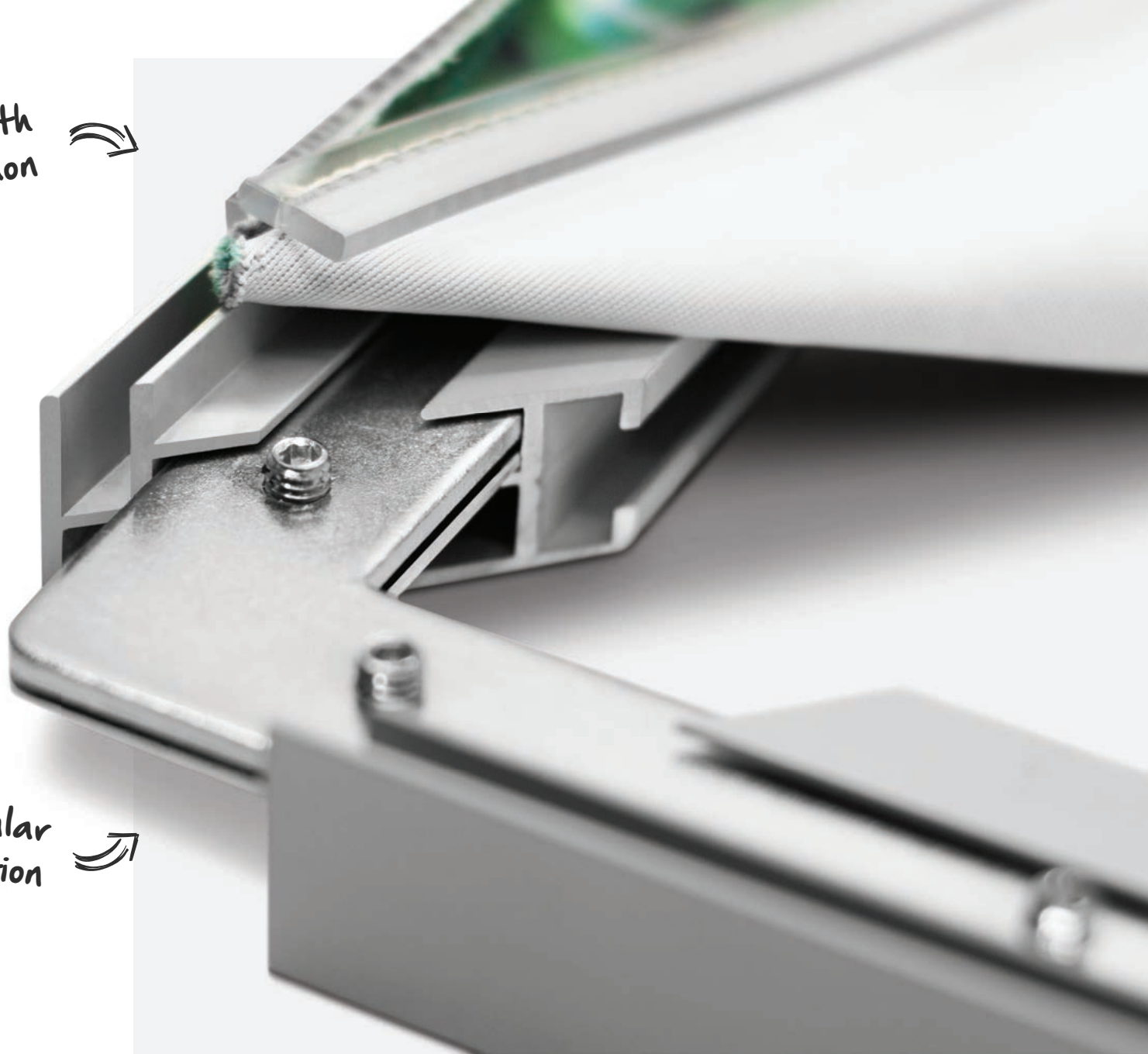


ALUMINUM IS 100% SUSTAINABLE

*Frames can be used several times and are
100% sustainable*

Textile print with
silicone tendon

Modular
construction



INDEX

6 TEXTILE FRAMES

1.1 SINGLE-SIDED	8
1.2 DOUBLE-SIDED	20
1.3 3D	28
1.4 CURVED	42
1.5 OUTDOOR	46

52 LED FRAMES

2.1 LED TECHNIQUES	54
2.2 SINGLE-SIDED	70
2.3 DOUBLE-SIDED	74
2.4 3D	80
2.5 POP-UP LEDBOX	86
2.6 DYNAMIC	90

94 ADDITIONAL FRAMES

3.1 PANEL HANGING	96
3.2 L-SHAPE	98
3.3 CORD 43	100

104

DETAILS & INFO

4.1 LARGE SIZE FRAMES	106
4.2 ACOUSTIC SOLUTION	111

116

LED COMPONENTS

5.1 LED STRIPS	118
5.2 DRIVERS	119
5.3 CONTROLLERS	120
5.4 CABLES	121

122

PRODUCT OVERVIEW

6.1 PROFILES	124
6.2 ACOUSTIC	136
6.3 LOCKSETS	137
6.4 EXTENSION SETS	138
6.5 BASEPLATES	140
6.6 WALLMOUNTS	142
6.7 CEILINGMOUNTS	142
6.8 CORNERS	143
6.9 CONNECTORS	144
6.10 TENSIONSETS	145
6.11 ADDITIONAL	145



TEXTILE FRAMES

EFKA has a wide range of aluminum textile frames that allow you to switch textile prints quick and easily. An aluminum textile frame ensures a high attention and is durable. The frame could be mounted on a wall or ceiling, but it could also be used as freestanding frame using our baseplates.



1.1 SINGLE-SIDED	8
1.2 DOUBLE-SIDED	20
1.3 3D	28
1.4 CURVED	42
1.5 OUTDOOR	46

1.1



TEXTILE FRAMES

SINGLE-SIDED

EFKA supplies single-sided frames in various versions all with their own characteristic. The textile print is easy to replace, giving an interior or public area a new look.



ECO 15

Optional: Punchholes



SIMPLE 19

Optional: Punchholes



SLIM 25

Wall mounting or hanging



HEAVY 27

Wall mounting or hanging



DECOR 27 XL 45

Available in unique colours

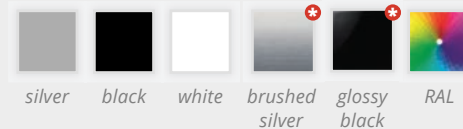


CABINET 30

Suitable as built-in frame



SLIM 33





MODULAR CONSTRUCTION

MOUNTING OPTIONS

Thanks to the modular construction, it is easy to assemble the textile frame quick and easy. Connect the corners to each other and place the desired print in the frame. Due to a modular construction the frame is compact packed and easily shipped.

THREE OPTIONS FOR MOUNTING

- Wall mounting
- Hanging
- Built-in frame



1. CONNECT THE CORNERS

Put the two different locksets together. Install the locksets in the appropriate groove and attach the miter cut lengths together.



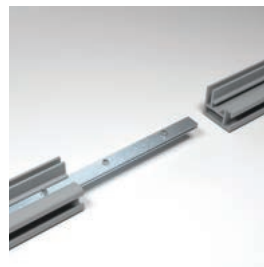
2. PLACE THE FRAME

Attach the frame by drilling it to the wall or install wall mounts. Let the wall mount support the frame. Suspension from the ceiling is also an option.



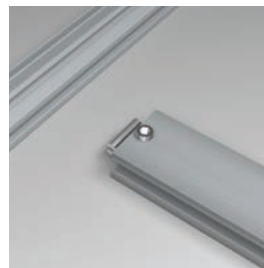
3. ATTACH THE TEXTILE PRINT

First attach the silicone tendon in the corners of the groove. Then press the print into the rest of the groove.



EXTEND THE FRAME - *OPTIONAL*

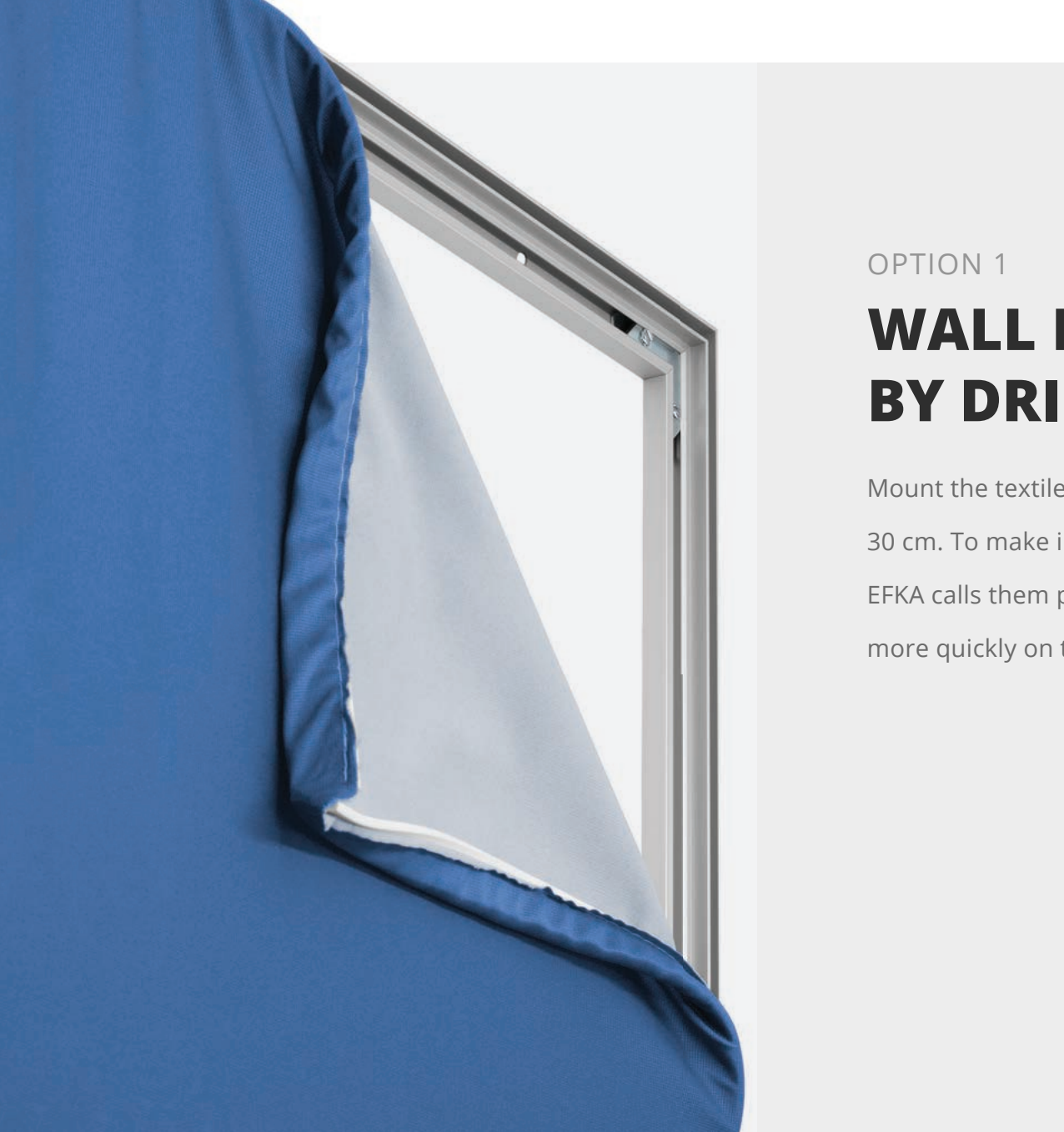
Lengths above 4000mm are divided and delivered in two or several parts. They could be easily connected with the corresponding extension set.



STRENGTHEN FRAME - *OPTIONAL*

To ensure stability of large sizes aluminum frames, stabilizers are mounted inside the frame to act like internal support beams.

See chapter 4.1
for large sizes ↗



OPTION 1

WALL MOUNTING BY DRILLING

Mount the textile frame on the wall by directly drilling the profile every 30 cm. To make installation easier, the frame could be delivered pre-drilled. EFKA calls them punch holes. The pre-drilled frame will be fastened even more quickly on the wall.





OPTION 2

WALL MOUNTING BY USING WALL MOUNTS

First mount the appropriate wall mounts to the wall. Then lift the entire textile frame over the wall mounts and let it rest on the correct groove. This method is not recommended for the **Eco 15** and **Simple 19** if the frame is longer than 200 cm.

See page 134
for all wallmounts ↗





OPTION 3

HANGING BY USING A CEILING MOUNT

The **Slim 25** and **Heavy 27** have the possibility to be suspended from the ceiling. Thanks to the ceiling mounts there are suspension eyes at the top of the frame. So all suspension options are possible.

The **Slim 25** & **Heavy 27** can be suspended by installing separately ordered ceiling mounts.

See page 135 for
all ceiling mounts ↗





OPTION 4

BUILT-IN TEXTILE FRAME

The **Cabinet 30** is a special designed profile that is suitable for different built-in installation solutions. By fitting the frame on the inside of an aperture, the whole area could be covered by a textile print.



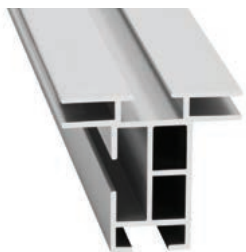
1.2



TEXTILE FRAMES

DOUBLE-SIDED

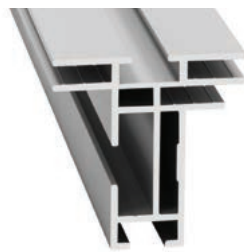
The double-sided textile frame could be used as freestanding or hanging frame. Create eye-catching displays in stores and showrooms or attractive room dividers that are perfect in any office. Make unique banners for exhibitions or other events.



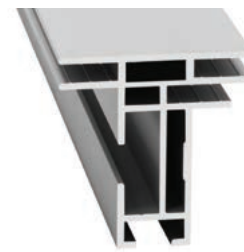
DOUBLE 44



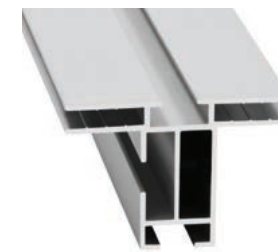
DOUBLE 44 CLOSED
Available in unique colours



DOUBLE 49
Optional: block-out fabric



DOUBLE 49 CLOSED
Optional: block-out fabric



DOUBLE 50



DOUBLE 50 CLOSED



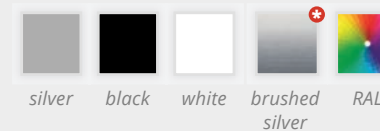
DOUBLE 80



DOUBLE 80 CLOSED



DOUBLE 100 CLOSED





MOUNTING

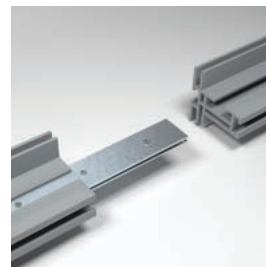
MODULAR CONSTRUCTION

Thanks to the modular construction, the assembly of a textile frame is quick and easy. By simply connecting the corners together and placing the textile print in the frame, the desired image is ready in no time. Due to the modular properties of the frame and compact packaging, transport of large sizes is possible.



1. CONNECT THE CORNERS

Put the two different locksets together. Install the locksets in the appropriate groove and attach the miter cut lengths together.



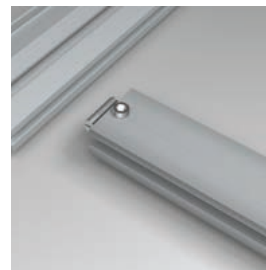
EXTEND THE FRAME - *OPTIONAL*

Lengths above 4000mm are divided and delivered in two or several parts. They could be easily connected with the corresponding extension set.



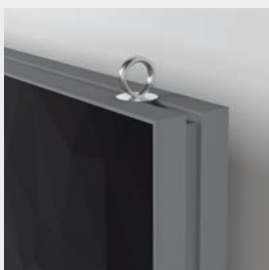
2. PLACE THE PRINT

First attach the silicone strip of the print to the corners, then press the print into the rest of the groove.



STRENGTHEN FRAME - *OPTIONAL*

To ensure stability of large sizes aluminum frames, stabilizers are mounted inside the frame to act like internal support beams.



3. ATTACH THE FRAME

Place the frame freestanding or hanging with the appropriate installation options.



BLOCKOUT FABRIC - *OPTIONAL*

The blockout fabric blocks the lights, so both textile prints are visible.



OPTION 1

HANGING OPTIONS

Create eye-catching hanging displays, banners that are perfect in any showroom or above an exhibition stand with the TÜV-certified hanging systems from EFKA. With the suspension cable and ceiling mount you can quickly and easily attach a double-sided textile frame.

See page 135 for
all ceiling mounts ↗



CEILING MOUNT



SUSPENSION CABLE



OPTION 2

FREESTANDING OPTIONS

Create eye-catching displays in shops, create exhibition stands, banners or unique room dividers that are perfect in any office. Use the baseplates in showrooms or under an exhibition desk. The baseplates are divided into regular, side and unique. Varying in weight and length, each with their own characteristic, our baseplates have a modern look.

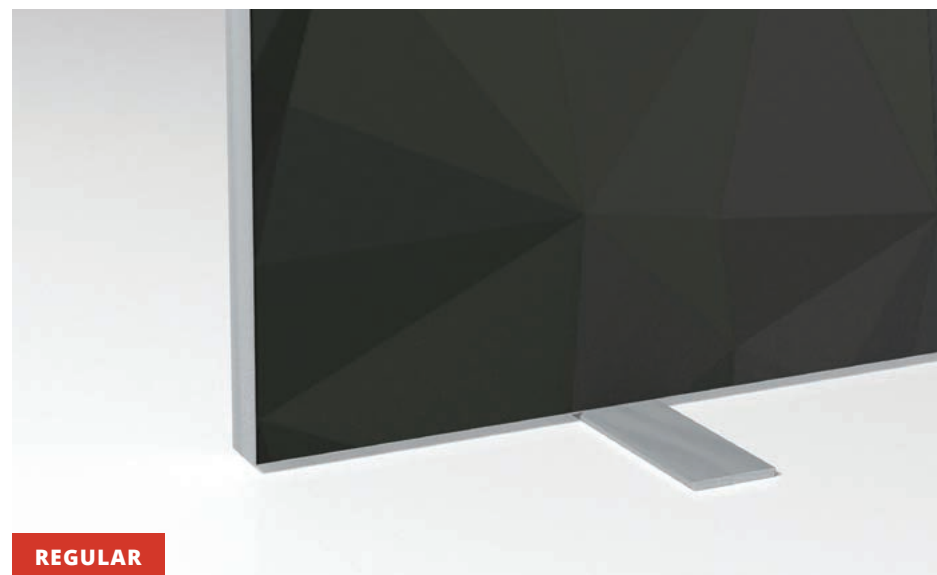
See page 132
for all baseplates ↗



UNIQUE



SIDE



REGULAR

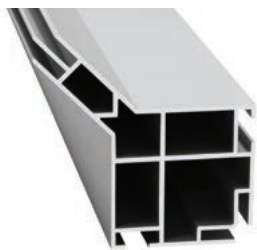
1.3



TEXTILE FRAMES

3D

With the modular 3D profiles you can create unique objects within an instant. The printed textile print is visible from several sides and could be used hanging and freestanding. This unique construction makes it possible to create complete exhibition stands.



CARRE 80

Double-sided corner profile



DOUBLE 80



ENDCAP CARRE



CUBE 65

Create a cube



CORNER CONNECTOR

Three-sided corner piece



QUATRO 50

Four-sided frame



2-WAY CONNECTOR



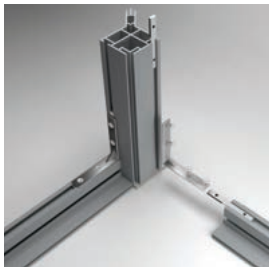
3-WAY CONNECTOR



3D FRAMES

CARRE 80 HANGING & FREESTANDING

With the **Carre 80** you can design unique 3D banners and exhibition stands. The combination with the **Double 80** makes a solid and stable unit. Any size is possible by using stabilizers. With the help of ceiling mounts it is possible to attach the frame to the ceiling. This profile could also be used as a freestanding frame where baseplates aren't needed.



1. CONNECT THE CORNERS

Place the two different locksets together. Install the locksets in the appropriate groove and connect the corners.



2. PLACE THE ENDCAPS

Finish the corners neatly by simply sliding the endcaps into the appropriate holes.

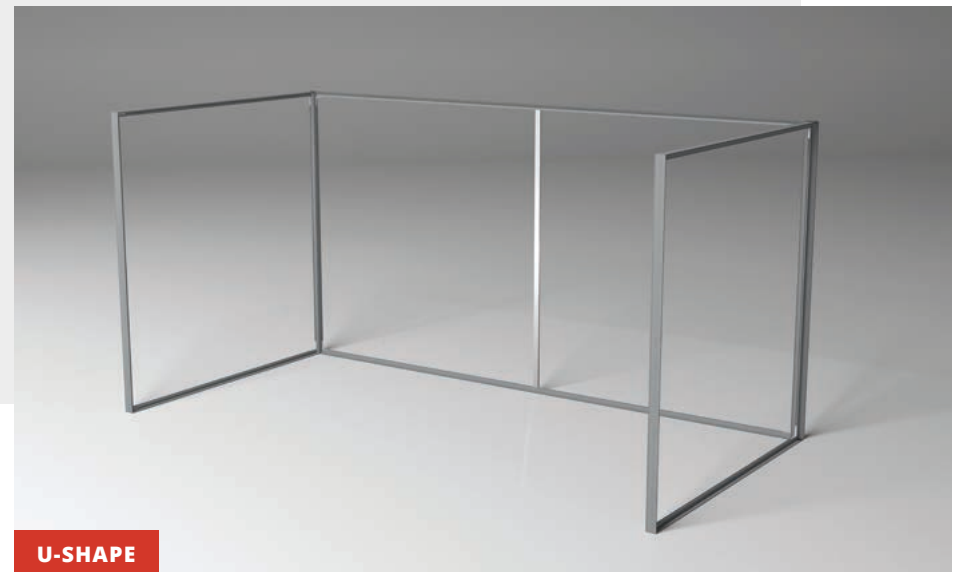
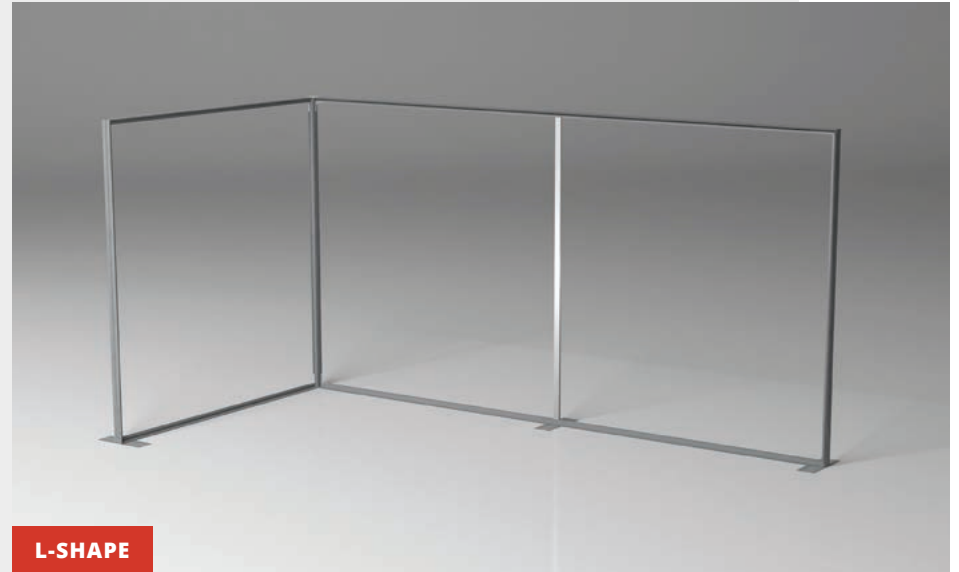


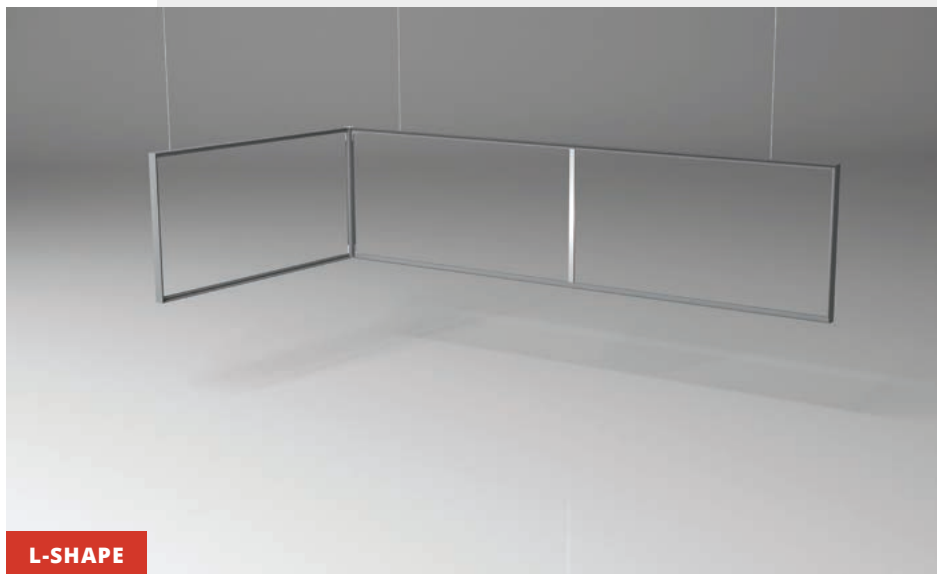
3. PLACE THE PRINT

First attach the silicone strip of the print to the corners, then press the print into the rest of the groove.

SHAPE

FREESTANDING

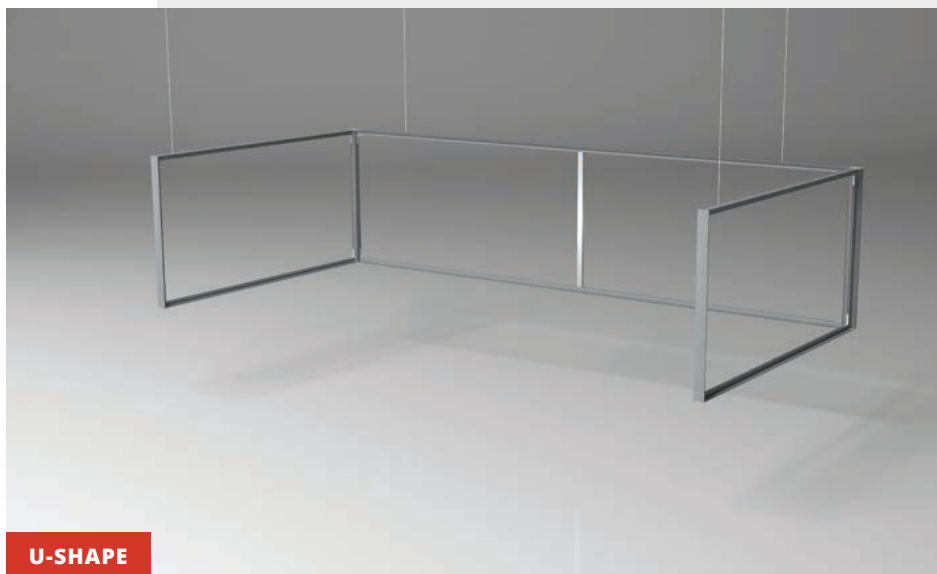




L-SHAPE

SHAPE

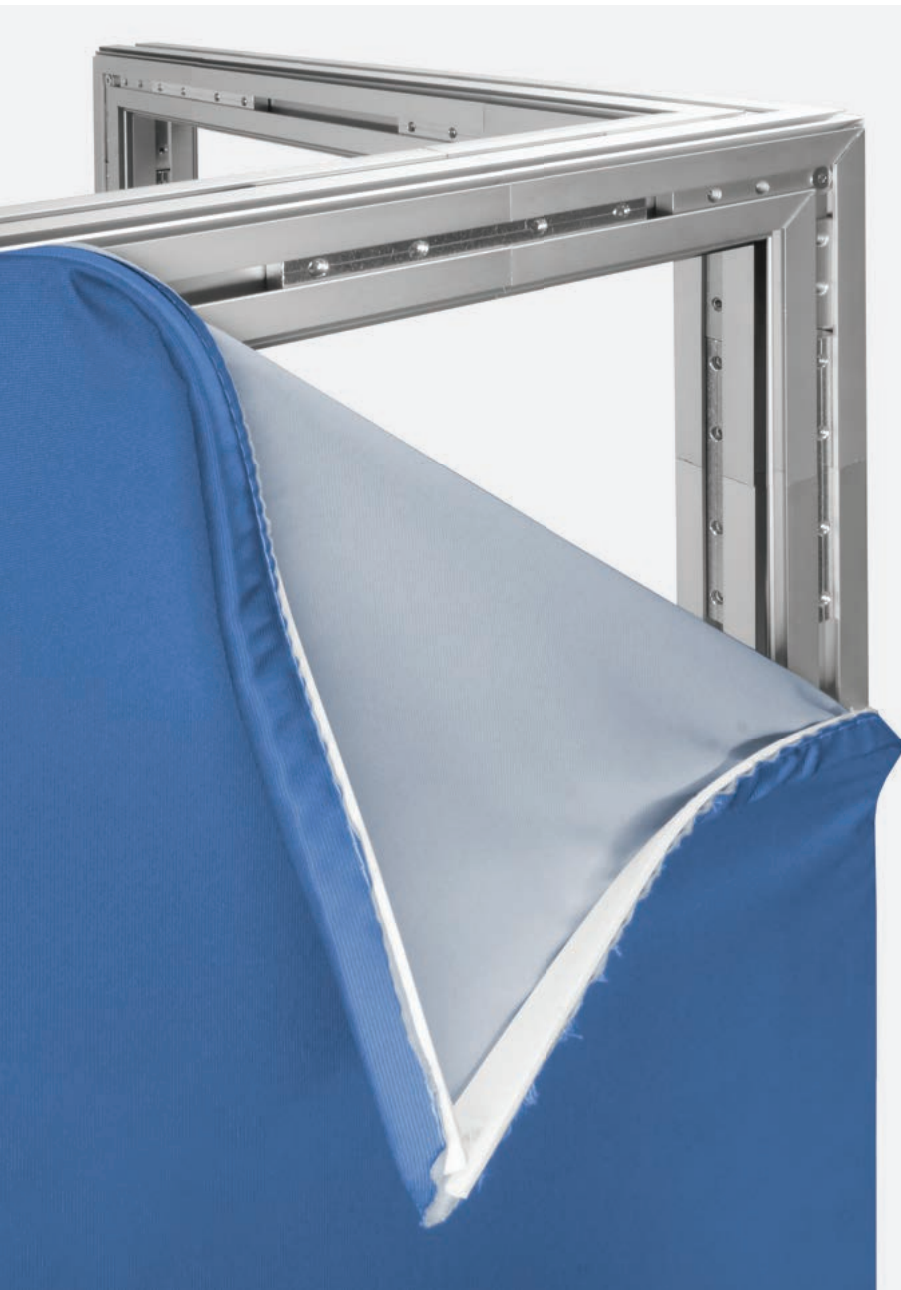
HANGING



U-SHAPE



O-SHAPE



3D FRAMES

QUATRO 50 HANGING & FREESTANDING

The **Quatro 50** is designed to be build unique and stable exhibition stands. This profile is designed to attach textile prints on all sides. Due to its shape, the Quatro 50 profile is strong. The profile is quick and easy to assemble. With the help of ceiling mounts it is possible to use the frame as a hanging banner.



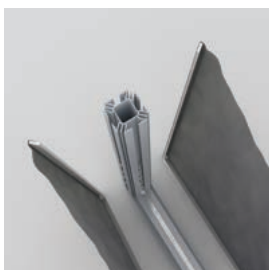
1. 2-WAY CONNECTOR

Use the 2-way connector as a two-sided corner piece.



2. CONNECT THE PROFILE

Connect the corner piece with the Quatro 50 profile and tighten the screws with the supplied allen key.



3. PLACE THE PRINT

First attach the silicone strip of the print to the corners, then press the print into the rest of the groove.



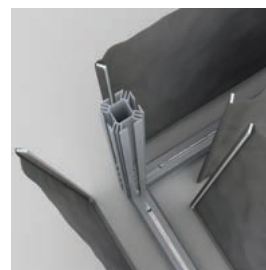
1. 3-WAY CONNECTOR

Use the 3-way connector as a three-sided corner piece.



2. CONNECT THE PROFILE

Connect the corner piece with the Quatro 50 profile and tighten the screws with the supplied allen key.

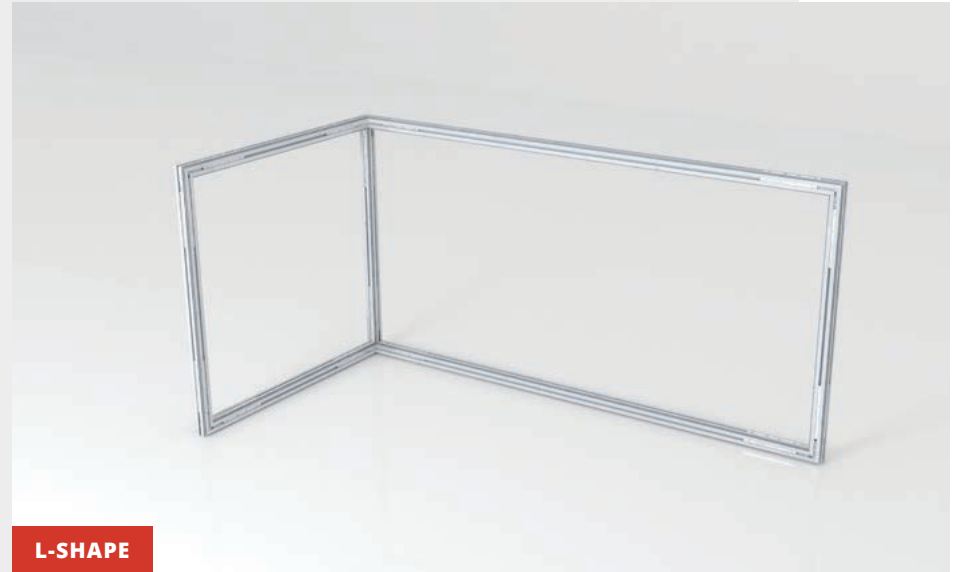


3. PLACE THE PRINT

First attach the silicone strip of the print to the corners, then press the print into the rest of the groove.

SETUP

FREESTANDING





L-SHAPE

SETUP

HANGING



U-SHAPE



O-SHAPE



3D FRAMES

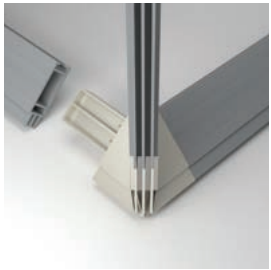
CUBE 65 **HANGING & FREESTANDING**

The **Cube 65** is specially designed to allow and show textile prints on all sides. The print fits seamlessly in the corners creating a perfect, sleek design.



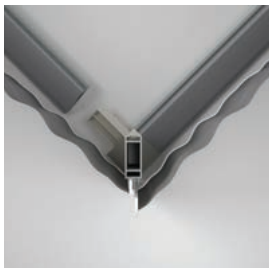
1. CUBE CORNER CONNECTOR

Use the cube corner connector as a three-sided corner piece.



2. CONNECT THE CORNERS

Connect the corner piece with the Cube 65.



3. PLACE THE PRINT

First attach the silicone strip of the print to the corners, then press the print into the rest of the groove.



FREESTANDING



HANGING



1.4



TEXTILE FRAMES

CURVED

Create impressive signage with curved frames. Make a statement and transform standard textile frames into exceptional objects. Use the curved frames as a unique hanging banner in the retail or as a spectacular curved back wall at exhibitions.



SIMPLE 19

Radius > 400mm



HEAVY 27

Radius > 400mm



DOUBLE 44

Radius > 500mm



DOUBLE 44 CLOSED

Radius > 500mm



DOUBLE 80

Radius > 500mm



DOUBLE 80 CLOSED

Radius > 500mm



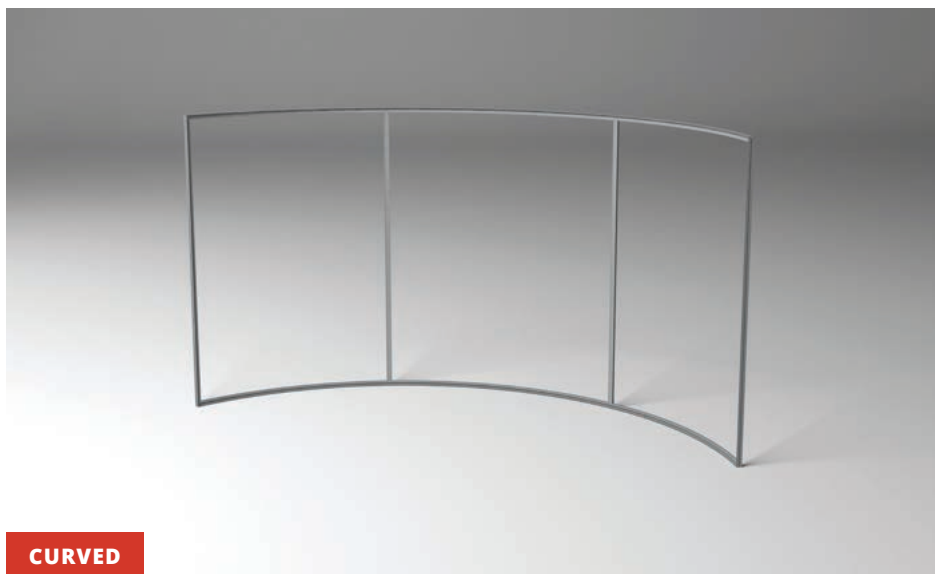
CURVED TEXTILE FRAME

SINGLE- AND DOUBLE-SIDED CURVED

A curved frame on the wall, freestanding or hanging from the ceiling, differs from the standard straight shapes. It is possible to bend single and double-sided aluminum frames.



CYLINDER



CURVED



CIRCLE

1.5



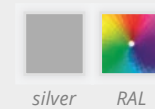
TEXTILE FRAMES

OUTDOOR

The **outdoor** system is an aluminum frame in which a large format print can be clamped. The outdoor profile has been developed for applying water-repellent textile prints for outdoor advertising. This innovative single-sided outdoor frame consists of two profiles, namely the "clamping profile" and a "cover profile". Clips are attached between the 'clamping profile' and the 'covering profile', which means that the covering profile could be easily opened and closed.



OUTDOOR 90

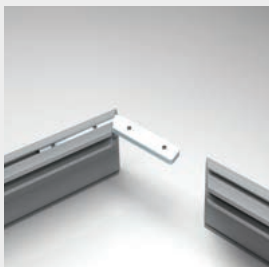




MONTAGE

MODULAR CONSTRUCTION

Thanks to the modular construction, the assembly of this textile frame is quick and easy. Place the textile print in the frame and connect the corner together. This modular frame is assembled in no time.



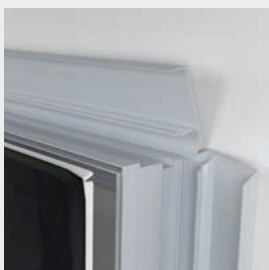
1. CONNECT THE CORNERS

Put the two different locksets together. Install the locksets in the appropriate groove and attach the miter cut lengths together.



2. PLACE THE FRAME

Attach the frame by drilling it to the wall.



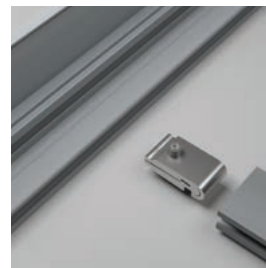
3. ATTACH THE TEXTILE PRINT

Open the frame and attach the silicone tendon in the corners of the groove. Then press the print into the rest of the groove.



4. CLOSE THE PROFILE

Close the covering profile so that the textile print is locked within the frame.



STRENGTHEN FRAME - *OPTIONAL*

To ensure stability of large sizes aluminum frames, stabilizers are mounted inside the frame to act like internal support beams.



OUTDOOR

WALL MOUNTING BY USING SCREWS

To attach the outdoor profile to a wall, it is possible to pierce the profile at multiple places. Then drill holes in the wall and fit the profile with plugs and screws.





LED FRAMES

A LED frame is a textile frame with LED lighting. A LED frame gives a room more dimension, more atmosphere and a modern look. The frame is available in any size because various LED technologies have been developed.



2.3 LED TECHNIQUES	54
2.2 SINGLE-SIDED	70
2.3 DOUBLE-SIDED	74
2.4 3D	80
2.5 POP-UP LEDBOX	86
2.6 DYNAMIC 3D	90

2.1



VARIOUS

LED TECHNIQUES

EFKA has developed various LED techniques. Depending on your wishes, there is always an LED frame that meets your needs. Let your message stand out with one of the offered LED techniques.

EFKA

THE SPECIALIST IN LED FRAMES

Due to years of experience, EFKA has developed various LED techniques. EFKA guarantees custom-made solutions and a fast delivery.



3 YEAR WARRANTY



CE-MARKING



CUSTOM MADE





EDGE-LIT



EDGE-LIT LED TECHNOLOGY

Edge-lit is pre-assembled and illuminates the textile print from the side.



OPTIONAL: BLOCKOUT FABRIC

Thanks to the use of a flexible reflective blockout fabric, there is a better light distribution.

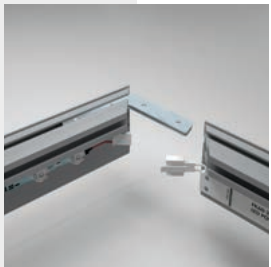


COMPACT TO TRANSPORT

Thanks to the modular construction, the frames are compactly packaged for transport.

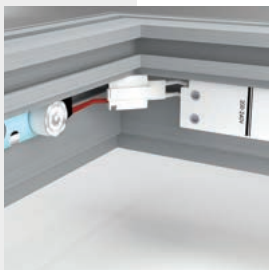
Official License





1. CONNECT THE CORNERS

Put the two different locksets together. Install the locksets in the appropriate groove and attach the miter cut lengths together.



2. CONNECT THE PLUGS

Put the pre-assembled LED-strips and drivers together.



3. PLACE BLOCKOUT FABRIC- *OPTIONAL*

Attach the blockout fabric into the inner groove. This fabric blocks the lights, so the textile prints is more visible.



4. PLACE THE FRAME

Attach the frame by drilling it to the wall or install wall mounts. Let the wall mount support the frame. Suspension from the ceiling is also an option.



5. ATTACH THE TEXTILE PRINT

First attach the silicone tendon in the corners of the groove. Then press the print into the rest of the groove.



STRENGTHEN FRAME - *OPTIONAL*

To ensure stability of large sizes aluminum frames, stabilizers are mounted inside the frame to act like internal support beams.



LED ON DIBOND



LED MOUNTED ON DIBOND

The LEDs are pre-mounted on a dibond plate, whereby the textile print is illuminated from the rear.



PERFECT LIGHT DISTRIBUTION

The wide angle lenses guarantee an even light distribution.



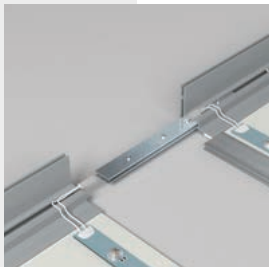
POSSIBLE TO DIM

With the pre-installed dimmer it is possible to control the brightness by using a remote control.



DALI READY

It is an option to make this LED frame compatible with DALI systems.



1. CONNECT THE PARTS

Place the extensionset in the designated groove and attach the dibond connector. Slide the parts together to connect the frame.



2. CONNECT THE PLUGS

Put the pre-assembled LED-strips and drivers together.



3. PLACE THE FRAME

Attach the frame to the wall by drilling through the dibond plate.



4. ATTACH THE TEXTILE PRINT

First attach the silicone tendon in the corners of the groove. Then press the print into the rest of the groove.



LED ON STABILIZER



LED MOUNTED ON STABILIZER

This technique illuminates textile prints from the rear with LED mounted on stabilizers.



SUITABLE FOR LARGE FRAMES

LED on stabilizer is recommended for large sizes to ensure an even light distribution.



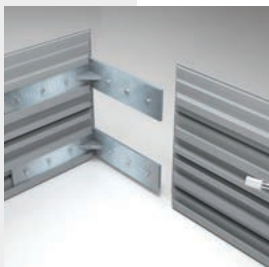
MODULAIR

Modular construction where LEDs are pre-assembled.



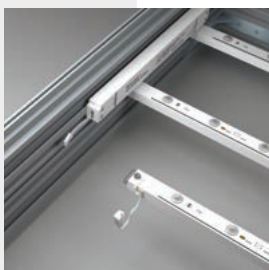
POSSIBLE TO DIM

With the pre-installed dimmer it is possible to control the light distribution by using a remote control.



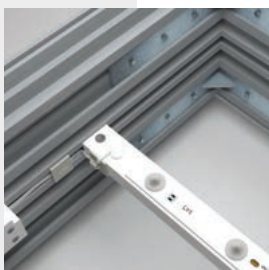
1. CONNECT THE CORNERS

Put the two different locksets together. Install the locksets in the appropriate groove and attach the miter cut lengths together.



2. INSTALL THE STABILIZERS

Place the stabilizers, with LED, at the indicated positions.



3. CONNECT THE PLUGS

Put the pre-assembled LED-strips and drivers together.



4. PLACE THE FRAME

Attach the frame by using wall mounts. Or place the frame freestanding or hanging with the appropriate installation options.



5. ATTACH THE TEXTILE PRINT

First attach the silicone tendon in the corners of the groove. Then press the print into the rest of the groove.

Which technique,
when to use? ↷

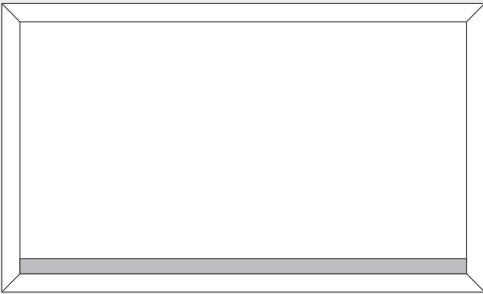


LED ADVICE

HEIGHT: <0.5 METER WIDTH: INFINITE

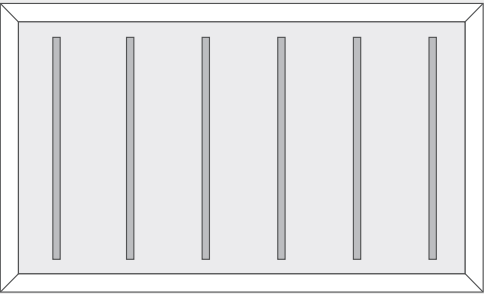
When choosing the right LED technology, the environment where the display will be utilised must be taken into account. For example: An LED frame is placed in a shop window. It is important that the light distribution and the choice of the print are chosen well. The combination of these factors determines how smooth the image will ultimately be. When a dimmable frame is desirable, the Edge-lit technology is not an option

EDGE-LIT



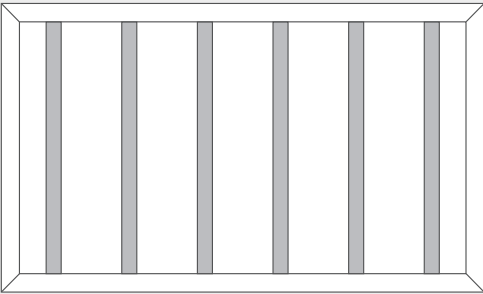
- ★☆☆☆☆ Lightbox 90
- ★★☆☆☆ Lightbox 120
- ★☆☆☆☆ Lightbox Double 100
- ★★☆☆☆ Lightbox Double 120
- ★★★☆☆ Lightbox Double 160
- ★★★★★ Lightbox Double 200

LED ON DIBOND



- ★★★★★ Lightbox 50
- ★★★★★ Lightbox 60
- ★★★★★ Lightbox Double 100

LED ON STABILIZER



- ★★★★★ Lightbox 120
- ★★★★★ Lightbox 200



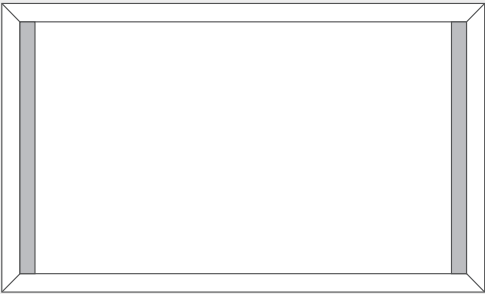
LED ADVICE

HEIGHT: > 0,5 METER

WIDTH: < 2 METER

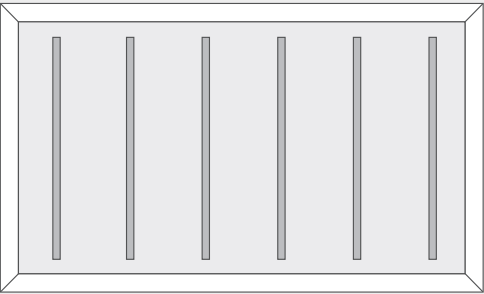
LED advice for small to medium-sized lightboxes. When a lightbox is square, the Edge-lit technique is a common solution. Given the relatively small size, it is also an option to go for LED on dibond.

EDGE-LIT



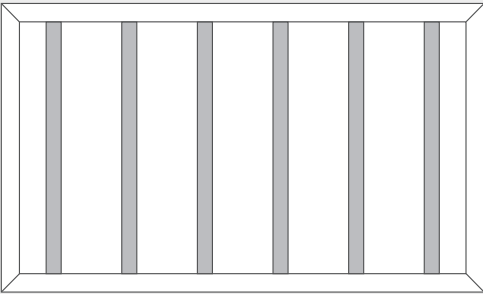
- ★★★★☆ Lightbox 90
- ★★★★☆ Lightbox 120
- ★★★★☆ Lightbox Double 100
- ★★★★☆ Lightbox Double 120
- ★★★★☆ Lightbox Double 160
- ★★★★☆ Lightbox Double 200

LED ON DIBOND



- ★★★★☆ Lightbox 50
- ★★★★★ Lightbox 60
- ★★★★★ Lightbox Double 100

LED ON STABILIZER



- ★★★★☆ Lightbox 120
- ★★★★★ Lightbox 200



LED ADVICE

HEIGHT: < 3 METER
WIDTH: > 2 METER

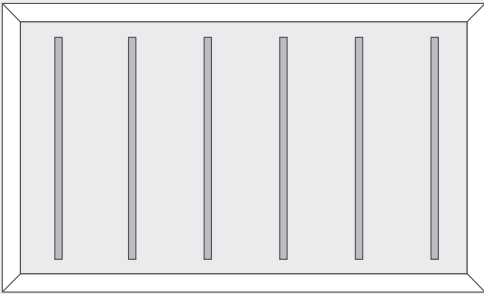
In these sizes, the Edge-lit technology often gives a good result and is compact to transport. When the chosen profile is wider, the Edge-lit technology also offers a good light distribution. With smaller profiles there is a chance of "shadow spots". To prevent this, it is better to go for the LED on stabilizer technology. This is still easy to transport but more expensive and offers an even more impressive result.

EDGE-LIT



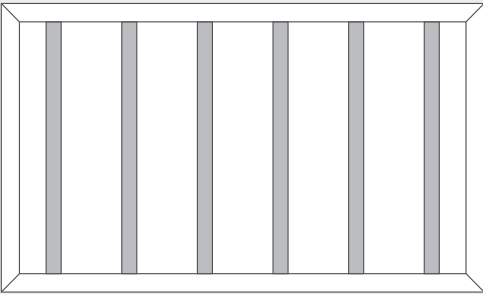
- ★☆☆☆☆ Lightbox 90
- ★★★★☆ Lightbox 120
- ★☆☆☆☆ Lightbox Double 100
- ★★★★☆ Lightbox Double 120
- ★★★★☆ Lightbox Double 160
- ★★★★☆ Lightbox Double 200

LED ON DIBOND



- ★★★★☆ Lightbox 50
- ★★★★★ Lightbox 60
- ★★★★★ Lightbox Double 100

LED ON STABILIZER



- ★★★★☆ Lightbox 120
- ★★★★★ Lightbox 200



LED ADVICE

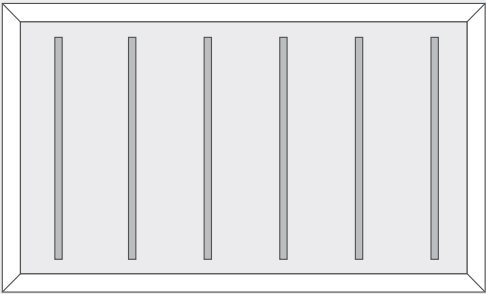
HEIGHT: > 3 METER **WIDTH: INFINITE**

The solution for these sizes, is the “LED on stabilizer”. By applying this technique, an even light distribution with sufficient power is created. It is also possible to apply the “LED on dibond” technique. This technique also gives large format frames a great illuminated result. The disadvantage of this technique is that the LED is placed on dibond plates, which makes the frame heavier.

EDGE-LIT

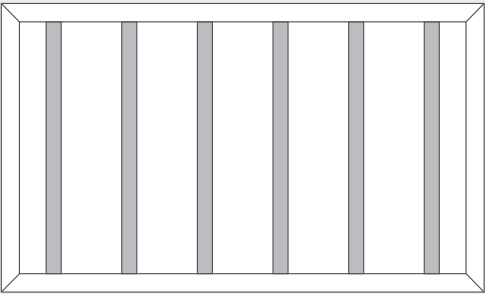


LED ON DIBOND



- ★★★★☆ Lightbox 50
- ★★★★★ Lightbox 60
- ★★★★★ Lightbox Double 100

LED ON STABILIZER



- ★★★★☆ Lightbox 120
- ★★★★★ Lightbox 200

2.2



LED FRAMES

SINGLE-SIDED

Single-sided LED frames are suitable for wall mounting.

The frames are often used as striking signage in retail and public spaces. Change the textile print and easily create a new expression.



LIGHTBOX 50

LED on dibond



LIGHTBOX 60 GROOVE

LED on dibond



LIGHTBOX 90

Edge-lit



LIGHTBOX 90 CLOSED

Edge-lit



LIGHTBOX 120

Edge-lit or LED on stabilizer



LIGHTBOX 120 CLOSED

Edge-lit or LED on stabilizer



silver

black

white

RAL



SINGLE-SIDED

WALLMOUNTING LED FRAMES

The LED frames could be mounted on the wall for a single-sided, illuminated advertisement. EFKA offers a suitable solution for each LED technology.

See page 134 for
all wallmounts ↗



2.3



LED FRAMES

DOUBLE-SIDED

EFKA's double-sided light boxes are easy to assemble. Make a striking visual display in shops, in showrooms or during exhibitions. The light box ensures that a message is clearly visible night and day. The frame could be provided with two textile prints.



LIGHTBOX DOUBLE 100
Edge-lit



LIGHTBOX D. 100 CLOSED
Edge-lit



LIGHTBOX D. 100 DIBOND
LED on dibond



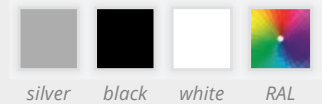
LIGHTBOX DOUBLE 120
Edge-lit



LIGHTBOX DOUBLE 160
Edge-lit



LIGHTBOX DOUBLE 200
Edge-lit or LED on stabilizer





OPTION 1

HANGING OPTIONS

Create eye-catching hanging LED illuminated banners and displays that are perfect in any showroom or above any exhibition stand by using ceiling mounts.

See page 135 for
all ceiling mounts ↗



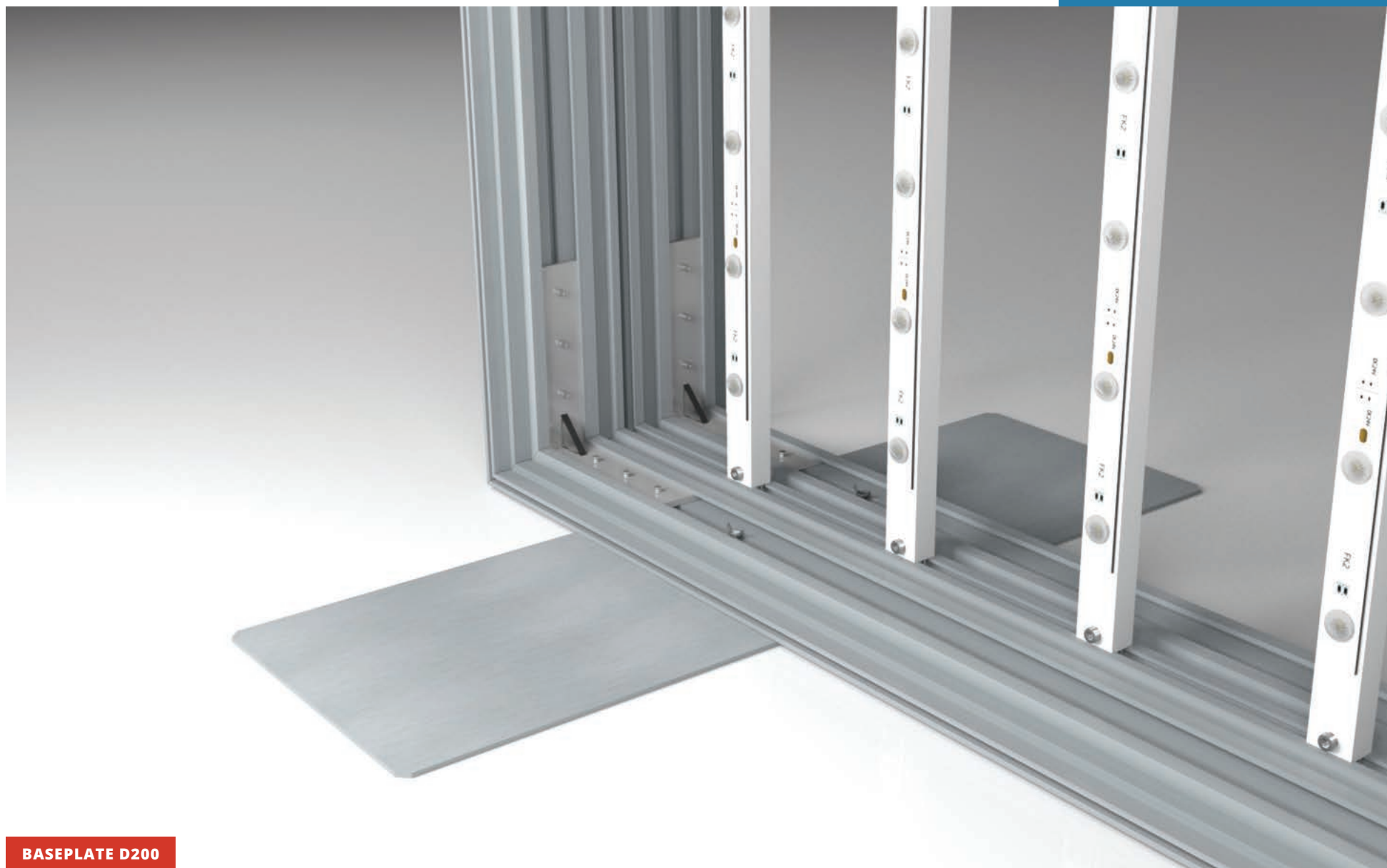


OPTION 2

FREESTANDING OPTIONS

Make eye-catching displays, standing banners or exhibition walls with the baseplates. The baseplate acts as a footrest under the aluminum LED frames.

See page 132
for all baseplates ↗



BASEPLATE D200

2.4



LED FRAMES

3D CARRE 160

With the **Carre 160** you create a modular and eye-catching 3D LED frame. The installed textile print is visible from multiple sides and perfect for both hanging and freestanding use. This modular construction is perfect for creating 3D illuminated exhibition stands.



CARRE 160

Corner



LIGHTBOX DOUBLE 160



3D LED FRAME

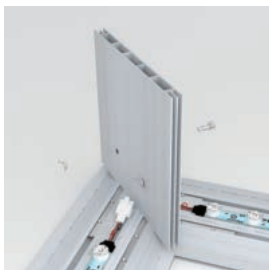
CARRE 160 **FREESTANDING & HANGING**

With the **Carre 160** it is possible to create 3D illuminated freestanding and hanging frames. Baseplates are not needed when the **Double 160** is used in combination with the Carre 160. Any size is possible by using stabilizers. Create an illuminated hanging banner by using ceiling mounts.



1. CONNECT THE CORNERS

Put the two different locksets together. Install the locksets in the appropriate groove and attach the miter cut lengths together.



2. PLACE THE CARRE 160

Place the Carre 160 on the vertical part of the lockset and attach the Carre 160 and Double 160 with the supplied mounting set.

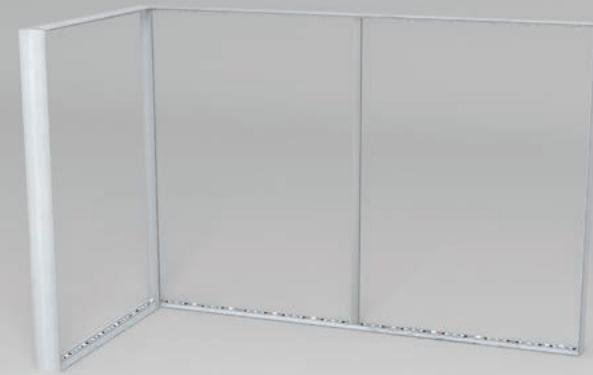


3. ATTACH THE TEXTILE PRINT

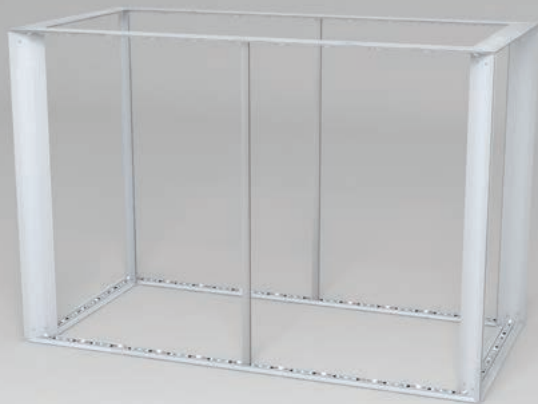
First attach the silicone tendon in the corners of the groove. Then press the print into the rest of the groove.

SHAPES

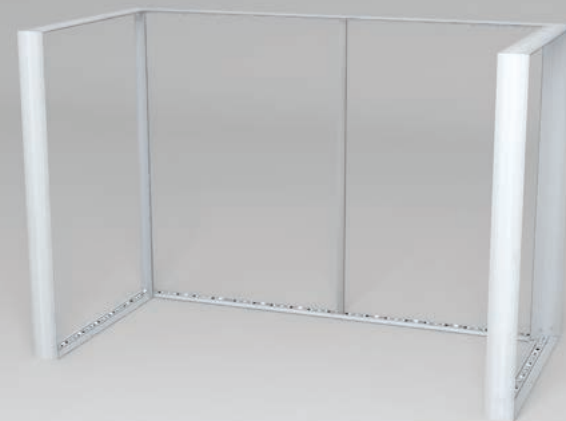
FREESTANDING



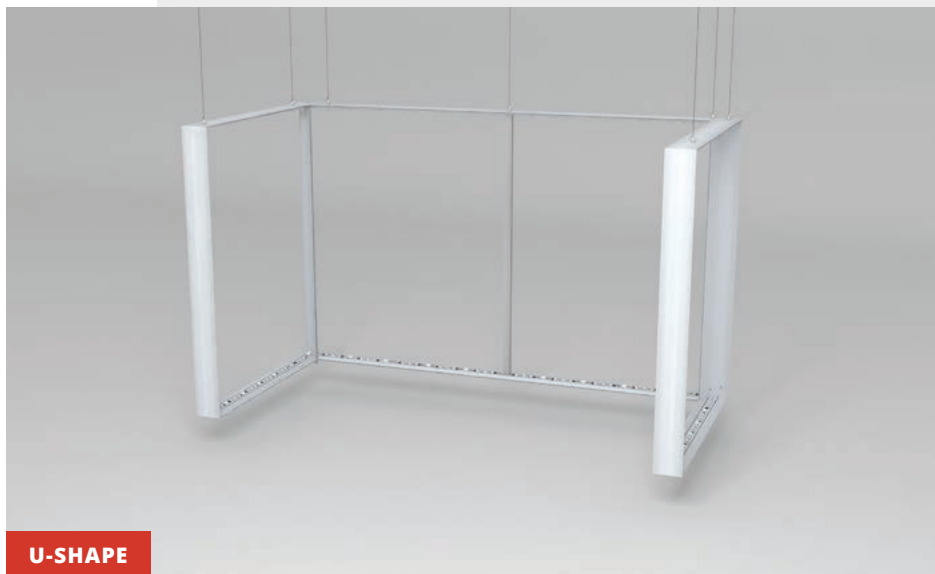
L-SHAPE



O-SHAPE

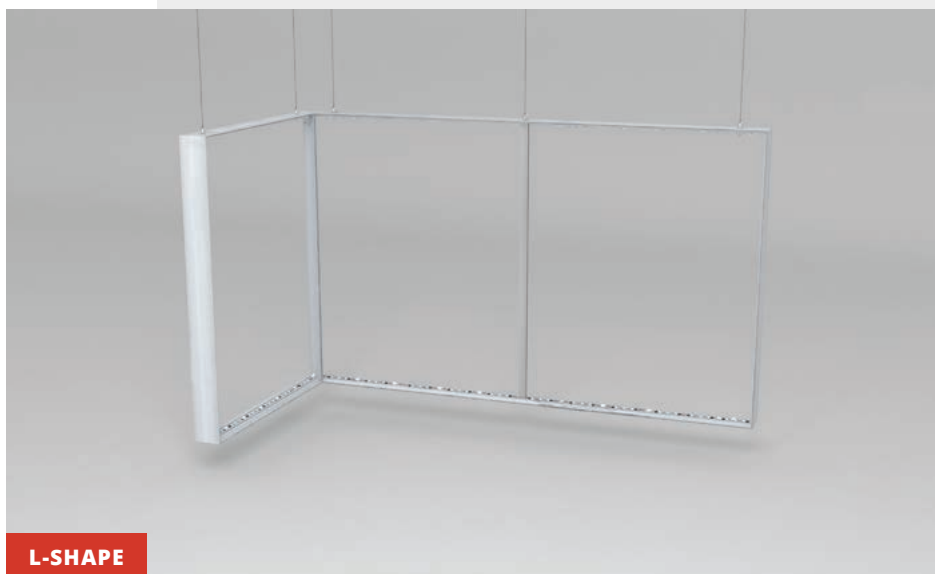


U-SHAPE



SHAPES

HANGING



2.5



LED FRAMES

POP-UP LEDBOX

The **Pop-up LEDbox** is a compact and modular double-sided frame. The Pop-up LEDbox is ideal to use as an alternative for a roll-up banner, pop-up wall, or mobile display on temporarily locations. The Pop-up LEDbox could also be provided with two textile prints.



POP-UP LEDBOX

1000x2000mm

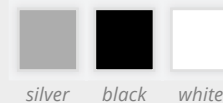


POP-UP LEDBOX XL

1000x2500mm



TROLLEY



silver black white



MODULAR LIGHTBOX

POP-UP LEDBOX

The Pop-up LED box can be assembled in 5 steps, without any tools.

Easily create a dynamic exhibition stand or display combining the aluminum frames by linking them together. The Pop-up LED box is supplied in a portable box or trolley.



1. TURN THE BASEPLATES

Turn the two base plates that are attached to the bottom of the frame.



2. CONNECT THE BOTTOM CORNERS AND CABLE

Mount the two lower vertical parts of the frame on the lower frame and snap the corners into place with the pre-mounted mounting system.



3. CONNECT THE TOP CORNERS

Now assemble the three upper frame parts together to create a U-shape. Use the numbering on the frame as guideline.



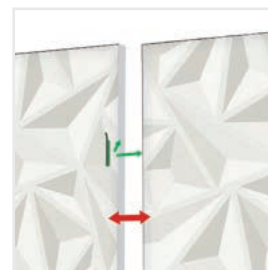
4. PLACE TOP ON BOTTOM

Place the mounted U-frame on top of the bottom frame and make sure to connect the lighting units.



5. INSTALL THE GRAPHIC

Place the silicone strip of the textile fabric in the corners and then press the silicone strip into the appropriate groove.



MULTIPLE FRAMES - OPTIONAL

Combine and link multiple frames with the supplied connectors.

2.6



LED FRAMES

DYNAMIC

With the **Lightbox 120** dynamic you are able to let your textile print “come to live”. This will be achieved with the help of a video animation that controls each LED light behind the screen individually. In this way, a part (or whole) of the textile fabric could be illuminated in their own special way.



LIGHTBOX 120

Dynamic



LIGHTBOX 120 CLOSED

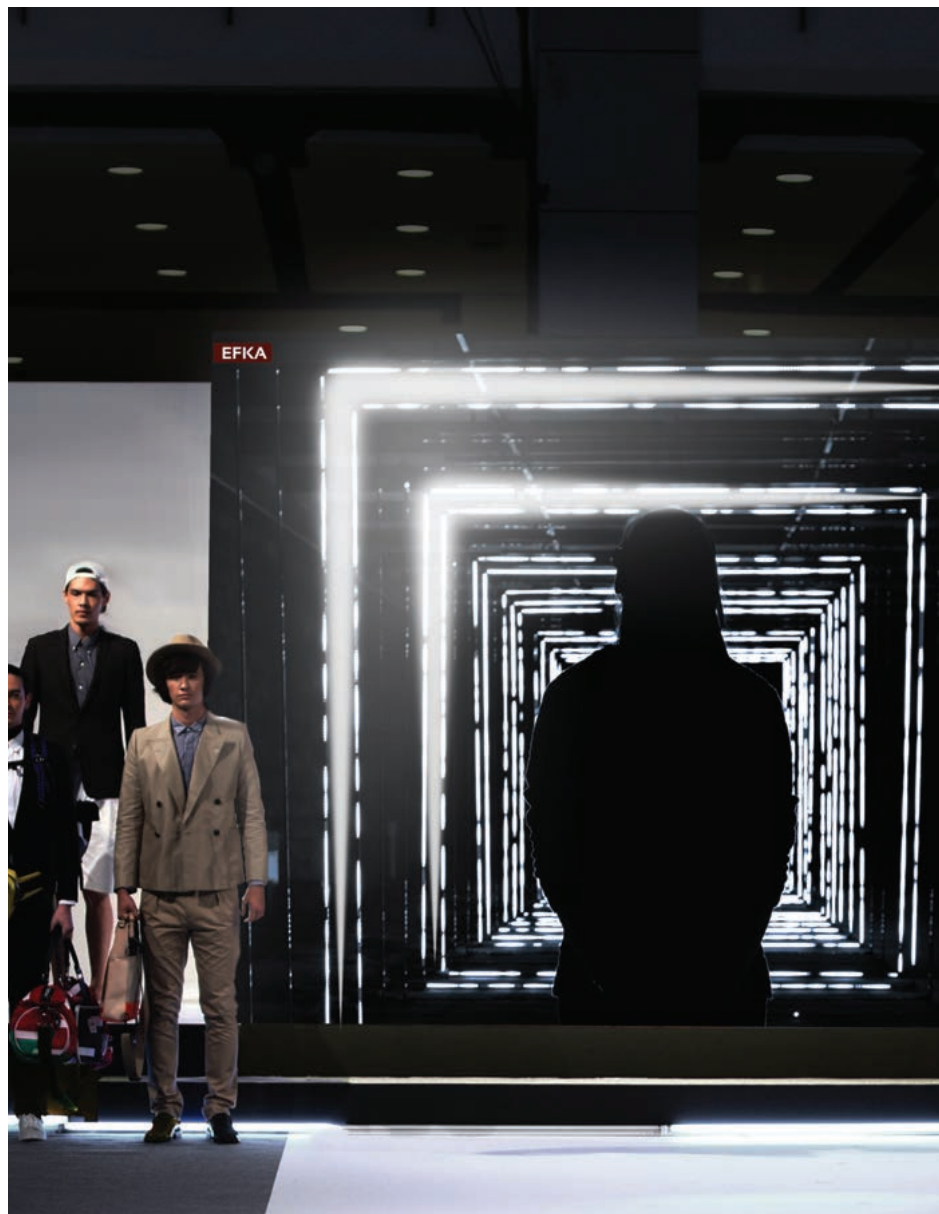
Dynamic



ANIMATIONS

LIGHTBOX DYNAMIC

With the help of the pre-programmed animation, an advertisement can be brought to someone's attention. With this dynamic light box, each LED panel can be controlled separately, making it seems the sublimation print is coming to life.





ADDITIONAL FRAMES

In addition to textile frames and LED frames, there are also other aluminium profiles. These profiles aren't suitable for textile prints with a silicone strip.



3.1	PANEL HANGING	92
3.2	L-SHAPES	94
3.3	CORD 43	96

3.1



PANEL FRAMES

PANEL HANGING

Place a panel hanging behind the printed material to give the print a floating effect. Attach the panel hanging to the wall and create a special appearance.



PANEL HANGING 18

3.2



PANEL FRAMES

L-SHAPES

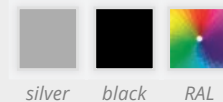
The frame gives a modern and exclusive look to a print on material or canvas.



L-SHAPE 17,8



L-SHAPE 30



3.3



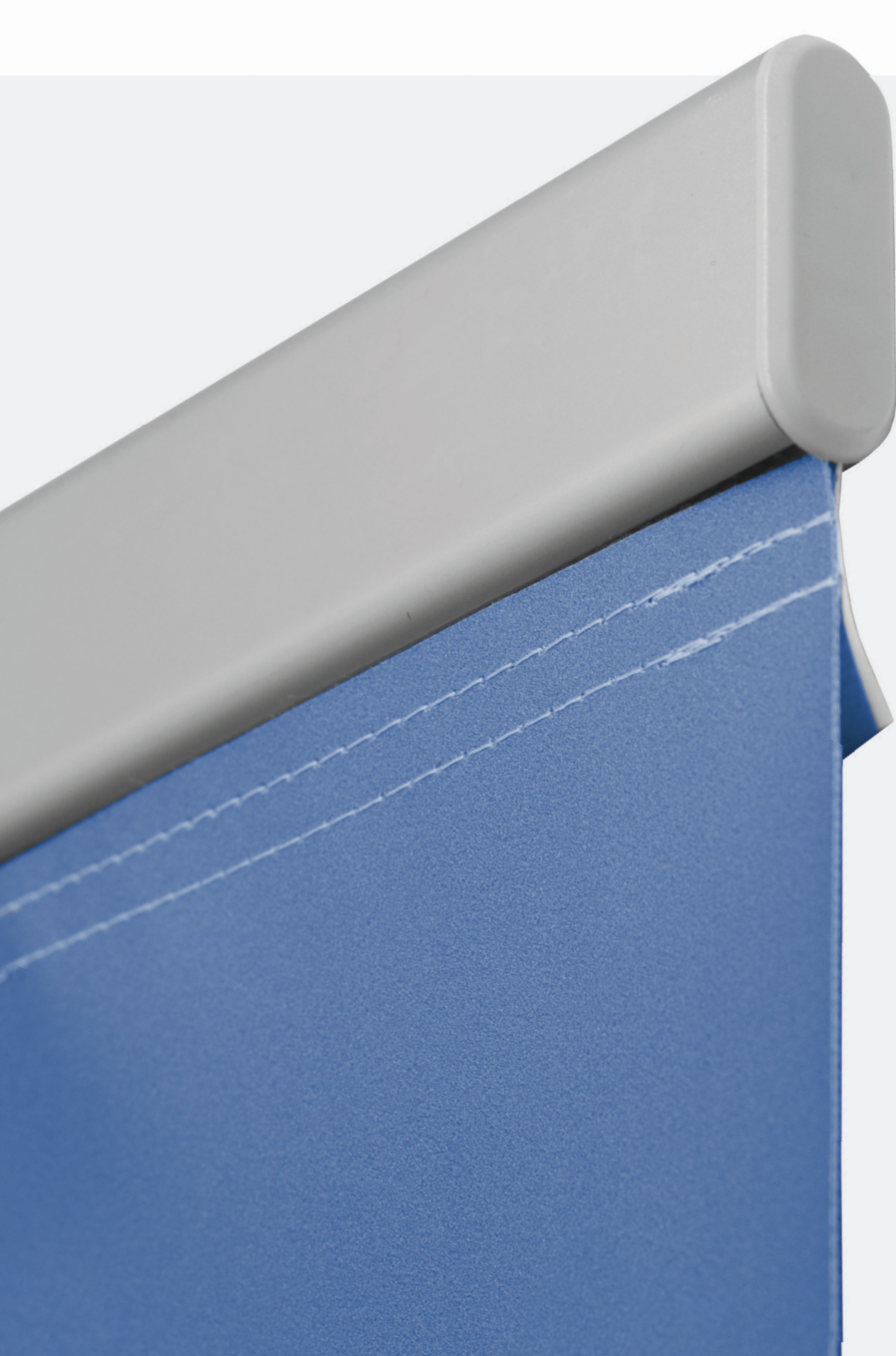
KEDER FRAMES

CORD 43

With the **Cord 43** it is possible to make hanging banners easily. Only two aluminum Cord 43 profiles are required for this. It is also possible to bend these profiles. The endcap ensures that the fabric stays in place.



CORD 43



OPTION

HANGING KEDER FRAME

This frame could be provided with a textile print with a keder tendon. The print with the flexible thick tendon is placed in the aluminum frame and closed with an endcap. The keder must have a minimum thickness of 7.5mm and a maximum thickness of 13.0mm, so the print could be placed.





DETAILS & INFO

This is a chapter with details and information about all of EFKA's accessories. Read how acoustic material could be placed in a frame and which accessories you need to use to extend a frame.



4.1	LARGE FRAMES	102
4.2	ACOUSTIC SOLUTION	107

4.1



EVERY SIZE POSSIBLE

LARGE FRAMES

Extension sets and stabilizers are used with large aluminum frames. The stabilizers guarantee extra stability.

EXTEND A FRAME WITH

EXTENSION SETS

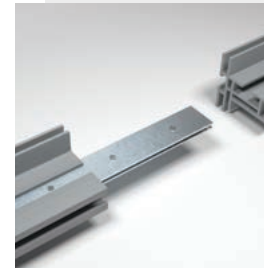
Frames with lengths above 4000 mm are usually supplied in two or several parts and can be easily put together with the corresponding extension set.

Extension sets are easy to mount and applicable on almost all aluminium profiles.



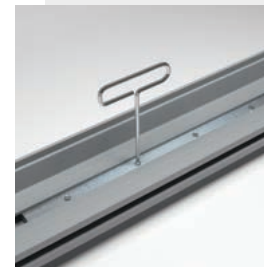
1. CONNECT THE PARTS

Place two separate loose parts of the extension set on each other.



2. CONNECT THE FRAMES

Place the extension set in the appropriate groove and slide the individual frames together.



3. TIGHTEN THE SCREWS

After the frames have been pushed together, the screws must be tightened with the supplied allen key.



REINFORCE THE FRAME WITH

STABILIZERS

Stabilizers are used with large format aluminum frames. To guarantee extra stability and a strong frame, a sufficient amount stabilizers must be applied.

STABILIZER OPTIONS





1. CONNECT THE LOCKS STABILIZER

Slide the locks stabilizer into the stabilizer and insert the screw through the hole at the top to secure the lockset.



2. CONNECT THE FRAMES

Slide the stabilizer including locks stabilizer into the appropriate groove with untightened screw.



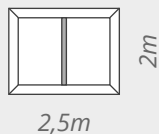
3. TIGHTEN THE SCREW

Tighten the lockset screw to connect the stabilizer to the aluminum frame.

STABILIZER ADVICE

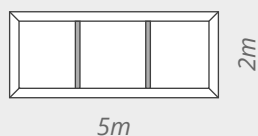
Frame length	Stabilizer(s)
< 2 meter	0
2 - 2,5 meter	1 recommended
2,5 - 4 meter	1 required
4 - 5 meter	2 recommended
5 - 6,5 meter	2 required
6,5 - 7,5 meter	3 recommended
7,5 - 9 meter	3 required
9 - 10,5 meter	4 recommended
10,5 - 12 meter	4 required
12 - 13 meter	5 recommended
13 - 14,5 meter	5 required
14,5 - 15,5 meter	6 recommended
15,5 - 17 meter	6 required

STABILIZER ADVICE



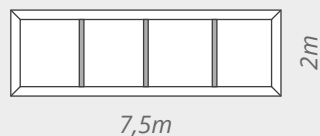
1. STABILIZER LONG SIDE

At 2 - 2.5 meters, the use of a stabilizer is recommended. Use one stabilizer when the long side of the frame has a length of 2.5 to 4 meters.



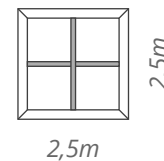
2. STABILIZERS LONG SIDE

Two stabilizers are recommended for a length of 4 - 5 meters. Two stabilizers are required from 5 - 6.5 meters.



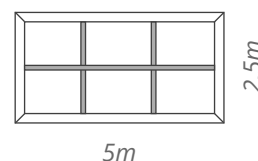
3. STABILIZERS LONG SIDE

The use of three stabilizers is recommended with a length of 6.5 - 7.5 meters. Three stabilizers are required with a length of 7.5 - 9 meters.



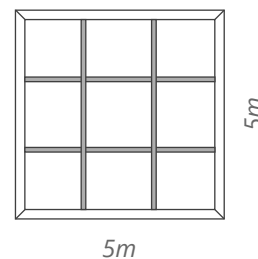
4. STABILIZER CROSS

For frames with a length and width between 2 - 2.5 meters, two stabilizers are recommended. Two stabilizers are required for frames up to 4 meters.



5. STABILIZER DOUBLE CROSS

When one side of the frame is larger than 2 meters and the other side above 4 meters, three stabilizers are recommended.



6. STABILIZER QUATRO

If both sides of the frame are larger than 4 meters, two stabilizers on each side are recommended.

SOUNDPROOF MATERIAL

ACOUSTIC

Improve acoustics and reduce reverberation. Mount the frame with sound-absorbing material on the wall or use it as a room divider.

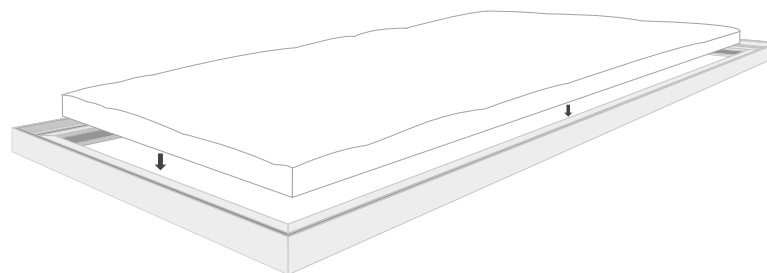




SOUNDPROOF MATERIAL

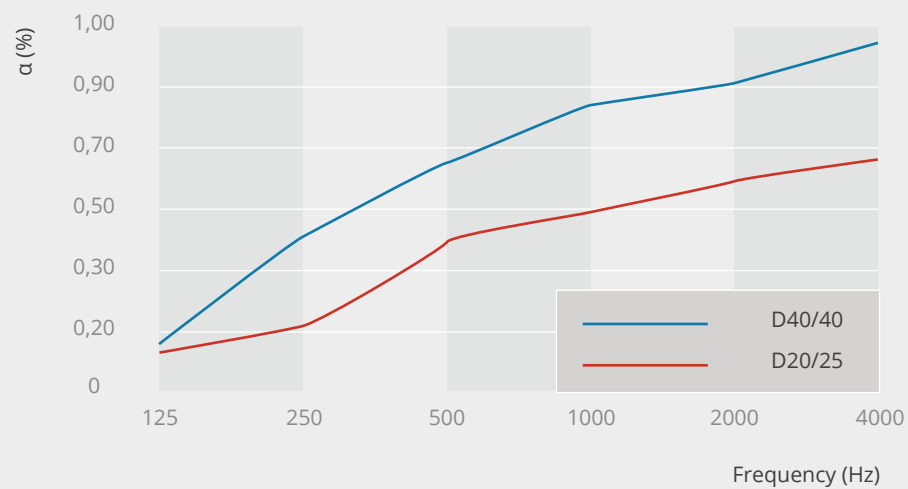
THERM ACOUSTIC

Therm Acoustic is made of polyester fibers (PET bottles) of which 60% comes from recycling. It contains no toxic substances. Tested in accordance with Oeko-Tex standard 100, report no. 94.0.0541.



ABSORPTION VALUES

With three different types of sound-absorbing material, there is always a suitable solution to reduce the sound. See the table below for the results.



FK-8930

Therm acoustic D20/10

☆☆☆☆☆ Light absorption

Values: Undefined

Thickness: 10 mm



FK-8910

Therm acoustic D20/25

★★★★☆ Excellent absorption

NRC = 0,45; α = 0,45

Thickness: 25 mm



FK-8920

Therm acoustic D40/40

★★★★★ Best absorption

NRC = 0,75; α = 0,70

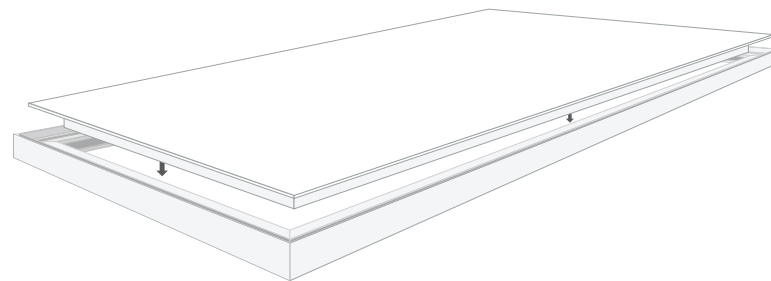
Thickness: 40 mm



SOUNDPROOF MATERIAL

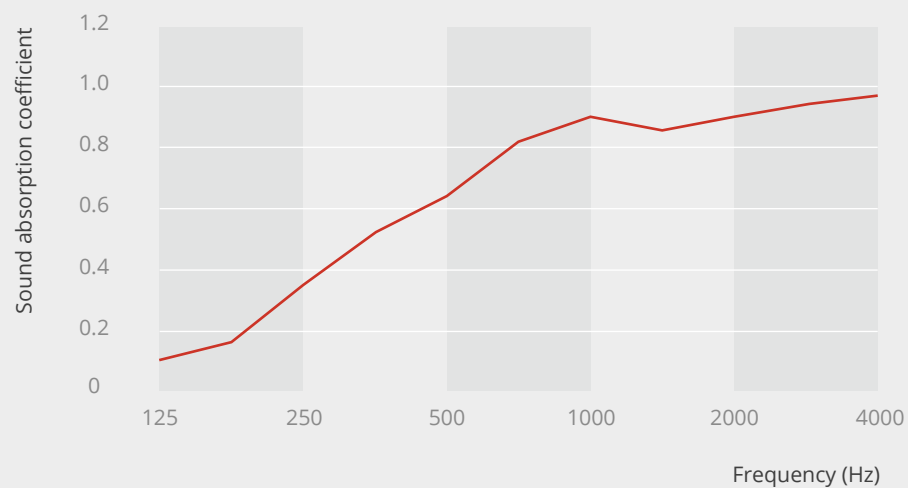
BASOTECT

Basotect® is a versatile and high-quality melamine resin foam. It is produced without hydrocarbons, flame retardants and/or toxic heavy metals. The product does not contaminate the water and is provided with the OEKO-TEX Standard 100 certificate.



ABSORPTION VALUES

With three different types of finishes, there is always a suitable solution to reduce the sound. See the table below for the result.



FK-8950

Basotect finish 1

★★★★★ Best absorption

SAC = >90% / D=45mm / f=2000Hz

Thickness: 45 mm



FK-8950

Basotect finish 2

★★★★★ Best absorption

SAC = >90% / D=45mm / f=2000Hz

Thickness: 45 mm



FK-8950

Basotect finish 3

★★★★☆ Excellent absorption

SAC = >90% / D=45mm / f=2000Hz

Thickness: 45 mm



LED COMPONENTS



LEDSTRIPS



AF90-015

- i Poweredled CREE
- + 470 x 25 x 15mm
- 6500-7000k White
- ⚡ 9 lenses 2.7W / 24V
- ≡ Not dimmable



AF90-016

- i Poweredled CREE
- + 157 x 25 x 15mm
- 6500-7000k White
- ⚡ 3 lenses 2.7W / 24V
- ≡ Not dimmable



AF90-017

- i Poweredled CREE
- + 313 x 25 x 15mm
- 6500-7000k White
- ⚡ 6 lenses 2.7W / 24V
- ≡ Not dimmable



AF90-035

- i Poweredled CREE
- + 470 x 25 x 15mm
- 6500-7000k White
- ⚡ 9 lenses 2.1W / 24V
- ≡ Not dimmable



AF90-040

- i Poweredled CREE
- + 157 x 25 x 15mm
- 6500-7000k White
- ⚡ 3 lenses 2.1W / 24V
- ≡ Not dimmable



AF90-045

- i Poweredled CREE
- + 313 x 25 x 15mm
- 6500-7000k White
- ⚡ 6 lenses 2.1W / 24V
- ≡ Not dimmable



AF92-005

- i FK7 Led strip
- + 160 x 20 x 8,5mm
- 6500-7000k White
- ⚡ 2 lenses 3.2W / 24V
- ≡ Dimmable



AF92-010

- i FK7 Led strip
- + 240 x 20 x 8,5mm
- 6500-7000k White
- ⚡ 3 lenses 3.2W / 24V
- ≡ Dimmable



AF92-015

- i FK7 Led strip
- + 480 x 20 x 8,5mm
- 6500-7000k White
- ⚡ 6 lenses 6.4W / 24V
- ≡ Dimmable



AF92-020

- i FK7 Led strip
- + 960 x 20 x 8,5mm
- 6500-7000k White
- ⚡ 12 lenses 15W / 24V
- ≡ Dimmable



AF92-405

- i FK2C-Led strip
- + 130 x 16 x 8,5mm
- 6500-7000k White
- ⚡ 2 lenses 1,44W / 24V
- ≡ Dimmable



AF92-407

- i FK2C-Led strip
- + 210 x 16 x 8,5mm
- 6500-7000k White
- ⚡ 3 lenses 2,88W / 24V
- ≡ Dimmable



AF92-410

- i FK2C-Led strip
- + 290 x 16 x 8,5mm
- 6500-7000k White
- ⚡ 4 lenses 2,88W / 24V
- ≡ Dimmable



AF92-412

- i FK2C-Led strip
- + 370 x 16 x 8,5mm
- 6500-7000k White
- ⚡ 5 lenses 4,32W / 24V
- ≡ Dimmable



AF92-415

- i FK2C-Led strip
- + 450 x 16 x 8,5mm
- 6500-7000k White
- ⚡ 6 lenses 4,32W / 24V
- ≡ Dimmable



AF92-420

- i FK2C-Led strip
- + 930 x 16 x 8,5mm
- 6500-7000k White
- ⚡ 12 lenses 8,6W / 24V
- ≡ Dimmable

DRIVERS



AF99-146

- i FK150-24VF-1 adapter
- ⚡ 150W / 24V



AF99-338-WC

- i FK30-24VF-2 adapter
- ⚡ 30W / 24V
- 🔌 With cables



AF99-340

- i FK60-24VF-2 adapter
- ⚡ 60W / 24V



AF99-340-BP

- i FK60-24VF-2 adapter
- ⚡ 60W / 24V
- 📦 Bulk packaged



AF99-340-WC

- i FK60-24VF-2 adapter
- ⚡ 60W / 24V
- 🔌 With cables



AF99-342

i FK75-24VF-2 adapter
 ♀ 75W / 24V



AF99-342-BP

i FK75-24VF-2 adapter
 ♀ 75W / 24V
 📦 Bulk packaged



AF99-342-WC

i FK75-24VF-2 adapter
 ♀ 75W / 24V
 🎧 With cables



AF99-344

i FK100-24VF-2 adapter
 ♀ 100W / 24V



AF99-344-BP

i FK100-24VF-2 adapter
 ♀ 100W / 24V
 📦 Bulk packaged



AF99-344-WC

i FK100-24VF-2 adapter
 ♀ 100W / 24V
 🎧 With cables

CONTROLLERS



AF92-220

i LED dimmer controller
 12-24VDC 3Ax3Chan



AF92-230

i M1 remote controller
 for AF92-220



AF92-240

i RGB remote controller
 for AF92-250



AF92-250

i LED Controller DALI
 1x6A - LT-401-6A



AF99-112

i LED Power Repeater
 1*8A, 12-24Vdc

CABLES



AF99-114

• Repeater for RGB controller, 5A*3CH 15A



AF90-100

• Extension cable FK2C
↔ 1000mm



AF99-212

• Extension cable PWL
↔ 1000mm



FK-8200

• Wire cord clip (100pcs)
✚ 19 x 19 x 3,9mm



FK-8210

• Wire cord clip (100pcs)
✚ 19 x 19 x 8mm



FK-8220

• Wire cord clip (100pcs)
✚ 25 x 25 x 8,7mm



PRODUCT OVERVIEW



ECO 15

0,286 kilo/meter

Locksets:

FK-0210 / FK-0212

FK-0214 / FK-0218

Extensionsets:

FK-0510

15mm



NF-04150

↔ 6150mm

🔩 Silver



NF-21150

↔ 6150mm

🔩 Black



NF-04150PH

↔ 6150mm

🔩 Silver

⬢ Pre-drilled



NF-21150PH

↔ 6150mm

🔩 Black

⬢ Pre-drilled



NF-56150PH

↔ 6150mm

🔩 White

⬢ Pre-drilled

SIMPLE 19

0,318 kilo/meter

Locksets:

FK-0210 / FK-0212

FK-0214 / FK-0218

Extensionsets:

FK-0510

19mm



NF-04190

↔ 6150mm

🔩 Silver



NF-21190

↔ 6150mm

🔩 Black



NF-56190

↔ 6150mm

🔩 White



NF-04190PH

↔ 6150mm

🔩 Silver

⬢ Pre-drilled



NF-21190PH

↔ 6150mm

🔩 Black

⬢ Pre-drilled



NF-56190PH

- ↔ 6150mm
- 🔩 White
- ⚙️ Pre-drilled

SLIM 25

⚖️ 0,476 kilo/meter

⚙️ Locksets:
FK-0214

Extensionsets:
FK-0510



NF-04250

- ↔ 6150mm
- 🔩 Silver



NF-21250

- ↔ 6150mm
- 🔩 Black



NF-56250

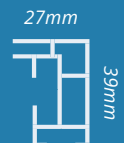
- ↔ 6150mm
- 🔩 White

HEAVY 27

⚖️ 0,677 kilo/meter

⚙️ Locksets:
FK-0200 / FK-0202
FK-0205 / FK-0430

Extensionsets:
FK-0500 / FK-0532



NF-04270

- ↔ 6150mm
- 🔩 Silver



NF-21270

- ↔ 6150mm
- 🔩 Black



NF-56270

- ↔ 6150mm
- 🔩 White

DECOR 27 XL 45

⚖️ 0,892 kilo/meter

⚙️ Locksets:
FK-0200 / FK-0202
FK-0205 / FK-0430

Extensionsets:
FK-0500 / FK-0532



NF-03450-XL

- ↔ 2600mm
- 🔩 Brushed silver



NF-16450-XL

↔ 2600mm

🔩 Glossy black



NF-56450-XL

↔ 6150mm

🔩 White

SLIM 33

⚖️ 0,472 kilo/meter

⚙️ Locksets:
FK-0210 / FK-0212
FK-0214 / FK-0218

Extensionsets:
FK-0510



NF-04330

↔ 6150mm

🔩 Silver

CABINET 30

⚖️ 0,286 kilo/meter

⚙️ Locksets:
FK-0260



NF-04340

↔ 6150mm

🔩 Silver

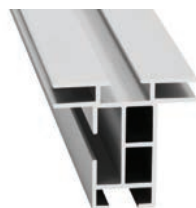
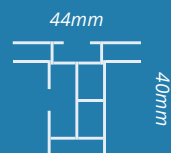
➡ Built-in

DOUBLE 44

⚖️ 0,785 kilo/meter

⚙️ Locksets:
FK-0200 / FK-0202
FK-0205 / FK-0430

Extensionsets:
FK-0500 / FK-0532



NF-04440

↔ 6150mm

🔩 Silver



NF-21440

↔ 6150mm

🔩 Black



NF-56440

↔ 6150mm

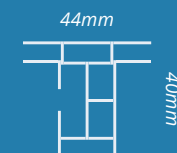
🔩 White

DOUBLE 44 CLOSED

⚖️ 0,815 kilo/meter

⚙️ Locksets:
FK-0200 / FK-0202
FK-0205 / FK-0430

Extensionsets:
FK-0500 / FK-0532



NF-04445

↔ 6150mm

🔩 Silver



NF-21445

↔ 6150mm

🔩 Black



NF-56445

↔ 6150mm

🔩 White



NF-03445

↔ 2600mm

🔩 Brushed silver

DOUBLE 49

⚖️ 1,155 kilo/meter

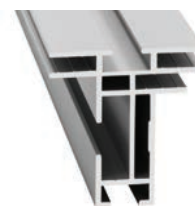
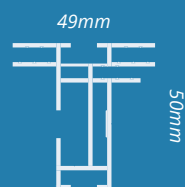
⚙️ Locksets:

FK-0200 / FK-0202

FK-0205 / FK-0430

Extensionsets:

FK-0500 / FK-0532



NF-04490

↔ 6150mm

🔩 Silver



NF-21490

↔ 6150mm

🔩 Black



NF-56490

↔ 6150mm

🔩 White

DOUBLE 49 CLOSED

⚖️ 1,171 kilo/meter

⚙️ Locksets:

FK-0200 / FK-0202

FK-0205 / FK-0430

Extensionsets:

FK-0500 / FK-0532

49mm



NF-04495

↔ 6150mm

🔩 Silver



NF-21495

↔ 6150mm

🔩 Black



NF-56495

↔ 6150mm

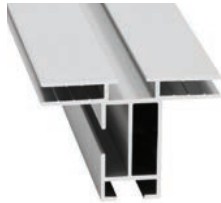
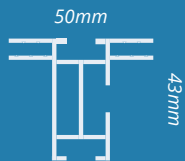
🔩 White

DOUBLE 50

⚖️ 0,987 kilo/meter

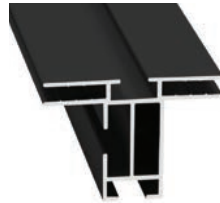
⚙️ Locksets:
FK-0200 / FK-0202
FK-0205 / FK-0430

Extensionsets:
FK-0500 / FK-0532



NF-04510

↔ 6150mm
🔩 Silver



NF-21510

↔ 6150mm
🔩 Black



NF-56510

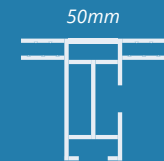
↔ 6150mm
🔩 White

DOUBLE 50 CLOSED

⚖️ 1,039 kilo/meter

⚙️ Locksets:
FK-0200 / FK-0202
FK-0205 / FK-0430

Extensionsets:
FK-0500 / FK-0532



NF-04515

↔ 6150mm
🔩 Silver



NF-21515

↔ 6150mm
🔩 Black



NF-56515

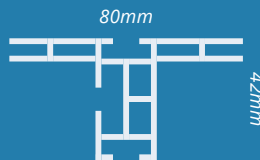
↔ 6150mm
🔩 White

DOUBLE 80

⚖️ 1,332 kilo/meter

⚙️ Locksets:
FK-0200 / FK-0202
FK-0205 / FK-0430

Extensionsets:
FK-0500 / FK-0532



NF-04800

↔ 6150mm
🔩 Silver



NF-21800

↔ 6150mm
🔩 Black



NF-56800

↔ 6150mm
🔩 White

DOUBLE 80 CLOSED

⚖️ 1,369 kilo/meter

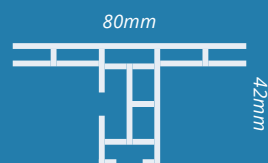
⚙️ Locksets:

FK-0200 / FK-0202

FK-0205 / FK-0430

Extensionsets:

FK-0500 / FK-0532



NF-04805

↔ 6150mm

🔩 Silver



NF-21805

↔ 6150mm

🔩 Black



NF-56805

↔ 6150mm

🔩 White

DOUBLE 100 CLOSED

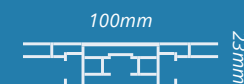
⚖️ 1,415 kilo/meter

⚙️ Locksets:

FK-0240

Extensionsets:

FK-0522



NF-041000

↔ 6150mm

🔩 Silver



NF-211000

↔ 6150mm

🔩 Black



NF-561000

↔ 6150mm

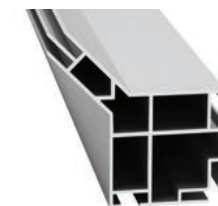
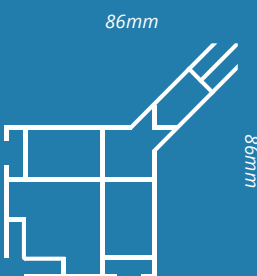
🔩 White

CARRE 80

⚖️ 2,206 kilo/meter

⚙️ Lockset: FK-0280

Endcap: FK-0725



NF-04810

↔ 6150mm

🔩 Silver

QUATRO 50

⚖️ 1,476 kilo/meter

⚙️ Corners:

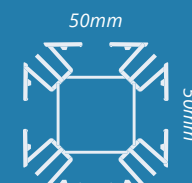
FK-0752 / FK-0753

Corner connectors:

FK-3050

Extensionsets:

FK-3054



OF-04500

↔ 6150mm

🔩 Silver

CUBE 65

0,879 kilo/meter

Lockset:
FK-0710

Extensionset:
FK-0715



NF-04650

↔ 6150mm

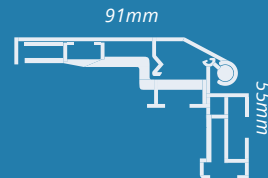
🔩 Silver

OUTDOOR 90

2,395 kilo/meter

Locksets:
FK-0200 / FK-0202
FK-0205 / FK-0430

Extensionsets:
FK-0500 / FK-0532



NF-04668

↔ 6150mm

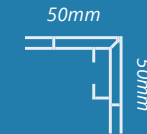
🔩 Silver

LIGHTBOX 50

0,968 kilo/meter

Locksets:
FK-0200 / FK-0202
FK-0205 / FK-0430

Extensionsets:
FK-0500 / FK-0532



NF-04502

↔ 6150mm

🔩 Silver



NF-21502

↔ 6150mm

🔩 Black



NF-56502

↔ 6150mm

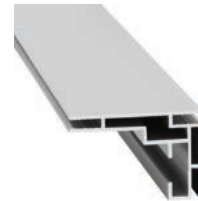
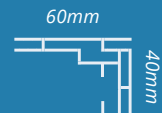
🔩 White

LIGHTBOX 60 GROOVE

1,018 kilo/meter

Locksets:
FK-0200 / FK-0202
FK-0205 / FK-0430

Extensionsets:
FK-0500 / FK-0532



NF-04604

↔ 6150mm

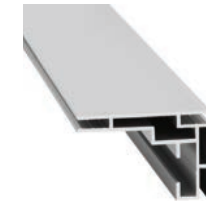
🔩 Silver



NF-21604

↔ 6150mm

🔩 Black



NF-56604

↔ 6150mm

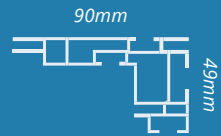
🔩 White

LIGHTBOX 90

⚖ 1,895 kilo/meter

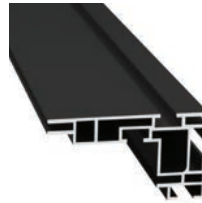
⚙ Locksets:
FK-0200 / FK-0202
FK-0205 / FK-0430

Extensionsets:
FK-0500 / FK-0532



NF-04900

↔ 6150mm
🔩 Silver



NF-21900

↔ 6150mm
🔩 Black



NF-56900

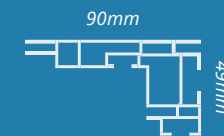
↔ 6150mm
🔩 White

LIGHTBOX 90 CLOSED

⚖ 1,934 kilo/meter

⚙ Lockset:
FK-0200 / FK-0202
FK-0205 / FK-0430

Extensionset:
FK-0500 / FK-0532



NF-04905

↔ 6150mm
🔩 Silver



NF-21905

↔ 6150mm
🔩 Black



NF-56905

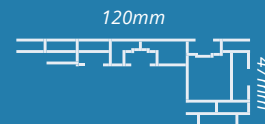
↔ 6150mm
🔩 White

LIGHTBOX 120

⚖ 2,221 kilo/meter

⚙ Lockset:
FK-0250

Extensionsets:
FK-0500 / FK-0532



NF-041200

↔ 6150mm
🔩 Silver



NF-211200

↔ 6150mm
🔩 Black



NF-561200

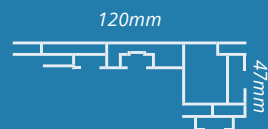
↔ 6150mm
🔩 White

LIGHTBOX 120 CLOSED

⚖️ 2,150 kilo/meter

⚙️ Lockset:
FK-0250

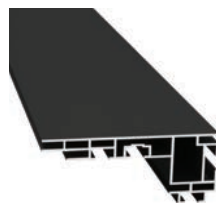
Extensionsets:
FK-0500 / FK-0532



NF-041205

↔ 6150mm

🔩 Silver



NF-211205

↔ 6150mm

🔩 Black



NF-561205

↔ 6150mm

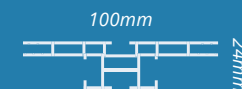
🔩 White

LIGHTBOX DOUBLE 100

⚖️ 1,347 kilo/meter

⚙️ Lockset:
FK-0240

Extensionset:
FK-0522



NF-041002

↔ 6150mm

🔩 Silver



NF-211002

↔ 6150mm

🔩 Black



NF-561002

↔ 6150mm

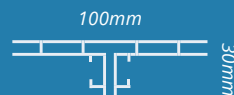
🔩 White

LIGHTBOX D. 100 DIBOND

⚖️ 1,258 kilo/meter

⚙️ Locksets:
FK-0240

Extensionsets:
FK-0510



NF-041005

↔ 6150mm

🔩 Silver



NF-211005

↔ 6150mm

🔩 Black



NF-561005

↔ 6150mm

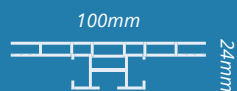
🔩 White

LIGHTBOX D. 100 CLOSED

⚖ 1,386 kilo/meter

⚙ Lockset:
FK-0240

Extensionset:
FK-0522



NF-041012

↔ 6150mm

🔩 Silver



NF-211012

↔ 6150mm

🔩 Black



NF-561012

↔ 6150mm

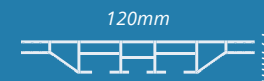
🔩 White

LIGHTBOX DOUBLE 120

⚖ 1,543 kilo/meter

⚙ Locksets:
FK-1200

Extensionset:
FK-0534



NF-041250

↔ 6150mm

🔩 Silver



NF-211250

↔ 6150mm

🔩 Black



NF-561250

↔ 6150mm

🔩 White

LIGHTBOX DOUBLE 160

⚖ 2,005 kilo/meter

⚙ Locksets:
FK-1200

Extensionset:
FK-0534



NF-041600

↔ 6150mm

🔩 Silver



NF-211600

↔ 6150mm

🔩 Black



NF-561600

↔ 6150mm

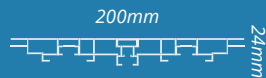
🔩 White

LIGHTBOX DOUBLE 200

⚖️ 2,873 kilo/meter

⚙️ Lockset:
FK-0230

Extensionset:
FK-0530



NF-042000

↔ 6150mm

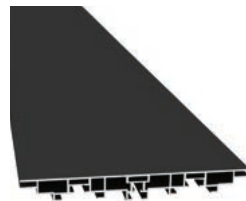
🔩 Silver



LC-21100200

⊕ 1000x2000mm

🔩 Black



NF-212000

↔ 6150mm

🔩 Black



NF-562000

↔ 6150mm

🔩 White

CARRE 160

3,458 kilo/meter

⚙️ Locksets:
FK-1200 / FK-0675

Extensionsets:
FK-0540



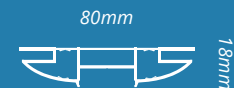
NF-041602

↔ 6150mm

🔩 Silver

POP-UP LEDBOX

⚖️ 9,5 kilo inclusief
doos



LC-04100200

⊕ 1000x2000mm

🔩 Silver



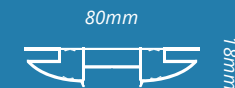
LC-56100200

⊕ 1000x2000mm

🔩 White

POP-UP LEDBOX XL

⚖️ 14 kilo inclusief
trolley



LC-04100250T

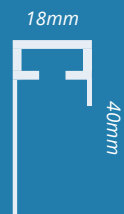
⊕ 1000x2500mm

🔩 Silver

PANEL HANGING

⚖️ 0,357 kilo/meter

⚙️ Lockset:
FK-0260



NF-04182

↔ 6150mm

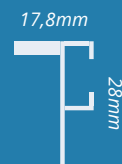
🔩 Silver

L-SHAPE 17,8

⚖️ 0,202 kilo/meter

⚙️ Locksets:
FK-0210 / FK-0212
FK-0214 / FK-0218

Extensionsets:
FK-0510



NF-04178

↔ 6150mm

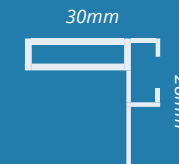
🔩 Silver

L-SHAPE 30

⚖️ 0,3 kilo/meter

⚙️ Locksets:
FK-0210 / FK-0212
FK-0214 / FK-0218

Extensionsets:
FK-0510



NF-04300

↔ 6150mm

🔩 Silver

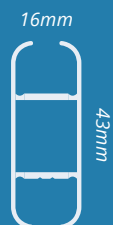


CORD 43

⚖️ 0,462 kilo/meter

⚙️ Accessoires:
FK-0605 / FK-0606
FK-0607 / FK-0608

Endcap:
FK-0604



NF-21300

↔ 6150mm

🔩 Black



NF-04434

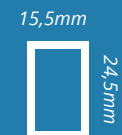
↔ 6150mm

🔩 Silver

MINI STABILIZER

⚖️ 0,338 kilo/meter

⚙️ Lockset:
FK-0220S



NF-56240

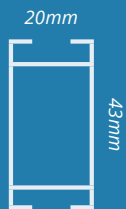
↔ 6150mm

🔩 White

STABILIZER 43

⚖️ 0,425 kilo/meter

⚙️ Locksets:
FK-0220 / FK-0222



NF-04438

↔ 6150mm

🔩 Silver



NF-56438

↔ 6150mm

🔩 White

DIBOND CONNECTOR

⚖️ 0,186 kilo/meter



NF-04280

↔ 6150mm

🔩 Silver



NF-56280

↔ 6150mm

🔩 White

ACOUSTICS



FK-8910

📏 Therm Acoustic D20/25

📏 Thickness 25mm

⚖️ Density 20kilo/m³

🔊 NRC 0,45 / α 0,45
(absorption class D)



FK-8920

📏 Therm Acoustic D40/40

📏 Thickness 40mm

⚖️ Density 40kilo/m³

🔊 NRC 0,75 / α 0,45
(absorption class D)



FK-8930

📏 Therm Acoustic D20/10

📏 Thickness 10mm

⚖️ Density 20kilo/m³



FK-8950

📏 Basotect

📏 Thickness 45mm

⚖️ Density 8-11kilo/m³

🔊 SAC = >90% / D=50mm /
f=2000Hz

LOCKSETS



FK-0200

i Locks *HEAVY + DOUBLE*
(set)



FK-0202

i Lockset heavy single
plate



FK-0205

i Lockset heavy short



FK-0210

i Locks *SIMPLE* (set)



FK-0212

i Lockset simply single
plate



FK-0214

i Lockset simply Large
single plate



FK-0218

i Lockset simply (Basic)
with allen key



FK-0220

i Lock Stabilizer (set)



FK-0220S

i Locks Mini Stabilizer



FK-0222

i Locks stabilizer 45°



FK-0230

i Locks D200 (set)



FK-0240

i Locks 100 (set)



FK-0250

i Lockset 120mm



FK-0260

i Lockset hanging profile



FK-0270

i Lockset cube stabilizer



FK-0280

i Lockset Carre (1 pcs
NF-04810)



FK-0430

i Flexible lockset (2pcs)



FK-0675

i Lockset Carre 160



FK-1200

i Lockset 120-160

EXTENSION SETS



FK-0500

i Extensionset Heavy
20cm



FK-0510

i Extensionset
Eco/Simple



FK-0520

i Extensionset 100



FK-0522

i Extension set alu
15cm for D100



FK-0530

i Extensionset 200 - 30cm



FK-0532

i Extension set
aluminium Keeper



FK-0534

i Extension set
Double 120/160



FK-0540

i Extension set
Carre 160



FK-0605

i Cord43mm connector



FK-0606

i Cord43mm hinged
connector



FK-0607

i Cord43mm 140mm
connector



FK-0608

i Cord43mm 140mm
R2000 connector



FK-0715

i Cube 65mm extension
connector



FK-3050

i Connectorset 1-way
Quatro



FK-3054

i Extensionset 1-way
Quatro

BASEPLATES



FK-0100

- i Baseplate *SIMPLE*
- ⚙ Regular
- 🔩 Silver
- ✚ 380 x 50 x 10mm
- ⚖ 405g



FK-0105

- i Baseplate *SLIM*
- ⚙ Regular
- 🔩 Silver
- ✚ 380 x 75 x 3mm
- ⚖ 675g



FK-2105

- i Baseplate *SLIM*
- ⚙ Regular
- 🔩 Black
- ✚ 380 x 75 x 3mm
- ⚖ 675g



FK-5605

- i Baseplate *SLIM*
- ⚙ Regular
- 🔩 White
- ✚ 380 x 75 x 3mm
- ⚖ 675g



FK-0107

- i Baseplate *SLIM*
REFIND
- ⚙ Regular
- 🔩 Silver
- ✚ 380 x 75 x 8mm
- ⚖ 630g



FK-0110

- i Baseplate *HEAVY*
- ⚙ Regular
- 🔩 Silver
- ✚ 450 x 150 x 3mm
- ⚖ 1085g



FK-5610

- i Baseplate *HEAVY*
- ⚙ Regular
- 🔩 White
- ✚ 450 x 150 x 3mm
- ⚖ 1085g



FK-0112

- i Baseplate *HEAVY*
- ⚙ Regular
- 🔩 Silver
- ✚ 450 x 150 x 8mm
- ⚖ 1085g



FK-0120

- i Baseplate *SIDE*
- ⚙ Side
- 🔩 Silver
- ✚ 450 x 150 x 3mm
- ⚖ 1880g



FK-2120

- i Baseplate *SIDE*
- ⚙ Side
- 🔩 Black
- ✚ 450 x 150 x 3mm
- ⚖ 1880g



FK-5620

- i Baseplate *SIDE*
- ⚙ Side
- 🔩 White
- ✚ 450 x 150 x 3mm
- ⚖ 1880g



FK-0130

- i Baseplate SIDE Heavy
- ✿ Side
- 🌀 Silver
- ✚ 600 x 200 x 3mm
- ⚖ 3075g



FK-2130

- i Baseplate SIDE Heavy
- ✿ Side
- 🌀 Black
- ✚ 600 x 200 x 3mm
- ⚖ 3075g



FK-5630

- i Baseplate SIDE Heavy
- ✿ Side
- 🌀 White
- ✚ 600 x 200 x 3mm
- ⚖ 3075g



FK-0140

- i Baseplate D200
- ✿ Regular
- 🌀 Silver
- ✚ 600 x 200 x 3mm
- ⚖ 2820g



FK-2140

- i Baseplate D200
- ✿ Regular
- 🌀 Black
- ✚ 600 x 200 x 3mm
- ⚖ 2820g



FK-5640

- i Baseplate D200
- ✿ Regular
- 🌀 White
- ✚ 600 x 200 x 3mm
- ⚖ 2820g



FK-0170

- i Baseplate DELTA
- ✿ Unique
- 🌀 Silver
- ✚ 200 x 490 x 3mm
- ⚖ 400g



FK-2170

- i Baseplate DELTA
- ✿ Unique
- 🌀 Black
- ✚ 200 x 490 x 3mm
- ⚖ 400g



FK-5670

- i Baseplate DELTA
- ✿ Unique
- 🌀 White
- ✚ 200 x 490 x 3mm
- ⚖ 400g



FK-0174

- i Baseplate SIDE Heavy XL
- ✿ Side
- 🌀 Silver
- ✚ 800 x 200 x 5mm
- ⚖ 1880g



FK-0176

- i Baseplate HEAVY XL
- ✿ Regular
- 🌀 Silver
- ✚ 800 x 200 x 5mm
- ⚖ 6400g



FK-0180

- i Baseplate wheel
- ✿ Unique
- 🌀 Silver
- ✚ 450 x 150 x 3mm
- ⚖ 1085g

WALL MOUNTS



FK-0400

- i Wallmount SIMPLE
(bag/2 pcs)
- ✚ 30 x 30 x 15mm



FK-0410

- i Wallmount HEAVY
(bag/2 pcs)
- ✚ 40 x 40 x 20mm



FK-0414

- i Wallmount 120mm
(bag 2 pcs)
- ✚ 40 x 40 x 25mm



FK-0440

- i Wallplate Alu for
Double10 (Z-plate)
- ✚ 200 x 70 x 50mm



FK-0442

- i Wallplate Iron for
Double44 (Z-plate)
- ✚ 40 x 20 x 14mm



FK-8020

- i Cleathanger 20cm
- ↔ 200mm



FK-8050

- i Cleathanger 50cm
- ↔ 500mm



FK-8120

- i Cleathanger 120cm
- ↔ 1200mm

CEILING MOUNTS



FK-0360

- i Ceiling Mount



FK-0420

- i Ceiling Mount Slim 25



FK-0422

i Adjustable Ceiling Mount Slim 25 3mtr.



FK-0425

i Ceiling Mount Heavy



FK-0427

i Adjustable Ceiling Mount Heavy 27 3mtr.



FK-0609

i Cord 43 hanger

TUV



FK-7900

i Suspension cable (2pcs)
↓ 4m length
■ TUV certification

CORNERS



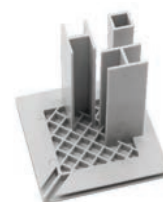
FK-0604

i Cord43mm endcap



FK-0710

i Cube 65mm corner connector



FK-0725

i Endcap Carre



FK-0726

i Endcap Carre



FK-0727

i Endcap Carre



FK-0730

i Round frame connector
set D44 (4pcs)



FK-0752

i 2-Way Corner Quatro



FK-0753

i 3-Way Corner Quatro



FK-0810

i Corner Protector 44

CONNECTORS



FK-0600

i Frame connector alu
80x30mm



FK-0610

i Stabilizer connector



FK-0615

i Frame connector
150 degrees



FK-0620

i Frame connector
135 degrees



FK-0630

i Frame connector
90 degrees



FK-0640

i Frame connector
180 degrees



FK-0650

i T-Frame connector



FK-0660

i Cross Frame connector



FK-0668

i Frame connector



FK-0670

i Triangle connector set

TENSIONSETS



FK-0446

i Tensionset H27
↔ 10mm
🔩 Silver



FK-2146

i Tensionset H27
↔ 10mm
🔩 Black



FK-5646

i Tensionset H27
↔ 10mm
🔩 White



FK-0444

i Tensionset D44
↔ 10mm
🔩 Silver



FK-2144

i Tensionset D44
↔ 10mm
🔩 Black



FK-5644

i Tensionset D44
↔ 10mm
🔩 White

ADDITIONAL



AF99-310

i LED-spot
🔩 Silver
💡 7000k White
💡 10W / 8V / 1100 lumen



AF99-312

- i LED-spot
- ✎ Black
- 7000k White
- 💡 10W / 8V / 1100 lumen



FK-0300

- i Alu Nut



FK-0306

- i Steel Nut



FK-0310

- i M6 Screw
- ↔ 12,55mm



FK-0320

- i M6 Screw
- ↔ 8,5mm



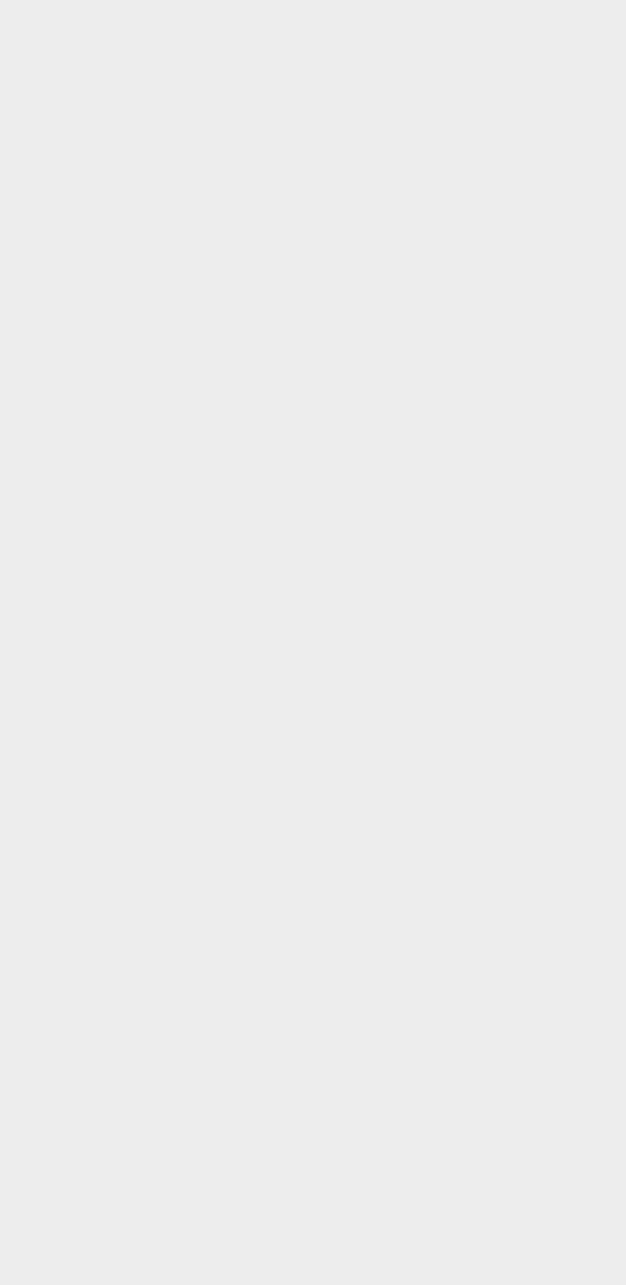
FK-9994

- i Aluminum Sample
- Box with 3 boxes



TR-100200

- i Trolley





LARGE STOCK



ADVANCED MACHINERY



PERSONAL ADVICE



ONLINE CALCULATOR

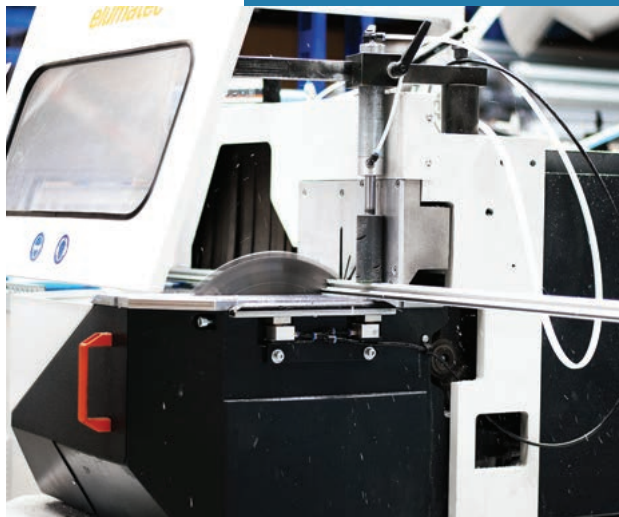


TRANSPORT WORLDWIDE

LARGE STOCK

EFKA has a warehouse (7000m²) and therefore they can meet every demand.





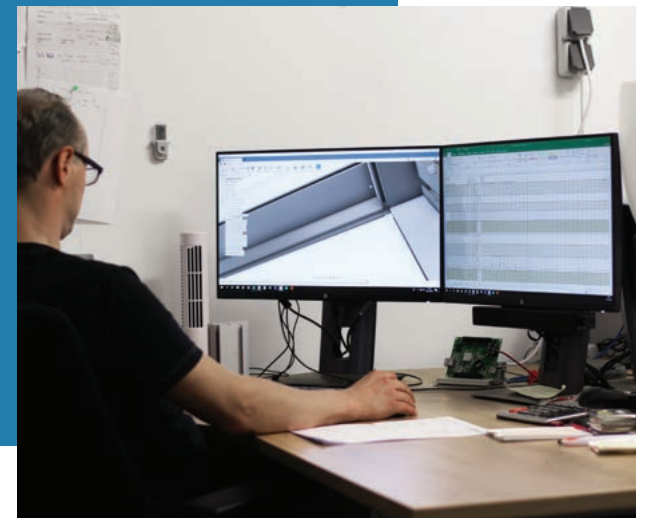
ADVANCED MACHINERY

With the newest machines, EFKA delivers quality.



PERSONAL ADVICE

EFKA has a team of engineers and project supervisors.





ONLINE CALCULATOR

Fast quoting with the online
calculator.



WORLDWIDE SHIPPING

With our partners, we can arrange transport anywhere in the world.





EFKA INTERNATIONAL BV

De Meerpaal 10
9206 AJ Drachten
The Netherlands

CONTACT

+31 512 - 47 27 21
sales@ledframes.nl
www.ledframes.nl/EN