



Why PrintFactory? Better Printing, Bigger Profits

PrintFactory is workflow software for wide format printers. It comes with a set of tools that work much harder and smarter than the average, standard RIP shipped with wide format printers today.



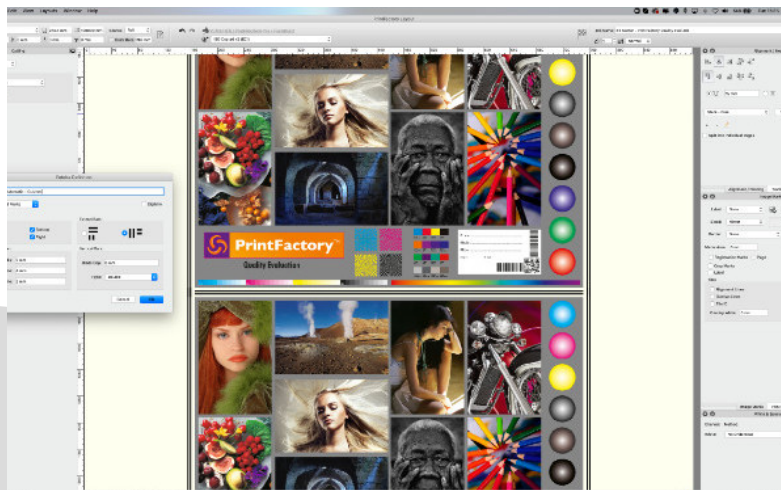
PrintFactory Editor

Designed specifically for large format print production, Editor combines all the tools that a large format printers' pre-press department needs to preflight, correct and edit customer's files. With a user interface similar to Adobe Illustrator product and an array of '1-Click' editing tools it takes no time at all to learn and implement.

Problem images and linework can be fixed before applying cut contours, spot colour mapping, advanced white or special ink channels or making colour management changes.

Thanks to tiling and finishing tools that quickly produce bleed, fold and eyelet placements; Editor reduces manual pre-press tasks dramatically - allowing users to get more work produced in less time.

PrintFactory Production customers receive unlimited concurrent licenses of the Editor application FREE !



PrintFactory Layout

This easy to use WYSIWYG graphic imposition tool, gives our users all the required functionality to output large format print ready artwork without having to use 3rd party software.

Layout submits nested jobs to the RIP remotely from the users own workstation so they don't have to get up and walk to the RIP. Simply pick any printer, or printer and cutter combination for your job and Layout does the rest; adjusting for selected media width, cutting paths, TrueShape or standard nesting.

Layout functions include:

- Scaling, Cropping, Rotating, Mirroring, Step & Repeat and Advanced Nesting.
- True Shape Nesting (Jigsaw type), page based Cutting Paths, all cut marks, registration marks and crop marks, Fold & Bleed, Eyelet Placement, White Ink Generation, Labels, Tiling Marks, Advanced Layout Templates and more.
- **PrintFactory Production** customers receive unlimited concurrent licenses of the Layout application FREE !





PrintFactory RIP

In today's large format printing environments, time is everything; we know that ourselves because we used to be printers. We have been developing our PDF RIP engine for over 25 years, and we designed it expressly for large format digital printing.

Not only is The **PrintFactory RIP** significantly faster than our competition, producing up to 4 simultaneous jobs per printer - but it also connects to over 2300 devices.

Our users can install as many RIP applications as they want on Mac, Windows or Linux systems without incurring additional costs.

Whether you are a large, wide, or 'super-wide' format printer there is no production environment that PrintFactory RIP cannot handle.

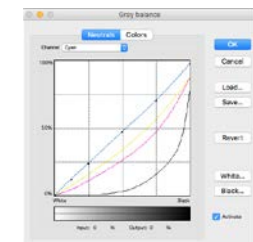
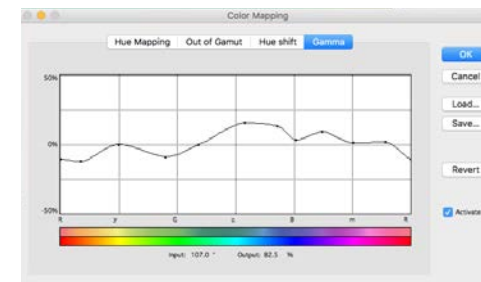
VISU™ Device Link Colour Profiling

Included with **PrintFactory Calibrator**, this industry proven colour engine is unparalleled in its accuracy and provides the highest level 'proofing grade' colour management. PrintFactory's VISU™ profiles are made the 'tightest Delta-e' tolerances available in large format printing today.

Perfect grey and neutral colours, plus the widest and cleanest Pantone/Spot colour rendition ensures your customers will always be happy, and your colour related wastage will be reduced to 'near-zero'.

The built-in printer recalibration allows our users to make printers of the same type visually match each other and also re-print files printed days, weeks or even months apart.....with no visual differences.

With VISU™ anyone can have high quality colour, without the cost.





Ink Savings



Courtesy of VISU™ all of our profiles include our EcoSave™ ink saving algorithms built-in and for free. EcoSave™ profiles save on average around 20% of any customer's digital ink bill; making this alone a cost neutral or money saving feature that will pay for the [PrintFactory](#) workflow alone.

Profiles that reduce ink consumption, not only reduce how much ink you have to buy, but they also have other advantages. Less ink means less substrate compatibility issues, less printhead wear, printer downtime and maintenance costs.

And that's without the time and wastage savings that our other modules give you, print output that is colour correct first time, and the reduction Adobe CC licenses you are going to have to pay for.



Automation

Whether you are a small, medium or large print business, nobody wants to keep doing the same thing over and over again. Wherever possible repetitive tasks should be handled automatically - even if just to alleviate boredom.

[PrintFactory Production](#) ships with HotFolder tools to automatically take care of tasks such as white generation, tiling, scaling, bleeds, folds and grommet placement - so regular work can be easily produced via drag-and-drop workflows.

[PrintFactory Connect](#), and [PrintFactory Automation](#) offer workflow automation via XML or API connectivity. In these instances the PrintFactory workflow is connected directly to front end Web2Print, MIS or E-Commerce systems for seamless integration and the ultimate workflow productivity.



Cloud Engine

Our connected applications work together seamlessly across your Local Area Network and also across the [PrintFactory Cloud](#).

The [PrintFactory Cloud](#) automatically backs up the installation of each RIP/Workstation including all Profiles and Custom Files, Spot Tables, Templates etc to make sure you never lose a production asset again..

There is also a production live link showing all files being processed and printed which includes all the metadata relating to each job - preview image, RIP and print time, cost per copy for ink and media and overall consumption.

The printer dashboard shows the status of all devices on your network, usage data and ink levels; you can even re-print files using this Web Browser tool from anywhere.

For customers using [PrintFactory Connect and Automation](#), the data collected in the PrintFactory Cloud can be collated and used for job tracking and costing in MIS/Web2Print and E-Commerce systems.



Connected Licensing

[PrintFactory](#) is 'soft-licensed' via our online Cloud servers, allowing instant updates of printer drivers, and deployment of our desktop applications. Designed to run in Mac, Windows and Linux environments - all of the applications are truly hardware independent and able to run across multi platform environments.

[PrintFactory](#) can be bought outright with a single purchase, or via regular payments with one of our Software as a Service (SaaS) plans - so you decide what suits your business model best.