

WWW.DISPLAY.3ACOMPOSITES.COM



YOUR VISION.  
OUR BRANDS.  
ENDLESS POSSIBILITIES.

PROMOTION  
SIGNAGE  
POS/POP  
PRODUCT PRESENTATION  
ADVERTISING MESSAGE  
PHOTO MOUNTING  
DIRECT DIGITAL PRINTING  
SCREEN PRINTING  
EVENT MARKETING  
BOOTH CONSTRUCTION  
SHOP DESIGN  
SHOP FRONTS  
INTERIOR DESIGN  
FURNITURE CONSTRUCTION  
CORPORATE IDENTITY

# HIGH QUALITY SHEETS FOR THE APPLICATION AREAS

# DESIGN PROMOTION PRINT

## TABLE OF CONTENTS

4 – 5	3A COMPOSITES DISPLAY EUROPE
6 – 13	ALUMINIUM COMPOSITE SHEETS DIBOND®   HYLITE®   KAPA®tech
14 – 23	ACRYLIC SHEETS (PMMA) PERSPEX®   CRYLUX®   CRYLON®   AKRYLON®
24 – 29	PET-SHEETS LUMEX®   HIPEX®
30 – 35	PVC-SHEETS FOREX®   FOAMALITE®
36 – 45	STYRENICS SMART-X®   POLYCASA® PS POLYCASA® HIPS   POLYCASA® SAN
46 – 49	POLYCARBONATE SHEETS IMPEX®
50 – 59	PAPER AND LIGHTWEIGHT FOAMBOARDS DISPA®   KAPA®   FOAM-X®   GATORFOAM®

## 3A COMPOSITES DISPLAY EUROPE

3A Composites Display Europe, an international division of the 3A Composites Group and part of Schweiter Technologies AG, is active internationally. We are the leading manufacturer of sheet materials for the field of visual communication, along with the Polycasa Group and Perspex International Ltd.

On the following pages, we would like to present our wide and diversified product portfolio. This variety means that we can offer our customers a unique and perfectly coordinated range of products– and everything is from a single source.

The main areas of application for our products include: digital and screen printing, exhibition booth construction and shop fitting, interior and shop design, photo-mounting as well as signage, POS/POP displays and furniture construction.

Thanks to a worldwide network of producers and dealers, our branded products are available at short notice in more than 80 countries. This network is based on our partnership with leading distributors in the paper, plastics and metal sectors, who offer not only competent advice, but also services catering to the individual requirements of our customers.

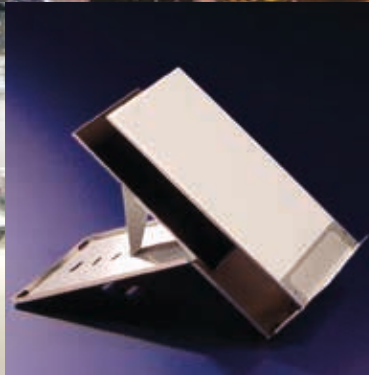
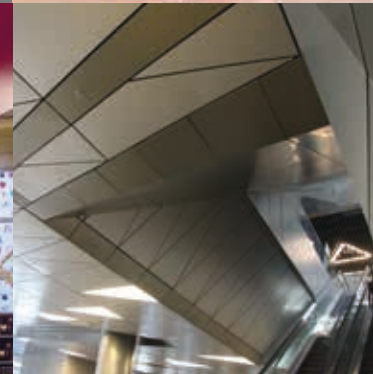
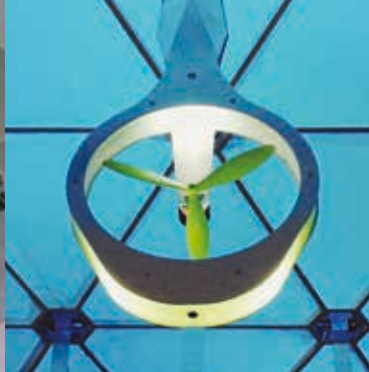
We attach particular importance to sustainable manufacturing processes and environmentally friendly materials. Our goal is to ensure the prompt supply of innovative, top-quality products which are tailored to our customers' needs.

YOUR VISION. OUR BRANDS. ENDLESS POSSIBILITIES.

In this brochure, we would like to provide you with an initial, general overview of our extensive product range. Please note that in some cases, versions of featured products may not be available in all specified colours and thicknesses and that certain processing options may not apply to all product versions. Please refer to the appropriate individual product brochures and delivery programmes for detailed information and product availability. We are, of course, happy to provide you with more comprehensive processing instructions for each product. Please contact your customer service representative or use the contact form on our website: [www.display.3AComposites.com](http://www.display.3AComposites.com). We are happy to offer advice!







Design: Daniel Michel

Design: Andreas Hegert

## MATERIAL

Aluminium composite

## PRODUCT VERSIONS

DIBOND® (Standard)  
DIBOND®digital  
DIBOND® FR  
BUTLERFINISH®  
DIBOND®structure  
DIBOND®mirror  
DIBOND®eloxal  
DIBOND®decor  
DIBOND®design

## COLOURS

Wide range of standard colours, decorative and textured surfaces as well as special colours (on request)

## THICKNESSES

2 to 6 mm

## APPLICATIONS

Displays (POS/POP)  
Signage | Lettering  
Corporate Identity  
Shop design  
Shop window decoration  
Furniture | Interior design  
Partition wall | Cladding  
Exhibition design  
Creative work

## PROCESSING

Digital printing | Screen printing  
Laminating  
Lacquering  
Contour milling  
Water jet cutting  
Shearing | Sawing | Die cutting  
Glueing  
Drilling | Riveting | Screwing  
Welding  
Folding (V-groove) | 3D  
Cold bending | Cold folding  
Engraving (laser / graver)

Some product versions may have restricted processing options. Our experienced team of engineers at the Technical Department is available to offer help and answer any questions.

## PRODUCT

DIBOND® is the original aluminium composite sheet, comprising two 0.3 mm thick aluminium cover layers and a polyethylene or mineral core. It is lightweight – extremely rigid and strong, making it ideal for both indoor and outdoor applications.

DIBOND® is used predominately in the areas of signage, product and furniture design, shopfitting, interior design, shop design as well as trade fair and exhibition design.

## QUALITY MEETS DESIGN.

# DIBOND®

DIBOND® is the perfect material for producing creative ideas due to its wide range of high-quality surfaces, easy processing and durability.

All products provide the ideal ambience for successful customer communication and their unique, consistent design conveys a tangible brand image to the customer.





## MATERIAL

Aluminium composite  
with polypropylene core

## PRODUCT VERSIONS

HYLITE® with compact core  
HYLITE® with foamed core

## COLOURS

Aluminium | White |  
Other colours on request

## THICKNESSES

Compact core: 1.2 or 2 mm  
Foamed core: 3 or 4 mm

## APPLICATIONS

Signage | Lettering  
Furniture | Interior design  
Lighting  
Office supplies  
Creative work

## PROCESSING

Digital printing  
Contour milling  
Water jet cutting  
Shearing | Sawing | Die cutting  
Glueing  
Drilling | Riveting | Screwing  
Folding (V-groove) | 3D  
Cold bending | Cold folding  
Hinge joint routing (bending cycles)  
– only compact core  
Embossing

Some product versions may have restricted processing options.  
Our experienced team of engineers at the Technical Department  
is available to offer help and answer any questions.

## PRODUCT

HYLITE® is an aluminium composite panel with a polypropylene core and aluminium cover layers. Due to two different types of core, the product range offers a wide variety of options for many different applications.

HYLITE® is the world's thinnest composite panel and its compact core material, in 1.2 or 2 mm thicknesses, provides a special hinge function, i.e. HYLITE® withstands repeated bending without damage. The hinge function is achieved by milling grooves into the outer aluminium cover layers in an identical position on both sides.

HIGHLY VERSATILE – WITH A  
COMPACT OR FOAMED CORE.

# HYLITE®

For the 3 and 4 mm thicknesses, the core material is foamed in a specially developed production process. This results in an ultra-light aluminium composite panel which is 80% lighter than conventional steel sheets or 30% lighter than aluminium sheets with the same flexural strength. Another plus point is the sheet's high temperature resistance and digital printability. This is ensured by the use of high-quality aluminium strips in the production process.



## MATERIAL

Aluminium composite  
with polyurethane foam core

## COLOURS

White |  
Other colours on request

## THICKNESSES

5, 10 and 15 mm  
Aluminium cover layers 0.2 mm  
5 and 10 mm  
Aluminium cover layers 0.3 mm available on request

## APPLICATIONS

Displays (POS/POP)  
Signage | Lettering  
Shop design  
Shop window decoration  
Furniture | Interior design  
Partition wall | Cladding  
Exhibition design

## PROCESSING

Digital printing | Screen printing  
Laminating | Mounting  
Cutting | Plotting  
Contour milling | Sawing  
Glueing  
Drilling | Screwing  
Folding (V-groove) | 3D

Some product versions may have restricted processing options.  
Our experienced team of engineers at the Technical Department  
is available to offer help and answer any questions.

# KAPA<sup>®</sup>tech

## PRODUCT

KAPA<sup>®</sup>tech, an innovative lightweight sheet featuring a unique composition of a polyurethane foam core and aluminium cover layers, combines lightweight with rigidity.

Thanks to the lacquered aluminium cover layers and a temperature and moisture-resistant core, KAPA<sup>®</sup>tech is the first KAPA<sup>®</sup> sheet for both indoor and outdoor applications.

KAPA<sup>®</sup>tech is not only suitable for use outdoors, one of the product's main advantages is its fire classification: it is flame retardant and qualifies as "difficult-to-ignite".

INNOVATIVE WITH UNIQUE PROPERTIES:  
LIGHTWEIGHT – STRONG – FIRE RATED.







Photographer: Zone Creations



Photographer: Saxum Design



Designer / Fabricator: Studio David Thulstrup ApS  
Photographer: crinaleoerme



Fabricator: Impuls Fabrications Ltd



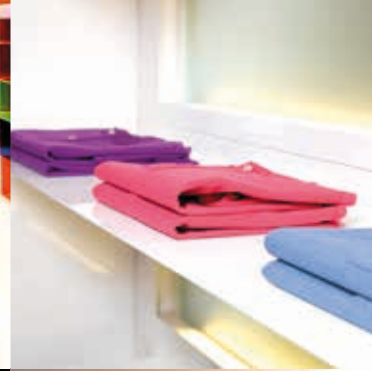
ACRYLIC GLASS (PMMA)



Photographer: Kewlox



Photographer: ASG



Photographer: Rousseau Designs



Client: JB Hi-Fi | Designer / Fabricator: Adherettes



Design: ShowMachine Systems  
Fabricator: Talbot Designs





## MATERIAL

Acrylic glass

## PRODUCT VERSIONS

PERSPEX® (Standard)  
PERSPEX® Textures  
PERSPEX® Effects  
PERSPEX® Light  
PERSPEX® Illumination  
PERSPEX® Optimised Performance  
PERSPEX® CC  
PERSPEX® XT

## COLOURS

Colourless | Opal/White | Translucent, transparent and matt colours as well as a wide variety of textures and effects | Other colours on request

## THICKNESSES

2 to 50 mm

## APPLICATIONS

Displays (POS/POP) | Signage | Lettering  
Corporate Identity | Shop design  
Shop window decoration  
Furniture | Interior design  
Partition wall | Cladding  
Exhibition design | Lighting | Glazing  
Hospital and laboratory equipment  
Suitable for food applications  
Creative work

## PROCESSING

Digital printing | Screen printing  
Cutting | Plotting  
Contour milling  
Laser cutting | Water jet cutting  
Sawing | Glueing  
Drilling | Screwing  
Hot bending | Hot folding  
Thermoforming  
Cold bending | Cold folding  
Engraving (laser/graver)  
Tempering  
Polishing

Some product versions may have restricted processing options.  
Our experienced team of engineers at the Technical Department  
is available to offer help and answer any questions.

## PRODUCT

PERSPEX® acrylic glass is recognised as a premium product, one of the highest quality acrylic materials in the world. Continuous innovation and development over the past years have resulted in the creation of a wide spectrum of products.

These innovative materials are widely used in various areas of application such as architecture, visual communication, shopfitting, furniture construction, and lighting. The versatility of PERSPEX® acrylic glass offers international designers a valuable source of inspiration.



PERSPEX® acrylic glass is available in colourless as well as a variety of different colours, tints, textures and effects.

Experts at the in-house laboratory can match almost any colour for unique design concepts. They can also combine colours or create new bespoke hues tailored to customer requirements.

For transforming creative ideas into reality, PERSPEX® is the perfect choice.

## CAST & EXTRUDED ACRYLIC GLASS WITH LIMITLESS COLOUR AND TEXTURE OPTIONS.



## MATERIAL

Acrylic glass

## PRODUCT VERSIONS

CRYLUX® (Standard)

CRYLUX® & COLOURS:

CRYLUX® Argenta | CRYLUX® Neon

CRYLUX® Design

CRYLUX® & LIGHT:

CRYLUX® Lumina | CRYLUX® Vision

CRYLUX® Optima | CRYLUX® Fluoege

CRYLUX® Night+Day

CRYLUX® & PROTECT:

CRYLUX® Beauté | CRYLUX® Anti-Bacteria

CRYLUX® UVP | CRYLUX® UVT

## COLOURS

Extensive range of clear-transparent, coloured, opaque, matt, coloured transparent or translucent versions | Other colours on request

## THICKNESSES

Sheets: 2 to 35 mm | Blocks: 40 to 60 mm

## APPLICATIONS

Displays (POS/POP)

Signage | Lettering

Corporate Identity | Shop design

Shop window decoration

Furniture | Interior design

Partition wall | Cladding

Exhibition design

Lighting | Glazing

Audiovisual projection screens

Hospital and laboratory equipment

Suitable for food applications

Creative work

## PROCESSING

Digital printing | Screen printing

Cutting | Plotting | Contour milling

Laser cutting | Water jet cutting

Sawing | Glueing | Drilling | Welding

Hot bending | Hot folding

Thermoforming

Cold bending | Cold folding

Engraving (laser/graver)

Tempering | Polishing

Some product versions may have restricted processing options. Our experienced team of engineers at the Technical Department is available to offer help and answer any questions.



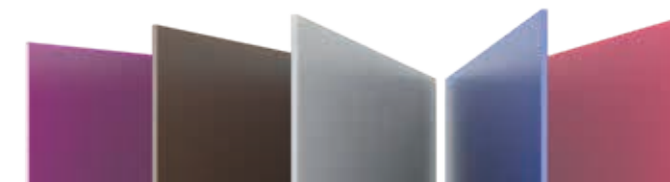
## PRODUCT

When looks really matter, acrylic glass (PMMA) is the perfect choice due to its high transparency, durability and UV stability.

CRYLUX® is an acrylic sheet material which comes into its own when visual impact is key. It is made of cast polymethyl methacrylate (PMMA) and is perfect for a range of purposes: for corporate signage, shopfitting, the building industry or individual pieces of furniture. The product's perfect transparency is ideal for display applications and visual communication as it comes not only in clear transparent but also in lively, vibrant colour shades. Thanks to easy processing options using most standard processing techniques, it offers great scope for appealing design aesthetics.

## CAST ACRYLIC IN LIVELY, VIBRANT COLOURS.

The colour spectrum includes special gloss grades (CRYLUX® Argenta), luminous, fluorescent colours (CRYLUX® Neon) and anti-reflective matt surfaces (CRYLUX® Design). In addition, there are several product versions tailored to suit the specific requirements of individual applications: CRYLUX® UVP (extra ultraviolet protection) provides especially good protection against UV radiation, CRYLUX® UVT is transparent for UV-A rays (ultraviolet transmitting) as well as partially for UV-B rays, CRYLUX® Beauté with enhanced chemical resistance, CRYLUX® Anti-Bacteria with antimicrobial and fungicidal protection and CRYLUX® Lumina, Optima and Vision, which are specially designed for use with LED lighting or as a projection screen.



## MATERIAL

Acrylic glass

## PRODUCT VERSIONS

CRYLON® (Standard)

CRYLON® HI

CRYLON® UVT

CRYLON® Surface structures

CRYLON® Soft Tone

CRYLON® Sound Barrier Wall (SBW)

CRYLON® Sound Barrier Wall Soft Tone

## COLOURS

Clear | Opal | White | A range of standard colours |

Other colours on request

## THICKNESSES

1.5 to 25 mm

## APPLICATIONS

Displays (POS/POP)

Signage | Lettering

Corporate Identity | Shop design

Shop window decoration

Furniture

Partition wall | Cladding

Lighting | Glazing

Suitable for food applications

Sound proofing walls

## PROCESSING

Digital printing | Screen printing

Laminating | Mounting

Contour milling

Laser cutting | Water jet cutting

Thread cutting

Sawing | Glueing | Drilling | Screwing

Welding

Hot bending | Hot folding

Thermoforming

Engraving (laser/graver)

Tempering

Polishing

Some product versions may have restricted processing options. Our experienced team of engineers at the Technical Department is available to offer help and answer any questions.



## PRODUCT

CRYLON® comprises an extensive range of large-format, extruded acrylic glass sheets featuring outstanding clarity and first-rate optical characteristics, excellent colour rendering and varying degrees of transparency.

The premium quality surfaces have a high level of resistance to weathering and aging, and provide solutions for a variety of indoor and outdoor applications.

For special applications, the product range offers the particularly impact-resistant version CRYLON® HI (High Impact).

## EXTRUDED ACRYLIC IN BRILLIANT CLARITY.

CRYLON® UVT is ideal for solariums and sunbeds. The sheets have high transmittance in the UV-A/UV-B spectral range and very good resistance to degradation following exposure to these rays.

CRYLON® Soft Tone is characterised by double-sided matt surfaces.

CRYLON® Sound Barrier Wall (SBW) is a sound-absorbing material for sound proofing against traffic noise. CRYLON® Sound Barrier Wall Soft Tone has an impressive silky matt surface which prevents light reflections and enhances light diffusion.





## MATERIAL

Acrylic glass

## PRODUCT VERSIONS

AKRYLON® (Standard)

AKRYLON® UVT

## COLOURS

Clear | Opal/White | A range of standard colours available in transparent, translucent and opaque versions | Other colours on request

## THICKNESSES

1.8 to 15 mm

## APPLICATIONS

Displays (POS/POP)

Signage | Lettering

Corporate Identity | Shop design

Shop window decoration

Furniture

Partition wall | Cladding

Lighting | Glazing

Suitable for food applications

## PROCESSING

Digital printing | Screen printing

Laminating | Mounting

Contour milling

Laser cutting | Water jet cutting

Thread cutting

Sawing | Glueing | Drilling | Screwing

Welding

Hot bending | Hot folding

Thermoforming

Engraving (laser/graver)

Tempering | Polishing

Some product versions may have restricted processing options. Our experienced team of engineers at the Technical Department is available to offer help and answer any questions.



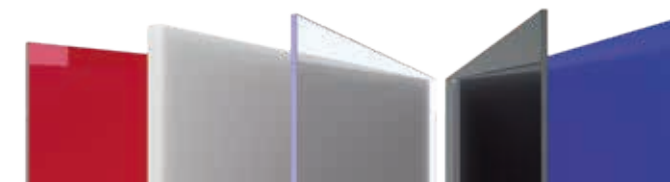
## PRODUCT

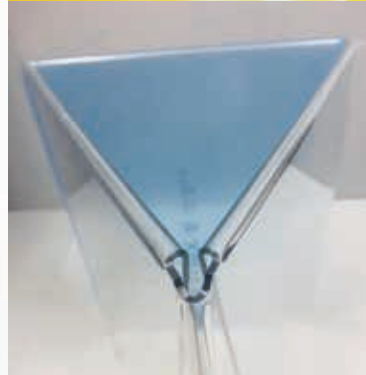
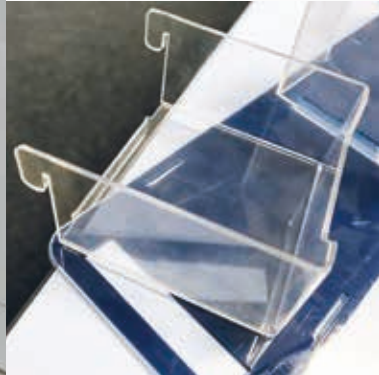
AKRYLON® stands for large-format, extruded poly-methyl methacrylate (PMMA) sheets in brilliant clarity, featuring excellent optical properties and in different levels of transparency. AKRYLON® is easy to form and ideally suited for indoor and outdoor applications.

AKRYLON® provides sparkling clarity and formability, making it an extremely popular material for shop design, window display and signage of all kinds.

A wide spectrum of colours is available in opaque, matt, transparent and translucent versions.

SPARKLING CLARITY  
AND EASY FORMABILITY.







## MATERIAL

PET

## PRODUCT VERSIONS

LUMEX® A

– for flat and cold bending applications

LUMEX® G

– ideal for vacuum and thermoforming

## COLOURS

Clear transparent (with or without anti-reflective) |

Opal 30% | Other colours on request

## THICKNESSES

LUMEX® A: 0.5 to 6 mm

LUMEX® G: 0.5 to 10 mm

## APPLICATIONS

Displays (POS/POP) | Signage | Lettering

Shop design | Shop window decoration

Furniture | Interior design

Partition wall | Cladding | Exhibition design

Model making | Presentations

Short-term promotional campaigns

Lighting

Suitable for food applications

Office supplies | Creative work

## PROCESSING

Digital printing | Screen printing

Cutting | Plotting | Contour milling

Laser cutting | Thread cutting

Sawing | Die cutting | Glueing | Drilling | Screwing

Welding

Folding | 3D

Hot bending | Hot folding

Thermoforming

Cold bending | Cold folding

Hinge joint routing (bending cycles)

Engraving (laser/graver)

Tempering

Some product versions may have restricted processing options.  
Our experienced team of engineers at the Technical Department  
is available to offer help and answer any questions.

## PRODUCT

LUMEX® stands for flawlessly extruded transparent and translucent A-PET and PET-G thermoplastic polyester sheets. Both products ensure excellent printing results with UV-resistant inks, have a high level of impact resistance, are easy and fast to process and the UV protection version offers good resistance to weathering.

In addition, LUMEX® is classed as “difficult-to-ignite” and suitable for food applications.

# LUMEX®

The LUMEX® product range is the ideal choice for forming. LUMEX® A (A-PET) is especially suitable for cold-bending applications, LUMEX® G (PET-G) for vacuum and thermoforming.

LUMEX® sheets are recyclable in their own category of plastic waste.

## A CLEAR CHOICE.





## MATERIAL

PET

## PRODUCT VERSIONS

HIPEX® A – for cold bending applications

HIPEX® G – for complex thermoforming

## COLOURS

Clear transparent (with or without anti-reflective) |

Opal 30% | Other colours on request

## THICKNESSES

HIPEX® A: 0.5 to 6 mm

HIPEX® G: 0.5 to 20 mm

## APPLICATIONS

Displays (POS/POP) | Signage | Lettering

Shop design | Shop window decoration

Furniture | Interior design

Partition wall | Cladding | Exhibition design

Model making | Presentations

Short-term promotional campaigns

Lighting

Suitable for food applications

Office supplies | Creative work

## PROCESSING

Digital printing | Screen printing

Cutting | Plotting | Contour milling

Laser cutting | Thread cutting

Sawing | Die cutting | Glueing | Drilling | Screwing

Welding

Folding | 3D

Hot bending | Hot folding

Thermoforming

Cold bending | Cold folding

Hinge joint routing (bending cycles)

Engraving (laser/graver)

Tempering

Some product versions may have restricted processing options.  
Our experienced team of engineers at the Technical Department  
is available to offer help and answer any questions.



## PRODUCT

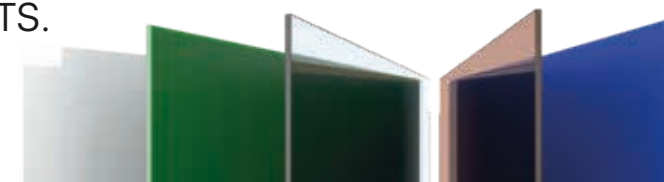
The HIPEX® product range includes extruded A-PET and PET-G thermoplastic polyester sheets. These sheets are characterized by their impressive impact strength, outstanding transparency, excellent printability with UV-resistant inks, plus their fast and easy processing options.

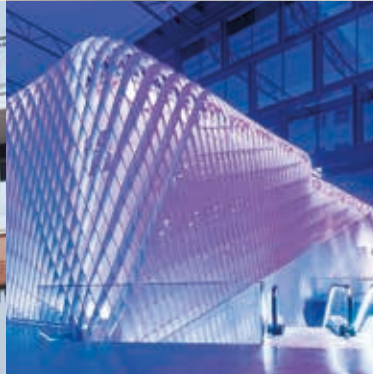
In addition, HIPEX® sheets are fire rated “difficult-to-ignite” meaning that they are the best possible choice for a wide range of different indoor and outdoor applications. For outdoor use, we recommend the version with UV protection.

The HIPEX® product range is ideal when it comes to forming. HIPEX® A is especially suited for cold-bending applications, HIPEX® G for complex thermoforming.

HIPEX® sheets are recyclable within their own category of plastic waste.

## FLAWLESSLY EXTRUDED A-PET AND PET-G THERMOPLASTIC POLYESTER SHEETS.







## MATERIAL

PVC

## PRODUCT VERSIONS

FOREX®classic

FOREX®print

FOREX®color

## COLOURS

White | Light Yellow | Dark Yellow | Orange | Red |  
Light Blue | Dark Blue | Green | Grey | Black

## THICKNESSES

1 to 19 mm

## APPLICATIONS

Displays (POS/POP) | Signage | Lettering  
Corporate Identity | Shop design  
Shop window decoration  
Furniture | Interior design  
Partition wall | Cladding  
Exhibition design  
Model making | Presentations  
Short-term promotional campaigns  
Hospital and laboratory equipment  
Creative work

## PROCESSING

Digital printing | Screen printing  
Spray Painting | Lacquering  
Cutting | Plotting  
Contour milling | Water jet cutting  
Shearing | Sawing | Die cutting  
Glueing | Drilling | Screwing | Welding  
Hot bending | Hot folding  
Thermoforming  
Cold bending | Cold folding  
Embossing

Some product versions may have restricted processing options.  
Our experienced team of engineers at the Technical Department  
is available to offer help and answer any questions.

## PRODUCT

FOREX® stands for fine, white rigid foamboards made of PVC. The FOREX® product family offers a wide choice of lightweight, high quality sheet materials with excellent surface properties. This makes FOREX® “the material of choice” for numerous indoor and outdoor applications.

FOREX®classic is the premium sheet in the FOREX® product family with the best mechanical properties and highest surface quality.

## THE CLASSIC DISPLAY SHEET.

# FOREX®

FOREX®print is specially designed for the printing industry. It is a lightweight sheet with brilliant white, smooth surfaces which provide a perfect substrate for printing, particularly digital printing.

FOREX®color completes the FOREX® product family with nine vibrant colour options. The rigid foam sheet is uniformly coloured throughout so it offers the highest colour consistency and ensures there is no colour disparity when viewed from different angles.



## MATERIAL

PVC

## PRODUCT VERSIONS

FOAMALITE® premium

FOAMALITE® x-press

FOAMALITE® color

FOAMALITE® plus

## COLOURS

White | Light Yellow | Dark Yellow | Orange | Red |  
Light Blue | Dark Blue | Green | Grey | Black

## THICKNESSES

1 to 19 mm

## APPLICATIONS

Displays (POS/POP) | Signage | Lettering  
Corporate Identity | Shop design  
Shop window decoration  
Furniture | Interior design  
Partition wall | Cladding  
Exhibition design  
Model making | Presentations  
Short-term promotional campaigns  
Audiovisual projection screens  
Hospital and laboratory equipment  
Creative work

## PROCESSING

Digital printing | Screen printing  
Spray Painting | Lacquering  
Cutting | Plotting  
Contour milling | Water jet cutting  
Shearing | Sawing | Die cutting  
Glueing | Drilling | Screwing | Welding  
Hot bending | Hot folding  
Thermoforming  
Cold bending | Cold folding  
Embossing

Some product versions may have restricted processing options.  
Our experienced team of engineers at the Technical Department  
is available to offer help and answer any questions.

## PRODUCT

FOAMALITE® rigid PVC foamboards are a range of plastic boards for applications in the field of visual communications. Used as a print substrate or as a creative, coloured or co-extruded sheet, FOAMALITE® always delivers what it promises.

FOAMALITE® premium makes the perfect display board for exhibition booths, POS/POP displays or even signage as it is lightweight and also offers excellent dimensional stability.

RELIABLE CHOICE =  
EXCELLENT OUTCOME.

# FOAMALITE®

Thanks to its smooth, white, flat surface, FOAMALITE® x-press is the ideal choice for outstanding printing results.

FOAMALITE® color offers a choice of nine different colour tones all providing optimum colour consistency and uniform colour effects.

FOAMALITE® plus is a co-extruded rigid PVC foam sheet consisting of high-quality white cover layers and a black recycled core. The hard, smooth, bright white surface provides extra robustness and scratch resistance in comparison with standard PVC sheets.









## MATERIAL

Polystyrene lightweight foamboard

## COLOURS

White

## THICKNESSES

5, 10 and 19 mm

## APPLICATIONS

Displays (POS/POP)  
Signage | Lettering  
Shop design  
Shop window decoration  
Partition wall | Cladding

## PROCESSING

Digital printing | Screen printing  
Laminating | Mounting  
Spray Painting | Lacquering  
Cutting | Plotting  
Contour milling  
Laser cutting  
Sawing  
Glueing  
Drilling  
Folding | 3D

Some product versions may have restricted processing options.  
Our experienced team of engineers at the Technical Department  
is available to offer help and answer any questions.

## PRODUCT

SMART-X® is a distinctive lightweight foamboard for demanding visual communication applications.

This extremely lightweight, all-plastic board with weather and UV-resistant cover layers in impact-resistant solid polystyrene (HIPS) and a core of foamed polystyrene is completely insensitive to moisture. These properties mean that it is a lightweight material which can be used in outdoor applications for a period of up to two years without significant colour change.

**DISTINCTIVE AND UNIQUE FOR  
SOPHISTICATED ADVERTISING.**

# SMART-X®

SMART-X® is also an optimal substrate for direct digital printing due to its smooth surface structure and availability in large formats (up to 2 metres wide).

In addition, SMART-X® is a mono-material composite made from polystyrene and is therefore 100% recyclable.





## MATERIAL

PS

## COLOURS

Clear transparent | Clear transparent with anti-reflective on one side | Variety of translucent and opaque colours as well as different patterns available on request

## THICKNESSES

0.85 to 5 mm

## APPLICATIONS

Displays (POS/POP)  
Signage | Lettering  
Shop design | Shop window decoration  
Furniture | Interior design  
Partition wall | Cladding  
Model making | Presentations  
Short-term promotional campaigns  
Lighting | Glazing  
Suitable for food applications  
Office supplies | Creative work  
Shower cabins | Sanitary ware

## PROCESSING

Digital printing | Screen printing  
Lacquering  
Contour milling | Laser cutting  
Thread cutting  
Sawing | Glueing | Drilling | Screwing  
Folding | 3D  
Hot bending | Hot folding  
Thermoforming  
Engraving (laser/graver)

Some product versions may have restricted processing options. Our experienced team of engineers at the Technical Department is available to offer help and answer any questions.

42



## PRODUCT

POLYCASA® PS stands for extruded crystal polystyrene sheets which provide solutions for many indoor applications. Thanks to the extrusion process, alongside the clear transparent standard products (with or without anti-reflective), there are also a variety of colours and patterns, especially for the manufacturing of shower cabins, on offer.

POLYCASA® PS sheets are not only used for a number of different purposes in the field of visual communication, e.g. as signage for advertising campaigns, as POS/POP displays or as glazing for picture frames but also for sanitary ware.

VERSATILE, EFFECTIVE, ATTRACTIVE.



## MATERIAL

HIPS

## COLOURS

White | Black | In matt or glossy finish | Other colours and patterns (Pinseal, Grain, Smart & Leather) available on request

## THICKNESSES

0.5 to 10 mm

## APPLICATIONS

Displays (POS/POP)  
Signage | Lettering  
Partition wall | Cladding  
Suitable for food applications

## PROCESSING

Digital printing | Screen printing  
Lacquering  
Contour milling  
Laser cutting  
Thread cutting  
Sawing  
Glueing  
Drilling  
Screwing  
Folding | 3D  
Hot bending | Hot folding  
Thermoforming

Some product versions may have restricted processing options. Our experienced team of engineers at the Technical Department is available to offer help and answer any questions.



## PRODUCT

POLYCASA® HIPS is a rubber-modified polystyrene sheet which offers enhanced impact resistance and is easy to process. The product is available with either a matt finish on both sides or with a matt finish on one side and a glossy surface on the other.

The sheets' surface quality is outstanding and they offer an excellent printing substrate. In addition, they are suitable for thermoforming.

ENHANCED IMPACT RESISTANCE.  
EASY TO CUT AND FORM.



## MATERIAL

SAN

## COLOURS

Clear transparent | Translucent and opaque colours as well as various patterned surfaces available on request

## THICKNESSES

1.5 to 6 mm

## APPLICATIONS

Displays (POS/POP)  
Signage | Lettering  
Shop design  
Furniture | Interior design  
Partition wall | Cladding  
Exhibition design  
Suitable for food applications

## PROCESSING

Digital printing | Screen printing  
Lacquering  
Contour milling  
Laser cutting | Thread cutting  
Sawing | Glueing | Drilling | Screwing  
Folding | 3D  
Hot bending | Hot folding  
Thermoforming  
Cold bending | Cold folding  
Engraving (laser/graver)

Some product versions may have restricted processing options. Our experienced team of engineers at the Technical Department is available to offer help and answer any questions.

46



## PRODUCT

POLYCASA® SAN are extruded styrene-acrylonitrile copolymer (SAN) sheets. The SAN programme offers solutions for both indoor and outdoor applications. For outdoor use we recommend the version with UV protection.

Compared to conventional transparent materials, these sheets provide real benefits – weighing 10% less but with considerably enhanced rigidity, POLYCASA® SAN sheets can be up to one third thinner for similar applications. In addition, POLYCASA® SAN is exceptionally resistant against water and chemical absorption.

LIGHTER, BUT STIFFER.







## MATERIAL

PC

## PRODUCT VERSIONS

IMPEX® (Standard)  
IMPEX® UVP  
IMPEX® HC

## COLOURS

Clear transparent | Opal / White | Brown |  
Other opaque, translucent colours and patterned  
surfaces (Prismatic, Impala, Haircell) with or  
without UV protection available on request

## THICKNESSES

1 to 20 mm

## APPLICATIONS

Displays (POS/POP)  
Signage | Lettering  
Shop design  
Shop window decoration  
Furniture | Interior design  
Partition wall | Cladding  
Exhibition design | Model making | Presentations  
Lighting | Glazing  
Creative work

## PROCESSING

Digital printing | Screen printing  
Lacquering  
Cutting | Plotting  
Contour milling | Thread cutting  
Sawing | Die cutting | Glueing | Drilling | Screwing  
Folding | 3D  
Hot bending | Hot folding  
Thermoforming  
Cold bending | Cold folding  
Engraving (laser / graver)  
Tempering  
Polishing

Some product versions may have restricted processing options.  
Our experienced team of engineers at the Technical Department  
is available to offer help and answer any questions.



## PRODUCT

IMPEX® stands for a wide range of large format, extruded, virtually unbreakable polycarbonate sheets with excellent optical and mechanical properties. The product range comprises an array of different surfaces, versions and patterns. The high quality sheets are extremely impact resistant, which means they can provide comprehensive solutions for both indoor and outdoor use.

IMPEX® UVP with UV protection on both sides and excellent resistance to weathering is especially suitable for use outdoors.

IMPEX® HC with good impact resistance and enhanced surface abrasion resistance is suitable for flat applications both indoors and outdoors.

## EXTRUDED POLYCARBONATE SHEETS WITH EXCEPTIONAL CHARACTERISTICS.









## MATERIAL

Paper board

## COLOURS

White

## THICKNESSES

3.8 mm

## APPLICATIONS

Displays (POS/POP)

Signage | Lettering

Corporate Identity

Shop design

Shop window decoration

Exhibition design

Short-term promotional campaigns

Creative work

## PROCESSING

Digital printing | Screen printing

Laminating | Mounting

Cutting | Plotting

Die cutting

Glueing

Folding (creasing wheel) | 3D

Embossing

Some product versions may have restricted processing options.  
Our experienced team of engineers at the Technical Department  
is available to offer help and answer any questions.

## PRODUCT

DISPA®, a 100% FSC® certified paper board (FSC® C127595), is 100% recyclable. The unique structure of the embossed paper core in DISPA® boards makes them strong and rigid and the ideal sustainable material for short-term indoor promotions.

DISPA® delivers everything you would expect from a board designed for signage and display purposes – flat, smooth surfaces, excellent printability, rigidity and strength.

# DISPA®

In addition, DISPA® is easy to process – even in 3D! The use of a creasing wheel with a specific embossed geometry facilitates creative folding techniques. DISPA® can be folded into different angles and can create complex designs thanks to this double-line creasing.



## 100% PAPER – 100% RECYCLABLE.



## MATERIAL

Lightweight foamboard  
with polyurethane foam core

## PRODUCT VERSIONS

KAPA®line  
KAPA®plast  
KAPA®color  
KAPA®mount  
KAPA®fix  
KAPA®graph  
KAPA®tex  
KAPA®bright

## COLOURS

White | Grey | Grey/Black (bi-colour)

## THICKNESSES

3 to 20.5 mm

## APPLICATIONS

Displays (POS/POP)  
Signage | Lettering  
Corporate Identity  
Shop design  
Shop window decoration  
Exhibition design  
Model making | Presentations  
Short-term promotional campaigns  
Creative work

## PROCESSING

Digital printing | Screen printing  
Laminating | Mounting  
Painting | Spray Painting  
Cutting | Plotting  
Water jet cutting  
Sawing  
Die cutting  
Glueing  
Screwing  
Folding (V-groove) | 3D

Some product versions may have restricted processing options.  
Our experienced team of engineers at the Technical Department  
is available to offer help and answer any questions.

## PRODUCT

KAPA® is a high-quality lightweight foamboard with a polyurethane foam core and individual paper-based cover layers. The technology used for foaming the core between the two outer layers is exclusive to KAPA® and unique worldwide.

The perfectly coordinated range of different cover layers is designed to suit every possible indoor visual communication application. For example, KAPA® is not only ideal for shop window decoration, for interior fittings or POS/POP applications but also as a board for model making as well as an excellent substrate for printing and advertising.

## CREATIVITY MADE EASY.

# KAPA®

KAPA® is a popular choice for architecture and design development purposes as it delivers the highest possible aesthetic standards. Its wide range of surfaces or the bi-colour cover layers create attractive contrasts and provide an excellent mounting board for presentations. Super lightweight KAPA® can be shaped into 3D geometries and is the ideal material for visualising spectacular designs, from the very smallest to extra-large.



## MATERIAL

Lightweight foamboard  
with polyurethane foam core

## COLOURS

White | Black

## THICKNESSES

3, 5 and 10 mm

## APPLICATIONS

Displays (POS/POP)  
Signage | Lettering  
Shop design  
Shop window decoration  
Exhibition design  
Short-term promotional campaigns  
Creative work

## PROCESSING

Digital printing | Screen printing  
Laminating | Mounting  
Cutting | Plotting  
Die cutting  
Glueing

Some product versions may have restricted processing options.  
Our experienced team of engineers at the Technical Department  
is available to offer help and answer any questions.

## PRODUCT

FOAM-X®, a lightweight foamboard with a polyurethane foam core and coated multi-layered recycled paper liners. FOAM-X® is suitable for indoor applications. The material provides an ideal weight-stability-ratio. Additionally, FOAM-X® can be processed very easily with manual tools.

# FOAM-X®

FOAM-X® foamboards are particularly suitable for short-term, indoor applications such as POS/POP displays, suspended signs for decoration and passe-partout picture frames.

## THE INDOOR ALLROUND BOARD.



PAPER AND  
LIGHTWEIGHT  
FOAMBOARDS

## MATERIAL

Lightweight foamboard  
with polystyrene foam core

## COLOURS

White | Black

## THICKNESSES

5, 10 and 25 mm

## APPLICATIONS

Displays (POS/POP)  
Signage | Lettering  
Shop design  
Shop window decoration  
Exhibition design  
Creative work

## PROCESSING

Digital printing | Screen printing  
Laminating | Mounting  
Painting | Spray Painting  
Lacquering  
Contour milling  
Water jet cutting  
Sawing  
Glueing

Some product versions may have restricted processing options.  
Our experienced team of engineers at the Technical Department  
is available to offer help and answer any questions.

# GATORFOAM®

## PRODUCT

GATORFOAM® is an extremely stiff lightweight foam-board with resin-impregnated paper liners on both sides and a polystyrene foam core.

Due to its great rigidity and flatness, as well as the availability of thicknesses of up to 25 mm, GATORFOAM® is ideally suited for displays and 3D applications, for demanding lamination options as well as decorative applications and décor in interior design.

The material's bright white surface guarantees high-quality direct printing results and exceptional image quality.

THE STRONG AND SIMPLE LIGHTWEIGHT.

