



DESIGN



DIGITAL



FLEXO



FULFILLMENT



LABELS



MAIL



OFFSET



PACKAGING



SIGNAGE



WIDE FORMAT

# Far more than just an MIS

## Think outside the box

In the type of fast-changing business environments, that we now operate in, people must adapt their strategies and innovate just to remain, let alone become successful. Here at IQ we specialize in transitioning you from your outdated MIS to a system designed and built for your future growth. Why not take a look outside the box?



# print IQ | Far more than just an MIS



# Far more than just an MIS

printIQ is a web based application, which means that everyone accesses it from an internet browser. Production-staff manage the factory while customers quote, order and track, all from within the same application. With no software to install, no separate web portal or online ordering system to add on, printIQ certainly does represent a quantum shift from what most printers are doing right now.

By utilizing a Cloud-based solution, printIQ offers shorter implementation times, lower up-front costs, and subscription-based payments. If you combine this with shorter, less costly development cycles and simplified functionality updates, it's not surprising that printIQ has a loyal fan-base the world over.

In a time when print management software desperately needs to keep up with the ever-changing market, very few providers have an active R&D programme in place. In contrast, IQ is focused on the future of print, and we back this up with a development team that are focused on delivering enhanced functionality to the core product.

When you combine a comprehensive off the shelf management workflow system (MWS) with custom software development skills, and print industry experts, our dedicated solutions can only deliver exceptional results.





# Core Modules

printIQ is a web based management workflow system — far more than just an MIS, that integrates business rules and component inputs such as labor and materials, to provide real-time quoting to an estimator or online client. The data then maps the optimum process path through the factory whilst providing full production, scheduling, inventory, outsource, and dispatch data to the relevant workflow modules.

The printIQ Core is made up of 8 modules that create a seamless, end-to-end estimating, ordering and production workflow encompassing everything needed for your future success in print.

## Quote Intelligence

**Everyone can quote. Remove the bottle-neck, take away the technical jargon and get the job underway.**

Quote Intelligence differs from traditional estimating software in that it understands the entire production process so it will map out all possible alternatives for the job to pass through the factory. We do this by integrating all your business rules within the pricing logic engine, with all the pricing rules based on your component inputs; such as labor, machines and materials.

The simplified quoting process then adds a layer of control so that those with little or no experience can produce a detailed quote whilst ensuring that they can only quote what you can produce. The quote is then linked to the file upload, job bag and all production, inventory, and dispatch details.

## Payment Gateway

**Process online, real time and secure payments.**

Payment Gateway provides real time and secure payments processed online from within your business application. Payment Gateway is a secure online credit card processing module that allows you and your customers to process credit cards without the need for dedicated terminals.

The module is integrated into printIQ, linking directly to your banks and accepting all the major credit cards. The secure administration interface allows you to generate reports and process refunds within your business.

## Workflow Manager

**Transform everyday tasks into a structured workflow.**

Workflow Manager is a dynamic tool that is used throughout the application to manage every aspect of your business and allow you to gain back control of your workflow.

The Workflow Manager is essentially a set of “to do” activities to which you assign actions, alerts and updates. You decide what and when tasks are completed, by whom and in what order. You create a transparent information network throughout the business from which everyone works offering seamless transition of work from one department to the next.

## Factory Manager

**Manage your factory in the most cost effective manner.**

Factory Manager provides a logical and easy to use communication framework for your staff to take control of the production process. Ultimately ensuring your staff can manage the production process without reliance on any particular individual, and the administration of your factory is exponentially simplified.

It starts through the automation of job processing by monitoring the Workflow Manager and all jobs passing from the quote stage into production. This creates a centralized and structured flow for jobs as they move through the process lifecycle. It also provides a real time screen-based job bag that captures time via online activation or barcode scanning.

## Inventory Manager

**Make raw material management simple and cost effective.**

Inventory Manager is integrated seamlessly with the Quote Intelligence module to deliver a feature rich extension to the estimating and job management process. The Inventory Manager allows users to classify all inventory items by suppliers, locations and type. This allows the user to easily add a raw material, assign it to a supplier and nominate its location/s within the factory.

The module is fully integrated with the other core printIQ modules so that every job is inventory aware. The module also provides automated notification for low material warning and automatic re-order for commonly used products. With the Inventory Manager module we make purchasing, invoicing, and reconciliation a seamless and simple process.

## Outsource Manager

**Make outwork a true extension of your core business.**

Outsource Manager provides full tendering functionality within printIQ, allowing users to obtain a range of prices for all outwork in a simple co-ordinated workflow. The module offers the ability to tender each operation, within the job, to multiple suppliers. The suppliers can enter their prices directly into their own automatically generated printIQ supplier portal without any visibility of their competitors.

Communication from suppliers, and pricing, is fed straight back to the outwork board from the integrated supplier portal. Upon job acceptance, notification is sent to the successful supplier, along with a link back to their updated supplier portal, now containing: the artwork, purchase order and instructions for dispatch. The supplier portal underpins the entire process with your suppliers having direct access to job details, instructions and artwork.

## Shipping Manager

**Ensure labor intensive tasks are a thing of the past.**

Shipping Manager comes complete with automated actions as well as a simple split delivery process allowing users to deliver a single job to multiple addresses. By creating the link between all the key aspects of the shipping environment and automating within a common platform – many traditional manual tasks are erased.

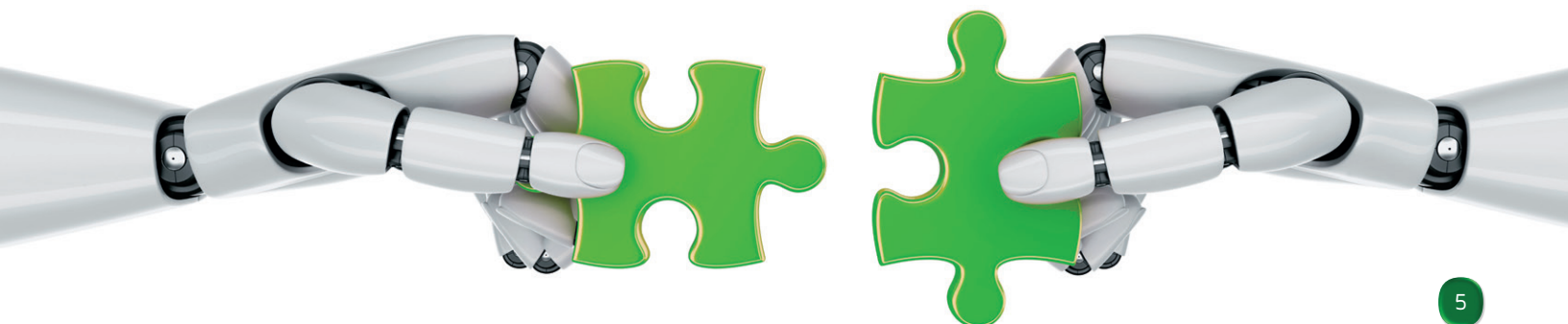
We also provide a simple split delivery process that allows users to deliver a single job to multiple addresses at the click of a button.

## Job Track

**A window into your business from end to end.**

Job Track identifies milestones as the job travels through the quoting, production, and shipping lifecycle. This includes the tracking of the job itself and any of the underlying components, through to scheduling and delivery data.

A plethora of information and reporting gains is at your fingertips. We wrap this up in a great looking interface that provides a handy and simple communication tool that you can share with your sales staff, account managers and your customers.





The printIQ Core is enhanced by extra modules that build on the core functionality of printIQ and allow you to build a bespoke system to suit your individual business.



The Further range will help you take the next step with your business, from key analytics and automated courier booking, through to simplified campaign management, capacity planning, data capture, and even job ganging.



The IQplus range offers two additions to the Core: Approve for integrated proofing initiated directly from the production workflow, and Store+ to create a logistics operation, with pick 'n' pack functionality, from within your print company.



With IQextend we can include options to add another internal site, a second factory, or even a full satellite location. We have a range of licenses that can be combined into the package at any stage to enhance the overall solution.



As an extension to the printIQ Core, we offer our Connect Modules, a range of optional tools that are designed to connect your business to a plethora of options.

**The printIQ product brochure available to download contains all the information about the IQ modules that are available as add-ons to the IQcore.**



At IQ we specialize in providing complete business solutions with a simple and jargon-free approach. We achieve this by having staff with both business and technical backgrounds so that we have a realistic and logical approach to our solutions. Our automation tools maximize the return on our

customers investment and we make a quantifiable difference to production efficiencies and ultimately the bottom line. Our functional approach means you don't need to be technologically minded, you focus on what you are good at and we'll do the same!



# The Future of Print

Our greatest strength is our ability to listen to what people are looking to achieve and then providing a solution that far exceeds their expectations

powered by print 

# Innovation not Imitation

## Australia

Level Two McDonald House  
37 Connor Street,  
Burleigh Heads, QLD 4220  
Australia

Call 1300 200 143

Email [letstalk@printIQ.com](mailto:letstalk@printIQ.com)

## New Zealand

Level Twelve  
86 Victoria Street  
Wellington, 6011  
New Zealand

Call 0800 725 662

Email [letstalk@printIQ.com](mailto:letstalk@printIQ.com)

## North America

315 E Eisenhower  
Parkway, Suite 2,  
Ann Arbor, MI 48108  
United States

Call 800 696 5513

Email [letstalk@printIQ.com](mailto:letstalk@printIQ.com)

## United Kingdom

Unit 8a Ground Floor  
Gatehouse Way  
Aylesbury, HP19 8XU  
United Kingdom

Call 01296 79 22 10

Email [letstalk@printIQ.com](mailto:letstalk@printIQ.com)



[www.printiq.com](http://www.printiq.com)