

A man with short grey hair and a beard, wearing a maroon sweater, stands against a white background with faint blue geometric lines. He is holding a fan of material samples in his hands. The samples include a large red sheet, a blue sheet, a light wood-grain sheet, and a dark grey sheet.

trotec

Laser and Rotary Materials 2022

valid from 01/2022

/ SETTING NEW STANDARDS

The ideal material for each application!

Trotec offers solutions for almost all requirements in the field of engraving, cutting and marking. High-quality, innovative laser system solutions as well as the highest quality consumables form this outstanding portfolio.

We aim to assist our customers in improving their profitability and productivity by supplying Trotec materials which offer superior results every time, offering additional services and providing a one-stop shop solution, allowing our clients to purchase all their products via one supplier in a single call or email.

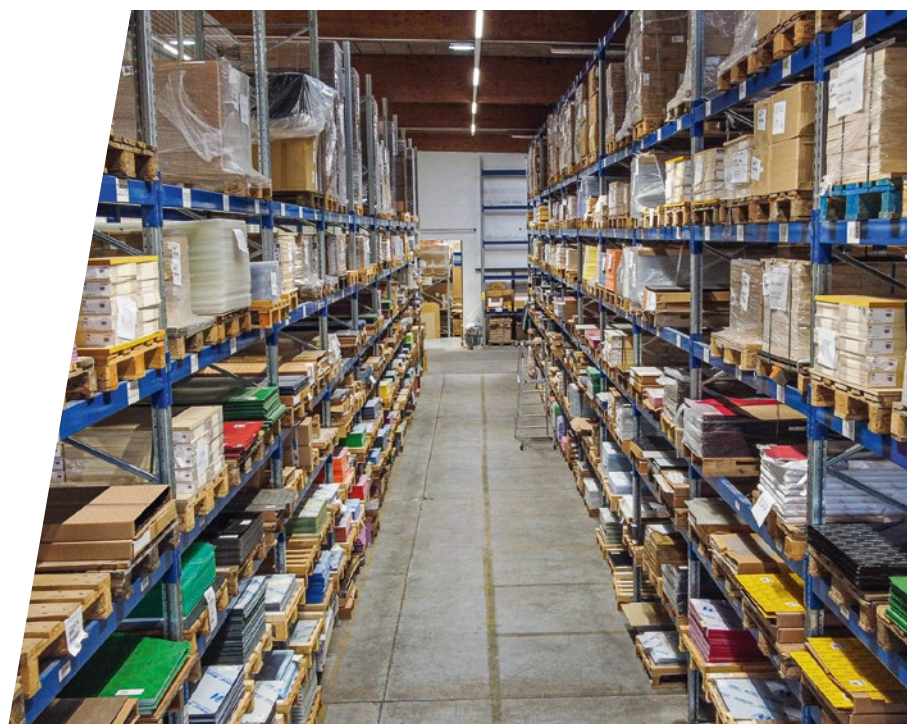
We are proud to manufacture the full range of Trotec laminates, complemented by additional high-quality products from carefully selected suppliers. Our aim is to make you more profitable with materials offering the following advantages:

- Engrave efficiently with fewer passes
- Reduced residue generated while engraving
- No sticky edges after laser cutting
- Minimal cleaning required
- Consistency in quality and colours
- High durability
- Next day delivery



Any colour deviations between the images shown in the catalogue and actual items are due to electronic depiction or typographical reasons and are not considered mistakes.

Please find our latest product range on our website.



Catalogue Contents

Plastic

Laser + Rotary

- 6** TroLase
- 8** TroLase Metallic Plus
- 9** TroLase Metallic
- 10** TroLase Reverse
- 11** TroLase ADA Signage
- 12** TroLase Thins
- 14** TroLase Textures
- 15** TroLase Lights
- 16** TroLase Foil
- 17** LaserFlex

Rotary

- 20** TroPly
- 21** TroPly Metallic Plus
- 22** TroPly Ultra
- 24** TroPly Ultra Reverse
- 25** TroPly Satins
- 26** ABET Rigid

Acrylic

- 31** TroGlass Colour Gloss
- 33** TroGlass Satins
- 35** TroGlass Reverse
- 36** TroGlass Mirror
- 37** TroGlass Clear
- 38** TroGlass XT
- 39** TroGlitter
- 40** TroGlass Pastel
- 41** TroGlass Neon

Metal

- 45** Anodised Aluminium
- 47** Trophy Aluminium
- 48** Stainless steel
- 49** DuraBlack®
- 50** AlumaMark®
- 51** Engraving Brass
- 52** Jewellers Brass

Wood

- 55** Solid Wood
- 56** Wood Veneer
- 57** Plywood
- 58** MDF
- 59** TroCraft Eco
- 60** LaserCork

Leather

- 62** LaserLeather

Paper

- 65** LaserPaper Colours
- 66** LaserPaper Wood

Gifts

- 69** Laserable Bottles
- 70** Magic Series - Mugs and Bottles
- 71** Mugs and Tumblers
- 72** Laserable Hip Flask
- 73** Aluminium Tags
- 75** Linen Books

Supplies

- 79** Signage Mounting Devices
- 81** Laser Marking Solutions
- 83** Colour Fillings
- 84** Workholding Mat
- 85** Laser Rubber Sheets
- 86** Nameplate holder
- 87** Cutters
- 88** Advertising Materials
- 89** TroMask

Service

- 2** Icon description
- 90** Overview Characteristics
- 92** Trotec Laser Machines

How to Read this Catalog

Sheet sizes & tolerances:

All material thicknesses are in MM. Sheet sizes are indicated in each product group description. Half sheets are cut to the indicated sizes. When ordering full sheets, please consider the following tolerances:

TroLase, TroLase Metallic, TroLase Metallic Plus, TroLase Reverse, TroLase ADA Signage, TroLase Thins, TroLase Textures, TroPly, TroPly Metallic Plus, TroPly Satins, TroPly Ultra, TroPly Ultra Reverse

Tolerances: width ± 1.5 mm;
length ± 3 mm

LaserWood

Tolerances: width and length: ± 1 mm
Thickness: -0,3 mm; + 0,5 mm

TroLase Lights

Tolerances: width +3 mm; -0 mm;
length +6 mm; -0 mm

TroGlass Series

Tolerances: width ± 3 mm;
length ± 3 mm
thickness (according to ISO 7823-1):
gauge 3 mm: ± 0.7 mm
gauge 4 mm: ± 0.8 mm
gauge 5 mm: ± 0.9 mm
gauge 6 mm: ± 1 mm
gauge 8 mm: ± 1.2 mm
gauge 10 mm: ± 1.4 mm
gauge 15 mm: ± 1.9 mm
gauge 20 mm: ± 2.4 mm

Icon legend



Laser material

Applicable to materials with an acrylic core. Many coated or anodised metals can be laser engraved or marked but cannot be vector cut



Rotary material

This material (usually with ABS core) is suitable for use with mechanical engraving devices.



Reverse engraving

This material is designed to be engraved on the back using mirrored graphics and then infilled or backlit to enhance the contrast against the coloured background.



Front engraving

This material is engraved from the front side.



Exterior use

This material is UV-resistant and suitable for outdoor use. Of course, it can also be used for indoor applications.



Indoor use

This material is suitable for interior applications.



Adhesive available

Adhesive backing can be applied on selected materials.



UV-Print

This material is suitable for UV/ digital printing.



Grey Icons

All symbols in grey mean that the respective application does not apply.

Cut to size legend



Cut to size

Articles of this product group can be ordered cut to your individual size.



Round corners

Articles of this product group can be ordered with rounded corners. Choose a radius and if the curve should look inside or outside.



Hole drilling

Articles of this product group can be drilled in various diametres.



Bevelled edges

Articles of this product group can be ordered with bevelled edges.

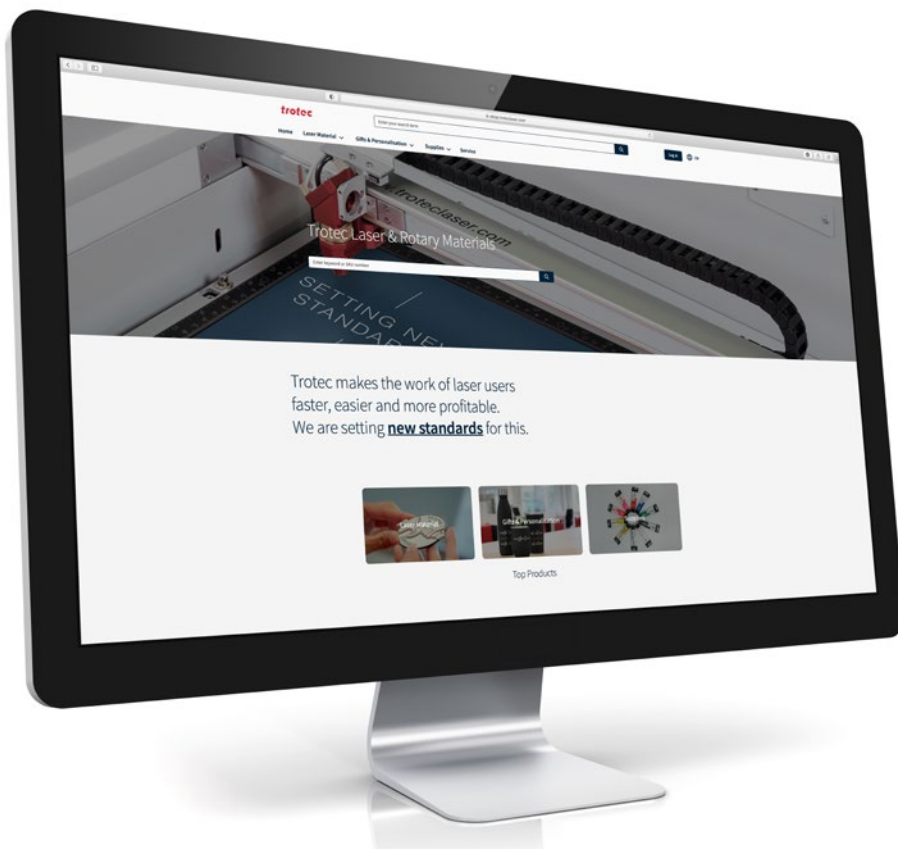


Order online from our engraving supplies webshop

You can quickly and easily purchase our high-quality laser and engraving materials online from our web shop at

shop.troteclaser.com

In our web shop you will find a comprehensive overview of products, up-to-date information about our materials, usage and processing tips, and DIY tutorials.



Save valuable time when ordering



View a complete overview of your online orders



Order and check order status 24/7



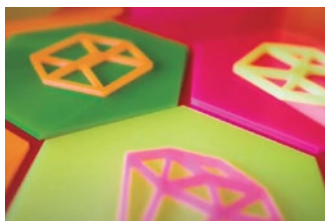
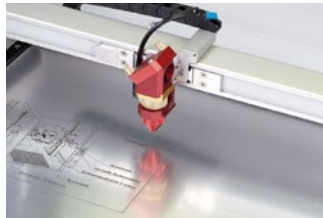
Tips and tricks provided by our experts



Be the first to find out about new products and offers



Collect TroPoints and redeem them against online orders



TroLase Series

Trotec's laserable laminates are specifically designed for high-performance laser and rotary engraving. Featuring a micro surfaced coating on a high-quality extruded acrylic core, which allows for detailed engravings at high production speeds. Materials are combined with a low residue characteristic, which significantly reduces your overall processing time and increases productivity. All high quality products are carefully tested and optimised for cost effective daily use. Our quality products make you more efficient and profitable. Within the Trotec laser and rotary materials portfolio, you will find a wide range of various colours, effects, gauges, wear and tear characteristics suitable for nearly any application.



Here you can find the entire TroLase series
in the Trotec webshop.
Scan QR Code now and order online.



TroLase



Material Features

Material: modified acrylic, colour coated, 2 ply / 3 ply

Finish: matt, gloss (where indicated)

Engraving depth: 0.08 mm

Cutting method: laser, saw, guillotine* (*not recommended for 3.2mm)

Sheet size: 1245 x 616 mm

- UV-resistant, acrylic based material
- Achieve detailed engraving at high production speed
- Superior composition minimises residue and reduces need for cleaning
- Ideal for interior and exterior signs, badges, trophy plates, industrial signs

Cut to size service



White/Red

0.8 L206-203
86585
1.6 L206-206
71584
3.2 L206-209
86591



White/Blue

0.8 L205-203
134776
1.6 L205-206
71565



White/Black

0.8 L204-203
86561
1.6 L204-206
71546
3.2 L204-209
71549



Red/White

0.8 L602-203
86565
1.6 L602-206
71828
3.2 L602-209
71831



Blue/White

0.8 L512-203
86581
1.6 L512-206
71782
3.2 L512-209
86582



Black/White

0.8 L402-203
86563
1.6 L402-206
71747
3.2 L402-209
71750



Burgundy/White

1.6 L622-206
71852



Sky Blue/Yellow

1.6 L517-206
132759



Smoke Grey/White

0.8 L312-203
163177
1.6 L312-206
71614



Orange/White

0.8 L612-203
86564
1.6 L612-206
71841



Sapphire/White

0.8 L502-203
86594
1.6 L502-206
71772



Dark Brown/White

0.8 L842-203
163176
1.6 L842-206
71909



Orange/Black

0.8 L614-203
111627
1.6 L614-206
71846



Navy Blue/White

1.6 L552-206
71796



English Walnut/White

1.6 L192-206
71515



Red/Black

1.6 L604-206
71835



Purple/White

1.6 L582-206
71804



Black/Red

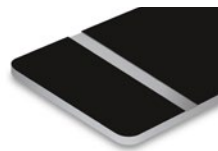
1.6 L406-206
71756



Pink/Black
1.6 L664-206
86593



Green/White
0.8 L932-203
86596
1.6 L932-206
71946
3.2 L932-209
91696



Black/Silver
1.6 L413-206
86587



Pink/White
1.6 L662-206
86588



Celadon Green/White
1.6 L972-206
71955



Gloss Black/White
1.6 L422-206
86580



Yellow/Red
1.6 L706-206
86590



Evergreen/White
0.8 L912-203
86586
1.6 L912-206
71937
3.2 L912-209
86592



Black/Gold
1.6 L417-206
71759



Yellow/Black
0.8 L704-203
86562
1.6 L704-206
71864
3.2 L704-209
86566



Almond/Black
1.6 L854-206
71911



Gloss Black/Gold
1.6 L427-206
86589



Light Blue/White
0.8 L562-203
127938
1.6 L562-206
71800

3 Ply



White/Black/White
1.6 L204-306
91640
3.2 L204-309
91644



Black/White/Black
3.2 L402-309
91645

TroLase Metallic Plus



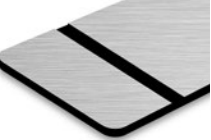





Material Features

Material: modified acrylic, colour coated, 2 ply
Finish: brushed metal
Engraving depth: 0.08 mm
Cutting method: laser, saw, guillotine* (*not recommended for 3.2mm)
Sheet size: 1245 x 616 mm

- Acrylic based material with an authentic metallic finish
- Thin top layer enables detailed engraving at high production speed
- Cost-effective, time-saving alternative to metal engraving
- Suitable for outdoor use, signs, badges, trophy plates, safety signs, funeral plates

Cut to size service



 <p>Brushed Stainless Steel/Black 0.8 LMT+314-203 87112 1.6 LMT+314-206 71615 3.2 LMT+314-209 87106</p>	 <p>Brushed Bright Nickel/Black 1.6 LMT+364-206 87116 3.2 LMT+364-209 87135</p>	 <p>Brushed Copper/Black 0.8 LMT+864-203 87136 1.6 LMT+864-206 87114 3.2 LMT+864-209 87141</p>
 <p>Brushed Stainless Steel/Blue 0.8 LMT+315-203 87137 1.6 LMT+315-206 87117 3.2 LMT+315-209 87139</p>	 <p>Brushed Stainless Steel/Red 0.8 LMT+316-203 87145 1.6 LMT+316-206 87118 3.2 LMT+316-209 87146</p>	 <p>Brushed Gold/Black 0.8 LMT+764-203 87115 1.6 LMT+764-206 71893 3.2 LMT+764-209 87108</p>

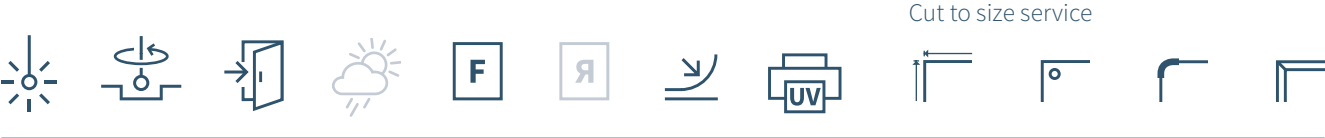
TroLase Metallic



Material Features

- Material:** modified acrylic, colour coated, 2 ply
- Finish:** brushed metal, smooth
- Engraving depth:** 0.08 mm
- Cutting method:** laser, saw, guillotine* (* Not recommended for 3.2 mm)
- Sheet size:** 1245 x 616 mm

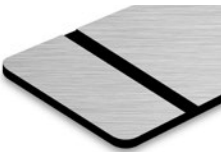
- Acrylic based laminate
- Authentic metallic finish
- Enables detailed engraving
- For interior signs, badges, trophy plates, safety signs or funeral plates



Cut to size service



Smooth Gold/Black
0.8 LMT714-203
 86661
1.6 LMT714-206
 86599
3.2 LMT714-209
 86662



Brushed Aluminium/Black
0.8 LMT354-203
 86632
1.6 LMT354-206
 71700
3.2 LMT354-209
 86634



Brushed Copper/Black
0.8 LMT894-203
 86660
1.6 LMT894-206
 71931



Brushed Gold/Black
0.8 LMT734-203
 86602
1.6 LMT734-206
 71881
3.2 LMT734-209
 92076



Brushed Silver/Black
0.8 LMT334-203
 86619
1.6 LMT334-206
 71625
3.2 LMT334-209
 86658



Brushed Deep Bronze/Black
1.6 LMT884-206
 86648



European Gold/Black
0.8 LMT754-203
 86600
1.6 LMT754-206
 71889
3.2 LMT754-209
 86649



Smooth Silver/Black
0.8 LMT344-203
 86598
1.6 LMT344-206
 86597
3.2 LMT344-209
 86656

TroLase Reverse



Material Features

Material: modified acrylic, reverse colour coated, 2 ply

Finish: matt, gloss (gold and silver)

Engraving depth: 0.08 mm

Cutting method: laser, saw

Sheet size: 1245 x 616 mm

- Transparent acrylic fascia with a coloured coating on the reverse side
- Mirror-inverted engraving on the reverse side
- Engraved area can be backlit or filled with your choice of acrylic paint
- Perfect for multi-coloured interior and exterior signs, safety signs, promotional and display signage and control panels
- An additional third layer significantly reduces cleaning time and enhances the depth of colour



Cut to size service



Matt/Red
1.6 LR601-206
71810



Matt/Ivory
1.6 LR221-206
86557



Matt/Silver
1.6 LR341-206
71632



Matt/Blue
1.6 LR511-206
71773



Matt/Black
0.5 LR401-202
129011
1.6 LR401-206
71732



Matt/Gold
1.6 LR711-206
71873



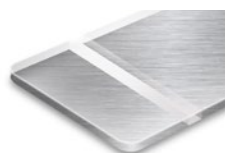
Matt/Green
1.6 LR931-206
86556



Matt/Yellow
1.6 LR701-206
71853



Matt/White
0.5 LR201-202
129010
1.6 LR201-206
71521



Brushed/Silver
1.6 LR351-206
71684



Gloss/Silver
1.6 LR340-206
71630



Gloss/Gold
1.6 LR710-206
71872

TroLase ADA Signage



Material Features

Material: modified acrylic, 1 ply

Finish: matt

Cutting method: laser, saw, guillotine

Sheet size: 1245 x 616 mm, 1220 x 610 mm*

*White, Marine Blue and Silver only

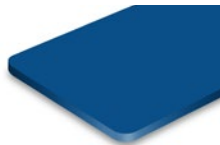
- Solid, dyed, acrylic based material for indoor and outdoor use
- Popular material for the production of braille and tactile signage
- Ideal for cutting out letters and for creating 3-dimensional signs
- Thinner options are a popular medium for architectural model making

Cut to size service



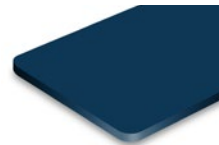
Red

0.8 LS601-103
71806
1.6 LS601-106
71807
3.2 LS601-109
86532



Blue

0.8 LS501-103
71767
1.6 LS501-106
71768
3.2 LS501-109
86534



Marine Blue*

1.6 LS502-106
86514



Black

0.8 LS401-103
71727
1.0 LS401-104
86504
1.6 LS401-106
71729
3.2 LS401-109
71730



Bright White

0.8 LS204-103
71526
1.0 LS204-104
86412
1.6 LS204-106
71527
3.2 LS204-109
71528



White*

0.8 LS201-103
71519
1.0 LS201-104
86411
1.6 LS201-106
86506



Silver*

0.8 LS304-103
86517



Yellow

1.6 LS701-106
86526



Green

1.6 LS901-106
86523
3.2 LS901-109
126542



Clear

0.8 LS101-103
71505
1.6 LS101-106
71507

TroLase Thins



Material Features

Material: modified acrylic, colour coated, 1 ply / 2 ply

Finish: matt, gloss, brushed metal

Engraving depth: 0.08 mm

Cutting method: laser, saw, guillotine

Sheet size: 1245 x 614 mm

- Extremely flexible and ideally suited for curved surfaces
- Acrylic base and thin foiled surface enable detailed engravings
- Elegant engravings for interior signs, badges, trophy and award plates as well as industrial signage
- Solid single ply white and black options are a proven medium for 3D model makers

Cut to size service



Brushed Gold/Black
0.5 LT734-202
86537



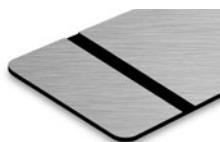
Brushed Copper/Black
0.5 LT894-202
71927



Yellow/Black
0.5 LT744-202
71854



European Gold/Black
0.5 LT754-202
71885



Brushed Silver/Black
0.5 LT334-202
86544



Red/White
0.5 LT602-202
71814



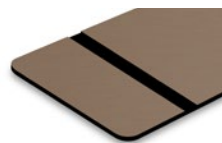
Trophy Gold/Black
0.5 LT794-202
86539



Trophy Silver/Black
0.5 LT394-202
86541



Blue/White
0.5 LT512-202
71774



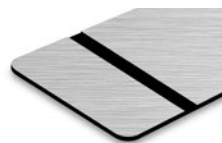
Deep Bronze/Black
0.5 LT884-202
71917



Smooth Silver/Black
0.5 LT344-202
86543



Black/White
0.5 LT402-202
71735



Brushed Aluminum/Black
0.5 LT354-202
71688



White/Black
0.5 LT204-202
71529



**Gloss Black/
Silver**
0.5 LT423-202
 71760



Black/Gold
0.5 LT417-202
 71757



Black/Silver
0.5 LT413-202
 91642



Celestial Blue/Gold
0.5 LT577-202
 86540



Port Wine/Gold
0.5 LT677-202
 86552

1 ply



White single ply
0.5 LT202-102
 86542



Black single ply
0.5 LT404-102
 86545

TroLase Textures



Material Features

Material: modified acrylic (core and cap), 1 ply / 2 ply

Finish: textured matt

Engraving depth: 0.18 mm

Cutting method: laser, saw, guillotine* (*not recommended for 3.2 mm)

Sheet size: 1220 x 610 mm

- Extra durability and scratch resistance due to textured acrylic cap
- Textured, matt surface is non-reflective and easy to clean
- UV- and weather-resistant material for demanding environments
- Ideal for industrial applications, signs in harsh environments, safety signs, control panels

Cut to size service



Red/White

1.6 LTX642-206
87322
3.2 LTX642-209
87355



Royal Blue/White

1.6 LTX592-206
87323
3.2 LTX592-209
87340



Black/White

1.6 LTX422-206
87326
3.2 LTX422-209
87346



White/Red

1.6 LTX246-206
87339



White/Blue

1.6 LTX205-206
87347



White/Black

1.6 LTX244-206
87316
3.2 LTX244-209
87344



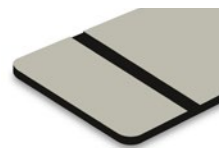
Yellow/Black

1.6 LTX774-206
87330



Sapphire/White

1.6 LTX503-206
87331



Ash Grey/Black

1.6 LTX374-206
87341



Green/White

1.6 LTX962-206
87338
3.2 LTX962-209
123648

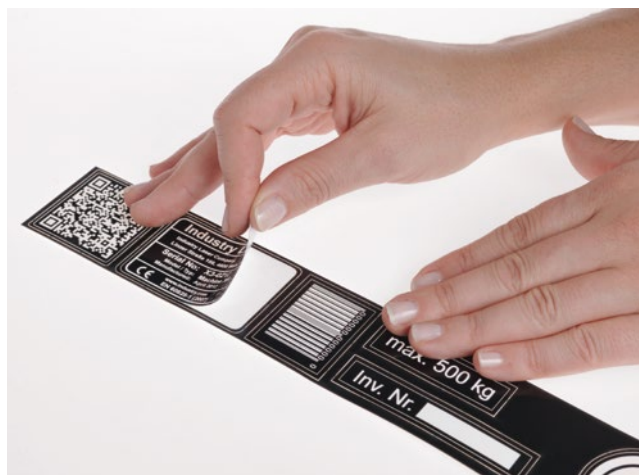
1 ply



Transparent

1.6 LTX101-106
111626

TroLase Lights

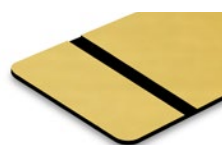


Material Features

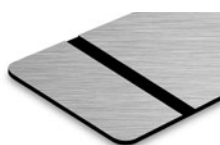
Material: PET-foil, 2 ply
Finish: gloss, brushed metal, matt
Engraving depth: 0.04 mm
Cutting method: laser, guillotine
Sheet size: 600 x 305 mm

- Highly flexible and robust film with an adhesive coating on the reverse
- Adheres perfectly to various materials such as metals, plastic, rubber and wood
- Popular material in industry and commerce
- Perfect for labels, stickers, badges as well as for trophy plates

Cut to size service



Smooth Gold/Black
0.1 LL74-201
71875



Brushed Silver/Black
0.1 LL63-201
71621



White/Black
0.1 LL62-201
71531



Brushed Brass/Black
0.1 LL64-201
71891



Smooth Silver/Black
0.1 LL73-201
71641



Yellow/Black
0.1 LL68-201
86554



Brushed Bronze/Black
0.1 LL69-201
71919



Black/Silver
0.1 LL75-201
71762



Black/White
0.1 LL61-201
71738



Black/Gold
0.1 LL65-201
71765

TroLase Foil



Material Features

Material: modified acrylic foil, 2 ply
Finish: matt, gloss, metallic
Engraving depth: 0.04 mm
Cutting method: laser, guillotine
Sheet size: 610 x 305 mm

- Thin, two-layer, flexible engraving material featuring a micro-surfaced coating on an acrylic core
- Comes with an adhesive backing and is UV-stable
- Allows for special processing options, such as kiss-cutting
- Ideal for trophy and industrial labelling, functional signage and custom stickers



Cut to size service



White/Black
0.2 139687



Green/White
0.2 139691



Gold brushed/Black
0.2 139695



Red/White
0.2 139688



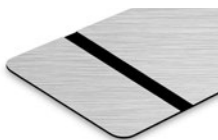
Yellow/Black
0.2 139692



Copper brushed/Black
0.2 139696



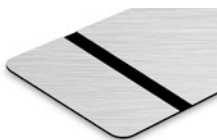
Blue/White
0.2 139689



**Stainless steel
brushed/ Black**
0.2 139693



Black matt/White
0.2 139685



Nickel brushed/Black
0.2 139694



Black glossy/White
0.2 139686

LaserFlex



Material Features

Material: polyurethane foil on transfer film

Finish: matt

Engraving depth: 0.04 mm

Cutting method: laser, guillotine

Sheet size: 420 x 297 mm (A3)

- Suitable for customising textiles
- Finest details with intricate motifs can be achieved
- Apply to textiles using a transfer press
- Ideal for T-shirts, fabric bags, cotton, polyester, blended fabrics
- Less suitable for nylon and coated textiles



Cut to size service



White
0.1

LF200
65905



Red
0.1

LF600
65942



Black
0.1

LF400
65938



LaserFlex has been specially designed to not only be cut but also to be weeded by the laser. This means that it is no longer necessary to mechanically remove excess material between graphics and letters or along edges.

Recommended transfer conditions:

- Temperature: 175 °C
 - Duration: 60 seconds
- LaserFlex film can be washed at up to 60 °C. Any residues can be removed by washing.

TroPly Series

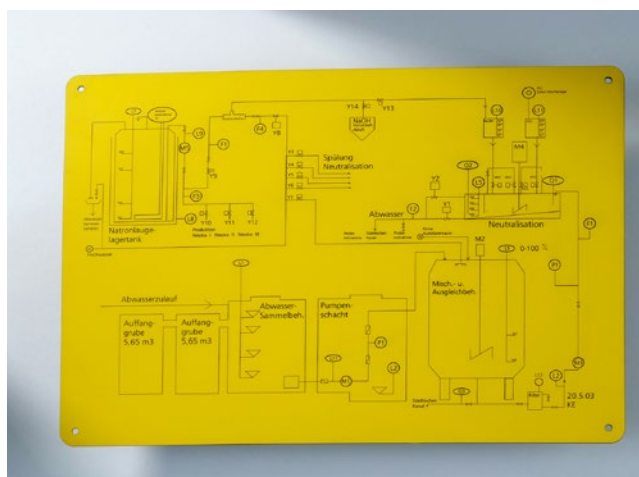
Our rotary engraving materials range of products are ideal for multiple applications. Product properties range from thin surfaces for engraving intricate details up to strong, robust surfaces ideal for more demanding environments. Some of Trotec's TroPly materials also have a reflection-free surface, which allows for clear and easy-to-read designs to be created from even the smallest engraved images.



Here you can find the entire TroPly series in the Trotec webshop. Scan QR Code now and order online.



TroPly



Material Features

Material: ABS, 2 ply / 3 ply

Finish: matt

Engraving depth: 0.08 mm

Cutting method: saw, guillotine* (*not recommended for 3.2mm)

Sheet size: 1245 x 616 mm

- Features a thin surface coating
- The reflection-free surface allows clear and easy-to-read designs
- An ideal choice for an array of interior applications, particularly when a high degree of detail is required
- Perfect for information and safety signs, trophy plates as well as for badges



Cut to size service



Yellow/Black

0.8 P744-203
86676
1.6 P744-206
71883



White/Black

0.8 P204-203
86664
1.6 P204-206
71534



Red/White

1.6 P602-206
71818



Blue/White

1.6 P512-206
71777



Navy blue/White

1.6 P552-206
71795



Light Blue/White

1.6 P562-206
71799



Green/White

1.6 P932-206
71940



Black/White

0.8 P402-203
86665
1.6 P402-206
71742

3 ply



White/Black/White

3.2 P204-309
71554

TroPly Metallic Plus



Material Features

Material: ABS, 2 ply
Finish: brushed and smooth metal
Engraving depth: 0.08 mm
Cutting method: saw, guillotine
Sheet size: 1245 x 616 mm

- Metallic effect laminate with a scratch resistant top coating
- Features a special protective layer
- Particularly resistant to scratches and wear
- Suitable for trophy and funeral plates, information and interior signs



Cut to size service



Brushed Gold/Black
0.8 PMT+734-203
 159966
1.6 PMT+734-206
 71880



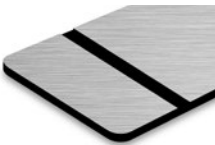
Brushed Silver/Black
1.6 PMT+334-206
 71624



Smooth Silver/Black
0.8 PMT+344-203
 159964
1.6 PMT+344-206
 71644



Brushed European Gold/Black
1.6 PMT+754-206
 71888



Brushed Aluminium/Black
0.8 PMT+354-203
 159965
1.6 PMT+354-206
 71699

TroPly Ultra



Material Features

Material: multi surface impact acrylic, 1 ply / 2 ply / 3 ply*

Finish: matt, gloss

Engraving depth: 0.30 mm

Cutting method: saw

Sheet size: 1220 x 610 mm

*Certain colours available in 3ply. Please note that 3ply TroPly Ultra is gloss on one side and matt on the other.

- Acrylic laminate for internal and external applications
- Ideal solution for harsh environments thanks to a thicker cap
- This thicker cap offers resistance to abrasion
- Perfect for external professional signage, plant labels and safety signs

Cut to size service



matt



White/Red
1.6 PU206-206
91723
3.2 PU206-209
91736



Blue/White
1.6 PU512-206
91725
3.2 PU512-209
91734



White/Black
1.6 PU204-206
91715
3.2 PU204-209
91730



Red/White
1.6 PU602-206
91716
3.2 PU602-209
91733



Sapphire/White
1.6 PU562-206
91721



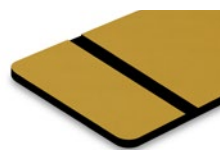
Black/White
1.6 PU402-206
91718
3.2 PU402-209
91731



Ruby/White
3.2 PU632-209
91735



Yellow/Black
1.6 PU704-206
91726
3.2 PU704-209
91738



Vintage Gold/Black
1.6 PU774-206
91720



Bright Green/White
1.6 PU932-206
91724



Safety Yellow/Black
1.6 PU794-206
91719



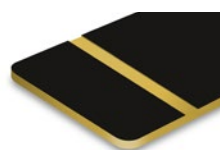
Vintage Silver/Black
1.6 PU384-206
91717
3.2 PU384-209
91737



Hunter Green/White
1.6 PU992-206
91728



White/Blue
1.6 PU205-206
91727



Black/Gold
1.6 PU417-206
91729



Polar White/Black
1.6 PU234-206
104841

gloss



Red/White

1.6 PH602-206
91793
3.2 PH602-209
91813



White/Black

1.6 PH204-206
91790
3.2 PH204-209
91811



Vintage-Silver/Black

1.6 PH384-206
91794
3.2 PH384-209
91812



Black/White

1.6 PH402-206
91791
3.2 PH402-209
91816



Safety Yellow/Black

1.6 PH794-206
91795
3.2 PH794-209
91823



Vintage-Gold/Black

1.6 PH774-206
91792
3.2 PH774-209
91815



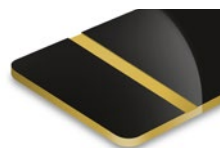
White/Red

1.6 PH206-206
91799
3.2 PH206-209
91819



Blue/White

1.6 PH512-206
91797
3.2 PH512-209
91822



Black/Gold

1.6 PH417-206
91805



Green/White

1.6 PH932-206
91803
3.2 PH932-209
91824



Sapphire/White

1.6 PH562-206
91796



Polar White/Black

1.6 PH234-206
104864



Pine Green/White

1.6 PH962-206
91800



White/Blue

1.6 PH205-206
91798



Yellow/Black

1.6 PH704-206
91806
3.2 PH704-209
91817

1 ply (one side matt and one side gloss)



Clear single ply

0.8 PUR101-103
91697
1.0 PUR101-104
91698
1.6 PUR101-106
91699
3.2 PUR101-109
91712

3 ply (one side matt and one side gloss)



Red/White/Red

1.6 PH602-306
91808



White/Black/White

1.6 PH204-306
91804
3.2 PH204-309
91820



Black/White/Black

3.2 PH402-309
91818

TroPly Ultra Reverse



Material Features

Material: Laminated impact acrylic, 2 ply

Finish: matte, gloss

Engraving depth: 0,30 mm

Cutting method: saw, guillotine

Sheet size: 1220 x 610 mm

- Transparent acrylic glass with a coating on the back
- A transparent image is created by engraving the coloured back, which can then be filled with different colours
- UV stable and weatherproof material
- Suitable for indoor and outdoor use

Cut to size service



matt



Clear/White
1.6 PUR201-206
91700
3.2 PUR201-209
91713



Clear/Sapphire
1.6 PUR561-206
91702



Clear/Black
1.6 PUR401-206
91701
3.2 PUR401-209
91711



Clear/Vintage Silver
1.6 PUR371-206
91703

gloss



Clear/White
1.6 PHR200-206
91771
3.2 PHR200-209
91777



Clear/Yellow
3.2 PHR700-209
91787



Clear/Green
1.6 PHR900-206
91775
3.2 PHR900-209
91784



Clear/Ivory
3.2 PHR230-209
91782



Clear/Sapphire
3.2 PHR560-209
91783



Clear/Teal Green
3.2 PHR910-209
91786



Clear/Black
1.6 PHR400-206
91773
3.2 PHR400-209
91778



Clear/Red
1.6 PHR600-206
91772
3.2 PHR600-209
91780



Clear/Burgundy
3.2 PHR630-209
91785

TroPly Satins



Material Features

Material: Acrylic cap / ABS core, 2 ply

Finish: gloss-brushed

Engraving depth: 0.30 mm

Cutting method: saw, guillotine

Sheet size: 1220 x 610 mm

- Interior laminate available in an extensive colour range
- Supplied as standard with a brushed finish
- The solid cap offers a highly durable and scratch resistant surface
- Ideally suited to internal signage, name plates, key tags and personal identification



Cut to size service



Red/White
1.6 PS602-206
91745



Polar White/Black
1.6 PS234-206
91742



Blue/White
1.6 PS512-206
91746



Yellow/Black
1.6 PS704-206
91743



Black/White
1.6 PS402-206
91747



Green/White
1.6 PS932-206
91755



Orange/White
1.6 PS612-206
91757

ABET Rigid



Material Features

Material: paper and phenolic based thermosetting resin 3-ply

Finish: semi-gloss

Engraving depth: 0.20 mm

Cutting method: saw

Sheet size: 1220 x 1220 mm, 1220 x 610 mm

- ABET Rigid is a high pressure laminate suited to internal use
- It has a hard, durable melamine surface requiring minimal maintenance
- Provides a cost effective and practical solution for industrial labels and signage
- Ideally suited to the electrical industry, tallies, ID tags and key fobs
- Non-flammable up to temperatures of 400°C conforming to the British Adopted European Standard BS EN 438-7:2005



Cut to size service



White/Black/White
1220 x 1220 mm

1.6 49841

3.0 67186

1220 x 610 mm

1.6 50498

3.0 50499



Black/White/Black
1220 x 1220 mm

1.6 67183

3.0 67193

1220 x 610 mm

1.6 50496

3.0 83204



Green/White/Green
1220 x 1220 mm

1.6 67182

3.0 67192

1220 x 610 mm

1.6 50484

3.0 83226



White/Red/White
1220 x 1220 mm

1.6 67177

3.0 67187

1220 x 610 mm

1.6 83238

3.0 83239



Yellow/Black/Yellow
1220 x 1220 mm

1.6 67184

3.0 67194

1220 x 610 mm

1.6 50497

3.0 50491



Grey/White/Grey
1220 x 1220 mm

1.6 83329

3.0 83338

1220 x 610 mm

1.6 83341

3.0 83332



White/Blue/White
1220 x 1220 mm

1.6 67178

3.0 67188

1220 x 610 mm

1.6 50481

3.0 83228



Orange/White/Orange
1220 x 1220 mm

1.6 83320

3.0 83327

1220 x 610 mm

1.6 83323

3.0 83333



Blue/White/Blue
1220 x 1220 mm

1.6 67181

3.0 67191

1220 x 610 mm

1.6 50495

3.0 83205



White/Green/White
1220 x 1220 mm

1.6 67179

3.0 67189

1220 x 610 mm

1.6 83229

3.0 83231



Red/White/Red
1220 x 1220 mm

1.6 67180

3.0 67190

1220 x 610 mm

1.6 83227

3.0 50492



**Brushed Gold/Black/
Brushed Silver**
1220 x 1220 mm

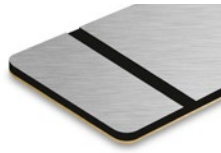
1.6 67185

3.0 67195

1220 x 610 mm

1.6 83475

3.0 50489



**Matt Silver/Black/
Brushed Gold**
1220 x 1220 mm

1.6 83240

3.0 83316

1220 x 610 mm

1.6 83465

3.0 83468

TroGlass Series

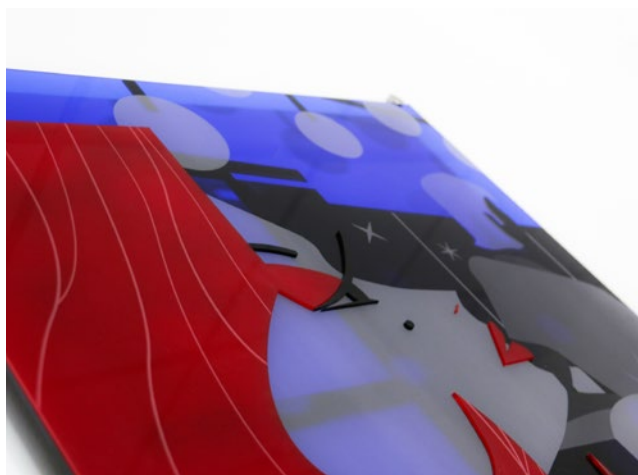
Our TroGlass acrylic series is available in an extensive assortment of colours, in variations of transparent, fluorescent, translucent and non-transparent, as well as different surface structures. The transparent, fluorescent and translucent colours offer constant light transmission superior to similar glass colours. The wide range of colours and different surface characteristics make Trotec's acrylic glass the number one choice for outstanding and eye-catching applications. Please note that: thickness tolerances are available on page 2.



Here you can find the entire TroGlass series
in the Trotec webshop.
Scan QR Code now and order online.



TroGlass Colour Gloss



Material Features

Material: cast acrylic

Finish: gloss

Translucency: transparent, fluorescent, translucent, non-transparent

Cutting method: laser, saw

Sheet size: $\frac{1}{1}$ 1216 x 606 mm (metallic: 1224 x 610 mm)

$\frac{1}{2}$ 606 x 606 mm (metallic: 610 x 610 mm)

***Please note that products 129879 (Metallic Anthracite-Silver) and 129878 (Metallic Bright Silver) are not suitable for exterior applications.**

- Constant light transmission superior to similar glass colours
- Glossy finish on both material sides
- High impact resistance
- Shop fitting, interior design or illumination and lighting are typical applications

Cut to size service



Transparent



Glass Look
3.0 117143



Red
3.0 117131



Ice Blue
3.0 117132



Yellow
3.0 117129



Green
3.0 117139



Blue
3.0 117133



Orange
3.0 117130



Dark Green
3.0 117140



- Perfect light transmission with up to 92 % in clear version - better than glass
- Impact resistance 8 to 10 times higher than glass
- Elegant polished finish when laser cut

- High resistance to external agents and UV rays
- UV stable and weatherproof
- Easy to work with (laser cut/engrave, bend, glue, thermoforming, milling)

Fluorescent



Green Fluorescent
3.0 117137



Red Fluorescent
3.0 117136



Ice Blue Fluorescent
3.0 117138

Non-transparent



White
3.0 117070



Grey
3.0 117127



Black
3.0 117128

Opal



White
3.0 117069



Fuchsia
3.0 117105



Sky Blue
3.0 117125



Yellow
3.0 117071



Green
3.0 117123



Blue
3.0 117126



Orange
3.0 117103



Dark Green
3.0 117124



Lilac
3.0 117141



Red
3.0 117104

Metallic exterior use



Gold
3.0 129875



Silver
3.0 129877

Metallic interior use



Bright Silver
3.0 129878



Anthracite-Silver
3.0 129879

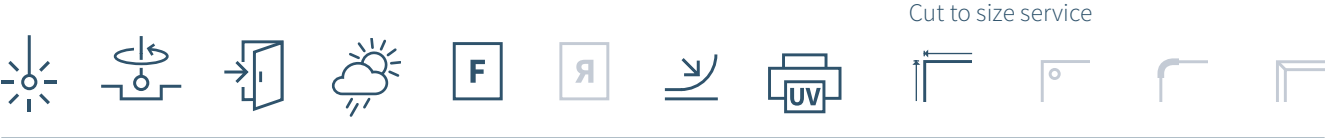
TroGlass Satins



Material Features

Material: cast acrylic
Finish: matt
Translucency: translucent, non-transparent
Cutting method: laser, saw
Sheet size: $\frac{1}{1}$ 1216 x 606 mm
 $\frac{1}{2}$ 606 x 606 mm

- Satin surface on both sheet sides
- Elegant and soft feeling and appearance
- High light transmission
- Ideal for illumination and backlighted signs, POS displays, interior design



Cut to size service

Translucent



Clear
3.0 117034



Light Pink
3.0 117037



Blue
3.0 117040



Yellow
3.0 117052



Fuchsia
3.0 117068



Aquamarine
3.0 117035



Bright Orange
3.0 117054



Violet
3.0 117041



Lemon Green
3.0 117057



Red
3.0 117038

Non-transparent



White
3.0 117055



Black
3.0 117059

Night & Day



Night and Day
3.0 117147

LED



White matt
3.0 117208



Special Product TroGlass Night & Day: allows the creation of sophisticated signs, giving the possibility of having 2 colors in the same product:

- black when not backlighted
- bright when the sign is backlighted

TroGlass LED is an optimised cast acrylic sheet, developed to adjust itself to the particularity of LED lighting:

- Colours are formulated to meet the wavelength of LEDs: the sheets maintain the same colour tone with backlights being turned on and off.
- It allows a high light transmission. The strong diffusion characteristics eliminate spot effects.

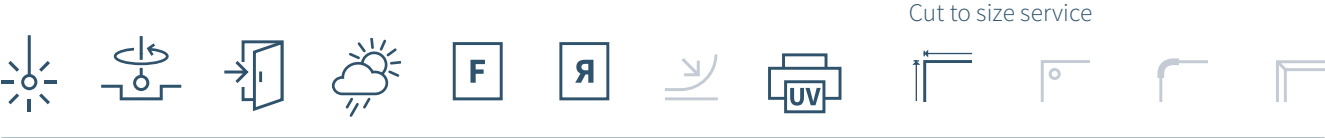
TroGlass Reverse



Material Features

Material: cast acrylic with back-coating, 2 ply
Finish: gloss
Engraving depth: 0.08 mm
Cutting method: laser, saw
Sheet size: 1220 x 610 mm

- Transparent acrylic with a coloured coating on the reverse side
- Reverse engraved areas can be infilled with colours or backlit
- Black backing reduces cleaning time and enhances depth of colour
- Ideal for multi-coloured interior and exterior signs, safety signs, promotional and display signage



Cut to size service



Gloss/White
3.0 TG4-200
 20625
5.0 TG5-200
 20632



Gloss/Red
3.0 TG4-600
 20630
5.0 TG5-600
 20636



Gloss/Light Blue
3.0 TG4-510
 119381
5.0 TG5-510
 119393



Gloss/Green
3.0 TG4-931
 65005
5.0 TG5-931
 65008



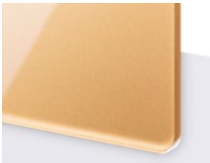
Gloss/Blue
3.0 TG4-500
 20629
5.0 TG5-500
 20635



Gloss/Gold
3.0 TG4-710
 20631
5.0 TG5-710
 20637



Gloss/Silver
3.0 TG4-330
 20627
5.0 TG5-330
 20633



Gloss/Bronze Gold
3.0 TG4-700
 119375
5.0 TG5-700
 119377



Gloss/Black
3.0 TG4-400
 20628
5.0 TG5-400
 20634

TroGlass Mirror



Material Features

Material: extruded acrylic

Finish: gloss

Cutting method: laser, saw

Sheet size: $\frac{1}{4}$ 1220 x 610 mm
 $\frac{1}{2}$ 608 x 610 mm

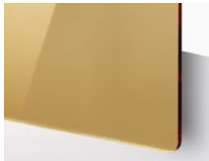
- TroGlass Mirror is an extruded acrylic glass with a reflective surface
- Perfect alternative to real glass mirror due to lighter weight and higher breakage resistance
- Mirror-inverted engraving on the reverse side
- Used for wall decorations, jewellery, displays, interior design, POS and more



Cut to size service



Silver
2.9 144081



Gold
2.9 144142



Rosé gold
2.9 144143

TroGlass Clear



Material Features

Material: cast acrylic, 1 ply

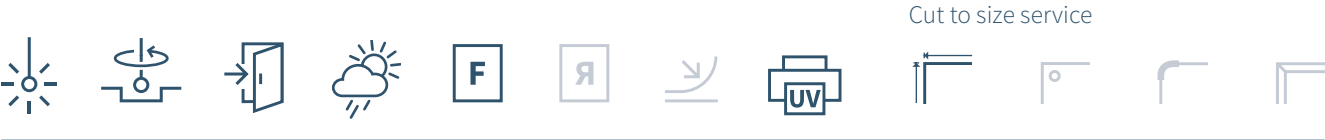
Finish: gloss

Cutting method: laser, saw

Thickness and sheet sizes (mm):

	$\frac{1}{4}$	$\frac{1}{2}$
3, 4, 5, 10, 15, 20:	1216 x 606	606 x 606
6, 8:	1200 x 598	598 x 598

- Perfect optical clarity and therefore a great alternative to glass
- Formable, UV-stable and hard-wearing
- Polished laser cut edges, no post-processing necessary
- Ideal for interior and exterior signs, promotional & display signage



Clear
20.0 166528



Clear
15.0 166527



Clear
10.0 166526



Clear
8.0 121865



Clear
6.0 121863



Clear
5.0 121862



Clear
4.0 121801



Clear
3.0 121800



Clear
2.0 5266

TroGlass XT



Material Features

Material: extruded acrylic, 1 ply

Finish: gloss

Cutting method: laser, saw

Sheet size: $\frac{1}{1}$ 1216 x 606 mm
 $\frac{1}{2}$ 606 x 606 mm

- Transparent, extruded acrylic glass with low thickness tolerance
- Fantastic light transmission and excellent resistance to outdoor weathering
- Material of choice when high thickness accuracy is important
- Perfect for POS displays, signage, model making and for interlocked applications



Cut to size service



Clear
5.0 162787



Clear
3.0 162785



Clear
2.0 163463

TroGlitter



Material Features

Material: cast acrylic

Finish: gloss

Cutting method: laser, saw

Sheet size: $\frac{1}{4}$ 1020 x 600 mm
 $\frac{1}{2}$ 510 x 600 mm

- TroGlitter is a cast acrylic that is mixed with glitter particles evenly distributed throughout the material
- Wide opportunities for creative minds and designers, with new visual effects possible
- Material is colour stable with no bleaching or fading
- Ideal for sales displays, gifts and even lettering applications

Cut to size service



Red
3.0 153705



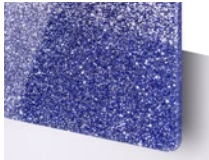
Black
3.0 144645



Silver
3.0 144640



Dark Red
3.0 144643



Blue
3.0 144646



Gold
3.0 144641



Pink
3.0 144644



Green
3.0 153706

TroGlass Pastel



Material Features

Material: cast acrylic
Finish: matt, gloss
Translucency: opaque, non-transparent
Cutting method: laser, saw
Sheet size: $\frac{1}{1}$ 1216 x 606 mm
 $\frac{1}{2}$ 606 x 606 mm

- Flexible application possibilities due to one gloss and one matt side
- Excellent physical properties of cast acrylic sheet
- Material is colour stable and will not bleach or fade
- Typical applications include: visual communication & retail, interior design, shop fitting

Cut to size service



Mint
3.0 160823



Yellow
3.0 160825



orange •
3.0 160828



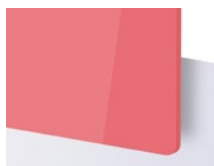
Lilac
3.0 160824



Turquoise
3.0 176307



Light Blue
3.0 160829



Raspberry
3.0 176304



Lavender
3.0 176306



Pink
3.0 160826

- as long as stock lasts

TroGlass Neon



Material Features

Material: cast acrylic

Finish: gloss

Cutting method: laser, saw

Sheet size: $\frac{1}{1}$ 1216 x 606 mm
 $\frac{1}{2}$ 606 x 606 mm

- Combines the advantages of opalescence and striking fluorescence
- Offers excellent resistance to outdoor weathering, making Neon perfect for exterior applications
- Create unique, fashionable accessories of your own, POS displays, merchandising solutions or special gift toppers
- Bring your products to life with this cast acrylic



Cut to size service



Pink
3.0 162490



Orange
3.0 162512



Yellow •
3.0 162491



Green
3.0 162513

• as long as stock lasts

Metals

Trotec offers metal products for both laser engraving and mechanical engraving. One product group is the anodised aluminium, which features a protective anodised coating that remains intact during laser processing. The image contrast is caused by the removal of the coloured coating and almost photographic qualities can be achieved. Additionally, a detailed white engraved image is created. We offer metal for engraving in different colours and also with a matt or a gloss surface.



Here you can find the entire metal series in the Trotec webshop.
Scan QR Code now and order online.



30110-30

trotec

www.trotec-materials.com | www.troteclaser.com

Anodised Aluminium



Material Features

Material: anodised aluminium, 1 ply

Finish: matt, gloss

Cutting method: saw, guillotine

Sheet size: 1000 x 500 mm

*** Please note that our aluminium sheets are only coated on one side**

- Suitable for both engraving with a CO2 laser and with mechanical engraving devices
- Image contrast is created by removing the coloured coating and almost photographic qualities can be achieved (surface qualities are only guaranteed for the top side)
- Please note that the Standard Line is less robust due to the thinner anodised coating
- Typical applications are type plates, advertising signs and ID tags



Cut to size service



Premium Line

Aluminium Satin Silver

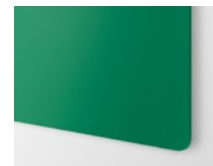
matt

0.5	30105-00
	<u>5277</u>
1.0	30110-00
	<u>3503</u>
1.5	30115-00
	<u>3544</u>
2.0	30120-00
	<u>4256</u>
3.0	30130-00
	<u>4806</u>



Black matt

0.5	30105-10
	<u>4671</u>
1.0	30110-10
	<u>3504</u>
1.5	30115-10
	<u>3545</u>
2.0	30120-10
	<u>4187</u>
3.0	30130-10
	<u>9075</u>



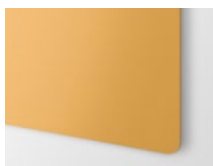
Green matt

0.5	30105-40
	<u>34356</u>
1.0	30110-40
	<u>3509</u>
1.5	30115-40
	<u>3548</u>
2.0	30120-40
	<u>4185</u>
3.0	30130-40
	<u>65331</u>

Nickel Silver

matt

0.5	30105-50
	<u>65308</u>
1.0	30110-50
	<u>3540</u>
1.5	30115-50
	<u>3549</u>
2.0	30120-50
	<u>65320</u>
3.0	30130-50
	<u>65326</u>



Gold matt

0.5	30105-60
	<u>65310</u>
1.0	30110-60
	<u>3541</u>
1.5	30115-60
	<u>3560</u>
2.0	30120-60
	<u>4184</u>
3.0	30130-60
	<u>15890</u>



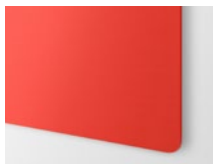
Blue matt

0.5	30105-30
	<u>4447</u>
1.0	30110-30
	<u>3508</u>
1.5	30115-30
	<u>3547</u>
2.0	30120-30
	<u>4186</u>
3.0	30130-30
	<u>65332</u>

Stainless Steel

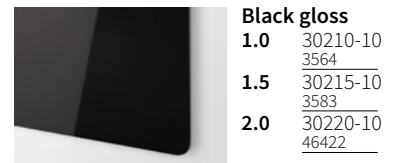
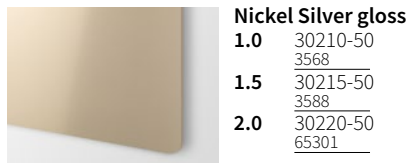
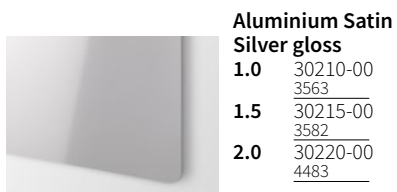
matt

1.0	30110-90
	<u>12659</u>
1.5	30115-90
	<u>4603</u>
2.0	30120-90
	<u>13667</u>



Red matt

0.5	30105-20
	<u>34357</u>
1.0	30110-20
	<u>3505</u>
1.5	30115-20
	<u>3546</u>
2.0	30120-20
	<u>4763</u>
3.0	30130-20
	<u>65333</u>



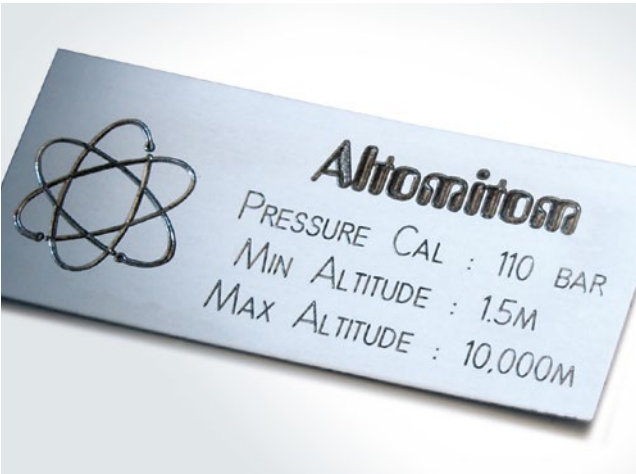
Standard Line



Please be aware, during the manufacturing process of a whole panel, two small spots are created at the edge where the material is not fully covered with an anodised layer.

This is necessary to achieve a high-quality surface finish and is not a material defect.

Trophy Aluminium



Material Features

Material: Anodised Aluminium
Finish: matt and bright
Thickness: 0.5mm, 0.6mm*
Cutting method: guillotine
Sheet Size: 1220 x 610 mm, 610 x 305 mm

*0.6mm thickness available in matt black only

- Anodised to 10 microns in a selection of bright or matt high quality finishes
- Can be marked with a diamond or a laser and easily cut with a guillotine
- Ideal to produce trophy and award plaques, serial number plates
- At only 0.5mm thick it can easily be wrapped around plinths and trophies



Cut to size service



Bright Silver
1220 x 610 mm

0.5 51350

610 x 305 mm

0.5 49884



Gloss Black
1220 x 610 mm

0.5 51355

610 x 305 mm

0.5 49913



Bright Gold
1220 x 610 mm

0.5 51349

610 x 305 mm

0.5 49881



Matt Black
1220 x 610 mm

0.6 51359

610 x 305 mm

0.6 49953

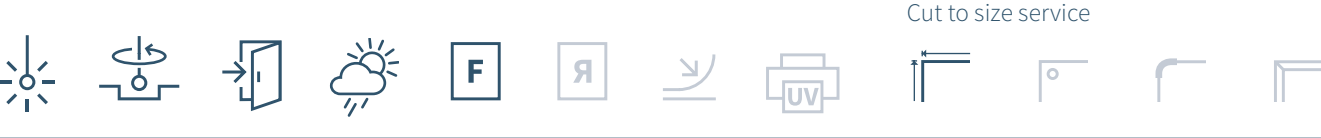
Stainless Steel



Material Features

Material: Grade 304 and 316 stainless steel (316 grade available on request)
Finish: bright or brushed
Cutting method: guillotine
Sheet size: 2000 x 1000 mm, 1000 x 1000mm and 1000 x 500 mm

- We stock premium quality type 304 stainless steel, available in bright polished and brushed finishes.
- It can be used to produce high quality and robust signs and labels for a range of applications.
- Type 316 (available on request) provides an extra level of corrosion resistance making it the ideal choice for coastal and heavily polluted areas.



Cut to size service



Brushed Stainless 500 x 1000 mm

0.9 50045

1.5 49979

1000 x 1000 mm

0.9 50097

1.5 50044

2000 x 1000 mm

0.9 50868

1.5 51284



Bright Stainless 500 x 1000 mm

0.9 50046

1.5 50095

1000 x 1000 mm

0.9 50098

1.5 500363

2000 x 1000 mm

0.9 51291

1.5 51290

Thickness	1000 x 500 mm
0,8 mm	30,50 €
1,0 mm	31,50 €
adhesive	+ 11,80 €

DuraBlack®



Material Features

Material: anodised aluminium

Finish: matt

Cutting method: saw, guillotine

Sheet size: 508 x 609 mm

- Coated aluminium with a black surface
- Can be marked with a CO₂ laser
- Particularly resistant to environmental influences (weathering, salt water, chemicals, etc.)
- Conforms with various industrial and military standards, including MIL-STD 130N, A-A-50271 (MIL-P-514D) and MIL-STD-15024F, Type L

Cut to size service



Black matt
0.5 77795

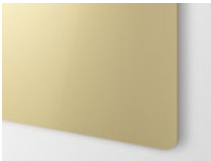
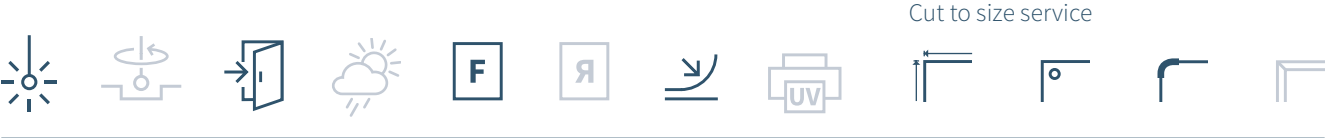
AlumaMark®



Material Features

Material: aluminium, alloy
Finish: satin, mirror
Cutting method: saw, guillotine
Sheet size: ⁽¹⁾ 508 x 609 mm
⁽²⁾ 305 x 508 mm

- Coated aluminium
- Can be marked in black with a CO₂ laser
- Even lower laser power levels can create a high-contrast engraving
- Typically used for interior signs, name plates, badges, trophy signs and labels



Satin Gold ⁽¹⁾
0.5 3948



Satin Silver ⁽¹⁾
0.5 3947



Mirror Gold ⁽²⁾
0.5 47639



Mirror Silver ⁽²⁾
0.5 47638

Engraving Brass



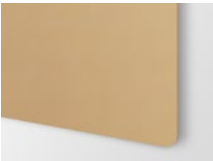
Material Features

Material: CZ120 hard temper, brass
Finish: Bright polished or mill finish
Cutting method: guillotine, saw
Sheet Size: 1000 x 600, 500 x 600

Cut to size service



Bright Polished 1000 x 600 mm	
1.0	49692
1.5	49875
2.0	49900
500 x 600 mm	
1.0	61324
1.5	49937
2.0	49964



Mill finish 1000 x 600 mm	
1.0	49795
1.5	50886
2.0	50887



Please note: Our CZ120 brass is not lacquered - it will require treating prior to the use of blacking fluid. Once lacquered, brass cannot be lasered.

Jewellers & Black Brass



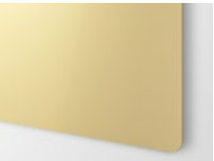
Material Features

Material: Tension-levelled and lacquered/enamelled
Finish: Bright and brushed
Cutting method: guillotine
Sheet Size: 610 x 305 mm

- Bright and brushed tension levelled and lacquered brass
- Can be engraved mechanically
- When used in conjunction with a brass blacking fluid a black contrasting mark will be created
- Ideal for trophy & awards, jewellery plates



Cut to size service



Bright Gold
0.5 52095



Grained Silver
0.5 52094



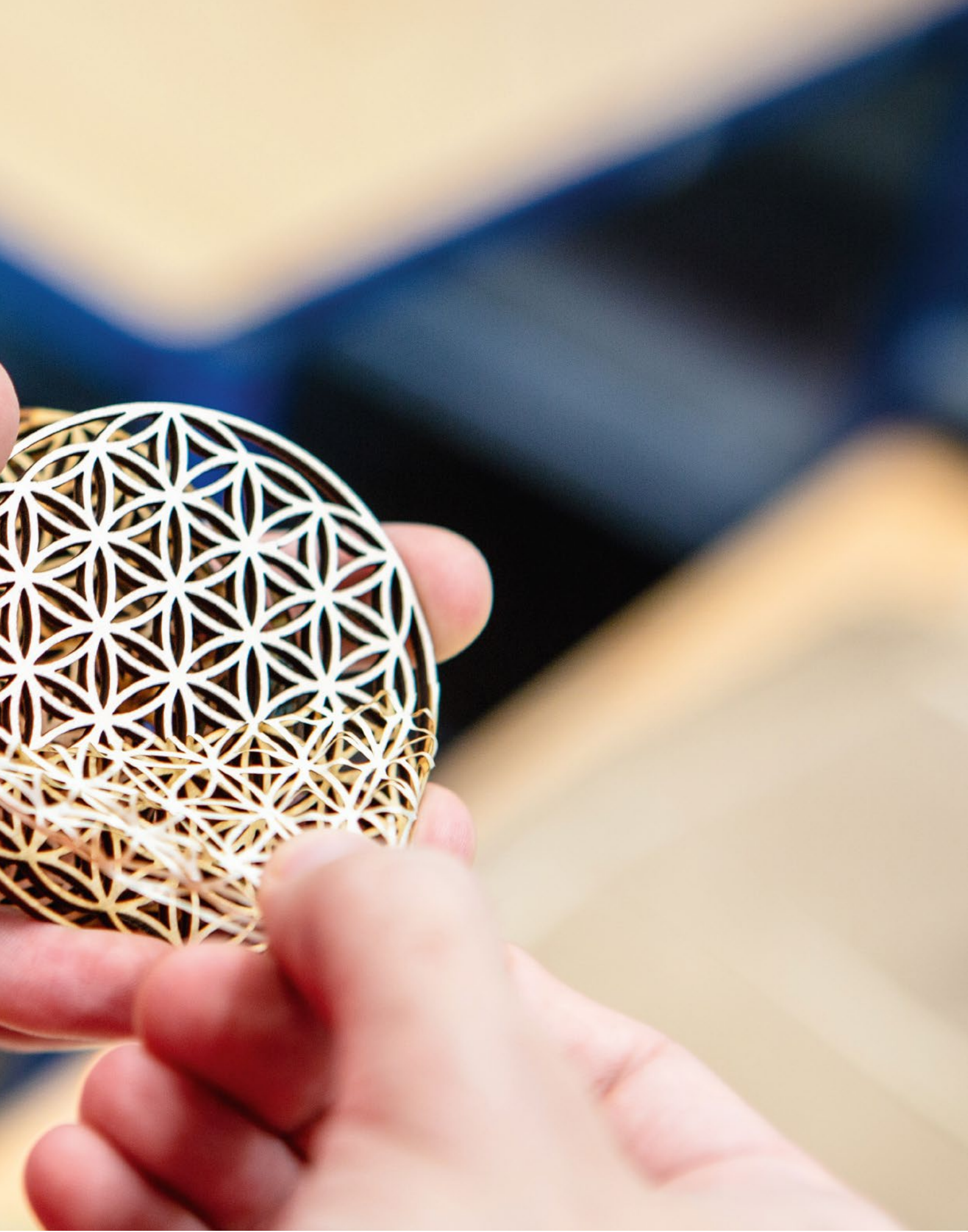
Black Enamelled
0.5 52093

Wood Series

Trotec wood products are selected for both laser and mechanical processing. Both the natural wood as well as the MDF and plywood alternatives allow for fine detail engraving and cutting with a laser. Create your outstanding signage with the natural characteristics of real wood. Trotec wood offers a high variation of finishes and results when laser engraving, depending on laser settings - deep engraving, dark black marking and light surface marking. Please note as wood is a natural product, processing results will vary. Please visit our webshop for more information, including tips and tricks for processing.



Here you can find the entire wood series in the Trotec webshop.
Scan QR Code now and order online.



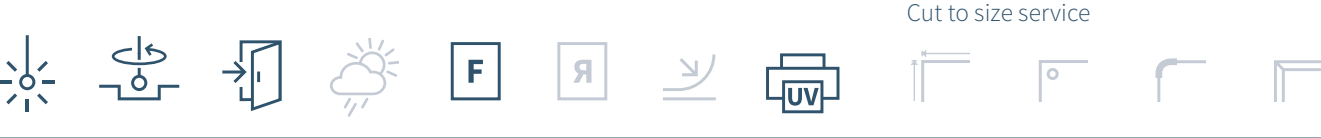
Solid Wood



Material Features

Material: solid wood
Finish: smooth, matt and lacquered
Cutting method: saw, laser
Sheet size: 600 x 300 mm

- Available in five luxurious finishes
- Ideally suited for the requirements of laser processing
- Smooth, matt oiled surface offers an authentic high quality appearance and durability
- Can be used for a multitude of applications such as small interior signage, interior decorations, fashion accessories and promotional giftware



Cut to size service



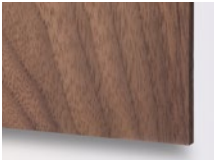
Maple
5.0 120182



Oak
5.0 120183



Cherry
5.0 120185



Walnut
5.0 120186



Alder
5.0 120184



Wood is a living, natural material and each panel is unique. Differences in structure and appearance within a panel can occur. We recommend to allow time for the wood acclimatise to its new environment before processing. Storage should be in an area with constant temperature/humidity.

Wood Veneer



Material Features

Material: veneered wood sheets
Finish: smooth, matt and lacquered surface
Cutting method: saw, laser
Sheet size: 600 x 300 mm

- Formaldehyde free fibre board core
- Real wood laminated on either side
- Elegant lacquered and matt surface
- Suitable for interior signs, gifts, architectural model making, arts and crafts



Cut to size service



Cherry
3.0 119801



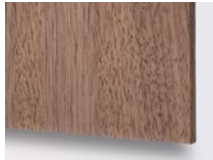
Maple
3.0 119798



Oak
3.0 154946



Bamboo
3.0 119799



Walnut
3.0 119952

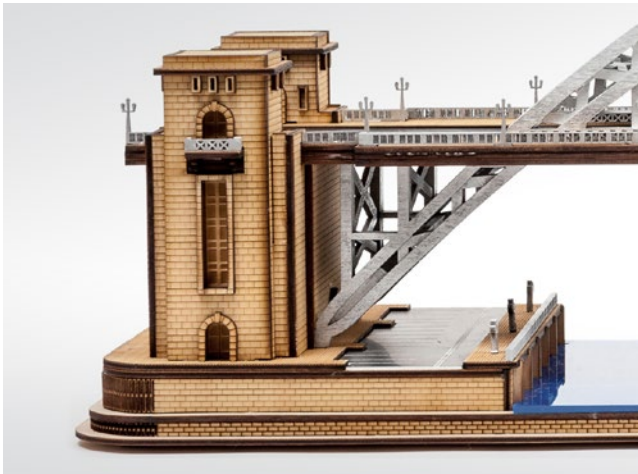


Birch
3.0 119800



Wood is a living, natural material and each panel is unique. Differences in structure and appearance within a panel can occur. We recommend to allow time for the wood acclimatise to its new environment before processing. Storage should be in an area with constant temperature/humidity.

Plywood



Material Features

Material: poplar plywood
Finish: untreated
Cutting method: laser, saw
Sheet size: 600 x 300 mm (pack of 10)

- Made from softwood
- Combines lightweight characteristics with improved dimensional stability
- Untreated, bright surface
- Ideal for architectural model making, prototyping, giftware, toys, arts and crafts, furniture



Cut to size service



600 x 300 mm
3.0 68987
6.0 68990



We recommend that you allow time for the wood to acclimatise to its new environment before processing. Ideally maintain in an area with constant temperature/humidity.

MDF



Material Features

Material: MDF
Finish: untreated
Cutting method: laser, saw
Sheet size: 1220 x 600 mm
600 x 300 mm (pack of 10)

- Smooth surface quality
- Furniture grade MDF
- Homogenous fibre structure
- Great results even in fine-detail laser cutting due to high fibre density
- Ideal for architectural model making, prototyping, giftware, toys, arts and crafts



Cut to size service



1220 x 600 mm
3.0 68995
6.0 120164



600 x 300 mm
3.0 68996
6.0 119957



Wood is a living, natural material and each panel is unique. Differences in structure and appearance within a panel can occur. We recommend to allow time for the wood acclimatise to its new environment before processing. Storage should be in an area with constant temperature/humidity.

TroCraft Eco



Material Features

Material: natural cellulose
Finish: untreated
Cutting method: saw, laser
Sheet size: 600 x 300 mm (pack of 5)

- Laser material made of recyclable resources
- Made of pure cellulose fiber
- Produced without using additives, is fully biodegradable and emission-free when processed
- Create sustainable toys, interiors or applications for furniture making, vehicle construction and tool making



Cut to size service



1.0	145324
1.5	145325
3.0	145326

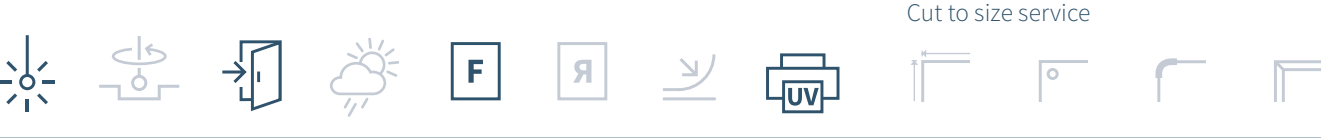
LaserCork



Material Features

Material: Cork
Finish: untreated
Cutting method: saw, laser
Sheet size: 600 x 300 mm (pack of 5)

- Natural, environmentally friendly laser material
- The fine grain structure and the beautiful dark brown engraving make LaserCork suitable for many different creative, decorative or functional applications with a natural touch
- Relatively low laser power is sufficient for cutting our LaserCork
- LaserCork is the perfect laser material for coasters and wall decorations such as a world map or pin board



Cut to size service



0.8	150638
1.5	150640
3.0	150641

LaserLeather



Material Features

Material: 100% PU leather
Finish: matte
Cutting method: saw, guillotine
Sheet size: 813 x 508 mm (pack of 5)

- High-quality two-tone artificial leather with a smooth surface for an excellent touch
- Stunning and unique pieces waiting to be turned into reality with this two-tone LaserLeather
- Specially selected colour combinations offer a wide range of use
- From bags, backpacks, labels, jewellery or a simple pencil case - it can be transformed into many unique items due to its easy processing



Cut to size service



Black/White gold
0.65 165274



Brown/Black
0.65 165276



Brown/Orange
0.65 165277



Black/Blue
0.65 165279



Berry/Red
0.65 165278



Silver/Red
0.65 165280

Paper

LaserPaper is a laser-friendly paper available in a variety of shades and gsm weights, which produces outstanding results when printed, laser cut and laser engraved. Trotec's LaserPaper has been carefully selected to produce a high level of colour contrast when laser engraved as well as a crisp, clean edge when laser cut. LaserPaper is incredibly versatile and can be used for a multitude of applications, such as invitations, brochures, business cards, greeting cards and more



Here you can find the entire LaserPaper series in the Trotec webshop.
Scan QR Code now and order online.



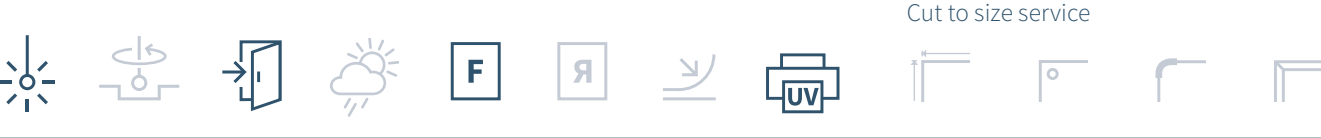
LaserPaper Colours



Material Features

Material: paper
Finish: matt
Sheet size: DIN A3 (297 x 420 mm)
Package quantity: 10 per pack

- Especially suitable for laser processing
- It is non-fading and easily folds and bends to create shapes
- Cutting this paper with a laser allows for filigree patterns and fine details to be created without any burned marks
- Typical applications are greeting or invitations cards, table decorations, book covers and promotional printing



	Metals Galvanised 300 GSM 132545		Cottage Red 300 GSM 132552		Black 380 GSM 132547
	Metals Gold Leaf 300 GSM 132546		Blue 250 GSM 132548		Slate Grey 300 GSM 132551
	Dark Blue 270 GSM 132544				

LaserPaper Wood



Material Features

Material: Real Birch or Cherry wood on paper backing
Finish: matt
Sheet size: DIN A3 (297 x 420 mm)
Package quantity: 10 per pack

- Features a real wood surface with a white cardboard backing
- Carefully designed to produce a high level of contrast when laser engraved, and a crisp clean edge when laser cut
- Combine print and laser cut for unique artwork
- Promotional printing, invitation cards and table decorations are typical applications

Cut to size service



**Birch
Wood Veneer**
310 GSM 132542

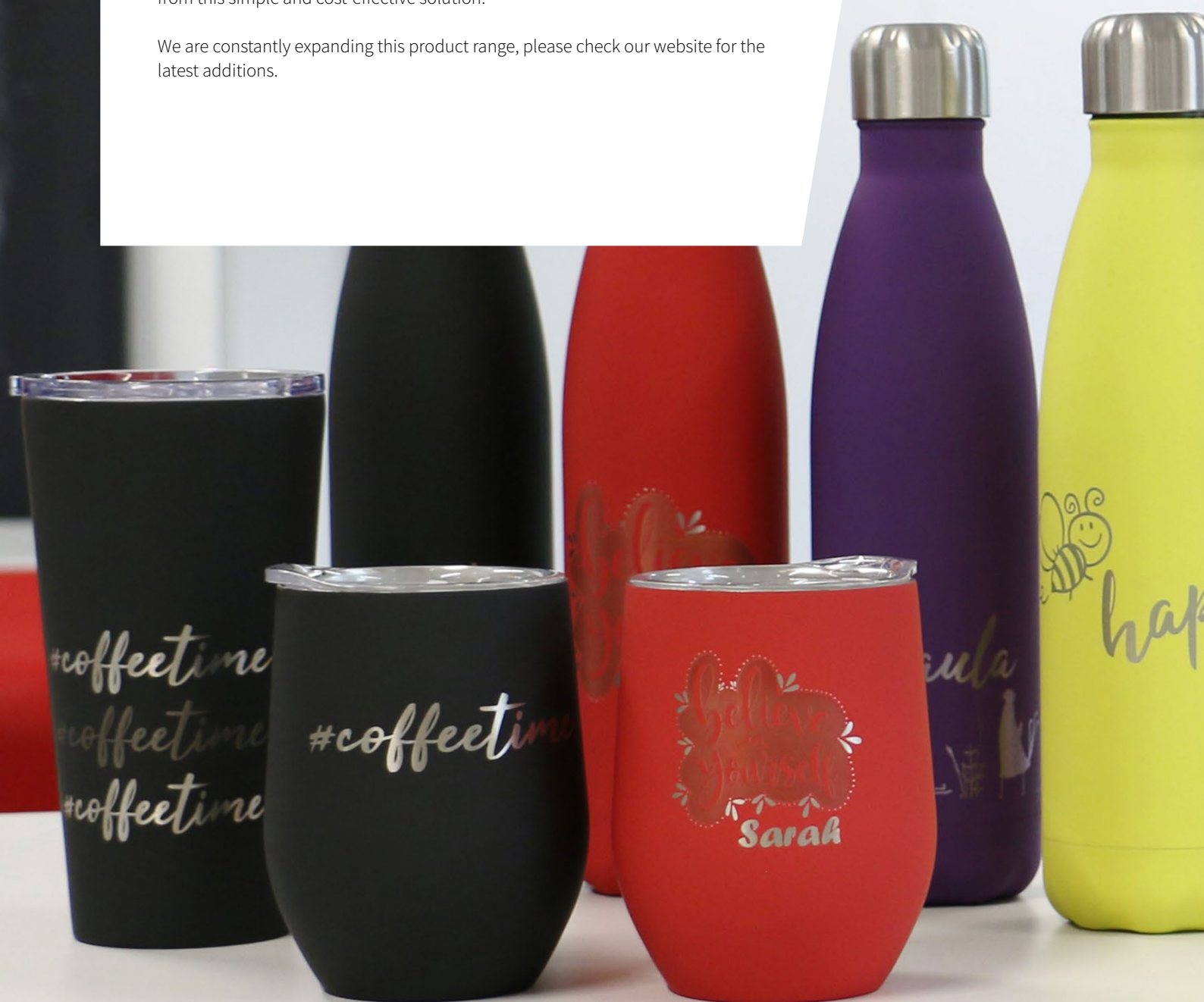


**Cherry
Wood Veneer**
310 GSM 132543

Gifts

Grow your business by personalising gifts and ready-made products for your customers. Apply unique laser engravings to these products and benefit from this simple and cost-effective solution.

We are constantly expanding this product range, please check our website for the latest additions.



Here you can find all gifts in the Trotec
webshop.
Scan QR Code now and order online.



Laserable Bottles



Material Features

Material: high-grade 304 stainless steel

Finish: matt, soft

Capacity: 500 ml

- Made of high-grade 304 stainless steel with a coloured coating that is perfect for laser engraving
- Double-walled vacuum insulation keeps ice cold drinks cool up to 24 hours, hot drinks keep their temperature up to 12 hours
- Whether skiing, at work or on the beach - you want these modern bottles with you at every moment
- Notes: The bottles are not recommended for dishwasher cleaning. Please check our webshop for latest colours.
- Please note products marked with * are not currently available.

Soft



Yellow
500 ml 163878



Green
500 ml 163879



Navy
500 ml 163880



Turquoise
500 ml 163881



Plum
500 ml 163902



Red
500 ml 163903



***Powder Pink**
500 ml 163904



Black
500 ml 163910

Matt



Orange
500 ml 150276



Blue
500 ml 150277



For optimal results, we recommend using a CO₂ laser for processing.

Magic Series – Mugs and Bottles



Material Features

Material: high-grade 304 stainless steel
Finish: glitter
Capacity: 360 ml. 500 ml

- These fancy bottles and mugs come with a colored glitter coating that can be easily laser engraved
- Creative and cost-effective personalization solution
- Thanks to the double-walled vacuum insulation and the closures, our glitter bottles are suitable for everyday use
- Notes: The bottles are not recommended for dishwasher cleaning. Please check our webshop for latest colors.

Laserable Mugs



Pink glitter
360 ml 163915



Gold glitter
360 ml 163916



Silver glitter
360 ml 163917



Mint glitter
360 ml 163918

Laserable Bottles



Pink glitter
500 ml 163908



Gold glitter
500 ml 163905



Silver glitter
500 ml 163906



Mint glitter
500 ml 163909



For optimal results, we recommend a CO2 laser.

Laserable Mugs & Tumblers



Material Features

Material: high-grade 304 stainless steel
Finish: soft
Capacity: 360 ml, 480 ml

- Whether for coffee, tea or a cold lemonade - these mugs and tumblers made of high-grade 304 stainless steel are the product of choice
- Equipped with a lid with lock
- Double-walled vacuum insulation keeps hot drinks their temperature up to 4 hours, ice cold drinks cool up to 8 hours
- Notes: not recommended for dishwasher cleaning. Please check our webshop for latest colors!

Mugs



Black
360 ml 163911



Turquoise
360 ml 163912



Red
360 ml 163913



Purple
360 ml 163914

Tumblers



Black
480 ml 163920



Pink
480 ml 163919



For optimal results, we recommend a CO2 laser.

Laserable Hip Flask



Material Features

Material: high-grade 304 stainless steel

Finish: matt

Capacity: 240 ml

- Made from high-grade 304 stainless steel
- Coloured coating that can be easily laser engraved with a CO2 laser
- The perfect gift for stag and hen parties, Father's Day and more
- Please note: not recommended for dishwasher cleaning.
- Check our webshop for the latest colours!



Black
240 ml 158407



Mint
240 ml 158409



Pink
240 ml 158408



***Silver**
240 ml 158405



*For a black laser engraving on blank stainless steel using a CO₂ laser we recommend the use of our marking solutions (e.g. markSolid spray/paste). Alternatively, a black marking can be created with a fiber laser

Aluminium Tags (Pet tags, ID tags)



Material Features

Material: anodised aluminium (except ID tag stainless steel)

Size: available in a wide range of sizes, shapes and colours

Package quantity: pack of 20 pieces

- Laser engraving creates a frosty white engraving
- Engraving with a mechanical engraving machine creates an elegant silver finish
- Create a personalised label
- Ideal as a gift, giveaway or a souvenir

Heart with hole



Small: 24 x 20 mm

Hole size approx. 3.0 mm

Large: 38 x 33 mm

Hole size approx. 3.0 mm

Colour	Order No. small	Order No. large
black	122244	122235
blue	122245	122237
red	122246	122238
gold	122248	122239
green	122249	122240
pink	122250	122241
violet	122251	122242
silver	122252	122243

Disc with loop



Diameter 25 mm

Hole size approx. 3.0 mm

Colour	Order No.
black	122172
blue	122173
red	122174
gold	122175
green	122176
pink	122177
violet	122178
silver	122179

Disc with hole



Small: Diameter 25 mm
Hole size approx. 3.0 mm
Large: diameter 30 mm
Hole size approx. 3.5 mm

Colour	Order No. small	Order No. large
black	122188	122180
blue	122189	122181
red	122190	122182
gold	122191	122183
green	122192	122184
pink	122193	122185
violet	122194	122186
silver	122195	122187

Dog bone



Small: 21 x 31 mm
Hole size approx. 2.5 mm
Large: 40 x 27 mm
Hole size approx. 3.5 mm

Colour	Order No. small	Order No. large
black	122205	122197
blue	122206	122198
red	122207	122199
gold	122208	122200
green	122209	122201
pink	122210	122202
violet	122211	122203
silver	122212	122204

ID tag



50 x 29 mm
Hole size approx. 3.0 mm

Colour	Order No.
black	122253
blue	122254
red	122255
gold	122256
green	122257
pink	122258
violet	122259
silver	122260
stainless steel blank	122261

Linen Books



Material Features

Material: linen-bound hardcover, high-quality cream-coloured white paper

Finish: matt

Sheet size: B5 (18.5 x 25.5 mm)

- Create personalised engravings on these high-quality linen books
- Suitable as a gift for special occasions such as weddings, birthdays, Mother's Day, Father's Day or christenings
- These linen books with 144 unprinted pages are also perfect as a guest book, baby book, recipe book or as a diary
- Manufactured in accordance with the best bookbinding traditions
- Note: Please check our webshop for latest colours!



Burgundy
B5 150644



Plum
B5 150643



Marine
B5 150645



Cream
B5 150646



Light blue
B5 150647

Supplies

Looking for engraving supplies to simplify and support your daily workflow?

Trotec's range of engraving supplies includes everything from workholding mats to pins and magnets for name badges to laser marking solutions (allowing you to use a CO2 laser for metal marking).

The range also includes the laser rubber used for our Trodat stamps, as well as acrylic paints for infilling reverse engraved areas.



Here you can find the entire TroGlass series
in the Trotec webshop.
Scan QR Code now and order online.



Signage Mounting Devices



Material Features

Material: solid stainless steel

Finish: matt

- Use these wall distance holders to mount high-quality signs
- Alternative sizes and fixing options offer a wide range of sign and mounting options
- Screw caps are the easy to use alternative to give a high-quality appearance to a regular screw
- Trotec materials can be ordered cut to size with drilled holes for easy mounting

Distance holder R15-15-FL and R20-20-FL

Stainless matt, round, flat head, left-hand thread



Product	Size	Package options	Order No.
R15-15-FL	ø 15 mm, wall distance 15 mm, sign hole 11 mm, Thickness of sign 2 – 5 mm	4 pieces, mounting screws	128994
R20-20-FL	ø 20mm, wall distance 20 mm, sign hole 13 mm, Thickness of sign 3 – 18 mm	4 pieces, mounting screws	128999

Distance holder S25-25-FK

Stainless matt, square, flat head, hex key fixing



Product	Size	Package options	Order No.
S25-25-FK	ø 25 mm, wall distance 25 mm, sign hole 16 mm, Thickness of sign 2 – 10 mm	4 pieces, mounting screws + hex key	128997

Distance holder E16-16-FK

Stainless matt, round, flat head, edge grip, x key fixing



Product	Size	Package options	Order No.
E16-16-FK	ø 16 mm, wall distance 16 mm, Thickness of sign 3 mm	4 pieces, mounting screws + hex key	128995

Distance holder R20-15-FK

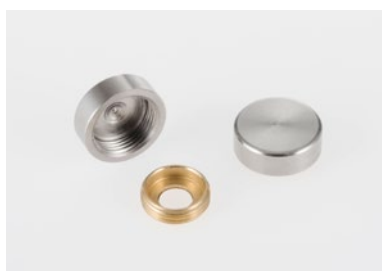
Stainless matt, round, flat head, hex key fixing



Product	Size	Package options	Order No.
R20-15-FK	ø 15 mm, wall distance 20 mm, sign hole 11 mm Thickness of sign 1 – 12 mm	4 pieces, mounting screws + hex key	128996

Screw caps

Stainless matt, round screw cap, left-hand thread



Product	Size	Package options	Order No.
R15/3.5-FL	ø 15 mm, screw size 3.5 mm	Pack of 20 pieces incl. screw-holder	129007
R18/4.5-FL	ø 18 mm, screw size 4.5 mm	+ cap	129008

Laser marking solutions



Material Features

Material: Pigments and particles embedded in a carrying liquid

Usage: When laser marked, the particles melt together with the surface of the core material (e.g. metal), leaving a permanent dark marking

Consumption: recommended within 6 months after delivery

- By applying the spray or paste on the blank surface (metal, glass, ceramic), CO₂ lasers, as well as fiber or Nd:YAG lasers, produce a permanent black marking
- This marking is highly resistant to mechanical and chemical stresses as well as high temperatures
- High contrast and resolution can easily be achieved
- Perfect for barcoding, product serialisation, logos or individual pieces

Laser marking metals

	Product	Size	Order No.
Aerosol	markSolid Spray Metal 14*	300 ml	57792
	CerMark LMM 6000	340 g	48392
	Thermark LMM 14	170 g	49854
Paste	markSolid Paste Metal 015	50 g	110200
	markSolid Paste Metal 015	200 g	84577
	markSolid Paste Metal 015	500 g	84578
	CerMark LMM 6000	250 g	48391
	CerMark LMM 6000	500 g	48390
	Thermark LMM 14	50 g	49850
	Thermark LMM 14	250 g	49849
Tape	CerMark LMM 6018 Tape	25 mm x 15 metres	48393
	CerMark LMM 6018 Tape	50 mm x 15 metres	39158

Laser marking ceramics

	Product	Size	Order No.
aerosol	CerMark Ultra Spray	340 g	175645

* Spray not recommended for airfreight

How to use laser marking solutions



1. Preparation

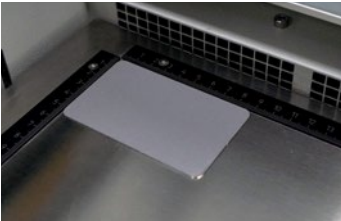
- **Surface Cleaning:** Product needs to be applied directly on the blank surface (metal, glass, ceramic). The surface has to be dry and clean, free from any type of lubricant or oil.
- **Spray:** Shake the spray well to make sure solid sediment is dissolved.
- **Pastes:** Dilute the paste with ethanol (alcohol) or water according to the label instructions. For curved surfaces reduce the dilution ratio.



2. Applying

Apply an even, thin coat. If the product is applied too thick it will require more power to make the mark.

- **Spray:** Hold the can from a 20 - 30 cm distance
- **Paste:** Apply with brush, foam or airbrush



3. Drying

It is important to allow the material to dry thoroughly before starting the laser marking process. It usually takes 1-2 minutes to air dry. This process can be sped up using a heat lamp, hair dryer or an oven.

Tip: You can reduce the drying time by putting the work piece in the laser with the exhaust turned on.



4. Laser Marking

The products can be used for marking with CO2 lasers, Nd:YAG lasers and fiber lasers, to name a few. Differences in laser power, wave length and other factors influence the final settings required. After laser marking, excessive coating can be removed by wiping with a damp cloth or by washing with water.



- Light-grey to brown results indicate that too much laser power or too little marking speed were used.
- If the marking can be rubbed off, too little power or too high laser speed can be the cause.
- The same result may occur if the coating is thicker than it should be, or if the material surface is not free of oil or dirt.

Our recommendations

Product	Application
Cermark LMM6000 Metal spray 340g	Black marking on bare metal. Our best seller is particularly effective on stainless steel. The Spray is the easiest method to apply an even coating, especially on large areas.
Cermark LM6000 Metal paste 50g, 250g, 500g	Black marking on bare metal. Once diluted the paste can be applied by brush (especially for small areas) or airbrush.

Colour Filling



Material Features

Material: highly versatile, water-based acrylic colours

Usage: all colours can be thinned with water to pale washes, or used directly from the pot or tube

- Specially designed to use on laser engraved plastics our acrylic filler paints will not affect nor “craze” the lasered area
- Fill reverse engraved signs with acrylic colours and create long-lasting, colourful, multi-colour signs
- Offer excellent light-fastness, permanence, durability and covering power
- Create colour effects with individually mixed colours



Acrylic paint

Code	Colour	Content
146419	Black	59 ml/pot
146420	Red	59 ml/pot
146421	White	59 ml/pot
146483	Blue	59 ml/pot
146484	Silver	59 ml/pot
146487	Gold	59 ml/pot
146485	Green	59 ml/pot
146486	Yellow	59 ml/pot
146489	Bright Pink	59 ml/pot

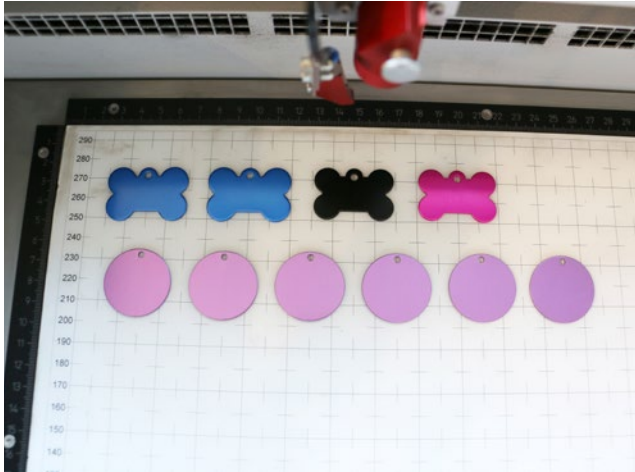
Cellulose paint

Code	Colour	Content
50453	Black	100 ml/tub
50449	White	100 ml/tub
50457	Red	100 ml/tub
50448	Orange	100 ml/tub
50451	Yellow	100 ml/tub

Blackening Fluid

Code	Colour	Content
50458	Aluminium Blackening Fluid	100 ml
50456	Brass Blackening Fluid	100 ml

Workholding Mat



Material Features

Material: thin plastic with a special coating on both sides

Size: various sheet sizes for different laser bed sizes

- Holds material flat on the table - no tape, clamps or additional adhesives are required
- Allows laser and rotary users without a vacuum table to hold down a workpiece and prevent it from moving while operating
- Also recommended for applications where the vacuum table cannot be fully utilized – for example when marking or engraving a high number of small pieces
- Material can be released easily again

Seklema Workholding Mat

Product (Cut to size)	Size
Seklema 67064	1200 x 600 x 3 mm
Seklema 67064 (1/2)	600 x 600 x 3 mm
Seklema 67064 (1/4)	600 x 300 x 3 mm

Trotec Workholding Mat

Product (Cut to size)	Size
Trotec 126983	1220 x 610 x 3 mm
Trotec 126983 (1/2)	610 x 610 x 3 mm
Trotec 126983 (1/4)	610 x 305 x 3 mm



A workholding mat is a reusable mat, that helps streamlining the production process:

- Holds material flat and in position if there is no a vacuum table
- Better fixation of small items which are hard to pin down by vacuum table
- Speeds up production
- Long lifetime due to “self-healing” surface and two usable sides
- Can be easily cleaned with only a soft sponge and water
- Various sheet sizes available to fit different laser bed sizes

Laser Rubber Sheets



Material Features

Material: Trodat stamp rubber

Sheet size: A4, A3

- Specially developed to deliver the best engraving results and the highest productivity
- Choose from our laser rubber range for various stamp applications
- Regardless of whether you want to save production time, or you want to reduce odours in your production area, Trodat is the right laser rubber for your needs
- Trodat's laser rubbers are completely harmless with regard to occupational health and safety



Product

AERO+. AERO

Fastest odourless laser rubber

- Low odour while engraving
- Very easy to clean
- 52° (Aero+). 60° (Aero) Shore-A

Size

Colour

Order Number

A4 / 2.3 mm	light grey (850211)	131011 (A4) Aero+
A4 / 5 mm	light grey (850211)	144249 (A4) Aero+
A3 / 2.3 mm	light grey (850211)	130975 (A3) Aero+
A4 / 2.3 mm	light grey (850208)	34192 (A4) Aero
A3 / 2.3 mm	light grey (850208)	36877 (A3) Aero

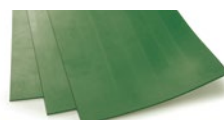


TEMPO

Speed laser rubber

- Up to 21% faster than standard laser rubber
- Excellent engraving and imprint quality
- 55° Shore-A

A4 / 2.3 mm	orange (850206)	34242
-------------	-----------------	-------

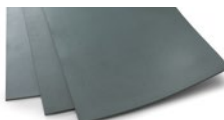


ECO

Ecological laser rubber from natural rubber

- Made from 100 % natural rubber
- 55° Shore-A
- water-based ink

A4 / 2.3 mm	green (850202)	34244
-------------	----------------	-------



CLASSICO

Reliable standard laser rubber

- Solvent-resistant
- 60° Shore-A

A4 / 2.3 mm	grey (850205)	34248
-------------	---------------	-------



OLIO

Oil-resistant laser rubber

- No expansion with oil-based inks
- 55° Shore-A

A4 / 2.3mm	black (850203)	34246
------------	----------------	-------

Nameplate Holders



Material Features

Available in Gold and Bright Silver our nameplate holders come in a variety of sizes and will enhance your engraved or printed signs. Our holders can be supplied with a TroPly nameplate. Whether you are looking for metallic finishes or vibrant colours they will be cut to fit the holder. For colour availability please refer to page 20.

*Please note that some sizes are only ordered on request. Please contact our sales team for lead times.



Attachable Plain

Code	Description
50764	1"x 8" Plain Gold
50773	1"x 8" Plain Silver
50738	1"x 36" Plain Gold
50756	1"x 36" Plain Silver
50744	1 1/2"x 8" Plain Silver with Holes
50747	1 1/2"x 10" Plain Gold with Holes
50767	1 1/2"x 10" Plain Silver with Holes
50741	1 1/2"x 36" Plain Gold
50737	1 1/2"x 36" Plain Silver
50760	2"x 8" Plain Gold with Holes
50758	2"x 8" Plain Silver with Holes
50754	2"x 10" Plain Gold with Holes
50774	2"x 10" Plain Silver with Holes
50763	2"x 36" Plain Gold
50779	2"x 36" Plain Silver



Attachable Ribbed

Code	Description
50745	1"x 8" Gold
50739	1"x 8" Silver
50749	1"x 36" Silver
50738	1"x 36" Gold
50740	1 1/2"x 9" Gold with Holes
50753	1 1/2"x 36" Gold
50736	1 1/2"x 36" Silver
50761	2"x 8" Gold with Holes
50780	2"x 8" Silver with Holes
50787	2"x 10" Gold with Holes
50743	2"x 10" Silver with Holes
50750	2"x 36" Gold
50775	2"x 36" Silver



Freestanding

Code	Description
50781	1 1/2"x 8" Gold
50786	1 1/2"x 8" Silver
50776	1 1/2"x 10" Gold
50770	1 1/2"x 10" Silver
50765	2"x 8" Gold
50785	2"x 8" Silver
50778	2"x 10" Gold
50788	2"x 10" Silver

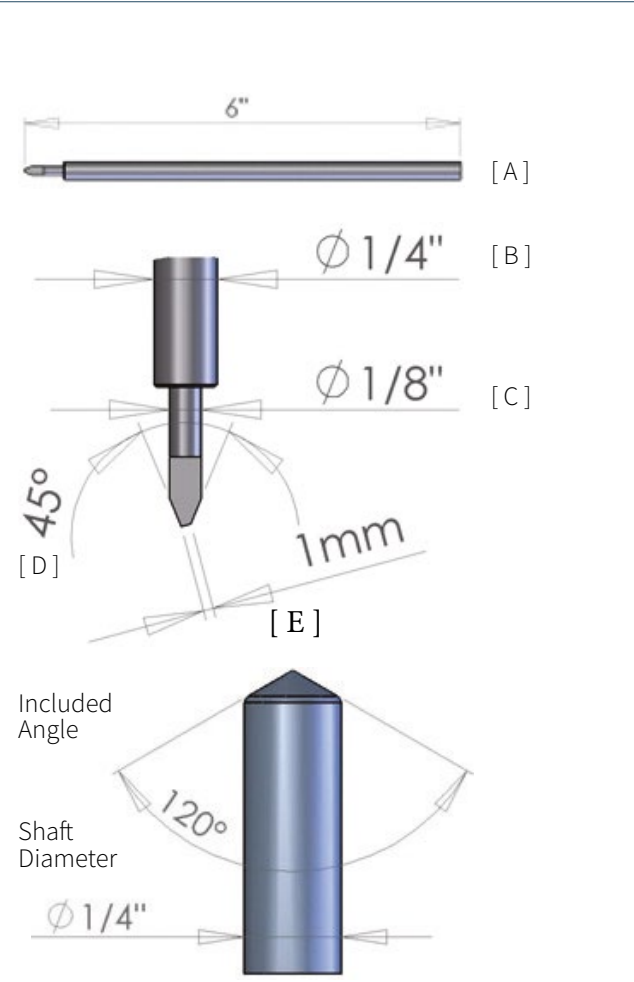
Carbide & Diamond Cutters



Tungsten Carbide Cutters: These cutters are recommended for engraving metals and plastics.

Conical Diamond Cutters: Conical diamonds are recommended for engraving and personalising metal products, gifts and awards.

Faceted Diamonds: If you need to produce high visibility lines on metals and for glass engraving, then faceted diamonds are recommended.



Ordering ground cutters

- A - Cutter Length:** The overall length of the cutter
- B - Shank Diameter:** Diameter of the cutter that passes through the spindle
- C - Tip Diameter:** Diameter of the cutter tip
- D - Included Angle:** The angle that the cutter will leave in the material
- E - Tip Size:** The size of the engraving / cutting tip

Tungsten Carbide Cutters – Straight Shank

Code	Description
51727	CRB 1/4" D x 2" L
51741	CRB 1/4" D x 5" x 1/8" Tip
51726	CRB 1/4" D x 6.5" L
51744	CRB 1/4" D x 6.5" L x 1/8" Tip
51733	CRB 1/4" D x 6.5" L x 3/16" Tip
51755	CRB 1/8" D x 1.5" L Full Shank
51732	CRB 1/8" D x 2" L
51743	CRB 1/8" D x 5" L
51742	CRB 11/64" D x 6.5" L
51731	CRB 11/64" D x 6.5" L x 1/8" Tip
51739	CRB 3mm D x 30 mm
51724	CRB 4mm D x 120 mm

Diamond Cutters

Code	Description
	Conical
51073	1/4" x 6.5" 120 degree
51070	11/64" x 6.5" 120 degree
	Faceted
51071	1/4" x 6.5" 120 degree
51074	11/64" x 6.5" 120 degree

Ordering Diamond Cutters

- Shank Length:** The overall length of the cutter
- Shank Diameter:** Diameter of the steel rod the diamond tip is attached to
- Type:** Faceted or Conical
- Angle:** The "included angle" of the diamond tip, usually 90°, 120° or 140°

Advertising materials



Material Features

Material: modified acrylic, cast acrylic, wood

Usage: advertising materials for your customers to support you with your business

- At Trotec, we strive to help our customers become more profitable and put customer needs at the centre of our core values
- We offer a sample binder and colour fans which you can present your customers, showing them the wide range of high-quality products available
- Order quality samples that your customers can touch and see in person

TroLase Series Colour fans



Product	Size	Order No.
Colour fan TroLase		92488
Colour fan TroLase Metallic		92489
Colour fan TroLase Thins	70 x 30 mm	92490
Colour fan TroLase Reverse		92491
Colour fan TroLase Metallic Plus		118063

TroGlass Colour chains



Product	Size	Order No.
Colour chain TroGlass Colour Gloss		117809
Colour chain TroGlass Satins		117810
Colour chain TroGlass Mirror	50 x 50 mm	146539
Colour chain TroGlitter		146140
Colour chain TroGlass Pastel		161079
Colour chain TroGlass Neon		162833

More Colour fans



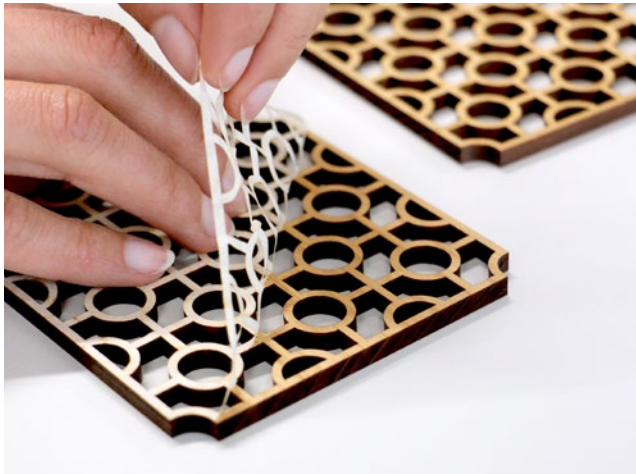
Product	Size	Order No.
Colour fan MDF Veneer	70 x 30 mm	120783
Colour fan Solid Wood	70 x 30 mm	120784
Colour fan LaserPaper	100 x 60 mm	139443
Colour fan LaserLeather	100 x 60 mm	166204

Sample Binder



Product	Size	Order No.
Sample Binder Laser (contains real materials of our TroLase and TroGlass Series, Metals and Wood)		99218
Sample Binder Full (contains all from Sample Binder Laser and additionally the TroPly Series)	250 x 210 mm	99235
Sample Binder without Metals (contains all from Sample Binder Full except all Metals)		147273

TroMask



Material Features

Material: paper-based, self-adhesive masking tape

Size: 610 mm x 100 m

- For beautiful cutting results and to avoid smudge marks
- Especially with wood, for example, you save a lot of time for cleaning the material after the laser process
- Adheres easily to surfaces
- Can be removed effortlessly and without leaving any residue or damaging the surface



Laser Masking Tape
610 mm x 100 m

153614



TroMask is a laser masking tape that:

- Offers excellent results especially in keeping the material around the cut or engraved areas clean
- Can be easily removed post laser processing
- Helps to reduce working time and saves costs

		Engraving		Use		Ply			Handling		
		Laser	Mechanical engraving	Exterior	Interior	1	2	3	Front	Reverse engraving (optional colour fill)	
Material											Scores
Laser + Rotary	TroLase	6	●	●	●	●	●	●	●		●
	TroLase Metallic	8	●	●		●	●		●		●
	TroLase Metallic Plus	9	●	●	●	●	●		●		●
	TroLase Reverse	10	●	●	●	●	●			●	●
	TroLase ADA Signage	11	●	●	●	●			●		●
	TroLase Thins	12	●	●		●	●		●		●
	TroLase Textures	14	●	●	●	●	●		●		●
	TroLase Lights	15	●	●		●	●		●		●
	TroLase Foil	16	●	●	●	●	●		●		●
	LaserFlex	17	●		●	●				●	
Rotary	TroPly	20		●	●		●		●		●
	TroPly Metallic Plus	21		●		●	●		●		●
	TroPly Ultra	22		●	●	●	●	●	●		●
	TroPly Ultra Reverse	24		●	●		●			●	●
	ABET Rigid	26		●		●		●	●		
	TroPly Satins	28		●		●	●		●		●
Acrylic	TroGlass Colour Gloss	32	●	●	●	●			●	○	
	TroGlass Satins	34	●	●	●	●			●	○	
	TroGlass Reverse	36	●	●	●	●			○	●	
	TroGlass Mirror	37	●	●		●			○	●	
	TroGlass Clear	38	●	●	●	●			●	●	
	TroGlass XT	39	●	●	●	●			●	●	
	TroGlitter	40	●	●		●			●	○	
	TroGlass Pastel	41	●	●	●	●			●	●	
	TroGlass Neon	42	●	●	●	●			●	●	
	Metal	Anodised Aluminium	44	●	●	●	●			●	
Trophy Aluminuim		48	●	●		●			●		
DuraBlack®		50	●		●	●			●		
AlumaMark®		51	●			●			●		
Stainless Steel		49	●	●	●	●			●		
Engraving Brass		52	●	●	●	●			●		
Jewellers Brass		53	●	●	●	●			●		
Wood	Solid Wood	52	●	●		●			●		
	Wood Veneer	53	●	●		●			●		
	Plywood	54	●	●		●			●		
	MDF	55	●	●		●			●		
	TroCraft Eco	56	●			●			●		
	LaserCork	58	●			●			●		
Paper	LaserLeather	59	●		●		●		●		

Finishing											Material
Saws	Drills	Guillotine	Laser Cutting	Bevels	Hot Bendable	Screen printing	Bonding	ADA Compliant	Hot Stamping		
●	●	●	●	●	●	●	●		●	6	TroLase
●	●	●	●	●	●	●	●		●	8	TroLase Metallic
●	●	●	●	●	●	●	●		●	9	TroLase Metallic Plus
●	●	●	●	●	●	●	●		●	10	TroLase Reverse
●	●	●	●	●	●	●	●	●	●	11	TroLase ADA Signage
●	●	●	●			●	●		●	12	TroLase Thins
●	●	●	●	●	●	●	●		●	14	TroLase Textures
		●	●				●		●	15	TroLase Lights
●	●	●	●			●	●		●	16	TroLase Foil
		●	●							17	LaserFlex
●	●	●		●	●	●	●		●	20	TroPly
●	●	●		●	●	●	●		●	21	TroPly Metallic Plus
●	●	●	●	●	●	●	●		●	22	TroPly Ultra
●	●	●	●	●	●	●	●		●	24	TroPly Ultra Reverse
●	●			●						26	ABET Rigid
●	●	●		●	●	●	●		●	28	TroPly Satins
●	●		●	●	●	●	●		●	32	TroGlass Colour Gloss
●	●		●	●	●	●	●		●	34	TroGlass Satins
●	●		●	●	●	●	●		●	36	TroGlass Reverse
●	●		●	●		●	●			37	TroGlass Mirror
●	●		●	●	●	●	●		●	38	TroGlass Clear
●	●		●	●	●	●	●		●	39	TroGlass XT
●	●		●	●	●	●	●		●	40	TroGlitter
●	●		●	●	●	●	●		●	41	TroGlass Pastel
●	●		●	●	●	●	●		●	42	TroGlass Neon
●	●	●		●		●	●			46	Anodised Aluminium
	●	●								48	Trophy Aluminium
●	●	●		●						50	DuraBlack®
●	●	●		●						51	AlumaMark®
●	●	●		●		●	●			49	Stainless Steel
●	●	●								52	Engraving Brass
●	●	●								53	Jewellers Brass
●	●		●	●		●	●			52	Solid Wood
●	●		●	●		●	●			53	Wood Veneer
●	●		●	●		●	●			54	Plywood
●	●		●	●		●	●			55	MDF
●	●		●	●		●	●			56	TroCraft Eco
●			●			●	●			58	LaserCork
		●	●			●	●			59	LaserLeather

Laser + Rotary

Rotary

Acrylic

Metal

Wood

Leather

Paper

Speedy Laser Engraver

Profitability by Design



The Speedy laser engraving and cutting systems are the perfect choice both for entry level users as well as professional engravers. Speedy machines are the fastest and most productive lasers on the market, with a maximum processing speed of 3.55m/sec and acceleration of 5g, the Speedy series is designed to increase your production efficiency. Thanks to the closed construction, essential components are protected from dirt and dust.

This is why you can operate with virtually no maintenance or cleaning requirements, resulting in increased up-time and a low cost of ownership. All platform sizes from 610 x 305 mm up to 1016 x 610 mm are available with a CO₂, a fiber or both laser sources in one laser system (flexx). The patented flexx function enables endless application possibilities. Use both laser sources in one job without having to change the laser source, the lenses or the focus manually. Customise honorary prizes such as awards or trophies, personalise promotional items or explore new opportunities to expand your business:



Personalize gifts like bottles or mugs



Finest details on leather items



Engrave signs with Trotec materials

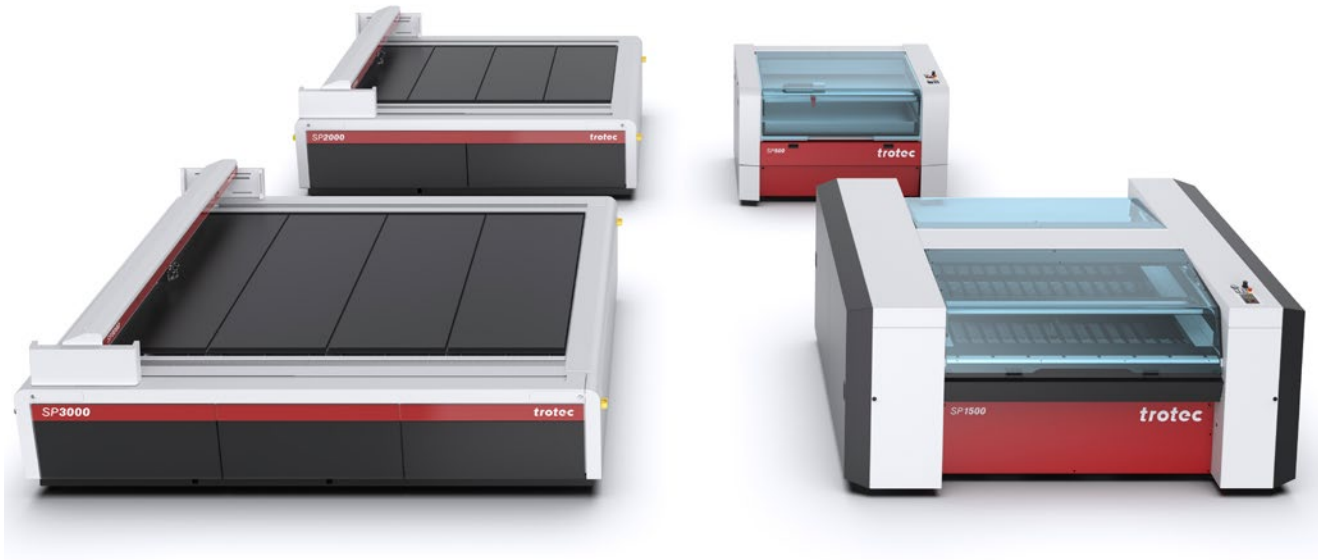
Expand your business

Speedy laser machines are the perfect tool for a variety of materials. Virtually any design can be created with the laser. Stamps can be produced within minutes and series production is also significantly streamlined.

Customise honorary prizes such as awards or trophies, personalise promotional items or explore new opportunities to expand your business.

SP Series

Leading Large Format Laser Cutting



The SP Series is the perfect choice for large format CO₂ laser cutting systems. The highly efficient flatbed laser plotters are ideal for demanding large format cutting applications in plastics, wood, textiles and many more. The highest laser cutting speed, four-sides access and Tandem Assist ensure maximum productivity. For the SP series laser cutters Trotec has developed a unique, multifunctional table concept.

The ideal table for every application can be selected and replaced quickly and easily. The working areas of SP laser cutters provide enough space for all standard sheet sizes in use today – from 1245 x 710 mm on the SP500 up to 2210 x 3.210 mm of the SP3000. Acrylics, textile, paper, cardboard or wooden sheets can be processed efficiently and cost-effectively. The SP Series is 100% developed and manufactured in Austria.



Print & cut signs of all geometries



Flame-polished edges - Cut up to 40mm acrylic.



Laser cutting MDF furniture.
Turn designs into reality within seconds.

Make your production more efficient

Create laser cut displays or POP signage using acrylics with glass-clear cut edges, no post-processing required. Save up to 88% of acrylic processing costs. Use the laser for contour cutting high quality printed materials including acrylics, cardboard or wood.

From intricate paper products, logos or images, the results inspire with incredible detail, precision and quality. Offer new products and services and achieve more profit!

SpeedMarker Laser marking machines

Created for Automation



SpeedMarker laser systems offer enormous productivity, supporting the automation processes and inspiring with simple handling in data preparation and daily work. The laser processing cells also offer maximum flexibility in terms of size and number of components.

Particularly with SpeedMarker 1300, SpeedMarker 1350 and SpeedMarker 1600, individual large or heavy components can be handled just as easily as a large number of small components in trays. Complex marking sequences are efficiently created with the SpeedMark® software thanks to visual programming and predefined program modules. Choose the SpeedMarker series for automated and precise marking of various plastics and metals.



Industrial tags for machines and parts



Code marking in hard to reach areas



Durable marks to last the products lifetime

Durable. Economical. Flexible

The use of SpeedMarker marking lasers supports automation processes. Due to the simple laser marking of dynamic data and infinite possibilities in AdvancedScripting®, the SpeedMarker series is the right choice for machine manufacturing, electronic industry and job shoppers.

Individual components as well as large batch sizes are marked with a Galvo laser class 2 system for complete traceability, brand communication or with functional markings.

Price list

Contact us for more information and our price list!

Trotec Laser UK
9 Didcot Way,
Boldon Business Park,
Tyne and Wear, NE35 9PD
Tel. +44 (0)191 580 1182
materials@troteclaser.co.uk

Contact us:
Trotec Laser UK
9 Didcot Way,
Boldon Business Park,
Tyne and Wear, NE35 9PD
Tel. +44 (0)191 580 1182
materials@troteclaser.co.uk

trotec



www.engraving-supplies.co.uk