



ARCHITEXTURAL™

Surface. Designed.

ARCHITEXTURAL™



REFURB WITH FILM

Introducing Architextural, suppliers of all architectural and building related films. Transforming décor both inside and out.

See

Replica finishes that are hard to distinguish from the real material.

Touch

Textures that enhance, uplift and transform interiors.

Feel

Create amazing spaces and high quality customer experiences at a fraction of the cost.

Architextural is part of William Smith group 1832, the leading trade supplier of vinyl films and trade sign manufacturing. Servicing the sign, graphics and interiors industries for over 100 years.

Surface. Designed.



STANDARD
RE-FITS COST 7
TIMES MORE



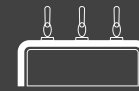
NO LOSS OF
REVENUE



INCREASE
REVENUE FOR
PREMIUM ROOMS



QUICK INSTALL
WITH NO BUILDING
WORK



NOT JUST FOR
FLAT SURFACES



1500 REALISTIC TEXTURES
AND PATTERNS



TRANSFORM
ONE ITEM OR
TRANSFORM MANY



A SUSTAINABLE
SOLUTION



FIRE TESTED, MOISTURE
AND HEAT RESISTANT



3M DI-NOC ARCHITECTURAL FINISHES

3M DI-NOC architectural finishes are a self-adhesive surface option for covering existing surfaces within bars, hotels, restaurants, retail and many more commercial spaces.

The application options are so diverse as the product can be applied onto any surface to change the look and feel, making it perfect for any refurb projects as an alternative budget option for your projects. As the film is applied in situ, there is no downtime, no noise, mess or waste, taking away all the hassles of traditional refurbishments.

There are over 1000 patterns, textures and effects available that look and feel like real life wood grains, fabrics, metallic and stone finishes. These are all perfect for the interior fit out environment, because they are so versatile and can be used to wrap any surface virtually anywhere! Films can be applied to surfaces such as displays, bars, counters, tables, doors, lifts and even within washroom environments! The films are also extremely durable and widely used already.

Interior designs can be transformed on a budget, as a sustainable solution – with no need to rip out and replace fixtures and fittings and send to landfill. Simply recover substrates with film to transform any commercial space.

ARCHITEXTURAL 3M DI-NOC TREND LINE

Our exclusive Trend Line incorporates the most on-trend patterns and finishes, all in stock and available by the metre to meet demand including new matt finishes with fingerprint resistance, concrete and stone effects, fabric and leather, dry wood and metallic.

3M DI-NOC EXTENDED RANGE

The full 1000+ pattern range of 3M DI-NOC also includes even more patterns and effects for your projects including wood grain, metallics, single colours, high gloss, stone and many more.

Specialist finishes include DI-NOC Exterior range for use on building facades and exterior surfaces with additional UV resistance, or the AR Abrasion Resistant range, which offers increased durability for high traffic applications where more impact resistance is needed. View the entire range online at www.architextural.co.uk.





DW-1877 MT !



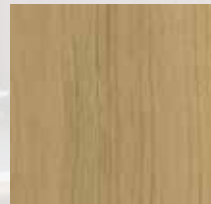
DW-1882 MT !



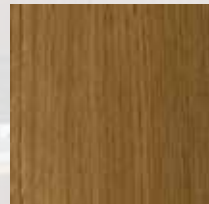
DW-1884 MT !



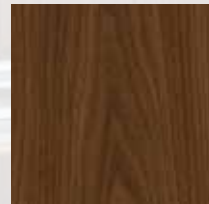
DW-1885 MT !



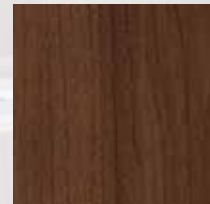
DW-1889 MT !



DW-1890 MT !



FW-1021 ☀



FW-1022 ☀

WOOD

3M DI-NOC



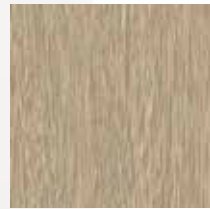
FW-1122



FW-1127



FW-1135



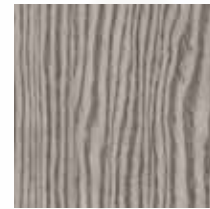
FW-1756



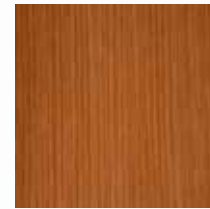
FW-1757



FW-1768



FW-1971



FW-236



FW-327



FW-330



FW-337



FW-650



FW-651



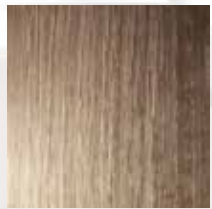
FW-7001



FW-788



FW-888



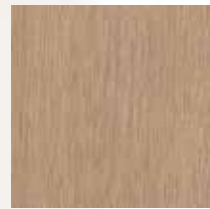
WG-1141



WG-1144



WG-156



WG-166



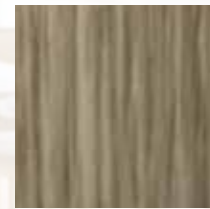
WG-243



WG-478



WG-664



WG-696



WG-832



WG-943



WG-947

Suitable for external applications

Not recommended for use on compound curves

Suitable for external applications but not recommended for application to PVC coated materials

Not recommended for butt joint applications

Horizontal grain direction

Available in both horizontal and vertical grain pattern options



AE-1719



AM-1697 !



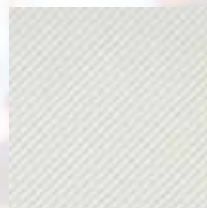
AM-1699 !



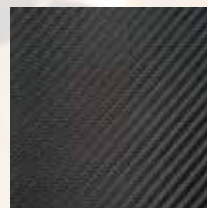
AM-1702 !



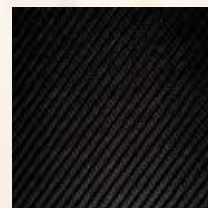
AM-1721 !



CA-419



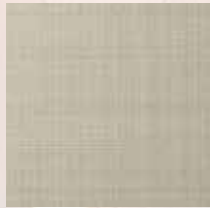
CA-420 ⚙️



CA-421 ⚙️

METALLIC

3M DI-NOC



CH-2116



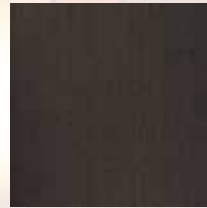
ET-1772



ET-1775



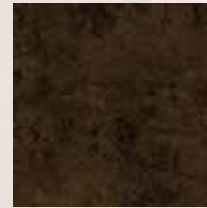
ME-1223



ME-1434



ME-1435



ME-2020



ME-2022



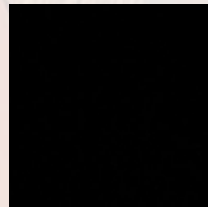
ME-2023



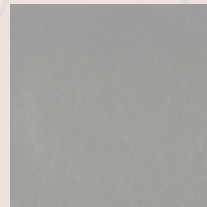
ME-2024



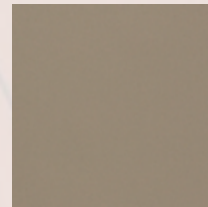
ME-377



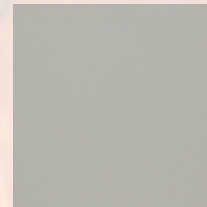
ME-379



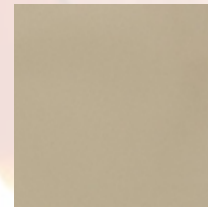
ME-904



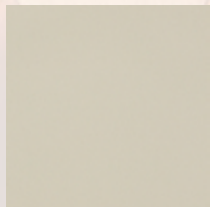
PA-039



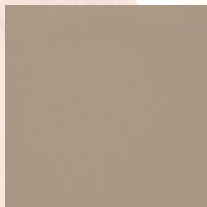
PA-045



PA-046



PA-180



PA-183



PA-683



RT-1112



VM-1691



VM-1692



VM-1693



VM-2121



VM-305



VM-306

Suitable for external applications

Not recommended for use on compound curves

Suitable for external applications but not recommended for application to PVC coated materials

Not recommended for butt joint applications

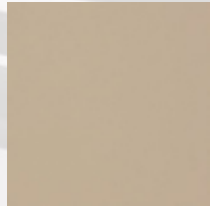
Horizontal grain direction

Available in both horizontal and vertical grain pattern options

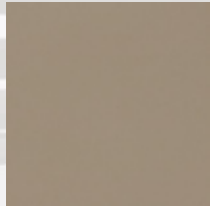
A modern interior space featuring a curved wall with a wood-grain texture. The wall is composed of multiple layers of curved panels, creating a tunnel-like effect. In the foreground, there is a white table with a laptop and a glass. Two white chairs are positioned around the table. The ceiling has recessed lighting. The overall atmosphere is clean and contemporary.

SOLID COLOUR

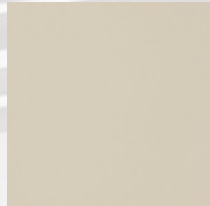
3M DI-NOC



PS-022



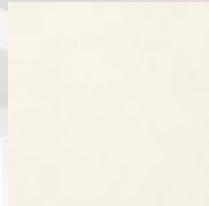
PS-034



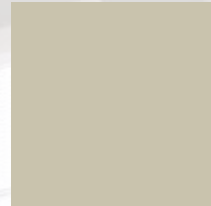
PS-091



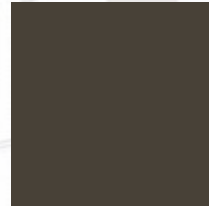
PS-140



PS-1187



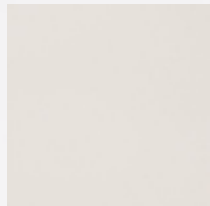
PS-1866 MT



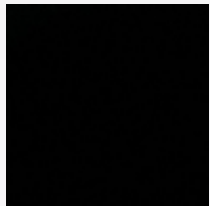
PS-1869 MT



PS-1870 MT



PS-503



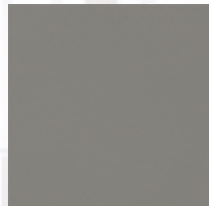
PS-504



PS-910



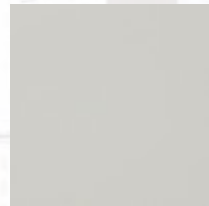
PS-949



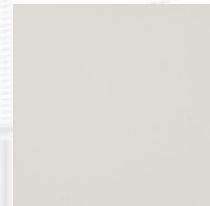
PS-950



PS-952



PS-954



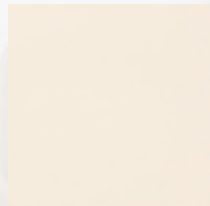
PS-955



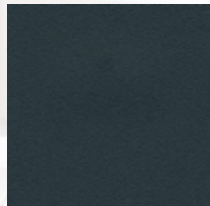
PS-959



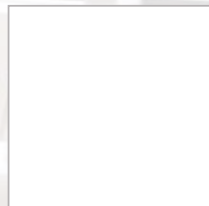
PS-971



PS-983



PS-992



PWF-500



WH-111

Suitable for external applications

Not recommended for use on compound curves

Suitable for external applications but not recommended for application to PVC coated materials

Not recommended for butt joint applications

Horizontal grain direction

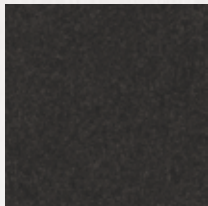
Available in both horizontal and vertical grain pattern options

TEXTILE

3M DI-NOC



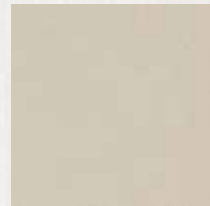
FE-1732



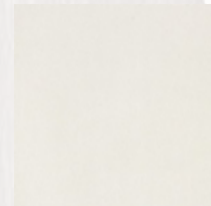
FE-1967



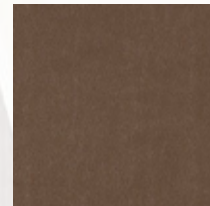
FE-805 !



FE-813 !



LE-1105



LE-1109 ⚙



NU-1786 !



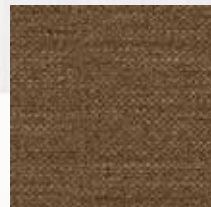
NU-1787 !



NU-1788 !



NU-1935 MT !



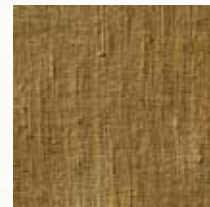
NU-1936 MT !



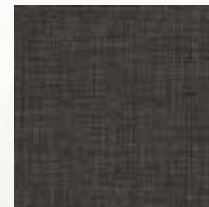
NU-1937 MT !




NU-2001





NU-2005

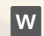


NU-2009


 Suitable for external applications

 Not recommended for use on compound curves

 Suitable for external applications but not recommended for application to PVC coated materials

 Not recommended for butt joint applications

 Horizontal grain direction

 Available in both horizontal and vertical grain pattern options

STONE

3M DI-NOC



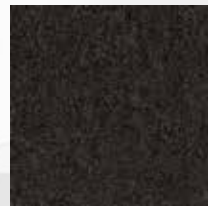
AE-1928 MT !



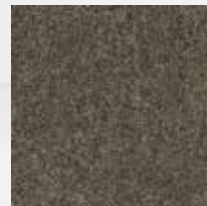
AE-1944 MT !



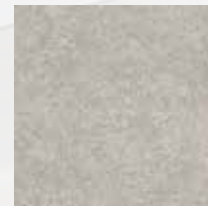
AE-1952



AE-1956



AE-1960 MT !



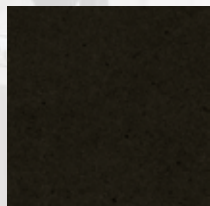
CN-1621



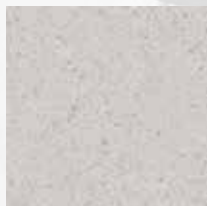
ST-1912 MT !



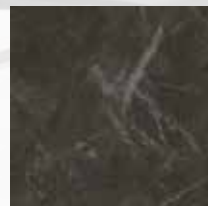
ST-1914 MT !




ST-1916 MT !




ST-1918 MT !





ST-1920 MT !


 Suitable for external applications

 Not recommended for use on compound curves

 Suitable for external applications but not recommended for application to PVC coated materials

 Not recommended for butt joint applications

 Horizontal grain direction

 Available in both horizontal and vertical grain pattern options

“
APPLY IN SITU,
WITH NO
NOISE, MESS
OR WASTE
FOR MINIMAL
DISRUPTION
DURING
APPLICATION
”





EXAMPLES OF REFURBISHMENT VERSUS NEW PROJECT COST:

Hotel Lift

- Refurbishment = £1,300, new £5,200
- 75% saving

Hotel Bar

- Refurbishment = £2,800, new = £18,000
- 85% saving

Office Reception

- Refurbishment = £3,300, new = £19,000
- 83% saving

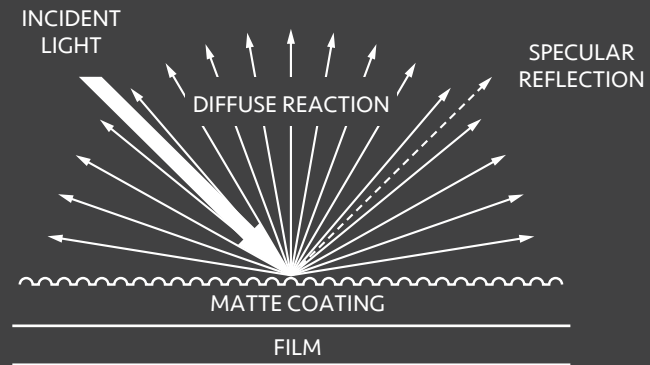
Bar Area

- Refurbishment = £15,800, new = £120,000
- 87% saving



3M DI-NOC MATT SERIES

3M's new inspiring finishes include a selection of ultra matt films, featuring a unique top coat that has been developed to provide fingerprint and dirt resistance. The coating on the film also enables an even smoother finish and texture to the surface, due to the specular reflection. The matt finishes are available exclusively from 3M on a wide selection of woods, stone, textile and single colour patterns to create unrivalled interior designs with film.







COVER STYL' SMART INTERIOR DESIGN

Cover Styl' is a self-adhesive vinyl designed to realistically recreate the look of natural, more expensive materials, appropriate for interior decoration or refurbishment projects.

New life can be brought into furniture and interior surfaces with Cover Styl', as the self-adhesive vinyl offers endless refurbishment opportunities for walls, facades, doors, columns, bars, offices, restaurants, lobbies, bathrooms, hospitals, banks and conference rooms.

COVER STYL'



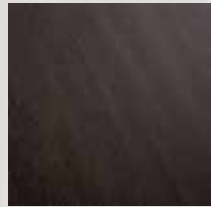
THE RANGE

The Cover Styl' range incorporates hundreds of patterns, including wood, metallic, solid colours, glitter, stone, marble, and leather. We stock 180+ patterns locally, available to be ordered by the metre, providing your projects quickly and easily.

Application of Cover Styl' self-adhesive products can be applied in situ, meaning modifications to surface designs in intricate environments can be done with minimal disruption.

Key Benefits

- Recreates the look of natural materials
- More cost effective than a classic refurbishment
- Easy, effortless and ultra-fast installation process
- 10 year guarantee against changes in appearance
- Heat-stretchable by up to 220%, facilitating a perfect application on any furniture contour



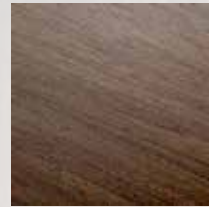
A1



A2



AA12



AA14



AA15



AB05



AF08



AG04



AG14



AG20



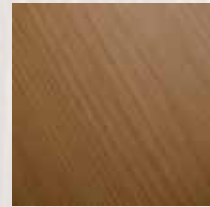
AL14



AL34



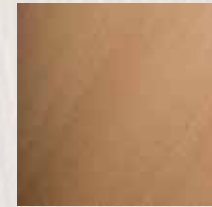
AZ07



B1



B3



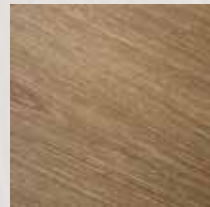
B4



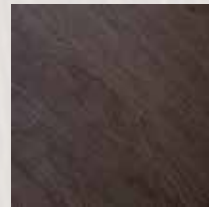
B5



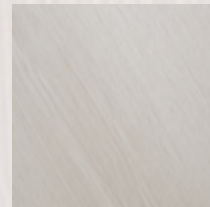
B6



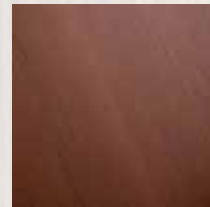
B8



B9



B50



C2



CT17



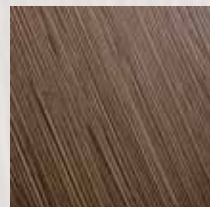
CT35



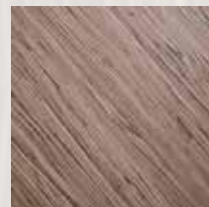
CT69



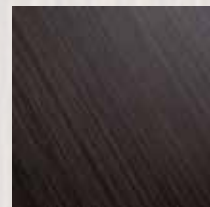
D1



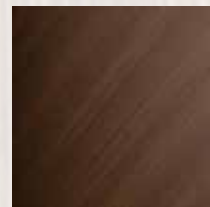
D3



D4



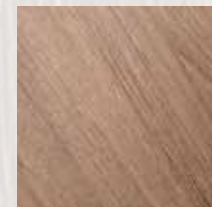
E1



E4



F4



F5

WOOD

COVER STYL'



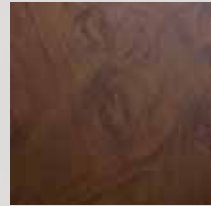
F6



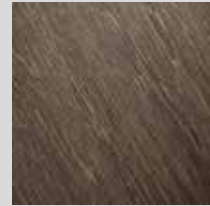
F7



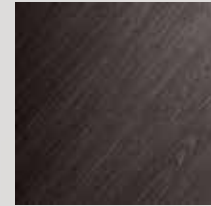
G0



G3



G4



G5



G6



G7



H4



H5



H6



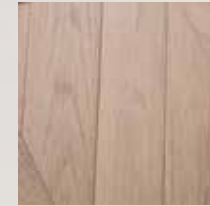
H7



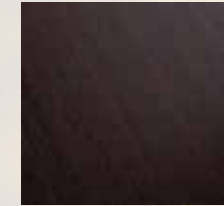
H8



H10



H50



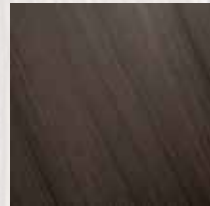
I6



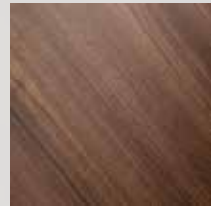
I7



I9



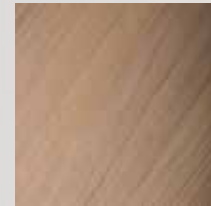
I10



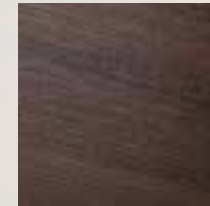
I11



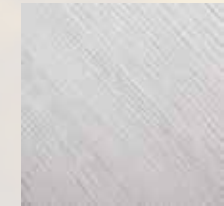
I13



I14



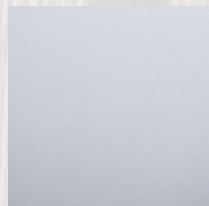
I15



I16



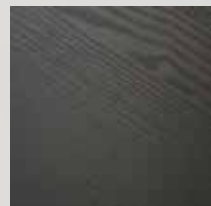
J2



J14



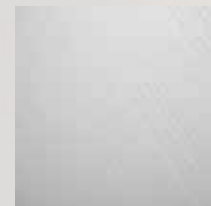
J17



J18



NE13



NE46



NE61



NE63



NE68



T50

FABRIC

COVER STYL'



AL09



MK02



MK18



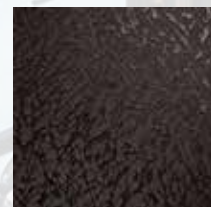
NE20



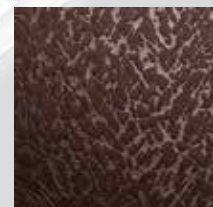
NE33



NE37



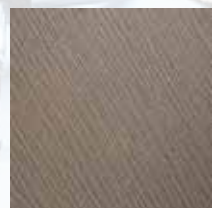
T7



T8



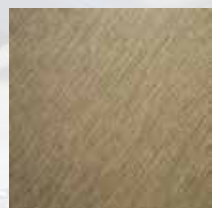
T9



T10



T12



T51



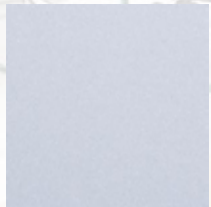
U12



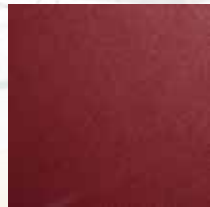
W2

GLITTER

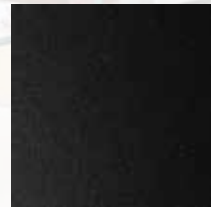
COVER STYLE



J7



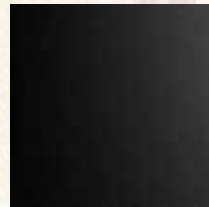
J8



J9



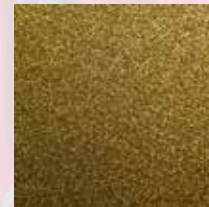
J15



J16



R5



R6



R7



R8



R9



R10



R11



R12



R13

LEATHER



NE40



NE42



NE43



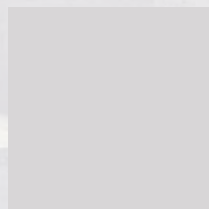
V1



V4



V7



V8



X2



X3



X5



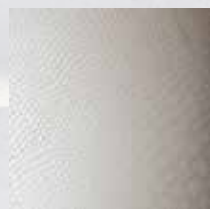
X6



X7



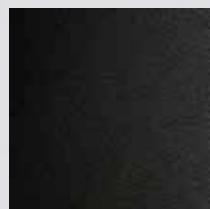
X10



X11

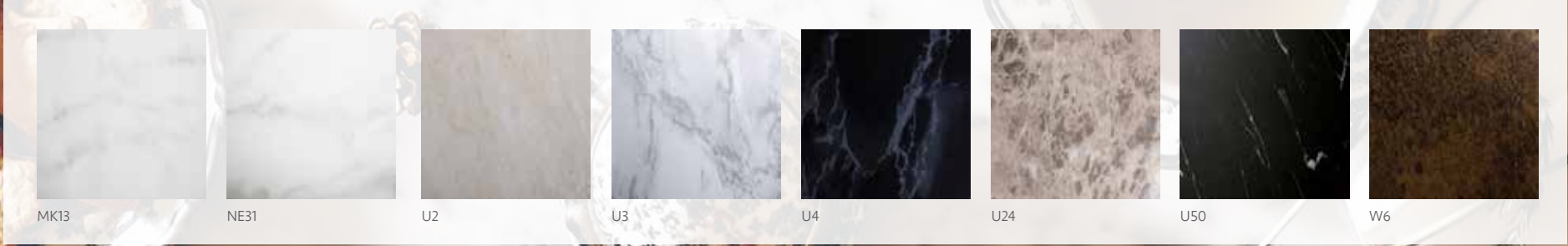
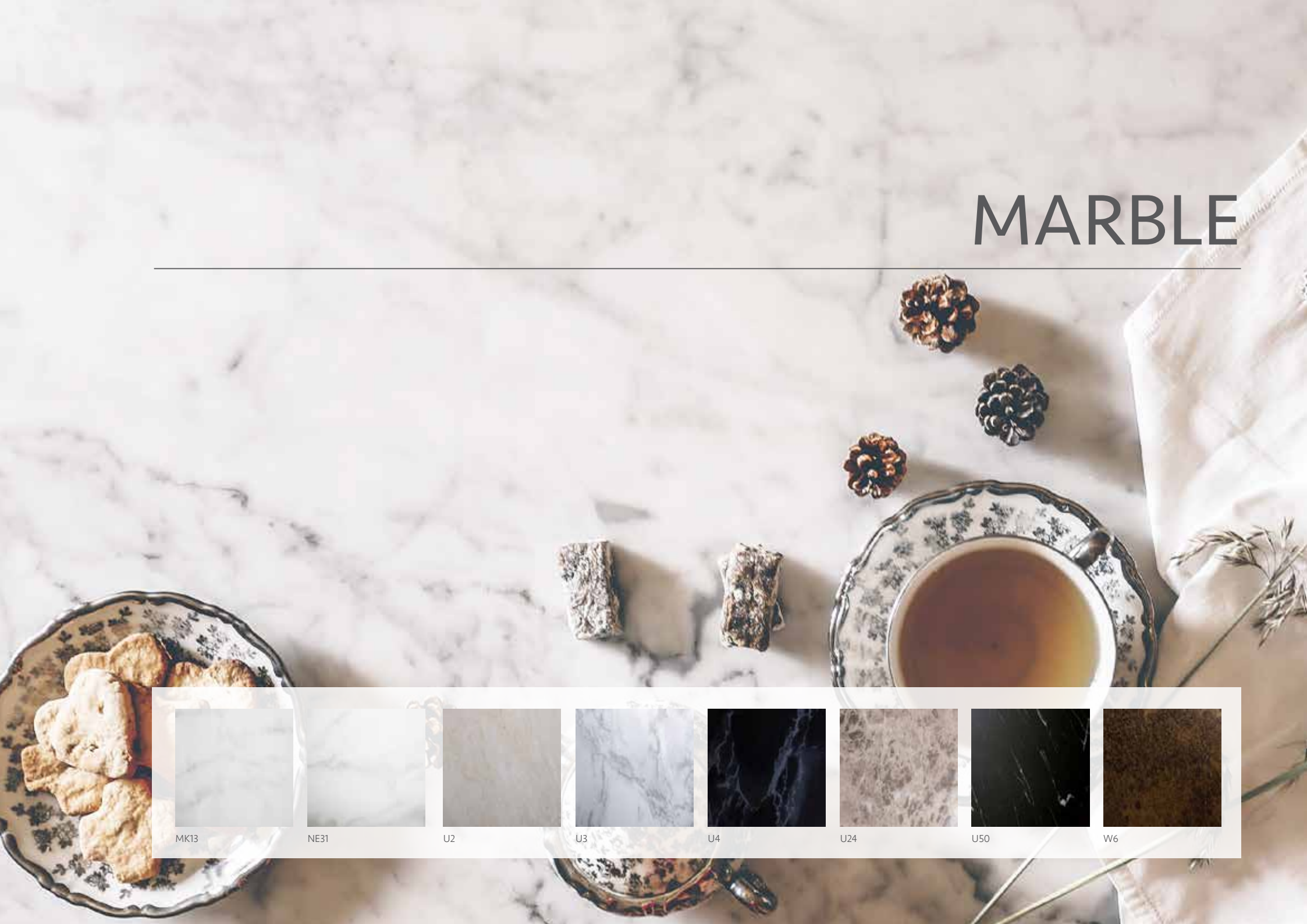


X50



X51

MARBLE



MK13

NE31

U2

U3

U4

U24

U50

W6

METALLIC

COVER STYLE



NE47



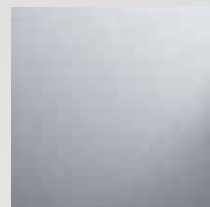
NE49



P1



P2



Q1



Q2



Q3



Q50



Q51



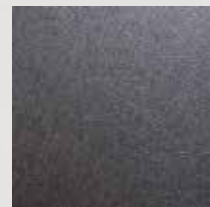
R3



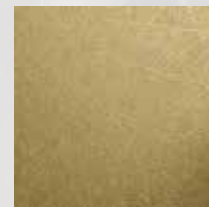
S1



S7



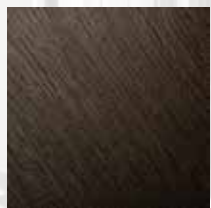
T1



T2



U16



Y4



Z2



Z8

NATURAL STONE

COVER STYL'



MK07



MK15



NE11



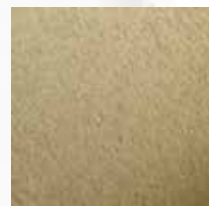
NE22



NE24



NE26



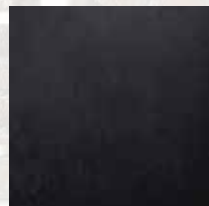
NE28



U7



U9



U10



U19



U20



U21



U22



U25



U26



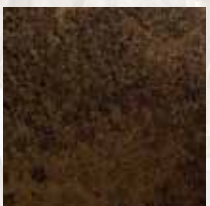
U27



W3



W4



W6



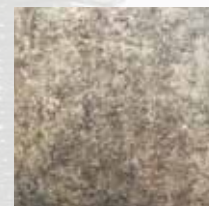
W8



W9



W11



W50

SOLID COLOURS

COVER STYL'

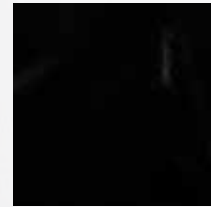




J3



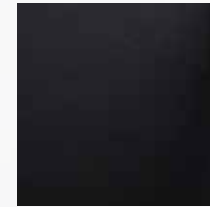
J4



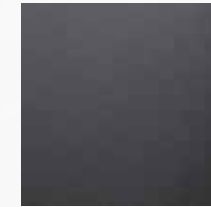
J5



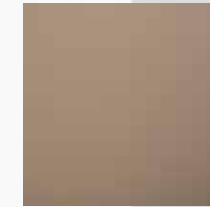
J6



K1



K2



K4



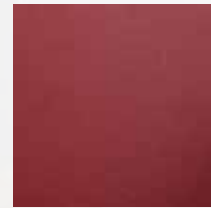
K5



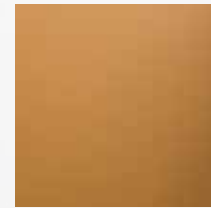
K6



K7



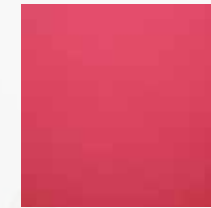
L2



L3



L4



L5



M0



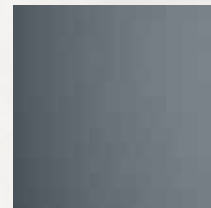
M1



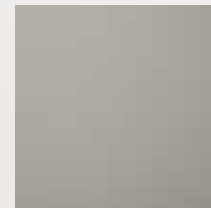
M4



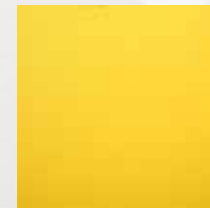
M5



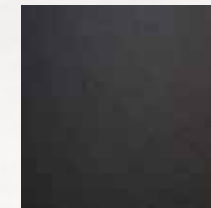
M6



M7



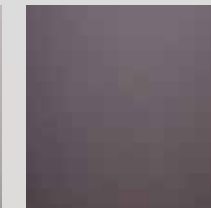
M8



M9



M10



M50



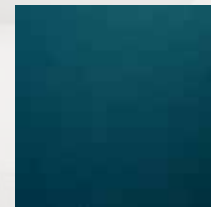
N3



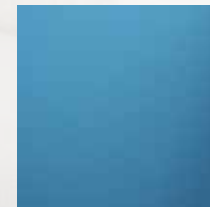
N4



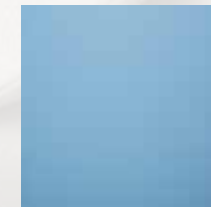
NE54



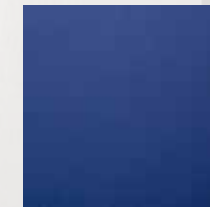
O2



O4



O6



O7



“
NEW LIFE INTO
FURNITURE
AND INTERIOR
SURFACES
”



“
QUICK
AND EASY
INSTALLATION
”



AFTER



BEFORE



AFTER

“
LOW-
MAINTENANCE,
COST-EFFECTIVE
REFURBISHMENT
SOLUTION
”



“
WRAP ANY
SURFACE VIRTUALLY
ANYWHERE
”



3M DI-NOC EXTERIOR SERIES EXTERIOR ARCHITECTURAL FINISHES

3M DI-NOC Exterior Architectural Finishes are durable, dimensionally stable, and weather resistant surface finishes designed to transform the exterior of buildings.

3M DI-NOC Exterior range can add life to tired building fronts, offering a great, cost effective alternative to traditional solutions. The self-adhesive finishes allow building's exterior to maintain a consistent finish and colour, despite UV exposure and other conditions. The product offers great value to both commercial and residential refurbishments, due to its minimum downtime as a result of the ease of application and no drying time, unlike paint, with the product offering a life expectancy of up to 10 years.



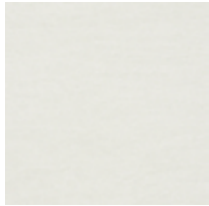
THE RANGE

3M DI-NOC Exterior is available in 24 standard colours, with these surface finishes ranging from the warmth of wood grain, sleek feel of metal, cool essence of natural stone and pure colours, offering a wide variety of choice to the customers.

Key Benefits

- Fast, clean and easy redecoration
- 10 year durability
- Reduced downtime due to ease of installation
- Cost effective alternative

CERAMIC



AE-1632EX



AE-1634EX



AE-1635EX

FINE WOOD



FW-1122EX



FW-1214EX



FW-233EX



FW-618EX

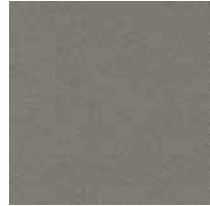


FW-625EX

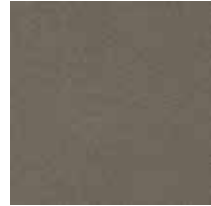
METALLIC



PW-887EX



PA-038EX



PA-039EX



PA-181EX



PA-1854EX



PA-187EX

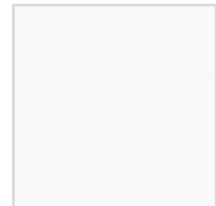


PA-389EX

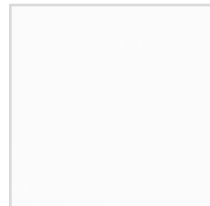


PS-090EX

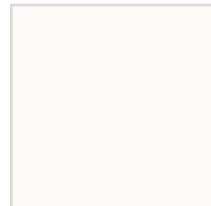
SINGLE COLOUR



PS-957EX

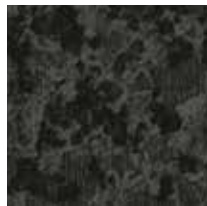


PS-959EX



PS-976EX

STONE



ST-442EX



ST-736EX

WOOD GRAIN



WG-1140EX



WG-657EX



WG-960EX



“
OUTDOOR
DURABLE
TOP LAYER
TO PROTECT
AGAINST UV
DISCOLORATION
AND DAMAGE
”



AVERY DENNISON FACADE FILM

EXTERIOR BUILDING RENOVATION

Avery Dennison Facade Film is a premium quality, comfortable cast film designed to meet the demands of application and exposure on building facades, panels and window frames for restoration, restyling or branding purposes.

With the film having high adhesion onto difficult building substrates such as plastics, aluminium, uncoated/coated steel and reinforced facade panels, it is an excellent alternative to paint. The product offers exceptional value for commercial and residential refurbishments, minimizing downtime due to the ease of application and no drying time, unlike paint and also comes with a life expectancy of up to 10 years.





THE RANGE

Avery Dennison Facade Film is available in 22 standard colours, with these off the shelf colours covering a broad range to suit customers' needs, all in stock and available to be ordered by the metre, for next day delivery. Colour matching is also available for commercial projects with short lead times and minimum order quantities.

Key Benefits

- Fast, clean and easy redecoration
- Conforms over curved, irregular surfaces for a smooth paint-like finish
- Cost effective solution versus conventional paint
- Minimal disruption and downtime

RED



FF RAL 3003G



FF RAL 3005G



FF RAL 3005L

BLUE



FF RAL 5001G



FF RAL 5003G



FF RAL 5005G



FF RAL 5011G



FF RAL 6007G

GREEN



FF RAL 6009G



FF RAL 7016G



FF RAL 7016L



FF RAL 7021G



FF RAL 7022G



FF RAL 7022L



FF RAL 9001G



FF RAL 9001L

CREAM

BLACK



FF RAL 9005G

ALUMINIUM



FF RAL 9006G



FF RAL 9007G

WHITE



FF RAL 9010G



FF RAL 9010L



FF RAL 9016G

CUSTOM



CUSTOM COLOUR MATCHING



“
PAINTING
WITH FILM
”





ARCHITEXTURAL™

Surface. Designed.

01833 690305
info@architextural.co.uk
www.architextural.co.uk

 @Architextural
 @WilliamSmith1832

