





melba swintex

Contents



General

About 02



Signs

Q-Sign 20
Q-Sign Supplementary Plate 31
Hangman 32



Cones

Bigfoot 04
Mastercone 05
Starlite 06
MPL 07
Kingkone 08
Contractor 09
Minisign 10
3 Sided Bollard 11



Trench Covers

1200x800 Tuff Trench 34



Cable Covers

Cable Covers 36



Barriers

Olympic 13
Vision 14
Master (Stacca) 15
Tuff 16
Gate 17
EuroVision 18
Thor 19
1m Stacca 20
WonderWall™ 21
Buddha 22
DoubleTop 23
Road Runner 24
Utility 25
the Postman 26
Cross-Trench Support 27
Barrier Colours 28



Cylinders

Swinbac 38
Kingpin 39
Flexi Cylinder 40
Ariane Twist-Lock 41



Ramps

Melba 43
Miniramp 44
Kerb Buddy 45
Hose Cover 46
Access 47



Verge Posts

Springbac	49
Ecopost	50



Event Management

Boss	52
------	----



Bases

Fence Foot MKII	54
Anti-Trip Foot	55
Standard Foot	56
Tuff Foot	57
Tuff-A Foot	58
28kg Footplate	59
Panolest Base	60
Road Rock	61
Defiance Base	63
Cats Eye Base	64



Litter Bins

Falcon	66
Merlin	67
Osprey	68
Darcy	69
Doggy Bin	70
Copperfield	71
Pickwick	72
Nickleby	73
Byron	74
Shelley	75
Oil Drum Converter	76



Miscellaneous

Bin Lid	78
Buckets	79
Barrier Wind Resistance	80
Q-Sign Wind Resistance	81

How to Find Us

Address: Derby Works
Manchester Road
Bury
Lancashire
BL9 9NX

Telephone: +44 (0)161 761 4933

Fax: +44 (0)161 797 1146

Web: www.melbaswintex.com

Disclaimer

The contents and information contained in this brochure are intended for general marketing purposes only. Melba Swintex reserves the right to alter specifications and designs without prior notice. All weights are an approximate figure rounded to the nearest second decimal place.

About

Our Mission

TO BE THE WORLD **LEADING** SUPPLIER OF
TEMPORARY TRAFFIC MANAGEMENT EQUIPMENT
BY **EXCEEDING** OUR CUSTOMERS EXPECTATIONS
IN QUALITY, DELIVERY AND CONTINUOUS IMPROVEMENT

Who We Are

Melba Swintex is the world's leading manufacturer of temporary traffic management products. With a range that complies with all national and international standards.

The management has a wealth of knowledge and experience in the design and manufacture of traffic products, and also works together with our partners to provide customised products for the industry. Melba Swintex is proud of it's record in designing and producing innovative products to meet industry standards.

The company perform a number of manufacturing processes that include compression moulding, blow moulding, injection moulding, rotational moulding, the manufacture of reflective sheeting, and processes which recycle a variety of waste plastics into new products.

As with most progressive companies, we have a solid commitment to the environment. We recycle 10,000 tonnes of material in the manufacturing of our products.

Melba Swintex has built it's reputation on the quality of it's products and services, which our customers have come to expect. Our aim is to not only maintain this reputation, but to build on it.

Key



- Product conforms to British Standards.



- Manufactured from materials that can be recycled.



- Various colours available to order (minimum order quantity required).



- Product is currently in the process of patent approval, or approved.



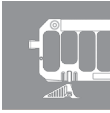
- Fitted with high performance prismatic Starlux® pocketed sleeve.



- Tested & Kitemarked by the British Standards Institution.



Cones



Bigfoot

Description:

The Bigfoot Cone is long established as the industry leader for Traffic Cones. It was the first two piece cone to be manufactured, and is the benchmark for Traffic Cones all over the world. The cone base is manufactured from recycled material, and can be coloured on request.

Features:

- Blow moulded top with easy grip access.
- 100% thermoplastic recyclable base with anti-slip feature.
- Fitted with high performance prismatic Starlux® pocketed sleeve, offering superb daylight luminance and night time reflectivity.
- Bases & centres can also be embossed and/or coloured.

Standards:

- Conforms to requirements of **BSEN13422**
- Chapter 8 - The Traffic Signs Manual
- The Red Book 2013
- Traffic Signs Regulations & General Directions



500 mm

750 mm

1 m

Size 2:

Our 750mm Bigfoot Cone is also available in a Recessed, Straight Sided, or Lightweight Base version.



Height:	500 mm
Weight:	2.35 kg
Height:	750 mm
Weight:	4.60 kg
Height:	1000 mm
Weight:	8.10 kg

*All weights are approximate

The information given on these sheets is typical of the product depicted it must not be interpreted as a guarantee of individual product performance and/or characteristics. We reserve the right to alter specifications and designs without prior notice. All measurements are in millimetres (mm)



FM 673547



Mastercone

Description:

One of the most practical two piece cones on the market. The Mastercone has been dominant on the roads for many years. Incorporating the Melba Swintex high performance prismatic Starlux® sleeve, the Mastercone is highly visible to all motorists.

Features:

- Blow moulded top with easy grip access.
- 100% thermoplastic recyclable PVC base with anti-slip feature.
- Fitted with high performance Starlux® pocketed prismatic sleeve, offering superb daylight luminance and night time reflectivity.
- Bases & centres can also be embossed and coloured.
- Centre manufactured from recyclable LDPE and HDPE combined.

Standards:

- Conforms to requirements of **BSEN13422**
- Chapter 8 - The Traffic Signs Manual
- The Red Book 2013
- Traffic Signs Regulations & General Directions



500 mm

750 mm

1 m



Height:	500 mm
Weight:	2.25 kg
Height:	750 mm
Weight:	4.40 kg
Height:	1000 mm
Weight:	7.50 kg

*All weights are approximate

The information given on these sheets is typical of the product depicted it must not be interpreted as a guarantee of individual product performance and/or characteristics. We reserve the right to alter specifications and designs without prior notice. All measurements are in millimetres (mm)



FM 673547

Starlite

Description:

The Starlite cone is a two piece cone, with it's centre manufactured from virgin HDPE, and base from recycled PVC. The cone is 100% recyclable and is fitted with the Melba Swintex high performance prismatic Starlux® sleeve.

Features:

- Blow moulded top with easy grip access.
- 100% thermoplastic recyclable base with anti-slip feature.
- Fitted with high performance Starlux® pocketed prismatic sleeve, offering superb daylight luminance and night time reflectivity.
- Bases & centres can also be embossed and coloured.

Standards:

- Conforms to requirements of **BSEN13422**
- Chapter 8 - The Traffic Signs Manual
- The Red Book 2013
- Traffic Signs Regulations & General Directions



750mm



1Mtr



Height:	750mm
Weight:	4.15kg
Height:	1000mm
Weight:	6.50kg

*All weights are approximate

The information given on these sheets is typical of the product depicted it must not be interpreted as a guarantee of individual product performance and/or characteristics. We reserve the right to alter specifications and designs without prior notice. All measurements are in millimetres (mm)



FM 673547

MPL

Description:

The MPL is a cost effective one piece cone, manufactured from 100% recycled thermoplastic, which is recyclable, making the MPL range a completely environmentally friendly cone family. The base can be coloured to suit, and/or embossed with a company logo.



Standards:

- Conforms to requirements of **BSEN13422**
- Chapter 8 - The Traffic Signs Manual
- The Red Book 2013
- Traffic Signs Regulations & General Directions



500mm

750mm

No Waiting



Height:	500 mm
Weight:	3.00 kg
Height:	750 mm
Weight:	5.00 kg

*All weights are approximate

The information given on these sheets is typical of the product depicted it must not be interpreted as a guarantee of individual product performance and/or characteristics. We reserve the right to alter specifications and designs without prior notice. All measurements are in millimetres (mm)



FM 673547

Kingkone

Description:

The Kingkone comes in two types; a two piece blow moulded 460 mm cone, or a one piece, sand weighted, blow moulded 750 mm cone.

Kingkone 460 mm:

- Two-piece blow moulded cone, with recyclable PVC base.

Kingkone 750 mm:

- Extra strong sand ballast retention.
- Bind free stacking.



460mm



750mm

Standards:

- Conforms to requirements of **BSEN13422**
- Chapter 8 - The Traffic Signs Manual
- The Red Book 2013
- Traffic Signs Regulations & General Directions



Height:	460 mm
Weight:	2.75 kg
Height:	750 mm
Weight:	5.50 kg

*All weights are approximate

The information given on these sheets is typical of the product depicted it must not be interpreted as a guarantee of individual product performance and/or characteristics. We reserve the right to alter specifications and designs without prior notice. All measurements are in millimetres (mm)



FM 673547

Contractor

Description:

The Contractor cone is a sand weighted one piece cone, which is small and compact in size. Ideal for short-term traffic management.

Features:

- Manufactured from recyclable LLDPE.
- Sand weighted ensures secure positioning.
- Available in a variety of colours.
- Various sleeve choices available.

Standards:

- Conforms to requirements of **BSEN13422**
- Chapter 8 - The Traffic Signs Manual
- The Red Book 2013
- Traffic Signs Regulations & General Directions



D2 Sleeve



D2 Bands



Height:	460 mm
Weight:	1.40 kg
Height:	750 mm
Weight:	6.00 kg

*All weights are approximate

The information given on these sheets is typical of the product depicted it must not be interpreted as a guarantee of individual product performance and/or characteristics. We reserve the right to alter specifications and designs without prior notice. All measurements are in millimetres (mm)



FM 673547

Minisign

Description:

The Minisign is a two part cone that displays a unique shape. The top is manufactured from LDPE, and the base is manufactured from 100% recycled PVC.

Options:

No Waiting/Police No Waiting. Embossing service available.



Standards:

- The Red Book 2013
- Traffic Signs Regulations & General Directions



Height:	480 mm
Width:	330 mm
Weight:	3.80 kg

*All weights are approximate

The information given on these sheets is typical of the product depicted it must not be interpreted as a guarantee of individual product performance and/or characteristics. We reserve the right to alter specifications and designs without prior notice. All measurements are in millimetres (mm)



FM 673547

3 Sided Bollard

Description:

The tough 3 Sided Bollard is the ideal cone for implementing parking restrictions.

Features:

- Injection moulded from recycled PVC.
- High-in-strength and durable.
- Simple to stack.
- 3 sided for easy-to-read viewing.
- The weight helps to prevent wind movement on the cone.

Standards:

- Chapter 8 - The Traffic Signs Manual
- The Red Book 2013
- Traffic Signs Regulations & General Directions



No Waiting



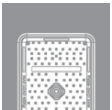
Height:	500 mm
Width:	390 mm
Weight:	3.85 kg

*All weights are approximate

The information given on these sheets is typical of the product depicted it must not be interpreted as a guarantee of individual product performance and/or characteristics. We reserve the right to alter specifications and designs without prior notice. All measurements are in millimetres (mm)



FM 673547



Barriers

Olympic

Description:

The Olympic Barrier offers the complete versatile system for utility and construction applications with hinged side wings designed to rotate and self lock at every 90°. This unique feature allows contractors to create configurations to protect temporary pathway excavations and road works of all kinds.

Features:

- Side wings fold - Easy transport where space is limited.
- Side wings rotate and lock at 90°.
- Fixing area for courtesy board.
- Sliding linking clips to extend barrier.
- Feet can swivel 360°.
- Available in various colours.
- Side wings can be used as door access.

Standards:

- Conforms to requirements of **BSEN8442**
- Reflectivity requirements of **BSEN12899-1**
- Chapter 8 - The Traffic Signs Manual
- The Red Book 2013
- Traffic Signs Regulations & General Directions



Boxed



Wings Open



Anti-Trip Feet



Height:	1020 mm
Width:	2000 mm or 1250 mm
Depth:	50 mm
Weight:	10.00 kg Anti-Trip Foot 11.40 kg Standard Foot 15.40 Kg Tuff-AT Foot 15.80 kg Tuff Foot

*All weights are approximate

The information given on these sheets is typical of the product depicted it must not be interpreted as a guarantee of individual product performance and/or characteristics. We reserve the right to alter specifications and designs without prior notice. All measurements are in millimetres (mm)



FM 673547

Vision

Description:

The Vision Barrier can connect to either itself or other existing barriers using the various attachment methods on offer. Reflective strips on the spindles allow increased visibility.

Features:

- Manufactured from virgin HDPE.
- 600 x 450 sign facility.
- Highly reflective sleeves (360°) on two vertical spindles for improved visibility.
- When combined with Cross-Trench Support, the stability is greatly improved, and has extremely good resistance to high wind speeds.
- Q-Clip support for barrier to barrier connection.
- Hook & Eye connection to other barriers.
- Compatible with Master & Gate barriers.
- Customer identification may be embossed into Barrier body.
- Available in other colours upon request.

Standards:

- Conforms to requirements of **BSEN8442**
- Reflectivity requirements of **BSEN12899-1**
- Chapter 8 - The Traffic Signs Manual
- The Red Book 2013
- Traffic Signs Regulations & General Directions



Cross-Trench



Hook & Eye



Q-Clip



Height:
Width:
Depth:
Weight:

1000 mm
2000 mm
50 mm
09.10 kg Anti-Trip Foot
10.50 kg Standard Foot
14.50 kg Tuff-AT Foot
14.90 kg Tuff Foot

**All weights are approximate*

The information given on these sheets is typical of the product depicted it must not be interpreted as a guarantee of individual product performance and/or characteristics. We reserve the right to alter specifications and designs without prior notice. All measurements are in millimetres (mm)



FM 673547

Master (Stacca)

Description:

The Master Barrier is our most successful barrier, with its high tensile strength and lightness, it makes it the perfect barrier for any form of utility works. The addition of anti-trip feet allow pathways to be kept clear for pedestrian access.

Features:

- Free standing with 360° swivel feet.
- Free from screws and rivets.
- Moulded in orange as standard, but can be coloured to suit.
- Feet can be coloured to suit.
- Barrier to barrier connection is quick and easy for use on uneven ground.
- Information sign can be attached.
- Reflective strip at top and bottom.
- Company identification can be embossed.
- Manufactured from virgin HDPE.
- Bottom reflective strip if requested.

Standards:

- Conforms to requirements of **BSEN8442**
- Reflectivity requirements of **BSEN12899-1**
- Chapter 8 - The Traffic Signs Manual
- The Red Book 2013
- Traffic Signs Regulations & General Directions



Anti-Trip Feet



Standard Foot



Height:	1000 mm
Width:	2000 mm
Depth:	50 mm
Weight:	09.10 kg Anti-Trip Foot 10.50 kg Standard Foot

*All weights are approximate

The information given on these sheets is typical of the product depicted it must not be interpreted as a guarantee of individual product performance and/or characteristics. We reserve the right to alter specifications and designs without prior notice. All measurements are in millimetres (mm)



FM 673547

Tuff Barrier

Description:

The Tuff Barrier is a stylish, tough and durable barrier. Incorporating the Q-Clip, the barriers connect together in a linear row, When combined with the Cross-Trench support, the barriers become highly wind resistant.

Features:

- Manufactured from virgin HDPE.
- 600 x 450 sign facility.
- Moulded in orange as standard, but can be coloured to suit.
- When combined with Cross-Trench Support, the stability is greatly improved, and has extremely good resistance to high winds.
- Q-Clip for barrier to barrier connection.
- Barrier may be coloured.
- Compatible with Master barrier.
- Customer identification can be embossed.

Standards:

- Conforms to requirements of **BSEN8442**
- Reflectivity requirements of **BSEN12899-1**
- Chapter 8 - The Traffic Signs Manual
- The Red Book 2013
- Traffic Signs Regulations & General Directions



Cross-Trench



Tuff-AT Foot



Tuff Foot



Height:	1000 mm
Width:	2000 mm
Depth:	50 mm
Weight:	09.10 kg Anti-Trip Foot
	10.50 kg Standard Foot
	14.50 kg Tuff-AT Foot
	14.90 kg Tuff Foot

*All weights are approximate

The information given on these sheets is typical of the product depicted it must not be interpreted as a guarantee of individual product performance and/or characteristics. We reserve the right to alter specifications and designs without prior notice. All measurements are in millimetres (mm)



FM 673547

Gate

Description:

The Gate is one of the most popular blow moulded barriers. This superior blow moulded HDPE barrier offers superb quality at a low life cost.

Features:

- Incredible strength and durability.
- Free standing with 360° swivel feet.
- Free from screws and rivets.
- Stacks in 50 mm (2 inch) with location (40 per pallet).
- Moulded in orange as standard, but can be coloured to suit.
- Coloured feet if desired.
- A moulded lamp connector.
- Barrier to barrier connection is quick and easy to use on uneven ground.
- Manufactured in High Density Polyethylene.
- Company identification can be embossed.

Standards:

- Conforms to requirements of **BSEN8442**
- Reflectivity requirements of **BSEN12899-1**
- Chapter 8 - The Traffic Signs Manual
- The Red Book 2013
- Traffic Signs Regulations & General Directions



Front



Anti-Trip Feet



Height:	1000 mm
Width:	2000 mm
Depth:	50 mm
Weight:	08.90 kg Anti-Trip Foot 10.30 kg Standard foot

*All weights are approximate

The information given on these sheets is typical of the product depicted it must not be interpreted as a guarantee of individual product performance and/or characteristics. We reserve the right to alter specifications and designs without prior notice. All measurements are in millimetres (mm)

REMA



FM 673547

EuroVision

Description:

The EuroVision is an adaptation of the popular Vision Barrier, fitted with a deeper, highly reflective strip for conformance to European Standards.

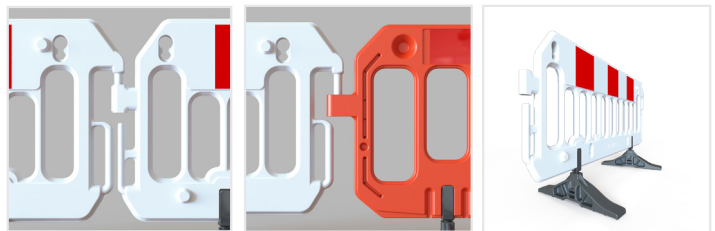
Features:

- Manufactured from virgin HDPE.
- Q-Clip support for barrier to barrier connection.
- Hook & Eye connection to other barriers.
- Compatible with existing Melba Swintex Barriers.
- Customer identification may be embossed into Barrier body.
- Available in other colours upon request.
- Deeper reflective for European Continent.



Standards:

- Conforms to requirements of **BSEN8442**
- Reflectivity requirements of **BSEN12899-1**
- Chapter 8 - The Traffic Signs Manual
- The Red Book 2013
- Traffic Signs Regulations & General Directions



Connection

Link to Gate

Tuff Foot



Height:

1000mm

Width:

2000mm

Depth:

50mm

Weight:

09.30kg Anti-Trip Foot

10.70kg Standard Foot

14.70kg Tuff-AT Foot

15.10kg Tuff Foot

*All weights are approximate

The information given on these sheets is typical of the product depicted it must not be interpreted as a guarantee of individual product performance and/or characteristics. We reserve the right to alter specifications and designs without prior notice. All measurements are in millimetres (mm)



FM 673547

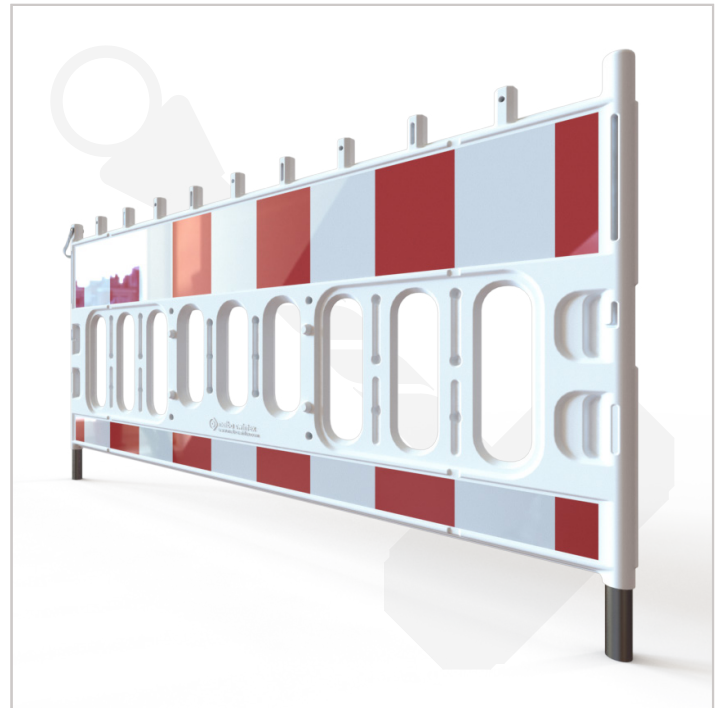
Thor Barrier

Description:

The Thor Barrier is a highly robust and protective Barrier that can be deployed to guide vehicles and pedestrians on to the correct path when required. Over engineered to produce great strength, and almost near to impossible to knock over when used with the 28 kg Footplate.

Features:

- Various locations for a lamp.
- Customer identification can be embossed.
- Can be in corporate colours.
- Facility for a sign.
- Incredibly strong & durable.
- Connected together using the high strength Thor Hook.
- Stacking for ease of transport.
- Steel tubing legs increase strength & stability.
- Work in conjunction with the 28 kg Footplate.
- Deeper Scotchlite & Bottom strip for greater visibility.
- Completely recyclable.
- Manufactured from Virgin HDPE.



Standards:

- Conforms to requirements of **BSEN8442**
- Reflectivity requirements of **BSEN12899-1**
- The Red Book 2013
- Traffic Signs Regulations & General Directions
- TL Absperschraken 97
- TL-Aufstellvorrichtungen 97
- Conforms to requirements of ZTV-SA



Height:	1060 mm
Width:	2060 mm
Depth:	50 mm
Weight:	9.5 kg

***All weights are approximate**

The information given on these sheets is typical of the product depicted it must not be interpreted as a guarantee of individual product performance and/or characteristics. We reserve the right to alter specifications and designs without prior notice. All measurements are in millimetres (mm)

REMA



FM 673547

1m Stacca

Description:

The 1m Stacca barrier is both strong, and light in weight, and is ideal to use for utility based works. The addition of anti-trip feet allow pathways to be kept clear for pedestrian access.

Features:

- Incredible strength and durability.
- Free standing with 360° swivel feet.
- Moulded in orange as standard.
- Coloured feet if desired.
- Barrier to barrier connection is quick and easy to use.
- Company identification can be embossed.
- Manufactured in High Density Polyethylene.
- Can be used with barrier boards.

Standards:

- Conforms to requirements of **BSEN8442**
- Reflectivity requirements of **BSEN12899-1**
- Chapter 8 - The Traffic Signs Manual
- The Red Book 2013
- Traffic Signs Regulations & General Directions



Anti-Trip Foot



1250 mm



Size 1	
Height	1000 mm
Depth	50 mm
Width	1000 mm
Weight	9.60 kg
Size 2	
Height	1000 mm
Depth	50 mm
Width	1250 mm
Weight	10.15 kg

*All weights are approximate

The information given on these sheets is typical of the product depicted it must not be interpreted as a guarantee of individual product performance and/or characteristics. We reserve the right to alter specifications and designs without prior notice. All measurements are in millimetres (mm)



FM 673547

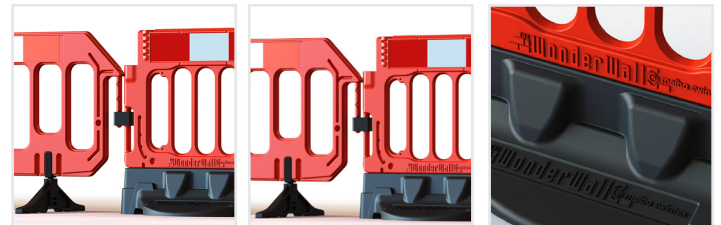
WonderWall™

Description:

The WonderWall™ is a heavy duty, enhanced Barrier system. The robust Barrier gives stability in high winds without the need for extra ballast. It creates a safer working environment when Barrier is deployed near the road side, or excavations on site. Can be moved with ease by one person, and can be moved via Fork-lift truck when the Bases are stacked.

Features:

- Pedestrian & Plant WonderDoor™ can be used.
- The WonderDoor™ system can be created using the Melba Swintex S-Clip, as well as connection to existing Barrier systems.
- Embossing with corporate branding on both the Base and Top.
- Tops and Bases can be coloured coded for corporate identity .
- Holes in base for Fork lift entry.
- Location holes for a 600 x 450 Courtesy Sign, & Lamp bracket.
- Bases can stack with one another.
- Reflective area for high visibility.
- Compatible with existing systems.
- Facility to take a double decked system.
- 21 pieces each to a pallet.



Connection WonderDoor™ Embossing

Standards:

- Reflectivity requirements of **BSEN12899-1**
- Chapter 8 - The Traffic Signs Manual
- Traffic Signs Regulations & General Directions

Height:	1000 mm
Width:	1140 mm
Barrier Depth:	50 mm
Base Depth:	500 mm
Weight:	25 kg

*All weights are approximate



The information given on these sheets is typical of the product depicted it must not be interpreted as a guarantee of individual product performance and/or characteristics. We reserve the right to alter specifications and designs without prior notice. All measurements are in millimetres (mm)



FM 673547

Buddha Barrier

Description:

The Buddha Barrier is a uniquely designed, completely anti-trip Water Filled Separator. At 800 mm in height, it creates a safer environment for pedestrians over traditional Water Filled Separators, as well as this, the Buddha Barrier can be fitted with the DoubleTop that creates a barrier over 1.8 m in height.

Features:

- Can be used either way due to Dual Reflective.
- Completely Anti-Trip.
- Connect to one another using the S-Clip.
- Concave area can be used for spoil placement.
- Two can be faced together over exposed holes & damaged manhole covers.
- Capacity to hold 22 litres bringing the complete weight to 27.2 kg.
- Large Corporate Branding area of 300 x 170 mm.
- Overflow indication prevents overfilling.
- Manufactured from HDPE & 100% recyclable.
- Can be positioned at a over 270°.
- Hole & Bung can be supplied if required.
- Patented Product.



Top Deck

Over 270°

Closed

Standards:

- Reflectivity requirements of **BSEN12899-1**



Height:	800 mm
Width:	1040 mm
Depth:	280 mm
Weight Empty:	5.5 kg
Weight Filled:	27.5 kg
Pal. Quantity:	22

*All weights are approximate

The information given on these sheets is typical of the product depicted it must not be interpreted as a guarantee of individual product performance and/or characteristics. We reserve the right to alter specifications and designs without prior notice. All measurements are in millimetres (mm)



FM 673547

DoubleTop Barrier

Description:

The DoubleTop is a multi-use barrier top designed for use on the WonderWall™ and Buddha barrier systems. Simple Hook & Eye connectivity removes the need for additional brackets associated with conventional metal tops. The DoubleTop is lightweight, durable and has the option for reflective on the spindles.

Features:

- Highly reflective sleeves (360°) on two vertical spindles for improved visibility.
- Hook & Eye connection for easier installation.
- Red & white panels as standard.
- No sharp edges.
- Secure stacking for ease of transport.
- S-Clip option available for T-Junction connections.
- Can be embossed and/or colour coded for corporate identification.
- Manufactured from HDPE & 100% recyclable.

Standards:

- Reflectivity requirements of **BSEN12899-1**
- Chapter 8 - The Traffic Signs Manual



**Buddha
Compatible**



**WonderWall™
Boxed**



T-Junction



Height:	1000 mm
Overall Height:	2000 mm - WonderWall™ 1800 mm - Buddha
Width:	1115 mm
Depth:	60 mm
Weight:	2.8 kg

*All weights are approximate

The information given on these sheets is typical of the product depicted it must not be interpreted as a guarantee of individual product performance and/or characteristics. We reserve the right to alter specifications and designs without prior notice. All measurements are in millimetres (mm)



FM 673547

Road Runner

Description:

The Road Runner is a self-weighted Delineator which does not require filling of sand or water. Wheels allow for easy manoeuvring, and a tail that allows for a quick connection.

Features:

- Weighs 22.5 kg, water or sand are not required.
- Pin on tail interlocks with underside of adjoining separator to create lanes.
- Wheels for easy movement.
- Robust - able to withstand high impacts
- Superb wind resistance.
- Fork lift slots on the bottom.
- 25 per pallet.
- Top manufactured from Virgin HDPE.
- Base manufactured from recycled PVC.
- By weight 92% recycled material.
- Available in Red and White.



Interlocking



Wheels



Transport



Height:	600 mm
Width:	1 140 mm
Depth:	300 mm
Weight:	22.50 kg

*All weights are approximate

The information given on these sheets is typical of the product depicted it must not be interpreted as a guarantee of individual product performance and/or characteristics. We reserve the right to alter specifications and designs without prior notice. All measurements are in millimetres (mm)



FM 673547

    Utility Barrier

Description:

The Utility Barrier is the ideal solution for any variety of Utility Works. Completely manufactured within the UK at the Melba Swintex factory, with its unique and protected D-Hinge™ system, the Barrier becomes incredibly stable. The Utility Barrier and D-Hinge™ have been designed to connect to the existing metal gate systems, and other plastic Barriers already on the market. The upper area of the Utility Barrier has been designed with an increased area for Highly Reflective material, making the Barrier fully equipped for the European market.

Features:

- Manufactured by Melba Swintex in the UK.
- Incredibly stable thanks to the D-Hinge™ & D-Clip™.
- Facility for a 600 x 450 courtesy sign.
- Corporate branding can be embossed.
- Compatible with existing barriers.
- Higher reflective area.
- Deep channels to prevent collection of rainwater.
- Incredibly durable & lightweight.
- Product stacks with itself in every orientation.



D-Hinge™



1 m Version



D-Hook™

Standards:

- Reflectivity requirements of **BSEN12899-1**
- Chapter 8 - The Traffic Signs Manual
- Traffic Signs Regulations & General Directions

Height:	1000 mm
Panel Width:	750 mm or 1000 mm
Panel Depth:	20 mm
Panel Weight:	2.70 kg & 3.60 kg

*All weights are approximate



The information given on these sheets is typical of the product depicted it must not be interpreted as a guarantee of individual product performance and/or characteristics. We reserve the right to alter specifications and designs without prior notice. All measurements are in millimetres (mm)



FM 673547

The Postman

Description:

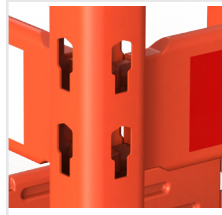
The Postman takes the current temporary barrier system within utility works and updates it by implementing a range of innovative features & increasing its strength and durability.

Features:

- Post is high enough so that a temporary lamp can be attached into the top and the planks can be removed.
- Posts & Planks can be manufactured in corporate colours to suit.
- Bases can be colour coated.
- Posts, Planks & Bases can have corporate brands embossed onto.
- Planks are extremely durable and can last 8 times longer than uPVC Planks.
- Base fits securely over the post and can also be doubled up.
- All three products are compatible with older systems.

Standards:

- Conforms to requirements of **BSEN8442**
- Reflectivity requirements of **BSEN12899-1**
- Chapter 8 - The Traffic Signs Manual
- The Red Book 2013
- Traffic Signs Regulations & General Directions



Connection



Stacking



Embossing



Overall Height:	1170 mm
Overall Weight:	7.95 kg
Base Width:	450 mm
Plank Width:	1.25 m & 2 m
Post Width:	100 mm
Plank Depth:	30 mm
Base Depth:	450 mm
Post Depth:	100 mm

*All weights are approximate

The information given on these sheets is typical of the product depicted it must not be interpreted as a guarantee of individual product performance and/or characteristics. We reserve the right to alter specifications and designs without prior notice. All measurements are in millimetres (mm)



FM 673547

Cross-Trench Support

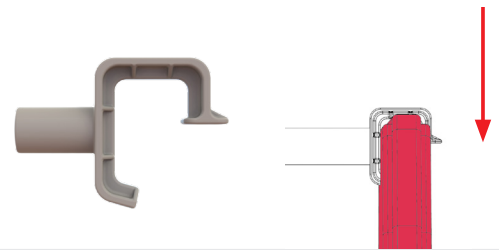
The Cross-Trench Support is a structure that can be created using existing Melba Swintex barriers, and an adjustable telescopic pole. The support can securely fasten two barriers in parallel. Creating a sturdy barrier system which is able to withstand the toughest elements. The structure is ideal over small trenches, and can be pre-assembled, before use.

Min Length:	1100 mm
Max Length:	1800 mm
Twist-to-Lock:	Vision & Stacca MK4 Barriers
Clip On:	Olympic, Master, Gate, 1m Stacca Barriers

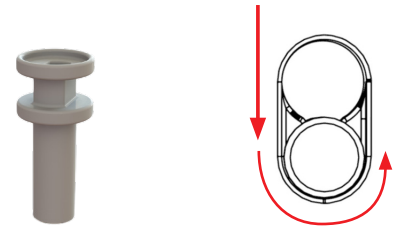
Features:

- Twist-to-lock or clip on.
- Feet can be turned inwards.
- Creates a solid structure.
- No trip hazard from feet when turned inwards.
- Can be pre-assembled.
- Creates greater wind resistance.
- Manufactured with plastic materials.
- Adjustable lengths for various trench sizes.

Clip On



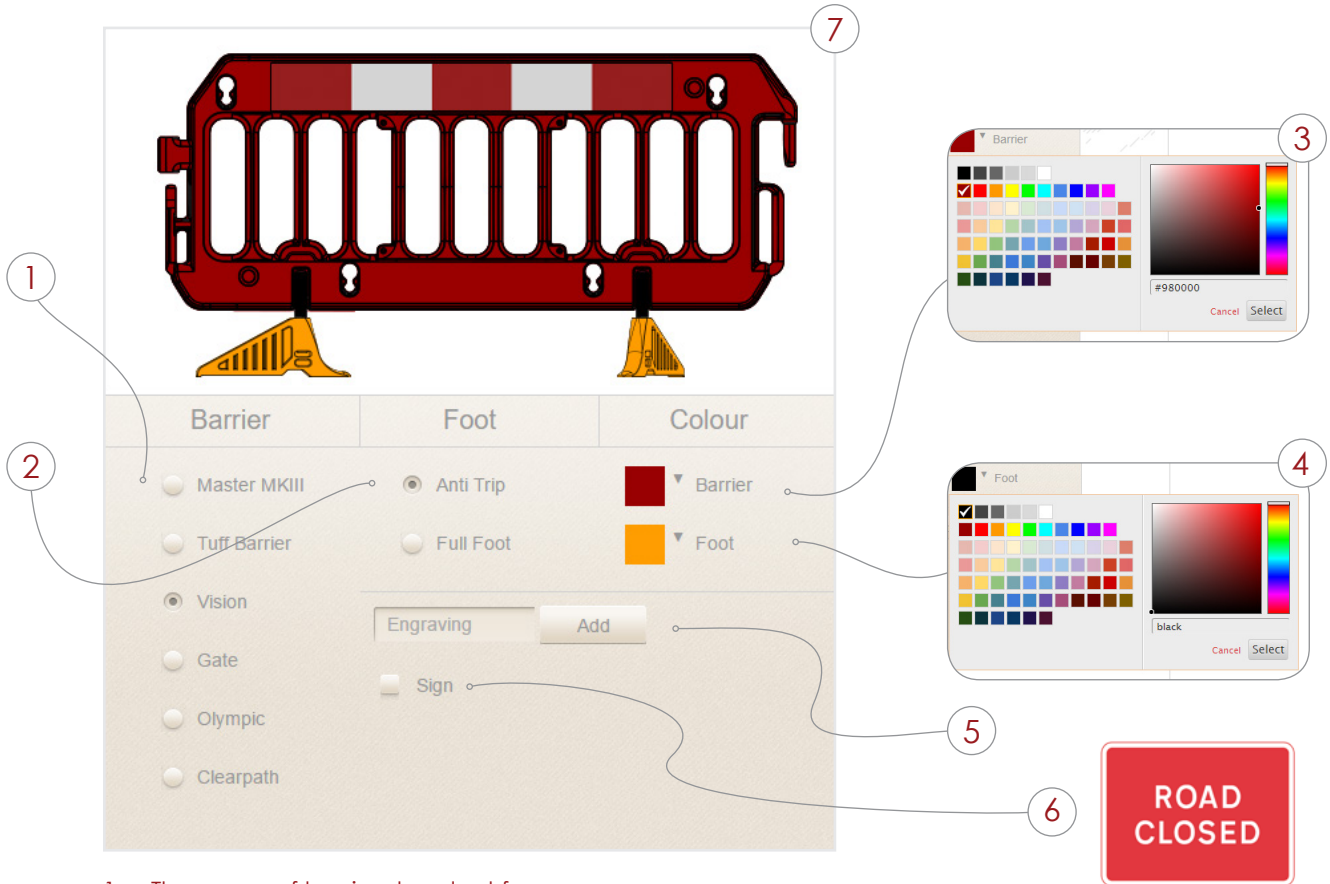
Twist-to-Lock



Barrier Colours

It is now possible to preview the range of Melba Swintex barriers in any desired colour.

Using the online Barrier Colour tool, a barrier can be selected, along with the range of feet, a colour can easily be applied to each.



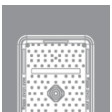
1. The range of barriers to select from.
2. Choices for the range of barrier feet.
3. Choose any colour for the Barrier.
4. Choose any colour for the feet.
5. Add any additional engraving.
6. Add a central sign.
7. Preview how the barrier will look.

Test it out now at:

<http://barrier-colours.melbaswintex.co.uk>



Signs



Q-Sign

Description:

The Q-Sign is the industry leader. The sign is extremely strong and durable. Manufactured from recycled Polypropylene, the sign has no metal parts. Although lightweight, the angled sign is designed to give a strong wind resistance.

Features:

- Long life due to strong and robust design.
- Does not rust.
- Manufactured from recycled Polypropylene in grey.
- Excellent weight and footprint stability.
- Non flammable.
- Easy and safe to handle.
- No sharp edges.
- Priced competitively.
- Stackable for storage and transport.
- Supplementary plate available.

Standards:

- Conforms to requirements of **BS 8442:2015**
- Chapter 8 - The Traffic Signs Manual
- The Red Book 2013
- Traffic Signs Regulations & General Directions



All Signs Thickness		60 mm
Combi	Size:	600 mm
	Weight:	6.20 kg
Triangle	Size:	750 mm
	Weight:	6.80 kg
Circle	Size:	750 mm
	Weight:	7.80 kg
Rectangle	Size:	600 x 450 mm
	Weight:	5.3 kg
Rectangle	Size:	1050 x 450 mm
	Weight:	6.30 kg
Rectangle	Size:	1050 x 750 mm
	Weight:	9.80 kg

*All weights are approximate

The information given on these sheets is typical of the product depicted it must not be interpreted as a guarantee of individual product performance and/or characteristics. We reserve the right to alter specifications and designs without prior notice. All measurements are in millimetres (mm)



FM 673547

Q-Sign Supplementary Plate

Description:

The supplementary plate is designed to fit the 750 mm Triangle Q-Sign.

Weight: 7.50 kg



All standard sign faces available.



Test out how your own customised Q-Sign would look using the Design-a-Sign tool found at:

<https://www.melbaswintex.co.uk/qsign.php>



**Conforming to Traffic Signs Regulations & General Directions
 All weights are approximate

The information given on these sheets is typical of the product depicted it must not be interpreted as a guarantee of individual product performance and/or characteristics. We reserve the right to alter specifications and designs without prior notice. All measurements are in millimetres (mm)



FM 673547

Hangman

Description:

This fast deployable all plastic sign was designed to place on to a traffic cone thus saving space and weight for the user.

Circle



Triangle



Back



Standards:

- Conforms to requirements of **BSEN8442**
- Chapter 8 - The Traffic Signs Manual
- The Red Book 2013
- Traffic Signs Regulations & General Directions

Triangle

Size: 600 mm
 Weight: 0.70 kg

Triangle

Size: 750 mm
 Weight: 1.15 kg

Circle

Size: 600 mm
 Weight: 0.95 kg

Circle

Size: 750 mm
 Weight: 1.40 kg

Rectangle

Size: 600 x 450 mm
 Weight: 0.80 kg



*All weights are approximate

The information given on these sheets is typical of the product depicted it must not be interpreted as a guarantee of individual product performance and/or characteristics. We reserve the right to alter specifications and designs without prior notice. All measurements are in millimetres (mm)



FM 673547



Trench Covers

1200x800 Tuff Trench

Description:

The Tuff Trench is the first blow moulded trench cover on the market. Designed and manufactured in the UK, and made with Utility and Highway contractors in mind. The cover can withstand over 400 kg loads, and has a high impact resistance. Strong, durable and able to protect open areas on the footpath. Manufactured from 100% virgin material and 100% recyclable.

Features:

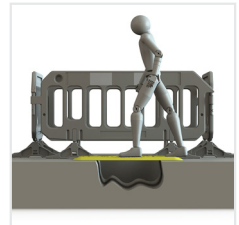
- 4 fixing holes. Must be bolted to the ground.
- Can be fitted with reflective bands.
- Anti-Slip pattern.
- Designed with Anti-Trip edges.
- Able to withstand over 400 kg.
- Handles for easy lifting.
- Single man lift.
- Corporate logos can be embossed onto the top of Tuff Trench cover
- Manufactured in High Density Polyethylene.
- Manufactured in yellow for high visibility, can be bespoke coloured. Minimum run 120 units.
- Tuff Trench is 100% Recyclable
- High impact resistance (Does not shatter).



Handles



Reflective



In Use

Standards:

- Conforms to **National Grid T/SP/E/42**
- The Red Book 2013



Width:	800 mm
Height:	40 mm
Depth:	1200 mm
Weight:	7.20 kg

*All weights are approximate

The information given on these sheets is typical of the product depicted it must not be interpreted as a guarantee of individual product performance and/or characteristics. We reserve the right to alter specifications and designs without prior notice. All measurements are in millimetres (mm)



FM 673547



Cable Covers



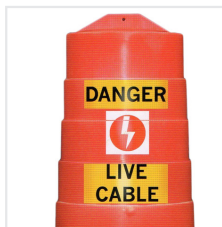
Cable Covers

Description:

Cable covers are hollow, rotationally moulded product, which are placed over exposed cable.

Features:

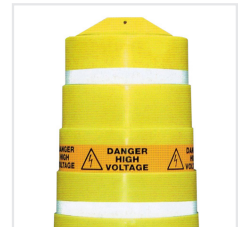
- Designed to provide a highly visible warning to the public that there is a high voltage hazard, to keep left, or a live cable hazard.
- Each cover features a sand ballasted base for added stability.



Live Cable



Keep Left



High Voltage



Height:

1170 mm

Base:

710 mm x 710 mm Hexagonal

Weight:

17.20 kg (Sand Ballasted)

*All weights are approximate

The information given on these sheets is typical of the product depicted it must not be interpreted as a guarantee of individual product performance and/or characteristics. We reserve the right to alter specifications and designs without prior notice. All measurements are in millimetres (mm)



FM 673547



Cylinders



Swinbac

Description:

A self-righting Cylinder with little to no maintenance required. Can be supplied with anchor-bolts or adhesive pads to secure to the ground.

Features:

- Manufactured from recyclable HDPE.
- Variety of colours.
- Lightweight.
- Tough and durable.
- Easy to install.
- Base fixes to ground.
- Self rights itself after a collision.

Adhesive Pads:

Thickness: 2mm

Diameter: 260mm

Max Temperature: 30°C

Min Temperature: 5°C

Sleeve:

- Micro Prismatic Retro-Reflective PVC Sheeting.

Standards:

- Conforms to requirements of **BSEN13422**
- Chapter 8 - The Traffic Signs Manual
- The Red Book 2013
- Traffic Signs Regulations & General Directions



Size 1



Size 2



Size 3

Size 1

Height: 1000mm

Weight: 0.90kg

Size 2

Height: 750mm

Weight: 0.70kg

Size 3

Height: 460mm

Weight: 0.50kg

Cats Eye Base

Height: 50mm

Weight: 1.40kg

Diameter: 275mm

*All weights are approximate



Kingpin

Description:

The Kingpin is a lightweight cylinder that is perfect for managing the direction of traffic. Manufactured to be tough and durable, with little to no maintenance. Can be supplied with anchor-bolts or adhesive pads to secure to the ground.

Features:

- Manufactured from HDPE.
- Variety of colours.
- Lightweight.
- Tough and durable.
- Easy to install.
- Base fixes to ground.

Adhesive Pads:

Thickness: 2 mm

Diameter: 260 mm

Max Temperature: 30 °C

Min Temperature: 5 °C

Sleeve:

- Micro Prismatic Retro-Reflective PVC Sheeting.

Standards:

- Conforms to requirements of **BSEN13422**
- Chapter 8 - The Traffic Signs Manual
- The Red Book 2013
- Traffic Signs Regulations & General Directions



Size 1



Size 2



Size 3

Size 1

Height: 1000 mm

Weight: 0.90 kg

Size 2

Height: 750 mm

Weight: 0.70 kg

Size 3

Height: 460 mm

Weight: 0.50 kg

Cats Eye Base

Height: 50 mm

Weight: 1.40 kg

Diameter: 275 mm

*All weights are approximate



The information given on these sheets is typical of the product depicted it must not be interpreted as a guarantee of individual product performance and/or characteristics. We reserve the right to alter specifications and designs without prior notice. All measurements are in millimetres (mm)

REMA



FM 673547

Flexi Cylinder

Description:

A self-righting Cylinder with little to no maintenance required. Can be supplied with anchor-bolts or adhesive pads to secure to the ground.

Features:

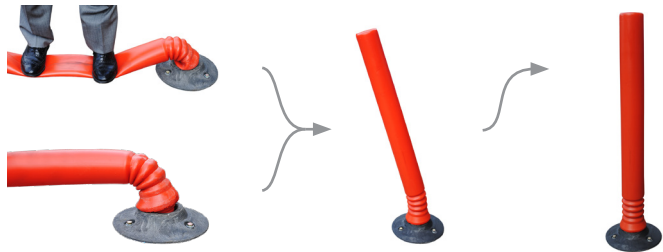
- Flexible LDPE.
- Variety of colours.
- Lightweight.
- Tough and durable.
- Easy to install.
- Base fixes to ground.
- Self rights itself after a collision.

Adhesive Pads:

- Thickness: 2 mm
- Diameter: 260 mm
- Max Temperature: 30 °C
- Min Temperature: 5 °C

Standards:

- Conforms to requirements of **BSEN13422**
- Chapter 8 - The Traffic Signs Manual
- The Red Book 2013
- Traffic Signs Regulations & General Directions



Size 1

Height: 1000 mm
Weight: 0.90 kg

Size 2

Height: 750 mm
Weight: 0.70 kg

Size 3

Height: 460 mm
Weight: 0.50 kg

Cats Eye Base

Height: 50 mm
Weight: 1.40 kg
Diameter: 275 mm



*All weights are approximate

The information given on these sheets is typical of the product depicted it must not be interpreted as a guarantee of individual product performance and/or characteristics. We reserve the right to alter specifications and designs without prior notice. All measurements are in millimetres (mm)

REMA



FM 673547

Ariane Twist-Lock

Description:

Derived from the Ariane XXI, this new version implements the twist-lock mechanism that can be seen on the existing Cylinder range which allows the Cylinder to be locked into the Melba Swintex Cats-Eye Base. Handles have been implemented to allow greater grip for when attaching the Cylinder to its base.

Features:

- Available in a variety of colours.
- Lightweight and durable.
- Easy to install.
- Base fixes to ground.
- Handle grips for easy twist to lock manoeuvre.
- Corporate identification can be embossed.

Standards:

- Chapter 8 - The Traffic Signs Manual
- The Red Book 2013
- Traffic Signs Regulations & General Directions
- UNE 135363



Handles



Cats Eye Base



Coloured



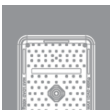
Height:	750 mm
Width:	200 mm
Weight:	1.14 kg
Base Weight:	1.4 kg

*All weights are approximate

The information given on these sheets is typical of the product depicted it must not be interpreted as a guarantee of individual product performance and/or characteristics. We reserve the right to alter specifications and designs without prior notice. All measurements are in millimetres (mm)



FM 673547



Ramps

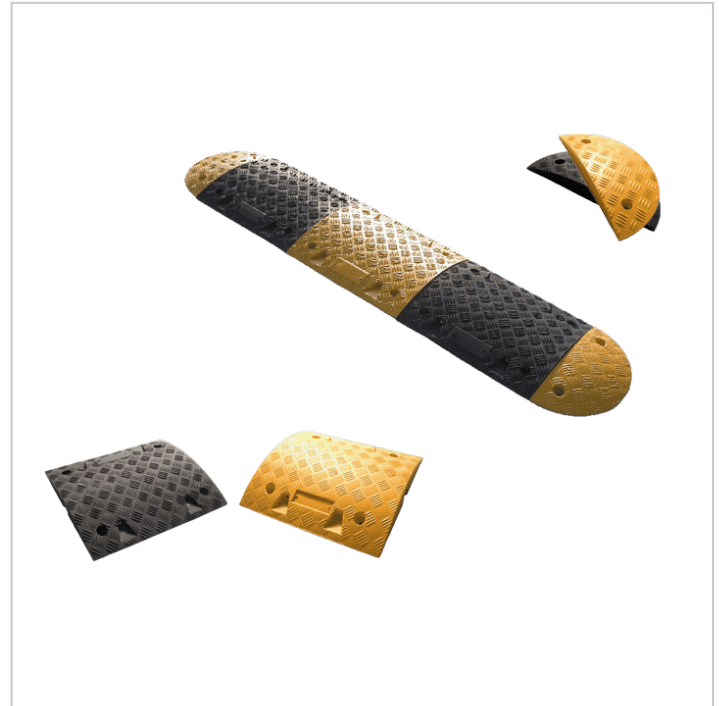
Melba

Description:

The Melba Ramp enables traffic calming when required. Supplied with built in cats eyes.

Features:

- Heavy duty recyclable PVC segments.
- Range of heights and sizes to suit all speed restrictions.
- Bolt to floor fixing.
- Cats eye.
- Chequered pattern for extra grip.



50 mm Ramp

Height:	50 mm
Depth:	425 mm
Width:	500 mm
Weight:	7.80 kg
End Cap Length:	210 mm
End Cap Weight:	2.20 kg
Cats Eye:	White
Bolt Size:	M10
Recommended Speed:	15 mph

75 mm Ramp

Height:	75 mm
Depth:	465 mm
Width:	500 mm
Weight:	10.50 kg
End Cap Length:	235 mm
End Cap Weight:	3.50 kg
Cats Eye:	White
Bolt Size:	M10
Recommended Speed:	10 mph



*All weights are approximate

The information given on these sheets is typical of the product depicted it must not be interpreted as a guarantee of individual product performance and/or characteristics. We reserve the right to alter specifications and designs without prior notice. All measurements are in millimetres (mm)



FM 673547

Miniramp

Description:

The Miniramp is the smallest ramp in the Melba Swintex range, and enables traffic calming when required.

Features:

- Heavy duty recyclable PVC segments.
- Bolt to floor fixing.
- Cats eye.



Cats Eye



25 mm Ramp

Height:	25 mm
Depth:	400 mm
Width:	500 mm
Weight:	4.50 kg
End Cap Length:	200 mm
End Cap Weight:	1.30 kg
Reflective Strips:	Red/White
Cats Eye Strips:	Yes (22)
Reflective:	Red/White
Bolt Fixing:	Yes
Bolt Size:	M10x16



*All weights are approximate

The information given on these sheets is typical of the product depicted it must not be interpreted as a guarantee of individual product performance and/or characteristics. We reserve the right to alter specifications and designs without prior notice. All measurements are in millimetres (mm)



FM 673547

Kerb Buddy

Description:

The Kerb Buddy is a blow moulded Footway Ramp manufactured from High Density Polyethylene. The Kerb Buddy boasts great strength and durability, and provides easy access to varied street level utility works. A highly effective Anti-slip pattern ensures safety and comfort.

Features:

- 4 fixing holes. Can be bolted to the ground.
- Efficient anti-slip pattern.
- Low edges for anti-trip.
- High rise sides to prevent falls.
- 180° Stacking.
- Able to withstand over 250 kg.
- Handles for easy lifting.
- Company identification can be embossed.
- Manufactured in High Density Polyethylene.
- Manufactured in yellow as standard, but can be coloured to suit.
- Product can be recycled.
- High impact resistance (Does not shatter).

Standards:

- Conforms to **National Grid T/SP/E/42**
- A Code of Practice 2013



Embossed

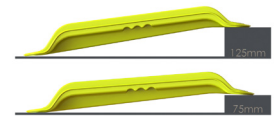


Anti-Slip



Stacking

The Ramp is designed to sit comfortably when placed on various kerb heights.
Min 75 mm, Max 125 mm.



Width:	1200 mm
Wall Height:	90 mm
Depth:	985 mm
Weight:	8 kg

*All weights are approximate

The information given on these sheets is typical of the product depicted it must not be interpreted as a guarantee of individual product performance and/or characteristics. We reserve the right to alter specifications and designs without prior notice. All measurements are in millimetres (mm)



FM 673547

Hose Cover

Description:

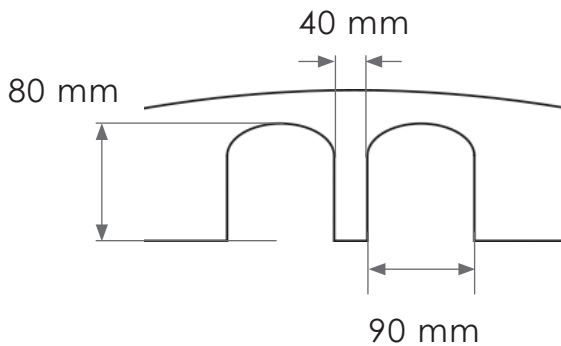
The Hose Cover is our biggest ramp that can fit over large cables and pipes.

It's tough structure provides the resistance to heavy loads.

The Hose Cover is primarily manufactured in either Black or Yellow, however, other colours can be ordered. Minimum order applies.

Fixing Options:

The Hose Cover can be fixed to the ground using four bolts per part.



Hose Cover



Fixing Bolt



Weight:

25.50 kg

Height:

100 mm

Width:

790 mm

Length:

500 mm

*All weights are approximate

The information given on these sheets is typical of the product depicted it must not be interpreted as a guarantee of individual product performance and/or characteristics. We reserve the right to alter specifications and designs without prior notice. All measurements are in millimetres (mm)



FM 673547

Access

Description:

The access ramps provides an easy means to avoid curbs.

Tough and durable for a range of vehicles.

Manufactured in recyclable PVC.



Easy Access



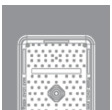
Height:	110 mm
Width:	490 mm
Weight:	7.50 kg

Not designed for Wheelchair use
***All weights are approximate**

The information given on these sheets is typical of the product depicted it must not be interpreted as a guarantee of individual product performance and/or characteristics. We reserve the right to alter specifications and designs without prior notice. All measurements are in millimetres (mm)



FM 673547



Verge Posts

Springbac

Description:

Springbac Post is a unique design which allows the post to right itself when a collision has occurred. It's strong structure prevents damage to the post. No maintenance required.

Features:

- Available with class 1 or class 2 reflectivity.
- Feature maximum permitted reflective area i.e. 180 cm².
- Springbac is manufactured from Polypropylene modified with an Elastomer to provide excellent impact resistance even at very low temperatures.

Standards:

- Reflectivity requirements of **BSEN12899-1**
- Traffic Signs Regulations & General Directions



Front



Back



Height:	1400 mm
	Approx 950 mm above ground
Weight:	3.00 kg

*All weights are approximate

The information given on these sheets is typical of the product depicted it must not be interpreted as a guarantee of individual product performance and/or characteristics. We reserve the right to alter specifications and designs without prior notice. All measurements are in millimetres (mm)



FM 673547

Ecopost

Description:

- Complies fully with traffic sign regulations.
- Available with class 1 or class 2 reflectivity.
- Feature maximum permitted reflective area i.e. 180 cm².
- Ecopost is manufactured from 100% recyclable material, offering a durable post of considerable strength which requires no maintenance.
- 12 mm HDPE rod supplied for fixing into the ground.

Standards:

- Reflectivity requirements of **BSEN12899-1**
- Traffic Signs Regulations & General Directions



Front



Back



Height:

1 400 mm

Width:

100 mm

Depth:

30 mm

Weight:

3.60 kg

Approx 950 mm above ground

**All weights are approximate*

The information given on these sheets is typical of the product depicted it must not be interpreted as a guarantee of individual product performance and/or characteristics. We reserve the right to alter specifications and designs without prior notice. All measurements are in millimetres (mm)



FM 673547



Event Management



Boss Barrier

Description:

The Boss Barrier is an innovative approach to managing busy public areas, such as festivals, marathons, and events. The barrier is manufactured from recyclable blow moulded High Density Polyethylene, which boasts incredible durability and strength.

Features:

- Free standing with 360° swivel feet.
- Barrier can be colour coded.
- No sharp edges.
- Reduced theft.
- Completely recyclable.
- Free from screws and rivets.
- Feet can be coloured to suit.
- Barrier to barrier connection is quick and easy for use on uneven ground.
- Information sign can be attached.
- Company identification can be embossed.
- Manufactured from virgin HDPE.
- Enhanced product support using Retro-Fit braces.



Cross Brace



Coloured



Width:	2000 mm
Height:	1100 mm
Depth:	50 mm
Weight:	9.90 kg

*All weights are approximate

The information given on these sheets is typical of the product depicted it must not be interpreted as a guarantee of individual product performance and/or characteristics. We reserve the right to alter specifications and designs without prior notice. All measurements are in millimetres (mm)



FM 673547



Bases

Fence Base MKII

Description:

A one piece compression moulded fencing foot, manufactured from recycled material. The base is completely recyclable, boasting high durability and strength. Designed to take Ø38.2 mm posts, the base ensures a secure and stable foundation for all standard fencing barricades. The product is a single man lift, with specially designed handles either side, which allows carrying with ease.

Features:

- Manufactured from recycled PVC.
- Handles at either side for easy lifting.
- One man lift at 18 kg.
- Two slots for Fork lift entry.
- 6 location points for fence posts.
- Bases stack with each other.
- Company identification can be embossed.



Yellow Ends



Fence Foot



Width:	210 mm
Height:	135 mm
Length:	750 mm
Weight:	18 kg

*All weights are approximate

The information given on these sheets is typical of the product depicted it must not be interpreted as a guarantee of individual product performance and/or characteristics. We reserve the right to alter specifications and designs without prior notice. All measurements are in millimetres (mm)



FM 673547

Anti-Trip Foot

Description:

The Anti-Trip Foot is designed to prevent stumbles and falls around utility work areas. Unlike standard feet, the foot does not protrude into walkways, or where there is public access.

Features:

- Foot can be coloured to suit.
- Manufactured from recycled material.
- Completely recyclable.
- No protrusion into walkways.
- 360° movement.

Standards:

- Conforms to requirements of **BSEN13422**
- Chapter 8 - The Traffic Signs Manual
- The Red Book 2013



Gate Barrier

Vision Barrier

Coloured



Width:	480 mm
Height:	185 mm
Depth:	50 mm
Weight:	2.10 kg

*All weights are approximate

The information given on these sheets is typical of the product depicted it must not be interpreted as a guarantee of individual product performance and/or characteristics. We reserve the right to alter specifications and designs without prior notice. All measurements are in millimetres (mm)



FM 673547

Standard Foot

Description:

The Standard Foot is the most common foot for the Melba Swintex Barrier range. It is well established as one of the most recognisable Barrier Feet available in the industry, and ensures a stable Barrier system.

Features:

- Foot can be coloured to suit.
- Manufactured from recycled material.
- Completely recyclable.
- 360° movement.
- Allows barriers to stack.

Standards:

- Conforms to requirements of **BSEN13422**
- Chapter 8 - The Traffic Signs Manual
- The Red Book 2013



Gate Barrier

Vision Barrier

Master Barrier



Width:	660 mm
Height:	185 mm
Depth:	50 mm
Weight:	2.80 kg

*All weights are approximate

The information given on these sheets is typical of the product depicted it must not be interpreted as a guarantee of individual product performance and/or characteristics. We reserve the right to alter specifications and designs without prior notice. All measurements are in millimetres (mm)



FM 673547

Tuff Foot

Description:

A modified version of the Standard Barrier Foot. Twice the size, twice the weight, improving stability, which results in greater wind resistance. At 5 kg per foot, a more stable setup is achieved.

Features:

- Improved strength.
- Added weight for improved stability.
- Larger footprint.
- Foot can be coloured to suit.
- Manufactured from recycled material.
- Completely recyclable.

Standards:

- Conforms to requirements of **BSEN13422**
- Chapter 8 - The Traffic Signs Manual
- The Red Book 2013



Tuff Barrier



Vision Barrier



Width:	660 mm
Height:	185 mm
Depth:	100 mm
Weight:	5.00 kg

*All weights are approximate

The information given on these sheets is typical of the product depicted it must not be interpreted as a guarantee of individual product performance and/or characteristics. We reserve the right to alter specifications and designs without prior notice. All measurements are in millimetres (mm)



FM 673547

Tuff-AT Foot

Description:

The Tuff-AT Foot is a modified version of the Anti-Trip Barrier Foot. The Foot is designed to prevent stumbles and falls around utility work areas. Unlike standard feet, the foot does not protrude into walkways, or where there is public access. Twice the size of the Anti-Trip Foot, stability is improved greatly, which results in a much higher wind resistance.

Features:

- Improved strength.
- Added weight for improved stability.
- Larger footprint.
- Foot can be coloured to suit.
- Manufactured from recycled material.
- Completely recyclable.
- Can be embossed with corporate branding.
- Prevents a trip hazard on pathways.

Standards:

- Conforms to requirements of **BSEN13422**
- Chapter 8 - The Traffic Signs Manual
- The Red Book 2013



Olympic



Vision Barrier



Width:	480 mm
Height:	185 mm
Depth:	100 mm
Weight:	4.80 kg

*All weights are approximate

The information given on these sheets is typical of the product depicted it must not be interpreted as a guarantee of individual product performance and/or characteristics. We reserve the right to alter specifications and designs without prior notice. All measurements are in millimetres (mm)



FM 673547

28kg Footplate

Description:

A heavy duty Base that supplies a weight of 28 kg of stability to various applications. 5 location holes all sized respectively to corresponding posts provide secure anchorage for a variety of temporary road works.

Features:

- Bases stack with one another.
- 4 handle areas to ease lifting.
- Large Battery compartment with drainage hole.
- Manufactured from completely recycled material.
- Can be embossed with Corporate Branding.
- Compatible with various popular guiding Beacon.

Hole Sizes:

- Ø45 mm x 2
- Ø43 mm
- 41 mm x 41 mm
- 42 mm x 42 mm
- Ø53 mm
- Ø30 mm

Standards:

- In Accordance to TL Installation Device K1.



Width:	895 mm
Height:	130 mm
Depth:	440 mm
Weight:	28 kg

*All weights are approximate

The information given on these sheets is typical of the product depicted it must not be interpreted as a guarantee of individual product performance and/or characteristics. We reserve the right to alter specifications and designs without prior notice. All measurements are in millimetres (mm)



FM 673547

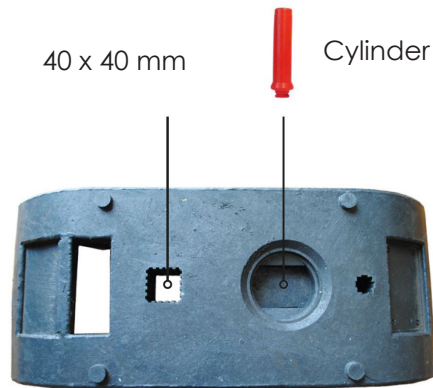
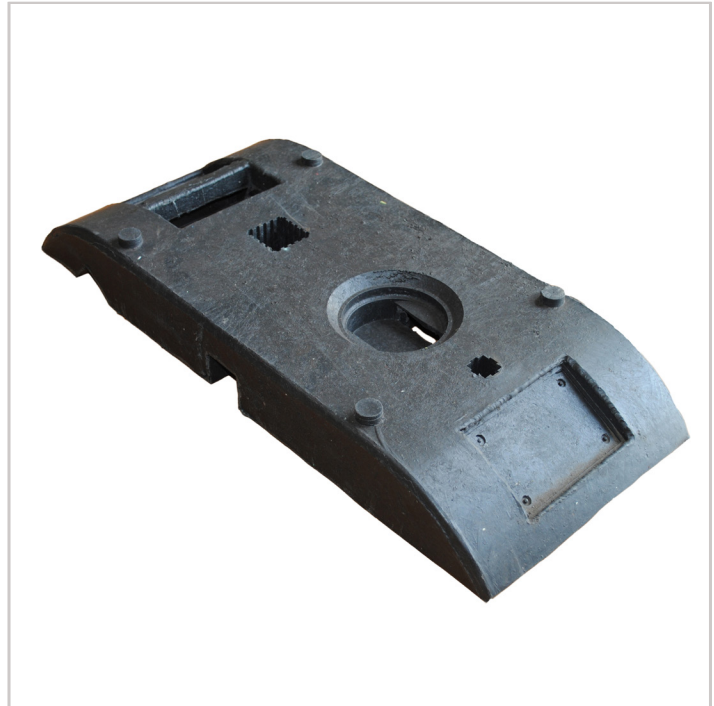
Panolest Base

Description:

The Panolest Base is manufactured from 100% recycled material, and can be completely recycled. The base can take a standard Melba Swintex Cylinder, with a twist-to-lock feature, a large rectangular post, a small rectangular post, and can be used as a cable protector. The base can stack, doubling up on itself in weight. A single man lift is required, with a simple handle allowing an easy to carry product. The base is moulded in black as standard, but can be coloured to suit.

Features:

- Completely Recyclable.
- Takes a Cylinder.
- Can Stack.
- Can be Coloured to Suit.
- Takes 2 Rectangular Posts.
- Handle for Easy Lifting.
- Cable Protection.
- Single Man Lift.
- Robust & Durable.



Width:	250 mm
Height:	70 mm
Length:	585 mm
Weight:	10 kg

*All weights are approximate

The information given on these sheets is typical of the product depicted it must not be interpreted as a guarantee of individual product performance and/or characteristics. We reserve the right to alter specifications and designs without prior notice. All measurements are in millimetres (mm)



FM 673547

Road Rock

Description:

The Road Rock is a multifunctional base and the first product of its kind that will allow a temporary pedestrian barrier to pass Class B Wind Speeds (17.6 m/s) by providing the precise weight needed each time, using two Road Rocks. When the barriers are in a boxed formation, only a single Road Rock is needed per barrier to pass Class B. Use of the Road Rock removes the need for sandbag filled ballasts, therefore resulting in a cleaner area of works.

The Road Rock has a hook and tail connection similar to that seen on the Road Runner, this makes it possible to create a continuous run and implement the base as a delineator. A cavity within the centre of the Road Rock allows a twist-to-lock cylinder to be attached.

The Road Rock has the ability to be embossed with a corporate logo, the design enables the base to stack, and at 15 kg in weight, the Road Rock is manufactured from 100% recycled PVC, which is also 100% recyclable.



Features:

- Corporate ID can be embossed.
- Interlocking for continuous runs.
- Can be coloured to suit.
- Fits all Melba Swintex Barriers.
- No sandbags required for Class B & C.
- Angular movement on interlocking.
- Can house a Traffic Cylinder.
- Can double-up as a Delineator.
- Handle for easy lifting.
- Manufactured from 100% Recycled Material.
- Product can stack.



Width:	315 mm
Height:	308 mm
Length:	500 mm
Weight:	15 kg

*All weights are approximate

The information given on these sheets is typical of the product depicted it must not be interpreted as a guarantee of individual product performance and/or characteristics. We reserve the right to alter specifications and designs without prior notice. All measurements are in millimetres (mm)



FM 673547

Wind Speeds

A minimum of 30 kg is needed for a barrier to withstand Class B Wind Speeds (17.6 m/s). At 15 kg each, the Road Rock provides the precise weight needed, every time, to withstand these wind speeds.

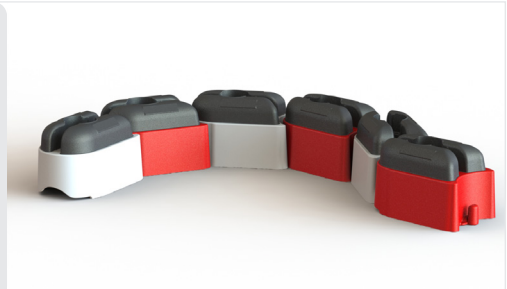


Cylinder Housing

The Road Rock has the facility to fit a Melba Swintex traffic Cylinder. Incorporating the twist-to-lock mechanism regularly seen with the Cats Eye Base, it is possible to attach an existing Melba Swintex Cylinder to the Road Rock. All three sizes (50 cm, 75 cm, and 1 m) can be attached.

Interlocking Tail

Sharing similarities with the Melba Swintex Road Runner, the Road Rock has a strengthened tail that allows a run of Road Rock bases to be connected together. A curved front and back face allow angular movement, which make it possible to flow around corners and bends.



Defiance Base

Description:

A self-righting Cylinder with little to no maintenance required. A simple twist-to-lock feature securely connects the Cylinder to its heavy duty Base.

Features:

- Manufactured from recyclable HDPE.
- Variety of colours.
- Lightweight.
- Tough and durable.
- Easy to install.
- Self rights itself after a collision.
- Weighted base prevents movement.

Sleeve:

- Micro Prismatic Retro-Reflective PVC Sheeting.

Standards:

- Conforms to requirements of **BSEN8442**
- Reflectivity requirements of **BSEN12899-1**
- Chapter 8 - The Traffic Signs Manual
- The Red Book 2013
- Traffic Signs Regulations & General Directions



Base Width:	570 mm
Height:	820 mm
Weight:	8.70 kg

*All weights are approximate

The information given on these sheets is typical of the product depicted it must not be interpreted as a guarantee of individual product performance and/or characteristics. We reserve the right to alter specifications and designs without prior notice. All measurements are in millimetres (mm)



Cats Eye Base

Description:

A one piece compression moulded base, manufactured from recycled material. The base is completely recyclable, boasting high durability and strength. The cylinder attaches to the base via a twist-to-lock mechanism.

Compatibility:

- Kingpin
- Swinbac
- Ariane Twist-Lock

Fixing Options:

- Bolted down using fixing bolts supplied.
- Adhesive pads.

NB. Please state intended fixing method when ordering.

Adhesive Pads:

Thickness: 2 mm

Diameter: 260 mm

Max Temperature: 30 °C

Min Temperature: 5 °C



Knockover



Swinbac



Ariane



Diameter:	270 mm
Height:	55 mm
Weight:	1.42 kg

*All weights are approximate

The information given on these sheets is typical of the product depicted it must not be interpreted as a guarantee of individual product performance and/or characteristics. We reserve the right to alter specifications and designs without prior notice. All measurements are in millimetres (mm)



FM 673547



Litter Bins

Falcon

Description:

A rotationally moulded polyethylene litter bin, featuring modern styling and decorative band.

Fixing Options:

- Bolted down using fixing bolts supplied.
- Base may be ballasted

NB Please send intended fixing method when ordering.

Materials:

Manufactured from Polyethylene.

Liner:

Metal or Plastic liner available.

Additional:

Lock can be added if requested.
Can be personalised with brand or logo.



Non standard colours available to minimum order quantities



Height:	800 mm
Diameter:	500 mm
Capacity:	90 litres
Weight:	10.80 kg

*All weights are approximate

The information given on these sheets is typical of the product depicted it must not be interpreted as a guarantee of individual product performance and/or characteristics. We reserve the right to alter specifications and designs without prior notice. All measurements are in millimetres (mm)



FM 673547

Merlin

Description:

Stylish modern design featuring unique bayonet fixing/locking mechanism to combine ease of emptying with maximum security.

Fixing Options:

- Bolted down using fixing bolts supplied.
- Base may be concreted into the ground.
- Base may be ballasted.

NB. Please state intended fixing method when ordering.

Materials:

Manufactured from Polyethylene.

Liner:

Metal or Plastic liner available.

Additional:

Lock can be added if requested.
Can be personalised with brand or logo.



With Ashtray



Non standard colours available to minimum order quantities

Height:	1000 mm
Diameter:	490 mm
Capacity:	90 litres
Weight:	12.50 kg

*All weights are approximate



The information given on these sheets is typical of the product depicted it must not be interpreted as a guarantee of individual product performance and/or characteristics. We reserve the right to alter specifications and designs without prior notice. All measurements are in millimetres (mm)

REMA



FM 673547

Osprey

Description:

Large capacity post or wall mounted litter bin with *lockable lid. Also available in an open topped version.

*All lockable Swintex bins are opened with the same key.

Fixing Options:

- Banded onto post.
- Mounted onto wall.

(Universal fixing brackets incorporated into bin)

Materials:

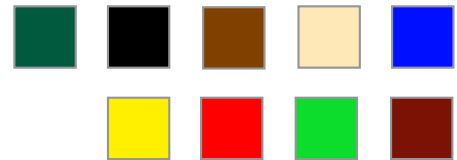
Manufactured from Polyethylene.

Liner:

Metal or Plastic liner available.

Additional:

Lock can be added if requested.
Can be personalised with brand or logo.



Non standard colours available to minimum order quantities



Height:	530 mm (730 mm Lidded)
Diameter:	390 mm
Capacity:	40 litres
Weight:	6.55 kg

*All weights are approximate

The information given on these sheets is typical of the product depicted it must not be interpreted as a guarantee of individual product performance and/or characteristics. We reserve the right to alter specifications and designs without prior notice. All measurements are in millimetres (mm)



FM 673547

Darcy

Description:

The Darcy boasts a bespoke key-less locking mechanism which alleviates the need for additional keys. Align the top with the base correctly and twist to release.

Fixing Options:

- Bolted down using fixing bolts supplied.
- Base may be concreted into the ground.
- Base may be ballasted.

NB. Please state intended fixing method when ordering.

Materials:

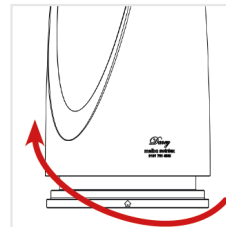
Manufactured from Polyethylene.

Liner:

Metal or Plastic liner available.

Additional:

Lock can be added if requested.
Can be personalised with brand or logo.



Key-less Entry



Non standard colours available to minimum order quantities

Height:	1050 mm
Diameter:	550 mm
Capacity:	90 litres
Weight:	12.80 Kg

*All weights are approximate



The information given on these sheets is typical of the product depicted it must not be interpreted as a guarantee of individual product performance and/or characteristics. We reserve the right to alter specifications and designs without prior notice. All measurements are in millimetres (mm)

REMA



FM 673547

Doggy Bin

Description:

The Melba Swintex Doggy bin is specifically designed to make the disposal of dog waste as hygienic and simple as possible.

Fixing Options:

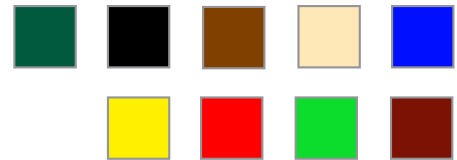
- Post Mounted.
(Post available if required)
- Wall Mounted.

Features:

- Dual position lid self-closing in normal use, stays upright for emptying.
- Deodorizing block in lid.
- Heavy duty red polythene sack, together with galvanised metal liner.
- 3 inch diameter post available if required

Materials:

Manufactured from Polyethylene.



Non standard colours available to minimum order quantities



Height:	550 mm
Diameter:	390 mm
Capacity:	40 litres
Weight:	4.80 kg

*All weights are approximate

The information given on these sheets is typical of the product depicted it must not be interpreted as a guarantee of individual product performance and/or characteristics. We reserve the right to alter specifications and designs without prior notice. All measurements are in millimetres (mm)



FM 673547

Copperfield

Description:

Designed to combine traditional styling with all the benefits of UV Stabilised polyethylene.

Fixing Options:

- Bolted down using fixing bolts supplied.
- Base may be concreted into the ground.
- Base may be ballasted.

NB. Please state intended fixing method when ordering.

Materials:

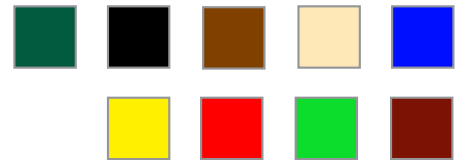
Manufactured from Polyethylene.

Liner:

Metal or Plastic liner available.

Additional:

Lock can be added if requested.
Can be personalised with brand or logo.



Non standard colours available to minimum order quantities



Height:	990 mm
Diameter:	485 mm
Capacity:	90 litres
Weight:	12.40 kg

*All weights are approximate

The information given on these sheets is typical of the product depicted it must not be interpreted as a guarantee of individual product performance and/or characteristics. We reserve the right to alter specifications and designs without prior notice. All measurements are in millimetres (mm)



FM 673547

Pickwick

Description:

Victoriana design in an inexpensive, easy to empty bin.

Fixing Options:

- Bolted down using fixing bolts supplied.
- Base may be ballasted.

NB. Please state intended fixing method when ordering.

Materials:

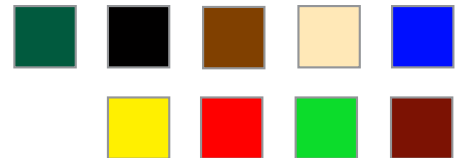
Manufactured from Polyethylene.

Liner:

Metal or Plastic liner available.

Additional:

Lock can be added if requested.
Can be personalised with brand or logo.



Non standard colours available to minimum order quantities



Height:	800 mm
Diameter:	450 mm
Capacity:	90 litres
Weight:	10.30 kg

*All weights are approximate

The information given on these sheets is typical of the product depicted it must not be interpreted as a guarantee of individual product performance and/or characteristics. We reserve the right to alter specifications and designs without prior notice. All measurements are in millimetres (mm)



FM 673547

Nickleby

Description:

Large capacity post/wall mounted litter bin with lockable lid in traditional antique styling to compliment the Copperfield.

Fixing Options:

- Banded onto post.
- Mounted onto wall.

(Universal fixing bracket incorporated into bin)

Materials:

Manufactured from Polyethylene.

Liner:

Metal or Plastic liner available.

Additional:

Lock can be added if requested.
Can be personalised with brand or logo.



Non standard colours available to minimum order quantities



Height:	540 mm (740 mm Lidded)
Diameter:	390 mm
Capacity:	40 litres
Weight:	6.70 kg

*All weights are approximate

The information given on these sheets is typical of the product depicted it must not be interpreted as a guarantee of individual product performance and/or characteristics. We reserve the right to alter specifications and designs without prior notice. All measurements are in millimetres (mm)

REMA



FM 673547

Byron

Description:

The Byron is an unobtrusive, attractive bin that can be placed either inside or out.

Top Options:

- Ashtray c/w multi-holed insert
- Ashtray
- Ashtray c/w single-holed insert
- Plain domed top
- Steel rim

Materials:

Manufactured from Polyethylene.

Liner:

Metal or Plastic liner available.

Additional:

Can be personalised with brand or logo.
Litter Man image can be added if desired.



Non standard colours available to minimum order quantities



Height:	770 mm
Diameter:	330 mm
Capacity:	40 litres
Weight:	4.10 kg

*All weights are approximate

The information given on these sheets is typical of the product depicted it must not be interpreted as a guarantee of individual product performance and/or characteristics. We reserve the right to alter specifications and designs without prior notice. All measurements are in millimetres (mm)



FM 673547

Shelley

Description:

The Shelley provides waste disposal either indoor or out.

Top Options:

- Plain domed top
- Steel rim

Materials:

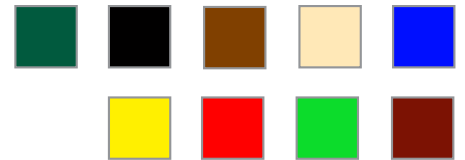
Manufactured from Polyethylene.

Liner:

Metal or Plastic liner available.

Additional:

Can be personalised with brand or logo.
Litter Man image can be added if desired.



Non standard colours available to minimum order quantities



Height:	520 mm
Diameter:	330 mm
Capacity:	40 litres
Weight:	3.20 kg

*All weights are approximate

The information given on these sheets is typical of the product depicted it must not be interpreted as a guarantee of individual product performance and/or characteristics. We reserve the right to alter specifications and designs without prior notice. All measurements are in millimetres (mm)



FM 673547

Oil Drum Converter

Description:

The Oil Drum Converter transforms the typical 45 Gallon drum into a waste bin. Ideal for activities such as festivals and events.

Specification:

- Fits a 500 mm Diameter Drum
- 3 Access points for Waste

Materials:

Manufactured from Polyethylene.



Black



Non standard colours available to minimum order quantities



Diameter:	500 mm
Access:	3 points
Weight:	4.00 kg

*All weights are approximate

The information given on these sheets is typical of the product depicted it must not be interpreted as a guarantee of individual product performance and/or characteristics. We reserve the right to alter specifications and designs without prior notice. All measurements are in millimetres (mm)



FM 673547



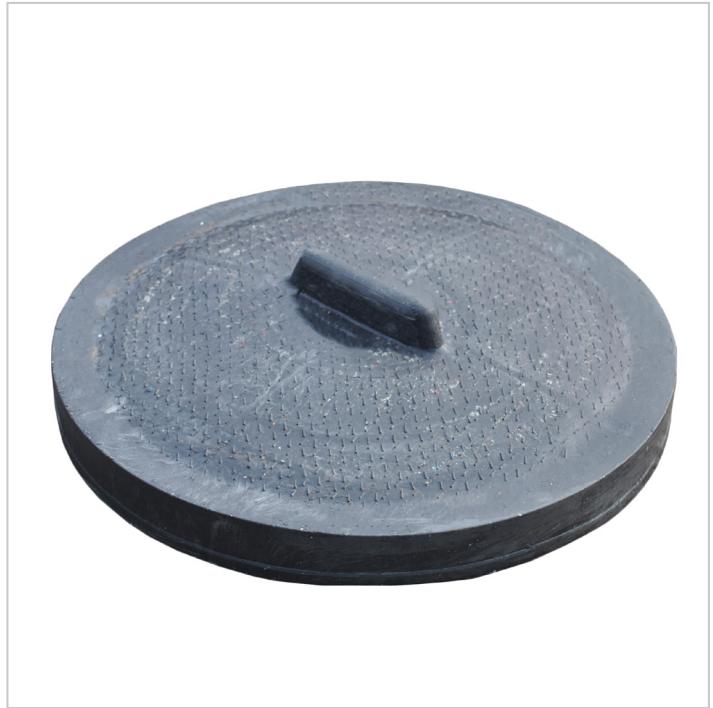
Miscellaneous



Bin Lid

Description:

The Bin Lid by Melba Swintex is manufactured from recycled PVC, comes with a handle, and is designed to fit an 18 inch container. A slightly domed surface prevents any collection of rain water.



Diameter:	457 mm
Weight:	2.20 kg

**All weights are approximate*

The information given on these sheets is typical of the product depicted it must not be interpreted as a guarantee of individual product performance and/or characteristics. We reserve the right to alter specifications and designs without prior notice. All measurements are in millimetres (mm)



FM 673547

Buckets

Description:

Melba Swintex offer two extremely tough and versatile buckets, able to withstand high impacts and rough handling, which make them the perfect choice for use in the construction industry. Manufactured from recycled PVC, the bucket is available in either a 2 Gallon, or 3 Gallon capacity. Complete with a handle and spout.



2 Gallon



3 Gallon

2 Gallon	
Diameter:	300 mm
Height:	230 mm
Weight:	2.00 kg
3 Gallon	
Diameter:	335 mm
Height:	300 mm
Weight:	2.60 kg



*All weights are approximate

The information given on these sheets is typical of the product depicted it must not be interpreted as a guarantee of individual product performance and/or characteristics. We reserve the right to alter specifications and designs without prior notice. All measurements are in millimetres (mm)



FM 673547

Barrier Wind Resistance

Tested at 

All temporary traffic barriers must be able to withstand three different classes of wind speeds with the use of a ballast. The standard **BS 8442:2015** states the three classes as the following:

- Class A: 26.3 m/s (58 mph)**
- Class B: 17.6 m/s (39 mph)**
- Class C: 8.7 m/s (19 mph)**

Below are the results and guides as to the recommended ballast weight for each Wind Class for the Melba Swintex Barriers:

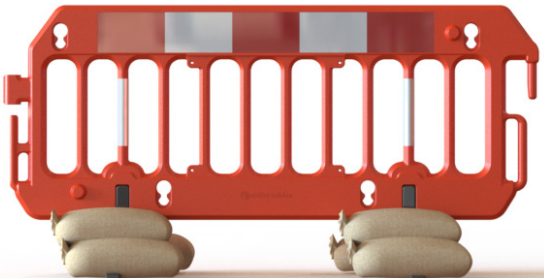
Olympic

Wind Speed Class	Speed Achieved	Rec. Ballast Weight
C	19.9 mph	0 kg
B	46.2 mph	30 kg
A	63.1 mph	80 kg
Boxed	65.4 mph	30 kg



Vision

Wind Speed Class	Speed Achieved	Rec. Ballast Weight
C	19.8 mph	0 kg
B	44.2 mph	30 kg
A	61.8 mph	90 kg
Boxed	63.4 mph	60 kg



Master (Stacca)

Wind Speed Class	Speed Achieved	Rec. Ballast Weight
C	19.3 mph	0 kg
B	44.5 mph	30 kg
A	60.3 mph	90 kg
Boxed	62.1 mph	60 kg



Stacca Mk4

Wind Speed Class	Speed Achieved	Rec. Ballast Weight
C	19.8 mph	0 kg
B	44.2 mph	30 kg
A	61.7 mph	90 kg
Boxed	63.4 mph	60 kg



Gate

Wind Speed Class	Speed Achieved	Rec. Ballast Weight
C	19.4 mph	0 kg
B	42.3 mph	30 kg
A	59.1 mph	90 kg
Boxed	59.4 mph	70 kg



Road Runner

Wind Speed Class	Speed Achieved	Rec. Ballast Weight
C	36 mph	0 kg
B	49 mph	10 kg
A	68 mph	50 kg



WonderWall™

Wind Speed Class	Speed Achieved	Rec. Ballast Weight
C	33.2 mph	0 kg
B	47.8 mph	15 kg
A	65.6 mph	65 kg
Boxed	63.2 mph	40 kg



3 By 2 Rectangle ✔ Passed

Withstood up to 40.1 mph

Recommended Ballast Weight: **0 kg**

WonderWall™ setup in a rectangular formation and connected via the hook & peg, and using the clip on the top fence. Measuring 2mtr by 3mtr.



4 by 1 Row ✔ Passed

Withstood up to 43.3 mph

Recommended Ballast Weight: **0 kg**

WonderWall™ set out in a linear row, with an additional WonderWall attached every 4 barriers at right angles.



Q-Sign Wind Resistance

Tested at



All temporary signs must be able to withstand three different classes of wind speeds with the use of a ballast. The standard **BS 8442:2015** states the three classes as the following:

Class A: 26.3 m/s (58 mph)

Class B: 17.6 m/s (39 mph)

Class C: 8.7 m/s (19 mph)

Below are the results and guides as to the recommended ballast weight for each Wind Class for the Q-Sign range from Melba Swintex:

Class C

Withstood up to 26 mph

Recommended Ballast Weight: **0 kg**



Class B

Withstood up to 42 mph

Recommended Ballast Weight: **10 kg**



Class A

Withstood up to 59 mph

Recommended Ballast Weight: **30 kg**



