

Dual Containment

FT Pipeline Systems is the national technical and distribution centre for dual containment. We are the perfect partner for all your dual containment needs offering solutions for chemical dosing and chemical transportation in both rigid and flexible pipework, with leak detection as standard.



Flexible Dual Containment Chemical Dosing Hose

Internal diameters from 6mm to 50mm. The products come with various material inners such as PVC, LDPE and PTFE to cover resistance of most common chemicals used in dosing such as Sodium Hypochlorite, Ferric and Caustic. Full chemical details are always requested including concentrations to ensure that the product is fully fit for purpose. Full chemical resistance charts are available on request.

ProtectaFlex

- Complete solution available with catchpots. Lightweight and manageable.
- Clear, durable PU outer is UV stable and allows excellent visual inspection.
- Choice of inner hose available: WRAS approved in grey and white.
- Better flexibility and lower bend radius.
- Lower shipping and storage costs.
- Reduced packaging, fully recyclable.

PF-C

- All the benefits of traditional pipe-in-pipe systems with catchpots.
- Long runs available.
- No need for bespoke dual contained fittings, reducing on-costs.
- Containment easy to strip back for installation.
- WRAS approved dosing hoses and material for containment layer.
- Outer containment layer terminated inside catchpots and banded areas.

PF-Detect

- The first leak detectable chemical dosing flexible hose – no catchpot required.
- Further reduces environmental leakage risks.
- Approved by major water and wastewater treatment companies.
- Leak detection system requires only a minimal amount of liquid to trigger the alarm and shut-off procedure.
- Leaked liquid is contained within the versatile polyurethane jacket.



T. +44 (0)1543 416024 enquiries@ftpipelinesystems.co.uk www.ftpipelinesystems.co.uk

ft pipeline systems

Unit 6b Eastern Park Eastern Avenue Lichfield Staffordshire WS13 7SY

Rigid Dual Containment Systems

FT Pipeline Systems offers a choice of rigid dual containment pipe.

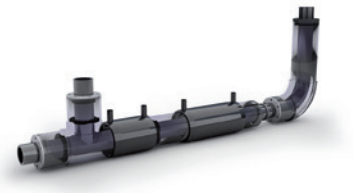
The **Guardian** dual contained 'pipe-in-pipe' system is made from PVC-U material and is available from ½" #2" up to 8" #12". Its key features include:

- Patented Centra-Lok™ system holds fitting in the correct place prior to installation.
- Extremely easy to install – solvent weld jointing for both inner and outer.
- Visual or automated leak detection system available.
- Guardian is ideal for water and waste treatment applications as it allows the safe transportation of different fluids and some chemical concentrates without fear of corrosion and environmental pollution.



SIMODUAL² is available up to 225mm and offers the following features:

- Cost-effective and practical: the unique laying method facilitates safe and simple installation of the entire piping system. Thanks to the integrated anchor points, there is no need for any costly on-site welding work.
- Standardised, all-inclusive system: SIMODUAL² is an easily assembled end-to-end system, including fittings and leak monitoring. The compact design ensures simple handling and installation. Valves and inspection ports are available on request.
- Certified materials: a consistently high standard of safety in the use of materials for SIMODUAL² is guaranteed.



Dosing Pumps

We can supply dosing pumps to work in conjunction with the dual containment hose. The pumps feature flow rates of up to 80 L/H and operating pressures of up to 20 bar. They are available with a wide range of functions and power supplies and can be configured to be compatible with a large number of chemicals.

