

# ARCTIC DRIVER<sup>®</sup>

Under Pressure Ferrule Extraction System

FAST • SAFE • EASY TO USE • COST SAVING  
REDUCED CUSTOMER SUPPLY INTERRUPTIONS

**A WINNER IN EVERY WAY**

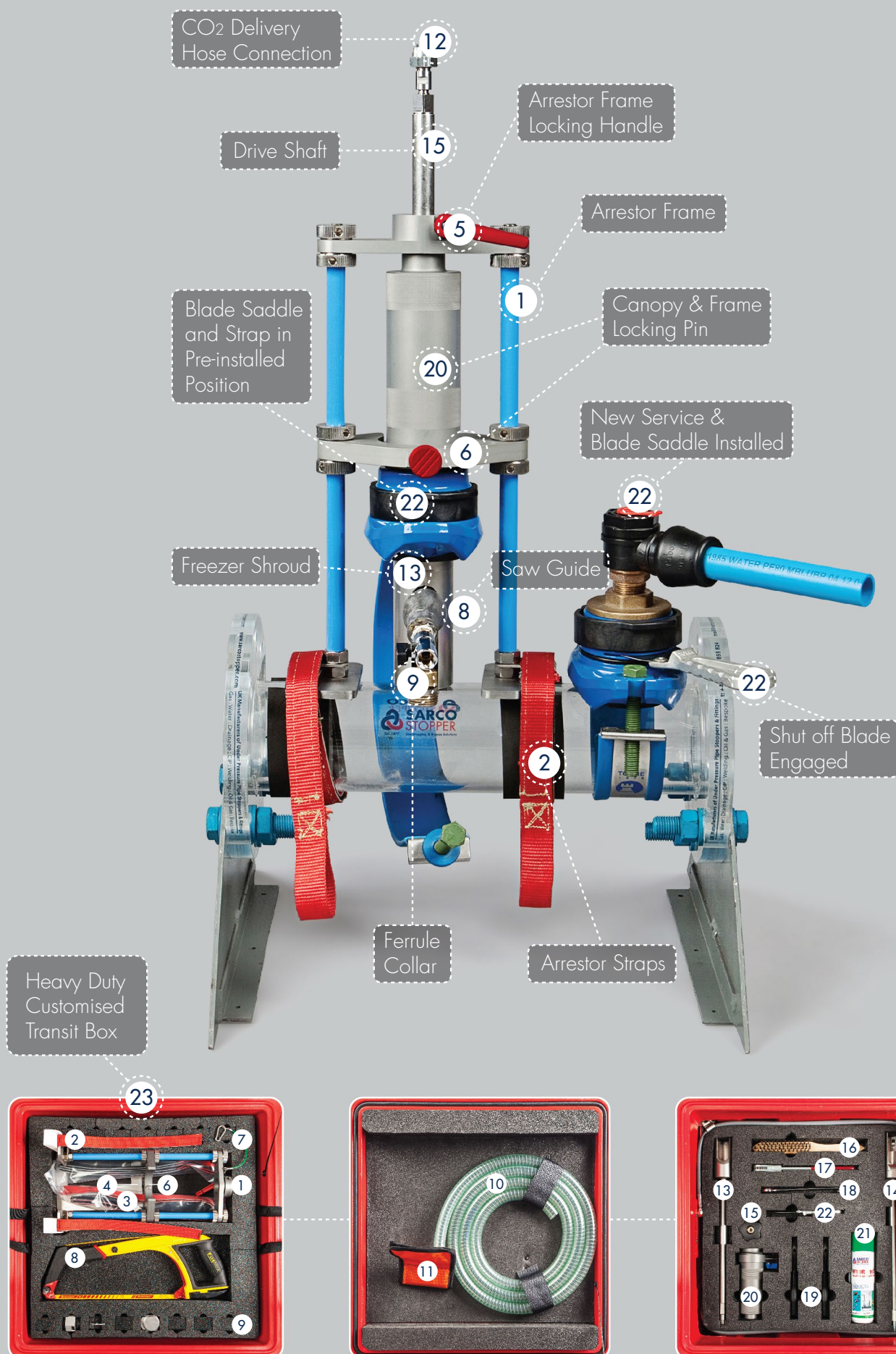


[www.sarcostopper.com](http://www.sarcostopper.com)

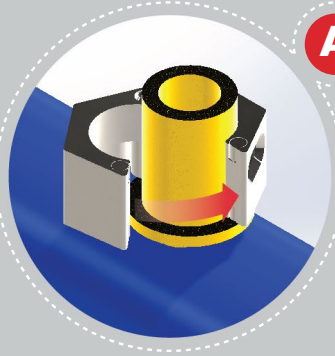


## BSI PRESSURE TESTED & CERTIFIED SYSTEM

Arctic Driver® is a registered trademark of Sarco Stopper Ltd – Patent App No 141349.4-204.

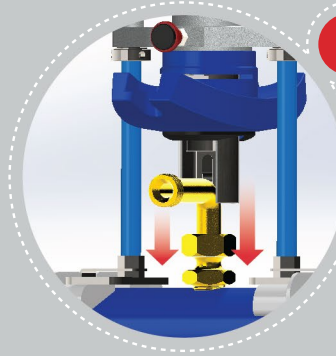


# FERRULE EXTRACTION PROCESS



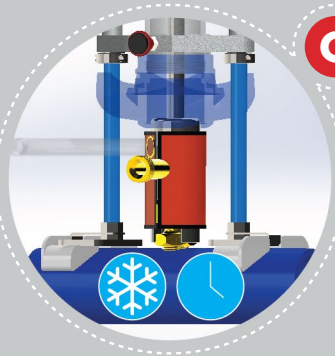
**A**

SELECT AND FIT THE APPROPRIATE COLLAR TO SUIT THE FERRULE 9



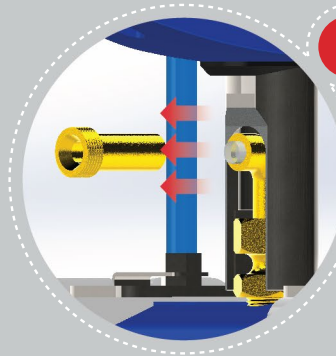
**B**

FIT THE FREEZER SHROUD 13 OVER THE COLLAR AND SECURE ARRESTER FRAME 1 ON TO THE MAIN WITH SPECIAL VELCRO STRAPS 2 HAVING ALREADY PUT IN POSITION ON THE DRIVE SHAFT 15 THE 2" ARCTIC BLADE SADDLE AND ITS FLEXIBLE STRAP OPTIONS 22



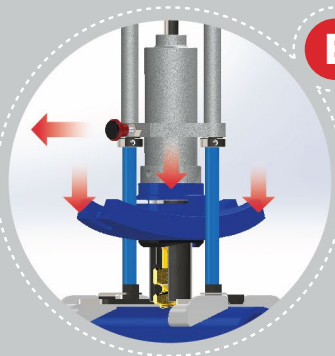
**C**

FIT THE FREEZER JACKET 11 WITH VENT TUBE AND FREEZE USING CO2 GAS SUPPLY FITTED TO THE DRIVE SHAFT FOR 2 – 4 MINUTES. FREEZE LASTS APPROX. 15 MINUTES.



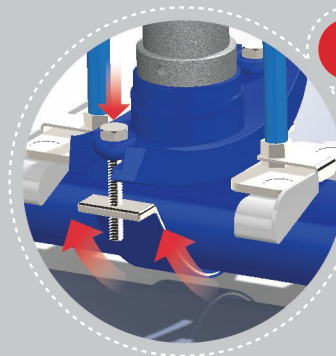
**D**

CUT THE FERRULE FOLLOWING THE SHROUD SAW GUIDE 8 USING THE ANGLED SAW PROVIDED.



**E**

DROP THE BLADE SADDLE 22 AND CANOPY 20 ON TO THE MAIN ENCAPSULATING THE FERRULE BY RELEASING THE LOCKING PIN 6



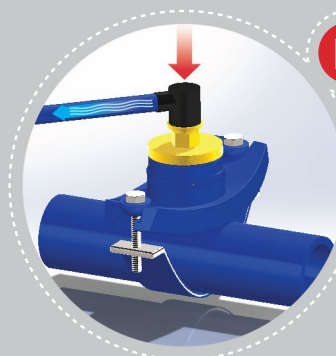
**F**

SECURE THE BLADE SADDLE BY USING THE FLEXIBLE STRAP AND FIXINGS PROVIDED. THE 2" SADDLE FITS ALL PIPES (90-355mm) UTILISING ITS FLEXIBLE STRAP OPTIONS.



**G**

EXTRACT THE FERRULE BY RATCHETING 18 THE DRIVE SHAFT 15 AIDED BY THE USE OF THE PALM HANDLE. THEN USING 'HYDRO 90' SILICONE SPRAY 21 INSERT THE 2" SHUT OFF BLADE 22 AND REMOVE THE ARCTIC DRIVER EQUIPMENT.



**H**

FIT THE NEW FERRULE SERVICE AND REMOVE THE SHUT OFF BLADE 22 CLEAN AND DRY EQUIPMENT PARTS AND PLACE INTO THE CUSTOMISED HEAVY DUTY TRANSIT BOX 23 FOR SAFE AND SECURE STORAGE.



# ARCTIC DRIVER®

The Arctic Driver freezing, extraction and ferrule replacement operation takes no more than 20 minutes. If shut-off "penny ferrules" are encountered there is no requirement to freeze and the job completion time is reduced by approx. 10 minutes.

## OPERATIONAL BENEFITS

- Under pressure removal and/or replacement of an existing ferrule
- Ferrule fully secured throughout the process
- 10 or 20 minute operation
- No additional drilling of the main required
- Maintains the pressure equilibrium of the network
- Uses existing ferrule hole
- One Arctic Driver Saddle fits all pipes (90mm – 355mm) utilising flexible Strap System

## COMMERCIAL BENEFITS (Utilising this under pressure technique)

- No planning costs
- No on site valve operation, drain down and recharge costs
- No customer card warning or compensation costs
- No out of hours working
- No risk of knock on bursts on recharge, discolouration or contamination incidents
- No risk of customer contacts to call centres or DG7 letters of complaint
- No future leakage risk from old capped ferrules

Avoiding the need to shut off and drain down sections of main, water loss through drain down, recharge and potential knock on bursts, (recently tabled at 63% of all network interventions within the following 7 days), the pressure equilibrium of the distribution network is maintained, leading to a more optimal operational status.

FOR FURTHER INFORMATION ON ALL SARCO STOPPER SYSTEMS, PRODUCTS AND SERVICES, CONTACT OUR INTERNAL SALES DEPARTMENT AS DETAILED BELOW:



Brocks Way, East Mains Ind. Est. Broxburn,  
Nr Edinburgh, West Lothian, EH52 5NB, Scotland, UK  
T: +44 (0) 1506 855 824 - F: +44 (0) 1506 855 849

**MANUFACTURERS OF UNDER PRESSURE PIPELINE STOPPERS  
& FITTINGS FOR GAS, OIL, WATER & ENVIRONMENT**