

Complies with 2-minute EDM Reporting Requirements

**Flow Detection
Transducer**

FDT Flow Detection Transducer Transmitters

CSO Event Duration Monitoring

Weir Overflow Detection

Liquid Flow Detection

CSO Spill Reporting

Storm Tank Overflow

Storm Bypass Channel Operation

Emergency Overflow Alarms

Triggering / Controlling Sensors

Flow Verification

Remote Cameras Activation

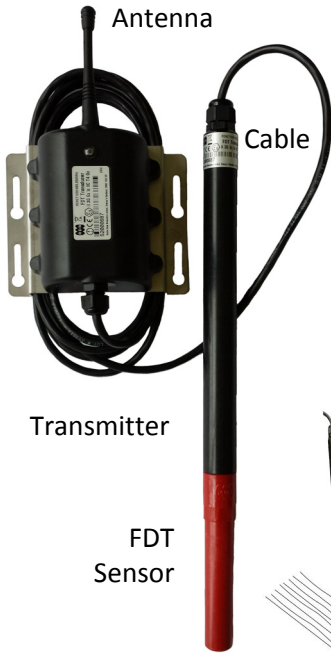
Over Height Vehicle Detection





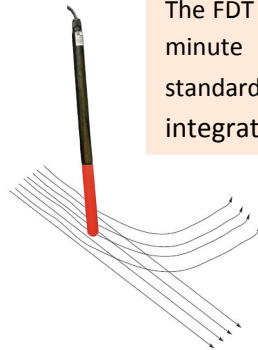
FDT Flow Detection Transducer Transmitters

FDT Flow Detection Transducer Transmitters



Transmitter

FDT Sensor



FDTs operate in any direction

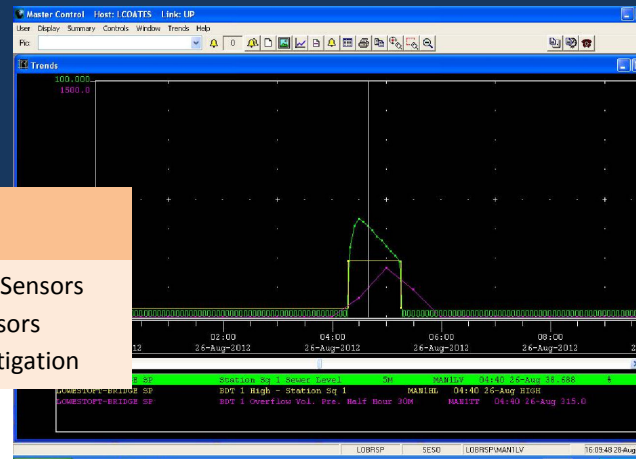
The Flow Detection Transducer (FDT) is a highly popular and proven device for monitoring flow within channels, over weirs and for reporting event duration (EDM) at combined sewer overflows. In EDM applications alone the FDT has accumulated over 15-million hours of service and can deliver live 2-minute data via telemetry.

The FDT employs an array of ultra-low power accelerometers to detect flow in any direction which it converts to a simple Flow/No-Flow Signal. The FDT has been demonstrated to be immune to ragging and FOG. Further it is sealed to IP68 and hence can tolerate 100% submersion without damage.

The FDT is available with a low power 2.5 sec rate wireless up-link or a higher power 1 to 5-minute licenced radio back-link. Simple to install without software or programming, standard features include a status LED, stainless steel wall bracket, 4m cable, integrated delay timer and up to 10-years battery life.

Applications Include:

- CSO / SSO EDM Reporting
- Storm Bypass Channel Monitoring
- Storm Tank Overflow Monitoring
- Cross Calibrating Analogue Level Sensors
- Controlling Battery Powered Sensors
- Real-time Control & Pollution Mitigation



Features Include:

- Meets 2-minute EDM monitoring requirements
- Simple to install without the need for confined space entry
- Sealed to IP68 with 10-year battery life
- Operates in channels up to 10m deep
- ATEX certified for Zone 2 operation (Zone 1 to order)
- UHF licence free or Licenced uplink CE, EN300-220, R&TTE
- 50-500m broadcast radius from below a manhole cover**
- 200m to 5km when mounted above ground**
- Activation status LED
- No software or field programming required

Note ** Version and operating frequency dependant

SCADA Trace



Easy Install



The FDT in Action



- Remote Asset Monitoring
- Radio Telemetry
- Environmental Monitoring
- Energy & Water Sub-Metering
- Water Quality Monitoring
- Sewer & CSO Monitoring
- SCADA & Pump Control
- Temperature & Humidity

www.radio-data-networks.com

The Innovation Farm, Sawbridgeworth Road,
Little Hallingbury, Nr Bishop's Stortford,
Hertfordshire, CM22 7QU, ENGLAND

Tel: +44(0)1279 600 440 6 - Lines
E-mail: sales@radio-data-networks.com

Issue 4.0 Copyright 2015