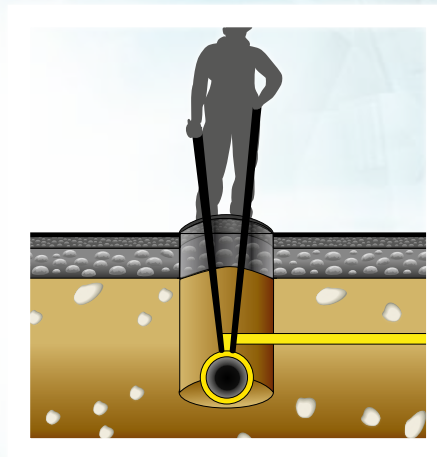
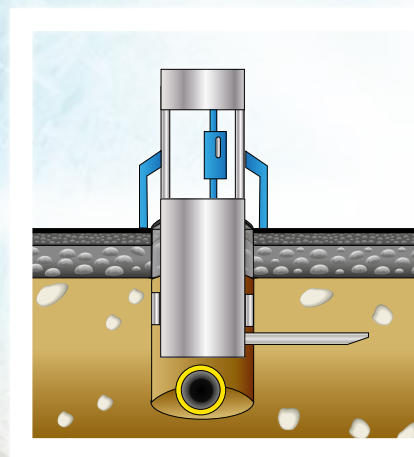
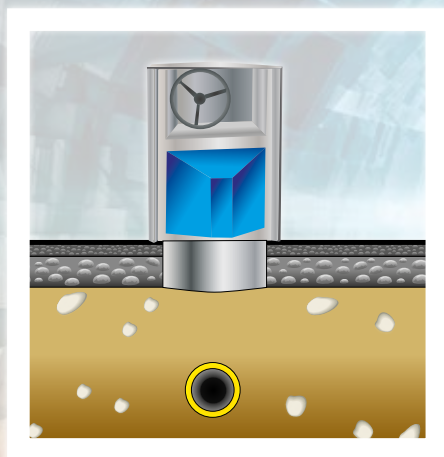


INSPIRING TRENCHLESS TECHNOLOGIES



**TRANSFORMING THE WAY  
YOU WORK**

# ACCESSORIES CATALOGUE

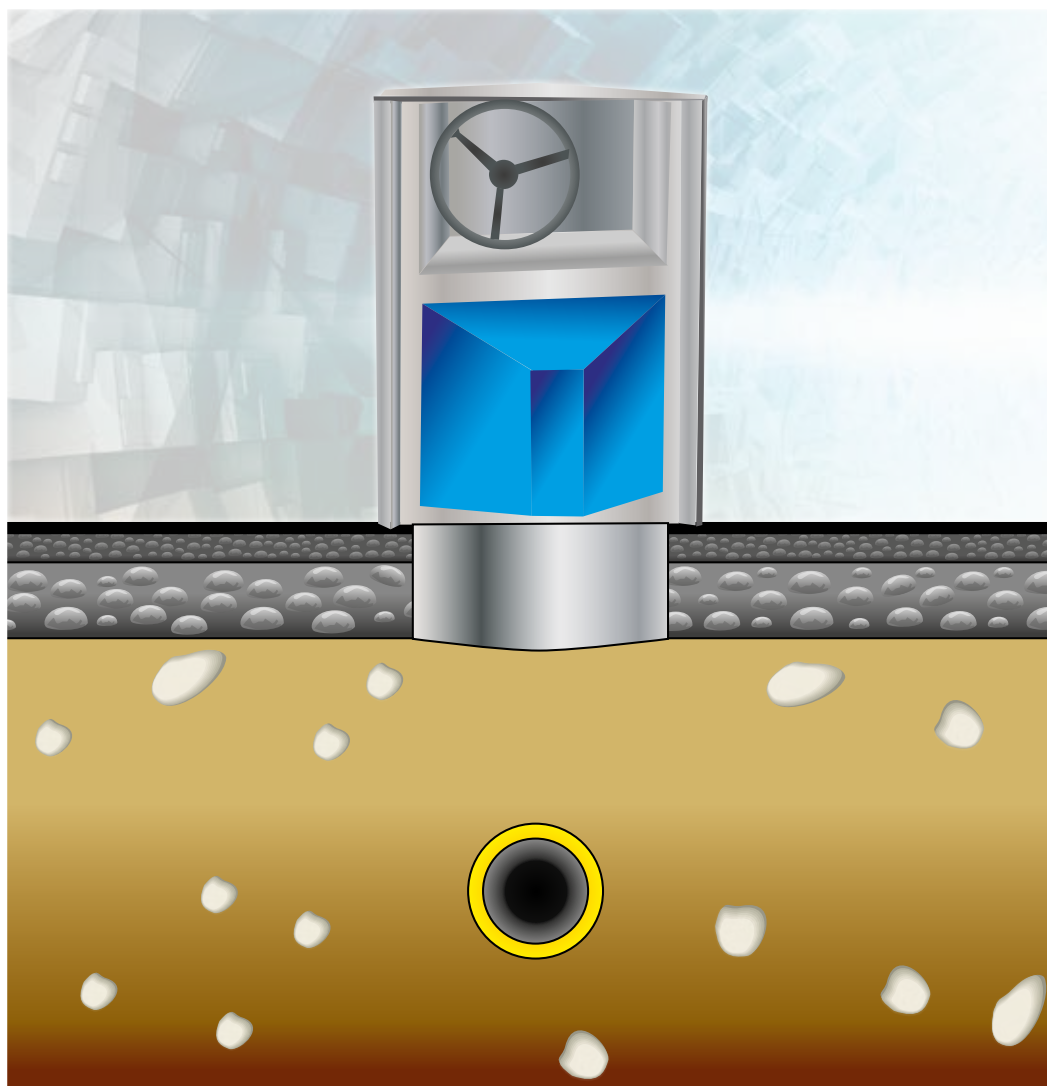
CORE DRILL UNITS, GRUNDOPIT<sup>KEYHOLE</sup> and  
LONG HANDLED TOOLINGS



# CONTENTS

Core drill units.....	3 - 8
GRUNDOPIT Keyhole .....	9 - 17
Long Handled Toolings .....	18 - 28

# ACCESSORIES FOR CORE DRILL UNITS



# CORE DRILL UNITS - DRILL BITS

## Description

## Product No.



### Core barrel for CD 650/450

Core barrel for asphalt and concrete

- Diameter 650 mm
- Working length 450 mm
- Drill bit flange 4-hole flange TkD 130 mm
- (cannot be used with inner Core barrel)
- 36 roof segments

CD 406591

### Core barrel for CD 650/600 and CD 650/600 TSC



Core barrel for asphalt and concrete

- Diameter 80 mm
- Working length 550 mm
- Drill bit holder 1 1/4" UNC thread
- 7 roof segments

CD 30085501



Core barrel for asphalt and concrete

- Diameter 600 mm
- Working length 600 mm
- Drill bit flange 4-hole flange TkD 154 mm
- 32 roof segments

CD 30606001



Core barrel for asphalt and concrete

- Diameter 650 mm
- Working length 600 mm
- Drill bit flange 4-hole flange TkD 154 mm
- 36 roof segments

CD 30656001

## CORE DRILL UNITS - DRILL BITS

### Description

### Product No.



#### Core barrel for CD 1500/650

Core barrel for asphalt and concrete

CD 310065001

- Diameter 1000 mm
- Working length 650 mm
- Drill bit flange 6-hole flange TkD 250 mm
- 44 roof segments

Core barrel for asphalt and concrete

CD 312065001

- Diameter 1200 mm
- Working length 650 mm
- Drill bit flange 6-hole flange TkD 250 mm
- 53 roof segments

Core barrel for asphalt and concrete

CD 315065001

- Diameter 1500 mm
- Working length 650 mm
- Drill bit flange 6-hole flange TkD 250 mm
- 67 roof segments

## CORE DRILL UNITS - ACCESSORIES

### Description

### Product No.

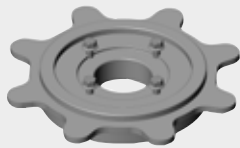
**Cable assembly 10 m**  
incl. connection cable, 6-pole  
**for CD 650/450 and CD 650/600**

PITK 2211

**Cable assembly 10 m**  
incl. connection cable, 10-pole  
**for CD 650/600 TSC and CD 1500/650**

PITK 2212

### Quick-change device for core drill units



#### Complete quick-release device for CD 650/600 and CD 650/600 TSC

PITK 2212

- Simple, fast changeover of drill bits
- Complete set of upper assembly (holder with fastening at core drill unit) and lower assembly (quick-change mounting for drill bits)



#### Quick-release mounting lower part for other Core barrel for CD 650/600 and CD 650/600 TSC

CD 2612



#### Flow meter for CD 650/450 and CD 650/600

CD 2521

## CORE DRILL UNITS - ACCESSORIES

### Description

### Product No.

#### Lifting device for core barrel



**Lifting device  
for core barrel D 650 mm**  
(max. 200 kg)  
outer grip via three arms

CD 50652



**Core barrel lifter D 80 mm**  
for use in central bore hole in core barrel

CD 50081



**Manhole cover D650**  
for Keyhole, load class A15, accessible

PITK 6111

#### Reinstatement



**Collomix hand-guided forced action  
mixer**

229991503

**2-component permanently elastic  
casting compound, cold**

299977

- incl. wire brushes, grit and stirrer
- 2x containers, 1 kg each, for 2 Keyholes (D 600 mm)

**Bonding compound, 1 bag = 20 kg**

6403009

Special bonding compound for the reinstatement of core-drilled plugs in the surface. Owing to the high flowability, the material also avoids gaps below the road surface

## CORE DRILL UNITS - ACCESSORIES

### Description

### Product No.



#### Electrical safety device

PITK 2411

- Grounding cable 1 m, grounding rod
- Grounding mat 990 mm x 1980 mm
- Safety boots and safety gloves
- Audible warning alarm that sounds e.g. when power cables are damaged
- Battery-operated power supply
- Testing device for checking that the alarm is in working order
- Housing with magnetic base



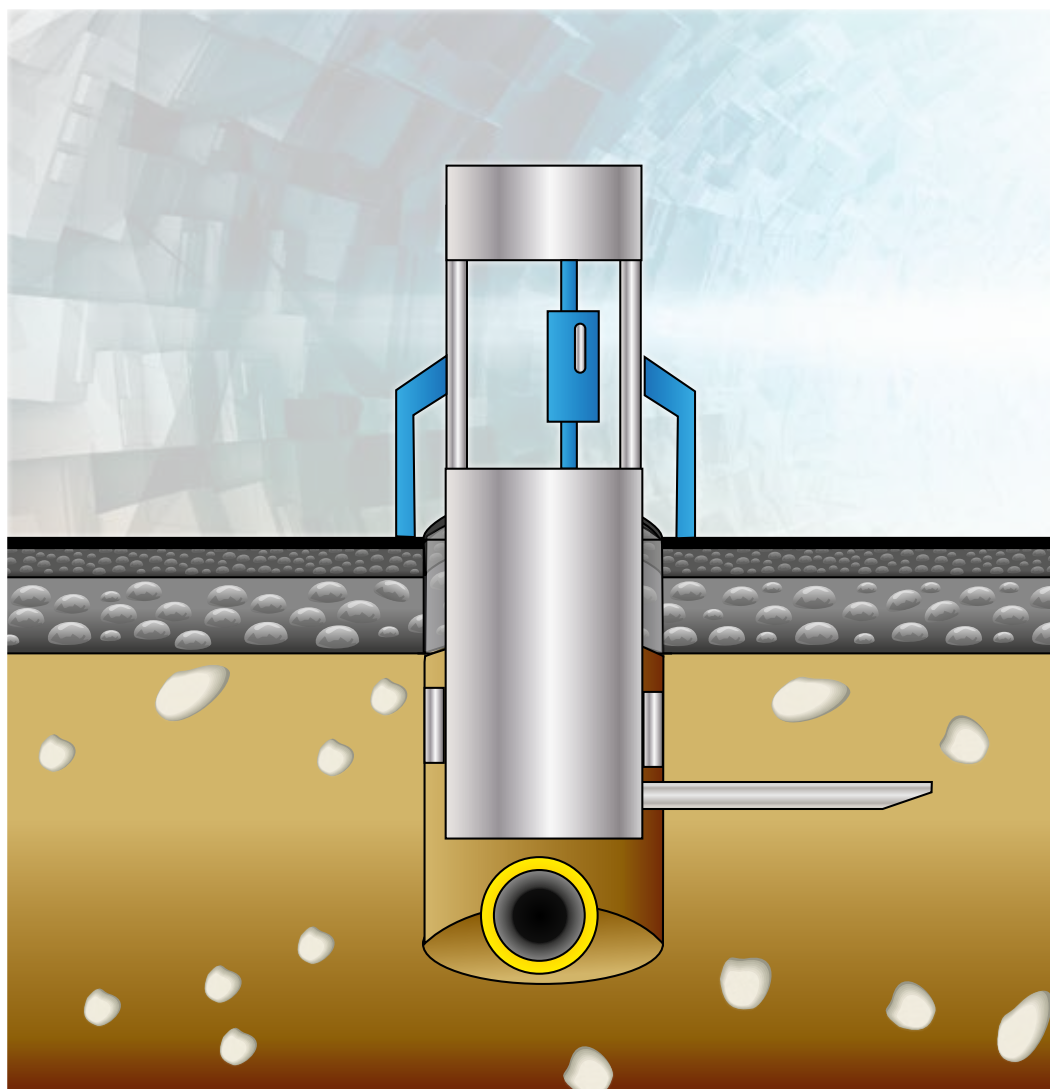
#### Electrical safety device for equipment with wireless remote control

CD 2411

- Grounding cable 1 m, grounding rod
- Safety boots
- Audible warning alarm that sounds e.g. when power cables are damaged
- Battery-operated power supply
- Testing device for checking that the alarm is in working order
- Housing with magnetic base



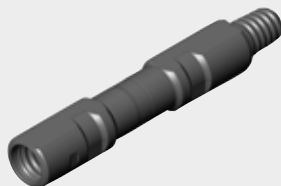
# ACCESSORIES FOR GRUNDOPIT<sup>KEYHOLE</sup>



# GRUNDOPIT<sup>KEYHOLE</sup> - DRILL RODS

## Description

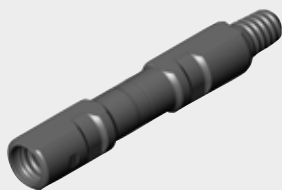
## Product No.



### **Drill rods D50 mm - TD48 thread, working length 230 mm**

PITK 3011

Drill rods made from specialist steel, each 0.30 m long, working length 0.23 m, diameter 50 mm with stop edge, conical thread, hardened



### **Drill rods D50 mm - EL7-4 D50 thread; working length 250 mm**

PITK 30E1

Drill rods made from specialist steel, each 0.30 m long, working length 0.25 m, diameter 50 mm with stop edge, conical thread, hardened



### **Rod box for 100 rods**

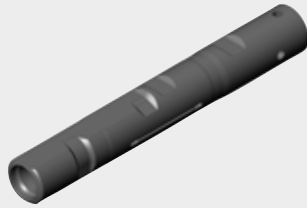
PITK 3411

Suitable for rod type TD 48 and EL7-4

# GRUNDOPIT<sup>KEYHOLE</sup> - TRANSMITTER HOUSING FOR SLIM PROBE

## Description

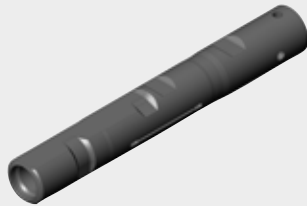
## Product No.



### **Transmitter housing D50 mm; TD48 thread**

PITK 3111

Transmitter housing with internal housing for mini probe diameter 50 mm



### **Transmitter housing D50 mm; EL7-4 D50 thread**

PITK 31E2

Transmitter housing with internal housing for mini probe diameter 50 mm

# GRUNDOPIT<sup>KEYHOLE</sup> - LOCATING TECHNOLOGY

## Description

## Product No.



### DigiTrak Falcon FT1S Probe

SEN 0078K

0.1% steps, 9.0 - 13.5 kHz, depth range in transmitter housing approx. 4 m



### DigiTrak Falcon F1 System without probe

SEN 0581.4

1x DigiTrak F1 Falcon Receiver  
1 x battery charger with 12 V / 115 V / 220 V  
2x battery pack

### DigiTrak Falcon F1 System without probe

SEN 0581.2

1x DigiTrak F1 Falcon Receiver  
1x DigiTrak FCD Standard Remote Transmission Monitor  
1 x battery charger with 12 V / 115 V / 220 V  
3x battery pack

# GRUNDOPIT<sup>KEYHOLE</sup> - DRILL HEAD



### Drill head D 58 mm with carbide-tipped teeth

PITK 3211

- Very easy to control
- Easy to leave drilling channel
- Extremely high wear protection thanks to carbide plating

# GRUNDOPIT<sup>KEYHOLE</sup> - BACKREAMER

## Description

## Product No.

### Swivel with TD48 thread

- Swivel DA50 mm
- 1to rotating swivel
- Fork head connection

PITK 41503

### Backreamer with TD 48 thread

- Conical design for very smooth running and optimal grading of drilling channel
- Suitable for almost all types of soil
- Extremely longlife, robust and low-wear design

### Backreamer basic body D80 mm; cutting diameter D85; 1to rotating swivel

Smooth design with recessed carbide bits, fork head connection

PITK 41802

### Backreamer basic body D85 mm; cutting diameter D95; 5to rotating swivel

Smooth design with welded carbide bits, tension lug connection

PITK 41G122

### Swivel with EL7-4 D50 thread

- Swivel DA50 mm
- 1to rotating swivel
- Fork head connection

PITK 4E502

### Backreamer with EL7-4 thread

- Conical design for very smooth running and optimal grading of drilling channel
- Suitable for almost all types of soil
- Extremely longlife, robust and low-wear design
- Smooth design with welded carbide bits, tension lug connection

### Backreamer basic body D70 mm; cutting diameter D85; 5to rotating swivel

PITK 4EDG21

### Backreamer basic body D85 mm; cutting diameter D95; 5to rotating swivel

PITK 4EG121

### Backreamer basic body D85 mm; cutting diameter D105; 5to rotating swivel

PITK 4EGK21

### Backreamer basic body D85 mm; cutting diameter D130; 5to rotating swivel

PITK 4EKM21

## GRUNDOPIT<sup>KEYHOLE</sup> - CONNECTION ELEMENTS FOR PULLING IN OF THE PIPE

### Description

### Product No.

**A connecting link is also required for the connection when using a backreamer with 5to rotating swivel**



**Connecting link 2to**

For connecting long pipes and short pipes with loose connection.

1599000040

**Connecting link 3.15to**

For connecting long pipes and short pipes with loose connection at the 5to rotating swivel.

1599000041



**Connecting shackles 5to**

For connecting long and short pipes for backreamers with cutting diameter over 100 mm.

1515016001

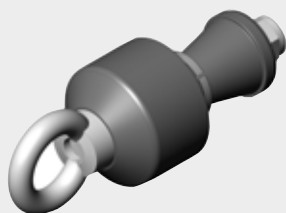
# GRUNDOPIT<sup>KEYHOLE</sup> - PIPE PULLERS

## Description

## Product No.

### Pipe pullers for long pipes (SDR11 - SDR 17.6)

Pipe pullers connect swivel and the PE product pipe to be installed. Pipe pullers are used for pulling in pipes. TT pipe pullers are automatically adapted to all standard pressure stages of the respective pipes.

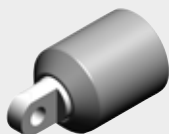


**Pipe puller Ø 25 mm**  
**Pipe puller Ø 32 mm**  
**Pipe puller Ø 40 mm**  
**Pipe puller Ø 50 mm**  
**Pipe puller Ø 63 mm**  
**Pipe puller Ø 75 mm**  
**Pipe puller Ø 90 mm**

GMO 2380R  
 GMO 2390R  
 GMO 2400R  
 GMO 2410R  
 GMO 2420R  
 GMO 2430R  
 GMO 2440R

### Short pipe puller for long pipes

sealing; very short design; connection to fork head PITK 4511



**For pipe DA 32**  
**For pipe DA 40**  
**For pipe DA 63 (non-sealing)**

PITK 44321  
 PITK 44401  
 PITK 44631

### Cutting nipples for long pipes

connection swivel and the PE product pipe to be installed. Cutting nipples are screwed into the pipe.



**Cutting nipples DI 32-40 mm**  
**Cutting nipples DI 35-45 mm**  
**Cutting nipples DI 45-55 mm**

PIT 4202.1  
 PIT 4202.2  
 PIT 4202.3

### Support sleeve for pulling in short pipe

#### Support sleeve for pipe DN 40

Fixed connection to 1to rotating swivel

PITK 42402

#### Support sleeve for pipe DN 63

flexible connection due to connecting link to 1to and 5to rotating swivel

PITK 42632

#### Support sleeve for pipe DN 75

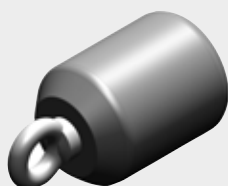
flexible connection due to connecting link to 5to rotating swivel

PITK 42751

#### Support sleeve for pipe DN 90

flexible connection due to connecting link to 1to and 5to rotating swivel

PITK 42901



# GRUNDOPIT<sup>KEYHOLE</sup> - OTHER ACCESSORIES

## Description

## Product No.



### Isolation adapter for screwing into support sleeve

Fully assembled. Specially designed for applications where electrical non-conductivity is required.

For pipes up to DA75  
For pipes DA 90

GRU 075 0315  
GRU 200 0315



### Haul rope, 15 m

with steel end clamps and banjo bolt  
For pipes up to DA75

GRU 075 0320

### Extension steel rope, 15 m

with steel end clamps,  
banjo bolt and connector  
For pipes DA 75

GRU 075 0330

### Haul rope, 25 m

with steel end clamps and banjo bolt  
For pipes up to DA90

GRU 200 0320

### Extension steel rope, 25 m

with steel end clamps,  
banjo bolt and connector  
For pipes DA 90

GRU 200 0330



### Plug-in adapter for short pipes

For use between short pipe and  
clamping jaws

**For pipes DA40**  
**For pipes DA63**  
**For pipes DA75**  
**For pipes DA90**

PITK 43401  
PITK 43631  
PITK 43751  
PITK 43901



### Clamping jaws (short pipe)

**For pipes up to DA75**  
**For pipes DA 90**

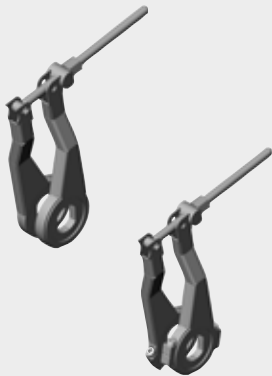
GRU 0750340  
GRU 0950340



# GRUNDOPIT<sup>KEYHOLE</sup> - OTHER ACCESSORIES

## Description

## Product No.



### Rod breaking unit for backreamers D<80 mm

PITK 3511

- For removing the transmitter housing
- Can be used in basement or trench

### Rod breaking unit (separable) for backreamers D>80 mm and D< 80 mm

PITK 3512

- For removing the transmitter housing
- Can be used in basement or trench



### Safety device, comprising:

PITK 2411

- Grounding cable 1 m, grounding rod, grounding mat
- Safety boots and safety gloves
- Audible warning alarm that sounds e.g. when power cables are damaged
- Battery-operated power supply
- Testing device for checking that the alarm is in working order
- Housing and connector
- 

### Service package for GRUNDOPIT<sup>KEYHOLE900/40</sup> comprising:

PITK 2311

- Set of wear parts such as O-rings, screws, dowel pins, driving ring, etc.
- Tool

### Service package for GRUNDOPIT<sup>KEYHOLE1200/50</sup> comprising:

PITK 2312

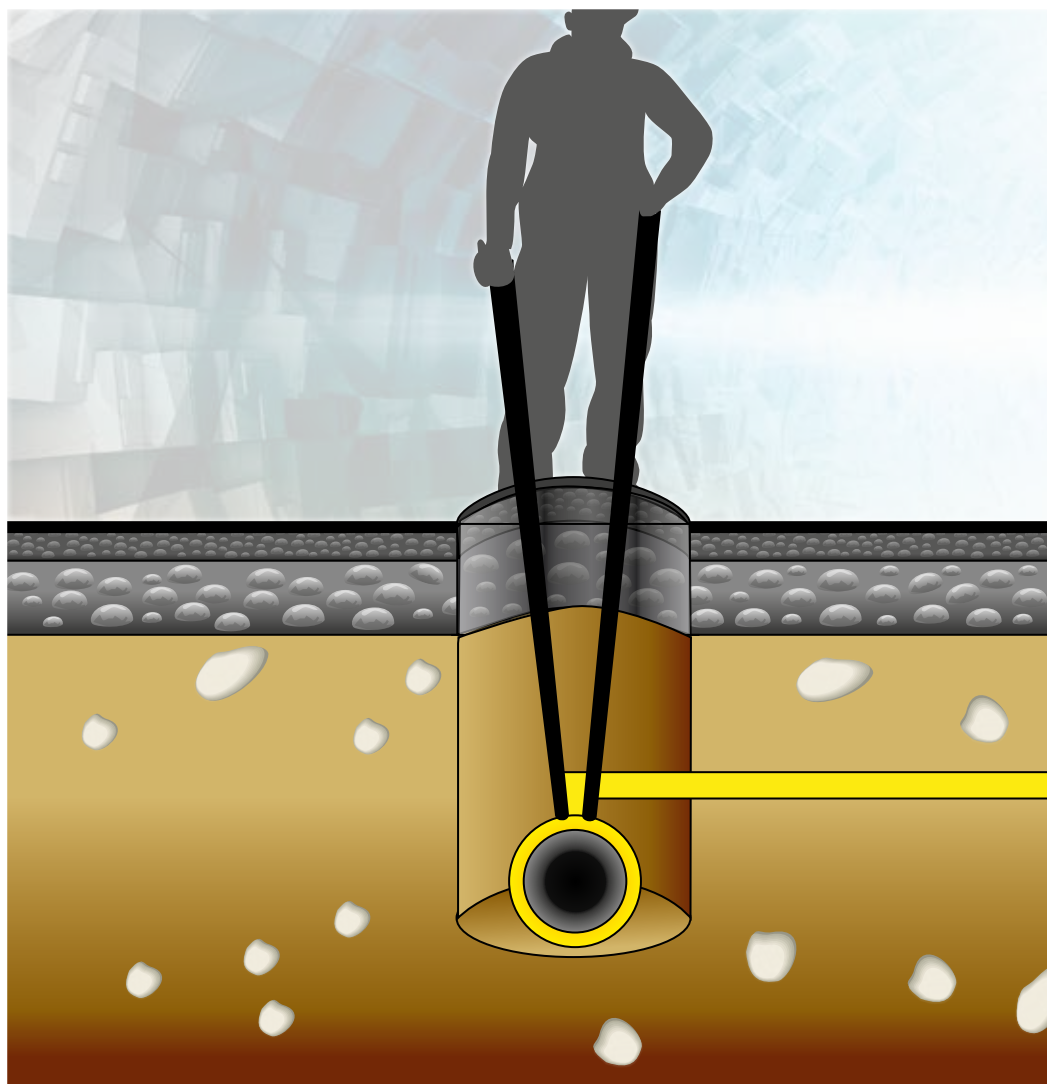
- Set of wear parts such as O-rings, screws, dowel pins, driving ring, etc.
- Tool



### Retrieval tool for backreamer with loop

PITK 6311

# ACCESSORIES FOR LONG HANDLED TOOLINGS



# LONG HANDLED TOOLINGS

## Description

## Product No.



### **CARBON QUICK COUPLING**

Universal tool holder for the operation of long handled toolings within the keyhole

Patented quick coupling for the long handled product range with adjustment and drive mechanism

**CARBON QUICK COUPLING 2.0 m**

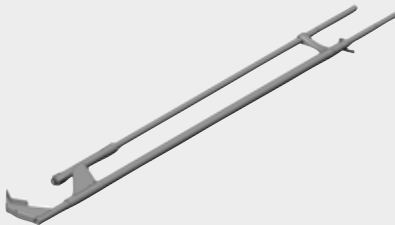
LHT 1102

**CARBON QUICK COUPLING 2.4 m**

LHT 1101

### **CLAMPING DEVICE, HOUSE CONNECTION**

Clamp for fixing PE weld-on fittings, which only consist of one nut (Top Loader)



**CLAMPING DEVICE, HOUSE CONNECTION with 1.5 kN clamping force**

LHT 2030001

**Adapter and RADIUS Top Tee Fitting**

YY 306324

**(more available on request)**

### **Welding clamps up to DA 40 mm diameter**

LHT 2041001

Clamps for aligning and fixing PE pipes in welding socket

Can be set to diameter 25, 30, 32 and 40 mm

Connection: LHT 11XX



# LONG HANDLED TOOLINGS

## Description

## Product No.



### PE CUTTER UP TO DA 40

Cutting tool for separating PE pipes up to DA 40 mm

Connection: LHT 11XX

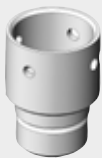
LHT 2061001



### COVER CLAMP D35 -D70

Tool for screwing on and slackening end cap connection fittings

LHT 2071001



### CONNECTION OF FRIATEC FITTINGS

Direct connection of FRIATEC DAP connection fittings to operating rod

Connection: LHT 11XX

LHT 2511001



### 3-WAY HOOK

Tool for lifting lower shell of FRIATEC DAP connection fittings 63 - 225 mm

Connection: LHT 11XX

LHT 2511002



### SOCKET WRENCH EXTENSION 1/4"

Socket wrench connection to 1/4" square

Connection: LHT 11XX

LHT 2511003

# LONG HANDLED TOOLINGS

## Description

## Product No.



### PIPE GRIPS up to DA40

LHT 2991001

Tool for gripping pipes up to DA 40 mm

Connection: LHT 11XX



### PNEUMATIC BRUSH SANDER

LHT 3021001

Pneumatic brush sander with adjustable angle for cleaning existing metallic pipes, operating pressure 6 bar, air consumption 110 l/min, connection: LHT 11XX, LHT 4040003, LHT 4040001

### SPARE BRUSH, COARSE 23 mm

229500056.07

### SPARE BRUSH, FINE 23 mm

229500056.05

### SPARE BRUSH, COARSE 11 mm

229500056.08

### SPARE BRUSH, FINE 11 mm

229500056.06

### SPARE BRUSH, MEDIUM 11 mm

229500056.09

### SPARE ADAPTER WIDE BRUSH 23 mm

229500056.03

### SPARE ADAPTER NARROW BRUSH 11 mm

229500056.04



### PNEUMATIC CHISEL

LHT 3021002

Pneumatic chisel with adjustable angle for cleaning existing metallic pipes, operating pressure 6 bar, air consumption 320 l/min

Connection: LHT 11XX, LHT 4040003, LHT 4040001

### SPARE BOLSTER CHISEL

229500512.02

### SPARE SPRING CAP BOLSTER CHISEL

229500512.04

### SPARE RING R 12-7

229500512.05

### SPARE SPRING CAP

229500512.03

# LONG HANDLED TOOLINGS

## Description

## Product No.



### **CLEANING BELT, long**

Cleaning belt for scraping coarse dirt on the bottom of existing pipes  
Connection: 2x LHT 2991001

LHT 3021003



### **CLEANING BELT, short**

Cleaning belt for scraping coarse dirt on the top of existing pipes  
Connection: 2x LHT 2991001

LHT 3021004



### **WELD-ON CONNECTOR PLIERS**

Pliers for inserting and removing weld-on connector

LHT 3041001

Connection: LHT 11X



### **PIPE BREAKING UNIT**

Tool for breaking existing pipes made from brittle materials  
Crushing force 10 kN  
Connection: LHT 3060003

### **PIPE BREAKING UNIT D63 - 150**

(DA 63 - 150 mm)

LHT 3060001

### **PIPE BREAKING UNIT D150 - 250**

(DA 150 - 250 mm)

LHT 3060002

### **Replacement blade for pipe breaking unit**

YY 306045



### **STAND WITH CLAMP**

Stand for vertically fixing pipe breaking unit for protecting inner PE lines during breaking process

LHT 3060004



### **HYDRAULIC FOOT PUMP, 700 bar**

LHT 3060003

# LONG HANDLED TOOLINGS

## Description

## Product No.



### PIPE CUTTER BASE FRAME (without clamping arm)

LHT 3061050

Pipe cutter for cutting or separating existing metallic pipes (also possible for new inner pipes)

Connection: LHT 11XX, LHT 4040002, LHT 4040001

Clamping arms: LHT 3061051, LHT 3061052, LHT 3061053, LHT 3061054

### SPARE DIAMOND CUTTING DISC for GREY CAST IRON

223410118

### SPARE DIAMOND CUTTING DISC for STEEL

223410119



### CLAMPING ARMS D80 - 120

LHT 3061051

Clamping arms for securing the pipe cutters on the pipe  
DA 80 - 120 mm

### CLAMPING ARMS D120 - 160

LHT 3061052

Clamping arms for securing the pipe cutters on the pipe  
DA 120 - 160 mm

### CLAMPING ARMS D160 - 200

LHT 3061053

Clamping arms for securing the pipe cutters on the pipe  
DA 160 - 200 mm

### CLAMPING ARMS D200 - 240

LHT 3061054

Clamping arms for securing the pipe cutters on the pipe  
DA 200 - 240 mm



### GAS PRESSURE SPRING FOR CLAMPING ARMS

141500041

### TRANSPORT BOX FOR PIPE CUTTERS

Auf Anfrage

# LONG HANDLED TOOLINGS

## Description

## Product No.



### **BORING TOOL**

Tool for removing  
screwed connection fittings

### **T-grip for boring tool**

LHT 3070001

### **EXTENSION 1"; 1800 mm LONG**

LHT 3070002

### **BORING TOOL D50 mm; 1"**

LHT 3070003

### **BORING TOOL D70 mm; 1"**

LHT 3070004



# LONG HANDLED TOOLINGS

## Description

## Product No.



### **MOUNTING FOR VOLT STICK non-conductive**

LHT 3510001

Without Volt Stick

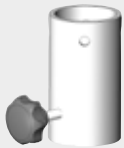


### **UNIVERSAL GRIPPER**

LHT 3991001

Universal gripper with self-locking effect

Connection: LHT 11XX



### **UNIVERSAL MOUNTING**

LHT 4011001

e.g. for marking pin  
Connection: LHT 11XX



### **FOOT PEDAL FOR PNEUMATIC TOOL**

LHT 4040001

Input: Compressor claw coupling G3/8  
Output: Quick coupling socket  
NW 12

Connection: LHT 4040002, LHT  
4040003

### **COMPRESSED AIR HOSE**

LHT 4040002

**13 mm - 4M LONG** for operation of  
attachments

LHT 4040003

### **COMPRESSED AIR HOSE**

**9 mm - 4M LONG** for operation of  
attachments, incl. quick coupling  
reducer  
13-9 mm

### **Quick coupling reducer 13-9 mm**

306540

### **Connecting hose**

Claw coupling G3/8", 10 m,  
Claw coupling G3/8", 20 m,

GRU 2004110  
GRU 2004120



# LONG HANDLED TOOLINGS

## Description

## Product No.



**PE Service Pipe Scrapers Transport Box, without tool, for 25-32-40-50-63 mm**

Auf Anfrage

### Scraping device

Scraping device for removing oxide layer on PE pipes

Connection: LHT 2011011



**SCRAPING DEVICE DA25 COMPLETE**

LHT 2010011



**SCRAPING DEVICE DA32 COMPLETE**

LHT 2010012



**SCRAPING DEVICE DA40 COMPLETE**

LHT 2010013



**SCRAPING DEVICE DA50 COMPLETE**

LHT 2010014



**SCRAPING DEVICE DA63 COMPLETE**

LHT 2010015

**SPARE CUTTING TIP 25**

YY 306532

**SPARE CUTTING TIP 32/40**

YY 306499

**SPARE CUTTING TIP 50/63**

YY 306527



### ANGULAR GEAR

Angular gear with quick-action chuck for drive of scraping devices  
LHT 201001X

LHT 2011011

Connection: LHT 11XX

# LONG HANDLED TOOLINGS

## Description

## Product No.



### ROCKING SCRAPING DEVICE (without clamping arms)

LHT 2011002

Scraping device for removing oxide layer on PE pipes in area of upper pipe half shell. With use of corresponding clamping arms it can be used for Da 50 mm to Da 225 mm.

Connection: 2x LHT 2011004  
LHT 2010005 - 2010008



### SPARE TURNING PLATE ROCKING PEELING DEVICE

22W823605

### CONNECTION FOR ROCKING SCRAPING DEVICE

LHT 2011004

Connection: LHT 11XX



### Transport box for rocking Scraping device

upon request

### Clamping arms for ROCKING SCRAPING DEVICE

Clamping jaws for securing the rocking Scraping device on the pipe

D 50 - 80 mm

LHT 2010008

D 90 - 110 mm

LHT 2010007

D125 -160 mm

LHT 2010006

D180 - 225 mm

LHT 2010005



### BLADE FOR SWARF

LHT 2011003

Blade for removing swarf from pipe after use of rocking Scraping device

Connection: LHT 11XX

### SPARE TRAPEZOIDAL BLADES 10 pc.

220180018

# LONG HANDLED TOOLINGS

## Description

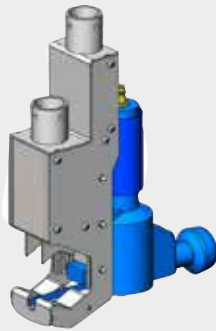
## Product No.



### **inspection mirror forKEYHOLE**

LHT 2991002

Connection: LHT 11XX



### **PNEUMATIC SAW DEVICE FOR STEEL PIPES**

LHT 3061061

Sawing device for cutting all kinds of pipes up to DA 40 mm

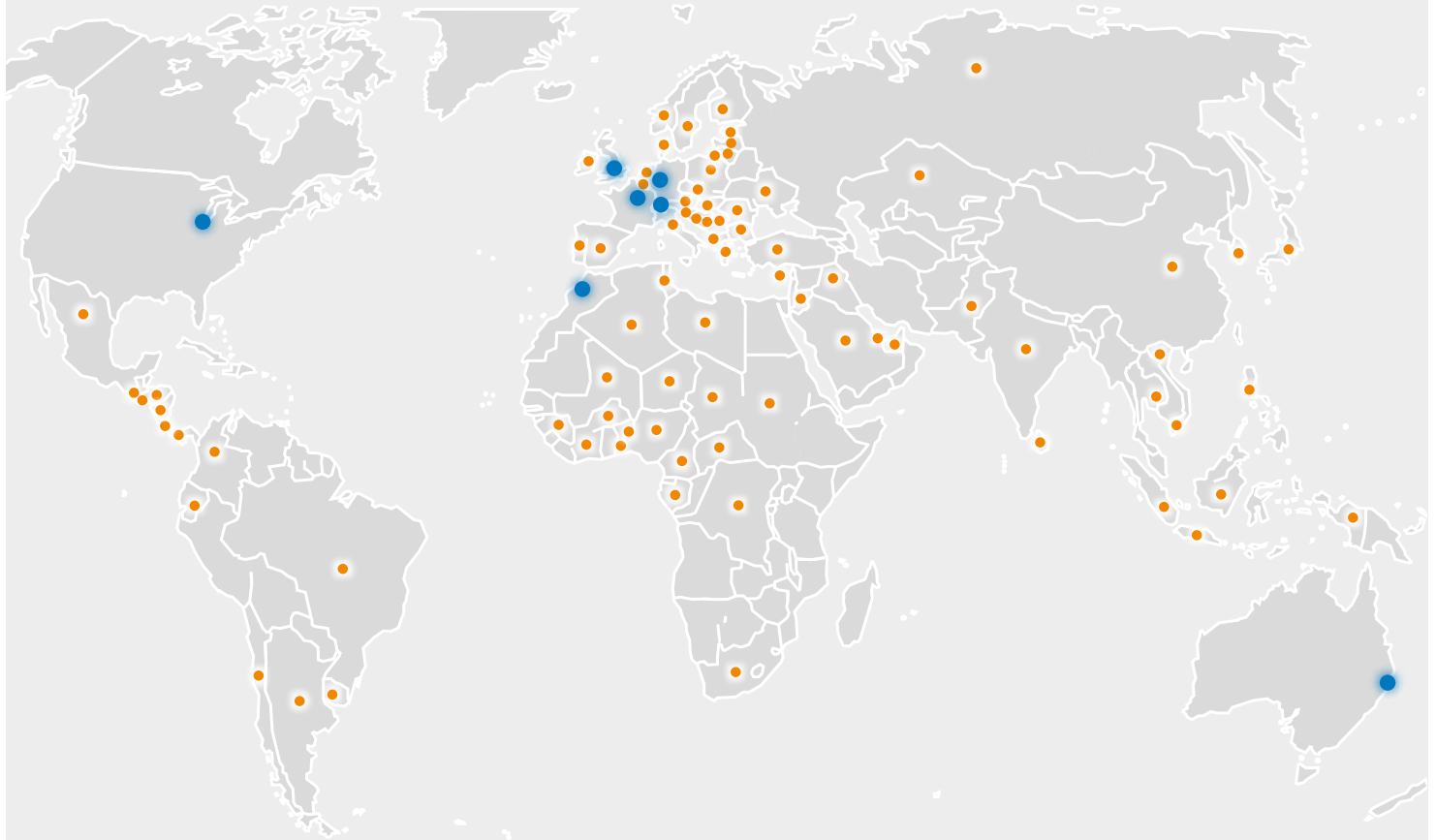
Connection: LHT 11XX, LHT 4040003

### **Spare saw blade Bi-metal**

227130041

# TRACTO-TECHNIK

worldwide



Germany  
**TRACTO-TECHNIK GmbH & Co. KG**  
**TT Headquarters**  
Paul-Schmidt-Straße 2  
57368 Lennestadt  
Tel: +49 2723 808-0 · Fax: -180  
export@tracto-technik.de  
www.TRACTO-TECHNIK.com

Switzerland  
**TRACTO-TECHNIK**  
**Schweiz AG**  
Ratihard 3  
8253 Diessenhofen  
Tel: +41 79 8203897  
info@tracto-technik.ch  
www.TRACTO-TECHNIK.ch

United Kingdom  
**TRACTO-TECHNIK UK Ltd**  
10 Windsor Road  
Bedford MK 42 9SU  
Tel: +44 1234 342566  
Fax: +44 1234 352184  
info@tt-uk.com  
www.TRACTO-TECHNIK.co.uk

France  
**TRACTO-TECHNIK France**  
1/3 Rue de la Prairie  
F-77700 Bailly Romainvilliers  
Tél: +33 1 60 42 49 40  
Fax: +33 1 60 42 49 43  
info@tracto-technik.fr  
www.TRACTO-TECHNIK.fr

Presented by your TT partner:

USA  
**TT TECHNOLOGIES Inc.**  
2020 East New York Street  
Aurora, IL. 60502  
Tel: +1 630 851 8200  
Fax: +1 630 851 8299  
info@tttechnologies.com  
www.TTTECHNOLOGIES.com

Australia  
**TT ASIA PACIFIC Pty Ltd.**  
Unit 2, Devlan Street  
Mansfield, Qld 4122  
Tel: +61 734205455  
Fax: +61 734205855  
info@tt-asiapacific.com  
www.TT-ASIAPACIFIC.com

Morocco  
**TRACTO-TECHNIK Afrique**  
Route de Tamesna 4022  
Poste 2044, 12220 Tamesna  
Tel.: +212 53740 1363/64  
Fax: +212 53740 1365  
info@tracto-technik.ma  
www.TRACTO-TECHNIK.ma

**INSPIRING TRENCHLESS TECHNOLOGIES**

