

Always. Reliable. Tight.

hauff  
technik®



NO CHANCE FOR UNWANTED INTRUDER

WE HAVE TO STAY OUTSIDE!

Cable. Pipe. Building Entry. Always. Reliable. Tight.  
**SOLUTIONWORLD**



Electricity, telecommunication, water, waste water, gas or district heating - whenever a perfectly safe sealing of building entries is required, Hauff-Technik offers the best possible solution. Innovative cable and pipe entries, building entries and trenchless house connections of professional quality. All from one source. Out of the box or customized products. For highest efficiency, user-friendliness and longevity in all buildings. From single-family homes to complex major projects. Always Hauff. Always reliable. Always tight.



For each and every wall, ceiling and stress class

## CABLE ENTRY SYSTEMS

The system concept plays a key role at Hauff-Technik.

Easy handling with short installation times, flexibility and versatility, safe and reliable sealing and longevity make the total system an extremely economical and efficient solution..

### COMBINATION OF COMPONENTS

In product development and optimisation, the emphasis is on the almost unlimited possibilities for combining all components. A good example of this are the cable sealing systems HSI 150 and HSI 90 as well as the cable entry systems KES-M 150 and KES-M 90.



In their interaction – HSI 150 or HSI 90 inside the building and KES-M150 or KES-M 90 outside the building – these individual parts are optimally coordinated with each other and meet the requirement for a long-lasting, effective and safe total system. The great versatility ensures the right solution for every situation.

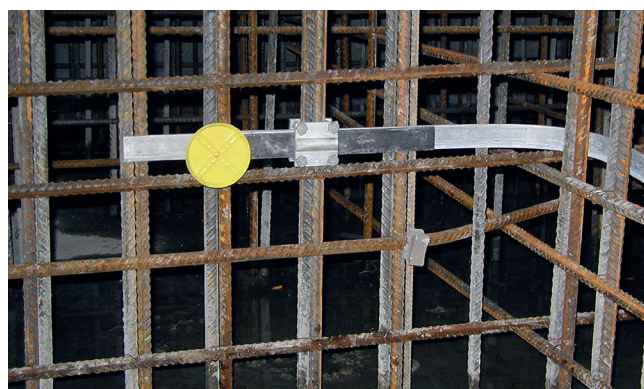


### FLEXIBILITY

Our special-purpose press seals are the perfect solution for cables in core drill holes and wall sleeves. Our standard press seals for cables with segmented ring technology offer you all the options for the reliable sealing of wall ducts for one or several cables. We can quickly and inexpensively supply you with any type, whether Ø 50 or Ø 500 mm.



### VARIATIONS



The HEA Earthing System is the universal connecting option for all earthing, potential equalisation and lightning protection components according to DIN 18014, VDE 0185-305-3, respectively EN 62305. The system offers many application variants and an extensive range of accessories for the areas of house connection, transformer station, substation, power station, signal box, bridge construction, sewage treatment plant, telecommunication.



## A large variety of innovative solutions

# PRESS SEALS

**The standard and individual press seals for cables and pipes offer you all the options for the reliable sealing of wall ducts during initial installation or for retrofit sealing.**

They are for one or several pipes or cables and are used in the electrical, sanitary, heating and air conditioning sectors, and also in underground engineering and pipe laying.

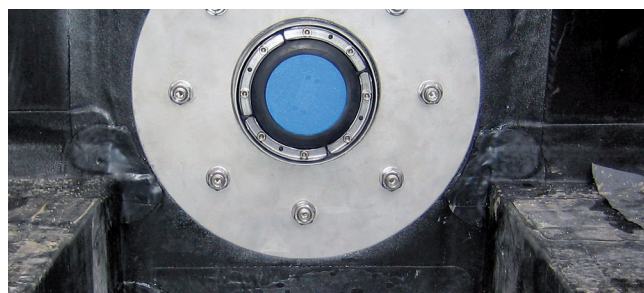


## SECURE SEALING

In combination with the standard wall sleeves with special coating, the press seals create the perfect combination solution for secure sealing of wall ducts.

The new cement bond pipe consists of a break-resistant, inherently stable plastic wall sleeve and a cement-bound special coating. This coating bonds perfectly to the wall sleeve, adheres homogeneously with the concrete, yet still cancels out any fluctuations in temperature and allows flush placement in the formwork.

Press seals and wall sleeves are available quickly and inexpensively in all versions, whether 50 or 1,500 mm.



# Anything but standard SPECIAL SOLUTIONS

**In this product segment you will find the solution for your special sealing application.**

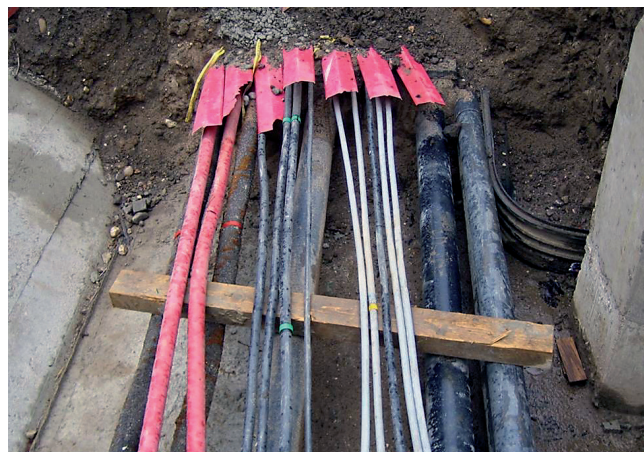
## INDIVIDUAL ADVICE

As building sealing specialists, we know it is not always possible to use a standardised product for every sealing problem.

That is why together with you we will develop the right cable or pipe seals to optimally satisfy your sealing needs.

No matter whether you are looking for a single or multiple flange to screw on over a wall opening, or whether you need a flexible and simple multi-cable entrance in your mobile container that is structured as flexibly and modularly as your entire container, we will find a solution.

And if you do not want to go through the wall but instead need to lead your antenna cable or the pipes for your air conditioning system directly through the roof or facade, you will get your individual sealing solution here.



TIGHT.CABLE PIPE.BUILDINGENTRY.ALWAYS.RELIABLE.ALWAYS.TIGHT.CABLE.PIPE.BUILDING  
INGENTRY.ALWAYS.RELIABLE.ALWAYS.TIGHT.CABLE.PIPE.BUILDINGENTRY.ALWAYS.RELIA  
BLE.ALWAYS.TIGHT.CABLE PIPE.BUILDINGENTRY.ALWAYS.RELIABLE.ALWAYS.TIGHT.CABLE  
UILDINGENTRY.ALWAYS.RELIABLE.ALWAYS.TIGHT.CABLE.PIPE.BUILDINGENTRY.ALWAYS.R  
BLE.PIPE.BUILDINGENTRY.ALWAYS.RELIABLE.ALWAYS.TIGHT.CABLE.PIPE.BUILDINGENTRY  
RY.ALWAYS.RELIABLE.ALWAYS.TIGHT.CABLE.PIPE.BUILDINGENTRY.ALWAYS.RELIABLE.AL  
WAYS.TIGHT.CABLE.PIPE.BUILDINGENTRY.ALWAYS.RELIABLE.ALWAYS.TIGHT.CABLE.PIPE.B  
UILDINGENTRY.ALWAYS.RELIABLE.ALWAYS.TIGHT.CABLE.PIPE.BUILDINGENTRY.ALWAYS.R  
YS.RELIABLE.ALWAYS.TIGHT.CABLE.PIPE.BUILDINGENTRY.ALWAYS.RELIABLE.ALWAYS.TIG  
E ALWAYS.TIGHT.CABLE.PIPE.BUILDINGENTRY.ALWAYS.RELIABLE.ALWAYS.TIGHT.CABLE.P  
E.PIPE.BUILDINGENTRY.ALWAYS.RELIABLE.ALWAYS.TIGHT.CABLE.PIPE.BUILDINGENTRY.AL  
LWAYS.RELIABLE.ALWAYS.TIGHT.CABLE PIPE.BUILDINGENTRY.ALWAYS.RELIABLE.ALWAYS  
.TIGHT.CABLE.PIPE.BUILDINGENTRY.ALWAYS.RELIABLE.ALWAYS.TIGHT.CABLE.PIPE.BUILD  
INGENTRY.ALWAYS.RELIABLE.ALWAYS.TIGHT.CABLE PIPE.BUILDINGENTRY.ALWAYS.RELIA  
CABLE.PIPE.BUILDINGENTRY.ALWAYS.RELIABLE.ALWAYS.TIGHT.CABLE.PIPE.BUILDINGENT  
TRY.ALWAYS.RELIABLE.ALWAYS.TIGHT.CABLE.PIPE.BUILDINGENTRY.ALWAYS.RELIABLE.A  
LWAYS.TIGHT.CABLE.PIPE.BUILDINGENTRY.ALWAYS.RELIABLE.ALWAYS.TIGHT.CABLE.PIPE.  
NGENTRY.ALWAYS.RELIABLE.ALWAYS.TIGHT.CABLE.PIPE.BUILDINGENTRY.ALWAYS.RELIAB  
PE.BUILDINGENTRY.ALWAYS.RELIABLE.ALWAYS.TIGHT.CABLE.PIPE.BUILDINGENTRY.ALWA  
WAYS.RELIABLE.ALWAYS.TIGHT.CABLE.PIPE.BUILDINGENTRY.ALWAYS.RELIABLE.ALWAYS.T

# ALWAYS HAUFF

**Hauff-Technik GmbH & Co. KG**

Robert-Bosch-Straße 9  
89568 Hermaringen, GERMANY

Tel. +49 7322 1333-0  
Fax +49 7322 1333-999

office@hauff-technik.de