



### Ultimate service

Our experienced customer service team are ready to help you get the most from our products. They are available to advise on your choice of product and best practice on installation.

**03444 630 046**

[TARMAC.COM](http://TARMAC.COM)

Swains Park Industrial Estate Park Road Overseal DE12 6JT  
03444 630 046 specialistproducts@tarmacbp.co.uk

©2021 Tarmac Trading Limited.

# Packed Highway Solutions

For Installation, Repair and Reinstatement

Building our future



# Contents

Bedding Mortars	6
High Performance Concretes	12
Repair Macadams	18
Ancillaries	26
Pozament	28



# Innovation as standard

Since Tarmac invented the modern road surface in 1902, we have been at the forefront of developing innovative highway solutions that deliver outstanding results. Our comprehensive packed highways range has been designed to save time and money whilst ensuring that best in class product performance is achieved every time.

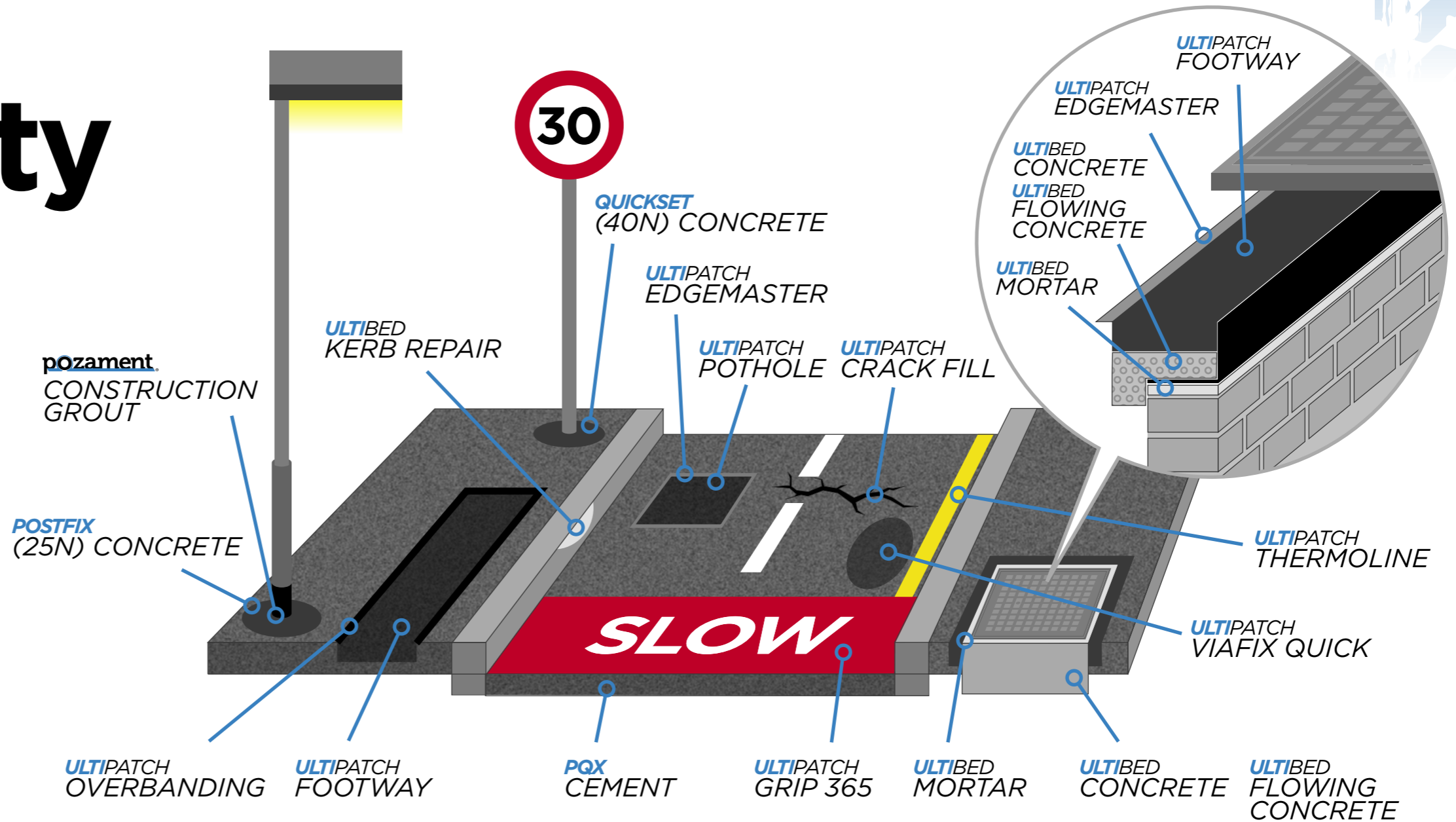
The Tarmac Building Products Centre of Excellence laboratory is at the heart of all our product development and industry leading solutions. Our expert technicians are constantly working to push the boundaries of product performance. With a vast selection of the finest raw materials at their disposal, it's possible to test everything from tiny ingredient tweaks to totally new approaches to product formulations.



# Powering productivity

## Why choose the Tarmac ironwork installation system?

- Full range of bedding mortars, backfill concretes and cold lay surfacing materials
- Ensures right first time installation
- Permanent and high performance
- Suitable for a variety of ironwork installation
- Strict Quality Management under ISO 9001



# ULTIBED MORTAR

**A range of rapid setting, high early strength gain bedding mortars for efficient reinstatement and installation of ironwork.**

All Ultibed bedding mortars have the same working time of 5-10 minutes and a setting time of less than 20 minutes.

The differentiating factor between the mortars is the rate of strength gain once set, giving you the flexibility to choose the right product for the job.

**Ultibed Bedding Mortars fully comply with Highways England HD 27/15:**

“Mortars for bedding iron work such as manhole cover frames during repairs may be trafficked when the strength is expected to be 20 N/mm<sup>2</sup>.”



## Product Benefits

- High early strength gain
- Supplied in weatherproof plastic bags & tubs
- Smooth trowelable consistency
- Shrinkage compensated



**Ultra-high performance bedding mortar**  
Open to traffic after 45 minutes



**High performance bedding mortar**  
Open to traffic after 60 minutes



**General purpose bedding mortar**  
Open to traffic after 90 minutes

# PLUS+

Ultibed mortars are also available with PLUS+ technology, improving performance and reducing environmental impact.

## Product Benefits

- Enhanced strength gain
- 3D fibre reinforcement
- Contains recycled glass aggregate



# ULTIBED MORTAR



**High performance, polymer modified bedding mortar compliant with DMRB HD27/04, CD534 and NRA MCDRW Vol 1 Clause 507.17.**

Ultibed CD is a two-component bedding mortar that combines all the performance benefits of resin based materials with the ease of use and practicality of a cementitious material.

Ultibed CD is designed for the rapid installation and reinstatement of highway furniture and provides exceptional performance in wet weather conditions and high traffic areas. With exceptional compressive, flexural and tensile strength the mortar is perfect for use in high stress areas where critical product performance is required.



## Product benefits

- Smooth mortar consistency
- High early compressive & tensile strength
- 3D fibre reinforcement technology

## Why choose Ultibed CD?

Ultibed CD sets out procedures and defines the materials which will provide the best possible performance of highway ironwork installations. Created to prevent premature ironwork failure, Ultibed CD provides a specification for material designed to be durable, practical and efficient.

Ultibed CD specifies the required performance for bedding materials and has strict performance requirements for compressive strength, tensile strength and working time.

## Compressive Strength

**Requirement - 30N/mm<sup>2</sup> after 3 hours**

High early and final compressive strength is vital for long term durability and performance. Most ironwork reinstatement failures actually occur shortly after installation, but may not become apparent until much later. The failure itself will often be a result of the bond between the bedding material and the piece of ironwork being damaged due to receiving traffic too early. Compressive strength is not the only strength parameter that Ultibed CD covers...

## Tensile Strength

**Requirement - 5N/mm<sup>2</sup> after 3 hours**

Compressive strength is often the only measurement that is considered important when comparing the durability of reinstatement materials, however a high tensile strength is also a key performance requirement. Tensile strength is the measurement of a materials resistance to being torn or pulled apart and will give an indication of a materials performance under dynamic loading. Pieces of ironwork are subject to high dynamic loading forces in heavy traffic areas and where vehicles are moving at speed.

## Extended working time

**Requirement - 15 minutes usable life**

Rapid setting bedding mortars are commonplace in reinstatement projects. Whilst such materials are ideal for small reinstatements, larger applications which require multiple units can be impractical to install correctly and within the short working window. The extended working time of Ultibed CD compliant mortars give users additional time to ensure that mortar is placed and the ironwork is bedded to the highest of standards.

# ULTIBED FLOWABLE MORTAR



**High performance, polymer modified flowable bedding mortar compliant with DMRB HD27/04, CD534 and NRA MCDRW Vol 1 Clause 507.17.**

Ultibed CD Flowable is a two-component flowable bedding mortar that combines all the performance benefits of resin based materials with the ease of use and practicality of a cementitious material.

Ultibed CD Flowable provides all the same performance requirements of Ultibed CD, with the benefits of being a flowable, self-compacting material. This makes Ultibed CD Flowable ideal for use with pre-levelled ironwork installation systems which are designed to ensure that bedding materials are in full contact with the piece of ironwork.



## Product benefits

- Flowable & self-compacting
- High early compressive & tensile strength
- 3D fibre reinforcement technology

# ULTIBED MORTAR



## CD534 compliant high performance polyester resin bedding mortar.

Ultibed PR is perfect for any application that requires high early strength gain and rapid return to service time. Its rapid set and high early strength development reduces road closure and construction times, making it ideal for both planned and emergency repairs.

Ultibed PR is particularly suited for use in heavy traffic routes and areas of repeated failure.

Combining exceptional durability with ultra-high early strength performance, Ultibed PR is fully

compliant with CD534, making it an ideal solution in critical areas where regular or extended road closures are not an option.



### Product benefits

- Open to traffic after 60 minutes
- Exceptional early and ultimate strengths
- Bedding depth 5-50mm



# ULTIBED KERB REPAIR

## Rapid setting patch repair mortar.

Ultibed Kerb Repair is two-component rapid setting patch repair mortar, designed for strong long-lasting repairs to concrete kerbstones and steps.

The rapid setting, polymer modified repair mortar is a great solution for completing small repair in heavy traffic areas, where a quick return to service is required. It's high early strength and long term durability make it ideal for use as a rapid,

permanent repair system for both planned and emergency repair jobs.

The two-component system comprises of a 9kg of blended cementitious powder and 1ltr of liquid polymer all supplied 10kg tub.



### Product benefits

- Open to foot traffic after 90 minutes
- Durable and hard wearing
- High final strength





## ULTIBED CONCRETE

**High performance backfill concrete.  
Open to traffic after 90 minutes.**

Rapid setting and rapid strength gain concretes designed for permanent installation and repair to concrete structures, highways and backfill application.

Ultibed Concretes are high performance, rapid strength gain concretes ideal for the backfill of carriageway ironwork, post and barrier erection, and installation of street furniture.

Both Ultibed Concrete and Ultibed Flowing Concrete have the a working time of 5-10 minutes and a setting time of less than 20 minutes, enabling a rapid return to service.



### Product Benefits

- High early strength gain
- Mix to required concrete slump



## ULTIBED FLOWING CONCRETE

**High performance flowable backfill concrete.  
Open to traffic after 90 minutes.**

**Ultibed Concretes fully comply with Highways England HD27/15:**

“When backfilling around highways iron work, such as manhole cover frames, repairs may be trafficked when the strength is expected to be 20N/mm<sup>2</sup>.”



### Product Benefits

- High early strength gain
- Flowable & self compacting



## PLUS+

Ultibed concretes are also available with PLUS+ technology, improving performance and reducing environmental impact.

### Product Benefits

- Enhanced strength gain
- 3D fibre reinforcement
- Contains recycled glass aggregate

# ULTIBED SR CONCRETE

**Non-shrink, fibre reinforced rapid setting surface concrete.**

Ultibed Surface Reinstatement Concrete is designed for surface reinstatement around street furniture, such as street lighting and access cover.

The rapid set time of Ultibed Surface Reinstatement Concrete makes it an ideal solution where there is a risk of vandalism or where a rapid return to service is required.



## Product benefits

- Open to pedestrians after 1 hour and vehicle traffic after 2 hours
- High early and ultimate strengths
- Smooth surface finish

# FLOWING (40N) CONCRETE

**High performance flowing concrete for high traffic areas.**

Flowing (40N) Concrete is a high performance flowable concrete suitable for general concreting applications and is the perfect solution where site access is limited and bulk concrete cannot be delivered.

Flowing (40N) Concrete is perfect for any concreting application that requires a high final strength in line with that of a C40 concrete.

Flowing (40N) Concrete dries to a light grey colour and is suitable for both surface and sub-surface use.

Flowing (40N) Concrete being a preblended product ensures a high quality, consistent concrete is produced every time and reduces waste in comparison to site batched concrete.



## Product benefits

- Flowable and self compacting
- Durable and hard wearing
- 40N/mm<sup>2</sup> final compressive strength





# QUICKSET (40N) CONCRETE

**High strength quick-setting concrete for high traffic areas.**

Quick Set (40N) Concrete is a high performance quick-setting concrete ideal for the fast and efficient installation of posts, signs and other highways furniture.

Quick Set (40N) Concrete is perfect for any concreting application that requires a fast return to service time, as well as a high final strength in line with that of a C40 concrete. When set it dries to a light grey colour and is suitable for both surface and sub-surface use. Perfect for the fast installation of posts, signs, telephone poles, street lighting columns, roadside barriers, speed cameras, etc.



## Product benefits

- Fast setting - 15 minutes
- 40N/mm<sup>2</sup> final compressive strength
- Easy to use, pre-blended, one component product - just add water & mix



# POSTFIX (25N) CONCRETE

**Rapid setting no-mix concrete for efficient post installation.**

Postfix (25N) Concrete is a simple to use, high performance concrete ideal for the rapid installation of highway furniture, street lighting and posts.

Postfix (25N) Concrete requires no mixing, the material should be poured dry into the hold before adding water. The water will permeate through the powder causing it to rapid set within 5-10 minutes.



## Product benefits

- Easy to use - no bracing required
- No mixing required - just add water
- Rapid setting - sets in approximately 5-10 minutes

# Right first time repairs and reinstatements

The cost of materials is a relatively small proportion of the full cost of repairing a pothole. Having to return to site for a failed repair is the ultimate false economy. Selecting the right high-quality materials helps get road repairs right first time and avoid the cost of repeated repairs and road closures.

Using Tarmac's expertise in materials innovation, we have developed a range of specialist asphalts for repair and reinstatement including cold lay asphalts in bags or tubs and site mixed asphalts heated in just the right quantity and temperature at the point of use.

## Manufactured and tested to the highest standards

As well as being tested in our own laboratories, our packed highways products are rigorously scrutinised as part of their BBA HAPAS accreditation. This involves both laboratory and site-based inspections and performance trials; a process that can take up to two years. Once the certificate is issued, the manufacturer is regularly audited to check everything from equipment calibration and raw materials to processes and training to ensure compliance with the same high standards. This means that when you choose from our range of Packed Highways products, you can be sure of a consistent, dependable, long lasting solution.

# ULTIPATCH POTHOLE

## For the instant repair of potholes in roads, driveways & car parks.

Ultipatch Pothole is a HAPAS approved permanent cold-lay surfacing asphalt designed to be the perfect solution for carriageway repairs all year round.

Ultipatch Pothole consists of a high PSV 6mm aggregate and a specialist bitumen binder that has been formulated to give the ultimate performance in all weather conditions.

Upon compaction the graded aggregate is designed to interlock and bind tightly together, which means no further curing time is required and the repair instantly trafficable.



## Product benefits

- Immediate return to traffic
- HAPAS & BBA Approved
- Perfect for planned and reactive repairs



# ULTIPATCH VIAFIX QUICK

## Extreme performance asphalt repair.

Ready to use straight from the bag and provides long term re-instatement for all classes of road, including motorways.

Extreme performance pothole repair material for use in all roads and in all weather conditions.

ULTIPATCH Viafix Quick may be overlaid with any road surfacing material, or sealed with surface dressing. When correctly applied, ULTIPATCH Viafix Quick will not be damaged by traffic, rain or frost.



### Product benefits

- Immediate return to traffic
- HAPAS & BBA Approved
- All weather, easy & rapid application



# ULTIPATCH FOOTWAY

## For the instant repair of footpaths & cycle tracks.

Ultipatch Footway is a HAPAS approved permanent cold-lay surfacing asphalt designed to be the perfect solution for repairs in footpaths, footways and cycle tracks.

Ultipatch Footway consists of a high PSV fully graded aggregate (6mm to dust) and a specialist bitumen binder that has been formulated to give the ultimate performance in all weather conditions.

Upon compaction the graded aggregate is designed to interlock and bind tightly together, which means no further curing time is required and the repair instantly trafficable.



### Product benefits

- Immediate return to traffic
- HAPAS & BBA Approved
- Perfect for utility reinstatement



# ULTIPATCH SITEMIX

Winner of Highway Industry  
**Product of the Year**  
HIGHWAYS AWARDS 2018

# ULTIPATCH PRE-COATED CHIPPINGS

## Fresh Asphalt on-demand.

Fresh asphalt on demand for use in low volume asphalt mixers (LVA). Site-mixed asphalt provides you with exactly the right quantity of fresh asphalt, whenever and wherever you need it.

Specially designed for utility and highway reinstatement in areas where bulk supply isn't convenient or practical. Available in highway and footpath grades, ensuring maximum suitability.



## High PSV 20mm coated chippings

Ultipatch Pre-Coated Chippings are high PSV coated chippings designed to provide exceptional durability as part of a hot rolled asphalt surface course.



### Product benefits

- Increased productivity
- Faster heating
- Ultimate versatility

### Product benefits

- High durability
- Consistent quality and grading
- High stability



# ULTIPATCH GRIP 365

**Tarmac's Ultipatch Grip 365 repair system is a rapid, all-weather solution for long lasting repair and reinstatement of High Friction Surfacing.**



## Product Benefits

- Rapid, all-weather reinstatement of HFS patches
- Restores texture, skid resisting properties
- Quick to apply and sets rapidly: typically open to traffic in 15-25mins
- Available in 5 colours to match the colour of existing HFS (red, green, black, buff, grey)
- Can be used in wet weather, sub-zero temperatures or on salted road surfaces
- Can be applied to range of surfaces including concrete and steel



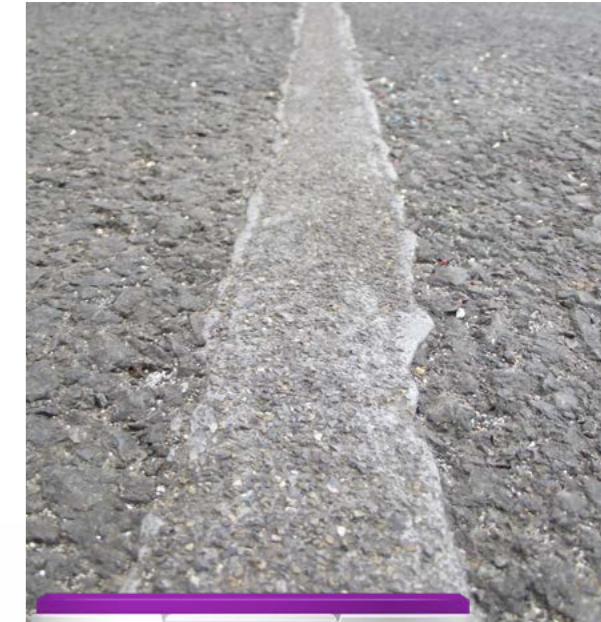
# ULTIPATCH CRACK FILL

**Tarmac's Ultipatch Crack Fill repair system is designed to effectively seal cracks and joints in roads.**

It allows preventative maintenance and enables early intervention to protect roads and halt the formation of potholes by preventing water ingress and damage from frost and road traffic.

## Product Benefits

- Waterproof seals for cracks and joints in roads
- Prevents water ingress and damage from traffic and frost
- Halts pothole formation to protect highway assets
- Reduces risks to road users from damage to the road surface
- Rapid return to service
- Durable, long lasting finish that does not spread under traffic loading



# ULTIPATCH THERMOLINE



Durable, preformed thermoplastic used to lay permanent lines on asphalt surfacing.

## Product Benefits

- Easy to use
- Cost effective
- Rapid curing time - minimal return to service time



# ULTIPATCH LINEMASTER



Durable quick drying paint for marking hazard warnings, identification of underground services and repair planning.

## Product benefits

- Easy to use
- Cost effective
- No specialist equipment required
- Rapid curing time - minimal return to service time



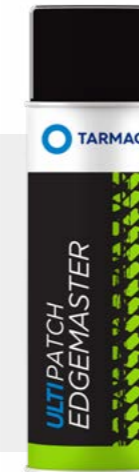
# ULTIPATCH EDGEMASTER



High bond bitumen tack coat and sealer for use in conjunction with Ultipatch cold lay repair and reinstatement materials.

## Product Benefits

- Waterproof
- All weather application
- Instantly seals cracks



# ULTIPATCH OVERBANDING



Thermoplastic overbanding tape designed to protect and prolong the lifespan of repairs and reinstatements.

## Product benefits

- BBA HAPAS approved
- Fully compliant to SROH
- Proven to prevent frost damage and increase durability



Also available from Tarmac Specialist Products

## pozament. Construction grouts

The Pozament range of high-performance construction grouts have been designed specifically for pouring or pumping under base plates.

This makes them ideal for use in a range of highways applications such as installation of bridges, gantries, column bases, railing bases and signage posts.

### Product benefits

- High ultimate strength (up to 90N/mm<sup>2</sup> for the high strength product)
- High fluidity - can be pumped or poured
- Shrinkage compensated to reduce risk of cracking
- Chloride free - use safely in contact with steel reinforcement
- Can be used for grouting sections up to 100mm thick

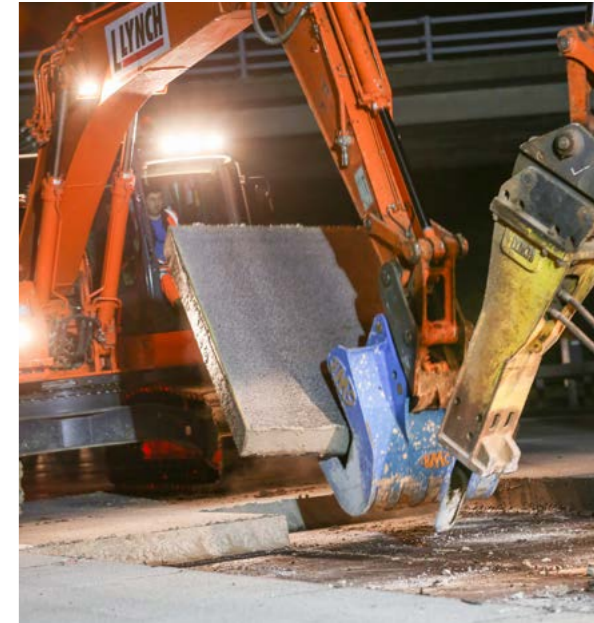


## pozament. PQ-X Cement

PQ-X Cement is a quick setting ultra-rapid strength gain cement for use in producing concrete for the rapid construction, repair or replacement of concrete roads and infrastructure where time is limited.

### Product benefits

- Ultra-rapid strength gain
- High Ultimate strength
- Low shrinkage and dimensional stability
- Various consistencies available to allow direct, skip or pump placement
- Low surface absorption and oxygen permeability
- High chloride and sulphate resistance
- High freeze thaw resistance



# Tarmac Specialist Products

Tarmac is the UK's leading sustainable building materials and construction solutions business. Within excess of 400 strategically located sites throughout the UK and the support of global parent company CRH, our business addresses what is currently the single biggest challenge of modern day construction; security of supply.

Whether it's the availability of raw materials or making sure you consistently get the best possible product exactly when you need it to meet your project's programme time, Tarmac as a business has the infrastructure, expertise and procurement network to ensure we fulfil our commitment to your business.

## SPECIALIST PRODUCTS

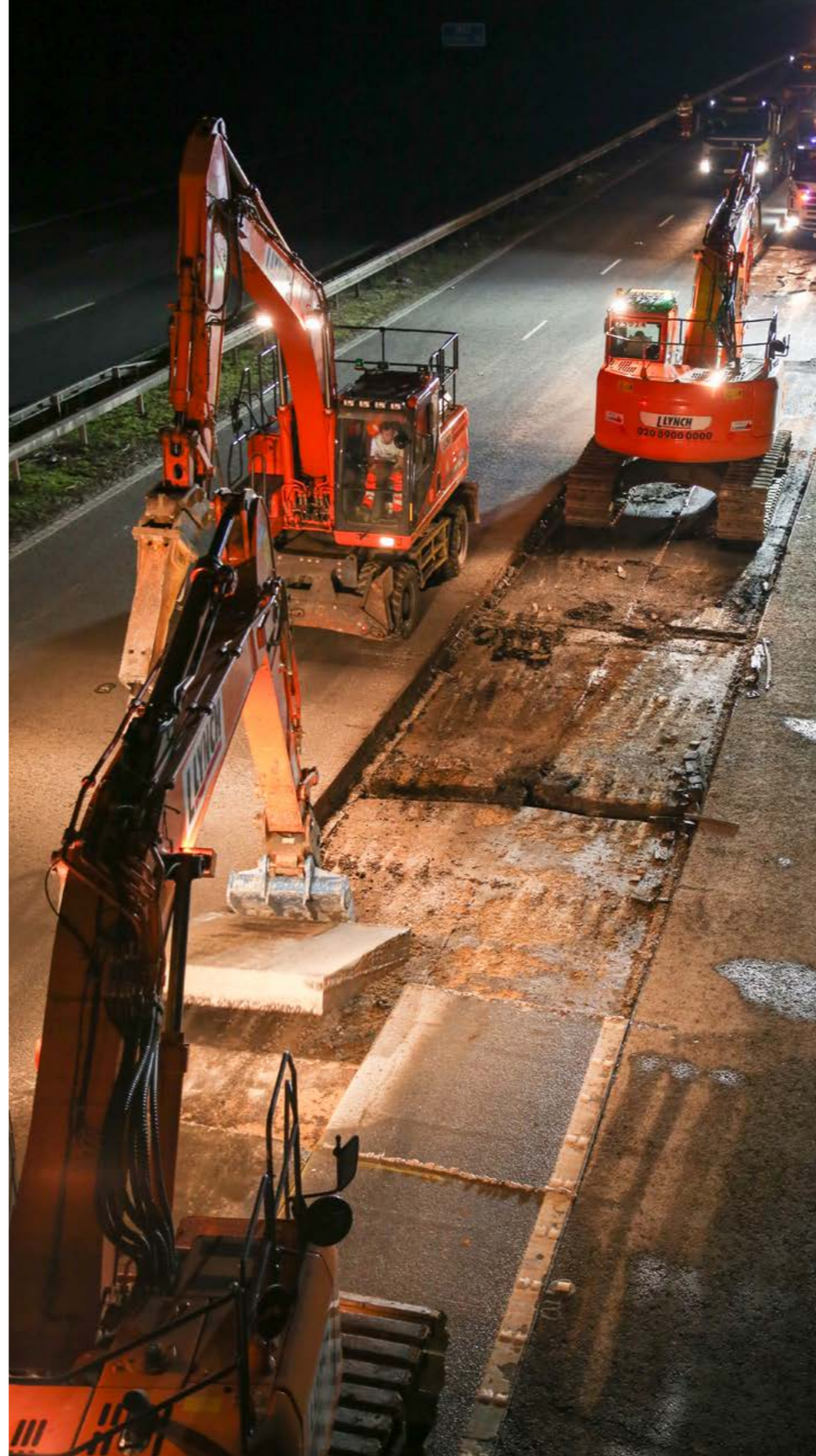
Tarmac Specialist Products manufacture and deliver a high quality range of products to meet a wide range of applications and specifications.

The Tarmac Specialist Products dedicated R&D team are constantly evaluating product performance and working on innovation, whilst their rigorous quality control

standards ensure we lead the industry in product consistency and performance. So, whether you need a specialist tunnel grout or a rapid set concrete, our formulations help you achieve outstanding results - quickly and safely.

Over the last 30 years we have supplied specialist materials to many projects of national significance including a rapid set, high strength flowing concrete to the London Underground and a specially formulated screed that was required to be pumped to the 52nd floor of The Shard building in central London.

Our dedicated customer service team can assist you in selecting the right product from our range, whilst ensuring you receive all the technical support and advice you need.



Pozament has long been recognised as a market leading grout manufacturer and has an extensive portfolio of grouts for general construction, highways, rail, tunnelling, mining and underground construction applications.

Over the last 30 years Pozament has supplied several projects of national significance including tens of thousands of tonnes to the Channel Tunnel Rail Link and the supply of a set accelerated, polymer modified anti-washout grout for large scale repairs to Glasgow's subway tunnel linings.

For sales and technical support contact the Tarmac Specialist Products team on:

**03444 630 046**

[specialistproducts@tarmacbp.co.uk](mailto:specialistproducts@tarmacbp.co.uk)