

NightSearcher Portable Area Lights



NightSearcher Portable Area Lights

CO₂
**ZERO
EMISSIONS**

**ZERO
FUEL COST**

**ZERO
NOISE**

**ZERO
FUMES**

The portable lighting range has evolved to bring lighting solutions to every professional industry. They serve the police, fire and rescue services, defence, hire and the utility sector and many professional customers where performance, reliability and safety are required.

All solutions feature high performance Lithium-ion cells and LiFePo4

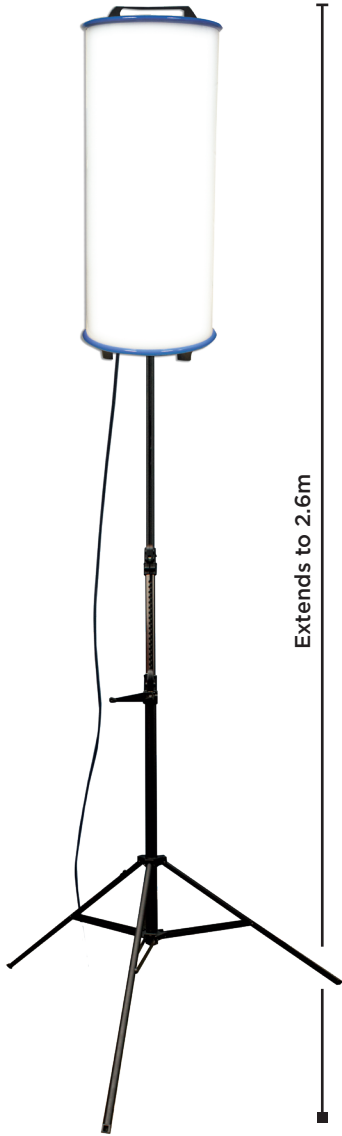
- Ultra lightweight and high energy density
- Maintenance free rechargeable battery
- No Fuel spills & No Fumes = maintenance free
- Batteries comply with UN38.3
- All products have battery charge status indicator
- Green technology with no carbon emission



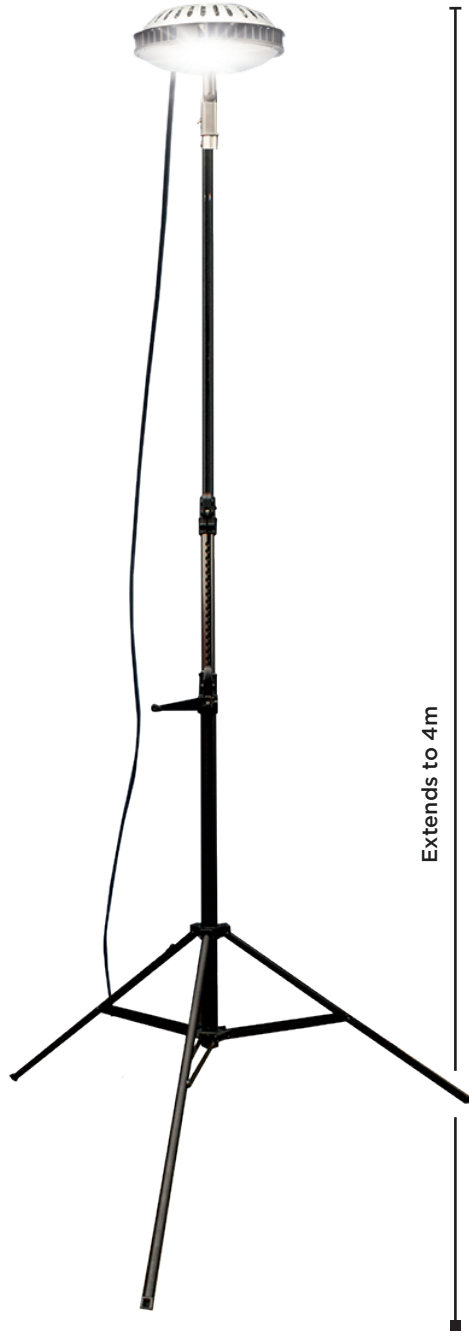
| | Galaxy Pro 6K | TwinStar Connect | Tower Pro 10K | Solaris Pro Solaris Pro X | |
|-------------|--------------------------|--------------------------------------|---------------------------|---------------------------------------|---------------------|
| | 6000 Lumens | 12,000 Lumens | 10,000 Lumens | 16,000 Lumens | |
| | Up to 60m beam | Up to 50m beam | Up to 110m beam | Up to 500m beam | |
| | 2.5 to 60 hours | 1.5 to 8 hours | 1.5 to 5 hours | 2.25 to 24 hours | 4.5 to 48 hours |
| MODE | High Medium Low Dimmable | High Medium Low | High Medium Low | Boost (Search+Flood) Search Flood | |
| | Lithium-ion 7.4V 13.2Ah | Multi-Brand Power tool Battery Packs | Lithium-ion 14.4V 4000mAh | 14.8V 18.2Ah Li-ion | 14.8V 36.4Ah Li-ion |
| | 8 Hours Charging | - | 4.5 Hours Charging | 6 hours charging | 8 hours charging |
| | IP54 | IP54 | IP54 | IP65 | |
| | 310 x 350 x 285mm | 475 x 170 x 140mm | 150 x 150 x 2200mm | 517 x 155 x 220mm | |
| | 1.5kg | Light: 1.8kg Tripod: 2.1kg | 5.5kg | 7kg | 8.5kg |
| CODE | NSGALAXYPRO-6K | NSTWINSTAR-C | NSTOWERPRO-5K | NSSOLARISPRO | NSSOLARISPRO-X |



“Think Zero” and “Think Green” ethos highlights the benefits of portable rechargeable solutions and the vital role they’ll both play for years to come. Zero emissions, zero cables, zero noise, all encompass our product range in the drive for a greener, safer and sustainable environment for us all.



Extends to 2.6m

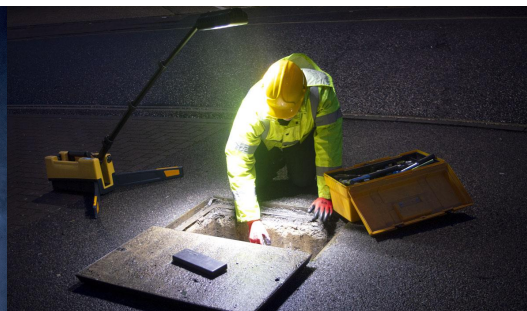


Extends to 4m



Extends to 4.5m

| | Lunar Star 28K | Lunar Star 40K | StratoStar StratoStar X | |
|-------------|-----------------------------------|-----------------------------------|--------------------------------|----------------|
| | 28,000 Lumens | 40,000 Lumens | 115,000 Lumens | |
| | 360° beam | 360° beam | 180-360 degree adjustable beam | |
| | Continuous Full AC Power | Continuous Full AC Power | 3 to 48 hours | |
| MODE | High | High | High Medium Low Dimmable | |
| | Optional GenZero LFP 600-3000W | Optional GenZero LFP 600-3000W | 18Ah LifePO4 | 30Ah LifePO4 |
| | 110 - 230V AC | 110 - 230V AC | 8 hours charging | |
| | IP54 | IP54 | IP67 | |
| | 820 x 265mm Ø | 200 x 400mm Ø | Light head: 438 x 290mm | |
| | 8.5kg | 7.8kg | 45.3kg | 50.8kg |
| CODE | NSLUNARSTAR28K | NSLUNARSTAR40K | NSSTRATOSTAR | NSSTRATOSTAR-X |





5 YEARS WARRANTY*



- AC Charging
 - Available in 230V or 110V



Typical uses:



- 230V or 110V models available
- RCBO protection
- Ultra-rugged case with Lifetime Warranty
- Pure Sinewave output
- 3000+ Cycles Life Expectancy
- LCD Display Controller
- Fan assisted cooling
- IP67 Waterproof case

| | | GenZero 3000W | GenZero 1500W | GenZero 600W |
|--------------------------|-------------------------------|---|----------------------|--------------|
| TECHNICAL SPECIFICATIONS | Continuous Output | 3000W | 1500W | 600W |
| | Peak Output | 6000W | 3000W | 1200W |
| | Battery Capacity (Wh) | 1540Wh | 922Wh | 615Wh |
| | Battery Type | LiFePO4 | | |
| | Charging Time | 4 Hours | 2 Hours | 3 Hours |
| | Ingress Protection | IP67 | | |
| | Storage/Operating Temperature | -10 TO 45 °C | | |
| | Charge Methods | AC mains (Supplied) • Solar panel charger or Vehicle charger (Optional) | | |
| | AC Output Voltage | Select: 110V or 230V | | |
| | USB Outputs | 1 x USB + 1 x USB-C | | |
| | Life Of Battery | 3000+ cycles | | |
| | AC Charger Supplied | 10A | 10A | 5A |
| | NET Weight | 31.8kg | 18.2kg | 12.5kg |
| Dimensions | 579 x 465 x 297mm | 505 x 409 x 257mm | 429 x 328 mm x 236mm | |
| Product Code | GENZERO-3000W | GENZERO-1500W | GENZERO-600W | |

Optional Expandable Battery Packs



- Add more power 1540Wh each
- 4 Hours charging time
- Up to 8 Additional, Capacity 13860 (Wh)
- Battery Type: LiFePO4
- 3000+ Cycles Life Expectancy
- Weight: 18kg each
- Dimensions: L429 x W328 x H236mm



NightSearcher Ltd

Unit 4, Applied House, Fitzherbert Spur
 Farlington, Portsmouth, PO6 1TT, UK
 T: 023 9238 9774
 E: sales@nightsearcher.co.uk
 W: www.nightsearcher.co.uk

