



GAP
GROUP

HIRE SOLUTIONS

LIFTING

PRODUCT CATALOGUE



TEST, INSPECT & CERTIFY

Test, Inspect & Certify

It is a legal requirement that lifting, safety and other work equipment be inspected on a periodic basis by a competent person.

GAP has a network of Lifting depots nationwide, with our team of Mobile Engineers working across the country offering national coverage for inspecting, testing, installing, repairing, and maintaining customer-owned equipment. Our Lifting Division is fully Lifting Equipment Engineers Association (LEEAA) Accredited and each of our Mobile Engineers has the skills and experience to be deemed competent in accordance with regulation. Our repair, maintenance and testing facilities are also available at every Lifting depot nationwide. This service allows for peace of mind that you are using equipment that is safe and fit for purpose.

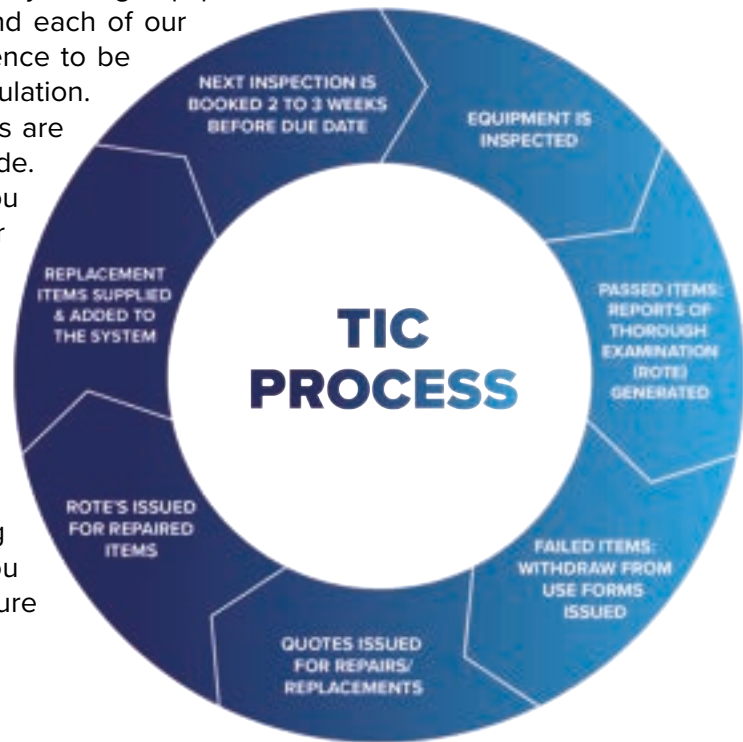
Test

For some equipment, a load test is required before it is legally permitted to enter service. Our dedicated team of experts can test Runway Beams, Lift Shaft Beams, Swing Jibs, Eyebolts, Davits, Sockets and more. You can rely on our skilled professionals to ensure the safety and reliability of your equipment.

Inspect

The TIC Team completes over 100,000 inspections per year in accordance with LOLER/PUWER/PPE regulations. Our team will proactively contact you, providing ample notice to book an engineer, and handle all aspects associated with managing the inspection of your equipment. This ensures a hassle-free experience for you.

For professional advice on any technical or legislative requirements for lifting equipment testing, simply call 0333 202 2627 or email tic-enquiries@gap-group.co.uk.



Certify

Certification is available instantly via our 'TIC Online' website which includes user-friendly features including searching by item, site, and equipment type. Our team also enables failed equipment to be quoted for repair and replacement efficiently, minimising downtime. Purchased equipment is also added to the system with the manufacturer's declaration of conformity attached, ensuring traceability from the day the item enters service.

Additional Services

On top of Test, Inspect and Certify, our skilled team also offer a range of additional services from our depots, nationwide.

- Supply
- Repair
- Servicing
- Design & Fabrication
- Installation
- Vehicle Tail Lifts & Winches – Inspection & Service
- Overhead Cranes – Inspection & Service
- Lift Shafts – Installation and Testing of Eyes and Beams
- Supply and Installation of Fall Protection Systems
- Weighing and Centre of Gravity Reporting
- Calibration of Load Measuring Equipment





ACCESS

& SAFETY

Access Cage

A two-person access cage is used for safety and reliability for maintenance and elevated work. GAP's access safety cages are suitable for use with a forklift truck or crane, and are fitted with extra safety devices including a safety chain and clamp bolt. They also come equipped with a practical tool tray and harness attachment points.

- Built in conformance with official labour safety regulations
- Fully complies with BS EN 14502-1 and PM28
- Chains for access cages should not be used for any other application and should be secured directly to the cage, not via hooks

Code	LD1130	LD1131	LD0744
Description	Universal Access Cage	Access Cage (Fork Lift)	Stretcher Cage
Cage Dimensions L x H x W	1300mm 2250mm 1000mm	1090mm 2080mm 1240mm	2570mm 2130mm 770mm



Roof Man Anchor

The Roof Man Anchor is designed to provide safety where guardrails are not provided. This one-man system is simple to set up, making it ideal for short-term maintenance tasks on flat-pitch roofs up to 5°, or for installing plant and equipment at roof level. The anchor is for use with retractable fall arrest systems and harnesses.

- Suitable for EPDM, Bitumen and PVC
- Complies with EN795E/2012

Code	LD0760	LD0395
Description	Mobile Man Anchor	Ground Anchor



Stretcher Kit

A robust, compact and lightweight stretcher. The flexible material combined with a smooth finish allows easy sliding and permits the stretcher to be rolled widthways or lengthways to facilitate transport. No webbing passes under the stretcher preventing damage while dragging.

Code	LD0768
Description	Stretcher Kit
Dimensions L x W	2300mm x 915mm
Max User Weight	400kg



Safety Harness & Lanyard

In a work situation where there is potential to fall, a full body harness must be worn. Our lanyards are strong and durable and are available in lengths up to, but never exceeding, 2m.

Harnesses and lanyards vary depending on the work task to be carried out, so ensure you select the correct one determined by conducting a relevant risk assessment. If in doubt, call our specialist team on 0844 251 1210 for advice on which model is best suited to your needs.



Code	LD0731	LD0732	LD0737	LD0730	LD1714
Description	Shock Absorbing Lanyard	Restraint Lanyard – Adjustable	Rescue Harness	Safety Harness	Temporary Lifeline 20m

Fall Arrest Block

A Fall Arrest Block with a self-retractable cable. It is integrated with a locking device and an energy dissipation element.

- Fully automatic
- Requires no adjustment by user
- Retractable webbing for use on terrace roofs
- For vertical and horizontal use

REMINDER: You will need to anchor this item



Code	LD0750	LD0751	LD0752	LD0753	LD0754	LD0755
Description	Fall Arrest Block 5m	Fall Arrest Block 6m	Fall Arrest Block 10m	Fall Arrest Block 15m	Fall Arrest Block 18m	Fall Arrest Block 33m

Confined Space Package

We can offer Confined Space Packages which include the following items:

- Rescue Harness (LD0737)
- Gas Detector (SD021)
- Aluminium Tripod (LD0740)
- Escape Set – 10 or 15 Minute (SF006)
- Recovery Winch (LD0741)
- Man-Riding Winch (LD0773)

For more information email lifting@gap-group.co.uk

Portable Counterbalance Davit System

With a safe working load of 120kg-205kg, the Portable Counterbalance Davit System is ideal for work where access to a modular system is not available. As well as portable, it is flexible and modular, which makes it suitable for use in a wide range of applications and environments.

- Composed of a central base unit to accommodate a variety of anchorage options
- Independent adjustable legs for uneven ground
- 5-piece modular system allowing manual installation
- Suitable for confined spaces
- Trench Box/Sheet Davits can be added to this system

LD1733

REMINDER: Do you need a fall arrest block?



LD1797



Code	LD1733	LD1797	
Description	Counterbalance Davit System	Trench Sheet Davit (Up to 5")	Trench Box Davit (2 ¼" - 25")

Safety Tripod & Winch

The Safety Tripod and Winch are a temporary option for gaining access to confined spaces such as wells, sewage systems etc. The tripod is made from aluminium and its feet are swivel-mounted and equipped with anti-slip pads. The winch provides extra safety when lifting or pulling a load.

- Can be used by one or two people weighing up to 150kg each
- Combined weight of tripod and winch is 25kg
- VED system ideal for multi-entry locations
- Suitable for materials lifting up to 500kg
- Complies with EN795B and machinery standards 98/37/CE

LD0740



Code	LD0737	LD0740	LD0741	LD0773
Description	Rescue Harness	Aluminium Tripod	Recovery Winch – 18m	Man-Riding Winch

Gas Detector

Gas Detectors constantly monitor the atmosphere for dangerous levels of gas and are designed for reliability in life-threatening environments.

The 4 Gas Detector offers simultaneous monitoring of up to four gases (H₂S, O₂, CO₂ and flammables). It is housed in a rugged, ultra-compact case that is perfectly suited for confined space entry, petrochemical, water companies and a wide range of other applications that require gas monitoring.

- Hi-vis design perfect for darker conditions
- Features audible, visual and vibrating alarms

Code	SD021
Description	Gas Detector 4 Gas

Escape Set

With the danger already associated with confined spaces, escape sets (also known as breathing sets) give extra peace of mind and can save lives. The cylinder contains air, which automatically activates once the pressure reducer valve is triggered upon opening the carry bag.

- They enable rapid escape in toxic or low-oxygen air
- Users of breathing apparatus equipment must be trained
- Duration whistles activated when air is depleted
- 10 minute escape set activated by opening the bag
- Extra charge for re-gas and sterilisation

Code	SF006	SF007
Description	Escape Set 10 Minute	Escape Set 15 Minute

SD021



CLUB
150



SF006



CLUB
150



CAN'T FIND WHAT YOU NEED?

Scan to find your local depot and we'll get it sorted.





CABLE HANDLING

Sheave Blocks

A lifting accessory designed to redirect the direction or point of application of a force applied to a rope. Made from high-tensile steel and featuring an easy side opening, they enable the lifting of heavy loads by providing a mechanism for applying force to the load in a controlled manner. Our Sheave Blocks are available in a variety of sizes and designs, depending on the specific application and load requirements.

- Suitable for using with wire ropes
- One week minimum hire

Single Sheave Blocks

Code	LD0388	LD0389	LD0390
Description	Single Sheave Block 2t	Single Sheave Block 4t	Single Sheave Block 8t
SWL	2t	4t	8t

Cable Pulling Winch

Cable Pulling Winches are used for the installation of various cable pulling jobs as well as safely handling long lengths of cable. This 110V winch has operational pulling capacities of 1500kg and 2500kg (dependent on drum size).

It can work in both forward and reverse modes. There is also an option for dual speed ensuring it has overload protection built in.

- Compact and lightweight for easy transportation – using either the removable wheels or carry handles
- Foot-controlled for efficient control to leave hands free for cable spooling
- Rope available on sale basis only

Code	LD1672
Description	Cable Pulling Winch

LD0389



LD1672



Lift / Pull Machine

The Lift/Pull Machine, also known as a pull lift, is used to lift, pull and position loads with great accuracy over unlimited distances. The pulling power can be increased depending on the wire rope length and the use of multiple sheave blocks. The machine can be used in numerous configurations with longer wire ropes.

- Portable manual hoists used with wire rope
- Operated by a simple lever option
- Ideal for use in professional applications



Code	LD0370	LD0371	LD0372	LD0373
Description	Lift Pull Machine (800kg)	Lift Pull Machine (1.6t)	Lift Pull Machine (3.2t)	Man Riding Lift Pull Machine
SWL	0.8 tonne	1.6 tonne	3.2 tonne	-

Ropes for 800kg Machine

Code	LD0695	LD0696	LD0697	LD0698	LD0699	LD0700	LD0701	LD0702
Description	Rope 10m Lift/ Pull Machine - 800kg	Rope 20m Lift/ Pull Machine - 800kg	Rope 30m Lift/ Pull Machine - 800kg	Rope 40m Lift/ Pull Machine - 800kg	Rope 50m Lift/ Pull Machine - 800kg	Rope 60m Lift/Pull Machine - 800kg	Rope 70m Lift/ Pull Machine - 800kg	Rope 80m Lift/ Pull Machine - 800kg

Ropes for 1.6 Tonne Machine

Code	LD0703	LD0704	LD0705	LD0706	LD0707	LD0708	LD0709	LD0710
Description	Rope 10m Lift/ Pull Machine - 1.6t	Rope 20m Lift/ Pull Machine - 1.6t	Rope 30m Lift/ Pull Machine - 1.6t	Rope 40m Lift/ Pull Machine - 1.6t	Rope 50m Lift/ Pull Machine - 1.6t	Rope 60m Lift/ Pull Machine - 1.6t	Rope 70m Lift/ Pull Machine - 1.6t	Rope 80m Lift/ Pull Machine - 1.6t

Ropes for 3.2 Tonne Machine

Code	LD0711	LD0712	LD0713	LD0714	LD0715	LD0716	LD0717	LD0718
Description	Rope 10m Lift/ Pull Machine - 3.2t	Rope 20m Lift/ Pull Machine - 3.2t	Rope 30m Lift/ Pull Machine - 3.2t	Rope 40m Lift/ Pull Machine - 3.2t	Rope 50m Lift/ Pull Machine - 3.2t	Rope 60m Lift/ Pull Machine - 3.2t	Rope 70m Lift/ Pull Machine - 3.2t	Rope 80m Lift/ Pull Machine - 3.2t



SCAN HERE

**SLIPS, TRIPS
& FALLS
TRY NOW**

PRODUCED BY

CAP
GROUP

HIRE SOLUTIONS

Cable Drum Jack

Cable Drum Jacks are simple to use while supporting heavy drums of cable. The strong fabricated steel construction makes them a suitable way to lift and support heavy drums of cable as well as reel cables safely, making cable installation and maintenance tasks more manageable. The use of Cable Drum Jacks improve efficiency and ensure safety for various industries where the installation and maintenance of cables are routine operations.

Code	LD1716	LD0108
Description	Cable Drum Jacks 3 tonne (pair)	Cable Drum Jacks 6 tonne (pair)
Closed Height (mm)	530	680
Open Height (mm)	840	990



Cable Rotation Unit / Cable Reel

The rotation unit, also known as a cable reel, offers a simple, safe and effective way to reel wire or cables on heavy drums during electrical installations. The reel can rotate easily while keeping control of the wire to discharge the cable.

- Labour saving device
- Robust to withstand wear and tear

Code	LD0100
Description	Cable Drum Rotation Unit - 2 Tonne



Pull Tension Tester

Pull Tension Testers, or force gauges, are very reliable and test for tension in existing fixtures that you would want to lift. It allows for users to confirm the holding power of anchors in most construction materials, either for establishing safe working loads or to validate the correct installation of existing fixings. These are used in industries like telecommunications, construction, aerospace, and manufacturing, where accurate tension measurement ensures quality and safety.

Code	LD0148	LD0175
Description	Tension Tester 20kN	Tension Tester 30kN





CONCRETE

SKIPS

Tremie Concrete Skip

A heavy-duty concrete column skip for pouring concrete into columns or narrow formwork. The rugged design comes with a lever operated gate requiring a 2-metre discharge hose. Designed to lie down when standing on the ground to assist filling. When lifted, the skip then returns to its vertical position.

- One week minimum hire

Code	LD1661	LD1664	wwLD1685
Description	Tremie Concrete Skip 500L	Tremie Concrete Skip 1000L	Tremie Concrete Skip 2000L
Dimensions L x H x W	220mm 1750mm 750mm	2750mm 2150mm 880mm	3280mm 2650mm 1080mm
Unladen Weight (kg)	290	380	650
Capacity Cubic Metre	0.5	1.0	2.0

LD1661



LD1662



Cone Flow Concrete Skip

A general-purpose skip which is fast and accurate in placing concrete.

Easy concrete flow with good control due to the cone-shaped design and laydown facility to assist filling. When lifted, the skip returns to its vertical position ready for pouring concrete.

- One week minimum hire

Code	LD1662	LD1665
Description	Cone Flow Concrete Skip 500L	Cone Flow Concrete Skip 1000L
Dimensions L x H x W	2300mm 1000mm 1200mm	2790mm 1240mm 1510mm
Unladen Weight (kg)	260	460

Forklift Tipping Skip

The Forklift Tipping Skip is a specialised attachment that is used with forklift trucks for handling and transporting waste or materials. They have a heavy-duty design to meet tough site conditions. The skip is emptied by adjusting the angle of the forks of the telehandler. The hydraulic ram ensures automatic locking of the skip to the forks to prevent slipping. To detach, land the skip and the Autolock will release.

- One week minimum hire

Code	LD1666	LD1667	LD1668	LD1669
Description	Forklift Tipping Skip 500L	Forklift Tipping Skip 750L	Forklift Tipping Skip 1200L	Forklift Tipping Skip 1500L
Dimensions of skip H x W x D	820mm 1460mm 990mm	1020mm 1600mm 950mm	1130mm 1760mm 1300mm	1130mm 1760mm 1500mm
Unladen Weight (kg)	180	200	300	330

LD1668

150
CLUB


Boat Skips

Boat Skips are typically used for collecting and transporting waste and debris away from your site. These skips are designed to withstand harsh conditions, and offer a number of benefits including lower transportation costs and increased efficiency in moving materials to and from construction sites. The lifting bale automatically locks when lifted, allowing the crane driver to manoeuvre and tip the skip without the need for a second operator. Boat Skips play a vital role in construction projects that are situated near waterways.

- Automatic emptying
- One week minimum hire

LD1690



Code	LD1692	LD1693	LD1691	LD1696
Description	Boat Skip Self Discharge 500L	Boat Skip Self Discharge 1000L	Boat Skip Self Discharge 2000L	Circular Muck Skip 100L
Dimensions L x H x W	1470mm 540mm 1320mm	1970mm 650mm 1620mm	2420mm 910mm 1810mm	1200mm 750mm 740mm
Unladen Weight (kg)	130	275	540	90

REMINDER: Hoses are available from all Lifting depots as a sale item



CONVEYORS

& HOISTS

BUMPA and Hoddi Hoists

Make loading heavy tiles to roof height quick and easy with a Bumpa loading machine. Regulations now mandate mechanical handling for repetitive loads, making Bumpa essential for roofers and builders.

- Maximum capacity of 80kg
- Available in electric or petrol versions
- 1,000 tiles can be loaded onto any roof in under 25 minutes

Code	LD1620	LD1621	LD1622	LD1623
Description	Bumpa Hoist 8m Electric	Bumpa Hoist 8m Petrol	Bumpa Hoist 10m Electric	Bumpa Hoist 10m Petrol



Conveyors

These are designed to be simple, flexible and light, but also as robust as possible. A 5kVA transformer is required for this product. Comes with a vulcanised rubber belt, designed to move your loads quickly.

Typical uses include:

- Feeding sand and/or cement into a mixer
- Transporting bricks and other structural materials from the storage or dump area to the building site
- Rubble clearance, particularly in confined spaces

Code	LD1655	LD1656
Description	Conveyor Section 3m 110V	Conveyor Section 4.5m 110V

Ladder Hoists

Efficient, fast, and dependable transport units for interior work, roof repairs, or scaffolding. A reliable option for lifting materials to height, avoiding the typical 'swaying' seen with scaffold hoists. Additional accessories are available.

- 110V power
- Angled sections available 25-60°
- One week minimum hire

Code	Description
LD6000	Ladder Hoist 200kg
LD6001	Ladder Section – 1m
LD6002	Ladder Section – 2m
LD6005	Ladder Hoist – Track Clamp
LD6008	Ladder Hoist – Centre Prop
LD6009	Ladder Hoist – Top Support
LD6012	Ladder Hoist – Gate
LD6014	Ladder Hoist Wheelbarrow Assembly 200kg



Rack & Pinion Ladder Hoists

GEDA material hoists are designed for efficiently transporting scaffolding materials and heavy loads. The rack and pinion hoist system ensures ease of use and fast transportation with a simple button press, relieving the burden of dragging.

Code	Description
LD6100	Ladder Hoist (R&P) 200kg
LD6200	Ladder Hoist (R&P) 300kg
LD6220	Ladder Hoist (R&P) 500kg

LD0600



150
CLUB

LD1600



Builder's Gantry Hoists / Scaffold Hoists

Builder's Gantry Hoists make lifting loads up to 500kg on-site easy and efficient. With a fast lifting speed of 19m/min, this complete package is ideal for increasing productivity and offers an exceptional return on investment by allowing your team to conclude jobs quicker and more efficiently. The Gantry is easy to setup and includes a kick plate to avoid accidental kicking of materials from between the legs of the frame off the building.

The Scaffold Hoist's heavy-duty design makes it ideal for use in industrial/construction applications and is mounted on to a scaffold. It is portable for easy transportation and simple to erect. It comes complete with a minimum of 25m wire rope length.

- 110V single phase
- Accessories available

Code	LD0600	LD1600	LD1601	LD0605	LD1602	LD1603	LD1610
Description	Scaffold Hoist 200kg	Builders Gantry Hoist 300kg	Builders Gantry Hoist 500kg	Wheelbarrow Chain Sling	Bucket 45L	Bucket 90L	Hand Test Weight 20kg

Niko Runway Scaffold Support

The "Niko" Runway Scaffold Support provides a solution for lifting and moving loads throughout a scaffolding support structure.

- Clamps to existing scaffolding structure
- Lift and moves loads up to 2000kg

LD4002



Code	LD4015
Description	Niko Runway Scaffold Support



JACKING

Low Height Cylinders

The grooved rod top allows for improved load grip. The two threaded holes for mounting a tilt saddle are used where there is a danger of side loading.

- Compact, flat design for use where other cylinders will not fit
- Hard chrome plated high-quality steel plungers
- Single-acting, spring return



Code	LD0127	LD0128	LD0129	LD0130	LD0131
Description	Low Height Cylinder 10 tonne	Low Height Cylinder 20 tonne	Low Height Cylinder 30 tonne	Low Height Cylinder 50 tonne	Low Height Cylinder 100 tonne
Closed Height	88mm	98mm	117mm	122mm	141mm
Stroke	38mm	45mm	62mm	60mm	57mm

General Purpose Cylinders

Also known as heavy-duty hydraulic cylinders, these are versatile due to the thread on the body, in the rod, and in the base. Suitable for use in harsh environments and in open air. Design allows cylinder to be used in all positions.

- Heavy-duty return spring for fast retraction
- External access to fasteners for simplified maintenance
- Plunger wipers reduce contamination, extending cylinder life
- High-strength alloy steel for durability
- Collar threads, plunger threads and base mounting holes enable easy fixture on most models



Code	LD0137	LD0139	LD0140	LD0145
Description	GP Cylinder 5 tonne x 202mm	GP Cylinder 10 tonne x 120mm	GP Cylinder 10 tonne x 245mm	GP Cylinder 25 tonne x 354mm
Closed Height	202mm	120mm	245mm	354mm
Stroke	125mm	50mm	150mm	250mm

Hydraulic Hand Pump and Hoses for General Purpose

Code	LD0115	LD0156	LD0157	LD0158
Description	Hydraulic Hand Pump 2 litre	Hydraulic Hose 2 metres	Hydraulic Hose 3 metres	Hydraulic Hose 6 metres

Hydraulic Toe Jacks

These hydraulic jacks have an internal relief valve used to lift and lower heavy loads to prevent overloading in confined work spaces. Suitable for use in heavy-duty environments with its single mechanism operating both the pump and the release valve.

- Machine-flat front and bottom surfaces permit flush alignment in tight corners
- Pumping handle included



Code	LD1015	LD1016	LD1000	LD1001	LD1002	LD1003	LD1004	LD1005	LD1007
Description	Hydraulic Steel Toe Jack 5 tonne (360')	Hydraulic Steel Toe Jack 10 tonne (360')	Hydraulic Jack 6.5 tonne x 131mm	Hydraulic Jack 20 tonne x 275mm	Hydraulic Jack 20 tonne x 464mm	Hydraulic Jack 30 tonne x 281mm	Hydraulic Jack 30 tonne x 470mm	Hydraulic Jack 60 tonne x 325mm	Hydraulic Jack 100 tonne x 310mm
Closed Height	368mm	420mm	131mm	275mm	464mm	281mm	470mm	325mm	310mm
Stroke	200mm	230mm	76mm	152mm	305mm	152mm	305mm	152mm	152mm



Hydraulic Bottle Jacks

A steel and cast-iron construction with an easy-to-use hydraulic jack. Used in many different industries for a variety of lifting jobs. The one-piece base, cylinder and reservoir eliminate any potential leaks. Can be used in horizontal position with the pumping unit located below the cylinder.

- Supplied with handle, operating lever and sturdy box
- Fitted with a stroke-limiting device and safety valves

Code	LD1100	LD1101	LD1102
Description	Bottle Jack 5 tonne	Bottle Jack 10 tonne	Bottle Jack 20 tonne
Closed Height	200mm	241mm	270mm
Stroke	121mm	149mm	159mm

Pad Ram

These have collar threads, plunger threads and base mounting holes for easy fixing (on most models). Used in conjunction with hydraulic hand pumps.

- Baked enamel finish for increased corrosion resistance
- Removable hardened saddles protect plunger during lifting and pressing
- Built-in safety valve prevents accidental overpressure
- Plunger wiper reduces contamination, extending cylinder life



Code	LD0117	LD0118	LD0119	LD0120	LD0121
Description	Pad Ram 5 tonne	Pad Ram 10 tonne	Pad Ram 20 tonne	Pad Ram 30 tonne	Pad Ram 50 tonne
Closed Height	33mm	43mm	52mm	59mm	68mm
Stroke	6mm	10mm	10mm	10mm	15mm

Hollow Cylinder

Equipped with a smooth hollow saddle and a center hole, with threading on the body, rod, and base for easy mounting of accessories. The hollow plunger design accommodates both pull and push forces.

- The end of stroke nut has a wiper to prevent the build-up of dirt
- A safety valve connected to the retract chamber prevents any overpressure
- Baked enamel finish for increased corrosion resistance – suitable for use in harsh environments
- Collar threads for easy fixturing



Code	LD0150	LD0151	LD0152
Description	Hollow Cylinder 10 tonne	Hollow Cylinder 20 tonne	Hollow Cylinder 30 tonne
Closed Height	120mm	162mm	178mm
Stroke	42mm	49mm	64mm

A close-up photograph of a blue mechanical hoist or pulley system. Several heavy-duty silver metal chains are attached to the bottom of the hoist, hanging down. The background is blurred, showing more of the machinery and the chains. The lighting is dramatic, with strong highlights and deep shadows.

MANUAL & POWERED LIFTING

Manual Chain Hoists

Hand-operated heavy-duty chain hoists.

- Industrial safety catches
- Swivel hooks top and bottom

Code	Capacity (kg)	Height of Lift (m)
LD0001	500	3
LD0002	500	6
LD0003	500	9
LD0004	500	15
LD0006	1,000	3
LD0007	1,000	6
LD0008	1,000	9
LD0009	1,000	15
LD0011	2,000	3
LD0012	2,000	6
LD0013	2,000	9
LD0014	2,000	15
LD0016	3,000	3
LD0017	3,000	6
LD0018	3,000	9
LD0019	3,000	15
LD0020	5,000	3
LD0021	5,000	6
LD0022	5,000	9
LD0023	5,000	15
LD0024	10,000	3
LD0025	10,000	6
LD0026	10,000	9
LD0027	10,000	15
LD0028	15,000	3
LD0029	15,000	6

Electric Chain Hoist

Reduces the manual effort required when lifting. Located outside the load path is the clutch, preventing load from slipping in an overload condition when the brake is not powered.

- Easy to access control panel
- Other sizes available on request

Code	LD0060	LD0064	LD0068	LD0073	LD0076	LD0079
Description	0.5 tonne x 6m	1 tonne x 6m	2 tonne x 6m	3 tonne x 12m	5 tonne x 6m	10 tonne x 12m

Lever Hoists

Used for lifting and pulling loads up to a specific height.

- Available from 250kg to 9 tonnes
- Standard length of chain is 1.5m but we can supply longer if required
- Industrial safety catches

Code	LD0300	LD0301	LD0302	LD0304	LD0305	LD0306	LD0307
Capacity (kg)	250	500	750	1,500	3,000	6,000	9,000



110V Electric Minifor

- Used for lifting or pulling, this hoist is ideal for construction applications such as scaffolding, engineering, manufacturing or elevator installations.
- The top attachment fits directly onto a scaffold or any other anchor point.
- Longer rope lengths are available at our Lifting depots
- No limit to the length of lifting wire rope
- Single-phase or three-phase versions
- Compact, lightweight and easy to handle

Code	LD2131	LD0080	LD0081	LD1647	LD1648	LD1649
Description	Wireless Hoist 500kg	Wire Rope Hoist 300kg	Wire Rope Hoist 500kg	10m Rope Pwd Hoist 500kg	20m Rope Pwd Hoist 500kg	30m Rope Pwd Hoist 500kg



LD0082



Electric Lift Pull Machine

Lightweight machine used to lift and pull loads over large distances depending on the length of the rope. Single-phase, three-phase and pneumatic versions are available. Comes with a reeler for long wire rope.

- Multi-position: adapts to all lifting configurations
- Increase capacities by reeving
- Longer ropes available at all depots

Code	LD0082	LD0277	LD0278	LD1266
Description	Lift/Pull Machine 500kg 110V	Lift/Pull Machine 1000kg 415V	Lift/Pull Machine 3000kg 415V	Lift/Pull Machine Power Pack

LD1670



Lifting Magnets

Heavy-duty lifting magnets designed for lifting and transporting magnetic materials quickly and easily.

- Small footprint of base
- Large ring for connection
- Not suitable for very thin plate sheets

Code	LD1670	LD1671	LD1675
Description	Lifting Magnet 500kg SWL	Lifting Magnet 1t SWL	Lifting Magnet 2t SWL
SWL	500kg	1 tonne	2 tonne

Adjustable Geared Beam Trolley

Enable exact positioning or easy traversing of large loads with either manual or powered hoisting equipment. Excellent controlling features due to machined steel wheels mounted on pre-lubricated, encapsulated ball bearings. The beam runners are adjustable to fit a wide range of beam widths and profiles.

- Range from 1 tonne to 20 tonnes
- Anti-tilt and wheel fracture support devices come as standard



Code	LD0350	LD0351	LD0352
Description	Geared Beam Trolley 1t	Geared Beam Trolley 2t	Geared Beam Trolley 3t

Lifting Clutches

Makes lifting and movement of pre-cast units simple and easy. Manually operated coupler that is compatible with the combination lifting shackle.

- One week minimum hire



Code	LD0805	LD0806	LD0808	LD0809	LD0810
Description	Capston Lifting Clutch 2.5t	Capston Lifting Clutch 5t	Capston Lifting Clutch 10t	Frimeda Ring Clutch 2.5t	Frimeda Ring Clutch 5t

Vertical Plate Clamps

Quick release Vertical Clamps are used in pairs to transport metal and steel constructions in the vertical position.

- Other sizes are available on request
- One week minimum hire

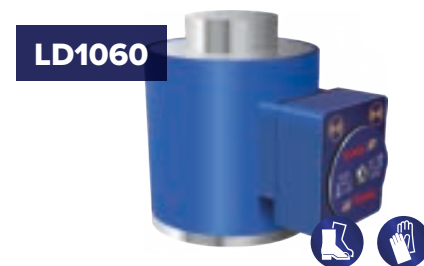
Code	LD0664	LD0665
Description	Vertical Plate Clamp 1 tonne	Vertical Plate Clamp 2 tonne
Plate Size	0-20mm	0-25mm



Wireless Compressive Load Cells

With cable-free technology, large projects are completed faster and at a lower cost, as maintenance and repair expenses are nearly eliminated. The product's flexibility makes it suitable for various applications in heavy lift, energy, defence, rigging, shipping, and transportation.

Code	LD1060	LD1061
Description	10kg Wireless Compressive Load Cells	50kg Wireless Compressive Load Cells



Beam Clamps

Semi-permanent attachment points for manual or electric hoists. Can fit on to most structural beams and can be adjusted for the right positioning. Shackle incorporated for load suspension.

- Easy screw bar to adjust beam widths
- Quick installation on a steel beam
- One week minimum hire

Code	LD0320	LD0321	LD0322	LD0323	LD0324
Capacity (kg)	1,000	2,000	3,000	5,000	10,000
Adjustable Beam Width (mm)	70-245	70-245	70-355	70-355	80-350
Weight (kg)	4.4	5.1	10.5	17	19



Beam Trolley

Enables easy transportation of heavy loads using a manual hoist. The trolley wheels are precision machined and rotate on maintenance-sealed ball bearings.

- Easy screw bar to adjust beam widths
- Bearing on rollers
- One week minimum hire

Code	LD0335	LD0336	LD0337	LD0328
Capacity (kg)	1,000	2,000	3,000	5,000
Adjustable Beam Width (mm)	50-220	66-220	74-220	90-220
Weight (kg)	10.5	18	32	48.5

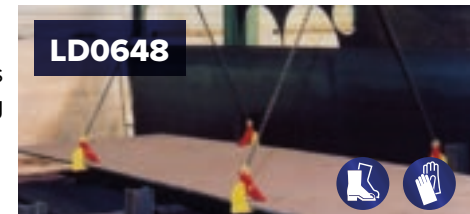


Horizontal Plate Clamps

Paired horizontal plate clamps are perfect for moving single plates and bundles at risk of sagging. The reverse jaw enhances grip on bowed plates, and a locking mechanism is included, suitable for plates with a minimum thickness of 5mm.

- Other sizes are available on request
- One week minimum hire

Code	LD0649	LD0654	LD0650
Description	Horizontal Plate Clamp 1 tonne	Horizontal Plate Clamp 1.5 tonne	Horizontal Plate Clamp 2 tonne



OTHER WEIGHTS OF LIFTS AVAILABLE

Don't see the weight you need? Scan to find your local depot and we'll get it sorted.



Digital Load Indicator

Portable Digital Load Indicator with a hand-held readout (10m lead) and automatic shut-off. Eliminates guesswork in load weighing, with some links able to tare to zero even with a load in place.

- Load links and load shackles can measure from 50kg to 500 tonnes
- Many of the smaller units can be calibrated to 1kg increments
- Radio-controlled models available



Code	LD1050	LD1051	LD1052	LD1053	LD1054	LD1055
Description	Digital Load Indicator 1 tonne	Digital Load Indicator 5 tonne	Digital Load Indicator 10 tonne	Digital Load Indicator 20 tonne	Digital Load Indicator 50 tonne	Digital Load Indicator 100 tonne



Porta Gantry Rapide

Lightweight, versatile lifting solution for goods and personnel. Assembles in under a minute by one person, no bolts or tools required.

- Easily folds to fit in a standard service van
- Includes a convenient storage container for safe transportation
- Tool-free addition of winching options
- Weighs only 31kg

Code	LD8114	LD2510S	LD2513S
Description	Porta Gantry 500kg	Porta Gantry 1000kg with 3m beam	Porta Gantry 1000kg with 4m beam



DID YOU KNOW?
 We have enough hoists
 in the fleet to lift
9 JUMBO JETS

Portable Aluminium Gantries

Lightweight and portable, easily assembled with adjustable legs and various configurations. Features simple span adjustment with 360° locking castor wheels. Includes beam trolley; additional trolleys available. Manual handling compliant (EN795 Certified for Personnel).

Description
1 tonne
2 tonne
2 tonne tall
3 tonne
3 tonne tall
5 tonne
5 tonne tall



Aluminium Gantry Beams

Beam Length						
3m	4m	4.5m	5.5m	6m	7m	8.4m

Aluminium Gantry Trolleys

Code	LD8020	LD8021	LD8022	LD8023
SWL	1000kg	2000kg	3000kg	5000kg

Aluminium Gantry Legs

Code	LD8000	LD8001	LD8002	LD8003	LD8108	LD8004	LD8005
Capacity	1000kg (medium)	2000kg (medium)	2000kg (tall)	3000kg (intermediate)	3000kg (tall)	5000kg (intermediate)	5000kg (tall)
Min Height	2188mm	2188mm	2879mm	2188mm	2879mm	2155mm	2865mm
Max Height	3188mm	3188mm	4079mm	3188mm	4079mm	3155mm	4065mm
Increments	200mm	200mm	200mm	200mm	200mm	200mm	200mm

TC GANTRY NOW AVAILABLE

PORTA Gantry TC range offers all the tested benefits of the standard system but with additional heights of up to 6m.



MATERIALS HANDLING



LD0480 SLK Counterbalance Material Lifts

Flexible and lightweight, the SLK Counterbalance Material Lift is designed to allow lifting of materials up to walls and other surfaces.

- Specific attachments available for lifting glass sheets

Code	LD0480	LD0483	LD0451
Description	Material Lift Counter Balance 10'	Material Lift Counter Balance 15'	Material Lift Counter Balance 25'
Safe Working Load	450kg	360kg	300kg



LD0452 Panel and Plasterboard Lifter

A purpose-built lift that allows for a practical method of moving panels such as plasterboard, metal piping, ducting and halogen lighting into place. This ensures a safer lift compared to lifting manually on a ladder.

Code	LD0452
Description	Panel Lifting Winch
Safe Working Load	75kg
Height of Lift	4000mm



LD0485 Beam Lifter

A compact, detachable elevator on wheels for lifting and fitting heavy loads such as steel beams. The lift is equipped with a rotational platform and a crane hook to lift loads from the ground. For fitting beams, two elevators should be used.

- Maximum lifting height of 3m
- High precision by using screw thread adjustment

Code	LD0485
Description	Beam Lifter
Safe Working Load	600kg



Gas Material Lifts / Accessories

Code	LD1739	LD1740
Description	Gas Operated Material Lift	Gas Operated Material Lift
Height of Lift	3800mm	5600mm
Safe Working Load	136kg	113kg
Unit Weight	34kg	37kg

Material Lifts

Material Lifts are simple but effective. The design makes lifting and positioning heavy loads easy and efficient, making what would normally be a major task, into a one-man operation, taking a fraction of the time.

- Systems are wheel-mounted and narrow allowing ease of positioning
- Can be moved when extended
- Accessories available

Code	LD0440	LD0441	LD0442	LD0443	LD0444	LD0445
Description	10' Material Lift SLA	15' Material Lift SLA	20' Material Lift SLA	25' Material Lift SLA	8' Material Lift GL	12' Material Lift GL
Height of Lift	3000mm	4500mm	6400mm	7400mm	3000mm	4200mm
Safe Working Load	454kg	363kg	363kg	295kg	181kg	159kg
Unit Weight	118kg	144kg	184kg	204kg	60kg	70kg

LD0444



GML Range

The Wienold Glass and Material Lift makes lifting complicated and heavy materials effortless. The lift is easy to operate and comes with a wide range of accessories which allow for extremely precise positioning when lifting heavy materials. With optional extras, such as a Glass Vacuum Lifter. Ideal for repair, maintenance or installation work.

- Can be moved when extended
- Wheel-mounted for easy positioning
- Adjustable crane booms and handle
- Forklift pockets available
- Three-speed gearbox allows drill operation

Code	LD0473	LD0432
Description	800kg 15ft GML800+ Manual	800kg 20ft GML800+ Manual
Height of Lift	5000mm	6500mm
Safe Working Load	800kg	800kg
Unit Weight	260kg	293kg

LD0432



Glass Suction Grip

Code	LD1725
Description	Glass Suction Grip
Safe Working Load	300kg



LD0811



Manhole Ring Lifter

The manhole ring lifter boasts a robust design, featuring rigid torsion and rugged steel construction, this tool is designed for transporting and placing various shaft elements, including rings, cones, bases, and covers. It comes equipped with an automatic release mechanism, enabling independent operation without the need for an assistant, allowing operators to effortlessly position and manoeuvre heavy manhole components with precision and control.

Code	LD0811
Description	Manhole Ring Lifter
Safe Working Load	2.5 tonne



LD1071



Manhole Pipe Lifting Pins

A range of pins for all your lifting and concrete requirements.

- All Manhole Pipe Lifting Pins come in a set of three
- One week minimum hire on all pins

Code	LD1070	LD1071	LD1072	LD1073
Description	Manhole Pipe Lifting Pins 2.25 tonne	Manhole Pipe Lifting Pins 3 tonne	Manhole Pipe Lifting Pins 4.5 tonne	Manhole Pipe Lifting Pins 6 tonne
Shaft Diameter	25mm	32mm	35mm	38mm

LD0800


150
CLUB


Manhole Cover Lifter

A hydraulic machine used for lifting and transporting manhole covers. The hydraulic hand lever allows for quick, safe and easy lifting compared to manual handling.

- Uses a hydraulic cylinder and hand pump
- Can be dismantled and stored easily
- Two and four key versions available

Code	LD0800	LD0816
Description	Manhole Cover Lifter - 1.5t	Manhole Cover Lifter - 3t
Safe Working Load	1.5 tonne	3 tonne

Material Cage

A safe, convenient method of transporting materials to and from high or low levels. Four lifting eyes enable lifting from tower cranes, allowing for difficult materials to be transported in a manner that keeps them secure. Fork pockets are fitted as standard and allow for telehandler lifts on-site. Sturdy construction with front gate for easy loading and 1m high full mesh for security. Fitted with our four fully tested lifting lugs.

Code	LD1132	LD1133
Description	Material Cage 1500kg	Material Cage 3000kg



Gas Bottle Cage

These specially designed lifting cages are the ideal and safer method of transporting gas bottles on-site. They ensure the bottles are kept secure during lifting and an exterior cage helps protect them from any bumps or impacts.

- Comes with lifting eye and base-mounted fork channels
- Can be used with either a forklift or crane
- Holds up to four or six standard oxygen bottles
- Fully enclosed with additional secondary safety device

Code	LD1147
Description	Gas Bottle Cage (4 Bottle)
Bottom Size	4 x 250mm
Length	900mm
Width	600mm
Height	2000mm
Weight	60kg

LD1147



CONSUMABLES

GAP stocks a full range of lifting consumables such as slings, shackles, and hoists. Contact your local depot for enquiries or check the Consumables section at the back of this catalogue.



MODULAR

BEAMS

Modular Spreader Beams

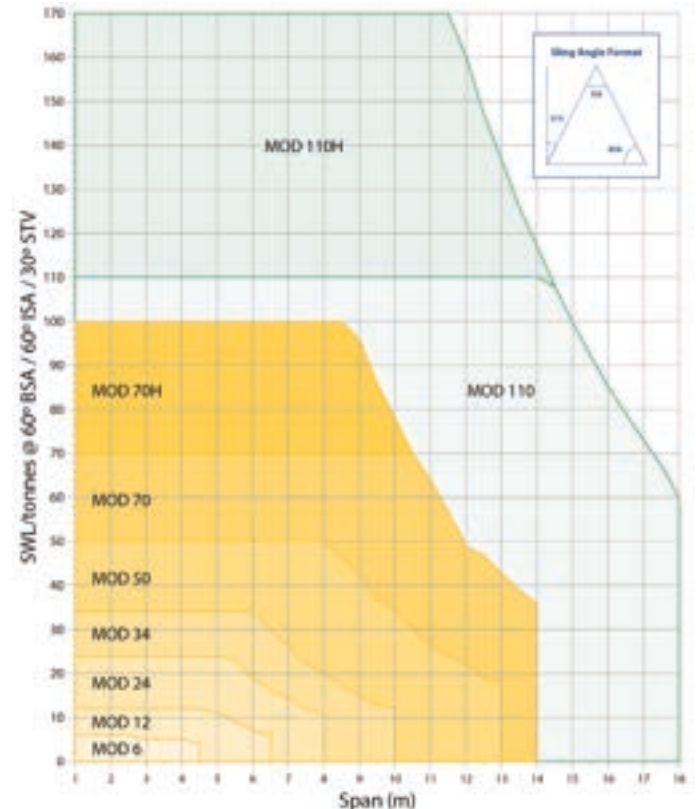
Our Modular Spreader Beams bring you the best in flexibility and value. They are suitable for a wide variety of jobs. They are able to cope with an array of lifts spanning 0.2m to 53m with a weight of 2 tonnes all the way up to 5,000 tonnes.

With the wide range of different beam lengths available, we can supply you with the stock to suit your own individual needs, whatever the job may be.

All pricing for Modular Spreader Beams is based on the particular requirements of your lifting job. All prices will therefore be individually worked out with you, bespoke for each lifting application.



Code	Description
LD5000	MOD 6 Modular Beam End Unit
LD5010	MOD 12 Modular Beam End Unit
LD5020	MOD 24 Modular Beam End Unit
LD5030	MOD 34 Modular Beam End Unit
LD5040	MOD 50 Modular Beam End Unit
LD5050	MOD 70 Modular Beam End Unit
LD5060	MOD 70H Modular Beam End Unit
LD5090	MOD 110 Modular Beam End Unit
LD5093	MOD 110H Modular Beam End Unit
LD6520	MOD 250 Mod Beam End Unit Pair





STONE HANDLING

Concrete Step Grab

A range of adjustable kerb/stone grabs to accommodate a wide range of shapes and sizes of kerb and stone.

Code	LD1115	LD1116	LD1117	LD1120
Description	Concrete Step Grab 200kg	Concrete Step Grab 250kg	Concrete Step Grab 500kg	Concrete Step Grab 1500kg
Jaw Capacities Min (mm)	900	70	50	0
Jaw Capacities Max (mm)	1,065	500	600	750



Crane Fork

The Crane Forks have an automatic centre-of-gravity balance due to a spring-loaded side. This is for lifting and transport by crane with a security chain to prevent the load from slipping off and tipping over.

- Continuously adjustable fork distance from 395mm to 965mm with LG-15 and from 415mm to 965mm with LG-20 (outer)

Code	LD1139
Description	Crane Fork



Gully Hook

The Gully Hook will make road gully handling and installation safer, quicker and easier. Gully Hooks have no working mechanical parts and are easy to use.

Code	LD1885
Carrying Capacity / Working Load Limit	350kg
Dead Weight	5kg

Stone Vacuum Magnet

Heavy-duty battery-operated equipment with two-man control. It can be used with all types of lifting equipment.

- Quick-change suction plates to suit load
- Can handle smooth and rough surfaces
- Allows tight joints with no damage

Code	LD1129
Description	Vacuum Stone Magnet
SWL	400kg



Paving Slab Lifter

Battery-powered dense stone lifter, ideal for handling paving slabs and flat stones into position. With a handle for two-man operation, the height and width can be adjusted to accommodate different laying tasks.

- Various plate sizes available

Code	LD1128	LD1193
Description	Vacuum Slab Lifter 150kg SWL	Wheel Kit Trolley
SWL	150kg	80kg



Industrial Slab/Kerb Lifter

This Industrial Slab/Kerb Lifter is designed to be suspended from the bucket linkage of any equipped excavator. It can be used to place heavier blocks, slabs or short runs of kerbs. It comes with a wheeled stand for storage.

- Supplied with an adjustable vacuum head that can handle more varieties of kerb including 'Bus Stop' kerbs
- Custom-built solutions for specific handling problems are available - please inform your local depot of your requirements

Code	LD1126	LD1194
Description	Vacuum Slab Lifter 1000kg SWL	Vacuum Slab Lifter 2500kg SWL
SWL	1000kg	2500kg



Two-Man Kerb Lifter

A two-man operation for handling a range of kerb stones. The one-sided angular supports, which are placed on the kerb stone already in place, enable an extremely narrow joint. The adjustable opening range means the handles can also be used for all garden and landscape design products.



Code	LD1119	LD1118	LD1271
Description	Kerb Stone Gripper (Mechanical)	Universal Handles	Manual Kerb Lifter 200kg SWL
Jaw Capacities Min (mm)	500	0	700
Jaw Capacities Max (mm)	1,045	400	1,000

Block Grab

A mechanical grab universally suitable for use on building sites engaged in civil engineering and paving work. The Block Grab enables easy transportation of unpalletised building materials, such as vertically strapped paving blocks

- Suitable for pack sizes between 400mm and 1,100mm due to the large variable opening range

Code	LD1136
Description	Block Grab (Full Pallet) 1800kg SWL
Jaw Capacities Min (mm)	400
Jaw Capacities Max (mm)	1,100



Brick and Slab Trolley

For the effortless transportation of bound or loose pavers, kerb stones, slabs and more.

- No need for a ramp
- Narrow build – can be used on the smallest building sites
- Adjustable gripping width from 550mm – 1,050mm

Code	LD1134
Description	Brick and Block Cart
SWL	400kg





TRUCKS & TROLLEYS

Furniture Skate

A range of Skates for moving awkward objects with minimum effort. Two-wheel and four-wheel versions are available.

- Less time consuming
- One week minimum hire

Code	LD1083	LD1081
Description	Piano Skate (4 Wheel)	Furniture Skate
SWL	200kg	40kg



Nylon Machine Moving Skates

Our high-quality Machine Moving Skates will help put your heavy and awkward loads on the move. Steering turntable gives excellent manoeuvrability in tight corners. Nylon skates should only be used on clean, smooth surfaces.

- All Nylon Machine Moving Skates come in a set of three



Code	LD0420	LD0421	LD0422	LD0423	LD0425	LD0424
Description	Nylon Skates	Nylon Skates	Nylon Skates	Nylon Skates	Nylon Skates	Nylon Skates
SWL	6 tonne	12 tonne	20 tonne	30 tonne	60 tonne	100 tonne

Sack Truck

For goods too heavy to manually carry around your office, warehouse or site. They are fitted with composite grip handles for added comfort and stability. Using a Sack Truck can enhance safety by reducing the risk of injuries related to manual lifting.

- Safe working load of 200kg to 250kg
- One week minimum hire

Code	LD1108	LD1109
Description	Sack Truck (Solid Tyre)	Sack Truck (Pneumatic Tyre)



Machine Skates

Ideal for transportation of heavy equipment. Easy assembly by simply jacking up the load and safely positioning the skates.

- All Machine Skates come in a set of four with two turntables, two packers and a steering handle
- Safe working load of 8 tonnes to 100 tonnes
- One week minimum hire

Code	LD0408	LD0410
Description	Machine Skates - 8t	Machine Skates - 20t
SWL	8 tonne	20 tonne



Pallet Skate

For moving bulky goods safely and efficiently. The castors swivel allows for best manoeuvrability.

- Safe working load of 500kg
- Rubber finish meaning non-marking while in use
- One week minimum hire

Code	LD1084
Description	Pallet Skate
SWL	500kg



Machine Moving Trolleys / Skoots

Simple and safe to operate, these lightweight Skoots hydraulically lift loads up to 5 tonnes off the floor on to castors, allowing easy movement in any direction.

- Loads cannot slip or slide off as Skoots are strapped to the item being moved, ensuring safe transportation, even over uneven ground
- Compact for easy transportation

Code	LD1151	LD1152	LD1153
Description	Skoots 2t	Skoots 3t	Skoots 5t
SWL	2 tonne	3 tonne	5 tonne



Turntable Truck

Turntable Trucks can be used to safely move many types of bulky or heavy items that are too awkward to carry unaided. Ideal for manoeuvring in and out of confined spaces.

- Most of our trucks are fitted with solid tyres but pneumatic tyres are available upon request
- T-bar handle for easy towing



Code	LD2840	LD1085	LD1089	LD1288
Description	Turntable Truck - 250kg	Turntable Truck - 500kg	Turntable Truck - 1 tonne	Turntable Truck - 2 tonne

Stair Climbing Trolley

Available as a manual or powered version, this trolley is essential for transporting heavy items up and down stairs when required.

- Fast climbing speed
- One-week minimum hire

Code	LD1090	LD1091	LD1092	LD1093
Description	Manual Stair Climber	Powered Stair Climber	Powered Stair Climber	Powered Stair Climber
SWL	150kg	190kg	310kg	680kg



Board Trolley

For easy transportation of bulky items including plasterboard, timber and other sheet materials, the Board Trolley offers convenience and efficiency. The pivoting front wheels and handles ensure smooth manoeuvrability, allowing users to navigate tight corners with ease.

- Safe working load of 100kg to 350kg
- One week minimum hire

Code	LD0681
Description	Board Trolley – 4 Wheel





Pipe Bogey

For transporting pipes effortlessly around site. With a working load of up to 550kg, the Pipe Bogey will easily transport long lengths of pipes, scaffolding tubes, and steel sections.

- Easy manoeuvrability
- One week minimum hire

Code	LD1080
Description	Pipe Bogey
SWL	550kg

Rubble Truck

Moving general waste when renovating or decorating internal rooms and buildings is simple with this 'tilting' truck. Simply load up, transport, and tilt using the built-in tipping feature to remove waste. Easy to steer and manoeuvre through tight openings.

- One week minimum hire

Code	LD1657	LD2845
Description	Rubble Truck (350kg)	Rubble Truck (750kg)
SWL	350kg	750kg

LD1086



All Terrain Pallet Trucks

For heavy-duty use, ideal for the transportation of palletised goods on building sites. Large rubber wheels assist movement over uneven terrain. Load lifted by manually controlled hydraulic system.

- Compact and manoeuvrable
- The width of the forks can be adjusted to all pallets
- Safe working load of 1200kg

Code	LD1086
Description	Manual All Terrain Pallet Truck

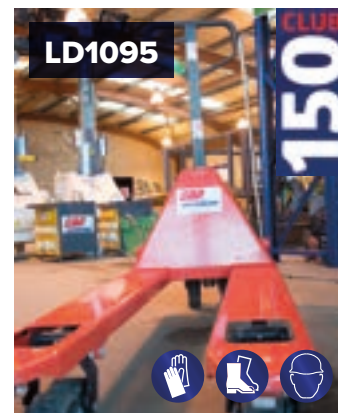


Pallet Truck

Offering a safe and efficient method for transporting goods with minimal effort, these pallet trucks revolutionise material handling. Easy to load and unload pallets of up to 3 tonnes, the powered pallet truck takes the strain away from the operator, making their job as easy as possible.

- One week minimum hire

Code	LD1095	LD1096	LD1097	LD1098
Description	Pallet Truck 2500kg	Pallet Truck Wide 2500kg	Pallet Truck 3000kg	Powered Pallet Truck



Electric Stacker Truck

The Electric Stacker Truck provides a speedy and safe solution for off-loading vehicles. It is very manoeuvrable especially in tight or restricted areas.

- Compact and powerful workhorse
- Uses batteries for power, which need to be charged for use
- One week minimum hire

Code	LD0470
Description	Electric Stacker Truck
SWL	1000kg-1500kg



Counterbalance Floor Crane

Versatile and easy to use, hydraulically powered floor cranes can lift 2 tonnes. Their rugged construction makes them durable performers capable of continuous use.

- Easy to operate with an ergonomic design
- Safe working load of 500kg to 2000kg

Code	LD0400	LD0401	LD0402	LD0406	LD0404	LD0403	LD0415
Description	Floor Crane 500kg	Floor Crane 1t	Floor Crane 2t	Floor Crane 500kg – Counter Balance	Floor Crane 750kg – Counter Balance	Floor Crane 1t – Counter Balance	Mini Floor Crane 750kg



A close-up photograph of industrial lifting equipment. The image features several bright yellow lifting shackles, which are U-shaped metal components used for securing loads. These shackles are connected to thick, dark blue or black heavy-duty chains. The background is a blurred array of more yellow shackles, creating a sense of depth and repetition. The lighting is bright, highlighting the metallic textures and the vibrant yellow color of the shackles.

LIFTING

ACCESSORIES

Alloy Bow/Large Dee Shackles

GAP hires and sells Shackles of all sizes and will happily provide expert advice on application.

- Other sizes and pins are available on request
- One week minimum hire

Alloy Bow Shackles

Code	Description
LD0190	1 tonne
LD0191	2 tonne
LD0192	3.25 tonne
LD0193	4.75 tonne
LD0194	6.5 tonne
LD0195	8.5 tonne
LD0196	9.5 tonne
LD0197	12 tonne
LD0198	13.5 tonne
LD0199	17 tonne
LD0200	25 tonne
LD0201	35 tonne
LD0203	85 tonne

Large Dee Shackles

Code	Description
LD0220	Dee Shackle 1 tonne
LD0221	Dee Shackle 2 tonne
LD0222	Dee Shackle 3 tonne
LD0223	Dee Shackle 5 tonne



LD0222



Chain Slings

GAP supplies heavy duty Chain Slings in single, two and four leg and collar configurations for a variety of applications.

Code	Description	Size	Length	Safe Working Load
LD0925	Single Leg Sling	7mm	3m	1.5 tonne
LD0971	Single Leg Sling	7mm	6m	1.5 tonne
LD0926	Single Leg Sling	8mm	3m	2 tonne
LD0972	Single Leg Sling	8mm	6m	2 tonne
LD0927	Single Leg Sling	10mm	3m	3.15 tonne
LD0973	Single Leg Sling	10mm	6m	3.15 tonne
LD0928	Single Leg Sling	13mm	3m	5.3 tonne
LD0974	Single Leg Sling	13mm	6m	5.3 tonne
LD0929	Single Leg Sling	16mm	3m	8 tonne
LD0975	Single Leg Sling	16mm	6m	8 tonne
LD0930	Single Leg Sling	20mm	3m	12.5 tonne
LD0976	Single Leg Sling	20mm	6m	12.5 tonne
LD0931	Single Leg Sling	22mm	3m	15 tonne
LD0977	Single Leg Sling	22mm	6m	15 tonne
LD0900	Swivel Drop Chain	10mm	1m	3.15 tonne

Code	Description	Size	Length	Safe Working Load
LD0938	Two Leg Sling	7mm	3m	2.1 tonne
LD0980	Two Leg Sling	7mm	6m	2.1 tonne
LD0939	Two Leg Sling	8mm	3m	2.8 tonne
LD0981	Two Leg Sling	8mm	6m	2.8 tonne
LD0940	Two Leg Sling	10mm	3m	4.25 tonne
LD0965	Two Leg Sling	10mm	6m	4.25 tonne
LD0941	Two Leg Sling	13mm	3m	7.5 tonne
LD0949	Two Leg Sling	13mm	6m	7.5 tonne
LD0942	Two Leg Sling	16mm	3m	11.2 tonne
LD0982	Two Leg Sling	16mm	6m	11.2 tonne
LD0943	Two Leg Sling	20mm	3m	17 tonne
LD0947	Two Leg Sling	20mm	6m	17 tonne
LD0944	Two Leg Sling	22mm	3m	21.2 tonne
LD0983	Two Leg Sling	22mm	6m	21.2 tonne

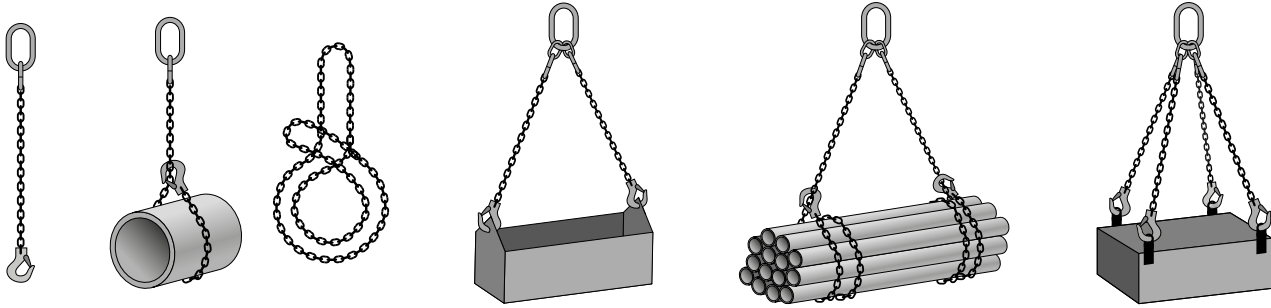
Code	Description	Size	Length	Safe Working Load
LD0950	Four Leg Sling	7mm	3m	3.2 tonne
LD0959	Four Leg Sling	7mm	6m	3.2 tonne
LD0951	Four Leg Sling	8mm	3m	4.2 tonne
LD0960	Four Leg Sling	8mm	6m	4.2 tonne
LD0952	Four Leg Sling	10mm	3m	6.7 tonne
LD0962	Four Leg Sling	10mm	6m	6.7 tonne
LD0953	Four Leg Sling	13mm	3m	11.2 tonne
LD0964	Four Leg Sling	13mm	6m	11.2 tonne
LD0954	Four Leg Sling	16mm	3m	17 tonne
LD0986	Four Leg Sling	16mm	6m	17 tonne
LD0955	Four Leg Sling	22mm	3m	26.5 tonne
LD0987	Four Leg Sling	22mm	6m	26.5 tonne

Code	Description	Size	Length	Safe Working Load
LD0910	Collar Sling	7mm	3m	1.5 tonne
LD0911	Collar Sling	7mm	6m	1.5 tonne
LD0912	Collar Sling	8mm	3m	2 tonne
LD0913	Collar Sling	8mm	6m	2 tonne
LD0914	Collar Sling	10mm	3m	3.15 tonne
LD0915	Collar Sling	10mm	6m	3.15 tonne
LD0916	Collar Sling	13mm	3m	5.3 tonne
LD0917	Collar Sling	13mm	6m	5.3 tonne
LD0918	Collar Sling	16mm	3m	8 tonne
LD0919	Collar Sling	16mm	6m	8 tonne

WARNING: Never exceed the working load limit marked on the sling

All general purpose slings should be rated by the uniform load method as shown in the table

Safe Working Load of Chain Slings



Safe Working Load Limit – Grade 8 Chain

All loads shown in tonnes

Chain Size mm	Single Leg	Choke Hitch	End-less	Two Leg		Two Leg Choke Hitch		Three and Four Leg	
				0°-45°	45°-60°	0°-45°	45°-60°	0°-45°	45°-60°
7	1.5	1.2	2.5	2.1	1.5	1.7	1.2	3.1	2.2
8	2.0	1.6	3.1	2.8	2.0	2.2	1.6	4.2	3.0
10	3.15	2.5	5.0	4.25	3.15	3.4	2.5	6.7	4.75
13	5.3	4.2	8.5	7.5	5.3	6.0	4.2	11.2	8.0
16	8.0	6.4	12.5	11.2	8.0	9.0	6.4	17.0	11.8
20	12.5	10.0	20.0	17.0	12.5	13.7	10.0	26.5	19.0
22	15.0	12.0	23.6	21.2	15.0	17.0	12.0	31.5	22.4
26	21.2	17.0	33.5	30.0	21.2	24.0	17.0	45.0	31.5
32	31.5	25.2	50.0	45.0	31.5	36.0	25.2	67.0	47.5

Safe Working Load Limit – Grade 10 Chain

All loads shown in tonnes

Chain Size mm	Single Leg	Choke Hitch	End-less	Two Leg		Two Leg Choke Hitch		Three and Four Leg	
				0°-45°	45°-60°	0°-45°	45°-60°	0°-45°	45°-60°
6	1.4	1.12	2.2	2.0	1.4	1.6	1.12	2.9	2.1
8	2.5	2.0	4.0	3.5	2.5	2.8	2.0	5.3	3.8
10	4.0	3.15	6.4	5.6	4.0	4.25	3.15	8.4	6.0
13	6.7	5.3	10.6	9.5	6.7	7.5	5.3	14.0	10.0
16	10.0	8.0	16.0	14.0	10.0	11.2	8.0	21.0	15.0
20	16.0	12.8	25.6	22.4	16.0	17.6	12.8	33.6	24.0
22	19.0	15.0	30.4	26.5	19.0	21.2	15.0	39.9	28.5
26	26.5	21.2	42.4	37.1	26.5	29.5	21.2	55.7	39.8

Web Slings

Web Slings available from 1 to 20 tonne. Wear sleeves are available as a sale item.

Code	EWL
LD1300	1 tonne x 1m
LD1301	1 tonne x 2m
LD1302	1 tonne x 3m
LD1304	1 tonne x 5m
LD1305	1 tonne x 6m

Code	EWL
LD1310	2 tonne x 1m
LD1311	2 tonne x 2m
LD1312	2 tonne x 3m
LD1313	2 tonne x 4m
LD1314	2 tonne x 5m
LD1315	2 tonne x 6m

Code	EWL
LD1320	3 tonne x 1m
LD1321	3 tonne x 2m
LD1322	3 tonne x 3m
LD1323	3 tonne x 4m
LD1324	3 tonne x 5m
LD1325	3 tonne x 6m

Code	EWL
LD1333	5 tonne x 3m
LD1334	5 tonne x 4m
LD1335	5 tonne x 5m
LD1341	5 tonne x 6m

Web and Round Slings are flexible, lightweight, and have a wide bearing surface, which helps protect the load you are lifting.

As well as offering a range of slings, we also offer a variety of hooks to support them.

Round Slings

Round Slings available from 1 to 20 tonne.

Code	EWL
LD1155	1 tonne x 2m
LD1156	1 tonne x 4m

Code	EWL
LD1173	2 tonne x 1m
LD1158	2 tonne x 2m
LD1159	2 tonne x 4m
LD1160	2 tonne x 6m

Code	EWL
LD1161	3 tonne x 2m
LD1162	3 tonne x 4m
LD1163	3 tonne x 6m

Code	EWL
LD1164	5 tonne x 2m
LD1165	5 tonne x 4m
LD1166	5 tonne x 6m

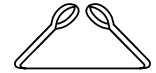
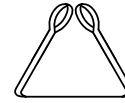
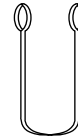
Code	EWL
LD1167	10 tonne x 6m

Code	EWL
LD1170	20 tonne x 6m



Web and Round Slings

Each of our Round Slings has a different weight capacity, so make sure you're ordering the correct product for the weight limit you require to avoid any potential risks.



Capacity (kg)	Colour	Vertical x 1	Choke x 0.8	Basket 00 x2	Basket 00 - 900 x 1.4	Basket 1200 x 1
1,000	Violet	1,000	800	2,000	1,400	1,000
2,000	Green	2,000	1,600	4,000	2,800	2,000
3,000	Yellow	3,000	2,400	6,000	4,200	3,000
4,000	Grey	4,000	3,200	8,000	5,600	4,000
5,000	Red	5,000	4,000	10,000	7,000	5,000
6,000	Brown	6,000	4,800	12,000	8,400	6,000
8,000	Blue	8,000	6,400	16,000	11,200	8,000
10,000	Orange	10,000	8,000	20,000	14,000	10,000
12,000	Orange	12,000	9,600	24,000	16,800	12,000
15,000	Orange	15,000	12,000	30,000	27,000	21,000
20,000	Orange	20,000	16,000	40,000	36,000	28,000



Forklift Jib

Fork mounted extending jibs specifically designed to convert a forklift truck into a long-reach mobile crane.

- Extending jib for maximum height reach
- Flexibility for reaching and transporting awkward loads

Code	Description	Min reach (mm)	Max reach (mm)
LD1143	Forklift Jib 1 tonne	1,000	3,000
LD1145	Forklift Jib 2.5 tonne	1,000	3,000
LD1146	Forklift Jib 3 tonne	1,000	3,000

LD1143



Piling Shackles

A wide range of Piling Shackles sizes are available.

- One week minimum hire

Code	Description	SWL
LD0262	Piling Shackle	2 tonne
LD0253	Piling Shackle (QR)	2 tonne

LD0253



Forklift Extension Forks

Forklift Extension Forks provide an effective solution for the occasional need to stabilise long and awkward loads.

Forklift hook attachments are a quick and easy method of converting a forklift truck into a mobile crane. Supplied with heel pins to secure behind the forks to prevent slipping.

Code	Description
LD1140	Forklift Extension Forks
LD1141	Forklift Hook Attachment 2 tonne
LD1142	Forklift Hook Attachment 3 tonne
LD1149	Forklift Hook Attachment 5 tonne

LD1140





LIFTING HIRE & SALES

LIFTING DEPOTS

03330 094 153

lifting@gap-group.co.uk

