

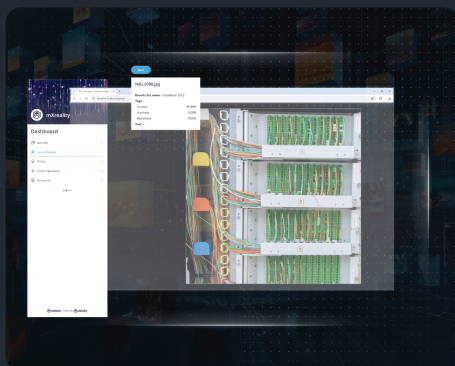


**mxReality (part of Enzen) are experts in immersive technology that transforms business processes and training delivery.**

Our talented team has over 30 years of experience designing and developing award-winning solutions. Talk to us when you need a technology partner you can trust.

**#ArtificialIntelligence #MixedReality #Metaverse**

Visit our website



### **mXinspect | AI image recognition**

[Learn more >](#)

mXinspect is the next generation of image recognition, using AI to transform the manual procedure of image categorisation into an efficient, automated process. Take the guesswork out of identification, increase efficiency and improve safety with mXinspect.

For the Power and Utilities sector mXinspect can be used to see if:

- An installation has been completed to the correct safety standard
- A repair has been completed correctly
- An asset has been maintained

### **mXvision | 3D digital twin**

[Learn more >](#)

A remotely accessible 3D digital twin of your asset or location. mXvision gathers your information and visualises it in the metaverse; providing a unified contextual view of information including Geographic Information System (GIS), Building Information Modelling (BIM), SCADA, PLC IOT and telemetry.

With mXvision you can:

- Visualise all your data in one place
- Encourage collaborative working
- Increase your safety and security





## mXlearn | Immersive learning environment

[Learn more >](#)

Create a tailor-made, immersive learning experience using virtual reality (VR), virtual environments (VE) and augmented reality (AR). Learners can increase their knowledge and practise their skills in a simulated environment without any real-world consequences.

mXlearn delivers engaging and interactive learning that:

- Increases knowledge retention
- Improves learner confidence
- Reduces costs and risk

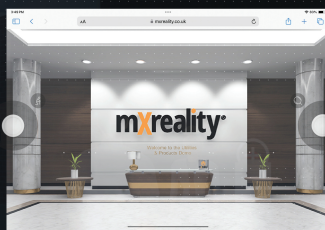
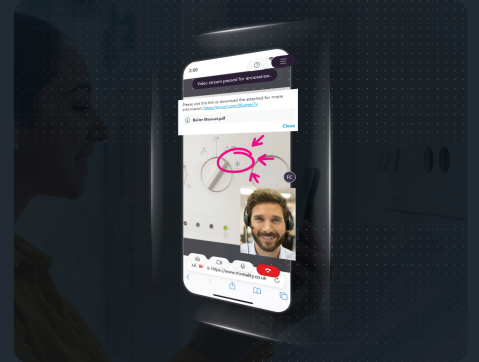
## mXremote | Visual remote support

[Learn more >](#)

mXremote provides user-friendly, 'real-time' remote assistance via your colleague's or customer's smartphone or tablet. Through the camera, you can see what they see. Annotations can be done on the spot; information can be shared immediately, and sessions can be recorded.

With mXremote you can:

- Support inexperienced colleagues or new hires
- Improve your customer experience and satisfaction
- Reduce call-outs and waiting times for common issues



## mXshowroom | Immersive customer experience

[Learn more >](#)

Showcase your products and services in this immersive 3D metaverse. Allow customers to explore new and existing products and discover more about your brand. Build a community where users can talk to you and each other, creating more opportunities for customer interaction.

With mXshowroom you can:

- Drive brand awareness and revenue
- Create more customer touchpoints
- Demonstrate products and share information

## mXassist | Virtual technical assistant

[Learn more >](#)

mXassist is a virtual reality assistant that combines cutting-edge Augmented Reality (AR) and Artificial Intelligence (AI) to support your frontline workforce. Easily identify products, diagnose faults, and rapidly resolve issues to improve operational efficiency with mXassist.

With mXassist you can:

- Improve first-time fix rates
- Reduce operational costs
- Train new recruits



Can't see what you are looking?

## Bespoke systems development

Our collective experience and unique perspective on technology make the mXreality team best placed to help you find the right technological solution for your business.

We don't apply technology for the sake of it; we work to develop solutions that will have a positive impact on you and your customers.

Talk to our team about creating a bespoke solution to your challenge.