



Precise, flexible and versatile

## FLUXUS® F/G60X Series

Portable ultrasonic flow measurement of liquids,  
thermal energy, gases, compressed air and steam



Oil & Gas

Chemical & Petrochemical

Water & Wastewater

Power Generation

HVAC

Pharmaceutical

Food & Beverage

Semiconductor

Mining

General Production

**FLEXIM**

*when measuring matters*

# Flow Measurement on the go

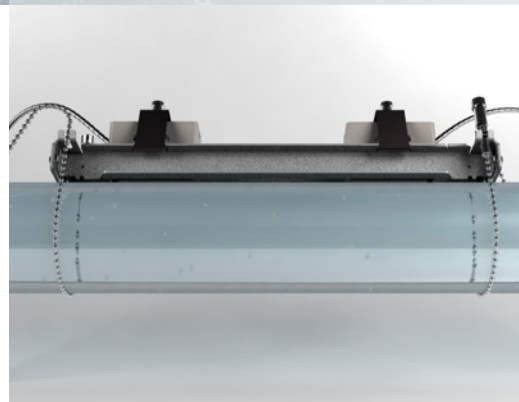
## FLUXUS® F/G60X Series



### Welcome to the most versatile and industry-proven portable flow meter

The FLUXUS® F/G60X portable flow meter series is the instrumentation standard in many industries, ranging from the Oil & Gas and Chemical Industry to HVAC, Water & Wastewater, Food & Beverage, Pharma and many more. Independent of the environment and pipe conditions, it accurately and reliably measures:

- virtually any liquid – independent of viscosity and temperature (from as low as -190 °C up to +600 °C) and even with solid or gaseous entrainments
- virtually any gas – independent of the pressurisation, including compressed air and steam, and not affected by gas wetness (up to LVF of 5%) as well as
- thermal energy flow rates of liquid heat transferring media (water, heat transfer oils, etc.)

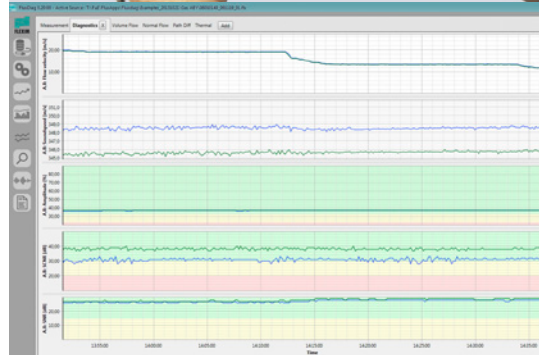
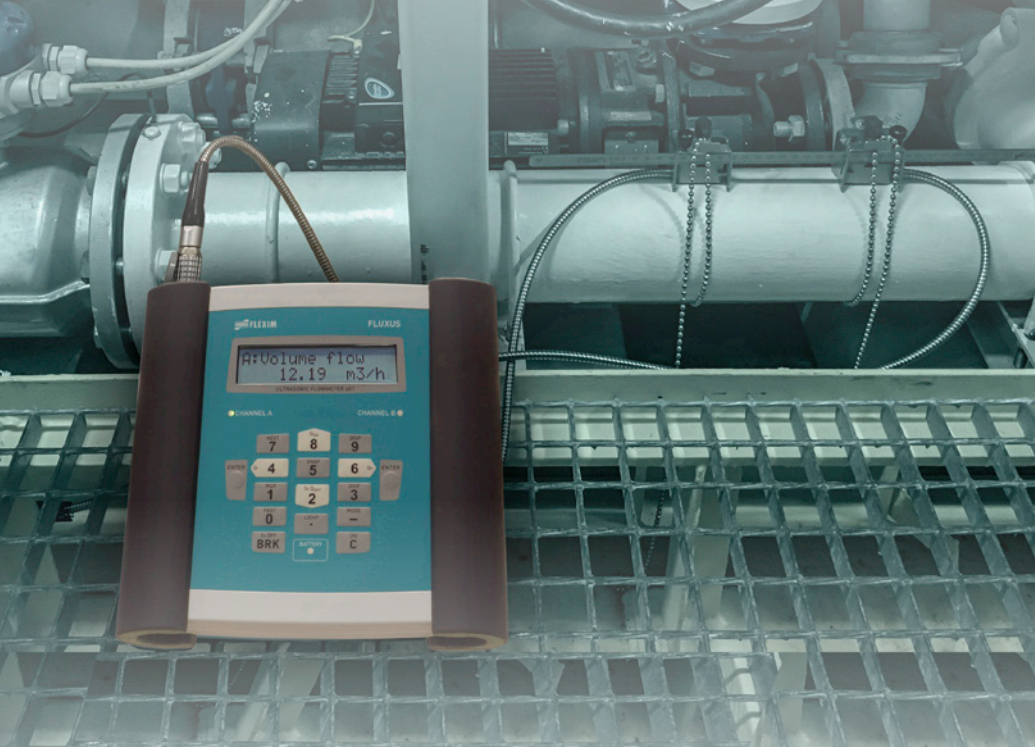


### Fit for industrial purpose

With the transmitter residing in a sturdy housing and the transducers and cables being stainless steel armored, FLUXUS® F/G60X offers unrivalled durability for long-term stable flow measurements. Its internal battery allows for up to 25 hrs. of autonomous measurement.

Moreover, based on special ATEX, IECEx Zone 2 and FM Class I, Div. 2 certified variants, time consuming hot work permits are a thing of the past.





## Safe and efficient by principle

As the ultrasonic clamp-on transducers are simply mounted onto the pipe wall outside, the measurement does not require any pipe modifications and does not impair plant availability. With no direct media contact any potential for leaks can be ruled out, offering highest operational safety.

## Measurement data you can rely on

With 30 years of engineering experience, FLEXIM sets standards in the field of clamp-on flow measurement:

- Benchmarking digital signal processing and evaluation capabilities (up to 1000 measurement signals per second)
- Separately calibrated transmitters and transducer pairs based on patented aperture calibration for highest possible accuracy of the measuring system
- Matched and paired transducers ensuring zero offset and superior low flow performance
- Integrated transducer temperature compensation (acc. to ANSI/ASME MFC-5.1-2011 regulations), for stable measurements independent of changing ambient temperatures
- Two channels for reliable measurements at challenging applications or simultaneous measurement at two pipes
- Built-in Noise Trek® mode for accurate and reliable measurements of liquids with entrained solids or gases as well as internal wet gas compensation (up to LVF of 5%)

## Data evaluation made easy

In connection with FLEXIM's elaborated FluxDiag Software, efficient measurement data evaluation, interpretation and recommendation is as easy as it can get. By downloading measurement data from the meter, FluxDiag offers statistical data analysis and extensive graphical visualisation helping to gain an in-depth understanding of the process.

With its excellent reporting options, it is the ideal tool to comply with industry standards for regular verification of existing meters and plant wide flow audits.



## Solutions for any flow metering application

The FLUXUS® F/G60X portable flow meters are available in various variants, starting as a liquid flow meter up to a multifunctional meter for non-invasive measurement of liquids, heat flow rates and gases – even including compressed air and steam.

Whereas the FLUXUS® F/G601 meter series is designed for non-hazardous area related applications, the FLUXUS® F/G608 meter series is ATEX, IECEx zone 2 (1) and FM Class I, Div. 2 (1) certified, making them the world's only portable flow meters with hazardous area approval.

The FLUXUS® F/G60X portable flow meters are the ideal tool for:

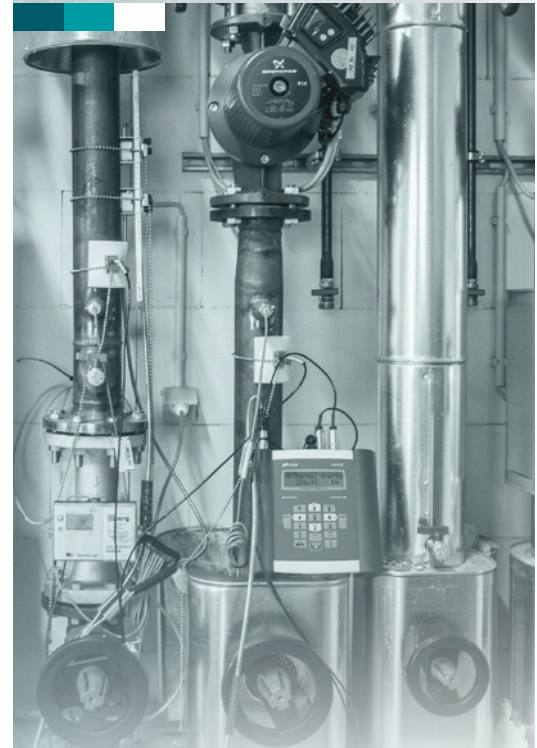
- Spot metering for continuous process optimisation
- Check metering of existing stationary meters
- Temporary replacement of existing meters
- Plant wide flow and thermal energy audits
- Consumption monitoring
- Efficiency determination of pumps, heat exchangers, etc.

## For liquids: FLUXUS® F60X

The standard FLUXUS® F60X portable liquid flow meter allows for the measurement of virtually any liquid media – from water over high viscosity oils to chemicals such as acids and caustics and up to slurries. In conjunction with the WaveInjector® transducer mounting, the meter can even measure at extreme pipe wall temperatures from as low -190 °C up to +600 °C.

## For liquids and thermal energy flows: FLUXUS® F60X Energy

The FLUXUS® F60X Energy is the portable meter of choice for monitoring of thermal energy flow rates e.g. balancing of chillers / heaters, optimisation of heat exchangers, etc., making it a standard flow metering tool for HVAC applications as well as energy efficiency tasks in any kind of industrial environment. In terms of media and applicable pipe wall temperature it offers the same possibilities as the standard FLUXUS® F60X portable meter.





FLEXIM's range of FLUXUS® G60X portable gas flow meters not only covers virtually any gaseous medium, they also include all liquid flow metering capabilities of the FLUXUS® F60X series meter series making them a truly comprehensive tool.

### **For liquids and gases: FLUXUS® G60X**

When measuring gas filled pipes, the FLUXUS® G60X portable flow meter is the system of choice. Independent of the pipe's pressurisation and with virtually no limitation in terms of measurable media – even wet gas isn't a challenge – it is the perfect measuring solution for the oil & gas and chemical industry.

### **For liquids, thermal energy, gases and compressed air: FLUXUS® G60X CA Energy**

Equipped with temperature and current inputs, the product variant FLUXUS® G60X CA Energy is the most versatile multi-tool for various measuring tasks: From monitoring liquid and thermal energy streams up to gas flow rates – including compressed air – it is the ideal portable measuring system for usage within the framework of plant wide industrial energy audits.

### **One for all – including steam: FLUXUS® G601 ST**

As the world's only portable steam flow meter, the FLUXUS® G601 ST is the benchmark of non-invasive clamp-on ultrasonic flow measurement. Engineered for low pressure and low steam temperature applications, it is an ideal companion in various industries ranging from food & beverage to the pharmaceutical and chemical sector. Additionally, it also measures thermal energy and flow rates of virtually any liquid or gaseous medium.





## Technical Data

### Portable liquid flow meters

	FLUXUS® F60X	FLUXUS® F60X Energy
Measurement of:	Volumetric flow rate, mass flow rate, flow velocity	Volumetric flow rate, mass flow rate, flow velocity, heat flow rate
Measurement uncertainty:	±1% of reading ±0.005 m/s	
Reproducibility:	0.15% of reading ±0.005 m/s	
Flow velocities:	0.01 to 25 m/s	
Outputs:	2 x 4-20 mA (active/passive), 2 x binary	
Inputs:	-	4 x Temp. Pt100 / Pt1000 RTD
Communication:	Modbus RTU	
Pipe size range (I.D.):	6 mm to 6500 mm	
Temperature range:	-40 °C to +240 °C (with Wavelnjector® mounting: -190 °C to +600 °C)	
Hazardous area protection:	F608 product variant: ATEX, IECEx Zone 2 and FM Class I, Div. 2 certified; Connected transducers up to ATEX, IECEx Zone 1 and FM Class I, Div. 1	

### Portable gas and liquid flow meters

	FLUXUS® G60X	FLUXUS® G60X CA (Compressed Air) Energy	FLUXUS® G601 ST - Steam flow meter
Measurement of:	Volumetric flow rate, mass flow rate, flow velocity	Volumetric flow rate, mass flow rate, flow velocity, heat flow rate	Volumetric flow rate, mass flow rate, flow velocity, heat flow rate
Measurement uncertainty:	±1 to 3% of reading ±0.005 m/s		
Gases & Steam:	±1% of reading ±0.005 m/s		
Liquids:	±1% of reading ±0.005 m/s		
Reproducibility:	0.15% of reading ±0.005 m/s		
Flow velocities:	0.01 to 35 m/s (dependent on pipe diameter); Steam: 0.01 to 60 m/s		
Outputs:	2 x 4-20 mA (active/passive), 2 x binary		
Inputs:	-	2 x Temp. Pt100 / Pt1000 RTD, 2 x 4-20 mA passive (G601 CA Energy only)	2 x Temp. Pt100 / Pt1000 RTD, 2 x 4-20 mA passive
Communication:	Modbus RTU		
Pipe size range (I.D.):			
Gases:	7 mm to 1600 mm		
Liquids:	6 mm to 6500 mm		
Steam:	45 mm to 400 mm		
Temperature range:			
Gases and Steam:	-40 °C to +240 °C; Steam: +135 °C to +180 °C		
Liquids:	-40 °C to +240 °C (with Wavelnjector® mounting: -190 °C to +600 °C)		
Hazardous area protection:	G608 product variants: ATEX, IECEx Zone 2 and FM Class I, Div. 2 certified; Connected transducers up to ATEX, IECEx Zone 1 and FM Class I, Div. 1		

**FLEXIM GmbH, Germany**  
Phone: +49 30 93 66 76 60  
info@flexim.de

**FLEXIM Austria GmbH**  
Phone: +43 33 26 529 81  
office@flexim.at

**FLEXIM Instruments Benelux B.V.**  
Phone: +31 10 24 92 333  
benelux@flexim.com

**FLEXIM France SAS**  
Phone: +33 4 27 46 52 10  
info@flexim.fr

**FLEXIM Instruments UK Ltd.**  
Phone: +44 1606 781 420  
sales@flexim.co.uk

**FLEXIM Middle East**  
Phone: +971 4430 5114  
salesme@flexim.com

**FLEXIM India**  
Phone: +91 98114 49285  
salesindia@flexim.com

**FLEXIM Instruments Asia Pte Ltd.**  
Phone: +65 67 94 53 25  
salessg@flexim.com

**FLEXIM Instruments China**  
Phone: +86 21 64 95 75 20  
shanghai@flexim.com

**FLEXIM S.A., Chile**  
Phone: +56 22 32 03 62 80  
info@flexim.cl

**FLEXIM Service and Support Center South America, Argentina**  
Phone: +54 11 49 20 71 00  
flexim@escoarg.com.ar  
www.escoarg.com.ar

**FLEXIM AMERICAS Corporation, USA**  
Phone: +1 63 14 92 23 00  
salesus@flexim.com



[www.flexim.com](http://www.flexim.com)