



# davimast

PPE anchor point or modular load lifting system.

# davimast

PPE anchor point or modular load lifting system.

The davimast is a PPE anchor point or modular load lifting system that can be used:

- As a PPE anchor point when equipped with the 360° rotating anchor points to secure 2 users of 150 kg.
- As a temporary anchor point for tempo 3 lifeline when equipped with the 360° rotating anchor points.
- As a PPE anchor point when equipped with a blocfor™ 20R or 30R ESD and a bracket to secure an operator on the surface and an operator in a manhole.
- As a load lifting anchor point when equipped with a caRoI™ TS 250 and bracket.

## QUALITY:

- Compact.
- Easy to use.

## FLEXIBILITY:

- Well suited for use as a transportable anchor point.
- Anchorage for 2 users.
- Can be used for lifting materials.
- Different type of bases.
- Modular: different combinations possible with lifting and fall arrest device Tractel® products.
- Different brackets for multiple uses.

## TECHNICAL CHARACTERISTICS:

- 2 users: 150 kg each.
- Compatible for use in confined space applications.
- Maximum load capacity (materials): WLL 250 kg.
- Compatible with horizontal lifelines with an impact force inferior to 750 daN.

## SECURITY:

- Provides an elevated anchorage point.
- Equipped with 150 kg PPE anchor points: secures 2 people simultaneously.

## ERGONOMICS:

- Easy handling / Very lightweight.
- Easy storage.
- Easy to transport.
- Easy to install: no tools required for assembly.

## COMPATIBLE APPLICATIONS

- Rescue
- Confined spaces
- Rope works
- Manholes
- Pits

## Standards

davimast complies with:

- **EN 795-A: 2012** (fixed anchor points)
- **CEN/TS 16415: 2013-B** (Fall arrest for 2 users of 150 kg each)
- **Machine Directive 2006/42/CE** (Material lifting)

Can be used with system conform to:

- **EN 360, EN 353-2 or EN 355** (Individual protection of operators against falls)
- **EN 1496** (rescue) **with blocfor™ R and davimast bracket**
- **EN 795** (horizontal lifeline with an impact force inferior to 750 daN)
- **Machine Directive 2006/42/CE** (Material lifting) **when used with caRoI™ TS 250 and bracket**

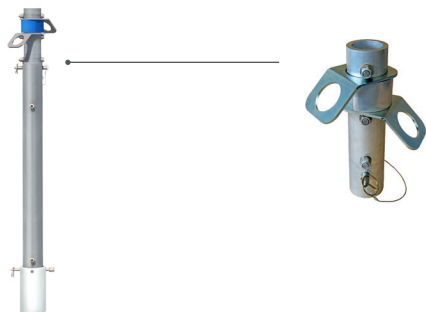
Tractel® supports you in your project and offers you a wide range of individual and collective protection solution that secures the operations.

Contact us for more information: [www.tractel.com](http://www.tractel.com)

# davimast

Different brackets for multiple uses

## davimast with 360° rotating anchor points



Provides 2 independent 360° rotating anchor points for fall arrest anchorage.  
For 2 users: 150 kg each.

## davimast with caRol™ TS and bracket

### Lifting material



Manual winch for material lifting - maximum load of 250 kg.

caRol™ TS 250 winch 250 kg meets the requirements of hoisting winches with a maximum load of 250 kg (Directive 2006/42 / EEC).

- Available cable lengths of 20 m and 30 m.
- The winch cable is guided by equipped pulleys with an anti-jump pin fixed on the arrow of davitrac.

**A** One anchor point: allows to secure an operator up to 150 kg, equipped with his tools.

## davimast with blocfor™ and bracket

### Safety & rescue



Automatic fall arrester (EN360) with rope (galvanised or stainless steel), with rescue winch (EN1496).

Can be easily integrated on the davimast, without tools.

Allows to secure an operator up to 150 kg, equipped with his tools.

- Automatic fall protection device with integrated winch for ascending or descending during a possible rescue operation.
- Shock-absorption system: ensures that the user will not be subjected to an impact of more than 600 daN even if the fall occurs when the cable is fully unwound.
- The blocfor cable is guided by equipped pulleys with an anti-jump pin fixed on the head of davimast.

**A** One anchor point: allows to secure an operator up to 150 kg, equipped with his tools.

## davimast with 2 anchor points 360° for horizontal lifeline



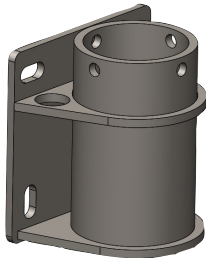
Provides anchor points for installation of a tempo 3 temporary lifeline.

For 3 users: 150 kg each.

# davimast

Different brackets for multiple uses

## Wall mounted adapter



Wall mounted adapter fixed to concrete or steel vertical structures. Adapter with anchoring points to secure two persons (150 kg each) at the same time.

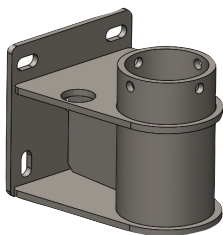
## Flush floor adapter



Flush adapter moulded into the concrete. Ideal to have no obstacles on the ground surface to prevent falls.

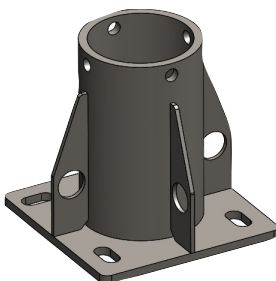
\*Delivered with a special protection stopper, to use when davitrac is not used/integrated on the adapter.

## Clearance mural adapter



Clearance mural adapter (with 291 mm offset) fixed to concrete or steel vertical structures. Adapter with anchoring points to secure two persons (150 kg each) at the same time.

## Mounted floor adapter

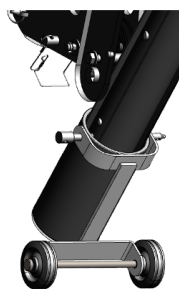


Mounted floor adapter fixed to concrete or steel horizontal structure. Adapter with anchoring points to secure two persons (150 kg each) at the same time.

# davimast

PPE anchor point or modular load lifting system.

## Accessories



Transport trolley for davimast



Transport bag

Model name	Product code
davimast - mast	210188
bracket with 2 anchor points	210198
blocfor™ 20R galva ESD with bucket for davimast - 150 kg range	84362
blocfor™ 20R inox with bracket for davimast - 100 kg range	84372
blocfor™ 30R galva ESD with bucket for davimast - 150 kg range	84382
blocfor™ 30R ESD with bracket for davimast - 100 kg range	84392
caRoI™ TS 250 kg with 20 m of galvanized cable galva and bracket for davimast	293799
caRoI™ TS 250 kg with 30 m of galvanized cable galva and bracket for davimast	293809
tempo 3 lifeline	207068
Wall mounted adapter	210118
Clearance mural adapter	210128
Mounted floor adapter	210108
Flush floor adapter	210138
Transport trolley	210618
Transport bag	68752

## Confined Access - Solutions



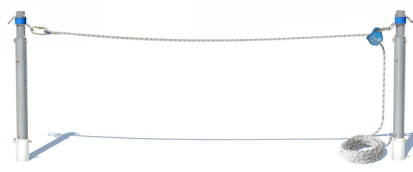
**Scan this QR Code & discover all our confined access solutions.**

Tractel®'s experience puts it at the forefront of providing safe, reliable and easy-to-use equipment for installation and maintenance. A complete product range, combined with extensive expertise and experience in compliance to standards, as well as an online solution configurator make Tractel® the perfect partner.

<https://www.tractel.com/global/catalogue/confined-space>



davitrac



davimast



tracode



tracrod

TRIED, TESTED, TRACTEL®

www.tractel.com

# GLOBAL REACH



## NORTH AMERICA

### CANADA

**Tractel Ltd.**  
1615 Warden Avenue  
Toronto, Ontario M1R 2T3, Canada  
Phone: +1 800 465 4738  
Fax: +1 416 298 0168  
Email: marketing.swingstage@tractel.com

11020 Mirabeau Street  
Montréal, QC H1J 2S3, Canada  
Phone: +1 800 561 3229  
Fax: +1 514 493 3342  
Email: tractel.canada@tractel.com

### MÉXICO

**Tractel México S.A. de C.V.**  
Galileo #20, O cina 504.  
Colonia Polanco  
México, D.F. CP. 11560  
Phone: +52 55 6721 8719  
Fax: +52 55 6721 8718  
Email: tractel.mexico@tractel.com

### USA

**Tractel Inc.**  
51 Morgan Drive  
Norwood, MA 02062, USA  
Phone: +1 800 421 0246  
Fax: +1 781 826 3642  
Email: tractel.usa-east@tractel.com

168 Mason Way  
Unit B2  
City of Industry, CA 91746, USA  
Phone: +1 800 675 6727  
Fax: +1 626 937 6730  
Email: tractel.usa-west@tractel.com

### BlueWater L.L.C

4064 Peavey Road  
Chaska, MN 55318, USA  
Phone: +1 866 579 3965  
Email: info@bluewater-mfg.com

### Fabenco, Inc

2002 Karbach St.  
Houston, Texas 77092, USA  
Phone: +1 713 686 6620  
Fax: +1 713 688 8031  
Email: info@safetygate.com

## EUROPE

### GERMANY

**Tractel Greifzug GmbH**  
Scheidtbachstrasse 19-21  
51469 Bergisch Gladbach, Germany  
Phone: +49 22 02 10 04-0  
Fax: +49 22 02 10 04 70  
Email: info.greifzug@tractel.com

### LUXEMBOURG

**Tractel Secalt S.A.**  
Rue de l'Industrie 12  
B.P 1113 - 3895 Foetz, Luxembourg  
Phone: +352 43 42 42-1  
Fax: +352 43 42 42-200  
Email: secalt@tractel.com

### SPAIN

**Tractel Ibérica S.A.**  
Carretera del Medio, 265  
08907 L'Hospitalet del Llobregat  
Barcelona, Spain  
Phone: +34 93 335 11 00  
Fax: +34 93 336 39 16  
Email: infotib@tractel.com

### FRANCE

**Tractel S.A.S.**  
RD 619 Saint-Hilaire-sous-Romilly  
BP 38 Romilly-sur-Seine  
10102, France  
Phone: +33 3 25 21 07 00  
Email: info.tsas@tractel.com

### Ile de France Maintenance Service S.A.S.

Zac du Gué de Launay  
77360 Vaires sur Marne, France  
Phone: +33 1 56 29 22 22  
E-mail: ifms.tractel@tractel.com

### Tractel Location Service

Zac du Gué de Launay  
77360 Vaires sur Marne, France  
Phone: +33 1 60 36 30 00  
E-mail: info.tls@tractel.com

### Tractel Solutions S.A.S.

77-79, rue Jules Guesde  
69230 St Genis-Laval, France  
Phone: +33 4 78 50 18 18  
Fax: +33 4 72 66 25 41  
Email: info.tractelsolutions@tractel.com

### GREAT BRITAIN

**Tractel UK Limited**  
Old Lane Halfway  
Sheffield S20 3GA, United Kingdom  
Phone: +44 114 248 22 66  
Email: sales.uk@tractel.com

### ITALY

**Tractel Italiana SpA**  
Viale Europa 50  
Cologno Monzese (Milano) 20093, Italy  
Phone: +39 02 254 47 86  
Fax: +39 02 254 71 39  
Email: infoit@tractel.com

### NETHERLANDS

**Tractel Benelux BV**  
Paardeweide 38  
Breda 4824 EH, Netherlands  
Phone: +31 76 54 35 135  
Fax: +31 76 54 35 136  
Email: sales.benelux@tractel.com

### PORTUGAL

**Lusotractel Lda**  
Bairro Alto Do Outeiro Armazém 1  
Trajouce, 2785-653 S. Domingos  
de Rana, Portugal  
Phone: +351 214 459 800  
Fax: +351 214 459809  
Email: comercial.lusotractel@tractel.com

### POLAND

**Tractel Polska Sp. z o.o.**  
ul. Byslawska 82  
Warszawa 04-993, Poland  
Phone: +48 22 616 42 44  
Fax: +48 22 616 42 47  
Email: tractel.polska@tractel.com

### NORDICS

**Tractel Nordics (Scanclimber OY)**  
Turkkirata 26  
FI - 33960  
Pirkalla, Finland  
Phone: +358 10 680 7000  
Fax: +358 10 680 7033  
E-mail: tractel@scanclimber.com

### RUSSIA

**Tractel Russia O.O.O.**  
Olympiysky Prospect 38, Office 411  
Mytishchi, Moscow Region  
141006, Russia  
Phone: +7 495 989 5135  
Email: info.russia@tractel.com

## ASIA

### CHINA

**Shanghai Tractel Mechanical Equip. Tech. Co. Ltd.**  
2nd oor, Block 1, 3500 Xiupu road,  
Kangqiao, Pudong,  
Shanghai, People's Republic of China  
Phone: +86 21 6322 5570  
Fax: +86 21 5353 0982

### SINGAPORE

**Tractel Singapore Pte Ltd**  
50 Woodlands Industrial Park E7  
Singapore 757824  
Phone: +65 6757 3113  
Fax: +65 6757 3003  
Email: enquiry@tractelsingapore.com

### UAE

**Tractel Secalt SA Dubai Branch**  
Office 1404, Prime Tower Business Bay  
PB 25768 Dubai, United Arab Emirates  
Phone: +971 4 343 0703  
Email: tractel.me@tractel.com

### INDIA

**Secalt India Pvt Ltd.**  
412/A, 4th Floor, C-Wing, Kailash  
Business Park, Veer Savarkar Road,  
Parksite, Vikhroli West,  
Mumbai 400079, India  
Phone: +91 22 25175470/71/72  
Email: info@secalt-india.com

### TURKEY

**Knot Yapı ve İş Güvenliği San.Tic. A.Ş.**  
Cevizli Mh. Tugay Yolu CD.  
Nuvo Dragos Sitesi  
A/120 Kat.11 Maltepe  
34846 Istanbul, Turkey  
Phone: +90 216 377 13 13  
Fax: +90 216 377 54 44  
Email: info@knot.com.tr

## ANY OTHER COUNTRIES:

### Tractel S.A.S.

RD 619 Saint-Hilaire-sous-Romilly  
BP 38 Romilly-sur-Seine  
10102, France  
Phone: +33 3 25 21 07 00  
Email: info.tsas@tractel.com



www.tractel.com

