



## SMART MOBILE WORKFORCE

Industry's #1 Digital Workforce Experience (WX) Platform

**Mobilize.**  
**Digitize.**  
**Optimize.**



Delivering End-to-End Mobile Workforce Experience to Electric, Water and Gas Utilities, Municipalities, Universities, State & Local Agencies, Counties, Smart Cities, Public Sector Units and Non-Profit Organizations

# The Undisputed Leader in Digital Workforce Experience

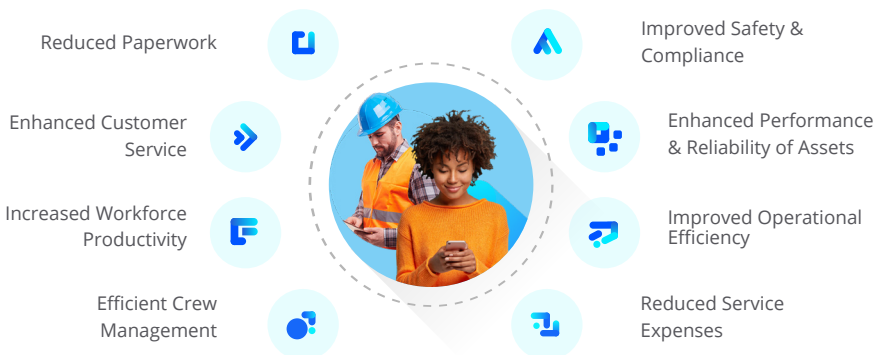
---

At the heart of digital transformation, global providers are evolving into digitally enabled, customer and workforce-centric organizations. For progressive companies striving to maintain, enhance, and streamline operations while improving the customer and workforce experience- Here comes the industry's trusted and best solution- **Smart Mobile Workforce (SMW®)**.

Smart Mobile Workforce (SMW®) is the #1 Digital Workforce Experience (WX) Platform for Providers, worldwide. SMW® helps in intelligently managing the field operations to make the service experiences effortless for the end customers. SMW® provides:

- A **single integrated mobile platform** to increase productivity, efficiency, safety, accuracy, and compliance by enabling real-time two-way communication between utility and its field workers.
- **End-to-end workforce management** with user-friendly interface and real-time updates.
- Continuous **training and learning** opportunities for field workers.
- Enterprise-wide **collaboration** resulting in optimized field operations.

SMW® mobilizes and empowers field workforce to improve customer service levels through faster response to service requests at a lower operating cost. The platform is playing a key role in automating business processes by eliminating inefficiencies, ensuring digital engagement, breaking down operational silos, decreasing manual, repetitive work, and releasing time for more critical, value-creating tasks – which improves productivity and efficiency.



## The SMW<sup>®</sup> Advantage



Work Order Management



AI/ML Scheduling and Dispatching



Assets and Inventory Management



Training and Learning Mgmt.



Timesheet & Expense Mgmt.



Enterprise-wide Collaboration



Meter Management



Online & Offline Mode



AR/ VR Use Cases



Document Mgmt. & Smart Forms



Service Request & Case Mgmt.



Safety and Compliance



Damage Assessment



Storm and Outage Mgmt.



Vegetation Mgmt.



Fleet Mgmt. and AVL Tracking



Tech-En-Route



Field service and Operational AI and Analytics



GPS Route Tracking and Optimization



Inspections and Preventive Maintenance

## Driving Industry-Leading ROI Across Field Operations



**100%**  
Increase in On Time Arrivals



**100%**  
Automatic Workflows



**90%**  
Increase in Customer Satisfaction and Experience



**70%**  
Increase in Field Worker Productivity



**100%**  
Reduction in Paperwork



## About Smart Energy Water

Smart Energy Water, with its innovative and industry-leading cloud platforms, delivers the best Digital Customer Experiences (CX) and Workforce Experiences (WX), powered by AI, ML, and IoT Analytics to the global energy, water, and gas providers. At SEW, the vision is to Engage, Empower, and Educate billions of people to save energy and water. We partner with businesses to deliver platforms that are easy-to-use, integrate seamlessly, and help build a strong technology foundation that allows them to become future-ready.

### Corporate Headquarters

15495 Sand Canyon Ave. Ste. 100, Irvine, CA 92618

+1 (949) 409-6833 | [info@sew.ai](mailto:info@sew.ai)