



Flux Fact Sheet

# Flexible Account Management

Flux facilitates even the most complex of business setups, including multi-site accounts. A sophisticated architectural structure allows different parties to have varying access and user permissions, making complex business or residential multi-site account management simple and secure.

## **ARCHITECTURE HIERARCHY**

Flux uses a hierarchy of roles in order to clearly manage complex account structures simply. This focus on parties removes the attachment of identity to an ICP/Connection, which allows for multiple Users to be associated with a single account. The roles within accounts are defined as:

### **User**

A User has a unique ID and it is the parent to one, or many accounts. A User can represent a business or an individual and is used to represent the legal authority for all of the accounts/consumers below it in the structure.

A User is also a party (explained below) and can be assigned a role. Roles are used to define levels of access to accounts.

### **Account**

An account has its own unique ID also and below it are one, or many consumers. An account also holds the statement level information such as the aggregated bill (Statement), the transactional history, the payment methods, billing frequency etc.

Accounts can be used to represent a physical location with one or many meters, but is also commonly used to group multiple sites into billing groups to keep financial records easier to manage.

### **Consumer**

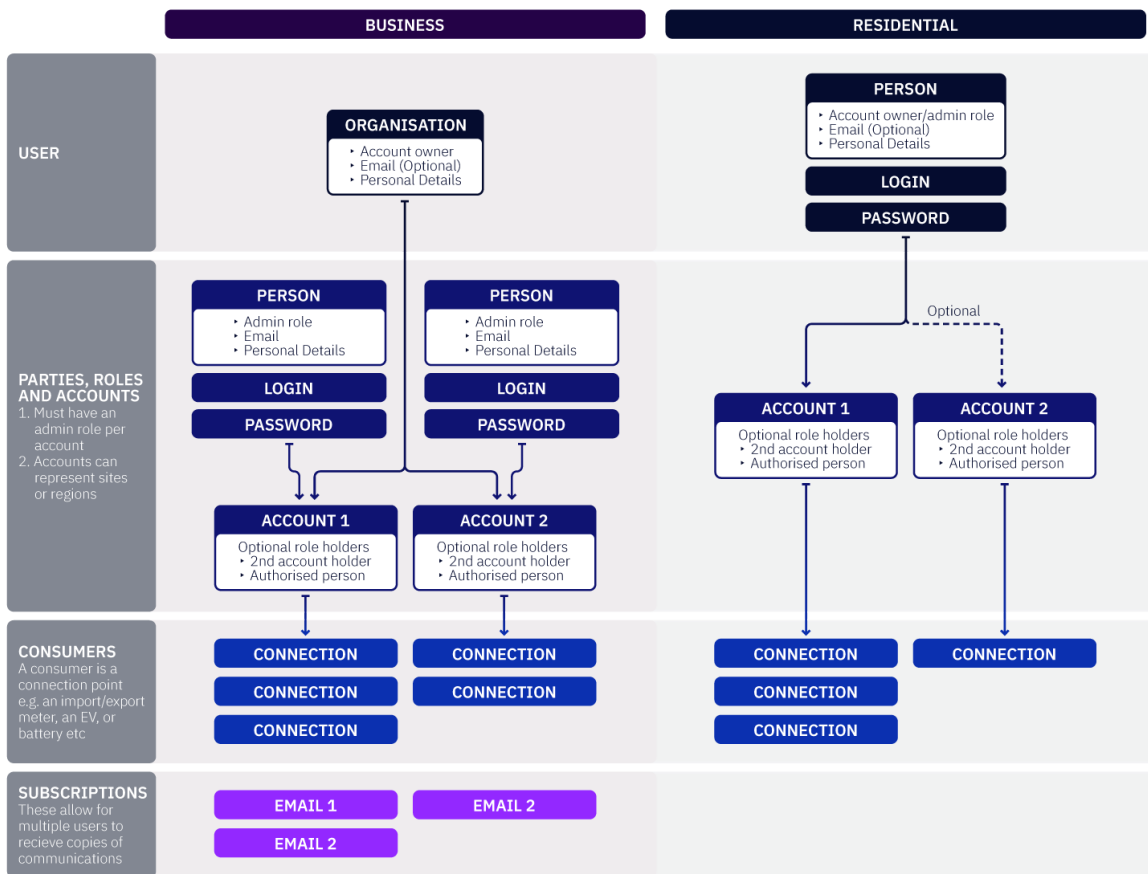
A consumer is any connection that consumes, stores or generates energy. For example an Import meter, an export meter, an electric vehicle etc.

### **Party**

A party is an individual or company who has a relationship with an account. The relationship is defined as the parties role.

### **Role**

Each Party then has a Role assigned. Typically this would be an Owner, where the accounts attached to the User they are legally responsible for, or an Administrator, whereby they have read/write access to the accounts they are connected to by the Owner.



## MULTI-SITE ACCOUNT MANAGEMENT

Multi-site customers can be set up in a variety of ways, dictated by the needs of the customer. For example:

1. A user with many accounts. Where each account represents a physical site with its consumers below it.
2. A user with one account and all of their consumers under one account regardless of their physical locations.
3. A user with an account per consumer.

Fundamentally however a customer wants to break down their invoices determines their set up.

## Consolidated invoicing

Flux provides account level invoicing where multiple properties or consumers grouped together on the same account can be invoiced simultaneously to produce a single consolidated document for example, dual-fuel.

## Monthly statement

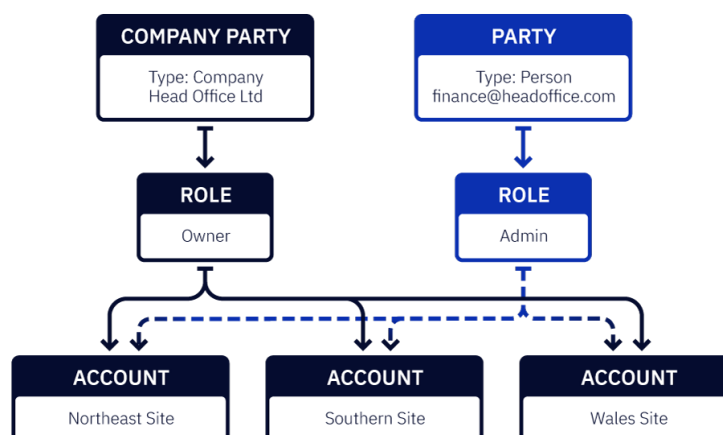
Flux also supports a monthly statement capability for customers with multiple consumers/properties who wish to have each property invoiced individually but receive and pay a single consolidated statement bill each month.

## PARTIES AND ROLES

To make the handling of complex business relationships easier, a flexible user and role management system allows detailed control over any user's communication preferences, including for specific sites within a multi-site account, and defines varying levels of access to account information. Some common examples of how this 'Parties and Roles' model are setup for multi-site accounts include:

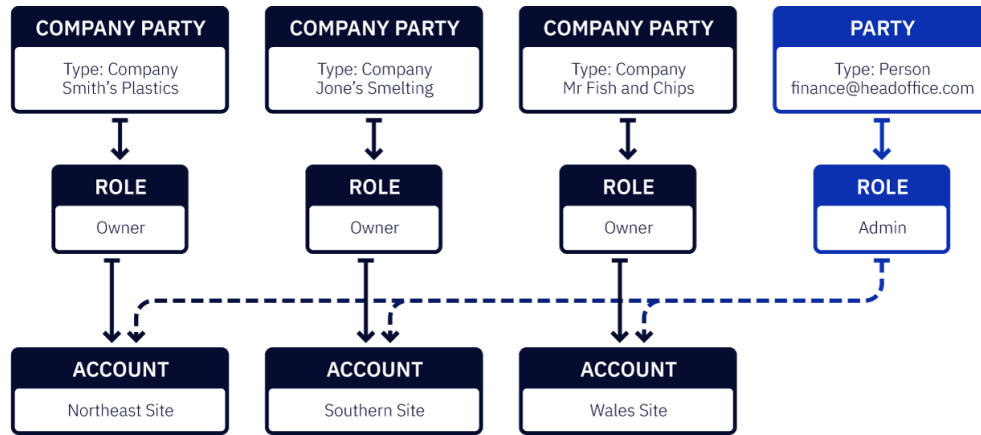
### 1. A group of related accounts

In the case that there is a single legal entity with multiple accounts and they are overseen by one person, an Organisation **company Party** with the role of 'owner' is created. A **person party** is also created, and this person is then given an 'administrator' role across all 3 accounts.



## 2. A group of unrelated companies

In the case that a person is acting on behalf of multiple unrelated legal entities, such as an energy consultant, a **person party** is created and given the role of administrator for all company party accounts they manage.



## SUBSCRIPTIONS

Our subscriptions feature allows for email addresses to be added to accounts in order for them to receive copies of correspondence without having the need to have a login.