



NEWCASTLE & NORTHUMBERLAND PHOTOGRAPHY SPRING WORKSHOP TRIP NOTES



WORKSHOP PREPARATION

- Please ensure that you read this paper thoroughly before the workshop. It contains information and advice which will help you get the most from the day
- Please note that timings shown on the schedules are for a summer workshop. We will include dawn starts on this workshop to capture the dawn light on the east coast.
- You shouldn't need to take notes: comprehensive course notes are provided in digital form at the end of the workshop. However, you may wish to make a note of key points

GENERAL INFORMATION

The workshop is planned to give the photographer a range of skills and experience in both the technical and creative aspects of photography and in particular photographing architecture and heritage. Locations are designed to offer experience in camera control, technique and composition, with photographic opportunities and challenges. Key points as follows:

- The locations are landscape photography focussed but if you have other interests the understanding and skills covered are transferrable to other subjects.
- The emphasis is on outdoor learning with limited time indoors. However in the event of bad weather, decisions will be made on any change in emphasis but we would still look to spend as much time outdoors as practicable.
- The locations are designed to offer a range of experience of use of camera control, technique and composition, with photographic opportunities and challenges.

- Locations involve short but steep uphill climbs to viewpoints and total distances of up to 2 hours round trip. You should be sufficiently fit to complete the walks to locations.
- Car parking is available but limited in many places – guidance is given below. If travelling by public transport I can drive between locations. (my car will take 4 passengers with equipment).

WORKSHOP TASKS

The 3 key themes that generally run through all or most tasks are:

- Developing your knowledge of your camera, its settings and controls
- Developing your understanding of exposure and natural light control
- Developing a creative eye for composition in landscape photography.

These 3 themes are supplemented by other aspects such as (examples):

- Understanding the RAW format and RAW processing
- Exploring your subject using a creative 'Point of View'
- Controlling focus and depth of field
- Use of specific techniques in landscape photography
- Use of filters and other accessories.

EQUIPMENT

Essential requirements:

- Camera (& lenses if separate from camera)
- Memory Card (s) with room for minimum 1000 images shot in RAW (suggest min 64GB)
- Camera manual
- Card reader & USB stick
- **Full battery + preferably a spare & battery charger (we don't want your battery running out!).**
- Laptop with installed software if you wish.

Optional (but please bring them if you have them)

- Tripod (required for dawn start and any situation requiring slower shutter speeds)
- Remote release (required for long exposures in particular)
- Filters: e.g. Polarising / Neutral Density / Graduated Neutral Density
- Any other gadgets you have!

I can assist with some of these if required. I would also be happy to offer advice on purchasing any equipment you may be looking for. My course notes, which are provided to you in digital form, also provide comprehensive information on equipment.

Other essential requirements:

- Suitable wet weather walking clothing and walking shoes / boots
- Food and drink for the day (although these can be purchased at locations)
- Headtorch / other torch
- Umbrella if rain is forecast
- Emergency contact details (see top of this paper - provided in advance please)

DAY 1 ITINERARY: NORTHUMBERLAND COAST FROM HOLY ISLAND TO BAMBURGH (INDICATIVE TIMETABLE)



NORTHUMBERLAND COAST WORKSHOP: DAY 1

Thursday 30th March

Holy Island (Lindisfarne) to Bamburgh Castle

Precise timings subject to confirmation and Itinerary indicative only

WORKSHOP START / MEETING POINT- 6.30 am at The Holy Island Causeway

We start at The Causeway with an 8am start to coincide with the early crossing time. We then move onto the harbour, Lindisfarne Castle and the Priory. The marshland landscape on the road to Holy Island offers a wealth of photographic opportunity.

Indoor session 9.00 - 10.00 am at Pilgrims Coffee House, Holy Island covering:

- Use of manual camera controls & setting up your camera for landscape photography
- Understanding Composition & equipment used in landscape photography

Morning Session – Holy Island Harbour, the Castle & Priory to Duddo Stones: 10.30am - 12.30pm

We continue our work around the harbour and the Causeway then move onto the Duddo Stones. The landscape offers opportunities but striking perspective lines, dramatic skies and great imagery both in colour and monochrome. We'll be exploring the area with a view to landscape composition, long exposure and a range of techniques.

PICNIC LUNCH BREAK WITH REVIEW SESSION AT DUDDO STONES 1.00 - 2.00pm

Afternoon Session – Duddo Stones to Bamburgh Castle from 2.30 - 4.30pm

We travel to Bamburgh via the town of Wooler (for a composition exercise), visiting Weetwood Bridge on the way and explore the coastline around the Castle, with its mix of dunes, rocky outcrops and rural viewpoints.

Review session (at Cafe in Bamburgh. 4.30 - 5.00 pm approx

Includes review of pictures & feedback and Close of Workshop

www.creativephotographytraining.co.uk

Parking & Other Key Points About Day 1 Workshop

Lindisfarne:

- There is limited parking space either side of the causeway at Lindisfarne. We meet on the west side (before the crossing) to assess crossing conditions before proceeding. The workshop is timed so that the water level is high (for photographic interest) but safe to cross. The area quickly becomes busy and we hope to avoid the worst of the crowds.
- The Lindisfarne car park costs £2.40 for 3 hours. This will be sufficient.
- The dawn start is dependent on crossing times. You will be informed of this before the workshop starts.

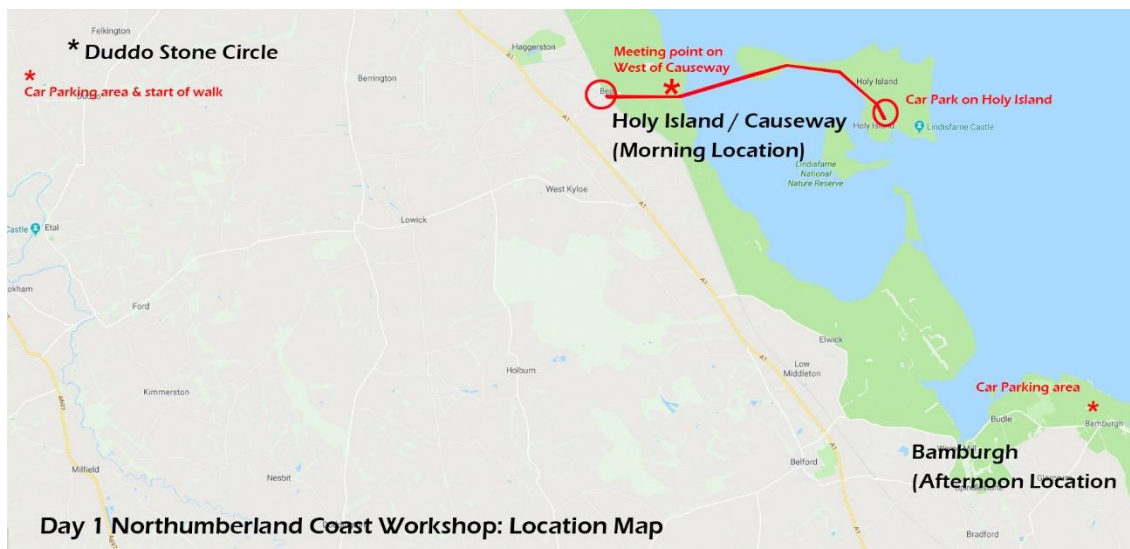
Duddo Stones:

- Parking for the Duddo Stones is limited (via a grass verge by the entrance gate). We should take as few cars as possible there (parking any others in Duddo village)
- It's a 1km / 15 min walk to the stones

Wooler or Belford / Bamburgh:

- There is free street parking available in Wooler and Belford (location TBC)
- There is free parking available above the shore line off the no-through road to Budle Point north from Bamburgh village. We will park there for this session.
- Café stop / review session at Bamburgh to be confirmed

Location of Day 1 Workshop



DAY 2 ITINERARY: NORTHUMBERLAND COAST FROM DUNSTANBURGH TO BOULMER (INDICATIVE TIMETABLE)



NORTHUMBERLAND COAST WORKSHOP: DAY 2 **Friday 31st March** **Dunstanburgh and the Coastline south of Craster**

The workshop will be based in the Northumberland Coast from Dunstanburgh to Boulmer with a visit to Craster and finish the workshop at Alnwick for views of the castle.

START OF WORKSHOP - 6.00 am at Dunstan Steads

We meet at the village of Embleton for the start at Dunstan Sands; walk to Dunstanburgh Castle and its surrounding coastline. There's plenty of foreground with wild flowers and rocky shorelines and hopefully changing light!

Indoor session 9.00 - 10.30 am at Cafe in Emberton (TBC) covering:

- Use of manual camera controls & setting up your camera for landscape photography
- Understanding Composition & equipment used in landscape photography

Morning Session – Craster and surrounding coastline 11.00 - 1.00pm

We stop at Craster for a composition exercise, exploring the harbour area and the nearby rocky coastline. We'll be exploring the area with a view to landscape composition, long exposure and a range of techniques.

PICNIC LUNCH BREAK WITH REVIEW SESSION AT CRASTER 1.00 - 1.30pm

Afternoon Session – Coastline from Cullernose Point and Rumbling Kern: 2.00 - 3.30pm

We drive the short distance to a parking area at Howick and explore the coastline from there. In particular there's a variety of composition opportunities and panoramic landscapes with dunes, rocky outcrops and rural viewpoints.

Views of Alnwick Castle and Review session (at Cafe in Alnwick 4.00 - 5.00 pm approx

We drive to Alnwick to capture classic views of the castle and finish at a cafe in Alnwick which includes review of pictures & feedback and Close of Workshop

www.creativephotographytraining.co.uk

PARKING & OTHER KEY POINTS ABOUT DAY 2 WORKSHOP

Dunstanburgh:

- There is parking at Dunstan Sands (space for around 30 cars so we should be OK unless it's very busy. If there are a lot of cars already there we may have to leave some at Embleton. There's a circular walk to the castle (inland and returning via the coast line).

Craster:

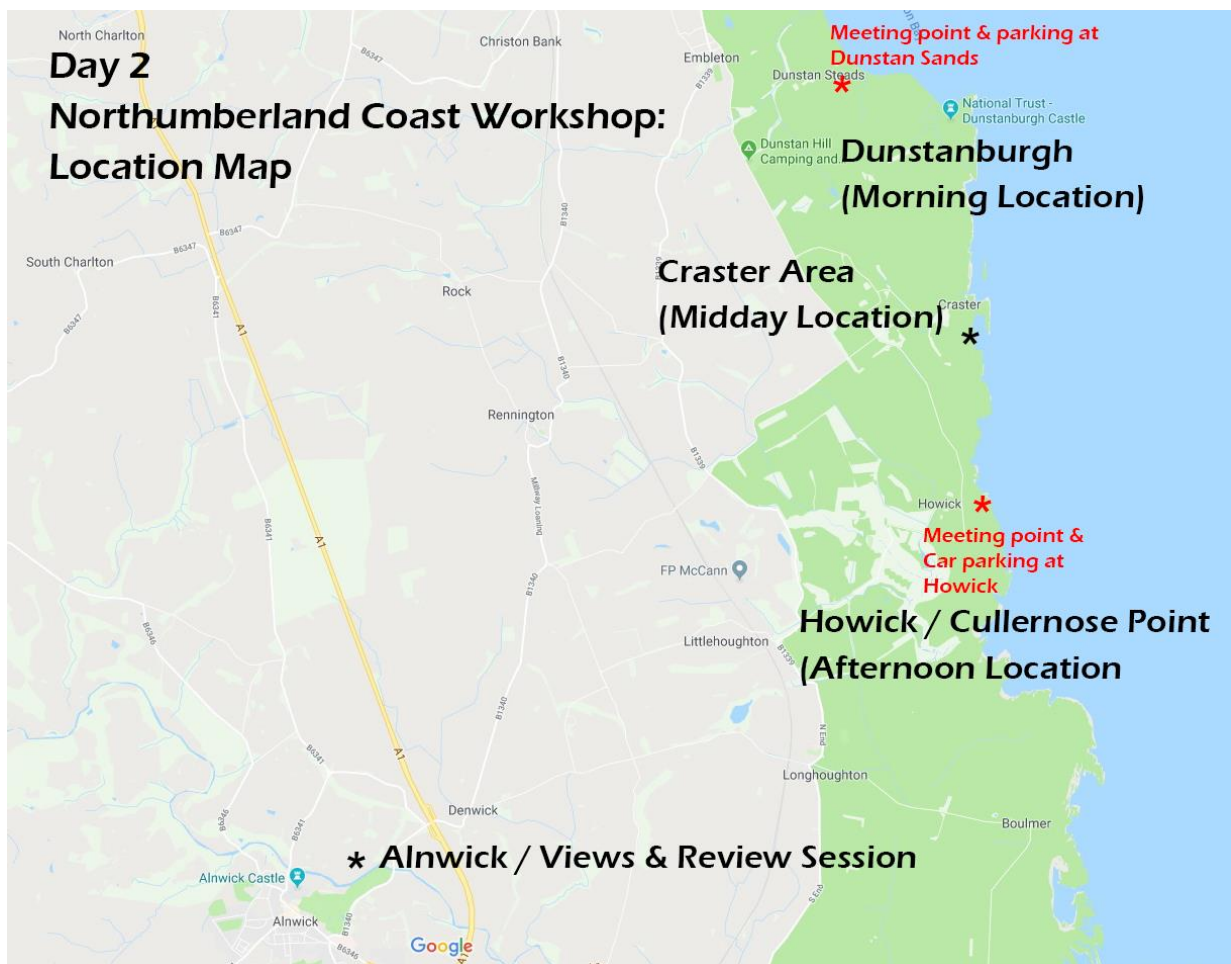
- Parking is next to the visitor centre and costs £1.00 for 2 hours. We can stop for tea / coffee at the visitor centre with a review session (seating is outside so weather dependent).
- We'll do a composition exercise at Craster and explore the harbour and coastline.

Howick (for Cullernose Point):

- There is free parking at a layby near Howick with a short walk to the coastline. We can park here for the duration of the workshop

Alnwick:

- Parking at Alnwick to be confirmed (we'll find a spot for both Castle views and the café stop)



DAY 3 ITINERARY: HADRIANS WALL WORKSHOP (INDICATIVE TIMETABLE)



HADRIANS WALL LANDSCAPE WORKSHOP: DAY 3: Saturday 1st April

The day will be based in the landscapes around Hadrians Wall between Housesteads Roman Fort and Windshields Crags and south of the Wall at Haydon Bridge and the Allen Valley.

Meet at The Sill at 6.30am (the dawn start is optional - alternative is to meet the group at 9am)

Morning Session – Hadrians Wall from Windshields Crags to Crag Lough

The highest and one of the most complete sections of Hadrians wall with extensive views over the surrounding landscape offers opportunities but striking perspective lines, dramatic skies and great imagery both in colour and monochrome. We'll be exploring the area with a view to landscape composition, long exposure and a range of techniques. If there is time we will also travel to Housesteads (though we may go back to this session at the end of the day).

LUNCH BREAK WITH REVIEW SESSION 12.00 - 1.30 pm

Afternoon Session – South of the Wall from Haydon Bridge to Allendale Waterfalls 2.00 pm - 4.00 pm (potential return to Hadrians Wall depending on lighting conditions)

We do a compositional exercise at Haydon Bridge in the afternoon and photograph the bridge. We then travel 5 miles south to Allendale waterfalls, always a good subject for capturing movement as well as photographing some great landscape features. We will keep the end of the day flexible depending on lighting conditions (see below).

Review session (at Cafe in Haydon Bridge). 4.30 - 5.30 pm approx though if the light is promising we will spend longer outside to catch evening light on Hadrians Wall (section to be confirmed)

If it's a clear night on the Saturday and anyone wishes to capture the night sky at Sycamore Gap you are welcome to come along (the track is muddy in places and you will need a torch and walking boots)

www.creativephotographytraining.co.uk

PARKING & OTHER KEY POINTS ABOUT THE WORKSHOP

Windshields Crag to Crag Lough:

- There is parking at The Sill, conveniently located for the start. There is also a YHA there which has cheap accommodation <https://www.thesill.org.uk/>

Haydon Bridge to Allendale

- Parking is available both at Haydon Bridge and at Allendale
- The area we will be working is shown on the map below

Evening Light / Sunset

- We will pop back up to the wall in the evening if the light looks promising.



DAY 4 ITINERARY: NEWCASTLE CITYSCAPE AND ARCHITECTURE WORKSHOP (INDICATIVE TIMETABLE)



NEWCASTLE CITYSCAPE & ARCHITECTURE: DAY 4

Sunday 2nd April 2023

The workshop will be based in the centre of Newcastle Upon Tyne with a focus on the Tyne waterfront and St James's Park area & finishing at The Angel of the North.

WORKSHOP START / MEETING POINT- 6.30 am at Tyne Bridge

We meet at the Sage Centre at Gateshead to practise composition and techniques in architectural photography around the Sage Centre and Millennium Bridge.

Indoor session at Sage Centre

- Use of manual camera controls & setting up your camera for landscape photography
- Understanding Composition & equipment used in landscape photography

The Waterfront from Millennium Bridge to Tyne & High Level Bridges

We continue our work around the Tyne up to the Tyne and High Level Bridges with views to The Sage, Millennium Bridge and Baltic House. The Tyne offers opportunities but striking images, dramatic skies and great imagery both in colour and monochrome. We'll be exploring the area with a view to composition, long exposure and a range of techniques.

Historic Newcastle

The rest of the morning is spent exploring the city with a particular view to architectural composition and architectural details. We'll be practising long exposures and monochrome.

Angel of the North

We finish the workshop at The Angel of the North with compositions from close up and with more general views, again practising long exposure and monochrome

www.creativephotographywales.com

PARKING & OTHER KEY POINTS ABOUT THE WORKSHOP

Sage Centre to Tyne Bridge waterfront sessions:

- There is ample free parking at The Sage Centre and we will leave the cars here all morning. The Centre is open from 9am so we can use the café after the first session
- The initial session involves a walk around the area taking in Baltic House, Sage Centre and Millennium Bridge. After the break we will walk on a route round to The Tyne and High Level Bridges.

St James' Park area (see map below)

- Parking is available on the side streets nearby (2 hour free parking)
- The area we will be working is shown on the map below

Newcastle Cathedral:

- You are free to use tripods in the cathedral but please be careful with them and respect other visitors / users at all times.
- The Cathedral is a 20 minute walk south from St James' Park area. We will leave the cars and walk to the cathedral.
- Café stop / review session at Cathedral area to be confirmed



HEALTH & SAFETY NOTES (advisory only – health & safety of yourself and others is your responsibility)

This photography workshop is based at a number of locations on the Northumberland Coast. We are out for 5-6 hours visiting a number of locations. However we ensure that the course is designed around your capabilities, and if applicable, takes full account of any physical limitations. In all cases we discuss the content of the course with you beforehand based on your answers to the Course Questionnaire.

All locations are on good tracks but involve walks of up to 2 hours. However the following should be remembered:

- **There are steep slopes;** any hills have an element of risk with steep sides. While the hills and structures are on the whole safe, you should be aware of drops & steep slopes at all times. Paths can also be stony and uneven
- **Coastal Landscapes.** Coastal landscapes are exposed, particularly at this time of year. It may also be frosty / snowy. I will advise further if this weather is forecast. In any case you should wear appropriate clothing and footwear.
- **Tides come in quickly:** Although at this time of year, there are generally light winds and calm seas, there is always an inherent danger with incoming tides. You should be aware of this at all times when photographing coastal landscapes.
- **Towns / Villages may be busy:** you will need to share space with other members of the public. Allow them to pass and show courtesy at all times. Do not leave any item of your equipment in a position where it may be a hazard to any other person in the area.
- **Lindisfarne Causeway will be busy:** Traffic quickly builds on the causeway and at times people drive fast on it. Take care when photographing subjects in and around the causeway. I will advise further on conditions on the day.
- **Don't forget how distracted you can be when taking photographs;** look around you at all times. There may be a drop or steps behind you.
- **Never keep your camera on a tripod while walking on uneven or slippery ground.** Always remove it from the tripod and pack it away before moving to a new position. This is because if you do slip, your first instinct will be to protect the camera rather than yourself!
- **Be aware of your tripod:** This can be a trip hazard; it may catch pedestrians out and importantly your camera may fall as a result. Please be aware of this when using your tripod in areas where there will be pedestrians. ***Never use your tripod on a vehicular carriageway.***
- **No Smoking rule: Please note that all our workshops are strictly NO SMOKING,** whether inside or out as you will be in proximity of other course participants



OUR ENVIRONMENT

‘Leave only footprints, take only photographs’: A familiar expression but very relevant to a business promoting photography. Our key principles are as follows:

- **We never leave anything behind:** we always take your litter home including biodegradable matter. We do not accept littering in others.
- **We never cause unnecessary erosion** by straying off used footpaths or tracks, particularly on heavily used rights of way. We never climb on walls or exposed foundations of historic monuments and encourage others not to do so.
- **Our photographic subjects stay where they belong:** from objects found in the landscape to tiny wild flowers always stay where they are and never go to the studio
- **We only go where we’re allowed to:** we only stray off common land or rights of way with permission. We do not climb over walls or over fences to get to a location. We do not climb on monuments or structures unless on public access routes.



Telephone: 01874 676402 / 07815 089835

Email: info@creativephotographytraining.co.uk

Website: www.creativephotographytraining.co.uk