



© Jodi Phillips | www.jodiphillips.com



© Simon Bull | www.simonbullimages.co.uk

# Canvas by Innova

## Aqueous, Eco-Solvent, Latex and UV compatible Digital Fine Art Media

The Innova Art Canvas collection contains a selection of canvases, compatible with aqueous or eco-solvent, latex and UV inkjet technologies.

With flexible coatings specially formulated to reproduce a wide colour gamut and resist cracking during the canvas stretching process, the range includes something for everyone. All of the inkjet canvases in this range feature the unbeatable print quality which makes Innova the preferred media for professional printers worldwide.

If you are a digital print service provider looking to expand into offering stretched canvases or a fine artist looking for the ideal match to an original artwork, you will find a canvas here. A selection of matte, semi-gloss and gloss surfaces in the Innova Canvas range makes each canvas suitable for a range of applications. This includes fine art, photo or graphic art reproduction as open or limited edition prints and stretched canvases. The eco-solvent, latex and UV inkjet compatible canvases provide options for giclée prints as well as banners, signage and POS displays.





# Canvas Range



## Exhibition Matte Polyester Canvas 260gsm IFA-052

This 100% polyester inkjet canvas is compatible with aqueous dye and pigment inks.

Perfect for stretching over wooden frames this lightweight polyester canvas is ideal for use in high production environments. The smooth matte surface and tight weave pattern mean that this inkjet canvas is the optimal choice for images with a high level of fine details. Perfect for photographic and fine art prints, either reproductions or originals, in limited or open editions.



Roll Formats			
Product No.	SKU	Roll Width	Roll Length
IFA-052-R0432-030		432mm/17"	30m/100ft
IFA-052-R0610-030		610mm/24"	30m/100ft
IFA-052-R0914-030		914mm/36"	30m/100ft
IFA-052-R1118-030		1118mm/44"	30m/100ft
IFA-052-R1524-030		1524mm/60"	30m/100ft



## Exhibition Matte Cotton Canvas 370gsm IFA-054

This natural white 100% cotton matte inkjet canvas is compatible with aqueous dye and pigment ink.

Ideal for stretching, the archival quality, OBA free base means that your prints will last for decades to come when produced and stored under the right conditions. An excellent colour gamut ensures consistent colour reproduction, suitable for both colour and black and white reproductions. The heavyweight makes this instant dry canvas a perfect material for mixed media artworks.



Roll Formats			
Product No.	SKU	Roll Width	Roll Length
IFA-054-R0432-015		432mm/17"	15m/50ft
IFA-054-R0610-015		610mm/24"	15m/50ft
IFA-054-R0914-015		914mm/36"	15m/50ft
IFA-054-R1118-015		1118mm/44"	15m/50ft
IFA-054-R1524-015		1524mm/60"	15m/50ft



## Exhibition Matte Polycotton Canvas 380gsm IFA-055

Look no further for a matte inkjet canvas with unbeatable image quality.

Compatible with aqueous pigment and dye inks, the pronounced weave pattern and heavyweight make this the ultimate fine art canvas. A high level of crack resistance means you can start producing your own stretched canvases for indoor display in next to no time. Combined with an excellent colour gamut and water resistant properties means that your prints will have high impact for decades to come.



Roll Formats			
Product No.	SKU	Roll Width	Roll Length
IFA-055-R0432-015		432mm/17"	15m/50ft
IFA-055-R0610-015		610mm/24"	15m/50ft
IFA-055-R0914-015		914mm/36"	15m/50ft
IFA-055-R1118-015		1118mm/44"	15m/50ft
IFA-055-R1524-015		1524mm/60"	15m/50ft



## Exhibition Gloss Polycotton Canvas 390gsm IFA-056

Are you looking for a fine art canvas for photo printing? Try this glossy inkjet canvas is compatible with aqueous dye and pigment inks.

The open weave pattern gives a uniform texture to your giclée canvas print for a fantastic photo finish. A natural white colour gives your images a neutral base and an excellent colour gamut means that tonal ranges are accurately reproduced. This inkjet canvas is ideal for producing fine art or photographic canvas prints on demand.



Roll Formats			
Product No.	SKU	Roll Width	Roll Length
IFA-056-R0432-015		432mm/17"	15m/50ft
IFA-056-R0610-015		610mm/24"	15m/50ft
IFA-056-R0914-015		914mm/36"	15m/50ft
IFA-056-R1118-015		1118mm/44"	15m/50ft
IFA-056-R1524-015		1524mm/60"	15m/50ft

## Jodi Phillips

Jodi Phillips began painting in 1997, following a 12 year graphic design career. Jodi is a unique and versatile artist whose work is about colour and balance. Heavily textured or totally smooth, always with her signature rich metallic touch. Jodi has sold her works internationally including Europe, USA, Singapore, Japan and Egypt as well as widely across the UK. After discovering the Giclée print process in 2000, at Spring Fair, she began selling her work as giclée editions on Innova Art Canvas and has never looked back.

*"Jodi hand embellishes the prints to achieve the magic light catching luminosity that signifies her work... The entrancing texture and light of the original is not lost in the printing. There is still a depth and flow that draws your eye to the canvas."* Mike Ramos-Gonzalez, MD, Innova Art

[www.jodiphillips.com](http://www.jodiphillips.com)



© Jodi Phillips | [www.jodiphillips.com](http://www.jodiphillips.com)

## Eco-Solvent , Latex and UV Inkjet Compatible



## Eco Solvent Polyester Canvas 240gsm IFA-095

This 240gsm semi-gloss canvas is compatible with eco-solvent, latex and UV inkjet technology.

A great option for printers in the sign and graphics market who are looking to diversify into the lucrative home décor sector. This canvas has the high print quality associated with all Innova media, can be stretched around frames without cracking and is also water resistant. These combined properties make this a dual purpose media that can be used for outdoor display advertising or fine art prints.



Roll Formats			
Product No.	SKU	Roll Width	Roll Length
IFA-095-R0762-025		762mm/30"	25m/82ft
IFA-095-R1372-025		1372mm/54"	25m/82ft
IFA-095-R1524-025		1524mm/60"	25m/82ft



## Eco Solvent Poly Cotton Canvas 370gsm IFA-096

Produce high volume, yet sophisticated fine art and photographic prints with this eco-solvent, latex and UV compatible inkjet canvas.

Suitable for both limited and open edition prints for the décor art market as well as stretched canvases and gallery wraps for interior imaging. The high white, semi-gloss surface offers excellent colour reproduction, producing vibrant, eye catching images. The heavyweight of this canvas makes it a great option for banners too.



Roll Formats			
Product No.	SKU	Roll Width	Roll Length
IFA-096-R0762-025		762mm/30"	25m/82ft
IFA-096-R1372-025		1372mm/54"	25m/82ft
IFA-096-R1524-025		1524mm/60"	25m/82ft

### Eco-Solvent Ink

- Pigment suspended in a mild solvent.
- Water and sunlight resistant.
- Good for printing indoor or outdoor displays.
- High resolution output.
- Rich colour gamut with semi-gloss finish.
- Print on coated substrates.

### Latex Ink

- Pigment suspended in water with microscopic polymer particles.
- No solvents so no need for additional ventilation.
- Waterproof, sunlight and crack resistant.
- Biodegradable and odourless.
- Good for printing indoor or outdoor displays.
- High resolution output.
- Excellent print quality with vibrant colours.
- Print on substrates able to withstand high temperatures.

### UV Ink

- Pigment suspended in monomer organic compound with oligomer polymer and photo initiators.
- No solvents so no need for additional ventilation.
- Water, sunlight, scratch and scuff resistant.
- Odourless.
- Good for printing indoor or outdoor displays.
- High resolution output.
- No need for lamination or additional coating after printing.
- Print on almost any substrate.
- Option for rigid (flatbed) or flexible (roll to roll) application formulations.



## What is Giclée Printing?

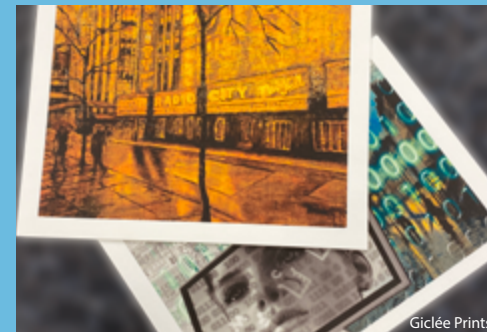
Giclée printing is a marketing term, first used in the early nineties: the first documented use of the word giclée in reference to a print was in 1991. The development of the term is credited to Jack Duganne, a printmaker working at Nash Editions in California, USA at the time. Trying to differentiate the prints produced on the IRIS printer at Nash Editions from commercial inkjet proofs and the (at the time) negative connotations associated with the terms 'inkjet' and 'computer generated' art print. Duganne turned to the French language seeking a more neutral term.

Derived from the French *gicleur*, meaning nozzle, the feminine verb form is *la giclée*, meaning to spray. Identifying this with the action of a print head putting ink onto a paper surface, Duganne

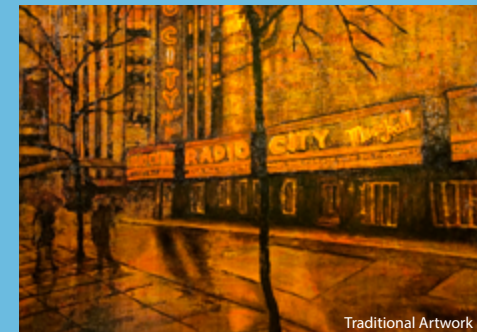
felt the term 'giclée print' served marketing purposes perfectly. 'Giclée prints' took off and the digital fine art printing industry was born. The term 'giclée print' is still associated with high end, high quality fine art prints produced using inkjet technology. However the move towards accepting digital technology means it is now more freely interchangeable with the terms 'inkjet print', 'archival pigment print' or 'digital print', used to refer to prints of artwork originally created in a digital environment or reproductions of artwork in traditional mediums.



Digital Artwork



Giclée Prints



Traditional Artwork





## Create Effortless Canvas Displays

Using innovative display products from Innova Art, you can easily create eye catching canvas displays - without the need for specialist training.

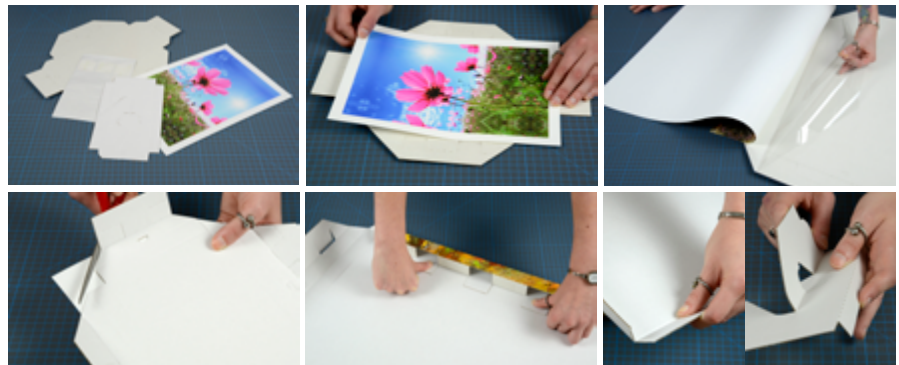
Using the patented GOframe system you can create professional stretched canvases in minutes. Using the specially developed wooden bar system, you do not need specialist skills to make these true canvas frames. Just position the wooden bars on the back of your canvas print, apply pressure and secure the corners in place. You can even create truly bespoke sizes using the unique Bar Trimming Station.



## A Stretched Canvas Alternative

If a lightweight alternative to stretched canvas is something that appeals to you, look no further than the JetMaster Photo Wrap.

Combined with specially developed JetMaster® Canvas Effect Paper, these frames create a weightless canvas effect three dimensional display in minutes. Available in a range of standard sizes, simply remove the release liner from the cardboard base, apply your print, fold along the pre scored and cut lines, then fold the edges round and secure to the back of the board. Effortless displays every time just print, wrap and display. See more information online: [www.innovaart.com](http://www.innovaart.com)



Demonstration videos for the GOframe canvas stretching system and the JetMaster Photo Wrap image display systems are available on the Innova Art YouTube Channel

Worldwide: +44 (0) 1992 571 775  
info@innovaart.com  
USA: +1 856-456-3200

Follow Innova Art:



For details of resellers and distributors please visit our website



# Canvas