

PHOTO WRAP

PHOTO PANEL

ACRYLIC

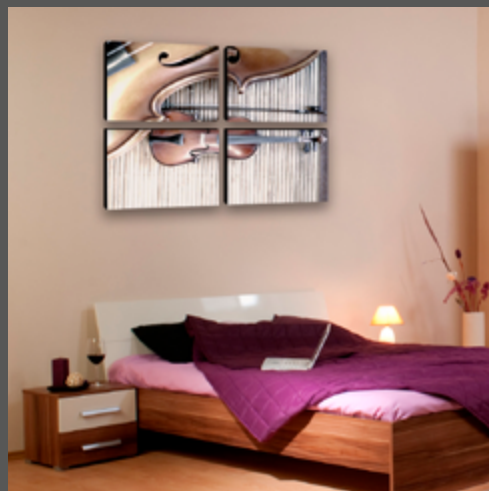
METAL

UV DIRECT PRINT PHOTO WRAP

UV DIRECT PRINT PHOTO PANEL

AQUEOUS DIRECT PRINT PHOTO WRAP

PAPER





JetMaster®

PHOTO WRAP



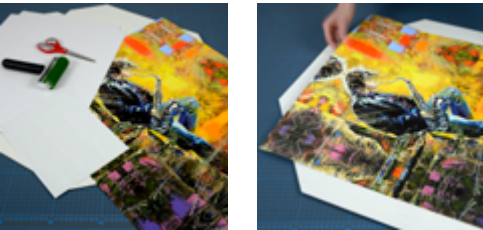
With no need for stretcher bars, glue or staples, the JetMaster® Photo Wrap reduces the time it takes to produce a professional gallery wrap to minutes. Using just a craft knife and cutting mat or scissors no special skills are required and using the specially developed JetMaster® Paper means you can mount your prints straight from the printer with no drying time required.

The base is pre cut laminated self adhesive board. Simply remove the release liner and press your print into place. No bubbles when mounting

and no battle against untidy corners, just tuck in the excess media and keep constructing your frame. A fully assembled JetMaster® Photo Wrap can be hung from just one tack.

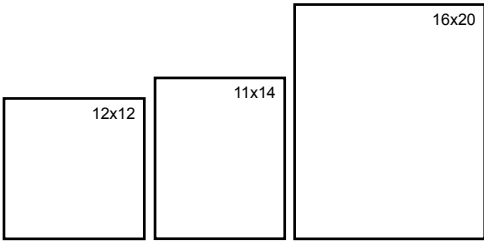
There is no longer any need in retail for expensive outsourcing of canvas wraps to specialist print shops. You can offer your customers a one stop shopping experience and, with the online upload utility, they can have a finished gallery wrap in under half an hour.

Print - Wrap - Display



Size	Product No.	Frames Per Box	Media Size Required* Inches	mm	Minimum Printer Size	Finished Face Size Inches	mm	Finished Frame Depth Inches	mm
11x14	JMD-CR708A	10	16.65x19.95	423x507	17" roll or A2 sheet fed	11x14	280x357	1.5	38
12x12	JMD-CR707A	10	17.95x17.95	456x456	24" roll or A1 sheet fed	12x12	305x305	1.5	38
16x20	JMD-CR709A	10	21.95x25.95	558x659	24" roll or A1 sheet fed	16x20	406x508	1.5	38

*Print media is not included with frames.



Photoshop Templates Available To Download Online

JetMaster® Instruction Video Available On YouTube



JetMaster®

PAPER

Free Online JetMaster® Photo Wrap Print Utility

Crop your image and create edge effects for your canvas wrap without even opening Adobe Photoshop. Simply visit our website and follow the link to the Print Utility.

Select your image file from your local drive and upload, then select the finished frame size. Crop your image if required.

Choose from a range of edge finish options, including mirror or gallery wrap. You can even use the colour picker to select a value from your image for a solid colour.

Download and save the print ready PDF to print at home or send to your local print shop. It is already sized to the right dimensions for your frame. The best media to use on the JetMaster® Photo Wrap is JetMaster® Paper Canvas Effect 165gsm.

JetMaster® Paper Canvas Effect 165gsm IFA 129

JetMaster®

PAPER

Compatible with pigment and dye (aqueous) inkjet printers, JetMaster® Paper Canvas Effect 165gsm has been specifically developed for use with JetMaster® Photo Wrap frames.

A flexible base and coating combine to ensure that the printed surface does not crack when folding. The surface texture emulates a woven canvas, making this a great alternative to canvas printing - even if stretching over wooden bars.

Compatible with pigment and dye (aqueous) inkjet printers, JetMaster® Paper Canvas Effect 165gsm has been specifically developed for use with JetMaster® Photo Wrap frames.

Sheet Formats		
Size	Sheets Per Box	Product No.
A4	50	IFA-129-S0210-050
A3	50	IFA-129-S0297-050
A3+ (13x19")	50	IFA-129-S0329-050

Roll Formats		
Roll Width	Roll Length	Product No.
432mm/17"	30m/100ft	IFA-129-R0432-030
610mm/24"	30m/100ft	IFA-129-R0610-030
1118mm/44"	30m/100ft	IFA-129-R1118-030

Designed for use with the JetMaster® Photo Wrap





JetMaster®

PHOTO PANEL

Print - Stick - Display



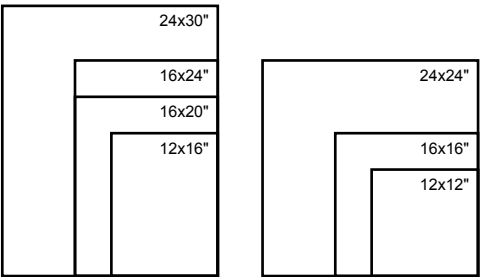
Designed for use with resin coated photo papers, the JetMaster® Photo Panel creates effortless impact for your images.

A lightweight alternative to solid MDF display blocks, this photo mount has a pressure sensitive adhesive face and is available in a range of sizes with a choice of two smart matte edge finishes.

JetMaster® Photo Panels are simple to create and can be wall mounted or used as an attractive addition to any desk. The finished Panel size is slightly smaller than the media size required.

This enables a clean edge finish without needing to set up custom page sizes.

- Stylish frame free photo mount
- Choice of black or white matte edge finish
- Permanent pressure sensitive adhesive



JetMaster® Photo Panel for Wall Display										
Size	Product No.	Edge Colour	Frames Per Box	Media Size Required*		Minimum Printer Size	Finished Face size		Finished Frame Depth	
				Inches	mm		Inches	mm	Inches	mm
12x12	JMPP305X305B-8	Black	8	12x12	305x305	17" roll or A3+ sheet fed	11.75x11.75	299x299	1	25
	JMPP305X305W-8	White								
12x16	JMPP305X406B-8	Black	8	12x16	305x406	17" roll or A3+ sheet fed	11.75x15.75	299x400	1	25
	JMPP305X406W-8	White								
16x16	JMPP400x400B-8	Black	8	16x16	406x406	17" roll or A2 sheet fed	15.75x15.75	400x400	1	25
	JMPP400x400W-8	White								
16x20	JMPP400X502B-8	Black	8	16x20	406x508	17" roll or A2 sheet fed	15.75x19.7	400x502	1	25
	JMPP400X502W-8	White								
16x24	JMPP400X599B-8	Black	8	16x24	406x610	17" roll or A2 sheet fed	15.75x23.6	400x599	1	25
	JMPP400X599W-8	White								
24x24	JMPP599X599B-8	Black	8	24x24	610x610	24" roll or A1 sheet fed	23.6x23.6	599x599	1	25
	JMPP599X599W-8	White								
24x30	JMPP599X749B-5	Black	5	24x30	610x762	36" roll or A1 sheet fed	23.6x29.6	599x749	1	25
	JMPP599X749W-5	White								

*Print media not included, resin coated photo paper is recommended. Custom JetMaster® Photo Panel sizes and edge finishes available on request, subject to minimum order quantities.

JetMaster® Instruction Video Available On YouTube



JetMaster® Photo Panel for Desktop or Wall Display										
Size	Product No.	Edge Colour	Frames Per Box	Media Size Required*		Minimum Printer Size	Finished Face size		Finished Frame Depth	
				Inches	mm		Inches	mm	Inches	mm
A4	JMPP210X297B-10	Black	10	8.26x11.69	210x297	Desktop	7.9x11.3	201x287	1	25
A3	JMPP297X420B-8	Black	8	8.26x16.53	210x420	17" roll or A3 sheet fed	11.3x16.1	201x409	1	25
A3+ / 13x19	JMPP329X483B-8	Black	8	13x19	329x483	17" roll or A3+ sheet fed	12.5x18.6	318x473	1	25
	JMPP329X483W-8	White								
5x5	JMPP127X127B-10	Black	10	5x5	127x127	Desktop	4.7x4.7	120x120	1	25
	JMPP127X127W-10	White								
5x7	JMPP127X178B-10	Black	10	5x7	127x178	Desktop	4.7x6.7	120x171	1	25
	JMPP127X178W-10	White								
6x8	JMPP152X203B-10	Black	10	6x8	152x203	Desktop	6.7x7.7	171x196	1	25
	JMPP152X203W-10	White								
8x8	JMPP203X203B-10	Black	10	8x8	203x203	Desktop	7.7x7.7	196x196	1	25
	JMPP203X203W-10	White								
8x10	JMPP203X254B-10	Black	10	8x10	203x254	Desktop	7.7x9.7	196x247	1	25
	JMPP203X254W-10	White								
8x12	JMPP203X305B-10	Black	10	8x12	203x305	17" roll or A3 sheet fed	7.7x11.75	196x299	1	25
	JMPP203X305W-10	White								
11x14	JMPP279X356B-10	Black	10	11x14	279x356	17" roll or A3+ sheet fed	10.7x13.7	272x348	1	25
	JMPP279X356W-10	White								
8x20	JMPP203X508B-5	Black	5	8x20	203x508	17" roll or A2 sheet fed	7.7x19.7	196x502	1	25

*Print media not included, resin coated photo paper is recommended. Custom JetMaster® Photo Panel sizes and edge finishes available on request, subject to minimum order quantities.

See Next Page For Rotary Cutter, Alignment Frame, Silicone Roller and Cutting Matt

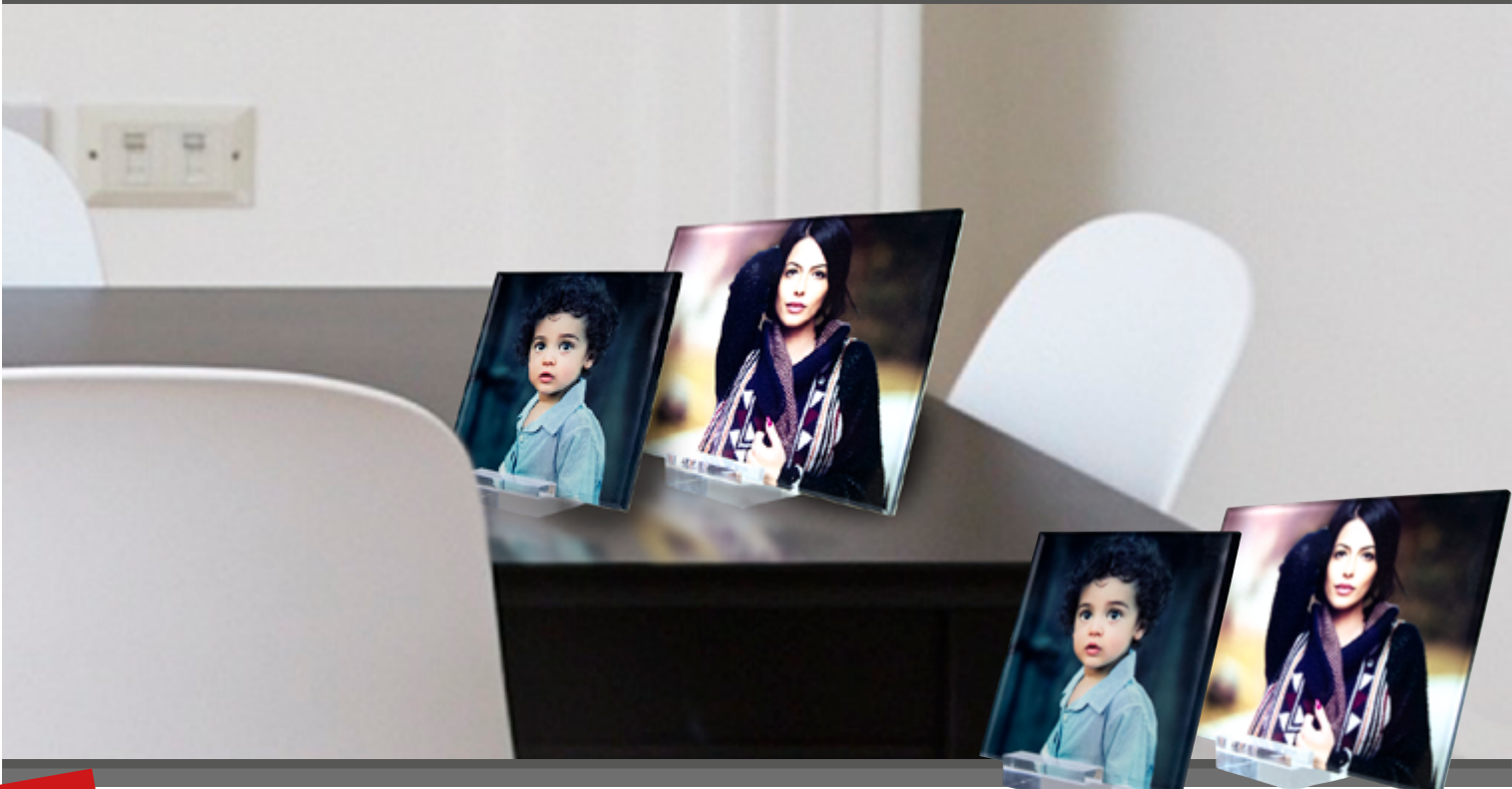
Black or White Edge Options on Selected Sizes

Smaller sizes can be desktop or wall mounted

Olmec™ Resin Coated Inkjet Photo Papers: the perfect pairing for JetMaster® Photo Panel Available from Innova Art

www.innovaart.com

www.jetmaster-systems.com

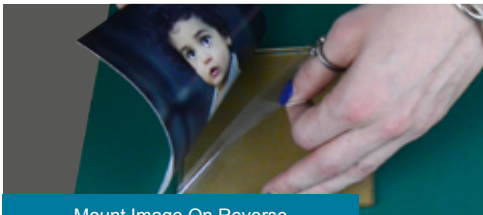


New

JETMASTER®

ACRYLIC

Print - Stick - Display



Mount Image On Reverse

JetMaster® Acrylic is the ultimate easy to use image display media. Simply print on Resin Coated media and mount on the back of an adhesive acrylic plate. Ideal for a while you wait option in photo retail stores. JetMaster® Acrylic also makes a great do it yourself gift option, all you need is an inkjet printer and standard resin coated inkjet photo paper.

General Specifications:

- Thickness: 5mm
- Crystal clear
- Bevelled edges
- Easy to make
- For use with resin coated photo paper



Bevelled Edge



Desk Stand Included with All Sizes

JetMaster® Acrylic											
Size	Product No.	Edge Type	Panels Per Box	Media Size Required*		Minimum Printer Size	Finished Face Size		Stand Included	Finished Frame Depth	
				Inches	mm		Inches	mm		Inches	mm
4x6	JMA-149-0406-010-01	Bevelled	10	4x6	102x152	Desktop	3.75x5.75	95x146	Yes	0.2	5
5x5	JMA-149-0505-010-01	Bevelled	10	5x5	127x127	Desktop	4.75x4.75	121x 121	Yes	0.2	5
5x7	JMA-149-0507-010-01	Bevelled	10	5x7	127x178	Desktop	4.75x6.75	121x 172	Yes	0.2	5
6x8	JMA-149-0608-010-01	Bevelled	10	6x8	152x203	Desktop	5.75x7.75	146x248	Yes	0.2	5
8x10	JMA-149-0810-010-01	Bevelled	10	8x10	203x254	Desktop	7.75x9.75	197x 248	Yes	0.2	5
8x12	JMA-149-0812-010-01	Bevelled	10	8x12	203x305	Pro Desktop	7.75x11.75	248x298	Yes	0.2	5

*Print media not included, resin coated photo paper is recommended. Custom JetMaster® Acrylic sizes available on request, subject to minimum order quantities.

JETMASTER® Instruction Video Available On YouTube

Olmec™ Resin Coated Inkjet Photo Papers:
the perfect partner for JetMaster® Acrylic
Available from Innova Art
www.innovaart.com



JETMASTER®

PHOTO PANEL

Tools that can be used time and time again to create multiple styles of self adhesive image display.

For use primarily with the JetMaster® Photo Panel and JetMaster® Acrylic, these tools will help you get the perfect finish every time.

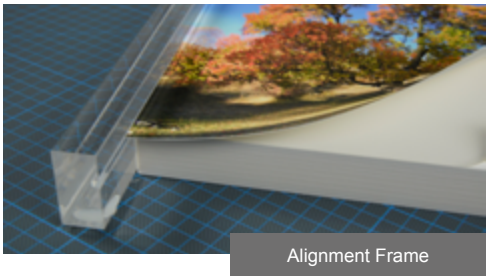
Use the alignment frame to ensure your image is positioned perfectly. A silicone roller on your JetMaster® Photo Panel or squeegee on your JetMaster® Acrylic will ensure that all air bubbles are removed. The rotary cutter is a safer alternative to using a craft knife and a cutting matt will protect your work surface from accidental damage.

JETMASTER®

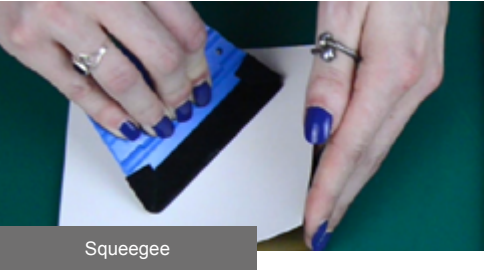
ACRYLIC



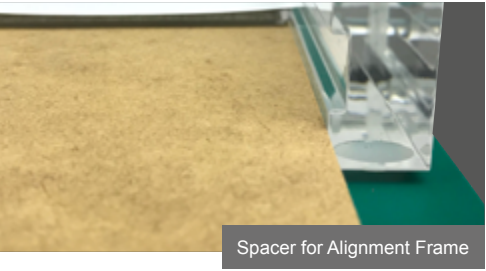
Silicone Roller



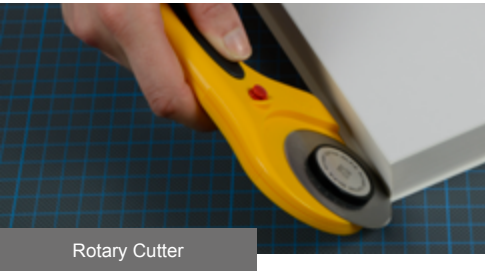
Alignment Frame



Squeegee



Spacer for Alignment Frame



Rotary Cutter



Cutting Matt

JetMaster® Tools			
Tool	Product No.	Quantity	Product Compatibility
Squeegee	JMA-148-00SQ-002-02	2	JetMaster® Acrylic
Alignment Frame Spacer	JMA-148-00AF-001-02	1	JetMaster® Acrylic
Acrylic Starter Kit	JMA-148-00SK-002-02	1 Squeegee 1 Spacer	JetMaster® Acrylic
Alignment Frame	JMPP-Ruler	1	JetMaster® Photo Panel JetMaster® Acrylic
Rotary Cutter	JMPP-Cutter-28mm	1	JetMaster® Photo Panel JetMaster® Acrylic
Rotary Cutter Blade	JMPP-Blades-28mm	2	JetMaster® Photo Panel JetMaster® Acrylic
Cutting Matt	JMPP-Matt	1	JetMaster® Photo Panel JetMaster® Acrylic
Silicone Roller	JMPP-ESD-Roller	1	JetMaster® Photo Panel



New

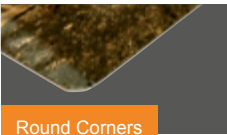
JETMASTER®

METAL

JetMaster® Metal features an ultra smooth surface with bright white coating and high gloss finish. Designed for use with dye sublimation inks and the heat transfer process. For best results, use in combination with JetMaster® Dye-Sublimation Transfer Paper: designed for rigid substrates. JetMaster® Metal can reproduce dense blacks, vivid colours and all tonal ranges in between. Finished plates are hard wearing and resilient, requiring no additional treatments to protect them.

General Specifications:

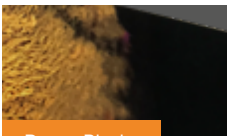
- Thickness: 1mm
- High gloss surface
- Dye-sublimation heat transfer process
- For best results, use with JetMaster® Dye-Sublimation Paper



Round Corners



High Gloss



Dense Blacks



Sharp Details



Easily Cut



No Cracking



Print - Transfer - Display

JetMaster® Metal					
Size				Media	Size Required
Inches	mm	Product No.	Plates Per Box	Inches	mm
Small Format					
4 x6	102x152	JMS-147-0406-010	10	4.8x6.8	122x172
5x5	127x127	JMS-147-0505-010	10	5.8x5.8	147x147
5x7	127x178	JMS-147-0507-010	10	5.8x 7.8	147x198
8x8	203x203	JMS-147-0808-010	10	8.8x8.8	223x223
8x10	203x254	JMS-147-0810-010	10	8.8x10.8	223x274
Large Format					
8x12	203x305	JMS-147-0812-010	10	8.8x12.8	223x325
11x14	279x356	JMS-147-1114-010	10	11.8x14.8	299x376
12x12	305x305	JMS-147-1212-010	10	12.8x12.8	325x325
12x16	305x406	JMS-147-1216-010	10	12.8x16.8	325x426
12x18	305x457	JMS-147-1218-010	10	12.8x18.8	325x477
12x24	304x610	JMS-147-1224-010	10	12.8x24.8	325x630
16x20	406x508	JMS-147-1620-010	10	16.8x20.8	426x528
16x24	406x610	JMS-147-1624-010	10	16.8x24.8	426x630
20x24	508x610	JMS-147-2024-010	10	20.8x24.8	528x630
20x28	508x711	JMS-147-2028-010	10	20.8x28.8	528x731
20x30	508x762	JMS-147-2030-010	10	20.8x30.8	528x782
24x24	610x610	JMS-147-2424-010	10	20.8x30.8	528x782
24x30	610x762	JMS-147-2430-010	10	24.8x24.8	620x620
24x36	610x914	JMS-147-2436-010	10	24.8x30.8	620x782
30x40	762x1016	JMS-147-3040-010	10	30.8x40.8	782x1036
11.8x15.7	300x400	JMS-147-M300-010	10	12.6x16.5	320x420
15.7x23.6	400x600	JMS-147-M400-010	10	16.5x24.4	420x620
19.7x27.5	500x700	JMS-147-M500-010	10	20.5x28.4	520x720
23.6x35.4	600x900	JMS-147-M600-010	10	24.4x36.2	620x920
Master Sheets					
48x96	1220x2440	JMS-147-MS48-001	1	48.8x96.8	1240x2460



Sublimate at 180-190°C



New

JETMASTER®

PAPER



JetMaster® Dye-Sublimation Paper
190gsm IFA 147

Compatible with dye sublimation inks, this paper has been specifically developed for use with rigid substrates. It can take a high ink load without cockling, does not shrink when exposed to heat, reduces the likelihood of outgassing and creates a bond with the substrate to prevent ghosting.

General Specifications:

- Developed for rigid substrates
- Does not cockle or shrink
- For best results sublimate with JetMaster® Metal

Sheet Formats		
Size	Sheets Per Box	Product No.
A4	50	IFA-147-S0210-050
A3	50	IFA-147-S0297-050

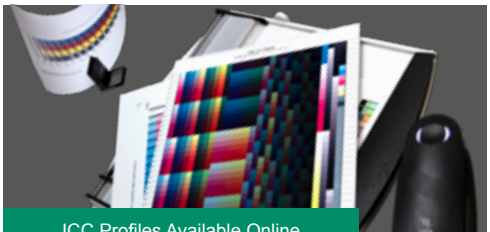
Roll Formats		
Roll Width	Roll Length	Product No.
1118mm/44"	40m/131ft	IFA-147-R1118-040
1524mm/60"	40m/131ft	IFA-147-R1524-040

“ I am so pleased with the results of JetMaster® Dye-Sublimation Paper. I couldn't possibly go back to the media I was using before. With JetMaster® Paper the blacks are so much richer, the details are sharper and it feels like more ink is actually passed into the surface of the metal plates...Even better, I have significantly reduced waste because the image sublimates right to the edge every time. ”

- Fine Art Photographic Dye-Sublimation Printmaker -
- The Netherlands -



High Ink Release



ICC Profiles Available Online



No Wet Cockling

Designed for use with JetMaster® Metal



JETMASTER® UV DIRECT PRINT PHOTO WRAP

It used to be difficult and expensive to ship canvas wraps to your customers. Now you can print and ship them flat and your customer can easily assemble the frame in their own home or office.

The JetMaster® UV Direct Print Photo Wrap comes with a canvas effect embossed surface. Ideal for home décor, temporary/disposable point of sale displays as well as exhibition graphics and signage. The durable and lightweight prints can be stored and shipped flat without damage. Simply position the flat frame on a UV flatbed printer, print, then either ship flat or create an instant canvas effect frame.

General Specifications:

- Thickness: 2.2mm
- Double walled corrugated
- PSA back layer
- Recycled content
- Recyclable
- No tools required
- Easy to assemble

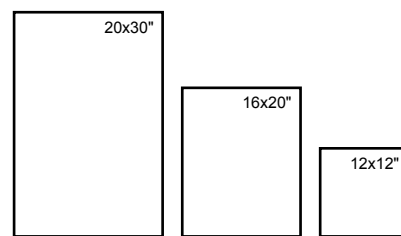


**Print Flat
- Ship Flat -
Fold - Display**

Size	Product No.	Frames Per Box	Printer Type	Finished Face Size		Finished Frame Depth	
				Inches	mm	Inches	mm
12x12	JMDPT305x305-10	10	UV Flat Bed / UV Hybrid	12x12	305x305	1.5	38
16x20	JMDPT406x508-10	10	UV Flat Bed / UV Hybrid	16x20	406x508	1.5	38
20x30	JMDPT508x763-10	10	UV Flat Bed / UV Hybrid	20x30	508x762	1.5	38

Printer Compatibility:

- ✓ Jetrix 2030
- ✓ Océ
- ✓ EFI/Vutek
- ✓ FujiFilm
- ✓ Scitex
- ✓ Roland
- ✓ Mutoh
- ✓ Mimaki
- ✓ Agfa
- ✓ Gandy
- ✓ Swiss Qprint Nayla



Multi Colour



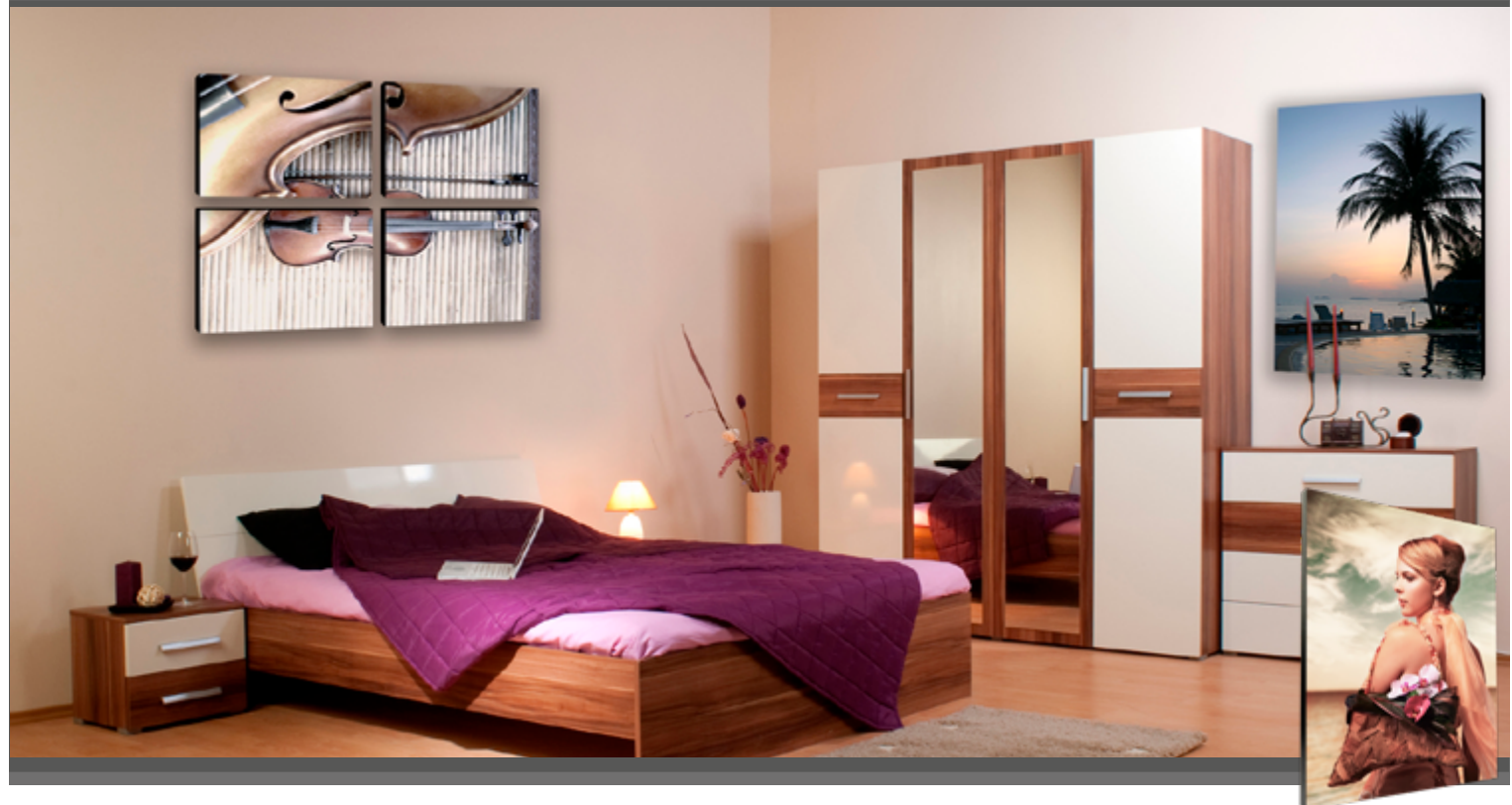
Mirror Wrap



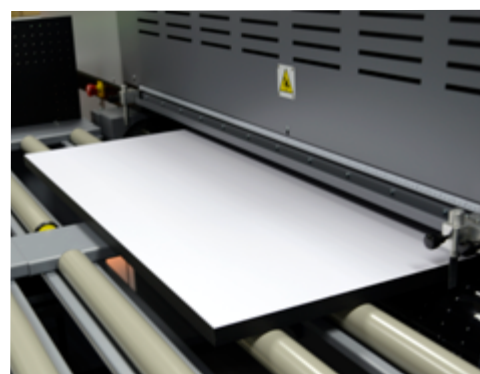
Gallery Wrap

Create Edge Effects: Download Print Templates Online

JETMASTER® Instruction Video Available On YouTube
UV DIRECT PRINT PHOTO WRAP



JETMASTER® UV DIRECT PRINT PHOTO PANEL



Print - Display

Create effortless impact for your images. A lightweight alternative to solid MDF display blocks, this photo display frame can be printed directly on a UV flatbed printer; just position, print and display.

The printable surface is finished in a bright white colour, no need to print white first, available in a range of sizes with a smart black matte edge finish.

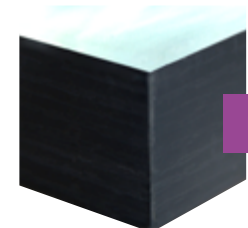
General Specifications:

- Direct UV printable
- Thickness: 1 inch
- Lightweight
- No tools required
- Pre drilled holes on back for easy hanging

Printer Compatibility:

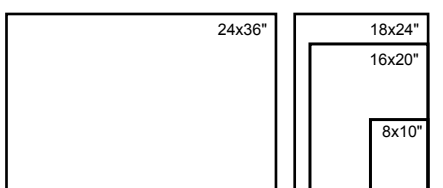
- ✓ Jetrix 2030
- ✓ Océ
- ✓ EFI/Vutek
- ✓ FujiFilm
- ✓ Scitex
- ✓ Mutoh
- ✓ Mimaki
- ✓ Agfa
- ✓ Gandy
- ✓ Swiss Qprint Nayla

Size	Product No.	Frames Per Box	Printer Type	Finished Face Size		Finished Frame Depth	
				Inches	mm	Inches	mm
8x10	JMPP-203X254DP-10	10	UV Flat Bed / UV Hybrid	8x10	203x254	1	25
16x20	JMPP400X502DP-5	5	UV Flat Bed / UV Hybrid	16x20	406x508	1	25
18x24	JMPP457X609DP-8	8	UV Flat Bed / UV Hybrid	18x24	457x610	1	25
24x36	JMPP609X914DP-5	5	UV Flat Bed / UV Hybrid	24x36	610x914	1	25



Black Edging on All Sizes

8x10" Includes Desk Stand



JETMASTER® Multiple Print Technique Video Available On YouTube
UV DIRECT PRINT PHOTO PANEL

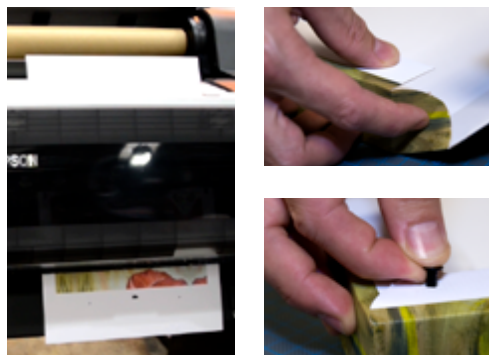


New

JETMASTER®

AQUEOUS DIRECT PRINT PHOTO WRAP

Print - Fold - Display



Pigment and Dye Ink Compatible

The JetMaster® Aqueous Direct Print Photo Wrap comes with a semi-gloss, canvas effect embossed surface.

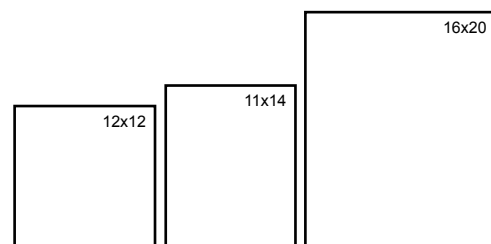
Ideal for home décor or exhibition display. The lightweight prints can be stored and shipped flat without damage. Simply feed the flat frame into your inkjet printer and print using a poster board media setting. Then attach the edge pieces and fold to create a semi-gloss canvas effect photo wrap display.

General Specifications:

- Thickness: 1mm
- Double walled corrugated
- PSA back layer
- Recycled content
- Recyclable
- No tools required
- Easy to assemble



Stores and Ships Flat



Size	Product No.	Frames Per Box	Media Size		Printer Type	Finished Face Size		Finished Frame Depth	
			Inches	mm		Inches	mm	Inches	mm
11x14	JMW-142-1114-010	10	16.9x25.8	430x655	17" with Board Feed	11x14	280x357	1.5	38
12x12	JMW-142-1212-010	10	17.9x23.7	456x604	24" with Board Feed	12x12	305x305	1.5	38
16x20	JMW-142-1620-010	10	21.9x31.8	557x807	24" with Board Feed	16x20	406x508	1.5	38

JETMASTER® Instruction Video Available On YouTube

AQUEOUS DIRECT PRINT PHOTO WRAP

www.jetmaster-systems.com
info@jetmaster-systems.com
+44 (0) 1992 571775
+1 856-456-3200

JETMASTER®
Image Display Systems

Search JetMaster Systems on YouTube



by Innova

JetMaster® Image Display Systems are manufactured and distributed by Innova Art. For more information about Innova and their range of archival inkjet media visit www.innovaart.com