



ADAPTALUX

The Adaptalux Studio is a modular miniature lighting studio that allows for unrivalled lighting customisation.

Designed specifically for macro photography, it is the complete lighting system for creative close-up photography and videography.

Featuring a 12 hour built in battery and Bluetooth connection, you can take light into the field and control each Lighting Arm remotely or manually.

90 CRI and high brightness lighting options give you excellent lighting quality for every situation. Add colour and diffusion system with ease using our patented magnetic attachment system.



Learn more at

[WWW.ADAPTALUX.COM](http://WWW.ADAPTALUX.COM)



Join the Adaptalux Community

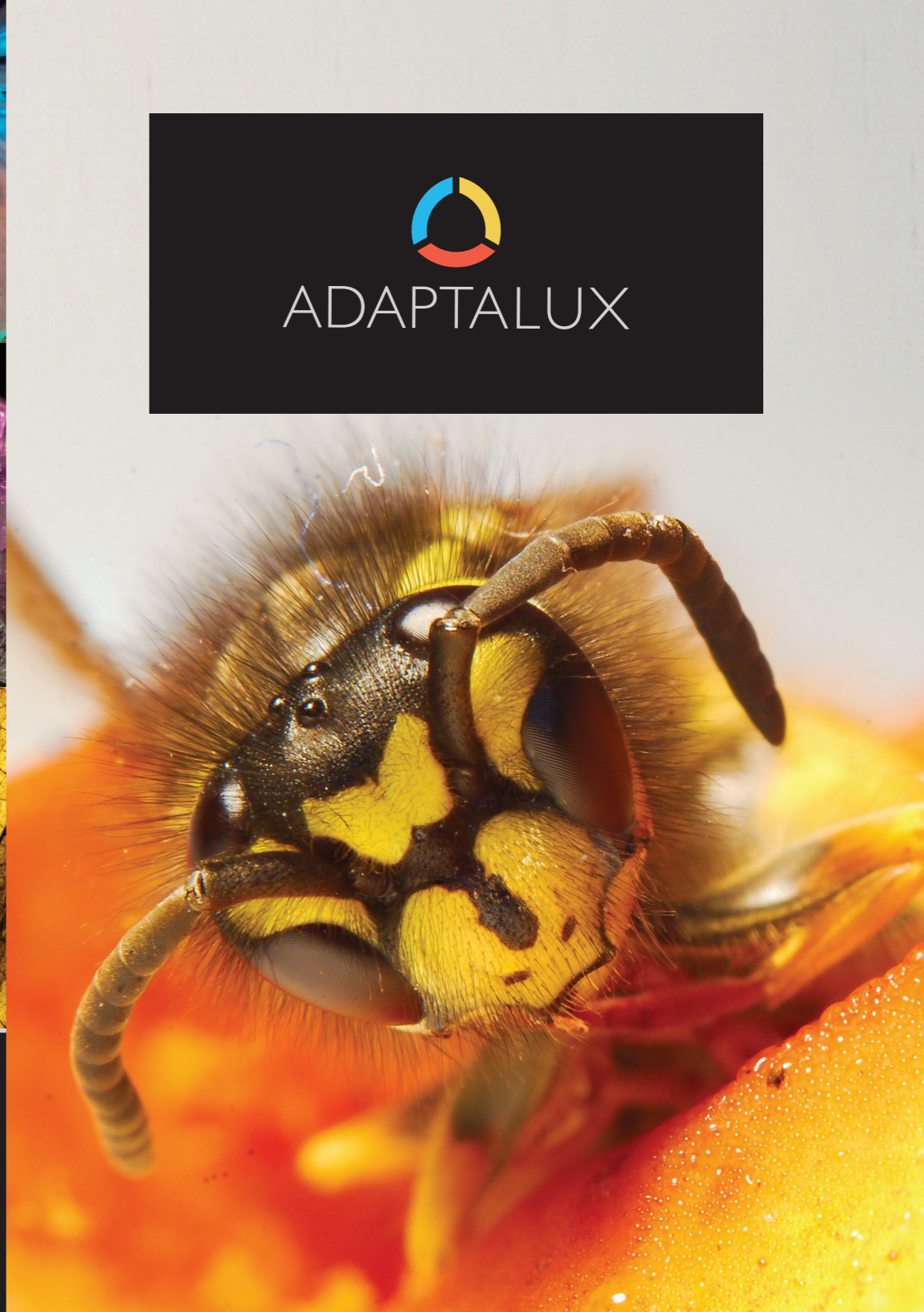
for regular macro photography tutorials, ideas and inspiration!

 @adaptalux #adaptalux

 facebook.com/adaptalux

 @adaptalux #adaptalux

 youtube.com/c/adaptalux





## CONTINUOUS LED

**See how every change affects your image.**

Use colour and white LED Lighting Arms to adapt your lighting to your subject. Flexible and versatile, you can control your light with masterful precision. Change the beam angle or add magnetic Diffusers and Colour Filters for even more options.



## XENON FLASH

**Freeze motion with high powered Flash Lighting Arms.**

The power of a strobe in a small form factor lets you get light into hard to reach places and freeze the motion of your subject. Shoot on camera or remotely using the IR Trigger. Add Coloured Gels and Diffusion Hoods for beautiful effects.



## ULTRAVIOLET

**See the unseen with our easy to use UV Lighting Arms.**

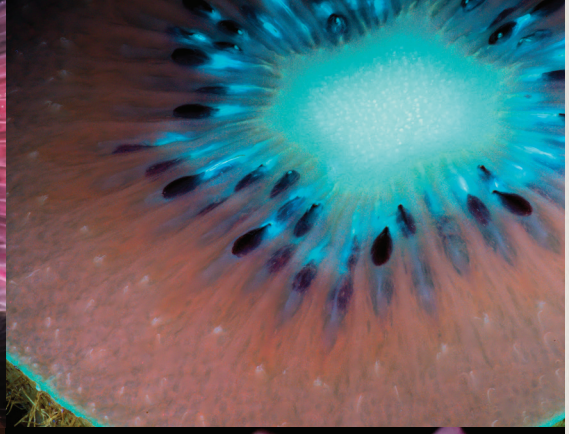
Reveal the unseen world of ultraviolet fluorescence with our pure 365nm UV Lighting Arms. Try this amazing technique without the need for camera modifications or extra equipment. All it takes is a dark room and a long exposure!





ADAPTALUX





Join the **Adaptalux Community**  
for regular macro photography tutorials, ideas and inspiration!



@adaptalux #adaptalux



facebook.com/adaptalux



@adaptalux #adaptalux



youtube.com/c/adaptalux



The Adaptalux Studio is a modular miniature lighting studio that allows for unrivalled lighting customisation.

Designed specifically for macro photography, it is the complete lighting system for creative close-up photography and videography.

Featuring a 12 hour built in battery and Bluetooth connection, you can take take light into the field and control each Lighting Arm remotely or manually.

90 CRI and high brightness lighting options give you excellent lighting quality for every situation. Add colour and diffusion with ease using our patented magnetic attachment system.



Learn more at

**[WWW.ADAPTALUX.COM](http://WWW.ADAPTALUX.COM)**



## CONTINUOUS LED

**See how every change affects your image.**

Use colour and white LED Lighting Arms to adapt your lighting to your subject. Flexible and versatile, you can control your light with masterful precision. Change the beam angle or add magnetic Diffusers and Colour Filters for even more options.





## XENON FLASH

**Freeze motion with high powered Flash Lighting Arms.**

The power of a strobe in a small form factor lets you get light into hard to reach places and freeze the motion of your subject.

Shoot on camera or remotely using the IR Trigger. Add Coloured Gels and Diffusion Hoods for beautiful effects.





## ULTRAVIOLET

**See the unseen with our easy to use UV Lighting Arms.**

Reveal the unseen world of ultraviolet fluorescence with our pure 365nm UV Lighting Arms. Try this amazing technique without the need for camera modifications or extra equipment. All it takes is a dark room and a long exposure!

