

First Marine And Engineering Services Ltd./Henan Petroleum Company Nigeria Ltd.



FMES/HPCN

FEBRAURY, 2024

FMES/HPCN LAND DRILLING RIGS: A PARTNERSHIP THAT WORKS!

1 PROFILE

2 EQUIPMENT

3 EXPERIENCE

4 HSE PERFORMANCE





Company Profile



- ◆ First Marine Engineering Service Limited is a 100% indigenous company incorporated by law since 1991, and has been in technical partnership for drilling services since 2005 with Henan Petroleum Company Nigeria Limited
- ◆ FMES has a Logistics Base with storage facilities large enough to accommodate rig/drilling operations. Our Logistics Base is a one-stop-shop providing shore-base logistic services, including accommodation, warehousing, material handling equipment, fabrication and assembly yard, crew change management, catering, open and closed storage facilities suitable to support Oil Exploration companies, offering a cost-effective solution for those with assets around the Bayelsa axis.
- ◆ We handle OCTGs and other offshore cargos.



Total Landed area of the base: 300,000Sqm
Office space: 750Sqm
Camp/Canteen Area: 500Sqm
Storage/Workshop Area: 10,000Sqm
Fabrication Area: 83,750Sqm
Jetty Capacity: 3,000 Tonnes
Ramp Capacity: 2,000 Tonnes



Total Landed area of the base: 300,000Sqm
Office space: 750Sqm
Camp/Canteen Area: 500Sqm
Storage/Workshop Area: 10,000Sqm
Fabrication Area: 83,750Sqm
Jetty Capacity: 3,000 Tonnes
Ramp Capacity: 2,000 Tonnes

- ◆ Henan Petroleum Company Nigeria Limited (HPCN), is incorporated in 2003 under the law of the Federal Republic of Nigeria.
- ◆ HPCN is fully invested and owned by its parent company HBOSC(HuaBei Oilfield Service Corporation), a subsidiary of SINOPEC.
- ◆ The combined Partnership owns 3 sets 2000HP Land Drilling Rigs and are providing drilling services with technically experienced and competent staff.

Between 1999 and 2020, the federal government earned \$741.48 billion from oil and gas sales, according to data from the Nigerian Extractive Industries Transparency Initiative (NEITI) but this hasn't translated into much value for over 100 million poor Nigerians, indicating that the current emphasis to ramp up drilling must be backed by spending reforms. Nigeria is richly endowed with oil, gas, and mineral resources. The government estimates that it has about 38 billion barrels of crude oil reserves, 160 trillion cubic meters of gas reserves.....

Isaac Anyaogu of **Businessday** -October 2, 2023

FMES/HPCN's partnership was formed in 2005. Since becoming partners the collaboration has effectively continued to performed her role in contributing to the global oil production levels.

As Nigeria's current Oil Production stands at between 1.3 – 1.7mbpd as against 2.5mbpd expected output, FMES/HPCN is investing in additional drilling rigs to serve the increasing demands from industry players looking to develop their assets and expand their potentials.

Our Rig129 has been rebuilt and hopes to commence drilling operations in Q2 2024.

With the call for more drilling rigs to increase production by the Federal Government, FMES/HPCN is positioned to add more Rigs to her in-country rig count.

Since 2005, FMES/HPCN with the local partners have provided Drilling services for SPDC, AGIP, ADDAX, OANDO, ENAGEED, ENERGIA, SEPLAT, PLARFORM, DUBRI, NPDC, PILLAR OIL, ARADEL and other operators.

From 2005 to 2023, over 130 wells have been completed with a combine total footage of about 2.45 million feet.

ANCILLARY SUPPORT EQUIPMENT SPREAD

Lifting Crane: 1 Duty 1 Standby

Forklift: 1 Duty 1 Standby

Purpose is to reduce NPT as low as reasonably possible

RIG EQUIPMENT SPARE BASE

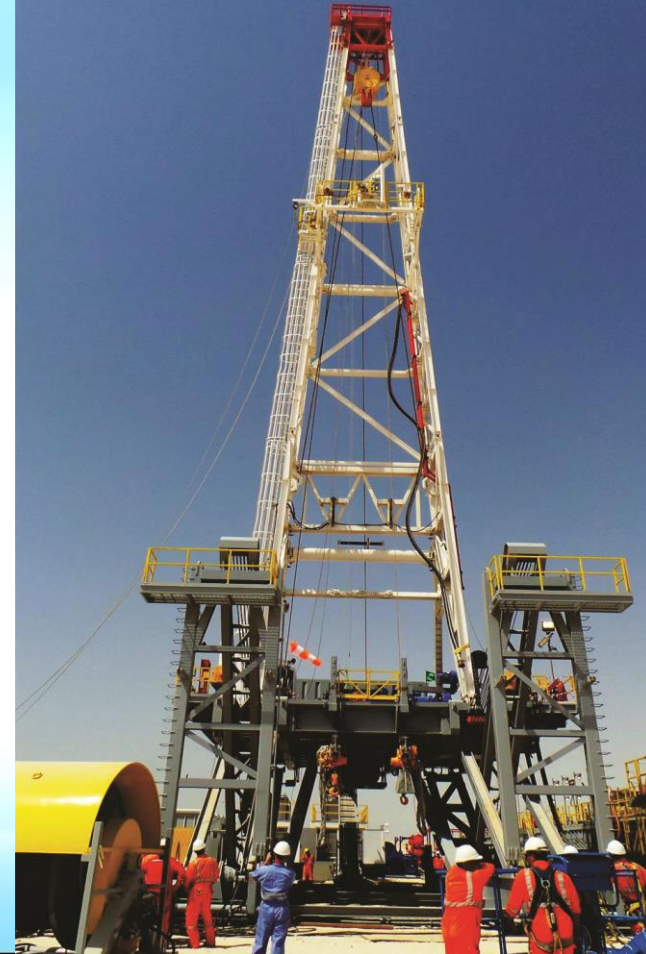
FMES-HPCN boasts of over USD18m in spares including availability of Spare a TDS, Draw Works spares, complete Mud Pumps Spares and a host of others.

RIG EQUIPMENT SPARE BASE

FMES-HPCN boasts of over USD18m in spares including availability of Spare a TDS, Draw Works spares, complete Mud Pumps Spares and a host of others.

OUR TEAM

We have a combined team of experienced and dedicated industry professionals.....



First Marine & Eng. Serv. Ltd
CHIEF J. T. PENAWOU

Henan Petroleum Company Manager Director (CHI)
ZENG DEWEI

Finance Manager
Luqman Muritala

Director of Operations
Joseph Uwuigbe

Finance Manager
Fan Shuju(CH)
Gerald Onianwah (NIG)

Legal/Comp. Secretary
Monica Nweke

Human Res. Manager
Caroline Azimoh

Regional Contract Manager Chang
Xian Shuai

Operations Manager/ Com Relations (Nig)
Ogbajie Abel

Catering Manager
Ahmed Yakubu

Asset Manager
Qu Yadong(CH)
Tunde Ibrahim/Nwanpka A.(Nig)

Bus. Dev. Mgr.
Shola Adetayo

Toolpushers
Gbadebo Femi (NIG)

QHSE Manager
Ebikabowei Yeigagha

Drillers(NIG)
Nwankpa Ndubuisi(NIG)

Chief Mechanic
David Nwaanyawu(Nig)

SCR/Electrician
Fan Feng(CH)
Ju Wenghao

Drillers -Ogbolu
Richard,Ayoba Samuel (Nig)

Comm. Rel. Manager
Francisca Agidee

Assistant Drillers(NIG)
Victor Iloma,Robinson Odach,Clememt Oko

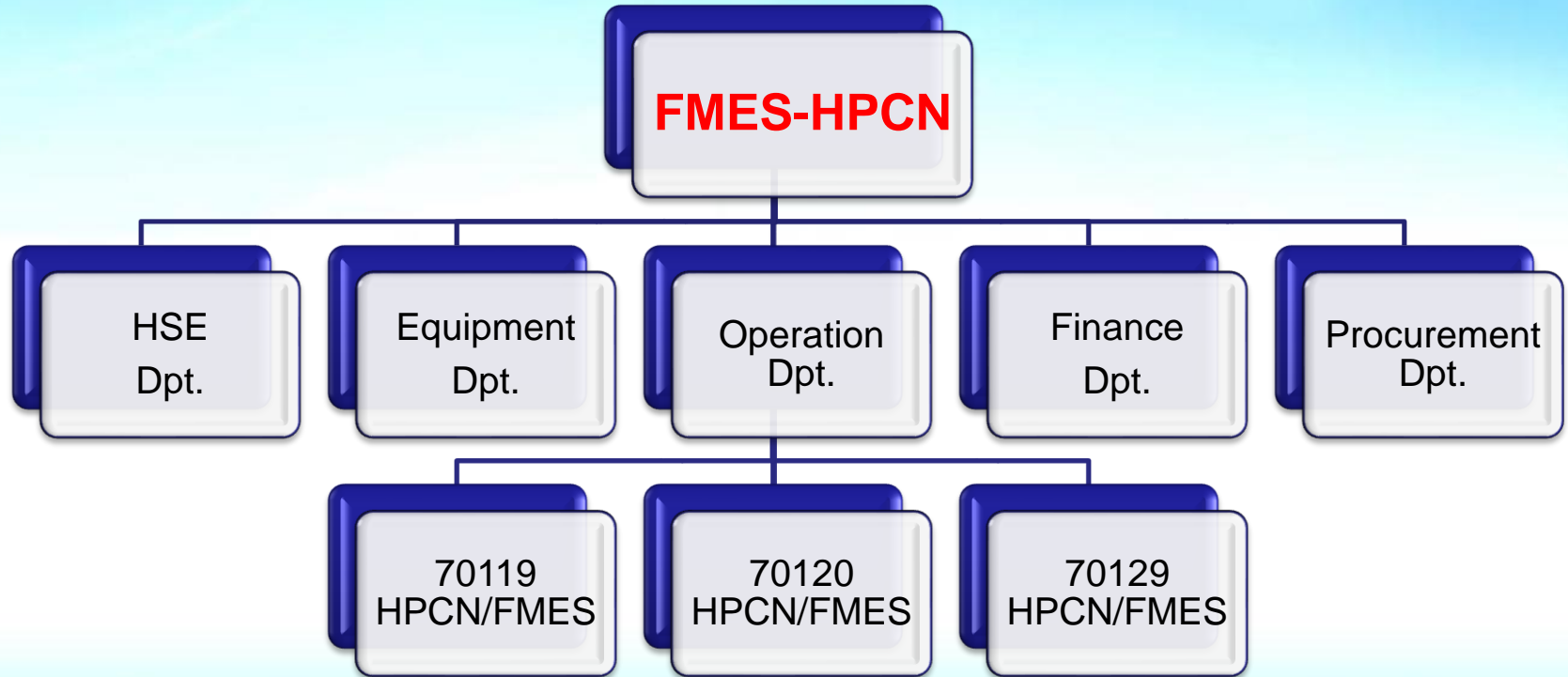
Mechanic(NIG)
Kingsley Erhuen and Syvester Odum,

Electrician(NIG)
Bayde Tayo, Chinonso E. Sunday Kalu

Assistant Drillers(NIG)
Ayoba Samuel,Nzika Atakpa,Boma Zua Ekiyo

Field Operations Manager
Stanley Momoh

Organization Chart



2000HP Land Drilling Rig : HPEB 119, 120 & 129,



HPEB-119



HPEB-120



HPEB-129

Main Specifications for Drilling Rigs

Rig Name		70119	70120	70129
Drilling Depth (ft) with 5"DP		20,000	20,000	20,000
Max. Hook Load (lbs)		1,000,000	1,000,000	1,000,000
Drawworks Rating (HP)		2,000	2,000	2,000
MAST	Type	LS-National Oilwell JJ450/45-K11	BOMCO JJ450/45-K14	BOMCO JJ450/45-K5
	Height (ft)	150	149	150
	Hook Load (lbs)	1,000,000	1,000,000	1,000,000
Rotary Table (in)		37 1/2	37 1/2	37 1/2
Substructure Height (ft)		36	36	31
Mud Pump (HP)		3*1,600	3*1,600	3*1,600
TDS System (lbs)		1,000,000	1,000,000	1,000,000
Power supply (No.)		CAT3512B*4	CAT3512B*4	CAT3512B*4
BOP(psi)		15,000	10,000	10,000

SUMMARY OF WELL DELIVERY

	TOTAL WELLS	HORIZONTAL	VERTICAL	INCLINATION
SPDC	38	16	0	22
NAOC	29	11	0	18
ADDAX	19	9	0	10
MARGINAL FIELDS	53	12	2	39
TOTAL WELL DELIVERED	139	48	2	89
TOTAL FOOTAGE DRILLED	1,432,989ft			

Since 2005, HPCN has provided Drilling services for SPDC, AGIP, ENAGEED, PILLAR OIL, ARADEL and other major operators.

No.	Client	Scope of Work	Rig name	Duration
1	SPDC	Drilling/Workover	HPEB 119	June 2005 – August 2007
2	SPDC	Drilling/Workover	HPEB 129	January 2007- July 2014
3	UERL/SIPEC	Drilling	HPEB 120	Feb. 2008 – June 2009
4	NAOC	Drilling/Workover	HPEB 119	May 2009 – June 2014
5	NAOC	Drilling/Workover	HPEB 120	February 2010 - May 2014
6	NAOC	Drilling/Workover	HPEB 120	May 2018 - December 2019
7	EBAGEED	Drilling/Workover	HPEB 120	Jan 2020 - Jan 2021
6	PILLAR OIL	Drilling	HPEB 120	April 2021- July 2021
6	ARADEL	Drilling	HPEB 120	Nov 2022 - Date

WELL DELIVERY SPDC

Company	Rig Name	Well Name	Location	Depth(ft)	Type of Well	Spud Date	Completion Date
SPDC	HPEB129	AGBADA OWES-4	AGBADA	10452.00	HORIZONTAL	20070127	20070322
SPDC	HPEB129	OBEAKPU 7	OBEAKPU	10406.00	INCLINATION	20070423	20070618
SPDC	HPEB129	AFAM-20(work over)	AFAM	—	INCLINATION	20070724	20070822
SPDC	HPEB129	AFAM WGQY-02	AFAM	9412.73	INCLINATION	20070829	20071003
SPDC	HPEB129	ETELEBU-8ST(work over)	AFAM	—	INCLINATION	20071022	20071212
SPDC	HPEB129	UTOROGU IAVI-1	UTOROGU	10826.77	INCLINATION	20080306	20080413
SPDC	HPEB129	OBEN 34	OBEM	7541.99	INCLINATION	20080619	20080722
SPDC	HPEB129	UGHELLI-LMBI-2	UGHELLI	10713.00	INCLINATION	2008111	20081226
SPDC	HPEB129	UTOROGU 14	OML 34	13739.99	HORIZONTAL	20090102	20090301
SPDC	HPEB129	UTOROGU IAVI-2	UTOROGU	13677.00	INCLINATION	20090313	20090526

Company	Rig Name	Well Name	Location	Depth(ft)	Type of Well	Spud Date	Completion Date
SPDC	HPEB129	GBARAN 14	GBARAN	14685	HORIZONTAL	20090706	20090917
SPDC	HPEB129	GBARAN 15	GBARAN	15597	HORIZONTAL	20091025	20100213
SPDC	HPEB129	GBARAN 16	GBARAN	13700	HORIZONTAL	20100404	0100822
SPDC	HPEB129	AFAM-24	AFAM	9513	INCLINATION	20101011	20101102
SPDC	HPEB129	AGBADA PISV 3	AGBADA	12661	HORIZONTAL	20110716	20111010
SPDC	HPEB129	AGABADA 70	AGBADA	9721	INCLINATION	20111016	20111123
SPDC	HPEB129	UGHELLI-31	UGHELLI	11056	INCLINATION	20111218	20111226
SPDC	HPEB129	UGHELLI-32	UGHELLI	11040	INCLINATION	20111230	20120110
SPDC	HPEB129	ZARAMA-12	ZARAMA	11155	INCLINATION	20120204	20120315
SPDC	HPEB129	ZARAMA-13	ZARAMA	11155	INCLINATION	20120319	20120710



Experience



Company	Rig Name	Well Name	Location	Depth(ft)	Type of Well	Spud Date	Completion Date
SPDC	HPEB129	ETELEBOU-12	ETELEBOU	10423	HORIZONTAL	20120803	20120918
SPDC	HPEB129	ETELEBOU-13	ETELEBOU	10600	HORIZONTAL	20120921	20121116
SPDC	HPEB129	ETELEBOU VSUI-1	ETELEBOU	10252	INCLINATION	20121121	20130108
SPDC	HPEB129	GBARAN VZTX-2	GBARAN	10252	INCLINATION	20130130	20130321
SPDC	HPEB129	GBARAN VZTX-1	GBARAN	10252	INCLINATION	20130326	20130530
SPDC	HPEB129	KOLO CREEK-41	KOLO	9602	INCLINATION	20130628	20130730
SPDC	HPEB129	KOROAMA-7	KOROAMA	9875	INCLINATION	20131007	20131025
SPDC	HPEB129	KOROAMA-3	KOROAMA	10499	INCLINATION	20131106	20131117
SPDC	HPEB129	OKPOKONOU 5	OKPOKONOU	16368	HORIZONTAL	20140101	20140416
SPDC	HPEB129	OKPOKONOU-6X	OKPOKONOU	16112	INCLINATION	20140422	20140620



Experience



Company	Rig Name	Well Name	Location	Depth(ft)	Type of Well	Spud Date	Completion Date
TOTAL NUMBER OF WELLS DRILLED FOR SPDC = 38					VERTICALS		0
					HORIZONTAL		16
					INCLINATION		22

NAOC

Company	Rig Name	Well Name	Location	Depth(ft)	Type of Well	Spud Date	Completion Date
NAOC	RIG 119	OBIAFU SW DEEP B (OBIAFU-39)	OBIAFU	15,112	HORIZONTAL	2009.05.09	2009.05.31
NAOC	RIG 119	ALINSO B	ALINSO	13,694	INCLINATION	2009.10.22	2010.01. 01
NAOC	RIG 119	OBIAFU 36	OBIAFU	14,239	HORIZONTAL	2010.02.19	2010.04.29
NAOC	RIG 119	OBIAFU AK	MGBEDE	14,325	HORIZONTAL	2010.04. 28	2010.06.28
NAOC	RIG 119	ASHAKA C	ASHAKA	10,798	HORIZONTAL	2010.07.30	2010.10.31
NAOC	RIG 119	EGBOGORO 2	EGBEGORO	N/A	HORIZONTAL	2011.01.01	2011.03.13
NAOC	RIG 119	EGBOGORO 13	EGBEGORO	11,942	INCLINATION	2011.04.14	2011.07.26
NAOC	RIG 119	ASHAKA D	ASHAKA	12,076	INCLINATION	2011.08.23	2011.12.02
NAOC	RIG 119	ADOFI A	ADOFI RV	11,844	HORIZONTAL	2011.12.29	2012.06.04
NAOC	RIG 119	Mbede 28	Mbede	10,384	INCLINATION	2012.07.15	2012.12.17

NAOC

Company	Rig Name	Well Name	Location	Depth(ft)	Type of Well	Spud Date	Completion Date
NAOC	RIG 120	OLEH A	OLEH	15,617	INCLINATION	2010.02.17	2010.07.16
NAOC	RIG 120	TUOMO-4DIR	OLEH	14,846	INCLINATION	2010.08.23	2010. 12.29
NAOC	RIG 120	OSHI-0	OSHI	12,730	INCLINATION	2011.02.21	2011.05.25
NAOC	RIG 120	OLEH 2 DR	OLEH	12,894	HORIZONTAL	2011.07.20	2011.10.12
NAOC	RIG 120	OLEH 3	OLEH	12,894	HORIZONTAL	2011.10.30	2012. 02.09
NAOC	RIG 120	ALINSO C	ALINSO	13,776	HORIZONTAL	2012.03.20	2012.06.11
NAOC	RIG 120	EBOCHA 23	EBOCHA	11,493	INCLINATION	2012.07.13	2012.09.26
NAOC	RIG 120	EGBEGORO 13	EGBEGORO	N/A	INCLINATION	2012.12.06	2013.01.13
NAOC	RIG 120	Ashaka-E	ASHAKA	13563	INCLINATION	2013.03.24	2013.07.30
NAOC	RIG 120	OLEH 3(Work over)	OLEH	15141	HORIZONTAL	2013.08.12	2013.11.10



Experience



NAOC

Company	Rig Name	Well Name	Location	Depth(ft)	Type of Well	Spud Date	Completion Date
NAOC	120	EBOCHA 23(Work over)	EBOCHA	—	INCLINATION	2013.12.02	2014.02.28
NAOC	120	EBOCHA 11(Side trak)	EBOCHA	8,792	HORIZONTAL	2014.03.06	2014.06.09
NAOC	120	OLEH D	OLEH	15,259	INCLINATION	2018.07.14	2018. 12.02
NAOC	120	OLEH E	OLEH	15119	INCLINATION	2018.12.14	2019.05. 02
TOTAL NUMBER OF WELLS DRILLED FOR NAOC = 29				HORIZONTAL	11		
				VERTICAL	0		
				INCLINATION	18		

RIGS HSE performance for the last 5 years

Elements	2019	2020	2021	2022	2023
Fatality	0	0	0	0	0
Lost Time Injury - LTI	0	0	0	0	0
Lost Time Injury Frequency-LTIF	0.00	0.00	0.00	0.00	0.00
Road Traffic Accident (RTA)	0	1	0	0	0
Fire Incident	0	0	0	0	0
Near Miss Incident Report	0	1	1	0	1
Lost Work day Case (LWC)	0	0	0	0	0
Medical Treatment Case (MTC)	0	1	0	0	0
Restricted Work Case (RWC)	0	0	0	0	0
Total Recordable Case –TRC	0	0	0	0	0
Total Recordable Case Freq.-TRCF	0	0.00	0.00	0.00	0.00
First Aid Case	1	3	0	2	1
Total Manhour	232,222	811,282	469,406	215,750	626,877



HSE Award for Good HSE Performance by SPDC

SUMMARILY

The big question is; **Why Hire FMES/ HPCN Rigs?**

The statutory industry Rig spares requirements is about \$1.5m, but FMES/HPCN minimum spares is currently worth over \$18M. And we would like to re-emphasize that we have spares of TDS, DRAWWORKS, SCR, AND CAT GENERATORS, MUD PUMPS and many others.

We look forward to be of services to you soonest.

Thank You

