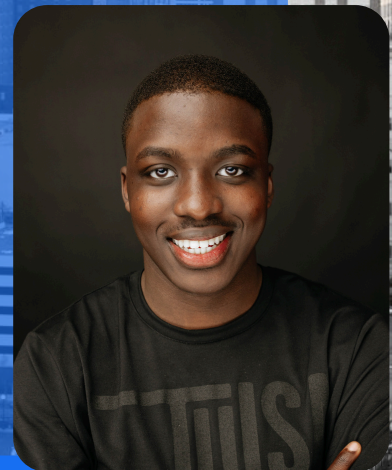




Empower Your *People*,  
Elevate Your *Organization*



## THE NEW U APPROACH TO EMPLOYEE DEVELOPMENT

[www.newuunlimited.com](http://www.newuunlimited.com)  
[hello@newutulsa.com](mailto:hello@newutulsa.com)  
[@newuunlimited](https://www.instagram.com/newuunlimited)





"I took the jump and pivoted career fields. Now, I proudly serve on my team, and I truly believe that I have found my purpose in life thanks to New U."

**Jenifer F.**



"I felt so uncertain about my future. New U redefined the pillars of my life, and I'm actively pursuing the goals I set for myself - both personally and professionally."

**Allie S.**



"I was unaware that I stopped pursuing my passions and dreams. New U challenged me to move beyond the comfort into my true potential."

**Timothy M.**



"Before, I didn't have a clear idea about my future. Through New U, I've found a community who inspires me and pushes me forward into my potential."

**Rodolfo S.**



"I was feeling like I was in a job just trying to survive. New U guided me through their process, and now I'm transitioning into a leadership role. I'm proud of where I am now."

**Taleya M.**



# Do you yearn for a thriving, engaged workforce?

Traditional training programs often fall short, leaving employees feeling disengaged and stagnant. Even passionate team members may struggle to reach their full potential.

## Here's the reality.



## New U offers a transformative human-centric solution.

We go beyond surface-level fixes to cultivate a culture of passion and motivation. Through a deep dive into your organization's DNA, we uncover hidden potential and develop a tailored program specifically for you.

## Our Approach

We deliver a **human-centric structured program** of up to six live, in-person sessions led by experienced facilitators. These interactive workshops foster **meaningful connections** and break down communication silos, unleashing the collective genius of your workforce.



# The Program Stages



## Stage 1: Projection (Vision Casting)

Envision your ideal future and develop a roadmap to get there.



## Stage 2: Introspection & Reflection

Gain a deeper understanding of your thoughts, emotions, values, and motivations.



## Stage 3: Talent Development

Focus on developing your talents and building strong habits for personal and professional growth.



## Stage 4: Application (Life Mapping)

Create a personalized life map outlining actionable steps to achieve your goals over the next 6 months to 3 years.

## Who Benefits from New U?



1

### HIGH PERFORMERS

Refine your skills, reach even greater heights, and become true leaders.



2

### PERFORMANCE IMPROVEMENT

Identify areas for development and bridge the gap to the next level.



3

### DISENGAGED EMPLOYEES

Reignite your passion and contribute in a more meaningful way.



4

### LEADERSHIP ASPIRANTS

Develop critical leadership skills and prepare for a smooth transition into your promotion.





# Outcomes



## Improved Employee Performance & Productivity

Empowered and engaged employees lead to increased productivity and a stronger bottom line.



## Enhanced Communication & Collaboration

Break down communication silos and foster a collaborative environment that sparks innovation.



## Stronger Organizational Culture

Cultivate a values-driven culture with high employee retention.



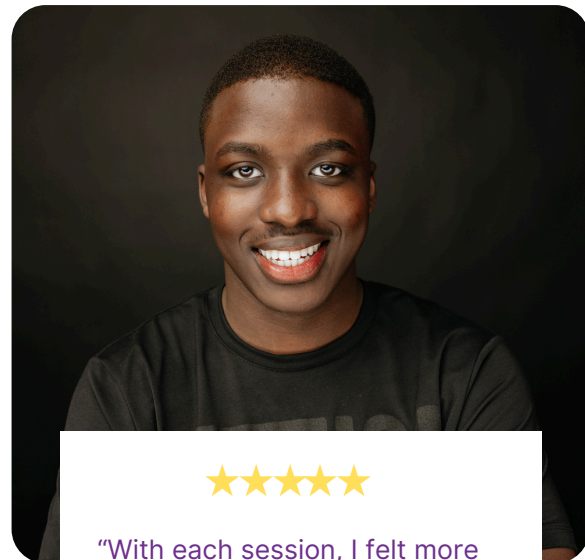
## Clear Accountability and Ownership:

Empower individuals to take ownership of their roles and responsibilities, leading to improved results.



"I now have wins in my toolbox to set boundaries and know that my actions created results to celebrate."

**Mimi Martinez-Herrera**  
Cohort 3



"With each session, I felt more alive. I've embraced my true potential."

**Timothy Mwesigwa**  
Cohort 15





**Visit our website:** Explore our program offerings and learn more about the New U approach.



**Schedule a free consultation:** Connect with a New U representative to discuss your specific needs and develop a customized program for your organization.



**Follow us on social media:** Curated content on Instagram, Facebook, and LinkedIn



**Email Us:** Have any questions? Email us for any questions and inquiries.

Invest in your *People*,  
Watch your *Organization Transform*.

[www.newuunlimited.com](http://www.newuunlimited.com)  
[hello@newutulsa.com](mailto:hello@newutulsa.com)  
[@newuunlimited](https://www.instagram.com/newuunlimited)

