



P R E C A S T C O N C R E T E

PRE-STRESSED WALL PANELS



Pre-stressed wall panels are a simple and cost effective way to create load bearing or non load bearing walls in agricultural, commercial or industrial environments. With pre-stressed steel strands running the length of the panels, it maximizes their load capacity compared to standard reinforced and in-situ concrete walls.

Our wall panels can be designed to suit your exact needs by our in-house design team. They can be used horizontally or vertically depending on design requirements. The standard sizes available are: 1000 mm, 1200 mm and 1500 mm. The standard thicknesses of wall panels are 95 mm, 150 mm and 180 mm.



O'REILLY CONCRETE
Larchfield
Kingscourt, Co. Cavan
Ireland
sales@oreillyconcrete.com
www.oreillyconcrete.co.uk

Contact in UK:
Maurice Rowntree 074 68429409
Head Office in Ireland
T: +353 (0) 42 966 7237
F: +353 (0) 42 966 7311



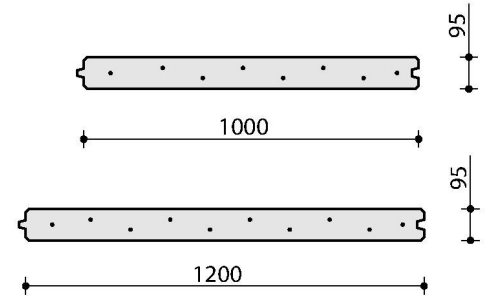
P R E C A S T C O N C R E T E

PRE-STRESSED WALL PANELS

95 mm WALL PANEL

The most economical all-purpose cladding panel.

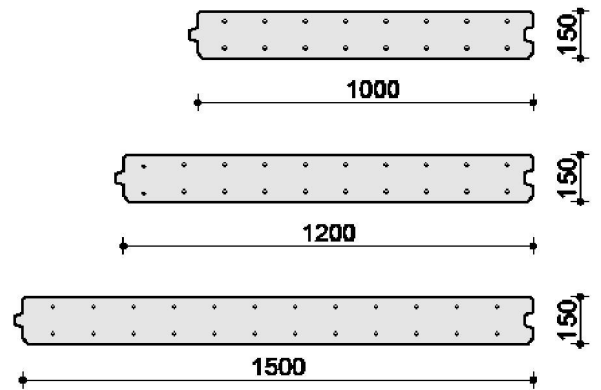
95 mm pre-stressed wall panel is the most economical solution for agriculture, commercial and industrial buildings, where no material is stored against the wall. The panel is lightweight, manageable and easy to fit providing fast and low cost solution.



150 mm WALL PANEL

The most economical solution for grain stores.

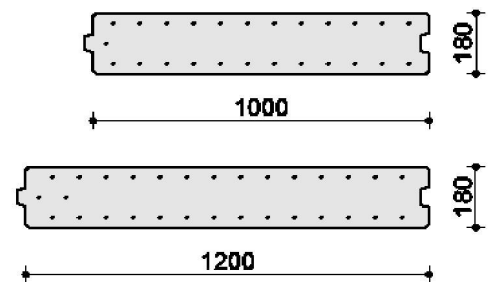
150 mm pre-stressed wall panel is the most economical solution for industrial and agriculture buildings, where external or internal walls have to retain stored material. The panel is designed to withstand pressure of stored material, providing fast and low cost solution, ideal for grain, fertilizer, compost or waste store sheds.



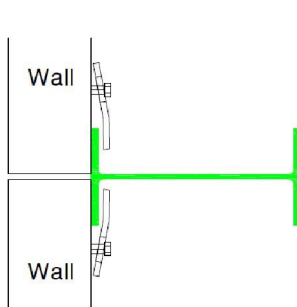
180 mm WALL PANEL

The strongest and economical solution for retaining wall.

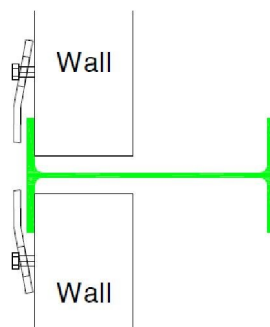
180 mm pre-stressed wall panel is the strongest panel, designed especially for high grain stores and retaining walls. 180 mm panel is the best option for retaining high density materials like soil, stone or slurry. Also 180 mm panels can be used as cantilevered vertical walls in slurry tanks.



Typical connection details.



Wall Fitted to
Outside of Steel
Column.



Wall Fitted to
inside of Steel
Column.

