

PLUG & COOL SYSTEM **81-1010**

Complete 3.6m unit. Unique vector-flow technology allows hot air to leave grain faster. Twin wall food grade durable polymer construction. 450mm dia x 1.2m base, 450mm to 150mm adaptor and 150mm dia x 2m top tube.



STEEL SYSTEM **81-1011**

Complete 3.9m unit. Rape proof louvred base. 250mm dia x 1m base, 250mm to 150mm adaptor, 150mm dia x 2.75m top tube and 400mm square foot plate. Fully galvanised.



1.1KW SINGLE PHASE FAN **81-1015**

Energy-efficient aluminium grain cooling fans. 5-year manufacturer's warranty. Perfect for steel or plastic 150mm grain columns.



TEMPERATURE PROBE **81-1016**

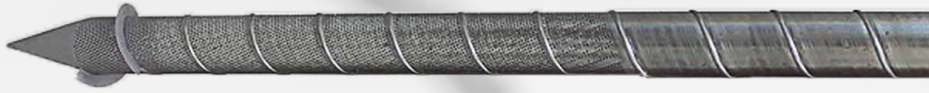
3m probe with easy read digital display.



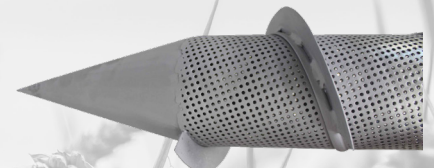
Follow us on social media @pananglia



AIR SPEAR GRAIN **81-1001**



AIR SPEAR OSR **81-1002**



250 CFM FAN **81-1003** 400 CFM FAN **81-1004**



- 1** Available from stock.
- 2** Adjustable handle for ease of operation.
- 3** Perforated mesh.
- 4** Sharp steel point for ease of insertion.
- 5** 5 year manufacturer's warranty on the fans.

*All spears complete with handle

Follow us on social media @pananglia

