

## **MECHANICAL HEDGE TRIMMING & MECHANICAL WEED CONTROL**



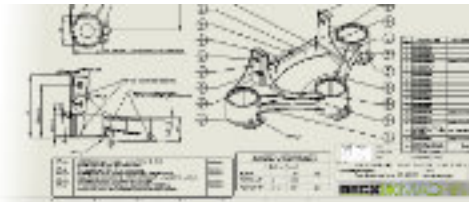
**EFFICIENT - RELIABLE - DURABLE**

## IDEA

All good products are based on good ideas. Becx Machines does its utmost to effectively convert such ideas into functional and durable machines. At the Becx engineering department, ideas first become drawings; drawings then become prototypes; and prototypes become products after further development. These are EFFECTIVE products that Becx wholeheartedly believes in!

## PRODUCTION

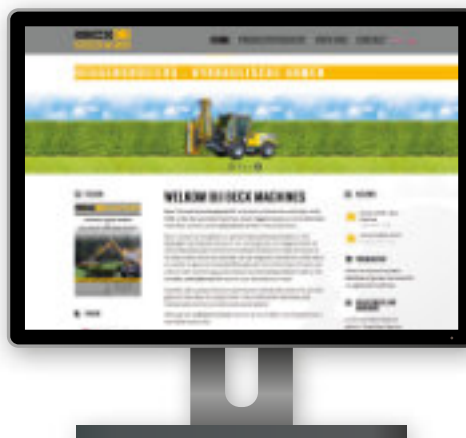
Because Becx believes in short lines of communication and the ability to respond quickly, Becx prefers to keep production and product development activities in-house or very close to the company. Due to short distances and short lines of communication, changes can be quickly implemented, produced items can be inspected efficiently and consistent quality and timely delivery can be guaranteed.



## INFORMATION

Information is an essential factor in today's world. And Becx understands the importance of providing good information. This brochure features basic details about all Becx Machines. Besides this brochure, you can also visit [becxmachines.com](http://becxmachines.com). This website features extensive information for each machine, as well as photos and videos. You can also request demonstrations.

 [becxmachines.com](http://becxmachines.com)



# Contents

## HEDGE TRIMMERS

HS75HR



p. 4-5

HS75ER



p. 6-7

HS130HR



p. 8-9

HS131HR



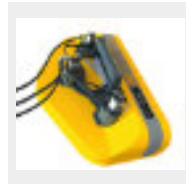
p. 10-11

HS131C



p. 12-13

HS150HR



p. 14-15

HS210HR



p. 16-17

HS240HR



p. 18-19

WS300HR



p. 20-21

## HYDRAULIC ARMS / ROTATORS

WLA60



p. 22-23

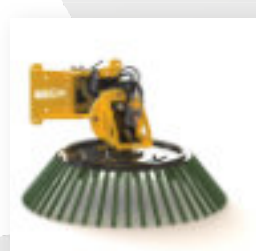
DRHS55



p. 24-25

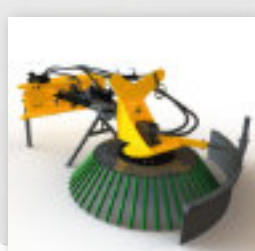
## WEED BRUSHES / GRASS TRIMMERS

OB90M



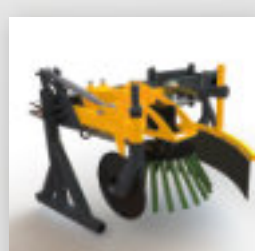
p. 26-27

OB90



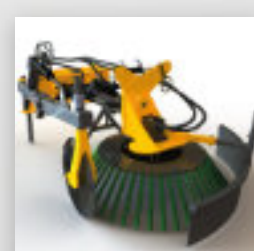
p. 28-29

OBKS50-35



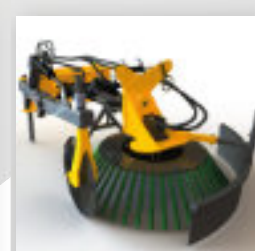
p. 30-31

OBKS50-45



p. 32-33

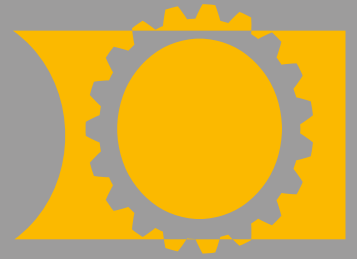
OBKS90-45



p. 34-35



# HS75HR



## A SINGLE PROCESS

The Becx HS75HR is the smallest machine in the hedge trimmer range from Becx Machines. This hedge trimmer has only two trimmer heads and is an entirely new design. Due to its limited dimensions and small components, it weighs very little and requires only a small amount of oil. The HS75HR is therefore compatible with even the smallest of tractors. Of course this trimmer also has all the features of our previous hedge trimmer models.

## SAFE AND RELIABLE

Becx Machines raises the level of safety further with the HS75HR. The principal aim is a lightweight hedge trimmer, so the hood and the frame had to be made lighter. To ensure extra safety, the safety components on the hood are made from high performance steel, which is up to 4 times more damage-resistant than regular steel. This is a better way of safeguarding safety.

## CAPACITY

Becx hedge trimmers are able to significantly reduce the size of hedges in a single work process, without making concessions in results. Noise levels are very low because the machine only uses hydro-motors and features no chains or V-belts. NO concessions were made with the two trimmer heads of the HS75HR either.

PATENTED



# HEDGE TRIMMER

## HS75HR

- Very safe thanks to a closed casing made of high-strength steel
- Reliable and cost-saving
- Good trimming results
- Low weight and low noise levels
- Compatible with almost all mowing arms

## SPECIFICATIONS

Working width:	77 cm
Trimming capacity:	up to 2.0 cm
Weight:	73 kg
Fixing sleeve:	80 x 80 mm
Maximum revolutions:	3000 rpm
Required connections:	Pressure - Return - Drain lines (pressure-free)
Required oil supply:	circa 24 l/min (featuring 8cc motor as standard)
Min. - Max. oil pressure:	180 - 210 bar

The standard HS75HR will be supplied with 110 cm hoses featuring agricultural couplings.

## OPTIONS

- Flow regulator for adjusting volume flow

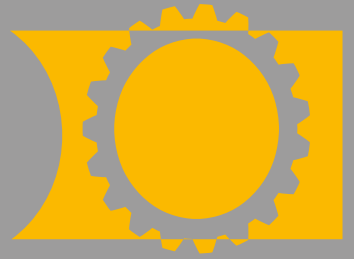


See the HS75HR in action at [www.becxmachines.com](http://www.becxmachines.com)





# HS75ER



## ELECTRIC WITHOUT CONCESSIONS

The Becx HS75ER is the latest machine in the hedge trimmer range from Becx Machines. This hedge trimmer is a refined version of the existing HS75HR trimmer. Because hydraulic motors have been replaced by 48-Volt electric motors, it is now possible to trim hedges without releasing emissions. This electric trimmer possesses all the same qualities as our regular hedge trimmers.

## SAFE AND FAMILIAR

The HS75ER has been produced using the same high-quality materials and components and, besides using electric motors, is identical to the HS75HR machines. This means it is possible to convert existing hydraulic HS75HR machines into electric machines or vice versa.

## CAPACITY

Thanks to its two-watt electric motors, the HS75ER has the same capacity as the hydraulic version.

PATENTED



# HEDGE TRIMMER

## HS75ER

- Very safe thanks to a closed casing made of high-strength steel
- Reliable and cost-saving
- Good trimming results
- Low weight and low noise levels
- Compatible with almost all mowing arms

## SPECIFICATIONS

Working width:	77 cm
Trimming capacity:	up to 2.0 cm
Weight:	77 kg
Fixing sleeve:	80 x 80 mm
Maximum revolutions:	3000 rpm
Required connections:	48 Volt

## OPTIONS

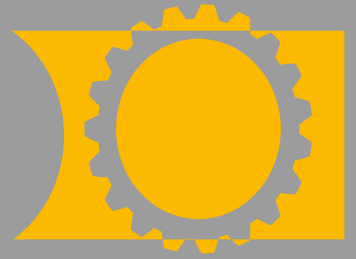


See the HS75ER in action at [www.becxmachines.com](http://www.becxmachines.com)





# HS130HR



## A SINGLE PROCESS

The Becx HS130HR hedge trimmer is specially developed for professional hedge trimming in a single work process. The material is trimmed, cut into fine pieces by the patented double blade (inside the sealed casing) and inserted back into the hedge. This helps to minimize the clean-up and disposal of hedge trimmings. Becx's patented cutting system ensures the very highest trimming quality.

## SAFE AND RELIABLE

Thanks to its sealed casing, the HS130HR is deemed to be extremely safe. The casing helps to prevent trimmings from scattering. Downtime is kept to a minimum thanks to the use of high quality materials, effective construction and direct transmission based on strong hydro-motors. The machine is also very easy and cheap to maintain.

## CAPACITY

Becx hedge trimmers are able to significantly reduce the size of hedges in a single work process, without making concessions in results. Noise levels are very low because the machine only uses hydro-motors and features no chains or V-belts.

**PATENTED**





# HEDGE TRIMMER

## HS130HR

- Safe thanks to sealed casing
- Reliable
- Cost-effective
- Perfect trimming results
- Large capacity
- Low noise levels
- Compatible with almost all mowing arms

## SPECIFICATIONS

Working width:	127 cm
Trimming capacity:	up to 2.5 cm
Weight:	134 kg
Fixing sleeve:	80 x 80 mm
Maximum revolutions:	2500 rpm
Required connections:	Pressure - Return - Drain lines (pressure-free)
Required oil supply:	circa 30 l/min (featuring 11cc motor as standard)
Min. - Max. oil pressure:	180 - 210 bar

A standard HS130HR will be supplied with 110 cm hoses featuring agricultural couplings.

## OPTIONS

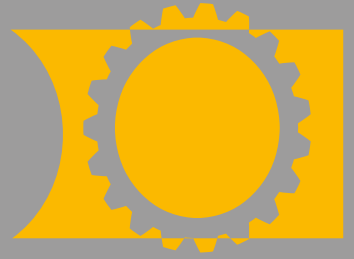
- 16cc motor (circa 45 l/min required)
- Flow regulator for adjusting volume flow



See the HS130HR in action at [www.becxmachines.com](http://www.becxmachines.com)



# HS131HR



## DEVELOPMENT

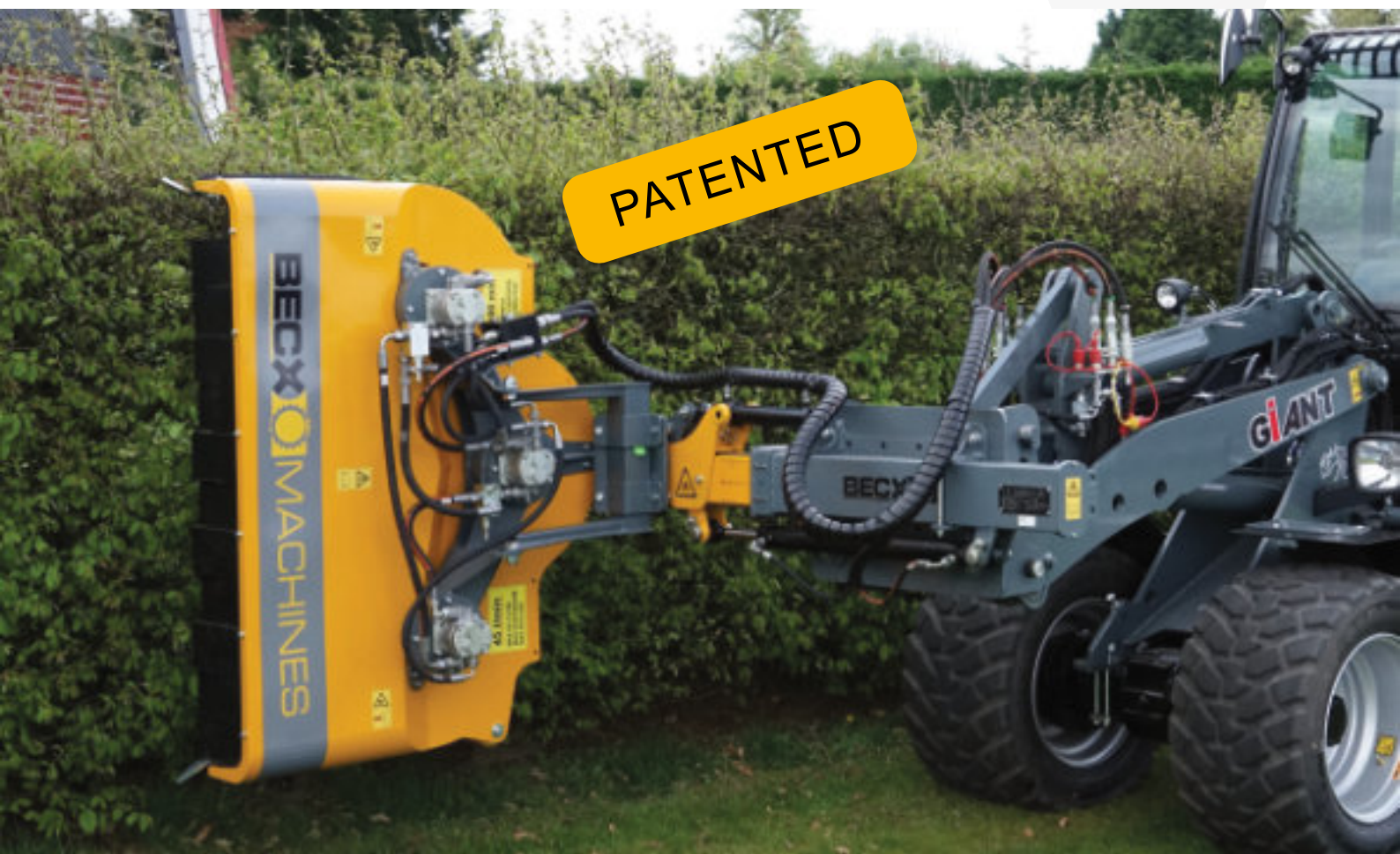
By listening to customers and people's experiences with the HS130HR and HS150HR, we have taken hedge trimming a level higher with this machine. The machine's capacity is slightly higher than the HS130HR. The machine is even better at mulching, discards even less trimmed material and has a more robust casing.

## FUNCTIONAL

The HS131HR features a guide roller by default. This standard vertical roller makes vertical hedge trimming easier and reduces wear and tear/damage to the hood.

## SAFE AND FAMILIAR

Basically, the HS131HR is a reliable hedge trimmer similar to the HS130HR. The reliable hydro-motors and bearing houses are also used in the new machine. A number of new properties have been added to these familiar basic elements. For instance, the standard HS131HR features some hydraulic safety elements and blade heads are even easier to maintain.



# HEDGE TRIMMER

## HS131HR

- Very safe thanks to a sealed casing
- Reliable
- Cost-effective
- Perfect trimming results
- Large capacity
- Low noise levels
- Compatible with almost all mowing arms

## SPECIFICATIONS

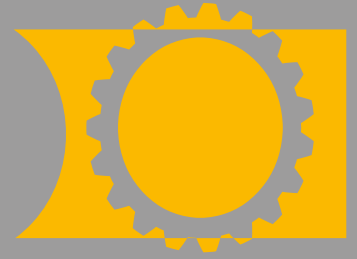
Type:	HS131HR
Working width:	131 cm
Trimming capacity:	up to 3 cm
Weight:	159 kg
Fixing sleeve:	80 x 80 mm
Maximum revolutions:	2500 rpm
Required connections:	Pressure - Return - Drain lines (pressure-free)
Required oil supply:	circa 45 l/min (only available with 16cc motor)
Min. - Max. oil pressure:	180 - 210 bar

The standard HS131HR will be supplied with 110 cm hoses featuring agricultural couplings.





# HS131C



## FURTHER DEVELOPMENT

The HS131C is a refined version of the HS131HR. Because the casing and knife-mounting disks have been modified, it is now possible to collect hedge trimmings in a waste container.

## MULTIFUNCTIONAL

All HS131HR trimmers supplied as of 2019 can be converted into trimmers with a collection feature. All HS131C trimmers supplied as of 2019 can be converted into standard mulching machines.

## SAFE AND FAMILIAR

When constructing the HS131C, the same familiar components are used as for the HS131HR.

PATENTED



# HEDGE TRIMMER

Suitable for collecting hedge trimmings

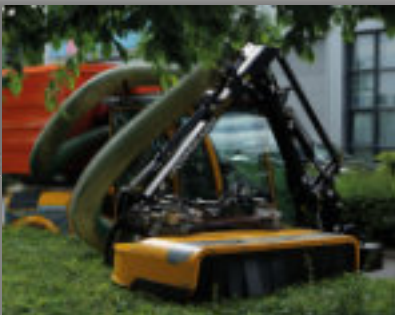
## HS131C

- Very safe thanks to a sealed casing
- Reliable
- Cost-effective
- Perfect trimming results
- Large capacity
- Low noise levels
- Compatible with almost all mowing arms

## SPECIFICATIONS

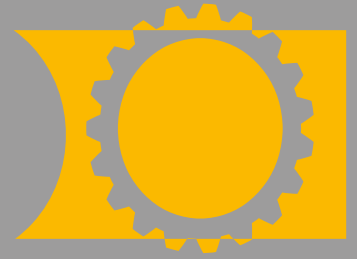
Type:	HS131C
Working width:	131 cm
Trimming capacity:	up to 2 cm
Weight:	159 kg
Fixing sleeve:	80 x 80 mm
Maximum revolutions:	2500 rpm
Required connections:	Pressure - Return - Drain lines (pressure-free)
Required oil supply:	circa 45 l/min (only available with 16cc motor)
Min. - Max. oil pressure:	180 - 210 bar

The standard HS131C will be supplied with 110 cm hoses featuring agricultural couplings.





# HS150HR



## LARGER

The Becx HS150HR is one of the largest machines in the Becx range of hedge trimmers. The trimming width has increased, as has the trimming capacity. The standard casing is very robust, which means an extra buffer is not needed when attached to e.g. an excavator.

## GOOD BASIS

The HS150HR has remained loyal to the basic principles of Becx hedge trimmers. Three motors, three trimmer heads with four double blades and the patented blade configuration.

This helps to safeguard reliability as well as trimming quality. The casing design is robust, effectively reduces the size of the material and is very safe.

## VERSATILE

Due to its powerful trimming mechanism, the HS150HR can be flexibly used for a variety of hedges and ground coverings. Due to the high intake, hedges can be significantly reduced in size in a single work process. The HS150HR is ideal for heavy duty work. Large tractors and/or midi excavators (with double rotator DRHS55) are ideal machines for carrying the HS150HR.

PATENTED





# HEDGE TRIMMER

## HS150HR

- Safe thanks to sealed casing
- Reliable
- Cost-effective
- Perfect trimming results
- Very robust
- Extra large capacity
- Low noise levels
- Compatible with almost all mowing arms

## SPECIFICATIONS

Type:	HS150HR
Working width:	150 cm
Trimming capacity:	up to 3.5 cm
Dead weight:	198 kg
Fixing sleeve:	80 x 80 mm
Maximum revolutions:	2000 rpm
Required oil supply:	circa 45 l/min (only available with 22cc motor)
Min. - Max. oil pressure:	180 - 210 bar

The standard HS150HR will be supplied with agricultural couplings.

## OPTIONS

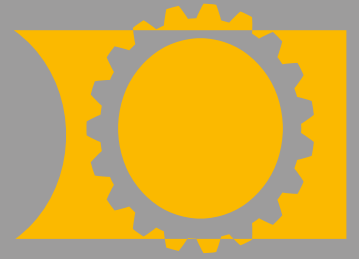
- Flow regulator for adjusting volume flow
- Assembly clamp for mounting at rear end



See the HS150HR in action at [www.becxmachines.com](http://www.becxmachines.com)



# HS210HR



## LARGE

The Becx HS210HR is the second largest machine in the hedge trimmer range of Becx Machines. This hedge trimmer with 5 trimmer heads is based on the HS131HR and therefore has all the advantages of the previous models.

The standard casing is extremely robust, so there is no need for an extra protection buffer when is attached to a crane, for example.

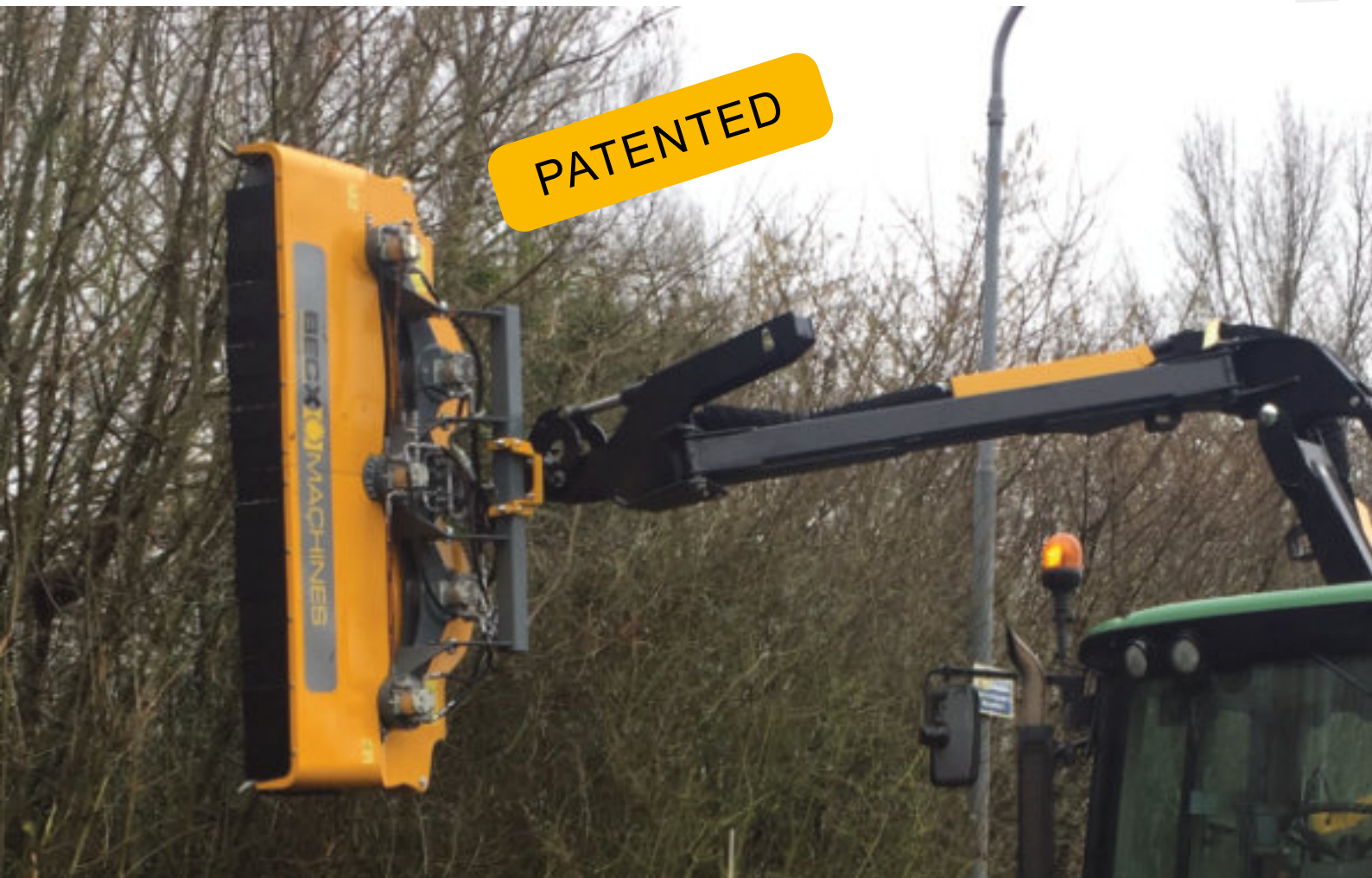
## SAFE AND RELIABLE

The sealed casing of the HS210HR is exceedingly safe. The casing helps to prevent trimmings from scattering. Downtime is kept to a minimum by using high performance steel, an effective construction and direct transmission based on top quality hydro-motors. The machine is also very easy and cheap to maintain.

## CAPACITY

Becx hedge trimmers are able to significantly reduce the size of hedges in a single work process, without making concessions in results. Noise levels are very low because the machine only uses hydro-motors and features no chains or V-belts. Furthermore, this machine has been designed for high production. Many hedges can be trimmed in one go thanks to the 210-cm working width.

**PATENTED**



# HEDGE TRIMMER

## HS210HR

- Very safe thanks to a closed casing made of high-strength steel
- Reliable and cost-saving
- Perfect trimming results
- Extra large capacity and working width
- Low noise levels
- Compatible with almost all mowing arms

## SPECIFICATIONS

Type:	HS210HR
Working width:	211 cm
Trimming capacity:	up to 3 cm
Dead weight:	269 kg
Fixing sleeve:	80 x 80 mm
Maximum revolutions:	2500 rpm
Required oil supply:	circa 90 l/min (featuring 16cc motor as standard)
Min. - Max. oil pressure:	180 - 210 bar

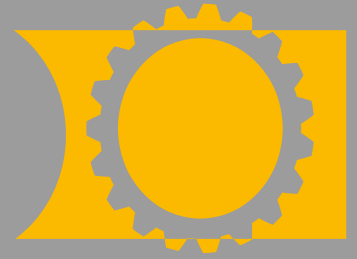


See the HS210HR in action at [www.becxmachines.com](http://www.becxmachines.com)





# HS240HR



## LARGEST

The Becx HS240HR is the largest machine in the hedge trimmer range from Becx Machines. This hedge trimmer with 5 trimmer heads is based on the HS150HR and therefore has all the advantages of the previous models.

The standard casing is extremely robust, so there is no need for an extra protection buffer when it is attached to a crane, for example.

## SAFE AND RELIABLE

The sealed casing of the HS240HR is exceedingly safe. The casing helps to prevent trimmings from scattering.

Downtime is kept to a minimum by using high performance steel, an effective construction and direct transmission based on top quality hydro-motors. The machine is also very easy and cheap to maintain.

## CAPACITY

Becx hedge trimmers are able to significantly reduce the size of hedges in a single work process, without making concessions in results. Noise levels are very low because the machine only uses hydro-motors and features no chains or V-belts. Furthermore, this machine has been designed for high production. Many hedges can be trimmed in one go thanks to the 240-cm working width.

PATENTED



Image of HS210HR

# HEDGE TRIMMER

## HS240HR

- Very safe thanks to a closed casing made of high-strength steel
- Reliable and cost-saving
- Perfect trimming results
- Extra large capacity and working width
- Low noise levels
- Compatible with almost all mowing arms

## SPECIFICATIONS

Type:	HS240HR
Working width:	240 cm
Trimming capacity:	up to 3.5 cm
Dead weight:	365 kg
Fixing sleeve:	80 x 80 mm
Maximum revolutions:	2000 rpm
Required oil supply:	circa 90 l/min (featuring 22cc motor as standard)
Min. - Max. oil pressure:	180 - 210 bar

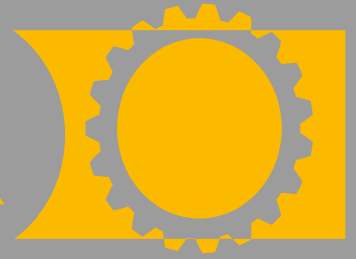


See the HS240HR in action at [www.becxmachines.com](http://www.becxmachines.com)





# WS300HR



## LARGE

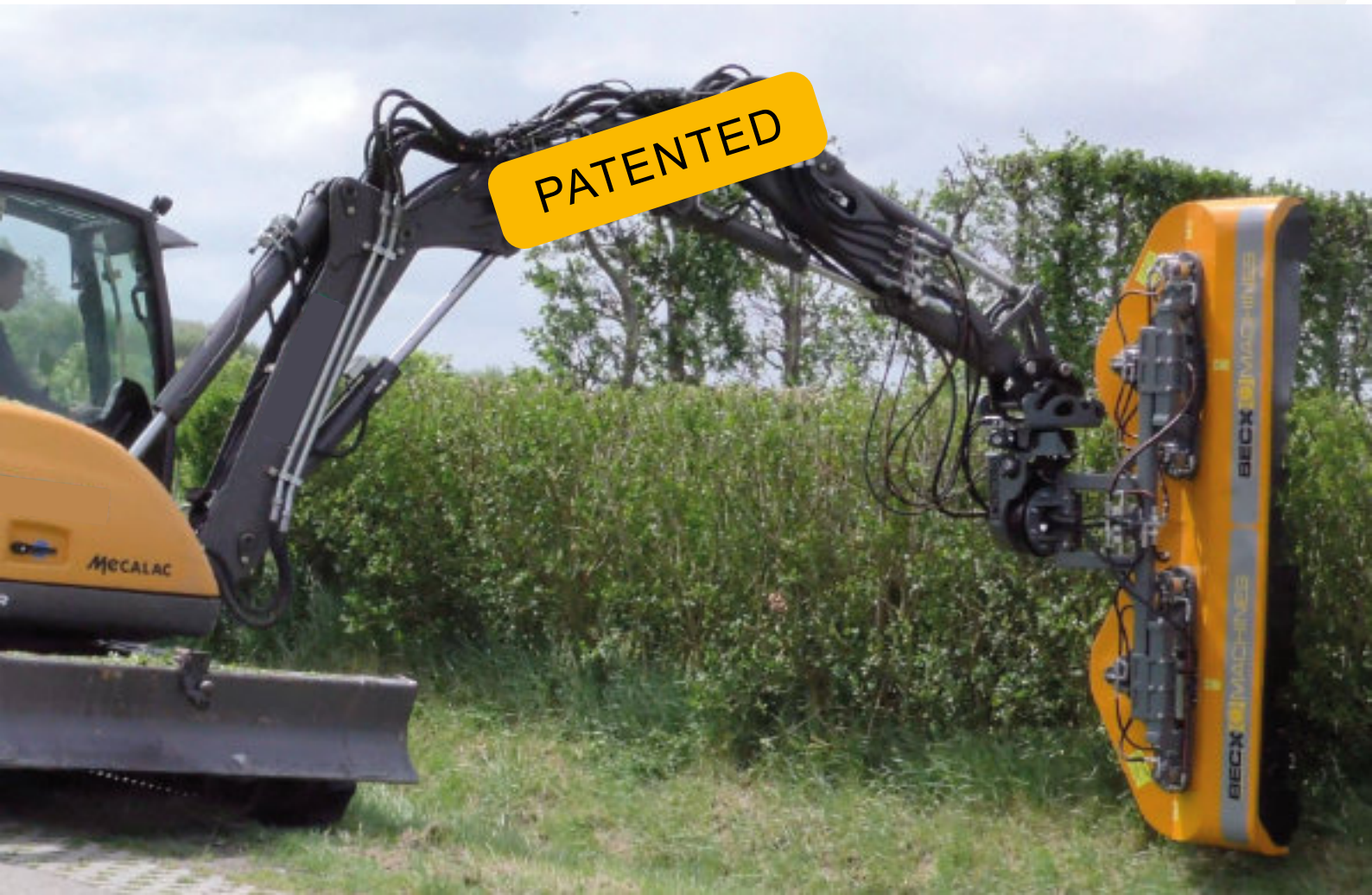
The Becc WS300HR is the largest machine in the hedge trimmer range from Beck Machines. This windbreak hedge trimmer with 6 trimmer heads is based on the HS150HR and therefore has all the advantages of the previous models. The standard casing is extremely robust, so there is no need for an extra protection buffer when it is attached to a crane, for example.

## SAFE AND RELIABLE

The sealed casing of the WS300HR is exceedingly safe. The casing helps to prevent trimmings from scattering. Downtime is kept to a minimum by using high performance steel, an effective construction and direct transmission based on top quality hydro-motors. The machine is also very easy and cheap to maintain.

## CAPACITY

This Becc trimmer is able to significantly reduce the size of windbreak hedges in a single work process, without making concessions in results. Noise levels are very low because the machine only uses hydro-motors and features no chains or V-belts. Furthermore, this machine has been designed for high production. Thanks to a working width of 300 cm, no challenge is beyond reach!





# Windbreak Hedge Trimmer

## WS300HR

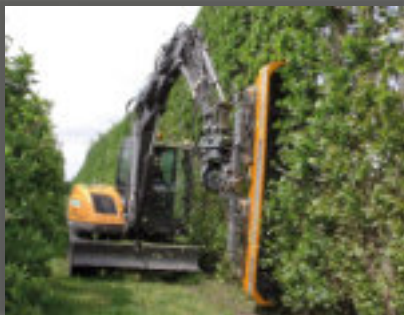
- Very safe thanks to a closed casing made of high-strength steel
- Reliable and cost-saving
- Good trimming results
- Extra large capacity and working width
- Low noise levels
- Compatible with almost all mowing arms

## SPECIFICATIONS

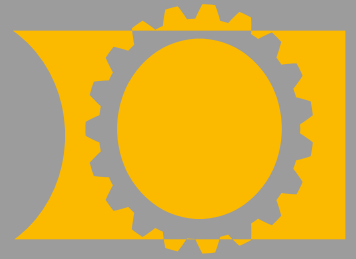
Type:	WS300HR
Working width:	300 cm
Trimming capacity:	up to 3.5 cm
Dead weight:	450 kg
Fixing sleeve:	80 x 80 mm
Maximum revolutions:	2000 rpm
Required oil supply:	circa 100 l/min (only available with 22cc motor)
Min. - Max. oil pressure:	180 - 210 bar



See the WS300HR in action at [www.becxmachines.com](http://www.becxmachines.com)



# WLA60



## WHEEL LOADER

From now on, you will be able to use your wheel loader for a wider range of purposes thanks to the WLA60. This trimming arm makes it possible to assemble Becx hedge trimmers on your loader. The WLA60 has been designed to make it compatible with almost all wheel loaders. Becx offers an option with valves and control panel if your wheel loader does not feature the required double hydraulic valves. The hedge trimmer is NOT included.

## FUNCTIONS

The WLA60 can be extended by 60 cm and tilted by 105 degrees. The arm can be mounted on the left or right, and on the back or front. When used together with your wheel loader's lifting function, it allows you to trim a wide range of hedges. The WLA60 is capable of carrying the HS75HR, HS130HR and the HS131HR.



# TRIMMING ARM FOR WHEEL LOADER

## WLA60

- Trim hedges with your wheel loader/loader
- Make your wheel loader/loader even more versatile
- Available with valve block and control panel
- Easy to maintain
- Compatible with almost all wheel loaders/loaders
- Easy assembly and disassembly
- Hedge trimmer NOT included!

## SPECIFICATIONS

Type:	WLA60
Extension width:	60 cm
Tilt angle:	105° degrees
Dead weight:	100 kg
Tool clamp:	80 x 80 mm
Maximum tool weight:	170 kg
Required double hydraulic functions:	2
Min. - Max. oil pressure:	140 - 250 bar

Take note: A separate continuous volume flow is needed to power your trimmer/tool. The standard WLA60 will be supplied with hoses to the mounting plate.

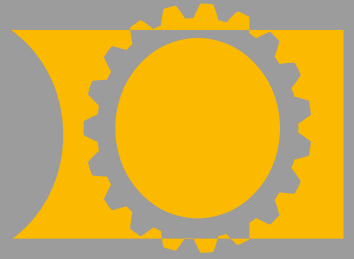


See the WLA60 in action at [www.becxmachines.com](http://www.becxmachines.com)





# DRHS55

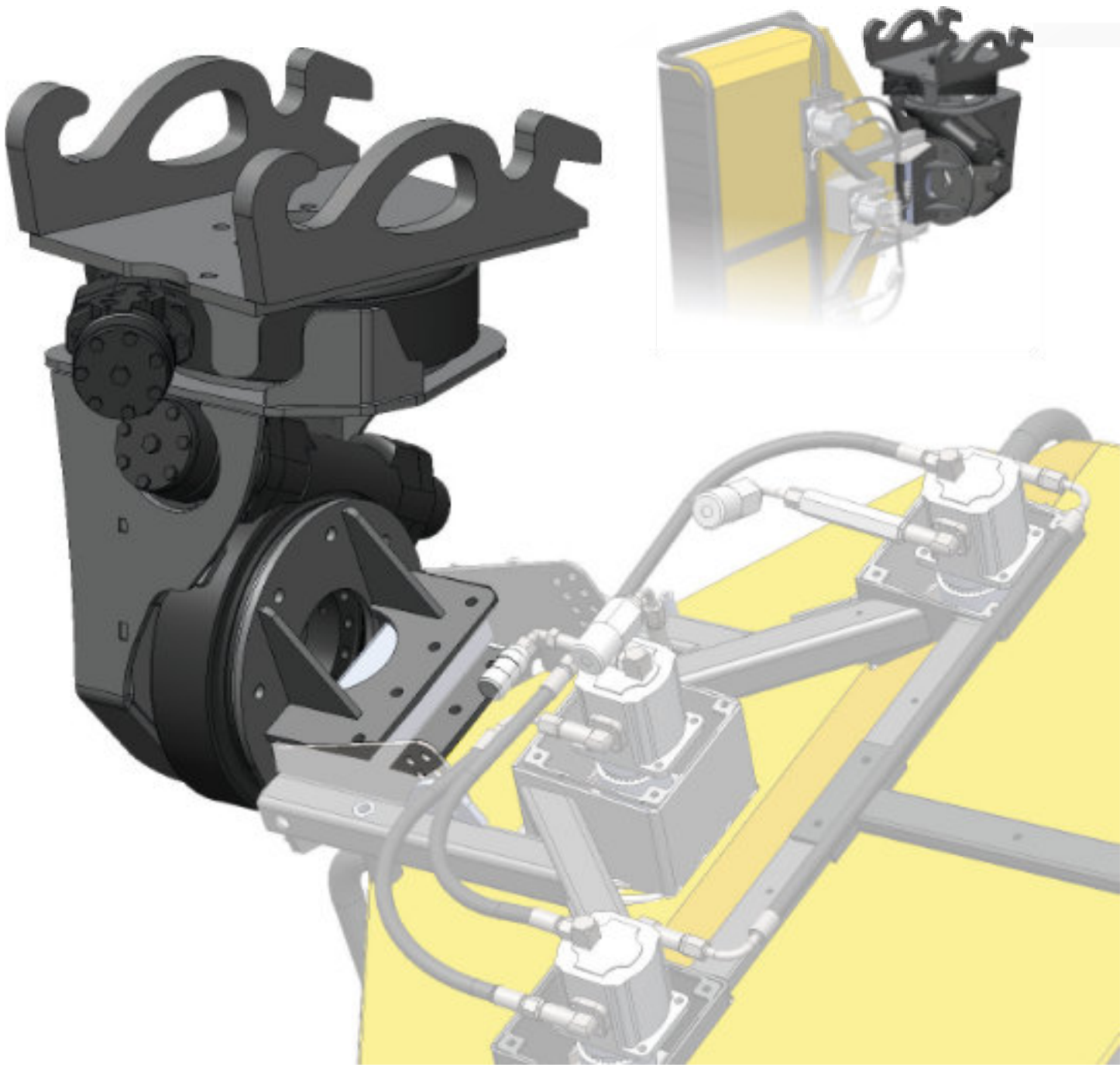


## MIDI EXCAVATOR

Mini cranes/ midi excavators are increasingly being used for professional trimming activities. Becc has developed the DRHS55 especially for this purpose. This double rotator unit features a universal CW10 quick-release connection. The rotator unit can also be fitted with the CW20 or CW30.

## FREEDOM OF MOVEMENT

The DRHS55 is compatible with all Beck hedge trimmers. By using two hydraulic swivel units, it is possible to rotate 180 degrees horizontally and vertically. The connection point for trimmers is a clamp coupling with standard dimensions of 80x80 mm.



# DOUBLE ROTATOR UNIT FOR HEDGE TRIMMER

## DRHS55

- Hedge trimming (midi) excavators
- High freedom of movement
- Very stable
- Easy to maintain
- CW10 quick-release coupling

## SPECIFICATIONS

Type:	DRHS55
Height in relation to coupling:	55 cm
Tilt angle (horizontal/vertical):	180° degrees
Dead weight:	185 kg
Maximum tool weight	450 kg
Tool clamp:	80 x 80 mm
Required double hydraulic functions:	2

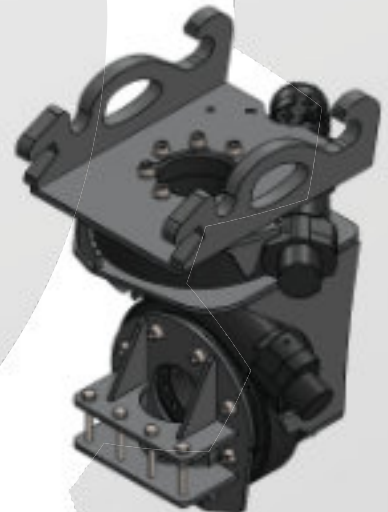
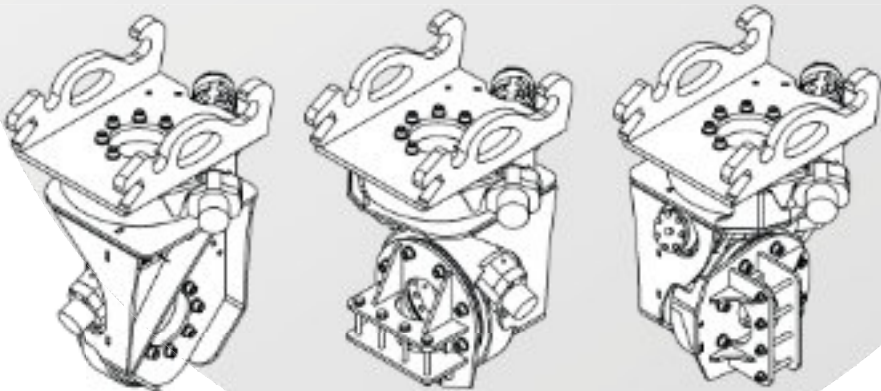
Take note: A separate continuous volume flow will be needed to power your trimmer/tool. The DRHS55 is supplied without hoses and couplings.

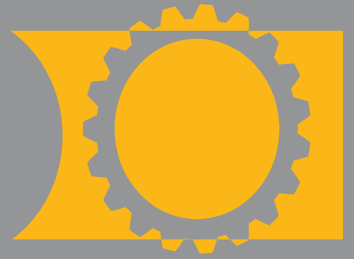
## OPTIONS

CW20 or CW30 coupling plate



See the DRHS55 in action at [www.becxmachines.com](http://www.becxmachines.com)





## MANUAL

The M in OB90M stands for manual. The clever construction allows the user to adjust the OB90M fully to his wishes and requirements. With its swivel reach of up to 180 degrees the machine can be used across a great range. The angle of the head can be tilted with respect to the paved surface. No hydraulic swivel options are used, so the carrier only requires a hydraulic pressure and return connection.

## MULTIFUNCTIONAL

The M in OB90M can also be understood to mean Multifunctional, because that is certainly a good description of this machine. The clever design of the brush head makes it possible to easily mount a sweeper on the machine. The 360-degree rotating brush head can even be used to sweep gutters. Nothing prevents you from using this machine on all types of terrain.

## RELIABLE

Using high-quality materials and components, we have succeeded again in developing a reliable machine. We made no concessions with the functionality and quality, and have created a machine which can be used for many years.





# WEED BRUSH 90M

## OB90M

- Minimum damage to surface due to use of large brush
- Very low noise levels
- Brush arm is hydraulically adjustable in all directions
- Can be mounted on almost all tool-carrier, tractor or loader brands.

## SPECIFICATIONS

Type:	OB90M
Brush diameter:	90 cm
Weight:	152 kg
Required oil supply:	20 - 60 l/m
Min. - Max. Oil pressure:	180-25 bar

## OPTIONS

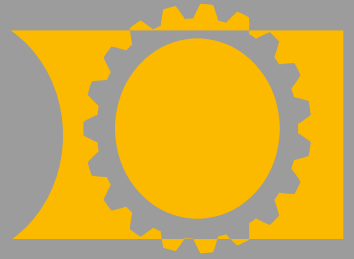
- This machine is also available with a synthetic sweeper

The standard OB90M will by default be supplied with hoses up to the mounting plate.



See the OB90M in action at [www.becxmachines.com](http://www.becxmachines.com)





## FULLY HYDRAULIC

The OB90 is an ideal choice for users who cover a lot of cleaning meters every day. All configuration possibilities are controlled hydraulically, which allows the operator to easily reach all sides and corners without losing time. The brush arm has a large reach and can be swiveled from left to right. The head can be tilted backwards and forwards, and from left to right. This allows the operator to position the brush exactly where necessary! The OB90 is also available with hydraulically adjustable edge trimmers. Conversion is always possible if you later decide to use your machine to trim edges. (see pages 30-31; OBKS90-45)

## SURROUNDINGS

Unlike many weed control machines, the OB90 does not use toxic substances or extra diesel when boiling water. The OB90 operates via the hydraulics of the tool carrier and is thus a perfect future-oriented solution when it comes to large-scale, sustainable and safe weed control. An extra large weed brush, with many wire bristles, has been developed to prevent damage to brushed surfaces. This brush offers excellent results at low revs!



# WEED BRUSH 90

## OB90

- Minimum damage to surface due to use of large brush
- Very low noise levels
- Brush arm hydraulically adjustable in all directions
- Can be mounted on almost all tool-carrier, tractor or loader brands

## SPECIFICATIONS

Brush diameter:	90 cm
Weight:	200 kg
Required oil flow brush:	20 - 60 l/m
Required double hydraulic functions:	3
Min. - Max. oil pressure:	180 - 250 bar

The standard OB90 will be supplied with hoses to the mounting plate.

## OPTIONS

- Machine can also be fitted with a blade, see pages 30-31; OBKS90-45

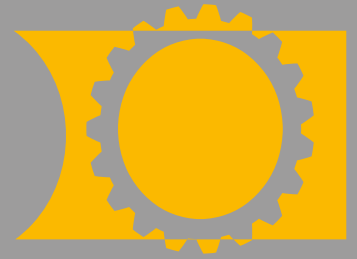


See the OB90 in action at [www.becxmachines.com](http://www.becxmachines.com)





# OBKS50-35



## INTELLIGENT DESIGN

The weed brush/edge trimming machines from Becx make it possible to brush surfaces and trim grass in a single work process. The standard OBKS50-35 has a brush diameter of 50 cm and a trimming diameter of 35 cm. A standard machine allows the working width to be mechanically adjusted, as well as the height of edge-trimming blades in relation to the brush. The angle of the brush can also be mechanically adjusted.

## HYDRAULIC OPTIONS

The working width and the height of the blade can be adjusted hydraulically. These options can easily be added to your machine at a later time. If your machine does not have enough double hydraulic functions, the machine can be fitted with hydraulic valves and an accompanying control panel.

## COST-EFFECTIVE

The machine's intelligent design keeps production costs to a minimum, which pays off in the initial purchase price. Without making concessions in quality or functionality, Becx offers you a fantastic, complete machine: great performance for a great price.



# WEED BRUSH EDGE TRIMMER 50-35

## OBKS50-35

- Brushing and edge trimming in a single work process
- Mechanical and hydraulic controls
- Very competitive price, without concessions in quality
- Spring-mounted overload switch on the blade
- Compatible with almost all tool carriers, tractors or loaders
- Hydraulically-driven brush

## SPECIFICATIONS

Type:	OBKS50-35
Brush diameter:	50 cm
Blade diameter:	35 cm
Weight:	170 kg
Required oil supply:	20 - 60 l/min
Min. - Max. oil pressure:	180 - 250 bar

## OPTIONS

- Hydraulic configuration working width
- Hydraulic configuration blade height
- Swiveling brush head

The standard OBKS50-35 will be supplied with hoses to the mounting plate.



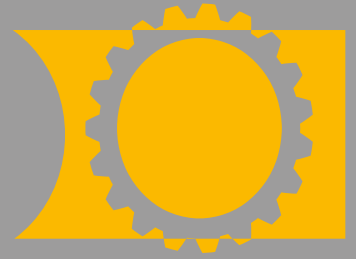
See the OBKS50-35 in action at [www.becxmachines.com](http://www.becxmachines.com)





# OBKS50-45

(Available as of mid-2020)



## FULLY HYDRAULIC

The OBKS50-45 is a superb, complete machine for professional users. The operator can control all rotation and swivel functions from his cabin. This range of configuration possibilities improves the number of meters that can be brushed and cut each day. Because the brush and blade can be configured from inside the cabin, this machine is able to trim most grass verges and brush most surfaces! It is also possible to fully withdraw the blade, thus allowing only brushing activities to be carried out.

## SURROUNDINGS

Unlike many weed control machines, the OBKS50-45 does not use toxic substances or extra diesel when boiling water. The OBKS50-45 works via the hydraulics of the tool carrier and is thus a perfect future-oriented solution when it comes to large-scale, sustainable and safe weed control. A special weed brush, with many wire bristles, has been developed to prevent damage to brushed surfaces. This brush offers excellent results at low revs!

## BLADE

Both the height and width of the trimming arm can be adjusted. Both settings feature pressure-regulated valves, which prevent the blade from moving into unwanted positions. The blade controls also feature two accumulators that allow the blade to deviate if excessive pressure is encountered. The brush automatically follows the blade if there is a sudden change of direction. A clearly visible pressure meter allows the operator to keep a close eye on the pressure.





# WEED BRUSH EDGE TRIMMER 50-45

## OBKS50-45

- The brush head moves with the blade during trimming
- Cost-efficient for customers due to the combined trimming and brushing process
- Minimum damage to surface due to use of large brush
- Very low noise levels
- Brush arm hydraulically adjustable in all directions
- Blade hydraulically adjustable in height and width
- Blade arm features hydraulic pressure-regulated valves
- Blade features lateral overload switch
- Suitable as weed brush when blade is withdrawn
- Can be mounted on almost all tool-carrier, tractor or loader brands.

## SPECIFICATIONS

Brush diameter:	50 cm
Blade diameter:	45 cm
Required oil supply brush:	20 - 60 l/m
Required double hydraulic functions:	3
Required 12 volt. conn.:	2
Min. - Max. oil pressure:	180 - 250 bar
Weight:	210 kg

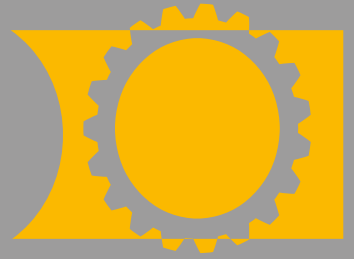
The standard OBKS50-45 will be supplied with hoses up to the mounting plate



See the OBKS50-45 in action at [www.becxmachines.com](http://www.becxmachines.com)



# OBKS90-45



## FULLY HYDRAULIC

The OBKS90-45 is a superb, complete machine for professional users. The operator can control all rotation and swivel functions from his cabin. This range of configuration possibilities improves the number of meters that can be brushed and cut each day. Because the brush and blade can be configured from inside the cabin, this machine is able to trim most grass verges and brush most surfaces! It is also possible to fully withdraw the blade, thus allowing only brushing activities to be carried out.

## SURROUNDINGS

Unlike many weed control machines, the OBKS90-45 does not use toxic substances or extra diesel when boiling water. The OBKS90-45 works via the hydraulics of the tool carrier and is thus a perfect future-oriented solution when it comes to large-scale, sustainable and safe weed control. An extra large weed brush, with many wire bristles, has been developed to prevent damage to brushed surfaces. This brush offers excellent results at low revs!

## BLADE

Both the height and width of the trimming arm can be adjusted. Both settings feature pressure-regulated valves, which prevent the blade from moving into unwanted positions. The blade controls also feature two accumulators that allow the blade to deviate if excessive pressure is encountered. A clearly visible pressure meter allows the operator to keep a close eye on the pressure.



# WEED BRUSH EDGE TRIMMER 90-45

## OBKS90-45

- Cost-efficient for customers due to the combined trimming and brushing process
- Minimum damage to surface due to use of large brush
- Very low noise levels
- Brush arm hydraulically adjustable in all directions
- Blade hydraulically adjustable in height and width
- Blade arm features hydraulic pressure-regulated valves
- Blade features lateral overload switch
- Suitable as weed brush when blade is withdrawn
- Can be mounted on almost all tool-carrier, tractor or loader brands

## SPECIFICATIONS

Brush diameter:	90 cm
Blade diameter:	45 cm
Required oil supply brush:	20 - 60 l/m
Required double hydraulic functions:	3
Required 12 volt. conn.:	2
Min. - Max. oil pressure:	180 - 250 bar
Weight:	230 kg

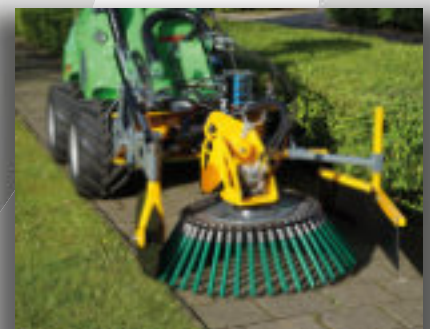
The standard OBKS90-45 will be supplied with hoses to the mounting plate.

## OPTIONS

- Machine is also available without edge trimmer; see OB90



See the OBKS90-45 in action at [www.becxmachines.com](http://www.becxmachines.com)





---

---

---

---

---

---

---

---

---

---



Contact via your dealer:

Becx Machines B.V.  
De Sonman 35  
5066 GJ Moergestel  
Netherlands  
[www.becxmachines.com](http://www.becxmachines.com)  
[info@becxmachines.com](mailto:info@becxmachines.com)  
tel: +31 (0) 13 207 0760