

SEE MORE.
WORK
SAFER.



LAZER
HIGH PERFORMANCE LIGHTING

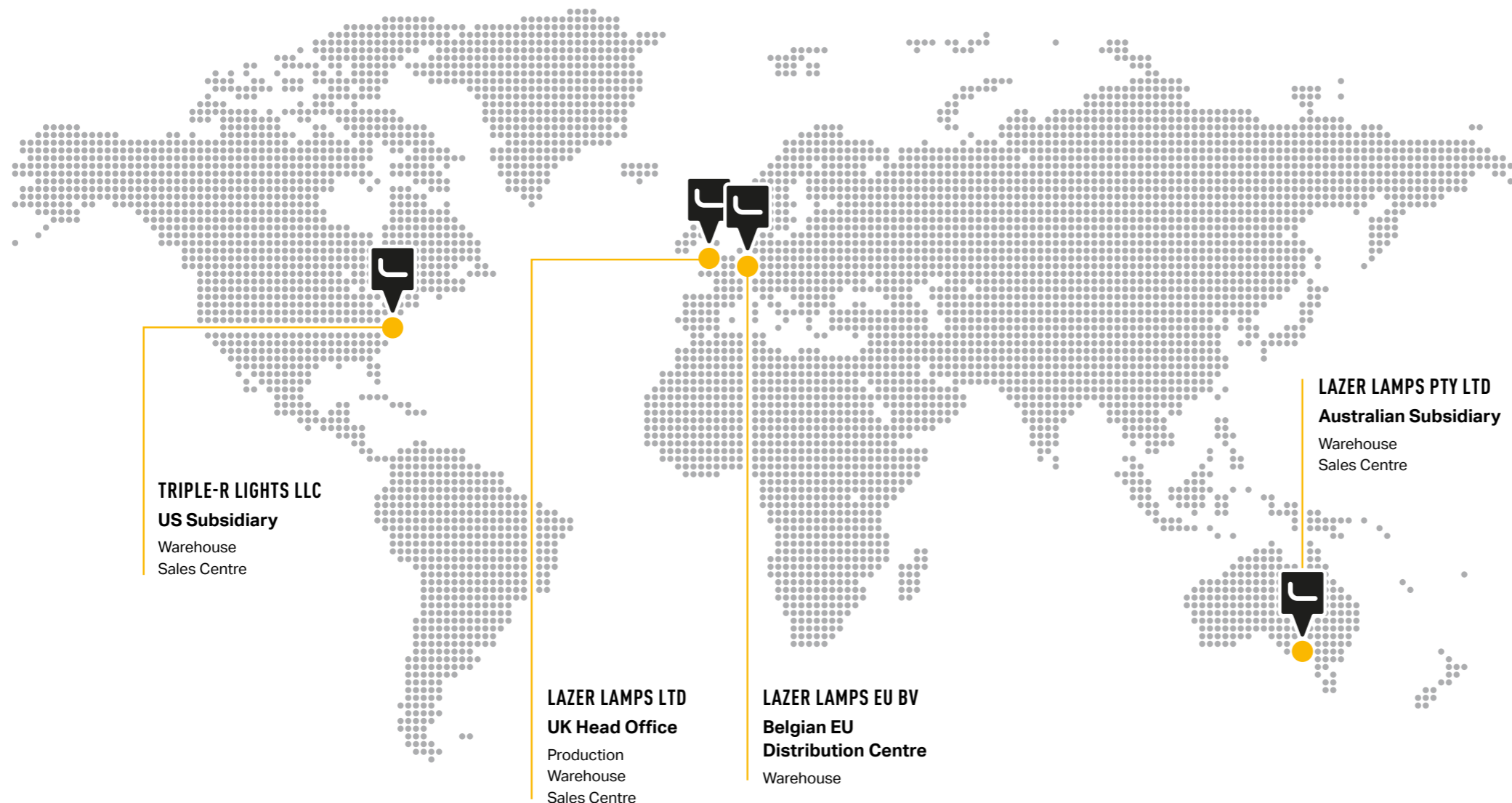


CONTENTS

- 04 About Lazer
- 06 Engineering
- 08 Manufacturing
- 10 Testing
- 12 Case Studies
- 14 Utility Series
- 16 Utility-25
- 18 Utility-25 MAXX
- 20 Utility-45
- 22 Utility-80
- 24 Utility-80HD
- 26 Linear-24 Flood
- 28 Triple-R 1000 Beacon
- 30 LED Driving Lights
- 31 Vehicle Integration Kits
- 32 Contact

This brochure includes reference to our most popular products and accessories, however we have other products available not included here, but which can be viewed online at www.lazerlamps.com. So too our comprehensive range of bespoke capabilities can be discussed on request from sales@lazerlamps.com.

ABOUT LAZER



All Lazer products are designed and manufactured at our UK head office and production facility, while we position ourselves strategically with local warehouses and sales centres, to offer a first class service to customers across the world, backed up by local knowledge and experience.

Since 2010, Lazer Lamps Ltd, a renowned British manufacturer, has consistently held a leading position in the realm of LED technology, steadfastly delivering top-tier solutions to its esteemed customers. By establishing the industry benchmark for automotive auxiliary lighting, Lazer's extensive experience in these products has played a pivotal role in the development of industry-leading utility work lights tailored to a variety of job sites.

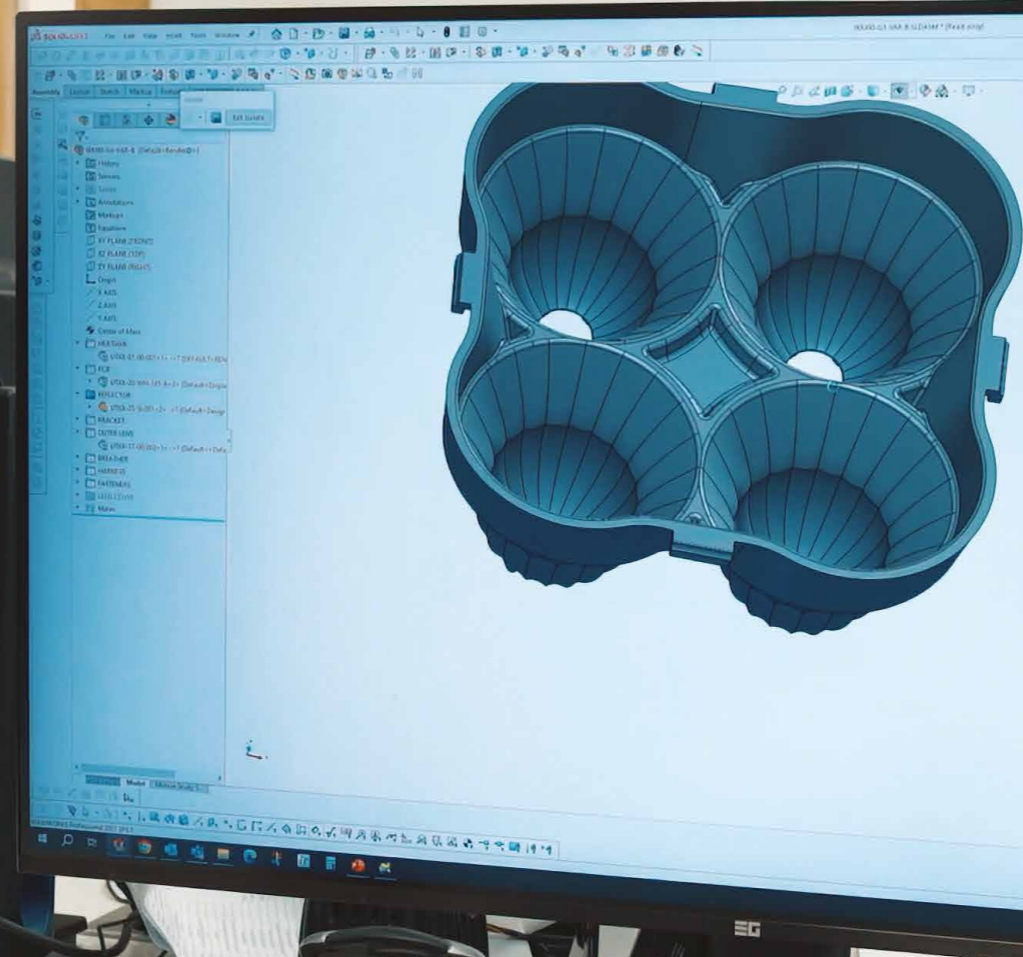
Recognising that the right lighting can significantly impact professionals, Lazer has unveiled robust LED work lights meticulously designed to enhance safety, productivity, and efficiency across various machines. Operating proudly from the UK, Lazer takes immense pride in overseeing the complete development, design, manufacturing, and testing of our entire work light series.

FIND OUT MORE



ENGINEERING

With products designed and engineered in-house we have full control over our products, including rapidly responding to market requests, and technological innovation.



The expertise and knowledge that exists within our engineering team is supplemented by supplier partnerships, each leaders and innovators in their respective fields. Close collaboration guarantees we remain at the cutting-edge of technology, while adoption of state-of-the-art CAD, light simulation and testing software, and 3D dimensional analysis and print, helps ensure the technology is analysed, adopted, and optimised for maximum benefit.

All products are subjected to strict testing, conducted both in-house and at ECE test houses within Europe. In meeting the rigid requirements of our customers, there is no compromise in the high standards we, or our partners, are willing to accept.

YOU CAN'T TAKE CHANCES WITH PRODUCT QUALITY, IT NEEDS TO BE DESIGNED IN FROM THE START, BACKED UP BY EXTENSIVE TESTING. THAT'S HOW WE'RE ABLE TO OFFER OUR CUSTOMERS A 5 YEAR WARRANTY ON ALL OF OUR PRODUCTS; THESE LIGHTS ARE BUILT TOUGH AND WE APPRECIATE OUR CUSTOMERS, INCLUDING ACROSS THE AGRICULTURAL SECTOR, EXPECT TROUBLE-FREE, CONSISTENT USE FOR MANY YEARS.

Ben Russell-Smith, Director

FIND OUT MORE



MANUFACTURING

Every one of our high performance lighting solutions has been built in-house, in the UK, within premises accredited to ISO9001, ISO14001, and ISO45001 standards. The visibility and control this provides is integral to our mission of only supplying world class products.

With a large proportion of the build process completed by hand, our skilled workforce takes both pride and accountability in their work. An attention to detail is imperative, and their intricate work is facilitated at certain points with state-of-the-art automated equipment, which combined, ensures an exceptionally high standard and consistency to our products. These standards are upheld by end-of-line testing on every product that we produce.

The benefits of in-house manufacture go beyond superior quality control; every operator is empowered and encouraged to provide regular feedback and suggestions in regards the processes and systems we employ. Alongside the work of our Engineering department, this continuous improvement is to the advantage of the performance and reliability of our products.

WHERE POSSIBLE COMPONENT PARTS ARE SOURCED LOCALLY, BY SUPPLY PARTNERS WHO DEMONSTRATE A SIMILAR COMMITMENT TO PRODUCT QUALITY AND IMPROVEMENT.

**SEE MORE.
WORK
SAFER.**



FIND OUT MORE



TESTING

Tailored to the requirements of the agricultural industry, Lazer's robust and versatile range of LED work lamps enable farmers and agricultural contractors to see more and work safer. We recognise customers don't want to take chances though, which is why all of our lights are tested to rigorous standards intended to ensure trouble-free operation for many years.



FIND OUT MORE



It is of vital importance that lighting does not affect control systems, cameras, on-board computers and other radio sensitive equipment. This is why Lazer's lights are scrutinised to ensure they do not interfere with EMC functionality.



IP 68 & 69K ratings offers complete peace of mind that the work light you are installing have undergone rigorous tests to ensure it is both durable and conforms to the highest standards on the scale of protection against water, moisture and dust ingress.

Vibration testing

Lazer's lights undergo extensive vibration testing, for 8 hours on each axis, up to 5 Grms at a frequency range from 10-2,000 Hz. This simulates the vibration forces experienced by the lights once mounted on off highway machines.

Salt spray testing

Lazer's lights undergo rigorous salt spray testing to ensure they are approved to ASTM B117 standards and beyond. This ensures that even in corrosive environments, Lazer's lights will continue to perform.

Environmental testing

Lazer's lights are tested in hot and cold temperatures, as well as humidity, for a minimum of 10 days. They are tested in conditions up to -40C° to +85C° and up to 90% humidity.

Endurance testing

Lazer Lamps conduct a continuous 4000-hour test cycle to mimic the 24-hour operational conditions with minimal downtime experienced in extreme customer environments.





FIND OUT MORE

CASE STUDIES



For over five years, I've worked in forestry and the environmental sector, managing diverse projects, including nighttime highway vegetation clearance and flood mitigation. The key to success in this field is reliable and durable lighting.

Lazer products have been a consistent choice, especially during nighttime highway projects, where time is crucial. Their lights are built to withstand tough conditions, making them highly dependable.

WHAT SETS LAZER APART IS THEIR EXCEPTIONAL DURABILITY, DESIGNED TO ENDURE DEBRIS AND BRANCHES, WITH A LIFETIME GUARANTEE PROVIDING PEACE OF MIND.

Lazer Utility lights excel with their wide coverage and clear, penetrating beam pattern, perfect for nighttime operations. Their market-leading quality and crystal-clear illumination make them my top choice.

CALLUM DYCKES
CD FORESTRY EXCAVATIONS



Carrs Billington Agriculture, a renowned supplier with 11 agricultural depots, embarked on a transformative journey with Lazer Lamps, a product already on our radar. Having a history of selling light bars, we initially partnered with an industry leading agricultural supplier, having been enticed by their diverse product range and potential for white labelling. However, persistent issues began to overshadow the advantages, as the original light bars suffered significantly from water ingress, causing dissatisfaction among some of our customers.

Recognising the premium quality of Lazer Lamps, we made a decisive move to promote the brand aggressively. The positive response was evident as our products flew off the shelves, especially among farmers eager to integrate Lazer's lighting solutions into their tractors and agricultural machinery.

**EXCELLENT PRODUCTS.
WOULD NOT GO ANYWHERE ELSE.**

DEXTER HUBBARD
CARR'S BILLINGTON



UTILITY SERIES

A range of high performance LED work lamps and accessories, which combine highly efficient LED systems with patent-pending design features to maximise light output, functionality, and reliability.

'UNBREAKABLE' POLYCARBONATE LENS

3mm lexan polycarbonate with hardcoat lacquer provides exceptional protection from impact and heat.

HIGH DENSITY LEDS

Across all variants ensures that light output is maximised through use of the latest, most advanced and efficient LED technology available.

EMC PROTECTION

Approved to CISPR-25 Class 3/5 ensures no interference with other electrical machinery or appliances.

VACUUM-METALLISED REFLECTOR TECHNOLOGY

Designed and engineered in the UK to deliver light further and wider, in a symmetrical flood beam pattern.

5,000 KELVIN COLOUR TEMPERATURE FOR MAXIMUM DEFINITION

While reducing fatigue and eye strain that can come from using higher colour ranges.

AUTOMOTIVE GRADE CORROSION RESISTANCE

E-coat pre-treatment prior to black powder coating ensures exceptional corrosion resistance including against harsh chemical treatments.

OVER VOLTAGE PROTECTION

In-built into the electronic circuitry to prevent damage, alongside protection against reverse polarity.

ELECTRONIC THERMAL MANAGEMENT

Optimises light output considering the environmental and thermal conditions of the lamp.

CAE OPTIMISED REAR 'MATRIX' COOLING SYSTEM

Provides more efficient thermal management to maximise light output.

MALE & FEMALE DEUTSCH CONNECTORS INCLUDED

Part no. DT06-2S / DT04-2P.

AUTOMOTIVE GRADE CORROSION RESISTANCE

E-coat pre-treatment prior to black powder coating ensures exceptional corrosion resistance including against harsh chemical treatments.

ROBUST STAINLESS STEEL MOUNTING OPTIONS

Provide flexibility to angle light up/down and left/right from a horizontal or vertical mounting position.



**HIGH PERFORMANCE
LED WORK LAMPS**

FIND OUT MORE



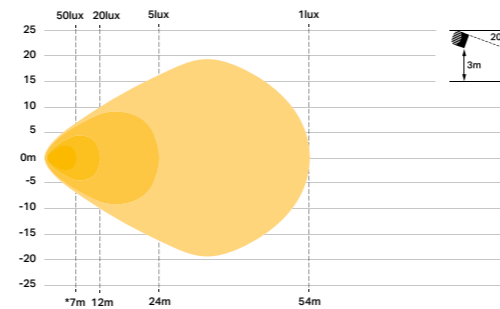
UTILITY 25

The Utility-25 is a hugely versatile, medium-duty work light, which through the latest advances in LED lighting technology, gives superior levels of light output considering its compact size. The lamp is built tough and engineered to deliver constant, reliable light output perfectly tuned to a broad range of applications and vehicle types.

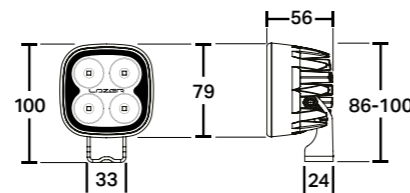


AMBER LENS COVER (UTILITY-25)
00U25-ALC
Compatible with Utility-25 / Utility-25 MAXX.

PHOTOMETRIC DATA



DIMENSIONS (MM)



PRODUCT FEATURES

- UNECE approved Work Light (Reg 10)
- High density, premium 'bin' LEDs
- Advanced optical design delivers superior lighting performance
- CAE optimised 'Matrix' cooling system offers improved thermal dynamics
- Electronic thermal management system optimises light output to preserve longevity of the LEDs
- Anodised pre-treatment and automotive grade powder top-coat for ultimate corrosion and chemical protection
- EMC protected - CISPR 25: 2008 (Class 5)
- Over voltage protected
- Reverse polarity protected
- 'Unbreakable' polycarbonate lens with hardcoat lacquer
- IP68 / IP69K watertight
- 5-year warranty*
- Supplied with pre-wired male/female 2-pin Deutsch connectors
- Designed and manufactured in UK

*5 Year Warranty applies for Automotive and Commercial Fleet use, all other applications a 2 Year Warranty period applies.

TECHNICAL SPECIFICATIONS

VOLTAGE RANGE (DC)	10-32V
LED LIFE	50,000 HOURS**
COLOUR TEMPERATURE	5,000 KELVIN
WEIGHT	360 G
HIGH BEAM FUNCTION	
TOTAL LUMINOUS FLUX	3016 LM
COLOUR TEMPERATURE	5000K
NUMBER OF HIGH OUTPUT LEDs	4
POWER CONSUMPTION	25 WATTS
CURRENT DRAW (AT 14.4V)	1.6 AMPS
CERTIFICATION	
WORK LAMP	ECE R10
IP RATING	IP68 / IP69K
SALT SPRAY TEST	ISO 9227 (2000H)
EMC PROTECTION	CISPR-25 (CLASS 5)
OPERATING CONDITIONS	
VIBRATION (BS EN 60068-2-64)	10HZ > 1000HZ, 0.14>20 (M/S ²)/HZ
OPERATING TEMPERATURE	-40°C ... +90°C
DIMENSIONS	
WIDTH	80 MM
DEPTH	56 MM
HEIGHT	80 MM
PHOTOMETRIC DATA	
1 LX LINE	54 M
5 LX LINE	24 M
20 LX LINE	12 M
50 LX LINE	7 M ¹

¹50Lx represents HSE guidelines for effective illumination when working outdoors at night.
**LED manufacturers specification.



**HIGH PERFORMANCE
LED WORK LAMPS**

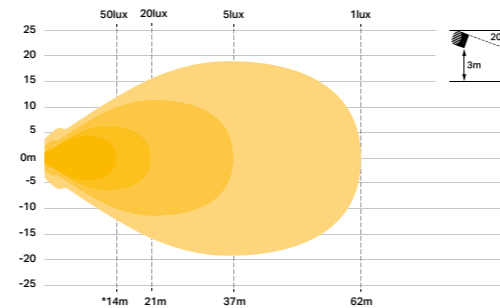
UTILITY 25 MAXX

A hugely versatile, medium-duty work light. The Utility-25 MAXX incorporates higher output 11W LEDs to deliver seriously impressive lighting performance. The lamp is built tough and engineered to deliver constant, reliable light output perfectly tuned to a broad range of applications and vehicle types.

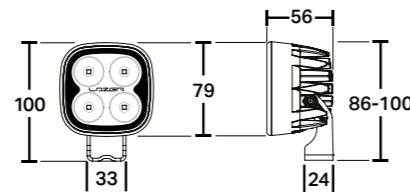


AMBER LENS COVER (UTILITY-25)
00U25-ALC
Compatible with Utility-25 / Utility-25 MAXX.

PHOTOMETRIC DATA



DIMENSIONS (MM)



PRODUCT FEATURES

- ECE (Reg 10) approved Work Light
- CAE optimised 'Matrix' cooling system
- Advanced optical design delivers superior lighting performance
- Electronic thermal management
- IP68 / IP69K watertight
- Automotive grade corrosion resistance (ISO 9927 / BS EN 60068)
- 5,000 kelvin light temperature for maximum definition
- EMC protected – CISPR 25: 2008 (Class 4) certified
- Vibration Certified (BS EN 60068): 10Hz - 2000Hz, 1 oct/min, 10gn
- Over voltage protected
- Reverse polarity protected
- Male and female 2-pin Deutsch connectors included
- 5-Year warranty*
- Designed and manufactured in UK

*5 Year Warranty applies for Automotive and Commercial Fleet use, all other applications a 2 Year Warranty period applies.

TECHNICAL SPECIFICATIONS

VOLTAGE RANGE (DC)	10-32V
LED LIFE	50,000 HOURS**
COLOUR TEMPERATURE	5,000 KELVIN
WEIGHT	360 G
HIGH BEAM FUNCTION	
TOTAL LUMINOUS FLUX	4560 LM
COLOUR TEMPERATURE	5000K
NUMBER OF HIGH OUTPUT LEDS	4
POWER CONSUMPTION	45 WATTS
CURRENT DRAW (AT 14.4V)	3.1 AMPS
CERTIFICATION	
WORK LAMP	ECE R10
IP RATING	IP68 / IP69K
SALT SPRAY TEST	ISO 9227 (2000H)
EMC PROTECTION	CISPR-25 (CLASS 4)
OPERATING CONDITIONS	
VIBRATION (BS EN 60068-2-64)	10HZ > 1000HZ, 0.14>20 (M/S ²)/HZ
OPERATING TEMPERATURE	-40°C ... +90°C
DIMENSIONS	
WIDTH	80 MM
DEPTH	56 MM
HEIGHT	80 MM
PHOTOMETRIC DATA	
1 LX LINE	62 M
5 LX LINE	37 M
20 LX LINE	21 M
50 LX LINE	14 M†

†50Lx represents HSE guidelines for effective illumination when working outdoors at night.
**LED manufacturers specification.

FIND OUT MORE



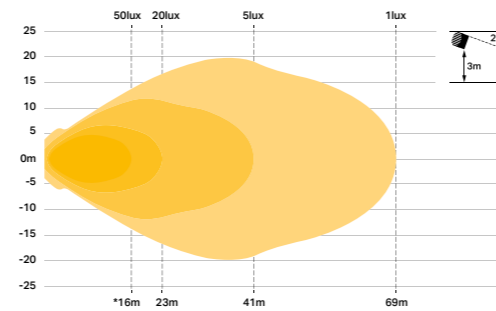
**HIGH PERFORMANCE
LED WORK LAMPS**

UTILITY 45

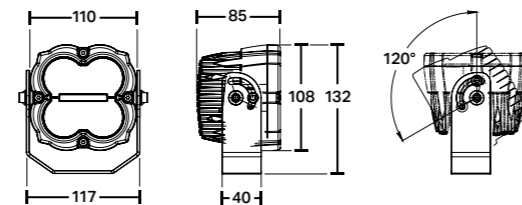
A heavy-duty work light, delivers even more visibility with greater intensity and improved spread of light. The 50 lux line, defined by HSE as the effective level of illumination when working outdoors at night, is achieved at 16m distance, with a spread of 10m (mounted at 3m with 20 degree down angle). This product delivers exceptional performance, time after time, whatever the application.



PHOTOMETRIC DATA



DIMENSIONS (MM)



PRODUCT FEATURES

- UNECE approved Work Light (Reg 10)
- High density, premium 'bin' LEDs
- Advanced optical design delivers superior lighting performance
- CAE optimised 'Matrix' cooling system offers improved thermal dynamics
- Electronic thermal management system optimises light output to preserve longevity of the LEDs
- Anodised pre-treatment and automotive grade powder top-coat for ultimate corrosion and chemical protection
- EMC protected – CISPR 25: 2008 (Class 3)
- Over voltage protected
- Reverse polarity protected
- ADR compliant versions available (does not cover vehicle side connections)
- Optional Quad Core Dampening System protects against vibration (wide mount compatible only)
- 'Unbreakable' polycarbonate lens with hardcoat lacquer
- IP68 / IP69K watertight
- 5-year warranty*
- Supplied with pre-wired male/female 2-pin Deutsch connectors
- Designed and manufactured in UK

*5 Year Warranty applies for Automotive and Commercial Fleet use, all other applications a 2 Year Warranty period applies.

TECHNICAL SPECIFICATIONS

VOLTAGE RANGE (DC)	10-32V
LED LIFE	50,000 HOURS**
COLOUR TEMPERATURE	5,000 KELVIN
WEIGHT	1260 G
HIGH BEAM FUNCTION	
TOTAL LUMINOUS FLUX	4560 LM
COLOUR TEMPERATURE	5000K
NUMBER OF HIGH OUTPUT LEDS	4
POWER CONSUMPTION	45 WATTS
CURRENT DRAW (AT 14.4V)	3.1 AMPS
CERTIFICATION	
WORK LAMP	ECE R10
IP RATING	IP68 / IP69K
SALT SPRAY TEST	ISO 9227 (2000H)
EMC PROTECTION	CISPR-25 (CLASS 3)
OPERATING CONDITIONS	
VIBRATION (BS EN 60068-2-64)	10HZ > 1000HZ, 0.14>20 (M/S ²)/HZ
OPERATING TEMPERATURE	-40°C ... +90°C
DIMENSIONS	
WIDTH	110 MM
DEPTH	85 MM
HEIGHT	108 MM
PHOTOMETRIC DATA	
1 LX LINE	69 M
5 LX LINE	41 M
20 LX LINE	23 M
50 LX LINE	16 M'

*50Lx represents HSE guidelines for effective illumination when working outdoors at night.

**LED manufacturers specification.

FIND OUT MORE



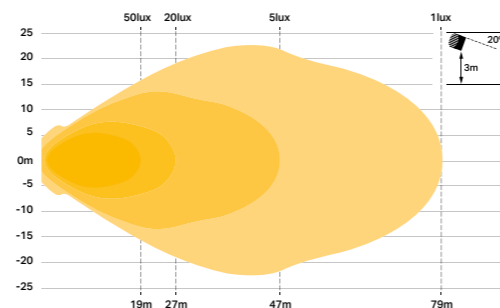
**HIGH PERFORMANCE
LED WORK LAMPS**

UTILITY 80

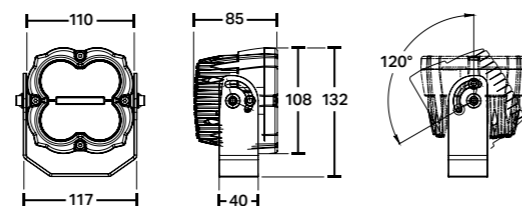
A heavy-duty work light upgraded in 2018 that represents the very best lighting performance through greater intensity and improved spread of light, compared to other work lights of a comparable size and power. Advanced materials and electronics design has made it possible to harness the light output of 4x20W LEDs in a compact unit to deliver a consistently high level of light output akin to much larger products.



PHOTOMETRIC DATA



DIMENSIONS (MM)



PRODUCT FEATURES

- UNECE approved Work Light (Reg 10)
- High density, premium 'bin' LEDs
- Advanced optical design delivers superior lighting performance
- CAE optimised 'Matrix' cooling system offers improved thermal dynamics
- Electronic thermal management system optimises light output to preserve longevity of the LEDs
- Anodised pre-treatment and automotive grade powder top-coat for ultimate corrosion and chemical protection
- EMC protected – CISPR 25: 2008 (Class 3)
- Over voltage protected
- Reverse polarity protected
- ADR compliant versions available (does not cover vehicle side connections)
- Optional Quad Core Dampening System protects against vibration (wide mount compatible only)
- 'Unbreakable' polycarbonate lens with hardcoat lacquer
- IP67 watertight
- 5-year warranty*
- Supplied with pre-wired male/female 2-pin Deutsch connectors
- Designed and manufactured in UK

*5 Year Warranty applies for Automotive and Commercial Fleet use, all other applications a 2 Year Warranty period applies.

TECHNICAL SPECIFICATIONS

VOLTAGE RANGE (DC)	10-32V
LED LIFE	50,000 HOURS**
COLOUR TEMPERATURE	5,000 KELVIN
WEIGHT	1260 G
HIGH BEAM FUNCTION	
TOTAL LUMINOUS FLUX	8820 LM
COLOUR TEMPERATURE	5000K
NUMBER OF HIGH OUTPUT LEDS	4
POWER CONSUMPTION	80 WATTS
CURRENT DRAW (AT 14.4V)	5.5 AMPS
CERTIFICATION	
WORK LAMP	ECE R10
IP RATING	IP68 / IP69K
SALT SPRAY TEST	ISO 9227 (1000H)
EMC PROTECTION	CISPR-25 (CLASS 3)
OPERATING CONDITIONS	
SHOCK	TBC
VIBRATION (BS EN 60068-2-64)	10HZ > 1000HZ, 0.14>20 (M/S ²)/HZ
OPERATING TEMPERATURE	-40°C ... +90°C
DIMENSIONS	
WIDTH	110 MM
DEPTH	85 MM
HEIGHT	108 MM
PHOTOMETRIC DATA	
1 LX LINE	79 M
5 LX LINE	47 M
20 LX LINE	27 M
50 LX LINE	19 M†

†50Lx represents HSE guidelines for effective illumination when working outdoors at night.
**LED manufacturers specification.

FIND OUT MORE



**HIGH PERFORMANCE
LED WORK LAMPS**

UTILITY 80HD

NEW

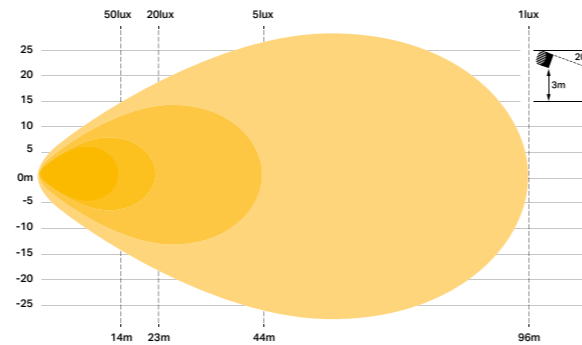


LENS COVERS (UTILITY-80 HD)

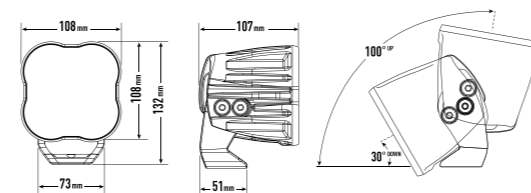
- LC-RP-YLW Amber lens cover with embossed Lazer logos.
- LC-RP-CLR Reeded lens cover with embossed Lazer logos.
- LC-RP-BLK Black lens cover with a printed Lazer logo.

Specifically designed and engineered for the rigorous demands of industrial applications including: mining, construction, forestry, and agriculture. Comprising 4x premium-bin 20W LEDs, the Utility-80 HD emits 8,940 raw lumens harnessed through the ultra-reflective, vacuum-metallised optics redesigned to give even better distribution of light over a greater area. A version with variable brightness function is also available.

PHOTOMETRIC DATA



DIMENSIONS (MM)



PRODUCT FEATURES

- ECE approved work light
- Utilising 4 high-density 20W LEDs
- Variable brightness option available
- CAE optimised cooling system with Electronic Thermal Management
- 5000k colour temperature
- Vacuum-metallised optics for superior light utilisation
- Die-cast, heavy-duty mounting bracket made from 7mm stainless steel
- 'Unbreakable' polycarbonate lens with hardcoat
- Automotive grade corrosion resistance
- EMC protected – CISPR:25 (Class 3)
- IP68 / IP69k approved
- Over voltage protected
- Reverse polarity protected
- Includes male/female Deutsch connectors
- Comprehensive range of lens covers available
- 5-year warranty
- Designed and manufactured in UK

TECHNICAL SPECIFICATIONS

VOLTAGE RANGE (DC)	10-32V
LED LIFE	50,000 HOURS**
COLOUR TEMPERATURE	5,000 KELVIN
WEIGHT	1100 G
HIGH BEAM FUNCTION	
TOTAL LUMINOUS FLUX	8940 LM
COLOUR TEMPERATURE	5000K
NUMBER OF HIGH OUTPUT LEDs	4
POWER CONSUMPTION	80 WATTS
CURRENT DRAW (AT 14.4V)	5.6 AMPS
CERTIFICATION	
WORK LAMP	ECE R10
IP RATING	IP68 / IP69K
SALT SPRAY TEST	ISO 9227 (2000H)
EMC PROTECTION	CISPR-25 (CLASS 3)
OPERATING CONDITIONS	
VIBRATION (BS EN 60068-2-64)	10HZ > 1000HZ, 0.14>20 (M/S ²)/HZ
OPERATING TEMPERATURE	-40°C ... +90°C
DIMENSIONS	
WIDTH	107 MM
DEPTH	108 MM
HEIGHT	107 MM
PHOTOMETRIC DATA	
1 LX LINE	96 M
5 LX LINE	44 M
20 LX LINE	23 M
50 LX LINE	14 M [†]

[†]50Lx represents HSE guidelines for effective illumination when working outdoors at night.
 **LED manufacturers specification.

FIND OUT MORE



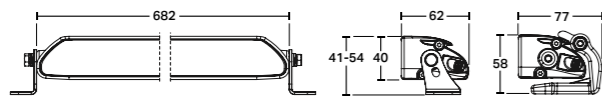
HIGH PERFORMANCE LED WORK LAMPS

LINEAR 24 FLOOD

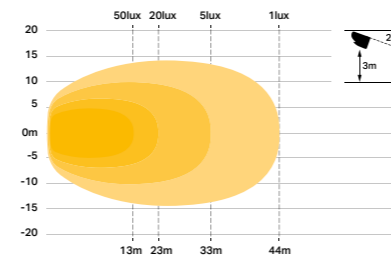
Designed and engineered specifically for industrial sectors, the Linear-24 Flood challenges conventional work light solutions, offering outstanding lighting performance optimised for heavy machinery. Like all Lazer products built in the UK, the light boasts exceptional durability and reliability, even in the harshest environments, alongside high operational safety.



DIMENSIONS (MM)



PHOTOMETRIC DATA



PRODUCT FEATURES

- High output work light for industrial applications
- Utilises the latest, highly efficient LED technology
- Customised arrangement of vacuum-metallised optics delivers 'zonal' lighting
- Light output optimised for exceptional levels of illumination in immediate (<20m) working environment
- Colour temperature – 5000 kelvin
- Supplied with stainless steel, side mounting brackets
- Electronic thermal management
- 'Unbreakable' polycarbonate lens
- IP68 watertight
- 5-year warranty
- Supplied with male/female 2-pin Deutsch connectors
- Designed & manufactured in Britain

TECHNICAL SPECIFICATIONS

VOLTAGE RANGE (DC)	10-32V
LED LIFE	50,000 HOURS**
COLOUR TEMPERATURE	5,000 KELVIN
WEIGHT	1500 G
HIGH BEAM FUNCTION	
TOTAL LUMINOUS FLUX	16200 LM
COLOUR TEMPERATURE	5000K
NUMBER OF HIGH OUTPUT LEDS	48
POWER CONSUMPTION	168 WATTS
CURRENT DRAW (AT 14.4V)	11.7 AMPS
CERTIFICATION	
WORK LAMP	ECE R10
IP RATING	IP68
SALT SPRAY TEST	ISO 9227 (2000H)
EMC PROTECTION	CISPR-25: (CLASS 3)
OPERATING CONDITIONS	
VIBRATION (BS EN 60068)	10HZ-2000HZ, 10GN
OPERATING TEMPERATURE	-40°C ... +90°C
DIMENSIONS	
WIDTH	682 MM
DEPTH	62MM
HEIGHT	40 MM
PHOTOMETRIC DATA	
1 LX LINE	44 M
5 LX LINE	33M
20 LX LINE	23 M
50 LX LINE	18 M†

†50Lx represents HSE guidelines for effective illumination when working outdoors at night.
**LED manufacturers specification.

FIND OUT MORE



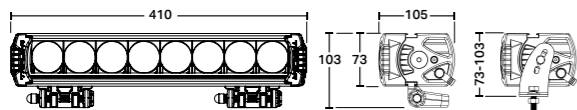
**HIGH PERFORMANCE
LED WORK LAMPS**

TRIPLE-R 1000 BEACON

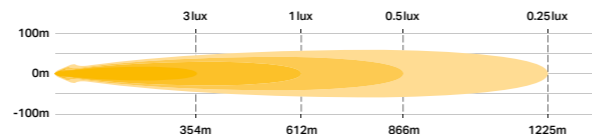
The iconic Triple-R 1000 is offered with integrated amber flashing beacon function. Incorporating 16 different forward-facing flash patterns, the additional safety functionality within the lamp, combines with the possibility to connect a white or amber position /side light function, as well as the exceptional high beam driving light function to really set the Triple-R 1000 apart from the competition.



DIMENSIONS (MM)



PHOTOMETRIC DATA



PRODUCT FEATURES

- Highly efficient 11W LED technology
- 5000K LED colour temperature and 80CRI maximises sharpness and definition
- Integrated amber flashing beacon function – 16 flash patterns (incl UNECE Reg65 option)
- Integrated white and amber position light function
- Ultra-reflective vacuum-metallised optics deliver spot beam pattern
- UNECE Reg 112 Class B Driving Light, approved for on-road high beam (E-Boost technology) and Reg 7 position/side light function (white only)
- Contemporary lamp design – Black or White options
- Electronic thermal management system optimises light output to preserve longevity of the LEDs
- Anodised pre-treatment and automotive grade powder top-coat for ultimate corrosion and chemical protection
- CAE optimised heatsink for improved thermal dynamics
- Over voltage protected
- Reverse polarity protected
- 'Unbreakable' polycarbonate lens with hardcoat lacquer
- UNECE approved Reg 10
- IP68 watertight
- 5-year warranty
- Pre-wired male / female 6-pin Superseal connectors
- Designed & manufactured in UK

TECHNICAL SPECIFICATIONS

VOLTAGE RANGE (DC)	10-32V
LED LIFE	50,000 HOURS**
COLOUR TEMPERATURE	5,000 KELVIN
WEIGHT	1700 G
HIGH BEAM FUNCTION	
TOTAL LUMINOUS FLUX	9240 LM
COLOUR TEMPERATURE	5000K
NUMBER OF HIGH OUTPUT LEDs	8
POWER CONSUMPTION	88 WATTS
CURRENT DRAW (AT 14.4V)	6.1 AMPS
CERTIFICATION	
HIGH BEAM	ECE R112
E-MARK REF	12.5
POSITION LIGHT	ECE R7
BEACON	ECE R65
OPERATING CONDITIONS	
VIBRATION (BS EN 60068)	10HZ-2000HZ, 10GN
OPERATING TEMPERATURE	-40°C ... +90°C
DIMENSIONS	
WIDTH	410 MM
DEPTH	105 MM
HEIGHT	73 MM
PHOTOMETRIC DATA	
0.25 LX LINE	1225 M (E-BOOST)
0.5 LX LINE	866 M (E-BOOST)
1 LX LINE	612 M (E-BOOST)
3 LX LINE	354 M (E-BOOST)

*Driver FOV flux is a measure of effective lumens taking consideration of the amount of light in a driver's 'field-of-view' defined as an area +/- 45° left/right, and +/- 10° up/down.
**LED manufacturers specification.

FIND OUT MORE



HIGH PERFORMANCE LED WORK LAMPS

LED DRIVING LIGHTS

In addition to our extensive range of work lights, Lazers' lighting product range also includes both road-legal and off-road LED driving lights.

The selection comprises the Linear, representing the ultimate in low-profile auxiliary LED lighting. The comprehensive Triple-R range incorporates boost optics to offer unparalleled long-range visibility. Our Sentinel series features 9" and 7" round lamps, while the ST and T Evolution lights provide a 'flood' beam pattern especially well-suited to rural road and off-road applications. To learn more, please visit lazerlamps.com.



FIND OUT MORE



VEHICLE INTEGRATION KITS

Transform your vehicle's appearance and upgrade your driving experience with Lazer's bespoke grille integration kits!

These kits not only enhance the aesthetic appeal of your vehicle but also improve driving safety and comfort. They provide a sophisticated look and exceptional lighting performance, making navigation through low-light or nighttime conditions a breeze. With quick and easy mounting, you can complete the installation in as little as 20 minutes, giving you more time to enjoy the stunning results. To learn more, please visit lazerlamps.com and click on Integration Kits.



FIND OUT MORE



CONTACT

PRODUCT DETAIL

Have complete confidence in your Lazer Lamps purchase before you buy. On our websites you'll find detailed product information and specifications, including: photometric diagrams, photographs, and videos (including driver's POV night footage) to allow you to make well-informed decisions about the solutions which are perfect for you.

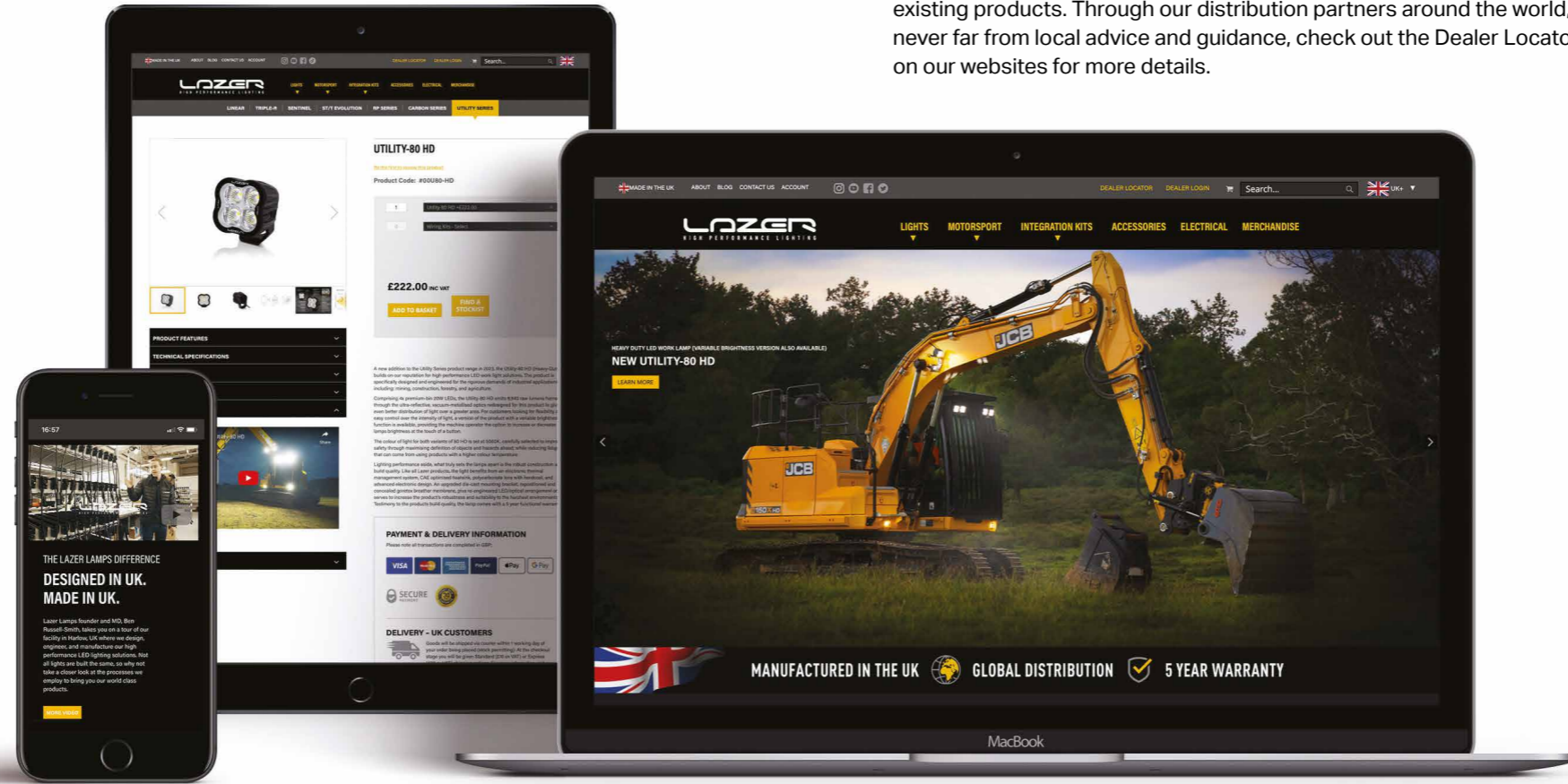
LAZER LAMPS ONLINE

Aside from our website, Lazer Lamps online presence means you're never far from more media, reviews, insights, or inspiration. Our YouTube channel is packed full of instructional how-to videos and product showcases, while our social media channels provide regular updates on both new and existing products. Through our distribution partners around the world, you're never far from local advice and guidance, check out the Dealer Locator on our websites for more details.

SEE MORE.
WORK
SAFER.

IN THE SPOTLIGHT

Want to find out more about the latest technology, advice on installations, or the specific activities of Lazer Lamps or our partners, check out the Blog section of our website – we're sure you'll find it enlightening!



LAZER
HIGH PERFORMANCE LIGHTING

HEAD OFFICE

Lazer Lamps Ltd
Calder House
Central Road
Harlow
Essex
CM20 2ST
United Kingdom

Tel +44 (0) 1992 677374
sales@lazerlamps.com

AUSTRALIA OFFICE

Lazer Lamps Pty Ltd
283-287 Sir Donald Bradman Drive
Suite 43 Dancorp
Brooklyn Park
5032
South Australia

Tel +61 870 9284444
sales@lazerlamps.com.au

US OFFICE

Triple-R Lights LLC
16192 Coastal Highway
Lewes
Delaware
DE 19968
USA

Tel +1 302 415 3324
sales@triple-r-lights.com

    @lazerlamps

LAZERLAMPS.COM

FIND OUT MORE





**SEE MORE
WORK SAFER**

LAZERLAMPS.COM





LAZER
HIGH PERFORMANCE LIGHTING

LAZERLAMPS.COM

All content included in this brochure (including, but not limited to, logos, images, photos, designs, graphics and text) is the property of Lazer Lamps Ltd and as such is protected by UK and international copyright and other intellectual property laws.

©2024 Lazer Lamps Ltd. All rights reserved.