

CONSERVATION & GAMECOVER CROPS



**WELCOME TO YOUR 2024
LG CONSERVATION
AND GAMECOVER
CROPS BROCHURE**

The launch of the Sustainable Farming Incentive will allow a greater choice of environmental options for your farm. Some of the options are already available through Countryside Stewardship, however there are some new options, such as:

- Multispecies Winter Cover Crops
- Herbal Leys
- Companion Crops
- Legumes on Improved grassland

These additional options will allow extra flexibility, so you can choose a combination of standalone 'pick and mix' actions alongside Countryside Stewardship on either the same area of land or a different area in the same land parcel.

For further information about the SFI please visit: www.gov.uk/defra/sustainablefarmingincentive

We look forward to continuing to provide you with high quality seeds for the benefit of wildlife and your farm.

The LG team

**LIMAGRAIN
PLANT BREEDING**

As a major international plant breeding company, Limagrain can utilise its breeding programmes to evaluate and commercialise seed products suitable for conservation.

Our maize breeding programme ensures that HiBird maize blends continue to include the very best varieties. They are always tested in the UK for yield, early vigour and standing ability and it's only when a variety has proven itself, that it will be included in the HiBird mixtures.

You will find many of the products that appear in this brochure are bred by Limagrain. There are ongoing breeding programmes currently developing new varieties of the following species:

- Kale
- Rape kale hybrids
- Maize
- Sunflowers
- Cereals
- Oilseeds



**HABITATS
FOR WILDLIFE**

Crop options for farmland birds, pollinators and grass margin habitats

Creating the perfect habitat is vitally important and will enable future generations to know that we played our part in securing our wildlife and plant populations. The start of this process begins by investing in the right seeds mixture that will allow you to deliver environmental benefits to the highest level. All LG seeds contained in this brochure have been fully tested for germination and purity enabling your crop to establish quickly and realise its potential.

CONTENTS

HABITATS FOR WILDLIFE	01 - 13	WILDFLOWERS	14- 16
CROPS TO FEED BIRDS	06 - 07	GAME & WILDLIFE MANAGEMENT	17 - 27
CROPS FOR POLLINATORS AND SOIL HEALTH	08 - 09	OTHER USEFUL CROPS	28 - 30
GRASS FIELD MARGINS	10 - 11	COLOUR SPLASH FLOWERS	31
LEGUME AND HERBAL MIXTURES	12	SOWING AND COVER GUIDE	32
COVER AND COMPANION CROPS	13	CONTACTS	33



ENGLAND



Sustainable Farming Incentive (SFI)

SFI is the new scheme that rewards farmers for farming practices that help produce food sustainably and protect the environment. It currently comprises of 23 land-based actions that can be categorised into eight different areas:

- Actions for soils
- Actions for moorland
- Actions for hedgerows
- Actions for integrated pest management
- Actions for nutrient management
- Actions for farmland wildlife
- Actions for buffer strips
- Actions for low input grassland

The table on pages 4-5 gives details of which of our seed mixtures are suitable for each action, together with the payment rate for each action.

Countryside Stewardship (CS)

In 2024 CS is made up of 8 grants designed to provide financial incentives for farmers, foresters and land managers to look after and improve the environment.

These grants include Mid Tier grants and Wildlife Offers which aim to improve:

- Diversity of wildlife
- Water quality
- Air quality
- Natural flood management

Application for these grants closed in September 2023 for new agreements starting in 2024. Growers will need to sow land entered into the scheme this year with appropriate seed mixtures for new or existing agreements.



SCOTLAND



Agri-Environment Climate Scheme (AECS)

The AECS promotes land management practices which protect and enhance Scotland's magnificent natural heritage, improve water quality, manage flood risk and mitigate and adapt to climate change.

The scheme has been extended and has an application round for 2024. It includes a range of options for farmers including:

- Wild bird seed for farmland birds
- Forage brassica crops for farmland birds
- Stubbles followed by green manure in an arable rotation
- Beetlebanks
- Grass strips in arable fields
- Water margins in arable fields

Further details can be found on the Scottish rural payment's website www.ruralpayments.org

WALES



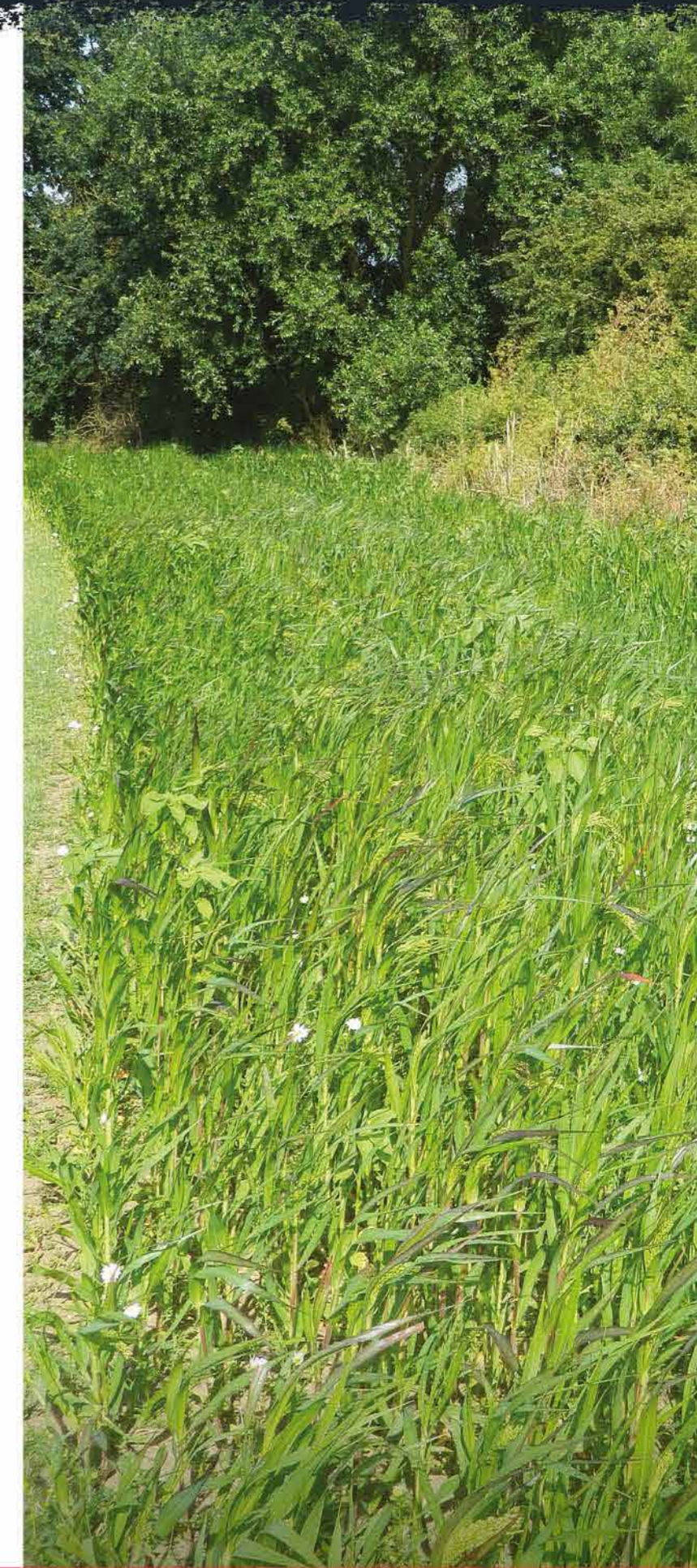
Glastir, Habitat Wales and the Sustainable Farming Scheme (SFS)

The Glastir scheme came to an end at the end of 2023 and is replaced by an interim scheme called Habitat Wales which will provide support to farmers up until the planned introduction of SFS in 2025.

The aims of the Habitat Wales scheme is to protect habitat land previously under management in 2023, introduce additional habitat land and maintain environmental support for common land.

More information can be found on the Welsh rural grants and payments website

www.gov.wales/rural-grants-payments





CODE	SFI ACTION	ANNUAL PAYMENT	WILD BIRD SEED MIXTURES									CROPS FOR POLLINATORS AND SOIL HEALTH				GRASS FIELD MARGINS		LEGUME AND HERBAL MIXTURES					COVER AND COMPANION CROPS		EQUIVALENT CSS CODE		
			BIRDFEEDER	2 WBF	JACK RUSSELL	LINNET	BUNTING	PARTRIDGE HABITAT	SETTER	MAGNET	BUMBLEBIRD	LEGUME 2	LEGUME 2 GF	FLOWER RICH MARGIN	BEE MIX	BASIC HABITAT	BEEBLE BANK	MULTISPECIES 60	MULTISPECIES 25	MULTISPECIES 10	CLOVERPLUS PELLETTED	LG GRASS & CLOVER MIX	UNDER/OVER MAIZE MIX	LIFT N FIX			
PAGE NUMBER >			7	7	7	6	6	24	25	6	6	9	9	9	8	10	11	12	12	12	12		13	12			
Actions for soils	SAM2	Multi-species winter cover crops	£129/Ha																					✓	✓	✓	SW5, SW6
	SAM3	Herbal Leys	£382/Ha														✓	✓	✓								GS4
Actions for integrated pest management	IPM2	Flower-rich grass margins, blocks, or in-field strips	£798/Ha																								AB8
	IPM3	Companion crop on arable and horticultural land	£55/Ha																						✓	✓	N/A
Actions for nutrient management	NUM2	Legumes on improved grassland	£102/Ha											✓				✓	✓	✓	✓	✓					N/A
	NUM3	Legume fallow	£593/Ha											✓	✓												AB15
Actions for farmland wildlife on arable and horticultural land	AHL1	Pollen and nectar flower mix	£739/Ha																								AB1
	AHL2	Winter bird food on arable and horticultural land	£853/Ha	✓	✓	✓	✓	✓	✓	✓	✓	✓	✓														AB9
	AHL3	Grassy field corners and blocks	£590/Ha																					✓	✓		SW3
Actions for wildlife on improved grassland	IGL2	Winter bird food on improved grassland	£515/Ha																						✓		GS3
Actions for buffer strips	AHL4	4m to 12m grass buffer strip on arable and horticultural land	£515/Ha																						✓		SW1
	IGL3	4m to 12m grass buffer strip on improved grassland	£235/Ha																						✓		SW2

Every care has been taken to ensure scheme details and payment rates are correct at time of writing. However this guide is not a substitute for the official rules and regulations associated with the schemes in operation.



Farmland Birds

The provision of important food resources for farmland birds is vital in the autumn and winter months and more specifically in the hungry gap period between winter and spring.



Jack Russell

- Fantastic feed source for one year
- Herbicide tolerant
- Inclusion of dwarf sorghum gives structure and winter hardiness
- Seed shed from early Autumn
- Derogation is required before spraying

Mixture Formulation

- Spring Triticale
- Millet blend
- Fodder radish
- Dwarf sorghum
- Dwarf sunflower
- Linseed

Supplied in 20 kilo 0.5 hectare units

WHY SELECT THIS CROP?

A herbicide tolerant mixture with fantastic colour



STOMP AQUA TOLERANT

1 YEAR

SFI Action AHL2

Seed Mixtures for Specific Farmland Birds

Limagrain has been working with a variety of different agencies to produce a range of seed mixtures specifically to feed some of the UK's favourite birds.

We also have a Partridge Habitat mixture that can be found on page 24.

Linnet

- Produces an abundance of small seeds
- Also suitable for tree sparrows and grey partridges

Contains: kale, oilseed rape, red millet, white millet, linseed, mustard and fodder radish

Supplied in 20 kilo 0.5 hectare units



1 YEAR

SFI Action AHL2

Bunting

- Cereal based mixture
- Seed use from September to February
- Also suitable for tree sparrow, yellow hammer and skylarks

Contains: Triticale, spring wheat, spring barley, quinoa, red millet, white millet and fodder radish.

Supplied in 20 kilo 0.5 hectare units



1 YEAR

SFI Action AHL2

Seed Mixtures for Autumn Sowing

Bumblebird Mixture

- Abundant supply of small seeds during the winter
- Pollen and nectar source from early to late summer

Contains: Winter triticale, winter wheat, fodder radish, crimson clover, birdsfoot trefoil, red clover, kale, common vetch, alsike clover, linseed and phacelia

Supplied in 20 kilo 0.5 hectare units



1 YEAR

SFI Action AHL2

Magnet

- Fantastic brood rearing cover in spring
- Seed shed from late summer onwards

Contains: Forage rape, mustard, linseed, fodder radish, phacelia and triticale

Supplied in 15 kilo 0.5 hectare units



1 YEAR

SFI Action AHL2

Bird Feeder

- A combination of small seed-bearing crops
- Excellent feed potential
- Wide range of use from wild birds
- Good spread of seed shedding dates
- The ultimate bird feeder!
- Spring sown with 2 year potential

Mixture Formulation

- Kale
- Dwarf sunflower
- Linseed
- Fodder radish
- Mustard
- Millet blend

Supplied in 12.5 kilo 0.5 hectare units

WHY SELECT THIS CROP?

Ideal mixture to provide a succession of food for farmland birds



2 YEAR

SFI Action AHL2

2 WBF (2 Year Winter Bird Food)

- A combination of small seed-bearing crops
- Succession of feed sources
- Triticale and quinoa provide excellent feed for both wild birds and reared game
- Ideally sown on field margins and headlands
- Spring sown with 2 year potential

Mixture Formulation

- Spring Triticale
- Quinoa
- Forage rape
- Kale
- Linseed
- Fodder radish

Supplied in 20 kilo 0.5 hectare units

WHY SELECT THIS CROP?

A great mixture to provide a succession of food for 2 years



2 YEAR

SFI Action AHL2



Crops to Support Pollinators

The seed mixtures here will provide fantastic areas of flowering plants to help boost the essential food sources for beneficial pollinators, such as bumblebees, solitary bees and butterflies, as well as hover flies.

Crops to Improve Soil Health

As well as providing food for pollinators, some of these mixtures also include high levels of legumes which fix atmospheric nitrogen, helping to manage nutrient efficiency and improve soil health.



Bee Mixture

- A blend created to attract and maintain bumblebee populations
- Phacelia acts as a prolific flowering nurse crop whilst the red clover and sainfoin establish
- The phacelia will produce a fantastic display of purple flowers that bees will love
- You will be able to hear the mixture buzz!

Mixture Formulation

- Phacelia
- Birdsfoot trefoil
- Sainfoin
- Alsike clover
- Vetch
- Oxeye daisy
- Wild carrot
- Red clover

Supplied in 7.5 kilo 0.5 hectare units



SFI Action
AHL1



Flower Rich Margin

- Ideal for field margins and buffers
- The mixture contains a blend of 80% grasses and 20% native wildflowers
- Once established it will be a perfect habitat for bees and butterflies
- The area can be mown in the first year to help tillering

Mixture Formulation

Grasses

- Browntop bent
- Chewings fescue
- Crested dogstail
- Sheeps fescue
- Slender creeping red fescue
- Smooth stalked meadow grass
- Strong creeping red fescue

Wildflowers

- Agrimony
- Birdsfoot trefoil
- Knapweed
- Black medick
- Kidney vetch
- Oxeye daisy
- Ladys bedstraw

- Salad burnet
- Wild carrot
- Yarrow
- Red clover
- Ribwort plantain
- Sainfoin
- St Johns wort
- White campion

Supplied in 10 kilo 0.5 hectare units

Legume 2

- Legume fallow mix lasting two years or more
- Provides food for farmland wildlife, such as pollinators
- If used in the rotation, it will help reduce blackgrass flowering and contaminating arable rotations
- Contains 66% ryegrass, 34% legumes

Mixture Formulation

- Red clover
- Alsike clover
- Common vetch
- Lucerne
- Sainfoin
- Perennial ryegrass
- Birdsfoot trefoil

Supplied in 10 kilo 0.5 hectare units

Legume 2 Grass Free

- A version of Legume 2 with no grass
- 100% legumes means high nitrogen fixation
- Can be used as a rotational break crop
- Contains quick establishing annuals and longer lasting perennial species

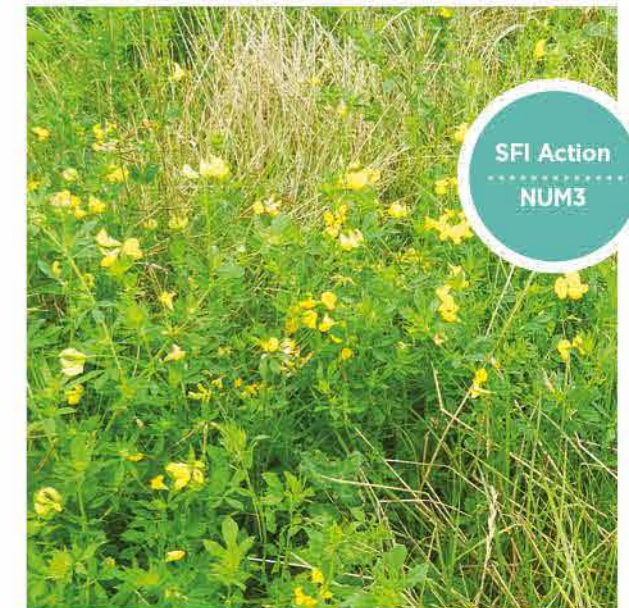
Mixture Formulation

- Red clover
- Alsike clover
- Common vetch
- Lucerne
- Crimson clover
- Birdsfoot trefoil

Supplied in 10 kilo 0.5 hectare units



SFI Action
IPM2



SFI Action
NUM3



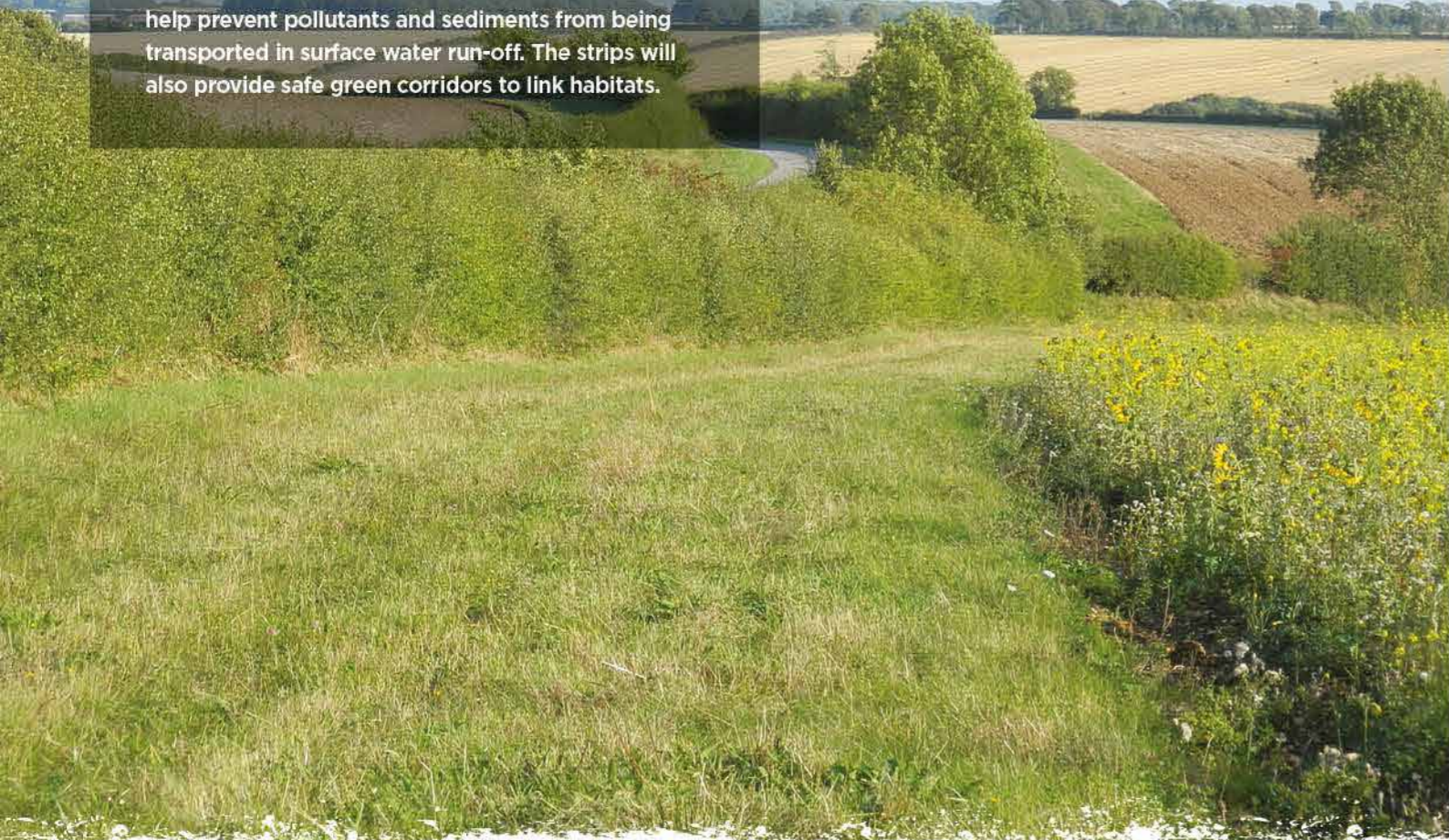
1 YEAR

SFI Action
NUM3

Grass Buffers, Margins, Corners and Blocks

The establishment of permanent grass buffer strips and blocks will produce new habitats, protect existing landscape features and improve water quality.

If used next to watercourses, buffers and margins can help prevent pollutants and sediments from being transported in surface water run-off. The strips will also provide safe green corridors to link habitats.



Basic Habitat

- Ideally suited for either 2, 4 or 6 metre buffer strips
- Contains grasses that are the food plants of several butterflies and insects
- Once established, the mixture can help protect habitats from sprays and fertiliser applications
- Sow in spring or autumn

Mixture Formulation

- Chewings fescue
- Bent grass
- Smooth stalked meadow grass
- Timothy
- Tall fescue
- Meadow fescue
- Red fescue

Supplied in 10 kilo 0.5 hectare units



SFI Action
AHL3, AHL4,
IGL3

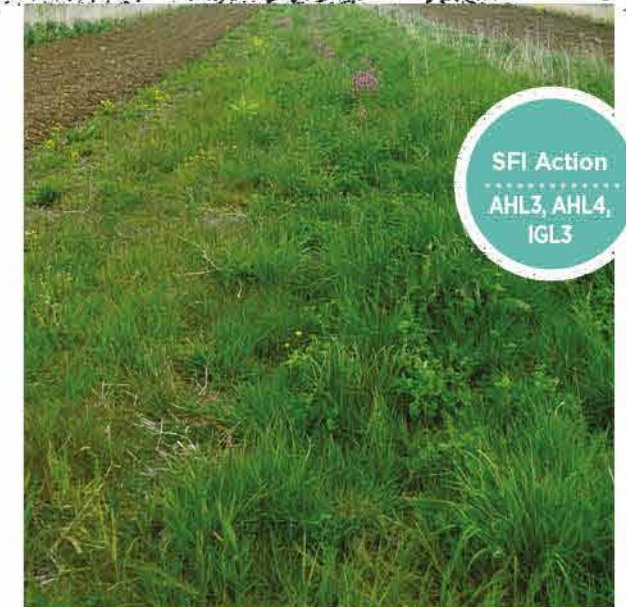
Beetle Bank

- Ideal for the creation of 2 metre tussocky grass ridges
- Beetle banks should run from one side of an arable field to the other for maximum benefits
- You may need to cut the grass several times during the first summer to aid establishment
- Provides a good, green corridor for animal movement

Mixture Formulation

- Chewings fescue
- Timothy
- Sheeps fescue
- Cocksfoot
- Meadow fescue
- Smooth stalked meadow grass

Supplied in 10 kilo 0.5 hectare units



SFI Action
AHL3, AHL4,
IGL3

MARGIN & BUFFER STRIP SOWING CALCULATOR

HOW MUCH SEED WILL I NEED?

PRODUCT	PACK SIZE	SOWING RATE PER HECTARE	LENGTH OF FIELD MARGIN ONE UNIT WILL SOW		
			2m	4m	6m
Basic Habitat	10 kilos	20 kilos	2500m	1250m	833m
Beetle Bank	10 kilos	20 kilos	2500m	1250m	833m

Flowering grasses can produce a range of food for butterflies. It is often thought that food is only provided by flowers, but the chart below shows which grass species provide food for different UK butterflies

BUTTERFLY FOOD CHART

PLANT SPECIES	BUTTERFLY							
	GATEKEEPER	MEADOW BROWN	COMMON BLUE	SKIPPERS	RINGLET	SMALL HEALTH	GRAYLING	MABLE WHITE
Agrostis spp	🦋	🦋				🦋		
Birdsfoot trefoil			🦋	🦋				
Cocksfoot		🦋		🦋	🦋			
Meadow grass	🦋	🦋			🦋	🦋		
Sheeps fescue							🦋	🦋
Timothy				🦋				



LEGUME AND HERB MIXTURES

Creating more diverse grasslands brings multiple benefits to soils and wildlife, as well as offering production benefits.

The varied root structure and nitrogen fixation of herbal leys and legumes help to improve soil structure and fertility, as well as building soil organic matter.

These mixtures provide more flowers for pollinators than a standard grass sward, whilst also having increased protein and mineral content for grazing livestock.



COVER AND COMPANION CROPS

Establishing a cover crop over the winter months helps minimise nutrient leaching and erosion, whilst also benefiting soil structure and biology.

There are many ways of companion cropping with a range of benefits. Companion crops can act as a trap crop for pests, help suppress weeds, protect soils and increase nutrient efficiency as well as provide improved habitat for wildlife.



Multispecies 60

- A scientifically formulated mixture containing 60% legumes and herbs, and 40% grasses
- Balances high levels of production for livestock with all of the benefits associated with herbal leys
- Provides varied root structures
- Contains the necessary species to meet SAM3 voluntary guidance



SFI Action SAM3, NUM3

Mixture Formulation

Grasses

- Perennial ryegrass
- Meadow fescue
- Timothy
- Festulolium
- Tall Fescue

Legumes

- Red clover
- White clover
- Alsike clover
- Birdsfoot trefoil

Herbs/Wildflowers

- Sainfoin
- Chicory
- Plantain
- Yarrow
- Burnett

Supplied in 20 kilo bags

Sow at 25-32 kilos per ha

Multispecies 25

A version of Multispecies mixture with 25% legumes and herbs, and 75% grasses. Contains all of the same species as Multispecies 60 and meets SAM3 voluntary guidance.

SFI Action SAM3, NUM3

Supplied in 20 kilo bags

Sow at 25-32 kilos per ha

Multispecies 10

An economy version of Multispecies mixture with 10% legumes and herbs, and 90% grasses. Contains all of the same species as Multispecies 60.

SFI Action SAM3, NUM3

Supplied in 20 kilo bags

Sow at 25-32 kilos per ha

Overseeding Mixtures

Legume & Herb Mix

- A mixture designed to convert existing grass into a multispecies ley by overseeding
- Contains the same species of herbs and legumes as Multispecies 60
- Varied root depths improve soil structure and health
- Contains the necessary species to meet SAM3 voluntary guidance if existing grass comprises of 5 species or more



SFI Action SAM3

Mixture Formulation

Legumes

- Red clover
- White clover
- Alsike clover
- Birdsfoot trefoil

Herbs/Wildflowers

- Sainfoin
- Chicory
- Plantain
- Yarrow
- Burnett

Supplied in 5 kilo bags

Over sow at 12.5 kilos per ha

CloverPlus®

A pelleted clover blend perfect for adding clover into an existing grass mixture. Increased seed size and weight means easier equipment calibration. Provides improved seed to soil contact and better establishment.

Supplied in 5 kilo bags

Sow at 5 kilos per ha

SFI Action NUM2

Lift N Fix

- A mix of 80% fast growing Humbolt forage rye and 20% vetch
- Forage rye lifts and holds nitrogen preventing leaching, whilst forming a dense cover
- Vetch fixes nitrogen ready for the subsequent crop
- Perfect for sowing after maize harvest



Sow at 70-80 kilos per ha

Green Reward

- A multispecies cover crop mixture with different rooting depths to help relieve compaction
- Contains Humbolt rye, black oats, fodder radish, tillage radish, mustard and phacelia
- Contains species with fibrous and deep tap roots for greater soil conditioning
- Ideal mixture to follow cereal harvest



Sow at 40-50 kilos per ha

Soil Improver

- A general use multispecies cover crop mixture
- Contains winter oats, fodder radish, mustard and phacelia
- Fast to establish and high organic matter production
- Provides a great habitat for both small and game birds over winter



Sow at 40-50 kilos per ha

Undersowing Maize

Growing a crop of maize means sowing in April/May and harvesting in September/October leaving a period of six months where there's an opportunity to gain extra production.

Using an early maturing variety may allow time after harvest to sow a cover mixture, like Lift N Fix, or the maize crop can be undersown with grass as a companion crop.

Undersowing with grass helps prevent erosion and soil structure damage and can offer valuable grazing over the winter and following spring.

LG Under Maize

- A mix of tall fescue and festulolium designed for sowing at time of maize drilling
- Uses drought resistant species to ensure survival under the maize canopy
- Relatively slow growing mixture to prevent competition that could lead to maize yield loss
- Very dense root structure stabilises ground to reduce soil structure damage at harvest

Sow at 8 kilos per ha

LG Over Maize

- A mix of Italian ryegrass and festulolium designed for sowing at 6 leaf stage of maize
- More vigorous growth to aid establishment
- Drill 15cm away from maize rows to avoid any detrimental yield effects
- Very fast to grow after maize harvest to provide excellent ground cover and useful spring grazing

Sow at 15 kilos per ha



Mixture Composition

We have carefully formulated our wildflower mixtures to suit a number of different habitats and soil types. This can range from a sandy soil to a hedgerow habitat. Low maintenance grass species (see panel below) are included in the mixtures to act as a nurse crop in the early years of establishment and growth. The grasses help suppress weed invasion, whilst allowing the wildflowers to flourish.

All our Wildflower mixtures contain 80% grasses and 20% native British produced wildflowers

80% Grasses

Browntop bent	<i>Agrostis capillaris</i>
Chewings fescue	<i>Festuca rubra commutata</i>
Crested dogstail	<i>Cynosurus cristatus</i>
Sheep's fescue	<i>Festuca ovina</i>
Slender creeping red fescue	<i>Festuca rubra litoralis</i>
Smooth stalked meadow grass	<i>Poa pratensis</i>
Strong creeping red fescue	<i>Festuca rubra rubra</i>

Wildflower Management Guidelines

Select a weed-free site of low fertility. Fertiliser should not be used, since broad-leaved and grass weeds, together with cultivated grasses contained in standard mixtures, can be highly competitive on fertile soils. This can adversely affect seed germination, establishment and subsequent growth. However, increased grass cutting can help to counteract over-competitive growth.

Control weeds before sowing. Annual weeds may be hoed, buried or killed with a contact herbicide. Perennial weeds should be eradicated by a translocated glyphosate-based herbicide. Sow mixtures either from early March to early May, or from early August to mid-September. This will ensure optimum establishment of most species.

Cultivate the ground to provide a fine, weed-free seed bed. Firm if necessary. Take care to sow evenly, at the recommended rate. Thoroughly mixing one part seed with four parts dry sand makes it more easily distributed. Rake the seed in lightly with a spring-tined rake and firm the soil by treading or, preferably, rolling. This ensures that the seed comes into contact with moisture in the soil.

Water with a fine spray. This will avoid disturbing the surface of the soil. Keep the area well-watered and free from any unwanted plants.

Cut the sward every six to eight weeks during the first year after sowing and remove the cuttings. This will prevent the grass from over growing the slower growing wildflowers.

In the following years, cut in early spring, before growth starts, and in October, after all wildflower seeds have been shed. Remove the cuttings.

Wildflower Sowing Guide

J	F	M	A	M	J	J	A	S	O	N	D
•	•	•	•	•	•	•	•	•	•	•	•
• Sowing possible						• Optimum sowing window					



LG 1 Woodland and Heavy Shade

- A carefully selected mixture suitable for shaded areas and woodlands
- Sowing rate 3-5g/m²
- Pack size 1 kilo



Betony
Stachys officinalis

Bluebell
Hyacinthoides non-scripta

Foxglove
Digitalis purpurea

Garlic Mustard
Alliaria petiolata

Hedge Bedstraw
Galium mollugo

Hedge Woundwort
Stachys sylvatica

Nettle-Leaved Bellflower
Campanula trachelium

Red Campion
Silene dioica

Self Heal
Prunella vulgaris

Wild Angelica
Angelica sylvestris

Wood Avens
Geum urbanum

Wood Sage
Teucrium scorodonia



LG 2 Wetland and Water Meadow

- Suitable for damp, moist and wet soils including saturated banks of ponds, streams, rivers and ditches
- Sowing rate 3-5g/m²
- Pack size 1 kilo



Betony
Stachys officinalis

Greater Birdsfoot Trefoil
Lotus uliginosus

Common Knapweed
Centaurea nigra

Meadow Buttercup
Ranunculus acris

Meadowsweet
Filipendula ulmaria

Oxeye Daisy
Leucanthemum vulgare

Purple Loosestrife
Lythrum salicaria

Ragged Robin
Lychnis flos-cuculi

Red Campion
Silene dioica

Self Heal
Prunella vulgaris

Sneezewort
Achillea ptarmica

Water Avens
Geum rivale



LG 3 Limestone Mix

- On soils overlying limestone or chalk, particular types of flowers can be found, and these are contained in this carefully selected blend of species
- Sowing rate 3-5g/m²
- Pack size 1 kilo



Agrimony
Agrimonia eupatoria

Betony
Stachys officinalis

Black Medick
Medicago lupulina

Common Birdsfoot Trefoil
Lotus corniculatus

Knapweed
Centaurea nigra

Cowslip
Primula veris

Dandelion
Taraxacum officinale

Field Scabious
Knautia arvensis

Greater Knapweed
Centaurea scabiosa

Hoary Plantain
Plantago media

Kidney Vetch
Anthyllis vulneraria

Oxeye Daisy
Leucanthemum vulgare

Salad Burnet
Sanguisorba minor

Self Heal
Prunella vulgaris

Wild Basil
Clinopodium vulgare

Wild Carrot
Daucus carota

Wild Mignonette
Reseda lutea

Yarrow
Achillea millefolium

Yellow Rattle
Rhinanthus minor



LG 4 Clay and Heavy Soils

- This mixture can be sown on all clay soils and uses species typically found on this soil type
- Sowing rate 3-5g/m²
- Pack size 1 kilo



Birdsfoot Trefoil
Lotus corniculatus

Bulbous Buttercup
Ranunculus bulbosus

Common Vetch
Vicia sativa

Knapweed
Centaurea nigra

Lady's Bedstraw
Galium verum

Lesser Trefoil
Trifolium dubium

Oxeye Daisy
Leucanthemum vulgare

Salad Burnet
Sanguisorba minor

Self Heal
Prunella vulgaris

Teasel
Dipsacus fullonum

Wild Carrot
Daucus carota

Wild Carrot
Daucus carota

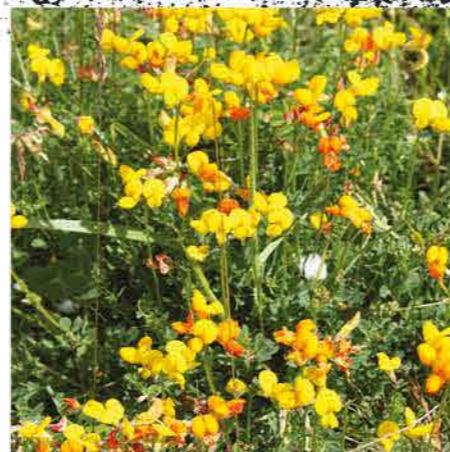


LG 5 Acid Soils Mix

- The flowers selected in this mixture naturally occur on soils characterised by a low pH, which allows you to produce a flowery sward on a range of acid soils
- Sowing rate 3-5g/m²
- Pack size 1 kilo



Common Birdsfoot Trefoil <i>Lotus corniculatus</i>	Devil's-Bit Scabious <i>Succisa pratensis</i>	Ragged Robin <i>Lychnis flos-cuculi</i>
Common Knapweed <i>Centaurea nigra</i>	Lady's Bedstraw <i>Galium verum</i>	Self Heal <i>Prunella vulgaris</i>
Common Sorrel <i>Rumex acetosella</i>	Meadow Buttercup <i>Ranunculus acris</i>	White Campion <i>Silene alba</i>
Common Toadflax <i>Linaria vulgaris</i>	Musk Mallow <i>Malva moschata</i>	Wild Basil <i>Clinopodium vulgare</i>
Common Vetch <i>Vicia sativa</i>	Oxeye Daisy <i>Leucanthemum vulgare</i>	Yellow Rattle <i>Rhinanthus minor</i>
Dandelion <i>Taraxacum officinale</i>	St John's-Wort <i>Hypericum perforatum</i>	



LG 6 General Purpose/Loam Soils

- This mixture is suitable for establishing flowery grassland on all loam/alluvial type soils and can produce a rich, diverse sward
- Sowing rate 3-5g/m²
- Pack size 1 kilo



Betony <i>Stachys officinalis</i>	Lady's Bedstraw <i>Galium verum</i>
Common Birdsfoot Trefoil <i>Lotus corniculatus</i>	Oxeye Daisy <i>Leucanthemum vulgare</i>
Bulbous Buttercup <i>Ranunculus bulbosus</i>	Salad Burnet <i>Sanguisorba minor</i>
Catsear <i>Hypochaeris radicata</i>	Self Heal <i>Prunella vulgaris</i>
Cowslip <i>Primula veris</i>	White Campion <i>Silene latifolia</i>
Common Knapweed <i>Centaurea nigra</i>	



LG 7 Hedgerow and Semi Shade

- Suitable for field and woodland margins
- Sowing rate 3-5g/m²
- Pack size 1 kilo



Betony <i>Stachys officinalis</i>	Red Campion <i>Silene dioica</i>
Common Knapweed <i>Centaurea nigra</i>	Self Heal <i>Prunella vulgaris</i>
Garlic Mustard <i>Alliaria petiolata</i>	Teasel <i>Dipsacus fullonum</i>
Hairy St John's-Wort <i>Hypericum hirsutum</i>	Wood Avens <i>Geum urbanum</i>
Hedge Bedstraw <i>Galium mollugo</i>	Yarrow <i>Achillea millefolium</i>
Hedge Woundwort <i>Stachys sylvatica</i>	



LG 8 Sandy/Dry Soils Mix

- On free draining sandy soils, we advise the use of this mixture to recreate a meadow typical for this soil type
- Sowing rate 3-5g/m²
- Pack size 1 kilo



Black Medick <i>Medicago lupulina</i>	Lady's Bedstraw <i>Galium verum</i>	Self Heal <i>Prunella vulgaris</i>
Birdsfoot Trefoil <i>Lotus corniculatus</i>	Musk Mallow <i>Malva moschata</i>	Viper's Bugloss <i>Echium vulgare</i>
Knapweed <i>Centaurea nigra</i>	Oxeye Daisy <i>Leucanthemum vulgare</i>	White Campion <i>Silene alba</i>
Dandelion <i>Taraxacum officinale</i>	Perforate St John's-Wort <i>Hypericum perforatum</i>	Wild Carrot <i>Daucus carota</i>
Field Forget-Me-Not <i>Myosotis arvensis</i>	Ribwort Plantain <i>Plantago lanceolata</i>	Wild Mignonette <i>Reseda luteola</i>
Hoary Plantain <i>Plantago media</i>		Yarrow <i>Achillea millefolium</i>
Kidney Vetch <i>Anthyllis vulneraria</i>		Yellow Rattle <i>Rhinanthus minor</i>



Crops for Game & Wildlife Management

Crop options for winter holding, brood rearing and game drives

Cover crops can provide additional drives, autumn and winter feed as well as fantastic environmental benefits for wildlife. Over the last few years, we've seen an increase in the use of multispecies seed mixtures, some of which are herbicide tolerant, and will provide a more diverse habitat than single sown species.

Hibird maize blend

- Our best selling gamecover maize
- All varieties selected for good early vigour and standing ability
- A medium maturing variety
- FAO maturity class 180
- Different crop heights allow for easier bird access
- Robust, providing full season feed
- Laboratory tested for germination
- Seed is treated with Korit for bird protection

CROP HEIGHT 180-200cm
Packed in 50,000 seed units

WHY SELECT THIS CROP? Medium height ideal for most soils and situations



Straight game maize

- Medium/late variety
- Good standing ability for full season use
- Laboratory tested for germination
- Large cobs and enhanced feed value
- Seed is treated with Korit for bird protection

CROP HEIGHT 190-210 cm
Packed in 50,000 seed units

WHY SELECT THIS CROP? Large cobs provide additional feed value combined with excellent cover



Maize for Gamecover

Maize for gamecover can sometimes be troublesome, especially if you are following maize after maize in the rotation. Some other crop options to consider are:

- Jack Russell seeds mixture, see page 7 – great season long cover, stomp aqua tolerant and eligible for SFI action AHL2
- Brassica break from Maize, see page 25 Cocker mixture
- Rats and badgers a problem? see page 19 (opposite) for medium height intermediate sorghum



Dwarf Shorty

- Ideal for driving and winter cover
- Can make excellent flushing points within maize
- Excellent replacement for kale
- Adds warmth to maize crops when sown adjacent
- Weed control possible
- Not suitable for Northern England or Scotland

CROP HEIGHT 90-100cm

Supplied in 12.5 kilo 0.5 hectare units

WHY SELECT THIS CROP? Low crop canopy provides warmth and security, making Shorty the ultimate driving crop



Intermediate DP2

- Ideal replacement for maize
- Makes excellent controlled driving cover
- Herbicide use possible
- Similar height to maize
- Best sown in June

CROP HEIGHT 120-150cm

Supplied in 12.5 kilo 0.5 hectare units

WHY SELECT THIS CROP? If rats and badgers are a problem, Intermediate can provide a similar height to maize crops without the cob!



Giant Jumbo Star

- Tall, dense cover ideally used for a windbreak around maize
- Good vigour and fast growth
- Later drilled crops will have reduced height potential
- Crops can screen guns allowing them to get in position without disturbing the birds

CROP HEIGHT 200-220cm

Supplied in 12.5 kilo 0.5 hectare units

WHY SELECT THIS CROP? Jumbo Star can be sown later than other sorghums, just watch it grow!

Caledonian

- The first kale bred with clubroot tolerance
- A taller kale allowing for easier bird access
- Winter hardy
- Excellent germination and vigour potential
- British bred, reliable and trusted
- Seed available with Start-uP® nutrient package
- Sow at 5 kilos per hectare

CROP HEIGHT 90-100cm

Supplied in 5 kilo 1 hectare units

WHY SELECT THIS CROP?

Why run the risk of crop failure? Caledonian comes with clubroot tolerance



Keeper

- A shorter variety with excellent lodging resistance
- Excellent leaf canopy with a bare floor
- High leaf to stem ratio
- British bred and fully tested for germination and vigour to ensure maximum establishment
- Winter hardy
- Seed available with Start-uP® nutrient package
- Sow at 5 kilos per hectare

CROP HEIGHT 80-90cm

Supplied in 5 kilo 1 hectare units

WHY SELECT THIS CROP?

A high leaf to stem ratio ensures maximum cover and protection for your birds



START-UP® SEED TREATMENT

START-UP ADVANCED SEED TREATMENT TO PROMOTE EARLY ROOT DEVELOPMENT

Start-uP® consists of a unique combination of soluble nutrients and bio-active compounds. It contains a highly mobile form of phosphorus known as phosphite – a molecule which can move through the major transport routes of the plant (the xylem and phloem) much faster than conventional phosphate fertiliser.

Combined with a naturally derived bio active complex to promote **rapid early root development and maintain overall plant health**, Start-uP® is able to provide a readily available source of **essential nutrients** and other beneficial compounds precisely when and where they are most needed by the plant.



Carbon (Kale x Mustard)

- Excellent cover produced in a short period of time
- Best sown in June or July
- Excellent cover by November
- Frost tolerant
- Ideal for new sowings or for patching existing areas
- Can be sown into cereal stubble
- Seed is treated with Start-uP® nutrient package
- Sow at 4 kilos per hectare

CROP HEIGHT 60-100cm

Supplied in 2 kilo 0.5 hectare units

WHY SELECT THIS CROP?

Fantastic dry cover produced in a short period of time



Interval (Rape/Kale hybrid)

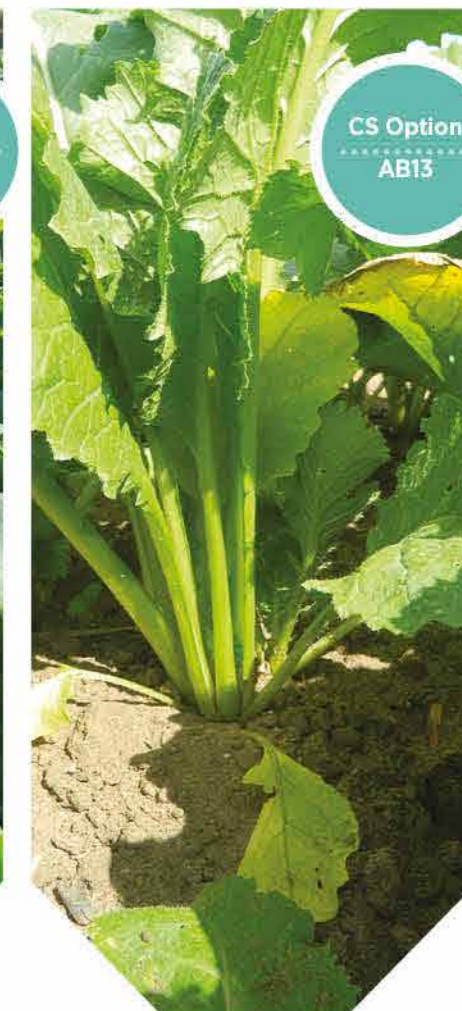
- Fantastic fast growing rape with kale parentage
- Excellent establishment and early vigour
- Ideal replacement for kale when sown in June or July
- Winter hardy, full season cover
- Can be used as a pioneer or rescue crop
- Seed available with Start-uP® nutrient package
- Sow at 5 kilos per hectare

CROP HEIGHT 50-100cm

Supplied in 5 kilo 1 hectare units

WHY SELECT THIS CROP?

Crop failed or left it late? Interval is the ultimate fast growing cover provider.



Skyfall (Bounce Back Brassica)

- Fast growing and leafy
- Late sown option for June to August
- Large leaves for extra cover
- Can be successfully grazed after use
- Can be sown into cereal stubble
- Seed is treated with Start-uP® nutrient package
- Sow at 5 kilos per hectare

CROP HEIGHT 30-40cm

Supplied in 2.5 kilo 0.5 hectare units

WHY SELECT THIS CROP?

Late sown cover provider, ideal for partridges



Magic Millet

- Dense reed millet
- Ideal for use alongside maize
- Windproof and warming
- Good flushing point
- Also contains red and white millet for feed value
- Winter hardy

CROP HEIGHT 100-120cm

Supplied in 10 kilo 1 hectare unit

WHY SELECT THIS CROP?

Winter hardy millet for later use



Top Flush Millet

- A carefully blended mixture of red, panorama and white millets
- Mixture ensures a wider window of seed shed
- Feed value from September to December
- Provides an excellent feed block if sown adjacent to maize
- Can be cross drilled or broadcast in maize crops to add feed value and warmth

CROP HEIGHT 80-100cm

Supplied in 10 kilo 1 hectare units

WHY SELECT THIS CROP?

Feeding birds can be expensive, why not grow your own feed and reduce your costs?



Proso White Millet

- This high yielding variety will provide huge seed yields
- Ideal for use with maize crops
- Can be used as a feeding block or flushing point
- Sow at 10-15 kilos per hectare

CROP HEIGHT 80-100cm

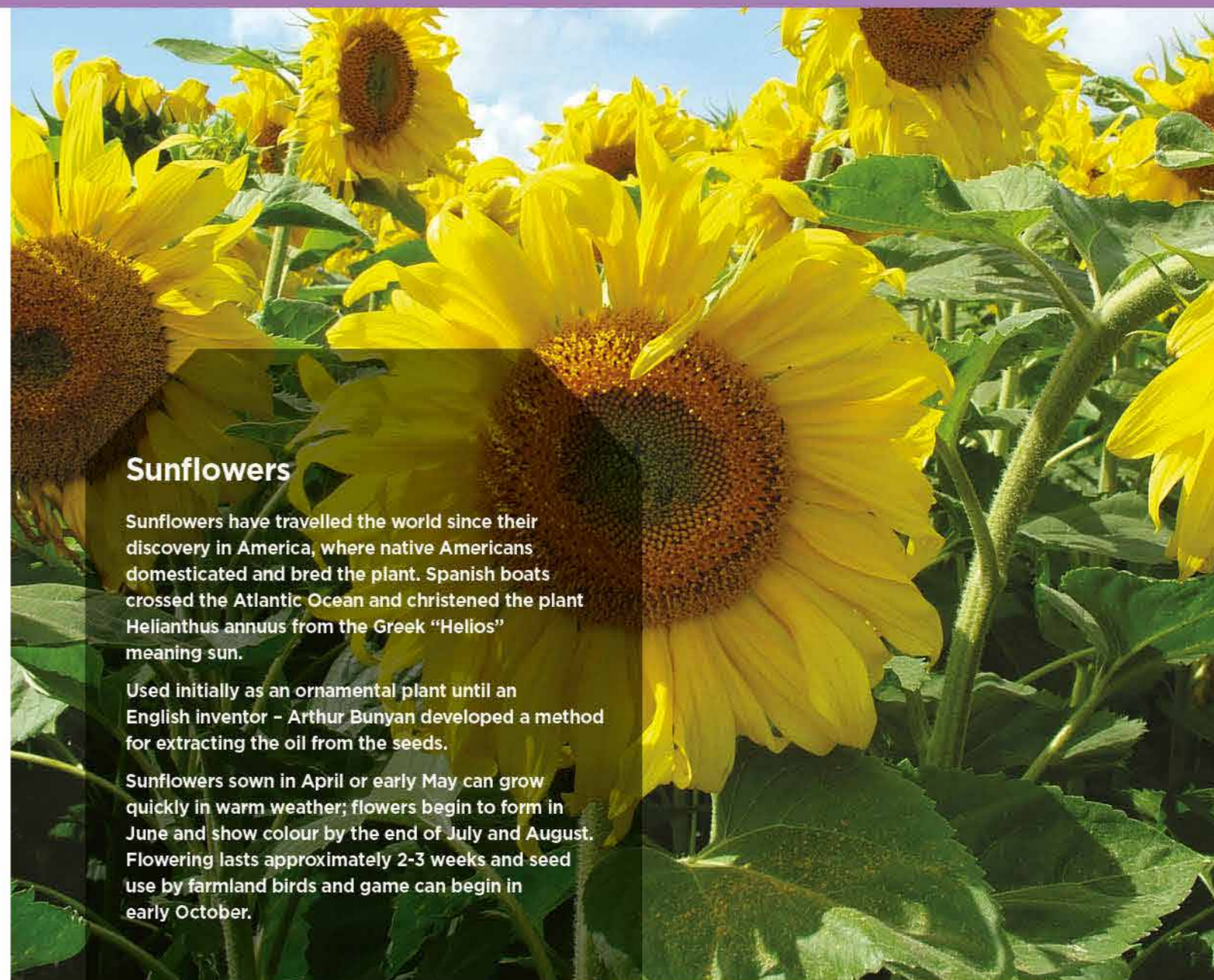
Supplied in 25 kilo 2 hectare units

We can also supply:

- Red Millet

WHY SELECT THIS CROP?

Huge seed yields will provide additional feed and prevent birds from roaming



Sunflowers

Sunflowers have travelled the world since their discovery in America, where native Americans domesticated and bred the plant. Spanish boats crossed the Atlantic Ocean and christened the plant *Helianthus annuus* from the Greek "Helios" meaning sun.

Used initially as an ornamental plant until an English inventor - Arthur Bunyan developed a method for extracting the oil from the seeds.

Sunflowers sown in April or early May can grow quickly in warm weather; flowers begin to form in June and show colour by the end of July and August. Flowering lasts approximately 2-3 weeks and seed use by farmland birds and game can begin in early October.

Sunspot

- Large, attractive flowers
- Excellent seed production
- Good standing ability
- Used by finches and game birds
- From Limagrains' plant breeding programme

CROP HEIGHT 130-150cm

Supplied in 12.5 kilo 1 hectare units

WHY SELECT THIS CROP?

Excellent autumn feed source for game & farmland birds





STOMP AQUA TOLERANT

SFI Action
.....
AHL2



STOMP AQUA TOLERANT



BUTISAN 'S' TOLERANT

Jack Russell

- Fantastic feed source for one year
- Herbicide tolerant
- Inclusion of dwarf sorghum gives structure and winter hardiness
- Seed shed from early autumn
- Derogation is required before spraying

CROP HEIGHT 150-200cm

Mixture Formulation

- Spring Triticale
- Dwarf sorghum
- Millet blend
- Dwarf sunflower
- Fodder radish
- Linseed

Supplied in 20 kilo 0.5 hectare units

Golden Retriever

- Stomp Aqua tolerant
- Excellent full season cover combined with seed shed potential
- Ideal driving cover for pheasants or partridges
- Winter holding potential
- Attractive to wild birds as well!

CROP HEIGHT 200-220cm

Mixture Formulation

- Dwarf sorghum
- Dwarf sunflowers
- Millet blend
- Fodder radish

Supplied in 12.5 kilo 0.5 hectare units

Cocker

- Butisan 'S' tolerant
- If weed control is your priority, this is the mixture for you!
- Full season cover for 2 years
- Derogation is required before spraying

CROP HEIGHT 80-90cm

Mixture Formulation

- Caledonian kale
- Mustard
- Fodder radish
- Linseed

Supplied in 8 kilo 0.5 hectare units



1 YEAR

SFI Action
.....
AHL2



2 YEAR

SFI Action
.....
AHL2



2 YEAR

Partridge Habitat

- A brand new mixture
- Formulated specifically to offer feed and habitat for Grey Partridge
- High seed yield provides food source through the winter
- Interval rape/kale hybrid offers quick establishment and excellent cover through the whole winter

CROP HEIGHT 150-200cm

Mixture Formulation

- Spring Triticale
- Interval rape/Kale hybrid
- Spring barley
- Mustard
- Linseed
- Quinoa

Supplied in 20 kilo 0.5 hectare units

Setter

- Two year, full season cover and feed
- Traditional mixture using a wide range of species
- Excellent seed shed from September onwards
- Fantastic for insect use
- Perfect winter holding cover
- Fully tried and tested

CROP HEIGHT 150-200cm

Mixture Formulation

- Mustard
- Dwarf sunflower
- Buckwheat
- Phacelia
- Linseed
- Reed millet
- Kale
- White millet

Supplied in 12.5 kilo 0.5 hectare units

Labrador

- Two year full season cover and feed
- Ideal for use in cooler, more exposed areas
- Triticale cereal helps prevent rabbit damage
- Brood rearing potential

CROP HEIGHT 100cm

Mixture Formulation

- Spring Triticale
- Linseed
- Mustard
- Quinoa
- Kale

Supplied in 20 kilo 0.5 hectare units

WHY SELECT THIS CROP?

To help prevent the decline in grey partridges

WHY SELECT THIS CROP?

Setter will provide you with cover and feed throughout a two year period

WHY SELECT THIS CROP?

Labrador will tolerate low pH and difficult soil types

Spaniel

- Summer sown drought tolerant cover mixture
- Can be broadcast into cereal stubble
- Useful for patching areas where drought or flea beetle damage has occurred
- Fodder radish retains its seeds late into the season
- More winter hardy than mustard

CROP HEIGHT 80-100cm

Mixture Formulation

- Carbon
- Interval rape/kale
- Mustard
- Fodder radish

Supplied in 5 kilo 0.5 hectare units

WHY SELECT THIS CROP?

If your crop has failed or established poorly, this fast growing recovery mixture can save the day!



Interval (Rape/Kale hybrid)

- Fantastic fast growing rape with kale parentage
- Excellent establishment and early vigour
- Ideal replacement for kale when sown in June or July
- Winter hardy, full season cover
- Can be used also as a pioneer or rescue crop

CROP HEIGHT 50-100cm

Supplied in 5 kilo 1 hectare units

WHY SELECT THIS CROP?

Crop failed or left it late? Interval is the ultimate fast growing cover provider



Carbon (Kale x Mustard)

- Excellent cover produced in a short period of time
- Best sown in June or July
- Excellent cover by November
- Frost tolerant
- Ideal for new sowings or for patching existing areas
- Can be sown into cereal stubble
- Seed is treated with Start-up® nutrient package

CROP HEIGHT 60-100cm

Supplied in 2 kilo 0.5 hectare units

WHY SELECT THIS CROP?

Fantastic dry cover produced in a short time



Canary Grass (Phalaris Aquatica)

- Perennial cover
- Will grow on poor soils and exposed areas
- Second year growth can reach 2 metres
- It takes two years to become fully established
- Driving or nesting cover

**CROP HEIGHT 50-60cm (first year)
150cm (subsequent years)**

Supplied in 3 kilo 0.5 hectare units

WHY SELECT THIS CROP?

Perennial habitat lasting 3-4 years



Reed Canary Grass (Phalaris Arundinacea)

- Tall perennial cover
- Driving and nesting cover potential
- A UK native species
- Can be sown on difficult soil types
- Produces stolons and creeps
- Sow in 30" wide rows

**CROP HEIGHT 50-60cm (first year)
150cm (subsequent years)**

Supplied in 3 kilo 0.5 hectare units

WHY SELECT THIS CROP?

Wood or hedgeroad perennial cover



Chicory

- Perennial chicory
- Spring sown
- Excellent driving cover in second year
- Deep rooted
- Drought tolerant
- Best mixed with other species in first year

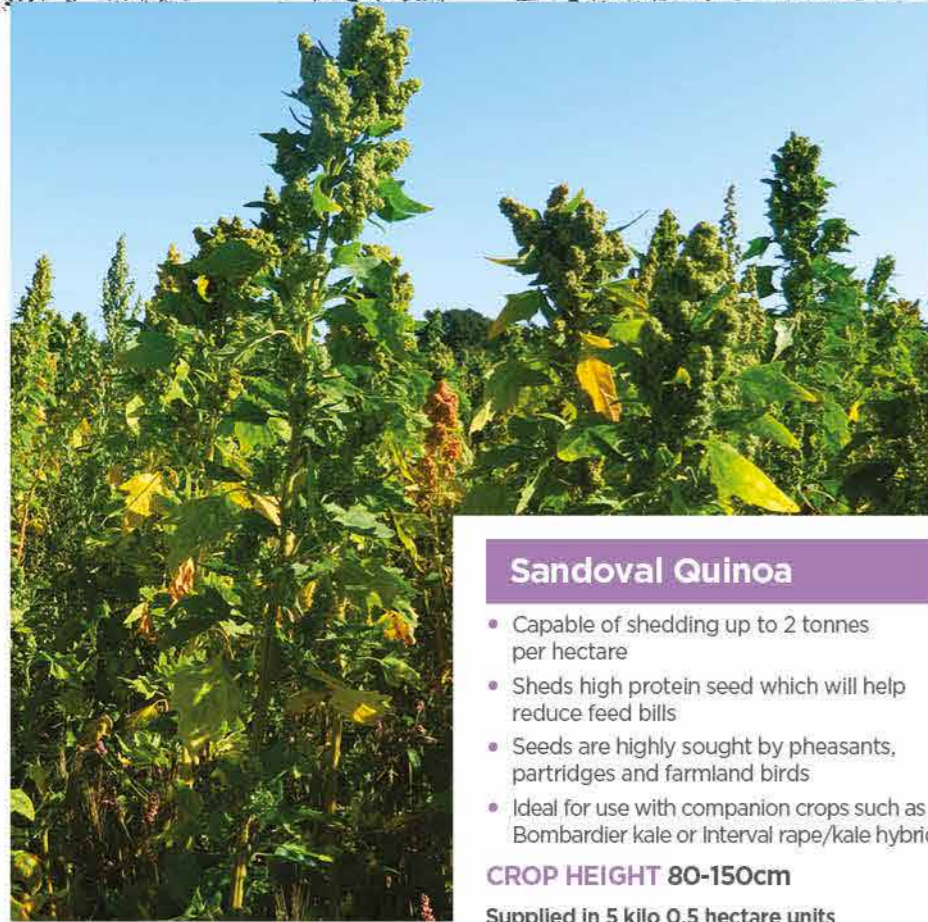
**CROP HEIGHT 30-40cm (first year)
150-200cm (subsequent years)**

Supplied in 3 kilo 0.5 hectare units

WHY SELECT THIS CROP?

Tall, spectacular cover





Sandoval Quinoa

- Capable of shedding up to 2 tonnes per hectare
- Sheds high protein seed which will help reduce feed bills
- Seeds are highly sought by pheasants, partridges and farmland birds
- Ideal for use with companion crops such as Bombardier kale or Interval rape/kale hybrid

CROP HEIGHT 80-150cm

Supplied in 5 kilo 0.5 hectare units



Brown Mustard (*Brassica Juncea*)

- Fast growing
- Excellent biomass production
- Grows taller than white mustard
- Ability to help suppress certain soil borne nematodes

CROP HEIGHT 90-100 cm

Sow at 10 kilos per hectare



Buckwheat

- Thick, bushy seed producing plant
- Seed shed occurs in early autumn
- Very fast establishment with some weed smothering properties
- Can be used adjacent to flight ponds to attract ducks and geese
- Can be sown in woodland glades
- Sown at 50 kilos per hectare

CROP HEIGHT 70-120cm

Supplied in 10 kilo or 25 kilo units



Linseed

- Very fast establishment
- Tolerates a wide range of soil types
- Broken canopy is very attractive to partridges
- Autumn seed shed produces a palatable feed
- Sown at 60 kilos per hectare

CROP HEIGHT 60-70cm

Supplied in 25 kilo units



Sweet Clover

- A nectar producing biennial clover
- Thrives on neutral and calcareous soils
- Ability to fix "free nitrogen"
- Second year growth can reach 1-2 metres in height
- Best sown in conjunction with kale or canary grass

CROP HEIGHT 85-150cm

Supplied in 5 kilo 0.5 hectare units



Fodder Radish

- Very fast growth
- Good weed suppressant
- Seeds are used by wild birds late into winter
- Can be used for biomass green manure
- Sown at 20 kilos per hectare

CROP HEIGHT 60-80cm

Supplied in 5 kilo or 20 kilo units



Phacelia

- Extremely fast growing catch crop
- Brilliant pretty blue flowers attract huge numbers of insects
- Pollen and nectar provider
- Competes well with weeds
- Care should be taken in following crops, as phacelia can reseed itself readily

CROP HEIGHT 30-60cm

Supplied in 5 kilo 1 hectare units



Texcel Greens

- Summer sown cover crop
- Better winter hardiness than white mustard
- Ideal for use on areas where spring sown cover has failed
- Sown at 5 kilos per hectare

CROP HEIGHT 40-70cm

Supplied in 1 kilo units



Mustard

- Fast establishment and drought tolerant cover
- Ideal summer sown catch crop
- Broadcast or drill into cereal stubble
- Resilient to rabbit damage because of its rapid establishment
- Drill at 10 kilos per hectare

CROP HEIGHT 30-100cm

Supplied in 10 kilo or 20 kilo units

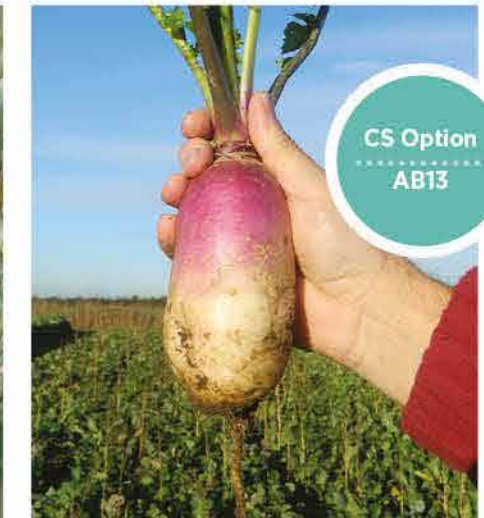


Spring Triticale

- The best cereal crop for gamecover situations
- Spring sown
- Increased seed head emergence and feed value
- Will tolerate poorer soils with low pH levels
- Resilient to rabbit damage
- Seed heads should remain late into the winter months
- Sow at 125 kilos per hectare

CROP HEIGHT 90-100cm

Supplied in 25 kilo units



Stubble Turnip

- A very fast-growing cover provider
- Ready to utilise in 12 weeks from sowing
- Tankard shaped varieties like Samson grow out of the ground and therefore hold their leaves higher for improved canopy
- Ideal for sowing in the summer and autumn (less weed pressure)
- Can be grazed by sheep afterwards

CROP HEIGHT 80-100cm

Supplied in 5 kilos 1 hectare units

CS Option
AB13

Estate Grass Mixture

- Ideal for producing release pen areas
- Amenity grasses produce a good dense floor
- Hardwearing
- Ideal for birds to dry off and feed
- Can be left uncut to produce taller cover
- Estate can grow in shaded areas

Mixture Formulation

- Amenity perennial ryegrass
- Creeping red fescue

Supplied in 20 kilo units

WHY SELECT THIS CROP?

Great for professional release pen areas



Beetle Bank

- Ideal for the creation of 2 metre tussocky grass ridges
- Beetle banks should run from one side of an arable field to the other for maximum benefits
- You may need to cut the grass several times during the first summer to aid establishment
- Good green corridor for animal movement

Mixture Formulation

- Chewings fescue
- Timothy
- Sheeps fescue
- Cocksfoot
- Meadow fescue
- Smooth stalked meadow grass

Supplied in 10 kilo 0.5 hectare units

WHY SELECT THIS CROP?

Great habitat for insects and small mammals



These products are cultivated flowers and are not suitable for environmental schemes. They will however provide pollen and nectar in amenity settings.

Festival

- Tall growing mixture, 1m - 1.5m, ideal for adding a splash of colour to any dull area
- Contains new varieties, such as Sunbow Zinnia, which provides several waves of flowers over a longer time period
- Good ground cover and a source of insects and wildlife
- Appropriate mixture for dry land

Floral Arrangement:

Annuals, 5 flowers

Sowing: April - May, 2g/m²

Germination: 8-10 days in the correct conditions

Flowering: Mid-June to mid-November



Aurora

- Medium height mixture, around half a metre tall
- New varieties; Sunbow Zinnia and Trianon Cosmos provide more effective and long-lasting flowering
- Ideal for soil with more organic material and nutritive mineral elements

Floral Arrangement:

Annuals, 5 flowers

Sowing: April - May, 2g/m²

Germination: 8-10 days in the correct conditions

Flowering: from mid-June to early November



Colour Splash
PACKAGING
OPTIONS:
400 gram
or 4kg bag

Honey Bee

- Tall growing mixture, around 1m to 1.5m
- Composed of flowering plants for landscaping which will attract insects
- Perfect mix for attracting pollinating insects, and honey bees. You'll create a real buzz
- Yellow Cosmos, Godetia and Black Eyed Susan are included in the mixture

Floral Arrangement:

Annuals, 11 flowers

Sowing: April - June 2g/m²

Germination: 8-10 days in the correct conditions

Flowering: Mid-June to mid-October





USE	PRODUCT	PACK SIZE	SOWING RATE (per hectare)	SOWING DATE	CROP DURATION (years)
ENVIRONMENTAL SEED MIXTURES					
Pollinators	Flower Rich Margin	10 kg 0.5 ha	20 kg	April-Sept	5
Pollinators	Bee Mixture	7.5kg 0.5 ha	15 kg	April-Sept	5
Pollinators	Legume 2	10 kg 0.5 ha	20 kg	April-Aug	5
Pollinators	Multispecies Ley	25 kg 1 ha	25 kg	April-Aug	5
Grass Margin	Basic Habitat	10 kg 0.5 ha	20 kg	April-Sept	5
Grass Margin	Beetle Bank	10 kg 0.5 ha	20 kg	April-Sept	5
Wild Bird Seed Mix	2 WBF	20 kg 0.5 ha	40 kg	April-June	2
Wild Bird Seed Mix	Bumblebird	20 kg 0.5 ha	40 kg	June-Sept	2
Wild Bird Seed Mix	Bird Feeder	12.5 kg 0.5 ha	25 kg	April-June	2
Wild Bird Seed Mix	Jack Russell	20 kg 0.5 ha	40 kg	April-June	1
Wild Bird Seed Mix	Linnet	20 kg 0.5 ha	40 kg	April-June	1
Wild Bird Seed Mix	Bunting	20 kg 0.5 ha	40 kg	April-June	1
Wild Bird Seed Mix	Magnet	15 kg 0.5 ha	30 kg	June-Sept	1
GAMECOVER AND CONSERVATION MIXTURES					
Winter Holding	Setter	12.5 kg 0.5 ha	25 kg	April-June	2
Winter Holding	Labrador	20 kg 0.5 ha	40 kg	April-June	2
Winter Holding	Partridge Habitat	20 kg 0.5 ha	40 kg	April-June	1
Driving Cover	Cocker	8 kg 0.5 ha	16 kg	April-June	2
Driving Cover	Golden Retriever	12.5 kg 0.5 ha	25 kg	May-June	1
GAMECOVER AND CONSERVATION CROPS					
Driving Cover	Maize	50,000 seeds 0.5 ha	100,000 seeds	April-June	1
Driving Cover	Sorghum	12.5 kg 0.5 ha	25 kg	May-June	1
Driving Cover	Kale	5 kg 1 ha	5 kg	April-June	2
Seed Provider	Top Flush Millet	10 kg 1 ha	10 kg	April-June	1
Driving Cover	Magic Millet	10 kg 1 ha	10 kg	April-June	1
Seed Provider	Dwarf Sunflower	12.5 kg 1 ha	12.5 kg	April-May	1
Seed Provider	Quinoa	5 kg 0.5 ha	10 kg	April-May	1
Seed Provider	Buckwheat	25 kg 0.5 ha	50 kg	April-May	1
Seed Provider	Triticale (spring)	25 kg 0.2 ha	125 kg	March-April	1
PERENNIAL SOLUTIONS					
Driving Cover	Canary Grass	3 kg 0.5 ha	6 kg	April-June	3-4
Driving Cover	Chicory	3 kg 0.5 ha	6 kg	May-June	3
SUMMER/AUTUMN SOWN					
Recovery	Spaniel	5 kg 0.5 ha	10 kg	June-Aug	1
Fast Growing and Recovery	Mustard	10 kg 1 ha	10 kg	May-Sept	1
Pollinators	Phacelia	5 kg 1 ha	5 kg	April-Aug	1
Recovery	Carbon	2 kg 0.5 ha	4 kg	June-Aug	1
Recovery	Interval	5 kg 1 ha	5 kg	June-Aug	1
Fast Growing and Recovery	Skyfall	2.5 kg 0.5 ha	5 kg	May-Aug	1

Notes



TERMS & CONDITIONS OF SALE

All varieties and products listed in this catalogue are offered strictly subject to safe harvest, final certification and remaining unsold on receipt of orders. All other terms & conditions of sale will be advised by your individual distributor or stockist.

Version 2024



Beckii Gibbs
Commercial Manager
T 01380 729200
M 07736 930191
E beckii@unitedoilseeds.co.uk



Jo Gunes
Business Manager
T 01380 732319
M 07502 315331
E jo@hubbardsseeds.co.uk

Local Support

Area Manager contact details



1 Beckii Gibbs
T 01380 729200
M 07736 930191
E beckii@unitedoilseeds.co.uk



5 Peter Collier
M 07389 836880
E peter@unitedoilseeds.co.uk



9 James Hood
T 01603 270511
M 07836 755454
E james@unitedoilseeds.co.uk



2 Andrew Milne
T 01573 223809
M 07917 224252
E andrewm@unitedoilseeds.co.uk



6 Rebecca Beesley
T 01747 870680
M 07501 987360
E rebeccab@unitedoilseeds.co.uk



10 Aaron Cantrill
M 07770 797154
E aaronc@unitedoilseeds.co.uk



3 Ray Pennock
T 01642 762340
M 07710 647047
E ray@unitedoilseeds.co.uk



7 Ed Chudley
M 07785 717769
E edc@unitedoilseeds.co.uk



4 Lucy Jackson
M 07500 017355
E lucy@unitedoilseeds.co.uk



8 Holly Gourley
M 07469 240034
E holly@unitedoilseeds.co.uk

