

AgBot 5.115T2

Technical Specifications



Drive train

Deutz Diesel Engine

4.1l 4-stroke Deutz Diesel Engine, stage 5 with 115kW / 156hp, max. torque of 610Nm

Electric drive train

Electric drive train with a speed range from 0-13.5 km/h

Electric driven PTO

Optional electric driven PTO (up to 100kW) +/- 1200rpm completely variable in adjustment

Diesel tank

350l diesel tank, 30l AdBlue tank

HighVoltage connectors

Optional HighVoltage connectors (up to 100kW and 700V)



Hydraulics

Hydraulic pump

85l/min at 210bar hydraulic pump

Spool valves

Up to 4 double-acting proportional spool valves

Rear linkage

Three-point rear linkage cat 3
8t maximum lift capacity at hooks

Front linkage

Three-point front linkage cat 2 (hooks cat 3)
3t maximum lift capacity at hooks

Load sensing

Optional Load Sensing

Safety measures

- ✓ **Geofence** system
- ✓ **Visual indicator** lights
- ✓ **Audible warning** alarm
- ✓ **Emergency stop buttons** around the machine

Obstacle detection system

- ✓ **LIDAR sensor** on the top of the machine
- ✓ **Ultrasonic sensors** integrated into the safety bumper
- ✓ **Radar sensors** integrated into the safety bumper
- ✓ **Contact sensitive bumper** integrated into the safety bumper

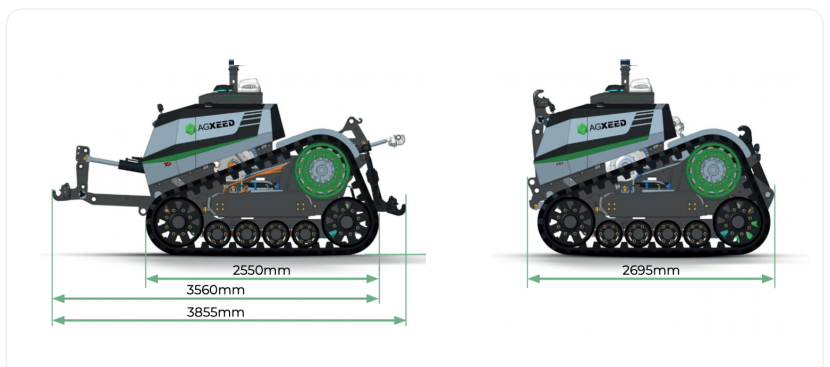
Machine dimensions

Minimal length: 2695mm

Height: 2000mm

Total length with hitch at 90 degrees:
3855mm

Empty weight: 7.8t



Track configuration



Variable track center adjustment between 1900 – 3000mm or 2250 – 3000mm
(range depending on the type of chassis and size of tracks, further options may apply)

Track type from 300mm – 910mm

Crop clearance 42cm

				
TRACK TYPE 300mm	TRACK TYPE 400mm	TRACK TYPE 610mm	TRACK TYPE 760mm	TRACK TYPE 910mm
TRACK CENTER 1900 – 3000mm	TRACK CENTER 1900 – 3000mm	TRACK CENTER 2250 – 3000mm	TRACK CENTER 2250 – 3000mm	TRACK CENTER 2350 – 3000mm
TRANSPORT WIDTH 3000 – 3500mm	TRANSPORT WIDTH 3000 – 3500mm	TRANSPORT WIDTH 3000 – 3610mm	TRANSPORT WIDTH 3000 – 3800mm	TRANSPORT WIDTH 3300 – 3900mm

Communication and positioning

Communications module for **bidirectional data transfer and RTK correction**

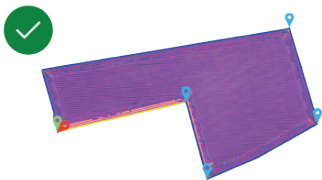
RTK GNSS for precise guidance and safe positioning: **+/- 2.5cm**



AGXCLOUD

Manage your farm through our application

Plan



- ✓ End-to-end, multi brand full season planning
- ✓ Planning provides the relevant level of detail
- ✓ Predictable and reliable planning, full transparency of the resources' usage milestones

Execute



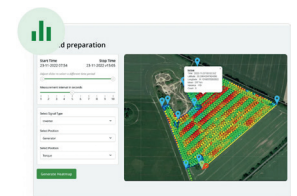
- ✓ Highest safety standards while unsupervised autonomous driving
- ✓ Adjust relevant settings in the field if necessary
- ✓ Flexibility, brand-agnostic in terms of implements

Control



- ✓ Full visibility of the running processes
- ✓ Choice of how much you get involved
- ✓ Access to all kinds of data in real time, interface for multiple roles

Optimise



- ✓ Data → actionable insights & Intuitive to use
- ✓ Truly open system
- ✓ Remote and predictable service possibilities

All specifications and dimensions undergo continuous development processes. Values and configurations may change over time.