



J.J.METCALFE & SON LTD

T 01609 771124

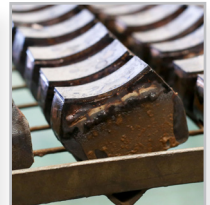
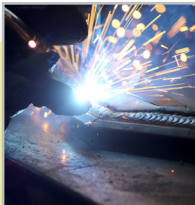
E info@jjmetcalfeandson.com

www.jjmetcalfeandson.com

DIRECT DRILL COULTERS



SPECIALISTS IN PERFORMANCE PARTS FOR AGRICULTURE





INDEX

| | |
|---|---------|
| > ABOUT DIRECT DRILL COULTERS | 3 - 4 |
| > ALL DIRECT DRILL OPTIONS | 5 - 8 |
| > TO FIT HORSCH | 9 - 12 |
| > TO FIT AMAZONE CAYENA | 13 - 16 |
| > TO FIT OTHER DRILL MAKES | 17 - 18 |
| > DIRECT DRILL SELF BUILD | 19 - 20 |
| > TO FIT SIMBA FREEFLOW | 21 |
| > PREPARING FOR DIRECT DRILLING With the NG System | 22 |



KEEP UP WITH US ON TWITTER @JJMANDSON



ABOUT J.J.METCALFE & SON LTD

With a wealth of 'in field' knowledge dating back to 1947, family run company J.J.Metcalfe & Son Ltd believe in achieving the best possible crop yield from the most economically viable solutions.

Specialising in the application of tungsten carbide, J.J.Metcalfe & Son Ltd focus on manufacturing wearing parts for agriculture that provide a consistently high performance throughout a long life using high grade steels, heat treatment methods and hard facing alongside tungsten carbide.

J.J.Metcalfe & Son's extensive knowledge on the manufacture of castings and the application of tungsten carbide, means that they now supply some of the industry's largest brand names.



> PLEASE NOTE

Throughout this brochure manufacturers names are used for reference only, all parts are designed and manufactured by J.J.Metcalfe & Son Ltd.



THE BENEFITS OF MOVING LESS SOIL

RUNS VERTICAL
WHEN IN THE
GROUND

THE FRONT TUNGSTEN
CARBIDE TIP OPTIMISES
THE ULTIMATE TINE ANGLE,
WHICH IS CRUCIAL FOR THE
BEST BALANCE BETWEEN
THROW AND SMEARING

ORGANIC MATTER
REMAINS ON THE
SURFACE



WORM POPULATION
LEFT UNDISTURBED
TO AERATE SOIL

SEEDS PLACED UNDER
ORGANIC MATTER



Image courtesy of Tom Greenhalgh, Mill Hill Farms, Retford

J.J.Metcalf & Son Ltd provide one of the lowest disturbance drill coulters on the market, moving only 12mm of soil in every row width, but what are the benefits of this?

- Using a narrow tine greatly improves seed placement and seed to soil contact. Moving less soil means there is less soil to replace, which makes filling the slot easier. Minimal disturbance also leaves a level seed bed which further promotes soil contact over the seeds, and in turn helps to prevent slug damage.
- Moving less soil means that very few weed seeds are disturbed, reducing the germination of bothersome varieties such as black grass and brome.
- The angle of the tip is crucial as it gives the least amount of throw and keeps smearing to a minimum, retaining moisture in the process.
- Low disturbance drilling goes hand in hand with conservation agriculture, which helps fix and increase carbon or organic matter in the soil and supports the worm population.
- Aside from the agronomic benefits, there are a wide range of advantages to the farmer. If you move less soil, you also use less labour, wearing parts and fuel.



ALL DIRECT DRILL OPTIONS



JJMDDHSPCO



JJMDDHAMCAY



JJMDDHAMCON



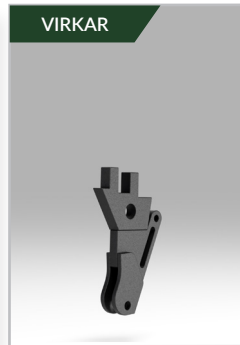
JJMDDHULTI



JJMDDHSHF/SHS



JJMDDHJOCK



JJMDDHVIRK

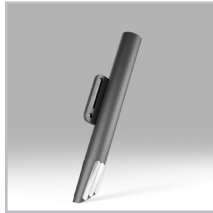


JJMDDHVERS

| PART ID | PRICE |
|---|--------|
| JJMDDHSPCO | £32.00 |
| JJMDDHAMCAY | £38.30 |
| JJMDDHAMCON | £40.68 |
| JJMDDHULTI | £38.34 |
| JJMDDHSHF / JJMDDHSHS | £32.00 |
| JJMDDHJOCK (requires SPCO coulter pages 9-12) | £99.34 |
| JJMDDHVIRK | £32.00 |
| JJMDDHVERS | £40.68 |



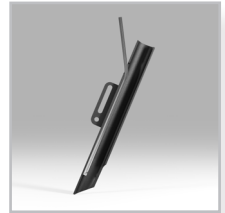
JJMDDT001



JJMDDT001HF



JJMDDT002



JJMDDT003



JJMDDT004



JJMDDT005



JJMDDT009



JJMDDT0011

MULTIPLE TUBE OPTIONS!

We have a variety of tubes available including granular and liquid fertiliser.

The liquid fertiliser tube can be internal, external or both depending on which tip you are using.

The bracket on the tube can be at either 125mm or 154mm - dependant on the point length.

| PART ID | PRICE |
|--|--------|
| JJMDDT001 Standard tube, Bracket: 125mm | £9.54 |
| JJMDDT001HF Standard Tube with Hard Facing: Bracket: 125mm | £15.00 |
| JJMDDT002 Granular fert, Bracket: 125mm/154mm | £22.50 |
| JJMDDT003 Int. Liquid fert, Bracket: 125mm/154mm | £18.08 |
| JJMDDT004 Ext. Liquid fert, Bracket: 125mm/154mm | £18.08 |
| JJMDDT005 Standard tube, Bracket: 154mm | £9.54 |
| JJMDDT009 Int. & Ext. Liquid fert, Bracket: 125mm/154mm | £25.43 |
| JJMDDT011 Curved Standard Tube, Bracket: 125mm | £10.00 |



ALL DIRECT DRILL OPTIONS



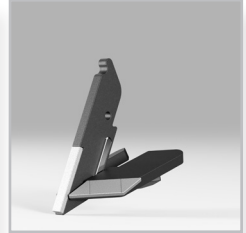
JJMDDP001



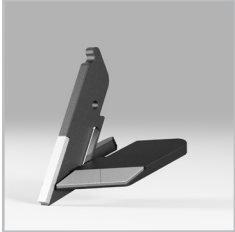
JJMDDP001-50W



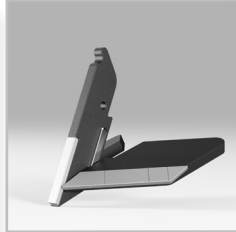
JJMDDP001-75W



JJMDDP001-100W



JJMDDP001-125W



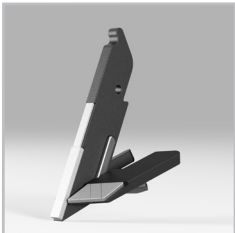
JJMDDP001-175W



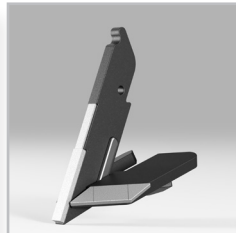
JJMDDP002



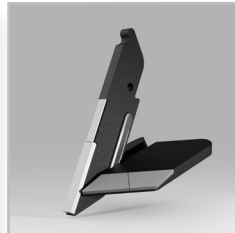
JJMDDP002-50W



JJMDDP002-75W



JJMDDP002-100W



JJMDDP002-125W



JJMDDP002-175W



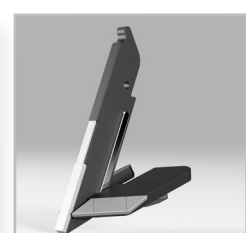
JJMDDP003



JJMDDP003-50W



JJMDDP003-75W



JJMDDP003-100W

.....

EASILY SWITCH BETWEEN TIPS JUST BY CHANGING A SINGLE ROLL PIN!

Tips available in three different lengths: 175mm, 200mm and 225mm.

200mm and 225mm now come with two tungsten tiles on the leading edge.

Winged points available in 50mm, 75mm, 100mm, 125mm and 175mm on any length point.

.....

| PART ID | PRICE |
|--|---------|
| JJMDDP001 12mm tungsten carbide tip (175mm) | £44.02 |
| JJMDDP001-50W 50mm tungsten carbide winged tip (175mm) | £63.01 |
| JJMDDP001-75W 75mm tungsten carbide winged tip (175mm) | £67.27 |
| JJMDDP001-100W 100mm tungsten carbide winged tip (175mm) | £76.53 |
| JJMDDP001-125W 100mm tungsten winged carbide tip (175mm) | £88.84 |
| JJMDDP001-175W 175mm tungsten winged carbide tip (175mm) | £97.41 |
| JJMDDP002 12mm tungsten carbide tip (200mm) | £55.13 |
| JJMDDP002-50W 50mm tungsten carbide winged tip (200mm) | £74.12 |
| JJMDDP002-75W 75mm tungsten carbide winged tip (200mm) | £78.38 |
| JJMDDP002-100W 100mm tungsten carbide winged tip (200mm) | £80.57 |
| JJMDDP002-125W 125mm tungsten carbide winged tip (200mm) | £93.19 |
| JJMDDP002-175W 175mm tungsten carbide winged tip (200mm) | £108.50 |
| JJMDDP003 12mm tungsten carbide tip (225mm) | £56.10 |
| JJMDDP003-50W 50mm tungsten carbide winged tip (225mm) | £75.09 |
| JJMDDP003-75W 75mm tungsten carbide winged tip (225mm) | £79.48 |
| JJMDDP003-100W 100mm tungsten carbide winged tip (225mm) | £81.32 |
| JJMDDP003-125W 125mm tungsten carbide winged tip (225mm) | £93.94 |
| JJMDDP003-175W 175mm tungsten carbide winged tip (225mm) | £109.25 |



TO FIT HORSCH CO AND SPRINTER

CODE PREFIX: JJMDDCOMP-



SPCO-12S-T001



SPCO-12S-T002



SPCO-12S-T003



SPCO-12S-T009



SPCO-12M-T001



SPCO-12M-T002



SPCO-12M-T003



SPCO-12M-T009



SPCO-12L-T005



SPCO-12L-T006



SPCO-12L-T007



SPCO-12L-T010

Drilled with 12mm horsch conversion coulters by Richard Raper, Thirsk.



| PART ID | PRICE |
|-------------------------|---------|
| JJMDDCOMP-SPCO-12S-T001 | £85.56 |
| JJMDDCOMP-SPCO-12S-T002 | £98.52 |
| JJMDDCOMP-SPCO-12S-T003 | £94.10 |
| JJMDDCOMP-SPCO-12S-T009 | £101.45 |
| JJMDDCOMP-SPCO-12M-T001 | £96.67 |
| JJMDDCOMP-SPCO-12M-T002 | £109.63 |
| JJMDDCOMP-SPCO-12M-T003 | £105.21 |
| JJMDDCOMP-SPCO-12M-T009 | £112.56 |
| JJMDDCOMP-SPCO-12L-T005 | £97.64 |
| JJMDDCOMP-SPCO-12L-T006 | £110.60 |
| JJMDDCOMP-SPCO-12L-T007 | £106.18 |
| JJMDDCOMP-SPCO-12L-T010 | £113.53 |



TO FIT HORSCH CO AND SPRINTER

CODE PREFIX: JJMDDCOMP-



SPCO-100S-T001



SPCO-100S-T002



SPCO-100S-T004



SPCO-100S-T009



SPCO-100M-T001



SPCO-100M-T002



SPCO-100M-T004



SPCO-100M-T009



SPCO-100L-T005



SPCO-100L-T006



SPCO-100L-T008



SPCO-100L-T010

Drilled with 100mm horsch conversion coulters, image courtesy of Aaron Hogsbjerg.



| PART ID | PRICE |
|--------------------------|---------|
| JJMDDCOMP-SPCO-100S-T001 | £118.07 |
| JJMDDCOMP-SPCO-100S-T002 | £131.03 |
| JJMDDCOMP-SPCO-100S-T004 | £126.61 |
| JJMDDCOMP-SPCO-100S-T009 | £130.65 |
| JJMDDCOMP-SPCO-100M-T001 | £122.11 |
| JJMDDCOMP-SPCO-100M-T002 | £135.07 |
| JJMDDCOMP-SPCO-100M-T004 | £130.65 |
| JJMDDCOMP-SPCO-100M-T009 | £138.00 |
| JJMDDCOMP-SPCO-100L-T005 | £122.86 |
| JJMDDCOMP-SPCO-100L-T006 | £135.82 |
| JJMDDCOMP-SPCO-100L-T008 | £131.40 |
| JJMDDCOMP-SPCO-100L-T010 | £138.75 |



TO FIT AMAZONE CAYENA OR BRACKET

CODE PREFIX: JJMDDCOMP-



AMCAY-12S-T001



AMCAY-12S-T002



AMCAY-12S-T003



AMCAY-12S-T009



AMCAY-12M-T001



AMCAY-12M-T002



AMCAY-12M-T003



AMCAY-12M-T009



AMCAY-12L-T005



AMCAY-12L-T006



AMCAY-12L-T007



AMCAY-12L-T010

Drilled into stubble with 12mm horsch conversion coulters by Richard Raper, Thirsk.



| PART ID | PRICE |
|--------------------------|---------|
| JJMDDCOMP-AMCAY-12S-T001 | £91.86 |
| JJMDDCOMP-AMCAY-12S-T002 | £104.82 |
| JJMDDCOMP-AMCAY-12S-T003 | £100.40 |
| JJMDDCOMP-AMCAY-12S-T009 | £107.75 |
| JJMDDCOMP-AMCAY-12M-T001 | £102.97 |
| JJMDDCOMP-AMCAY-12M-T002 | £115.93 |
| JJMDDCOMP-AMCAY-12M-T003 | £111.51 |
| JJMDDCOMP-AMCAY-12M-T009 | £118.86 |
| JJMDDCOMP-AMCAY-12L-T005 | £103.94 |
| JJMDDCOMP-AMCAY-12L-T006 | £116.90 |
| JJMDDCOMP-AMCAY-12L-T007 | £112.48 |
| JJMDDCOMP-AMCAY-12L-T010 | £119.83 |



TO FIT AMAZONE CAYENA OR BRACKET

CODE PREFIX: JJMDDCOMP-



AMCAY-100S-T001



AMCAY-100S-T002



AMCAY-100S-T004



AMCAY-100S-T009



AMCAY-100M-T001



AMCAY-100M-T002



AMCAY-100M-T004



AMCAY-100M-T009



AMCAY-100L-T005



AMCAY-100L-T006



AMCAY-100L-T008



AMCAY-100L-T010

Stubble after using 100mm coulters, image courtesy of Tom Reynolds, Salbstein Farms.



| PART ID | PRICE |
|---------------------------|---------|
| JJMDDCOMP-AMCAY-100S-T001 | £124.37 |
| JJMDDCOMP-AMCAY-100S-T002 | £137.33 |
| JJMDDCOMP-AMCAY-100S-T004 | £132.91 |
| JJMDDCOMP-AMCAY-100S-T009 | £136.95 |
| JJMDDCOMP-AMCAY-100M-T001 | £128.41 |
| JJMDDCOMP-AMCAY-100M-T002 | £141.37 |
| JJMDDCOMP-AMCAY-100M-T004 | £136.95 |
| JJMDDCOMP-AMCAY-100M-T009 | £144.30 |
| JJMDDCOMP-AMCAY-100L-T005 | £129.16 |
| JJMDDCOMP-AMCAY-100L-T006 | £142.12 |
| JJMDDCOMP-AMCAY-100L-T008 | £137.70 |
| JJMDDCOMP-AMCAY-100L-T010 | £145.05 |



TO FIT OTHER DRILL MAKES

CODE PREFIX: JJMDDCOMP-



AMCON-12S-T0011



AMCON-12S-T0012



AMCON-100S-T0011



AMCON-50S-T0011



JOCK-12S-T0011



JOCK-100S-T001



VERSA-12S-T001



VERSA-100S-T001



SHF-12S-T001



SHS-100S-T001



ULTI-12S-T001



VIRK-12S-T001

Wheat sown after peas using 50mm winged coulter, image courtesy of Roman Magg, Latvia



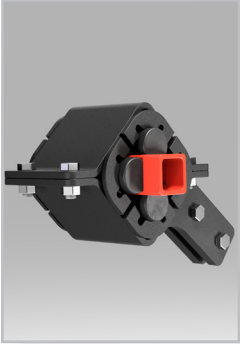
KEEP UP WITH US ON TWITTER @JJMANDSON

| PART ID | PRICE |
|----------------------------|---------|
| JJMDDCOMP-AMCON-12S-T0011 | £95.87 |
| JJMDDCOMP-AMCON-12S-T0012 | £108.83 |
| JJMDDCOMP-AMCON-100S-T0011 | £128.38 |
| JJMDDCOMP-AMCON-50S-T0011 | £114.86 |
| JJMDDCOMP-JOCK-12S-T0011 | £185.36 |
| JJMDDCOMP-JOCK-100S-T0011 | £218.33 |
| JJMDDCOMP-VERSA-12S-T001 | £95.41 |
| JJMDDCOMP-VERSA-100S-T001 | £126.75 |
| JJMDDCOMP-SHF-12S-T001 | £85.56 |
| JJMDDCOMP-SHS-100S-T001 | £118.07 |
| JJMDDCOMP-ULTI-12S-T001 | £91.90 |
| JJMDDCOMP-VIRK-12S-T001 | £85.56 |

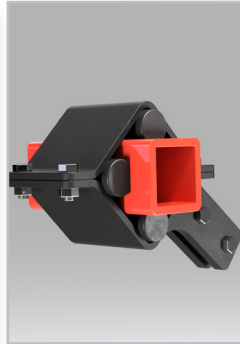


DIRECT DRILL SELF BUILD

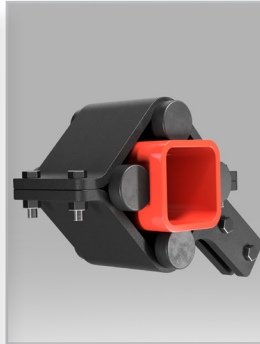
With many people self building drills or repurposing an old drill, we offer a range of different parts to help you achieve this goal. We can fit our coulters onto varying size of box section, in either a square or diamond configuration.



JJMDDTOPB050



JJMDDTOPB002



JJMDDTOPB100



JJMDDTOPB050D with
AMCAY-100S-T001



JJMAD-100-360



JJMFD-100-360

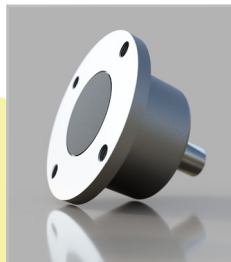


JJMAD-100-360/5



JJMFD-80-360

We also offer spare parts for the disc system.



Horsch Drill Conversion, picture courtesy of Kiwi Agronomy



| PART ID | PRICE |
|--|---------|
| JJMDDTOPB050 | £95.87 |
| JJMDDTOPB002 | £87.06 |
| JJMDDTOPB100 | £100.13 |
| JJMDDTOPB050D | £99.55 |
| JJMAD-100-360 | £299.00 |
| JJMFD-100-360 | £274.76 |
| JJMAD-100-360/5 | £290.78 |
| JJMFD-80-360 | £205.11 |
| JJMFD-BEARINGHUB | £41.00 |
| JJMDDBSAU001 (price each - 40mm x 152mm) | £6.32 |
| JJMDDBSAU002 (price each - 50mm x 152mm) | £9.88 |
| JJMFD-360SCALDISC | £33.36 |



TO CONVERT SIMBA



HF
TC



FULL FREEFLOW CONVERSION COULTER

The 'Metflow' coulters allows Simba Freeflow and Mini-flow machines to direct drill by fitting to the bottom of the spring tine.

The cost for a complete unit is £82.64.



KEEP UP WITH US ON TWITTER @JJMANDSON



Spring beans drilled with horsch conversion coulters by Richard Raper, Thirsk.

PREPARING FOR DIRECT DRILLING

THE NG CULTIVATION SYSTEM

It is easy to understand why many farmers and growers are choosing to switch to direct drilling. However, the transition can be daunting and not always easy, yield can suffer in the first few years if the land is not ready.

Eventually, crop rotation and a healthy worm population will take the place of tillage, but initially the NG System from J.J.Metcalf & Son Ltd can improve soil structure to prepare for direct drilling.

In order for direct drilling to be a success the soil must be free of compaction, have a healthy worm population and plenty of organic matter.

Direct drilling requires the seed to be placed directly beneath the residues of the previous crop with minimal soil disruption. Worms help aerate the soil and reduce compaction therefore must not be disturbed.

The low disturbance nature of the NG System is the perfect transitional subsoiler point. The NG System has the ability to relieve compaction without mixing soil zones, it creates fissures through the soil allowing air flow, water

and nutrients to penetrate. The narrow shin retains the summer tilth providing good seed to soil contact which is essential for germination, and keeps the disruption of worms as low as possible.

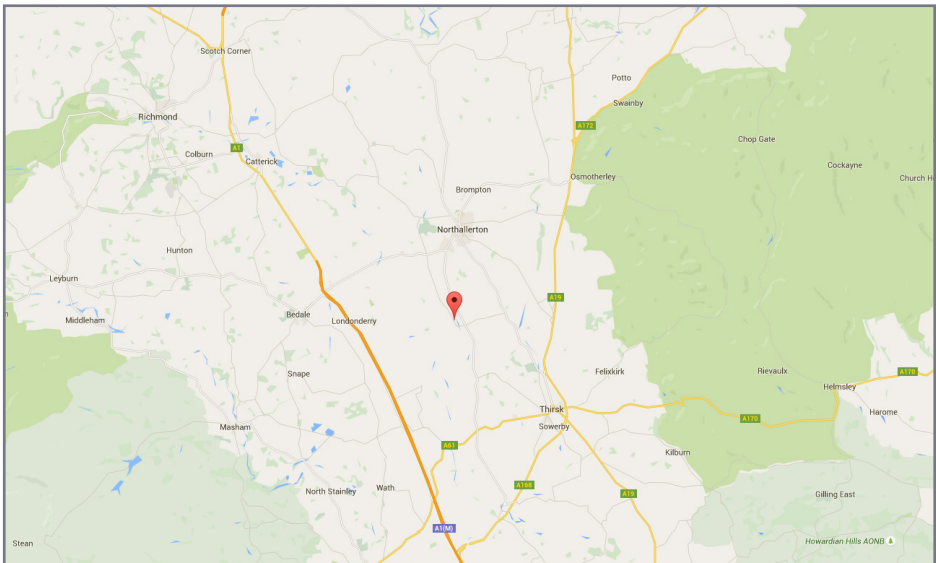




J.J.METCALFE & SON LTD

T 01609 771124 | E info@jjmetcalfeandson.com

WHERE TO FIND US



NEXT DAY SERVICE ON ALL IN STOCK PARTS
WWW.JJMETCALFEANDSON.COM

J.J. Metcalfe & Son Ltd
Willow Garth Farm, Newby Wiske,
Northallerton, North Yorkshire, DL7 9ET